

CENTRAL AND  
WEST WIGHT

Pick up your FREE copy

# Beacon

August 2022

HISTORY

POSTCARD  
MUSEUM

ISLAND STORY

ISLAND HAS  
TALENT

WALK

ALONG THE  
RIVER YAR

RECIPE

SEARED TUNA

## ISLAND VIBES

### Fuss-Free 30 Day Contracts

Pay what you see, leave  
at any time\*

\*Fibred areas only.  
Visit [www.wightfibre.com/fussfree](http://www.wightfibre.com/fussfree) for more information



- Unbeatable Value
- Unbeatable Price
- Speed Guarantee
- WiFi Guarantee



**wightfibre**  
*because we care*

Order online at [wightfibre.com](http://wightfibre.com)  
or call 01983 240240

A Different Kind of Broadband Full-fibre • Ultrafast • Future-proof



# Summer INSPIRATIONS

Delivering affordable luxury and  
over 40 years experience



[www.joedan.co.uk](http://www.joedan.co.uk)

Visit your local Design Centre.

Open Mon - Fri 9am - 5pm • Saturday by appointment only.

5 Daish Way • Isle of Wight • PO30 5XB

t: 01983 632106

BOURNEMOUTH | ISLE OF WIGHT | ORPINGTON | TEWKESBURY | WINCHESTER

lusso  
ALUMINIUM



**JOEDAN**  
WINDOWS & DOORS





## Welcome from the EDITOR

We hope you're having a lovely summer so far. What a scorcher it's been!

I have been lucky enough to enjoy a few beach days already — and when I'm there, I feel like I could be anywhere in the world. The Isle of Wight is breath-taking at this time of year.

If you haven't had a chance to watch any of the Island Has Talent heats down on Ryde Beach, then there's still time. Head to page 16 to find out more.

If you fancy a stroll, why not try this month's walk along The River Yar. Or if need a little shade, you could head inside the Royal Victoria Arcade and explore the little gem that is the Saucy Seaside Postcard Museum. More details on page 11.

If you're staying home to avoid the heat, we've brought you tips on how to bring your garden back to life after a scorching summer — as well as a tasty tuna recipe for all you seafood lovers.

Enjoy the rest of your summer.

*Amy Shephard*

Editor amy.shephard@iwbeacon.com

Photograph by Robin Crossley



- 5** Recipe: Seared Tuna
- 6-7** The Entertainment Guide
- 9** Walking the Island: Along The River Yar
- 11** Recipe: Eton Mess Tray Bake
- 15** History: Saucy Seaside Postcards
- 16-17** The Island Has Talent
- 18-21** News from Your Area
- 29** Gardening: Revive Your Garden After Summer
- 31** Spot the Difference Competition



# Beacon

MAGAZINE

IW Beacon Media Centre, 8-10 Dodnor Park, Newport, PO30 5XE

**CALL US**  
01983 433112

**FACEBOOK**  
iwbeacon

**TWITTER**  
@iwbeaconmag

**VISIT US**  
iwbeacon.com

**INSTAGRAM**  
@beaconiow

**EMAIL**  
hello@iwbeacon.com

**totalsensemedia**



**INTRODUCTION  
OFFER**

**10%**

**OFF BANNERS**

QUOTE RAVEN10



**WIDE FORMAT**

**BANNERS**

**POSTERS**

**CANVAS PRINTS**

**DIGITAL WALLPAPER**

**VINYL STICKERS**



**DIGITAL PRINTING**

**LEAFLETS**

**BUSINESS CARDS**

**NCR**


**BOOKLETS**

**STATIONERY**

[www.ravenprint.co.uk](http://www.ravenprint.co.uk)

[studio@ravenprint.co.uk](mailto:studio@ravenprint.co.uk)

**01983 529044**



**F.ROBERT FRISE  
JEWELLERS**

ESD.1952

Gifts & Fancy Goods for all occasions

Modestly priced Gold & Silver Jewellery

Silver Plate, Photo Frames, Pens, Trinket Boxes

Watches (Limit, Lorus, Sekonda & Timex)

Clocks (Antique & Modern) - Barometers - Sports Trophies

*Engraving Service*

(Metal & Glass - subject to suitability)

Free Engraving on items purchased on site (except glass)

*Repair Service*

Clock, Watch & Jewellery Repairs

Watch Batteries/Straps/Bracelets Supplied & Fitted

Watch Bracelet Alterations - Car Key Fob Batteries

KIMBERLEY HOUSE, HIGH STREET, FRESHWATER, IOW, PO40 9JX

TEL: 752418 FROBERTFRISE@AOL.COM

FROBERTFRISEJEWELLERS.COM - WIGHTTIME.COM

*You'll find us up the hill in the one-way High Street*

*Open 9am-4.30pm Mon-Fri*





[botanic.co.uk/whats-on](https://botanic.co.uk/whats-on)

Live music  
Great food  
Garden bar  
Family Friendly  
Explore the Garden

Join us for our Tavern  
Nights at Ventnor  
Botanic Garden, every  
Friday & Saturday  
evening.

18:30 - 20:30



wildheart  
animal isle of wight  
sanctuary

Together we roar,  
together we can  
make a difference!

**Twilight Safaris**  
Every Wednesday throughout  
August, starting on  
Wednesday 27th July.

**Early Bird Breakfasts**  
Every Weds - Sunday  
throughout August  
including 4th September

**Roaring 40s**  
10th and 11th of September

To book your place go to  
[wildheartanimalsanctuary.org](https://wildheartanimalsanctuary.org)  
Visit us: Yaverland Rd  
Yaverland, Sandown, PO36 8QB

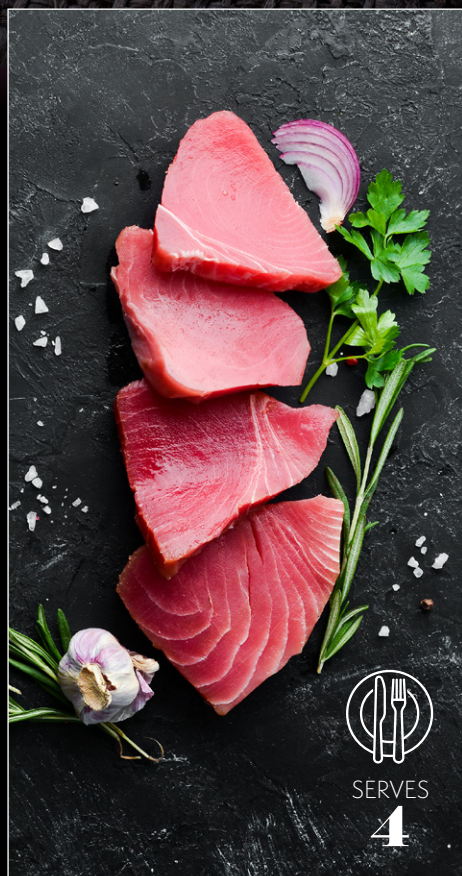






# Seared Tuna

On a bed of spicy red onions, with a chilli ponzu sauce and fried garlic



SERVES  
**4**

## INGREDIENTS

### For the tuna

800g tuna loin  
500ml ponzu sauce  
100g chilli daikon  
80g spring onions – thinly sliced  
20g deep fried garlic

### For the chilli braised red onions

5 red onions  
100ml soy sauce  
100ml rice vinegar  
100ml sake  
60g caster sugar  
12g ginger – finely chopped  
2 garlic cloves – thinly chopped  
1½ dried red chillies – large (seeds removed)

## METHOD

**1** Cut the tuna into blocks, season and sear in a very hot pan with a little oil until coloured. The tuna should be raw apart from the outside 2-3mm. Place on a lined tray and refrigerate.

For the onions, sweat off the finely chopped garlic, ginger and dried chillies for a few moments, then add the sliced red onions and cook till semi-transparent.

**2** Add the soy, sake, rice vinegar and sugar and bring to the boil, remove from the heat and strain, then allow to cool on trays. The onions should still be al dente, spicy and a little sweet.

**3** Thinly slice the spring onions. Fry off the sliced garlic till crisp and golden brown and grate the chilli daikon.

**4** Place a pile of the spicy onions in the centre of a salad bowl, cut the tuna into slices and roll up, then place six rolled-up slices of tuna on the onions in a pyramid shape.

Add a little chilli daikon to some of the ponzu sauce and pour over the tuna, garnish with the fried garlic and sliced spring onions. Finally, finish with a small pile of extra chilli daikon. **B**



# The Entertainment GUIDE

Visit [iwbeacon.com](http://iwbeacon.com) to see our full events guide

## JACK UP SUMMER PARTY



**SAT 13 & SUN 14 AUGUST**  
RETRO STAYCATIONS, RYDE

**BOUTIQUE MINI-FEST**

<b>Tom Jones</b> <small>A tribute by Simon Howard</small>	<b>GEORGE MICHAEL</b> <small>Rob Lamberti George Michael Relived</small>	<b>SIMPLY RED</b> <small>A tribute by Red Mick</small>	<b>Meat Loaf</b> <small>Real Dead Ringer The Meat Loaf Show</small>
<b>SKA'D FOR LIFE</b>	<b>JERSEY BOYS</b> <small>A tribute by Jersey Guys</small>	<b>Go West</b> <b>SPANDAUR BALLETT</b> <small>A tribute by Go Span Duran</small>	<b>MADONNA</b> <small>A tribute by MDNA</small>

**Crowdeoke**

This year's summer offering will be a family-friendly celebration of popular music from the 60s, 70s, 80s and 90s featuring a variety of internationally renowned tribute acts and original bands to help bring back the good times. Rob Lamberti will be reliving the musical talent of George Michael in a not-to-be-missed performance. The weekend will also feature tributes to the legendary Tom Jones, Simply Red, Go West, Spandau Ballet, Duran Duran, Madonna, Jersey Boys (Frankie Valli and The Four Seasons) as well as Real Dead Ringer – The Meat Loaf Show.

**13TH & 14TH  
AUGUST  
RETRO  
STAYCATIONS,  
RYDE**

Ska'd For Life will be performing a special extended set and there will be a two-part show from Crowdeoke; a huge sing-along extravaganza. There'll be a range of local traders and festival stalls with locally sourced, freshly prepared food including BBQ direct from Hazelgrove Farm where this year's mini-fest is taking place.

**13th & 14th August  
Retro Staycations, Ryde**  
**Tickets £52.50 weekend / £30 day.**  
**Teens (13-17) half price. Kids go free. All tickets include posh loos!**  
[jackupevents.co.uk](http://jackupevents.co.uk)



## THE AWAKENING FESTIVAL OF WELLBEING



Don your own oxygen mask and embrace a weekend just for you. You can choose from over 50 sessions over the weekend.

**24TH & 25TH SEPT  
NORTHWOOD  
HOUSE,  
COWES**

On Saturday explore inspiring workshops & talks, yoga & movement, meditation & mindfulness, holistic therapies, a wellbeing marketplace and the Feel Good Glitter Party in the evening. On Sunday enjoy the slower pace of life with restorative yoga, breath and sound healing sessions. Join for the Saturday, or for the full weekend — the choice is yours. [www.awakeningfestival.co.uk](http://www.awakeningfestival.co.uk)

## ISLE OF WIGHT MODEL ENGINEERING SOCIETY

Ever considered Model Engineering as a hobby? Well, now's your chance to find out what it's all about!

The only Model Engineering Society on the Isle of Wight, invites you to a special event at the society's home in Cowes.

You're welcome to go along and chat to members, and find out what they do. Perhaps you've a certain skill that you can offer to help with? Maintenance days are held every Wednesday. There's always lots to do! From painting to gardening, from welding to machining, there's something for every one.

Always wanted to drive a miniature train? Now's your chance!

Perhaps your interest lies more with Model Boats or Garden Railways? Why not have a chat with one of the Boating

or Garden Rail members. The society is fortunate enough to have a sizable model boat

pond and two garden rail circuits! All need constant maintenance, can you help?

**Open Weekend 3rd & 4th September**

- Exhibition stands - workshop tours
- Boating & garden railway demonstrations!

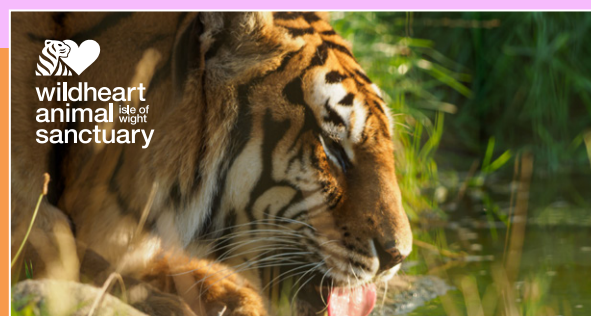
- **FREE train rides!!!**

Entry is free, but donations gratefully accepted. (Cash only) Teas, coffee, cakes & ice cream available at extremely reasonable prices!

**Location: Behind Northwood Cricket Club, Northwood Recreation Ground, Park Road, Cowes. PO31 7NN. Email [honsec@iwmes.org.uk](mailto:honsec@iwmes.org.uk)**



**SPECIAL OPEN  
WEEKEND  
SAT 3RD & SUN 4TH  
SEPTEMBER.  
GATES OPEN  
1PM - 4PM**



**wildheart  
animal  
sanctuary**

## SUMMER AT THE WILDHEART ANIMAL SANCTUARY

**Twilight Safaris: Every Wednesday throughout August.**  
**Early Bird Breakfasts: Every Wednesday-Sunday throughout August including 4th September.**  
**Roaring 40s: 10th and 11th of September.**

**To book your place go to [wildheartanimalsanctuary.org](http://wildheartanimalsanctuary.org)**  
**Visit: Yaverland Rd, Yaverland, Sandown, PO36 8QB**

## MAGIC IN THE SKIES



Visit The Needles every Thursday between 4th August & 1st September for a host of family entertainment, live music, and iconic firework displays. Derek Sandy, Randini, Stevo & Kai, Groove Union and many others. Open from 10am until late.





# COWES WEEK

29th Jul - 7th Aug 2022



THE PLACE TO BE!

## NORTHWOOD HOUSE: ALWAYS THE PLACE TO BE IN COWES WEEK

Now more popular than ever with visitors, Northwood House will again be at the social centre of Cowes Week between 29th July and 7th August.

The venue's Lawn Bar, with its relaxed Mediterranean vibe and huge outdoor seating area is open daily from 12pm until late, offering a range of premium drinks and food. Artisan pizza specialists "So Much Dough" will be in situ all week and are joined by the Captains Grill who'll be serving up a premium burger menu for those in search of a tasty treat.

There will be live music from the Lawn Bar's Garden Stage every night between 8pm and 10.30pm...but get there early to find a table! And don't miss the Cowes Week 'Disco Alfresco' Parties between 10.30pm and 12.30am on the 3rd, 4th and 5th August...the best place to be if you want to disco the night away, hosted by popular local DJs! Admission fees apply at certain times and evenings, so check the venue website/social media for details.

You can also check out the new and

COWES WEEK LAWN BAR MUSIC		
<b>FRI 29th JUL</b>	<b>SAT 30th JUL</b>	<b>SUN 31st JUL</b>
Ruby & the Diamonds	The Wilde Flowers	Jimmy's Big Fish
<b>MON 1st AUG</b>	<b>TUE 2nd AUG</b>	<b>WED 3rd AUG</b>
The Bohemians	Special Brew	Level 7
<b>THU 4th AUG</b>	<b>FRI 5th AUG</b>	<b>SAT 6th AUG</b>
The Dance Preachers	Mr Mojo	DJ Omar & Friends: "Ibiza Anthems Party"
<b>COWES WEEK DISCO ALFRESCO</b> <b>WED 3rd, THU 4th &amp; FRI 5th AUG</b> <b>From the Mahou Garden Stage 10.30pm-12.30am</b> Weds: Our Girl G • Thurs: DJ Omar • Fri: DJ Jakey Chan Playing classic disco and house, crowd-pleasing dance, 80's and 90's belters		

exclusive Mermaid Garden, a premium all-weather bar area with beautiful yurts brought to you in conjunction with Mermaid Isle of Wight Gin.

Visitors can enjoy a quintessential afternoon tea at the Northwood House Tea Garden, another popular retreat during the week. It's open daily from 11am to 5pm, serving home-made

cakes, cream teas, sandwiches, drinks and ice cream...a very relaxing experience indeed!

On 2nd & 3rd August there are several delightful outdoor theatre performances for families of "The Tales of Peter Rabbit" brought to you by London's Quantum Outdoor Theatre, with tickets available online and on the gate each day.

Official event grass parking is available daily from 8.30am during the week at Northwood Park, which is signposted off Ward Avenue.

For all the information head to [www.northwoodhouse.org/](http://www.northwoodhouse.org/) events

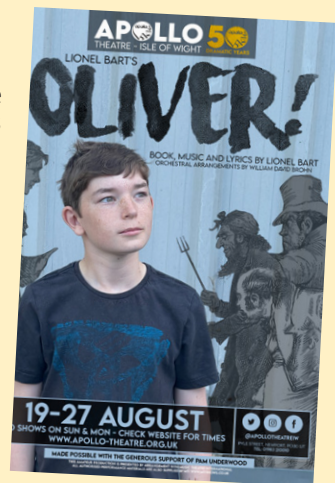
## SUMMER AT THE APOLLO



'Little Shop of Horrors' - Visiting company The Mitre Players return with their latest production from 2nd - 6th August. Tickets £14. 'Oliver' - Lionel Bart's iconic musical,

sponsored by Pam Underwood, from 19th - 27th August. Tickets £10. Students/unemployed £5

Book these unmissable shows through [www.apollo-theatre.org.uk](http://www.apollo-theatre.org.uk) or call 01983 210010 and leave a message.



30th Jul - 7th Aug  
11am-5pm

**NORTHWOOD HOUSE**

**Tea garden**

THE PERFECT TREAT FOR COWES WEEK!  
ENJOY THESE SPECIAL READER OFFERS:

**BUY 3 CREAM TEAS AND GET 1 FREE!**

MENU PRICE: £5.50 each  
(GREAT FOR GROUPS!)

VALID 29 JUL - 3 AUG 2022

**MR WHIPPY FAMILY SUPER SAVER!**

RRP £2.50 @

**GET 3 FOR £6.50 OR 5 FOR £10**

ALL WEATHER EVENT

**TAPNELL FARM PARK**

**THE ISLAND'S BIGGEST KIDS PARTY**

EVERY THURSDAY EVENING  
From 28th July

Book your tickets  
[tapnellfarm.com/events](http://tapnellfarm.com/events)

Every Thursday evening, from 6pm-9.30pm, join the Tapnell Farm Park team for The Island's Biggest Kids' Party! They're going BIG on fun and entertainment with the renowned Bubble Wizard and his Giant Bubble Show, classic kids party games and fun prizes, magic, a disco and party dances! Food and licensed bar. All-weather event.

Tickets must be booked online in advance:  
[www.tapnellfarm.com/events](http://www.tapnellfarm.com/events)



The Chale Show has a fantastic mix of entertainment and attractions. From motorbike stunt shows and dog agility relay displays in the main arena to live bands on the Sunflower Music Stage. You'll also find the Isle of Wight's largest Horticultural Marquee, with over 1,500

entries showcasing an astounding array of produce, craft, floral and culinary talent. Other show highlights



include:

- craft and antiques marquees
- farmers market
- shopping opportunities
- fairground rides
- kids zone
- meet and greet children character
- vintage and steam vehicles
- charity stalls and much more.

Adult and seniors - £11.  
Children under 16 - Free  
Tickets are available on the gate and are valid for one day.

6TH-7TH AUGUST  
10AM-5PM  
AT CHALE RECREATION GROUND





# 20% OFF EVERYTHING!

*You've supported us now let us support you!*



**Care In The Garden, The Plant Market,  
Palmers Brook Nursery, Ryde, PO33 4NS**  
[www.careinthegarden.com](http://www.careinthegarden.com)  
 Tel: 07722 868939

 Find us on facebook



## SOLENT FUELS

**Domestic and Commercial Heating Oil, Agricultural and Marine Diesel supplied from our Newport fuel depot.**

**On the Island, for the Island.**

**Call 01983 654321 to speak with our dedicated team to order your Fuel or Heating Oil.**

[Solentfuels.co.uk](http://Solentfuels.co.uk)



Scan here to go directly to our website



# Enjoy The Sun

## SAFELY THIS SUMMER

An Isle of Wight campaign, set up in memory of a young mum who died of skin cancer, is urging people to be safe in the sun this summer.

**Z**oe's Law uses its Facebook page to encourage followers to protect their skin with a good quality sun screen as temperatures continue to soar over the summer.

They also highlight the importance of taking just five minutes to check your moles, using the ABCDE guidance.

A – Asymmetric. B- Border.  
C- Colour. D- Diameter.  
E- Evolving.

Zoe's Law was founded in 2020 after 26-year-old Zoe Panayi died, despite seeking help for an 'itchy' mole on numerous occasions. Following Zoe's death, her friends and family launched Zoe's Law — a petition to ensure all moles and skin tags removed, are tested.

The petition has so far been signed by more than 32,000 people and Isle of Wight MP Bob Seely has previously said



he plans to escalate it to Parliament. You can sign the petition via a link on our website ([iwbeacon.com](http://iwbeacon.com)).

An investigation was subsequently launched following Zoe's death.

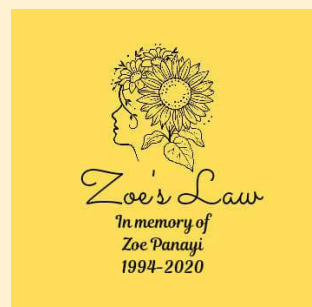
The CCG would not comment on the outcome of the investigation when approached. However, it did say it has since put in place new measures.

As part of changes, GP locations on the Isle of Wight now have access to new dermatology testing technology.

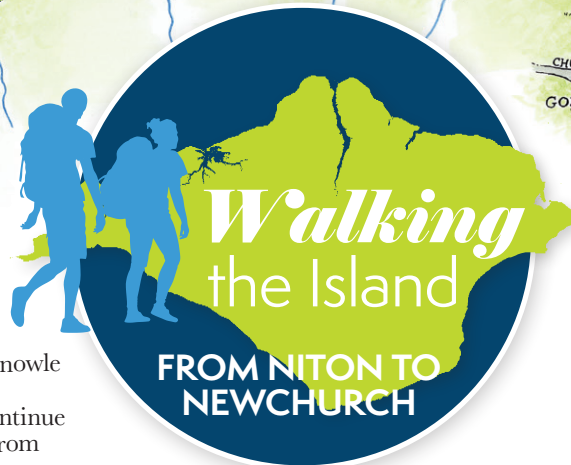
The system allow GPs to use mobile Teledermoscopy to send images of moles to other health professionals across the country.

Through the platform, doctors are said to be able to diagnose and recommend treatment quicker.

Zoe's brother, Charlie, will be facing his fears and taking on a Wing Walk next month, to raised funds to allow Zoe's Law to purchase a skin scanner. Any additional sponsorship will be donated to Mountbatten. To sponsor Charlie, head to [www.justgiving.com/crowdfunding/charalambous-panayi](http://www.justgiving.com/crowdfunding/charalambous-panayi)







**S**tart on the Blackgang Road near Niton Manor Farm. Walk along the road to cross Niton High Street.

Take the path opposite and follow the trail way-markers out of the village to Allotment Road and Ashknowle Lane into Whitwell.

Cross road and take lane opposite past an old pump. Continue past the remains of a stone sheep wash and at the exit gate from the field take the path on the left back towards the village.

At the High Street turn right and then turn left into Bannock Road. Then turn right into Slay Lane, follow the lane to Stockbridge House. Continue along track curving right and at road turn right.

Turn left off the road alongside a garden on Footpath NT91 towards Ford Farm. At the track junction, turn left across the river then immediately turn right. Pass a water treatment works on left, then turn right and cross bridge over the river. Follow footpath way-markers through fields to road at Roud and turn left.

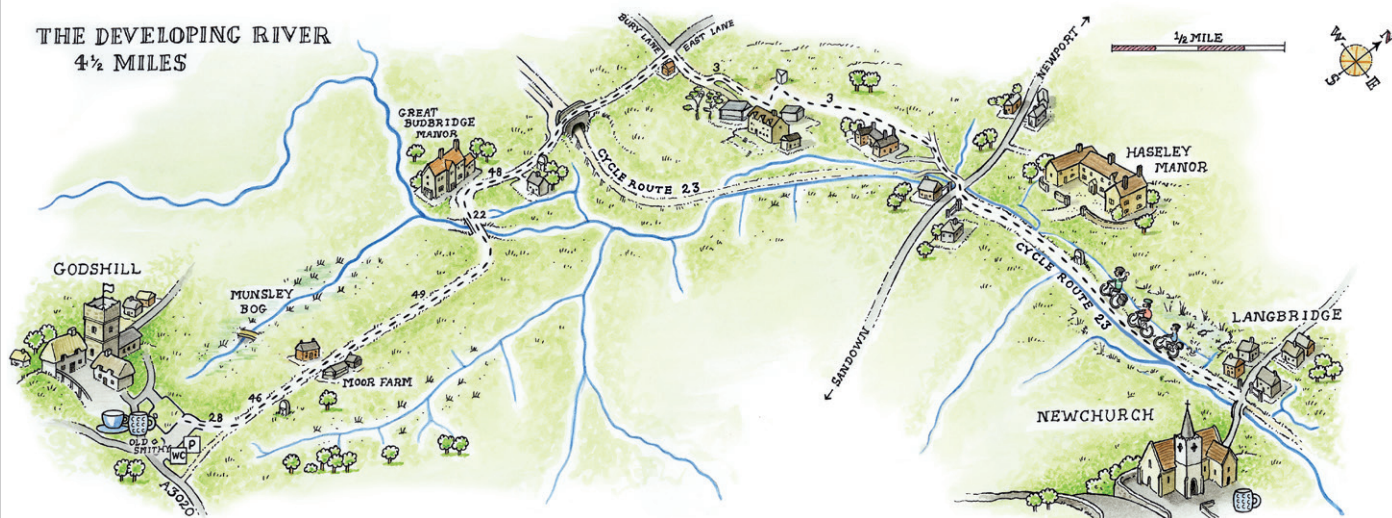
Take the footpath opposite from the car park, this leads across the field and at the track, turn left. Follow this track through Moor Farm, to cross the river and past Great Budbridge Manor to the minor road.

Follow this minor road over a cycle track to a four way junction and turn right. Now follow the footpath markers to the main road with the traffic lights for the Cycleway at Horringsford. Cross road and turn left on to the Newport to Sandown Cycle Track. You'll pass Pedallers Cafe where you could stop for refreshments.

Continue to the edge of this section at Langbridge, where you can turn right steeply uphill to the Public House at Newchurch ③



## THE DEVELOPING RIVER 4½ MILES



Distance: 9.5 miles Walk Time: 3-4 hours

Courtesy of

**ISLAND RIVERS**  
All about rivers on the Isle of Wight

[www.islandrivers.org.uk](http://www.islandrivers.org.uk)



MEDITERRANEAN CUISINE



**Now Open**

**GG's**  
BAR & RESTAURANT

**A Family-Friendly Dining Destination**

GG's offer a varied menu, which blends traditional English and mediterranean cuisine. We are a family-friendly restaurant that welcomes little ones with a huge smile.

GG's provides a varied menu of freshly prepared dishes with the finest ingredients that will tempt all palates. We offer a fantastic choice of pizzas baked in our huge authentic pizza oven.



Staplers Rd, Newport, Isle of Wight PO30 2NB  
Mon - Fri: 11am - 9pm / Sat - Sun: 11am - 10pm  
E: [info@ggsiow.com](mailto:info@ggsiow.com) T: 01983 219999 [www.ggsiow.com](http://www.ggsiow.com)

# Bakes & Beers!

Freshly baked handmade cakes go perfectly with a cold bottle of Goddards Real Ale. Gift Boxes start from just £9.20.



Chat With Us: 01983 566868 Shop Online: [www.gracesbakery.uk](http://www.gracesbakery.uk)

THE ISLAND'S FAVOURITE...

# isle of wight radio

W

H

A

T'

S

#

T

H

E

\*

W

O

R

D

?

Work out the 'Wright' word and you could win BIG. Text 60777 to play!



SCAN the QR code for a list of the wrong answers

Sponsored by

**wright**  
estate agency  
[wright-iw.co.uk](http://wright-iw.co.uk)

**SOLD**  
subject to contract

THE SIGN YOU WANT - THE SERVICE YOU NEED



# ETON MESS

## *Tray Bake*

The classic twist on the quintessential pavlova gets reimaged once again in this mouth-watering traybake by Adele Trathan. Strawberries are used in this recipe, but you can choose any summer fruits to suit your personal preference.

### INGREDIENTS

#### *For the sponge*

200g (7oz) unsalted butter, softened  
200g (7oz) caster sugar  
180g (6oz) self-raising flour  
1 tbsp vanilla extract  
4 medium-sized eggs  
100g (3½oz) ground almonds  
5 tbsp double cream  
200g (7oz) strawberries, hulled and sliced

#### *For the topping*

250g (9oz) double cream (whipped)  
4 shop-bought meringue nests (broken up)  
200g (7oz) strawberries, hulled and sliced  
Icing sugar and mint leaves to decorate (optional)

### METHOD

**1** Grease and line 20x30cm brownie pan with baking paper. Heat oven to 160C (140C fan/320F/gas 3). In a large bowl, beat together the butter and sugar until it is light and fluffy. Add the vanilla essence and then the eggs, one by one, mixing as you go. In a separate bowl, mix the flour and ground almonds. Gradually add the dry ingredients to the wet until you have a thick batter, then gently stir in the double cream and the strawberries.

**2** Pour the batter into the prepared tin, distributing the berries as evenly as you can across the mixture. Bake for 35-40 minutes, or until a skewer inserted into the centre of the cake comes out clean. Leave the sponge

in the pan for ten minutes before tipping out onto a wire rack to cool.

**3** Meanwhile, in a separate bowl stir the meringue pieces and most of the strawberries (reserve some decoration) into the whipped double cream. Serve an individual portion of

sponge with a spoonful or two of the topping mixture. Decorate with pieces of strawberry, mint leaves and a sprinkle of icing sugar. Enjoy the taste of summer!





# Enjoy your conservatory all year round



**2 FREE  
PANELS**

\*Quote Ref  
BEACON0622



• **WARMER IN WINTER** • **COOLER IN SUMMER**

*"It's the best home improvement we  
have ever made. Our conservatory is  
now our dining room in the garden."*

Mike Millis, Middleton On Sea

Our lightweight insulated panels make  
your conservatory:

- **Warmer** in winter • **Cooler** in summer • **Reduce** bills
- **Quieter** in bad weather • Installed in less than a day

To find out more about the benefits that the Green  
Space system can offer and see if your conservatory is  
suitable for any potential subsidies, contact us now.



**0800 08 03 202**  
[www.greenspaceconservatories.co.uk](http://www.greenspaceconservatories.co.uk)

GRAND  
DESIGNS LIVE

ideal  
HOME SHOW

8K<sup>+</sup> HAPPY  
CLIENTS



Terms and Conditions apply.  
Green Space UK, Unit 8 BH24 1PD, Registered  
No. 8542786, as shown on FCA authorisation,  
trading as Green Space UK, is a credit broker  
and is authorised and regulated by the Financial  
Conduct Authority. Applies to orders of 8 panels  
or more. Not to be used in conjunction with any  
other marketing offer



# GREEN MEADOWS, COLWELL ROAD

## Shared Ownership Apartments



**G**reen Meadows is a new development in Freshwater for those aged 55 and over. Benefitting from surrounding countryside and less than half a mile from the sea, these apartments are perfect for those wanting to live independently with the peace of mind that support is there for you as and when required via a 24-hour wellbeing team who are there to support residents on an unplanned basis via use of pull cords located within the apartment, meaning independent living can be maintained. Apartments can be purchased between a 25-75% share.

### MAIN BUILDING FACILITIES

A welcoming community atmosphere is at the heart of the Green Meadows Development and is the focus of many of the facilities providing supported, settled and safe living for all residents.

The ground floor of the building is where many of the facilities are located including an activities room, communal

lounge, dining room and tea & coffee making facilities. There is also a communal washing & drying room, mobility scooter store with charging points, activities & lunch club, hairdressers and a shop run by residents. Also, a minibus takes residents to different locations each week. Available apartments are situated on the first, second and third floor with lift access to all floors as well as stairs.

Assisted bathrooms are available if needed. These are situated throughout the building. There are also guest suites if visitors wish to stay overnight and prefer to have their own suite rather than staying in an apartment, these can be reserved at a small cost.

The building and all apartments are wheelchair accessible and the wellbeing team are registered with the Care Quality Commission and the service is delivered to meet all regulatory requirements with all staff trained to a high standard and hold the necessary background checks.

### RECEPTION

Located as you enter the

building is a small seating area with communal hot drink facilities, communal disabled WCs, scheme shop, hairdressers and mobility scooter storage. The reception desk supports residents and visitors when required.

### TWO-BEDROOM APARTMENTS ENTRANCE HALL

Upon entering the apartments there is a spacious entrance hall with storage and access to the bathroom, both bedrooms and to the kitchen/lounge.

### KITCHEN/LOUNGE

25'4" x 11'1" (7.7m x 3.4m) Benefitting from spaces to fit a fridge/freezer and a washing machine or dishwasher (the communal clothes washing facilities are available to all residents) there is also an eye-level oven, ceramic hob and a stainless-steel sink located in the kitchen.

### SHOWER ROOM

9'6" x 7'3" (2.9m x 2.2m) This wet room is a 'Jack and Jill' style room, meaning access is gained from the hallway as well as main bedroom.

A pull cord is situated next to the WC, there is a touch light mirrored cabinet over basin and a heated towel rail.

### MAIN BEDROOM

17'9" x 9'6" (5.4m x 2.9m) A spacious double room with shower room access and plenty of room for drawers and/or a wardrobe.

### BEDROOM 2

12'9" x 7'10" (3.9m x 2.4m) Perfect size for a small double or single bed leaving plenty of space for clothes storage or a hobby room if preferred.

### OUTSIDE

A large car park for residents and visitors with disabled bays is located at the front of the building. Communal areas with outdoor seating facilities accessible through double doors from the communal dining area or through gated side access. ③

Tel: 01983 538080

Email: [newhomes@hrdiw.co.uk](mailto:newhomes@hrdiw.co.uk)

[www.hose-rhodes-dickson.co.uk](http://www.hose-rhodes-dickson.co.uk)

\*Please note measurements are approximate & should not be relied upon. Different measurements apply for apartments 60 & 77.

\*\*Rent, Service & Wellbeing Charges apply.





Cherry Tree  
shutters  
Changing your view

20%  
SALE  
NOW  
ON!

01983 640174

[www.cherrytreeshutters.co.uk](http://www.cherrytreeshutters.co.uk)

Providing interior plantation shutters to cover any window style or colour including; Square, Rectangle, Circular, Arched, Bays and Patio Doors.



\*Terms & Conditions Apply

Checkatrade.com

0%  
FINANCE  
AVAILABLE

## Accounting & Finance Careers Fair

*Start your career in accountancy*

Join us at our office, for refreshments to celebrate A Level exam success and interact with the team at Moore (South), to find out if a career in accounting and finance at a leading South Coast accounting and business advisory network is a good fit for you.

**DATE:** 22nd August 2022

**TIME:** 15:00 - 17:00

**VENUE:** Moore (South), 9 St John's Pl, Newport PO30 1LH

**RSVP BY 18TH AUGUST:** [newport@mooresouth.co.uk](mailto:newport@mooresouth.co.uk)



MOORE

HELPING YOU THRIVE IN A CHANGING WORLD







# Do You Want Sauce With That?

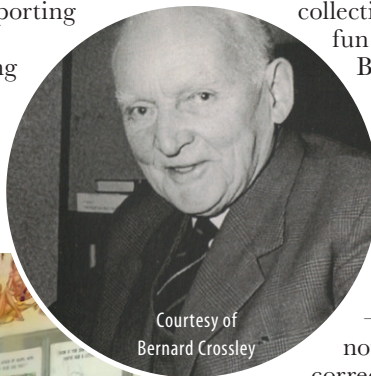
If you head to the Royal Victoria Arcade on Union Street this summer, you'll discover a quaint little museum which pays homage to Donald McGill — the king of the saucy seaside postcard.

From the 1890s to recent times, the seaside postcard was a favourite way to send messages to family and friends — now mainly bypassed by texts and emails.

In a 58-year career, Donald McGill drew more

than 12,000 designs. These ranged from supporting the suffragette movement, raising the country's morale against Kaiser Bill and Hitler in the two

World Wars, and a whole collection of poking fun at the British on their seaside holidays. A lot of the humour is typical of the music hall comedians — definitely not politically correct!



if the cards were obscene. In 1953, following a complaint in the Isle of Wight Times, five shops in Ryde were raided and over 5,000 cards seized. Following a trial, nearly 3,000 of them were destroyed.

Those 'obscene' cards have been reprinted, and, along with many others, can now be purchased from the Donald McGill Saucy Seaside Postcard Museum, part of the Museum of Ryde, underground in the Royal Victoria Arcade, Union Street, Ryde.

Run by volunteers, the Museum of Ryde is open from 11am to 4pm, Tuesday, Thursday, Friday and Saturday. Entrance for adults is £4, with under-16s free. ☺

*In a 58-year career, Donald McGill drew more than 12,000 designs*

Complaints about the vulgarity of some cards had started in the early 1900s (not just McGill — there were many other artists), and by the end of the second World War local censorship committees had been formed in many seaside towns around the country. Each committee had its own benchmarks for obscenity — cards banned in one town could be bought in the next.

On the Island, it was left to Ryde magistrates to decide



25% OFF  
 ENTRY WITH  
 THIS VOUCHER  
 Valid until August 31st







## THE ISLAND HAS TALENT 2022

Islanders are being invited to showcase their talents for a special competition on Ryde Seafront.



Photographs by Robin Crossley



Applications are still open at  
[theislandhastalent.com](https://theislandhastalent.com)

**T**he Island Has Talent is calling on people who can dance, sing, play an instrument, perform magic, or even stand-up comedy.

Musician and star of Britain's Got Talent in 2019, Derek Sandy, is inviting people to get involved, with a prize of £1,000 up for grabs.

If selected, you will be asked to perform before the official judging panel and a live audience at Ryde Harbour this summer.

The Island has Talent was started by Derek Sandy in partnership with Beach House Café in Ryde. Taking place over four free shows on the Eastern Gardens by Ryde's sprawling sandy beaches.

Heats one and two already got underway last month, with more exciting heats and the final due to take place on Ryde Seafront this month.

Island Has Talent 2022 promises to show off the best talent the south has to offer.

Popular Isle of Wight performer, Derek Sandy, who is the face of The Island Has Talent, said:

"There's a lot of talent on the Island, young and old, but they don't always get the chance to go to the mainland. It's expensive and they may not know what to do. This is where I got the idea.

"The judges select three contestants that they think deserve to go through to the final and the audience get the chance to vote for a crazy card, through Instagram.

"You can expect to have a good laugh. Some emotional. It's a mixture. It's raw talent. It's natural and it's raw.

"There's loads of food, loads of drinks, ice creams, slushies.

"It's been loads of fun so far and there's some really great acts coming up."

Everyone is welcome to come down to Ryde Seafront and watch on the following dates:

Heat 3: 6th August at 12pm

Final: 22nd August at 12pm



HERE'S SOME OF THE FANTASTIC ACTS WHO THE ISLAND HAS TALENT HAS ALREADY SEEN:



### MATTHEW BUSBRIDGE

A theatrical singer from Ventnor.  
 "This is one of the biggest events that I'm going to be taking part in. I feel like I like to show people what I can do and the voice I've got."



### HARRY LEE

Plays piano, piano-accordion, trumpet, saxophone.  
 "My friends would be surprised seeing me on a bigger stage than the school assembly."



### ANNELISE FROM NEWPORT

"Someone said to me, you should do this. This would give you the next step up in music. And I was like wow, this is a big thing. I want to have a career in music, whether that be on stage or making music on my own."



### RYDE ACADEMY ELITE TEAM

Ryde Academy Elite Team did not fail to impress at the live auditions — with a choreographed dance delivered with precision timing.



## THE ISLAND HAS TALENT 2022 – REGISTER NOW!

We are looking for singers, dancers, comedians, jugglers and more! Show us your talent!  
 Register now for the last Heat on 6th August. Grand Final on 22nd August.

Hosted by  
 Derek Sandy



# THE WINNER WILL RECEIVE A £1,000 CASH PRIZE.

Free to attend and watch with all the family on Ryde Seafront.

FANTASTIC  
 COMPETITION



## WIN A PARADISE HOLIDAY TO BARBADOS & PS5!

Enter our competition and you could win an all expenses paid holiday for two in Barbados and a Playstation 5.

Scan the QR code to enter



SCAN ME







NEWS FROM

**COWES WEST & GURNARD**

by Cllr Paul Fuller

**RHYTHMTREE FESTIVAL:** I've only heard positive feedback from residents. A huge thank you to organisers and everybody involved!

**BEACH WORKS:** I can confirm coastal protection works carried out last month west of Gurnard Sailing Club received necessary consents and has been monitored by Officers from the IW Council.

**MEMORIAL BENCHES:** I've received complaints concerning flowers and other items being left on benches. Although benches are a lovely reminder to those who pass away, please act sensitively when remembering loved ones!

**DISPOSABLE BARBECUES:** If disposable barbecues can be avoided, brilliant, if not, please ensure debris is safely disposed of. This follows incidents where discarded barbecues have caused fires and burns to people when trodden on.

**COLD CALLING:** I've contacted Trading Standards following residents complaints. To prevent callers please ensure you display your No Cold Calling sticker. Let me know, or pick one up from Cowes Library if you require one.

**THEFTS AND BURGLARIES:** To avoid opportunistic walk-in burglaries please make sure that front doors and outbuildings are secured.

**ELECTRIC VEHICLE CHARGE POINTS:** With escalating fuel costs I am continuing to work to identify a location for a local charge point for vehicles in and around Cowes and Gurnard... Please let me know your thoughts!

**SOUTHERN WATER:** It was reported that Cowes and Gurnard will be the second location to benefit from water butts. This is timetable for March 2023.

**ENERGY CRISIS:** Martin Lewis continues to provide updates on the best deals with the pending energy crisis. These can alter on a regular basis. For details visit: [www.moneysavingexpert.com](http://www.moneysavingexpert.com)

**SUMMER SURGERIES:** Surgeries continue during August. If you need urgent support please text or call me! To note with most people taking leave, it may take longer than usual to resolve issues.

☎ 289595/ 07935 090 835

✉ [paulfulleriw@gmail.com](mailto:paulfulleriw@gmail.com)

## Drones Deliver Chemotherapy Drugs in Half an Hour in NHS Trial

By Samuel Osborne - Sky News

The NHS is trialling the use of drones to deliver life-saving chemotherapy drugs to the Isle of Wight - within half an hour.

Doctors believe the pilot scheme, which will ferry the drugs from a hospital in Portsmouth to the Island, could be the first step towards "same-day delivery" for the health service.

It is hoped that drones will enable doctors to order drugs and medical equipment from anywhere in the country for delivery that day.

In the trial, chemotherapy drugs will be delivered from a pharmacy at Portsmouth Hospitals University NHS Trust to St Mary's Hospital on the Isle of Wight.

The drone will cut delivery times from four hours to 30 minutes, as one flight will replace two car journeys and one hovercraft or ferry journey per delivery.

NHS England officials said chemotherapy is difficult to transport as some doses have a short shelf life.

The new method,



launched in partnership with tech company Apian, will save time and money and offer a better option for cancer patients living on the Island, many of whom have to travel to the mainland for treatment, officials added.

After the Isle of Wight the drone programme will be trialled in Northumbria.

Amanda Pritchard, Chief Executive of NHS England, said:

"Delivering chemo by drone is another extraordinary development for cancer patients and shows how the NHS will stop at nothing to ensure people get the treatment they need as promptly as possible — while also cutting costs and carbon emissions".

## First Look at Newport's Drive-Thru Costa Coffee

By Louise Hill LDR

We're getting a first look at the Island's first drive-thru Costa Coffee — thanks to drawings submitted to the Isle of Wight Council, as part of plans for Newport's St George's Retail Park.

The big brand is to join McDonald's in having a drive-thru on the former home ground of Newport FC.

Further designs have now been submitted by the coffee giant, as it aims to finalise the layout of its new store, on the site next to Asda.

They include a menu board and an order collection point.

In the images, the brand's logo and coffee beans have



been added to the side of the building and the planning application seeks permission for illuminated and non-illuminated signs.

View the plans, 22/00848/ADV, on the Isle of Wight Council's planning register.

The proposals, submitted by Isle of Wight-based developer Tony Wake and his company South Coast Leisure, were recently re-approved by the Isle of Wight Council.

A change in the plans saw Costa added and the amount of retail floorspace reduced.

*"We don't just sell hearing aids,  
we provide total hearing care"*

**Wight Sound Hearing**

Registered Healthcare Professional

Colin Stockdale RHAD MSHAA AIHHP (Executive Member)

12 High Street, Shanklin PO37 6LB

Tel 01983 86 59 59

All Hearing Tests and Consultations are FREE

Latest Digital Testing & Fitting Equipment

Video Oscope (see inside your own ear)

Try Before You Buy OR RENT a Digital Hearing Aid (from £1 A DAY)

EVERY Brand of Hearing Aid Available in the UK

Free Home Visits

Easy Payment Plans





## 'People First Zone' on Newport High Street

By Dominic Kureen

Pedestrian improvements have been approved for Newport High Street — which will see a large stretch of parking removed and pavements widened.

As part of the Newport High Street Heritage Action Zone, £3 million improvements, in a 'People First Zone', were last month approved by the Isle of Wight Council's cabinet.

The plans include removing 22 parking spaces on the High Street between

St James's Street and Holyrood Street; widening footways to help slow down traffic; and accessibility and appearance improvements.

Cabinet member for regeneration and business development, Cllr Julie Jones-Evans said when Historic England visited the town they noted the domination of cars on the High Street and how the Georgian buildings were largely ignored.

She said: "It is just a step towards a better world, we want to see more people walking, cycling, fresher air; we want more space to be with each other, shop and dwell. Let's get back to our lives."

There were concerns, however, over the number of responses to the consultation, and there was a call to defer the decision until more views were heard.

The council did carry out a consultation where 182 responses were received — 63 per cent supporting the plans and 32 per cent against — and community events were held.

Cllr Ian Ward warned by removing the parking it would drive people towards shopping in the supermarkets on the outskirts of town and potentially damage trade.

Cllr Jones-Evans, however, said since the introduction of the hour-free parking in short-stay car parks in the town centre, there were 8,000 extra visits to Newport in the first six weeks of the

scheme.

She also said, anecdotally, she had been told fewer people had gone to Asda, the on-the-edge-of-town supermarket, and it was not the death of the High Street.

Answering fears it would lead to total pedestrianisation of Newport High Street, Cllr Jones-Evans said it was scaremongering but she felt fine about the scheme being approved by cabinet and said they could not please everyone.

Planning will now go ahead to implement the scheme.

*"We want to see more people walking, cycling, fresher air; we want more space to be with each other, shop and dwell. Let's get back to our lives."*



NEWS FROM

### CENTRAL NEWPORT

by Cllr Julie Jones-Evans



It's all steam ahead for the pedestrian improvements in Newport High Street and St James' Square.

The key proposals include:

- Wider pavements on both sides of the High Street;
- Narrowing the road to encourage drivers to slow down;
- Extending St James' Square to provide new public space around the Victoria Memorial;
- New areas of planting, more seating and cycle racks installed in clusters to minimise clutter;
- Three new dedicated parking bays for disabled people on the High Street;
- Extending the existing High Street loading bay.

While some on-street parking will be lost under the plans, alternative parking is available close-by. This includes almost 250

spaces at Sea Street, Lugley Street and Chapel Street/New Street where shoppers and visitors wishing to park for up to one hour can park for free.

We have another weekend of excitement coming up on 10-11th September. Car Free Day will take place this year on the Saturday and Sunday will have the final leg of the Tour of Britain coming through Gunville, Carisbrooke and Newport High Street. Thanks to Newport and Carisbrooke Community Council we will be having the big screen showing the race, entertainment and cycling related displays. It's a big day for the Island so it's important we look our best as millions of people will be watching.

521068/07886437688

julie.jones-evans@iow.gov.uk



MILLENNIUM  
WINDOWS LTD

UPVC Doors & Windows, Conservatories and Fascias  
& Gutter Installations on the Isle of Wight.

CALL US ON 01983 810 888

millenniumwindowsiow.co.uk facebook.com/millwindows





NEWS FROM

**COWES MEDINA**

by Cllr Lora Peacey-Wilcox

**HEAT:** I do hope you have all found the best way of staying safe, well and cool during our heatwave. Covid that has certainly taken a grip. After 27 months being free from the virus, I succumbed and was quite unwell for a couple of weeks. Thinking of you all.

**COWES WEEK:** Starting on Fri 29th to Sat 6th August. To be honest, I've no idea what is happening! So, I put in [www.cowesweek.co.uk](http://www.cowesweek.co.uk) and hey presto.....a list of a number of events, all listed in one place: The Anchor, The Parade, The Yacht Haven, Northwood House, and the high street. From a Youth Day to a Royal Navy day, to trying out UKSA offers – it's all there. So plan your visits! Hope to see you around...might just have to go and see the Tom Jones tribute act!!

Again, enjoy, stay safe!

**WATER FOR DOGGIES:** What a lovely surprise to see so many bowls of water out for doggies. Thank you so much, I notice Baring Road did very well!

**EVENTS:** A superb and easy way to find out what is going on where. A quick click to: [islefindit.org](http://islefindit.org).

uk and hey presto, the date and events come up. How super is that?! Although how you choose, I don't know! So much going on our Island and mostly always run by volunteers.

**HELP:** It is out there. Please don't sit and worry and stress. Islehelpme is a superb route to start. 0800 1448848 Mon-Fri 9-5pm. Or 24 hours online [www.islehelp.me](http://www.islehelp.me)

There are very easy links to all kinds of support, including food, fuel, bailiffs, family relationships, housing, it's all there. PLEASE make the step for turning things around.

**WORK AND JOBS:** From national press to local, they are all saying we have a crisis and a void of jobs. Most jobs are advertised on their websites, so do look around. The council are working to see how they can have all of the jobs in one place or at least good signposting. From what I'm hearing if you want work – it's out there!

📞 645765 📧 [lora08@sky.com](mailto:lora08@sky.com)

## Isle Of Wight Book Award Winners to be Announced at Grand Literary Lunch



An awards ceremony, held at the Island Sailing Club in Cowes this September, will celebrate the Island's literary talent.

The winners of The Isle of Wight Book Awards 2022 will be announced at the Grand Literary Lunch on Monday September 12.

Three distinguished authors will read from the winning books, which have been judged in three categories: fiction, non-fiction and children's books.

Although the shortlists will be announced beforehand, nobody will know who's won until the judges reveal all at the lunch.

All shortlisted authors will receive a certificate, while the winners will

receive a £100.

One book will also win the Isle of Wight Book of the Year award.

Tickets are now on sale for the event, which will be held at the prestigious venue, from 12.30pm until 3.30pm. Guests will enjoy a three-

course meal, glass of prosecco and raffle — as well as meeting three nationally known authors in the flesh: Alan Titchmarsh, Joanna Trollope and Hunter Davies.

The aim of the Isle of Wight Book Awards is to promote interest in the Isle of Wight and encourage local authors to write and possibly self-publish their own stories.

These non-profit awards are sponsored by local firms: Hovertravel, IW Festival and Hose Rhodes Dickson plus Medina Bookshop in Cowes and Monkton Arts in Ryde.

**Tickets for the lunch at £35 each now available from: Island Sailing Club ([islandsc.org.uk](http://islandsc.org.uk)) and Isle of Wight Book Awards ([iowbookawards.co.uk](http://iowbookawards.co.uk)).**

# WHITE WINDOWS

THE ISLAND'S PREMIER DOUBLE GLAZING COMPANY

## ENERGY BILLS INCREASING?



Our double and triple glazed eco-tech systems delivers a step-change in the use of recycled material and content in a new generation of sustainable and energy efficient PVC-U windows and doors.

With an A+ rating for material type from the Building Research Establishment in its Green Guide, it makes the eco-tech systems among the UK's most sustainable window and door system options.



- W** replacing old windows, doors and even conservatories can reduce heat loss
- W** along with your roof and walls, old doors and windows can allow heat to escape
- W** taking advantage of newer technology can transform your home
- W** act now and help keep the warmth in

**WE CAN HELP  
CALL TODAY  
01983 523552**

[whitewindows.co.uk](http://whitewindows.co.uk) - [info@whitewindows.co.uk](mailto:info@whitewindows.co.uk)

## Mountbatten Named Tour Of Britain Charity

By Dominic Kureen

Mountbatten will be the official charity for the final stage of this year's Tour of Britain.

The finale of the prestigious event, featuring the world's best riders, will be held on the Island on Sunday September 11.

Mountbatten will work alongside the tour organisers to maximise opportunities to promote its brand and services over the race weekend.

"We are really excited to be part of what promises

to be a really amazing spectacle," said Nigel Hartley, Mountbatten CEO.

"All eyes will be on the Island for the Tour of Britain race and I am delighted we can be involved.

"This will be a fantastic opportunity to raise the profile of Mountbatten, our work and how we support people in so many ways."

Locals and visitors are expected in their thousands to visit the Island to watch the race. It will also be televised to a global audience.





## Beauty Salon Vacating Ventnor as Brighstone Beckons

By Louise Hill LDR

From Ventnor to the Isle of Wight Pearl — an Island beauty salon is on the move as business continues to grow.

Fabulash, currently based on Pier Street in Ventnor, is on the move and plans to expand to a former holiday chalet and office space on the Military Road.

A planning application has been submitted, by Fabulash's owner, Kay Gower, to change the use of retail and leisure complex space in Brighstone into a beauty and hair salon.

If the change of use is granted for the empty building, by the Isle of Wight Council, the salon is expected to move in by the summer.

No external changes are

*Fabulash, currently based on Pier Street in Ventnor, is on the move and plans to expand to a former holiday chalet and office space on the Military Road.*

proposed, apart from general maintenance.

Only cosmetic interior changes are planned.

The beauty salon has proposed opening hours varying across the week but would be closed on Sundays and Mondays.

You can view the plans, 22/00829/FUL, on the council's planning register.

## U3A Celebrates 40 Years With Anniversary Events

The Isle of Wight branch of u3a is celebrating the organisation's national 40th birthday with a series of events across the Island next month.

The current group established on the Island in 2019, and provides members with great days out and opportunities to learn and socialise.

It's largely aimed at people who are no longer in full time work, who would like to 'learn, laugh, live' — and is run by members for members.

Throughout September, there will be events to mark the anniversary, including a stand at Wolverton Manor Garden Fair (3rd-4th

September), a coffee morning at The Bargeman's Rest (7th from 10.30am), a walk from the Highdown Inn (21st)

and events in St Thomas Square which will include a choir and the Bloodstone Border Morris group (24th 10am-4pm).

Everybody is welcome to come along and find out a little more about the group.

So whether you fancy taking up a new language, a new craft, or would just like to meet and chat, or enjoy strolls with good company, u3a has so much to offer.

Visit [www.u3awight.uk](http://www.u3awight.uk) to find out more.



Spice up your life, meet new people, learn new skills, develop new interests.

u3a opens the door to a world of opportunities in your work-free years. Run by members for members.



Contact: Carol Bradshaw (Chair)  
Tel: 07748886246

Email: [chair@u3awight.uk](mailto:chair@u3awight.uk) [www.u3awight.uk](http://www.u3awight.uk)



Proud to be the official charity of the Tour of Britain Isle of Wight stage

The riders will start in Ryde and make their way to The Needles via most of the main Island towns and parishes.

Further details about Mountbatten's involvement in the race will be revealed soon. Details about the race can be found online.



The Island's  
**CARPET & FLOORING  
SUPERSTORE**



**OPEN 7 DAYS A WEEK**

MON - FRI 9AM - 6PM

SAT 9AM - 5PM

SUN 10AM - 4PM

**01983 533150**

12 Hurstake Rd, Riverway Industrial Estate,  
Newport, Isle of Wight, PO30 5UU



# NO DEPOSIT INTEREST FREE CREDIT

**Subject to status on orders over £495**  
Excludes fitting charges

Credit subject to status and affordability. Terms & Conditions Apply. D&S Carpets is a credit broker and is Authorised and Regulated by the Financial Conduct Authority. Credit is provided by Novuna Personal Finance, a trading style of Mitsubishi HC Capital UK PLC, authorised and regulated by the Financial Conduct Authority. Financial Services Register no. 704348. The register can be accessed through <http://www.fca.org.uk>

[www.dscarpets.co.uk](http://www.dscarpets.co.uk)

Rugs

Luxury  
Vinyl Tiles

Wood & Natural  
Flooring

Vinyls

Carpets

## ISLE OF WIGHT, WE CAN'T AFFORD TO WASTE WATER

The water we all rely on comes from our local rivers. To protect them, together we need to use less this summer.

We're investing more than ever to find and fix leaks on our network. You can help too.

**Visit [southernwater.co.uk/save-water](http://southernwater.co.uk/save-water)  
to find out more about using less.**



from  
**Southern  
Water** 

7002\_722





**Direct Cremation Specialists based here on the Isle of Wight for the Isle of Wight**  
**The Island's only Independent Funeral Directors who are dedicated to this style of service**  
**Affordable Direct Cremations. Separate the Cremation from the Celebration.**

**We pride ourselves by offering great value for money without any compromise on the care given to you and your loved ones.**

**We are proud to be the longest service Island Independent Family Funeral Directors.**



**Direct cremations from £1,495**  
**Funeral Plans from £1,750**

**Call 01983 632598** [info@isleofwightdirectcremation.co.uk](mailto:info@isleofwightdirectcremation.co.uk)  
**[www.isleofwightdirectcremation.co.uk](http://www.isleofwightdirectcremation.co.uk)**

#### **What is direct cremation?**

Quite simply, it is an alternative to a traditional funeral. The cremation takes place unattended, giving you the freedom to celebrate your loved one at a time, place and venue of your choice.

#### **How much does a direct cremation cost?**

We have 2 options to choose from:-

1. Our 'Island Way' is £1,695.00 - this is for the direct cremation at the Isle of Wight Crematorium
2. Our 'Wessex Way' is £1,495.00 this is for a direct cremation at a mainland crematorium

We offer this option for families who would like to take advantage of savings that mainland crematoriums offer.

#### **Can I get help with the costs?**

Yes, if you are in receipt of benefits you may be entitled to a payment of up to £1,000 from the Department of Work and Pensions, so we advise contacting them to enquire.

#### **What is the difference between Isle of Wight Cremation and a mainland provider?**

We are based here on the Island, we can take your loved one into our care promptly and without the distressing delay of travelling over on the ferries.

We can meet you face to face at our Island offices. Or make all arrangements over the telephone.

Whereas mainland providers often courier the ashes back, we provide a more personal service by hand delivering them to you at your home, or you can come in and collect them at either of our offices. We are locals and understand our local community.

#### **Do you offer prepaid direct cremation funeral plans?**

Yes, we do and we use Golden Charter, the UK's market leader for providing prepaid funeral plans to Independent Funeral Directors. Your funds are safe and placed into the Golden Charter Trust. Recently we were awarded by Golden Charter as the best funeral planner for 2020 in the Southern England Region.



# VENTNOR MOBILITY CENTRE



**10% OFF**  
ON PRODUCTION  
OF THIS ADVERT



**Regain your independence...**

Agents for scooters, rise/recline chairs, stairlifts and all available mobility aids



**FREE HOME SURVEY! We also Buy & Sell**  
- Can't come to us, we'll come to you!

Unit 4, Old Station Road, Off Mitchell Avenue,  
Old Station / Tunnel, Ventnor PO38 1DX

**Tel: 01983 855545**

**PRE-BOOKED APPOINTMENTS ONLY  
TO AVOID DISAPPOINTMENT**

**isleofwightradio**

## TOPPING IN THE MORNING

**JOIN US WEEKDAYS FROM 6AM**



*Wake up with Paul, Hayley, Heather and Jamie*



**FM107 & 102**  
OR TEL YOUR SMART  
SPEAKER TO PLAY  
"ISLE OF WIGHT  
RADIO"

f isleofwightradio @iwightradio @iwightradio

## Elevator & Escalator Servicing and Maintenance

Around the South Coast and Isle of Wight



### Services we offer...

- Lift service/Maintenance
- Lift Repairs
- Lift Refurbishment
- Lift Installation
- LOLER Inspections
- All Escalator Works
- Maritime (Ships) Lift Works
- Scenic Lift Glass Cleaning



Call us on: **01983 722713** Email: [coastal@deltronlifts.co.uk](mailto:coastal@deltronlifts.co.uk) Visit: [deltronliftscoastal.co.uk](http://deltronliftscoastal.co.uk)

Office 4, Exchange House, St Cross Ln, Newport, PO30 5BZ





— | LEGAL & FINANCIAL | —

# Eldridges' Freshwater Office Welcomes Ian Bradshaw

**A popular Isle of Wight solicitor has joined Eldridges' office in Freshwater.**

**I**an Bradshaw joined Eldridges in January 2021, based in the busy Newport office specialising in residential property as well as wills, probate, powers of attorney and trust work.

He quickly established himself as an asset to the firm and a key team player in its future success. Ian was appointed an Associate Director of the firm in April 2022, and has since made the decision to move to the Freshwater office, where he will be more available to the residents of West Wight and can continue to expand his client base, and offer support and advice in both areas of his work. Ian will, of course,

continue to accept work Island-wide and beyond, and as a key member of the Eldridges team he will still frequent the Newport office.

Ian was born and brought up on the Island. He gained a degree in Politics from Exeter University, and subsequently a degree in Law through the College of Law in Guildford. Having qualified as a solicitor in 2010, he gained knowledge and experience at another local firm prior to joining Eldridges. Ian continues to enjoy working with a diverse range of clients, including individuals, developers and companies alike. Ian has built up excellent working relationships with other solicitors, estate agents and other professionals in the

industry and receives many recommendations from them.

Ian will continue to work in both residential conveyancing and private client departments, as he enjoys the variety each aspect provides. He is known across the Island as a keen and diligent solicitor with a passion for delivering a high level of customer service. He comes highly recommended by previous clients, and many return to seek his advice in subsequent matters, knowing they will get an objective, professional service and a high level of client care and compassion in more sensitive matters. His instructions are received from local clients and those living further afield.

From July 2022, Ian will

be based at the Freshwater office which can be found on Avenue Road, Freshwater, PO40 9UZ, where there is plenty of parking and friendly staff to assist with your legal needs.

In the Newport office, Ian's relocation makes room for Tara Wheeler who is being welcomed to the conveyancing team in August. Tara will be working closely with Ian, Laura Rhodes, Rachel Day and Paula Griffiths in residential conveyancing. Tara is an experienced conveyancer and is currently completing her studies towards becoming a solicitor. She is knowledgeable and easy to communicate with and will be an asset to the busy team. <sup>③</sup>



# LEAVING SCHOOL AND LOOKING FOR A CAREER?

Talk to HTP in Newport now for independent, expert advice. We've got real jobs with Apprenticeships and Traineeships, or full-time on-campus courses.

● **Our one-year courses will teach you new skills**

Start your career by gaining new skills and qualifications. With our industry-experienced tutors and smaller class sizes, we're the Island's friendliest college. We have a wide range of one-year courses starting in September at our Riverbank Campus in Newport. If you need to, you can study Maths & English too.

● **Or start work now with a workplace Apprenticeship**

At HTP we work with great employers on the Island and across the South. We have a track record of placing young people in real jobs, with high levels of success. Talk to us today and we can build a training programme that gets you started in the world of work – with real wages and no tuition fees.

## SOMETHING FOR EVERYONE

Our wide range of Apprenticeships and Full-time Courses includes:

- Health & Social Care
- Hospitality & Tourism
- Sport & Fitness Instructing
- Outdoor Pursuits
- Marketing & Digital
- Professional Cookery
- Business Administration
- Childcare & Education
- Horse Care & Riding
- Nail Technology + more!

GET  
INDEPENDENT  
CAREERS  
ADVICE  
FROM HTP

Don't wait till September – sort your career today with HTP Apprenticeship College

Visit [http.ac.uk](http://http.ac.uk) • or call 01983 533926





LEGAL & FINANCIAL

# The Care Cap

## Is it as good as it sounds?

**From October 2023, there will be a lifetime cap of £86,000 for the cost of a person's care. The premise is that every individual requiring care will pay a maximum of £86,000 for their care in their lifetime – sounds good doesn't it?**

**T**he government have now set out more detail about how this is expected to work in practice and what this means for people requiring care at home and also in a residential setting.

Those requiring care currently fund their own care if their assets exceed more than £23,250. This upper threshold will increase to £100,000. The lower cap which is currently £14,250 is rising to £20,000. This means that if you have assets between £20,000 and £100,000 you will pay a contribution from your capital; for every £250 in capital you have, you pay £1 a week towards the cost of your

care. For example, if you have £90,000 in cash assets, you would contribute £280 a week for your care from the capital. Your income is also taken into account. If your assets fall below £20,000 you will no longer contribute from your capital but your income is still taken into account.

Your property is included in the value of your assets if a property disregard does not apply – property disregards include where you are having care at home or if you are in care but your spouse is still residing at home.

In addition to the increase in the thresholds, any money that you pay towards your personal care cost (whether at home or in

a residential care setting) goes towards your care cap which is set at £86,000. There is a distinction between the cost for care and the cost of Daily Living Contribution (DLC) and provided you have more than £20,000, you will continue to pay towards the DLC even when you hit the care cap of £86,000. The DLC covers the cost of rent, food and utility bills and has been set at £200 per week rising with inflation (so likely higher when the cap starts). The reason for this is so that people living at home are not penalised as they would still be paying their DLC as normal.

Whilst this is better than the current system, people will still end up paying more than

the £86,000 'cap' due to this addition of the DLC.

People who are in care or are receiving care already will not start paying towards the cost until October 2023 so any money being spent now does not count. Every person that needs care will also need to be assessed by social services so that they can open up a care account for each individual. If you do not have an assessment then any money paid for care does not count towards the care cap.

Planning for the future is therefore very important and there may be options available to you in your Wills which can protect your assets for your future generations. ③



for those  
jobs **outdoors**



*Expert advice, unbeaten on price*

• MAKITA • JANSEN • KUBOTA • NILFISK • HAYTER • TORO • CUB CADET AND MANY MORE



**STUBBINGS BROS**  
meeting your machinery needs

CHALE GREEN, VENTNOR, I.W, PO38 2JN

☎ **551443**

SMS 📞 **07475551443**

just search 'stubbings bros' on Google

# ST HELENS SERVICE STATION

## ALL MAKES SERVICE & DIAGNOSTICS

Factory level diagnostics & services for BMW, Volvo, Peugeot, Citroen and Renault

Genuine parts supplied for Jaguar, Land Rover and Porsche



VOLKSWAGEN • PEUGEOT • RENAULT • CITROEN • BMW • MERCEDES



**MOTs AVAILABLE FOR ALL  
MAKES & MODELS**

**Embankment Road, Bembridge PO35 5NS. Tel. 01983 872332 or 07920 224181**





# SUMMER SCORCHERS

How to revive your garden after the long hot summer.

**I**f you think you suffer from the heat as far as summer goes, think how that sun-baked fares without even so much as a dash of sun lotion.

Of course, any knowledgeable gardener will tell you it's better to take action to protect your flora while the sun is out, but hindsight is a wonderful thing, and if by the time you get to late summer you realise the damage has already been done, there are at least a few techniques that will begin the restoration process for your beloved garden.

Following the guidelines below will give your green space a chance to repair before the bareness of autumn and shivering sensibilities of winter bring about altogether different challenges!

## WATER WATER WATER

It's the fuel that keeps your plants alive, so if the autumn proves to be as stingy on precipitation as, let's be honest, we all hope the summer will be, tending to your land

with plenty of nature's lubricant is the best thing you can do.

Water will stimulate stems, fire up flowers and galvanise grass, but moderation is the key, and as we've all experienced in the past, overwatering is just as bad as underwatering.

So take an organised route to regular hydration in the garden, and gradually bring things back to life.

*“So take an organised route to regular hydration in the garden, and gradually bring things back to life.”*

## NOTHING BUT A DIRTY GRASS

Just as you'd exfoliate your own skin to remove dead matter, do exactly the same with your garden. Remove debris and dust to make the land as ready for replenishment as possible, with simple clearing away of organic residue exposing the ground to moisture and sunlight aplenty.

Of course, if you have a composting area then all these swept-away bits can be used to bolster what will become a fertile store that can be then reintroduced into your flower beds and earth areas.

## FIRST-CLASS FERTILISER

It does exactly what it says on the tin (or bag, or spray), and the best way to boost growth where your living matter is concerned is with an approved, high-quality fertiliser. Giving your garden a helping hand is always smart, though research well and choose a fertiliser that matches your environmental conscience. Remember too not to apply until growth is already well on its way, or you'll simply end up scorching the earth. ▶▶▶





## CUT BACK TO MOVE FORWARD

The more you mow, trim and prune, the quicker your greenery will spring back to life, so this is a great way to get your plant matter back in fully efficient mode.

Many people only realise the full space and beauty of their gardens when they begin cutting back elements that have been left to their own devices; so while a worthy exercise for the flora and fauna of your garden, you'll undoubtedly feel enthused and enlightened at the renewed space you've created.

## STARTING AFRESH

And of course, the best way to get your garden humming again is to invest in it.

Consider plants, flowers and other additions that will suit the rustic autumn season to come.

With a few new purchases you'll be inviting the neighbours round again before you know it! ☺



Advertise with us from as little  
as £38 per month.

**Call 01983 433112**



## JOSH KERLEY TREE SERVICES

ALL ASPECTS OF TREE WORK UNDERTAKEN  
NPTC QUALIFIED & FULLY INSURED

**Tel: 07875 021 682**

## Island Repointing



Natural Stone & Brick

Masonry Waterproofing & Brick Replacement

Damp Proof Course Installation & Cavity Clearance

Vacuum Grinding

Islandwide Coverage

**Tel: 01983 531461 or 07715 397896**

## Mark Carter

*Oil and Gas Engineer*

Worcester Bosch Accredited Installer  
Serving the West Wight and Cowes area

**Tel: 619111 Mobile: 07771 557769**



**Gas Safe**

Registered 28450

**Oftec Oil**

Registered C12814



- Boilers Installed, Serviced & Repaired ✓
- Heating system repairs and upgrades ✓
- Landlord Gas Certificates issued ✓
- Agas & Rayburn Serviced ✓
- Swimming Pool Boiler Services ✓
- Fires, Cookers, Hobs & Ranges installed ✓
- Power Flushes and system Cleanses ✓
- Pre purchase House Inspection ✓
- If it uses gas we can fix or replace it ✓
- Natural Gas & LPG & oil ✓

## ACER RECLAMATION

**WANTED:** Red & Yellow Bricks,  
Floorboards, Flagstone, Welsh Slate,  
Chimney Pots & Stained Glass.

**Call: 01983 565761  
or 07973 745428  
[www.acerreclaimed.co.uk](http://www.acerreclaimed.co.uk)**

## YOUNG PLUMBING

PLUMBING & HEATING SERVICES

**Tel: 01983 339671  
Mb: 07967 225030**

[www.YoungPlumbing.co.uk](http://www.YoungPlumbing.co.uk)

## STUDIOPHASE

The Isle of Wight's local TV experts  
**Call 404406 [studiophase.com](http://studiophase.com)**

Why choose us?

- CAI approved • Friendly, reliable engineers
- We have over 30 years of local knowledge

Freeview

freesat

sky cai

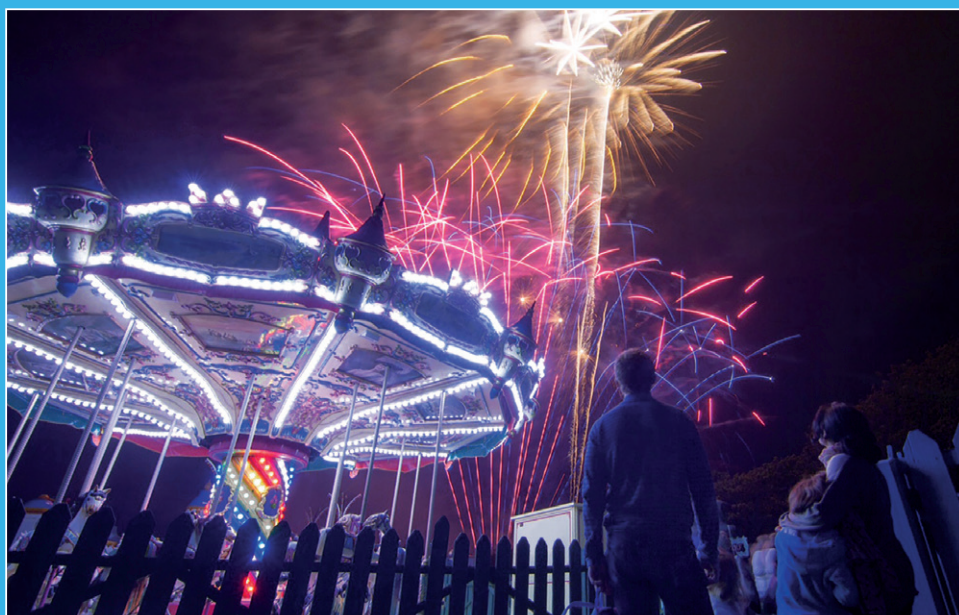




# WIN! Can you spot the differences?



Visit The Needles every Thursday between 4th August & 1st September for a host of family entertainment, live music, and iconic firework displays. Throughout the summer season The Needles Landmark Attraction will be joined daily by a variety of different performers with magic shows, live music, including: Derek Sandy, Randini, Stevo & Kai, Groove Union and many others. Open from 10am until late into the evening for live music, entertainment, shopping and foodie treats.



## THIS MONTH'S PRIZES...

TERMS & CONDITIONS APPLY



£25 Grace's Bakery Voucher  
Courtesy of Grace's Bakery  
178 High St, Ryde, Isle of Wight  
Tel: (01983) 632231  
gracesbakery.uk



2 x Early Bird Breakfast tickets  
Courtesy of Wildheart Animal Sanctuary  
wildheartanimalsanctuary.org



Pizza for Two  
Courtesy of GG's Bar and Restaurant  
ggsiow.com



Two tickets to see Handbagged (14th-22nd October excluding the Sunday and Monday). Courtesy of Apollo Theatre  
Tel 01983210010  
apollo-theatre.org.uk

NAME:

TEL:

ADDRESS:

POSTCODE:

E-MAIL:

- ☐ I am happy to be contacted by the sponsors for marketing purposes  
☐ I would like to receive Beacon Magazine's weekly email newsletter with more competitions

### Closing date - 31<sup>ST</sup> AUGUST 2022

Send your entries to: **IW Beacon Competition, 8-10 Dodnor Park, Newport, Isle of Wight, PO30 5XE**  
When sending your entry to us you **MUST** ensure that you use the correct postage. Terms and conditions available on request.  
Prizes must be claimed within 30 days of the draw date. Previous winners can be found on our Facebook and Twitter pages.  
Winners will be contacted by phone.

**PRIZE PREFERENCE  
(CHOOSE ONE ONLY):**  
1 ☐ 2 ☐ 3 ☐ 4 ☐

### Did you know...

You can take a photo on your phone and email your entry to **win@iwbeacon.com**.





**FULLY  
ELECTRIC**

# SNOWS ISLE OF WIGHT RENTAL

**Your key to door-to-door  
service and great value.**

A range of fully-electric vehicles are now available across a selection of brands with the Snows Isle of Wight Rental Service. Book for 24 hours, a weekend, weekly, and even monthly periods, all at extremely competitive prices.

**Scan the QR code  
or call for further information**



[SNOWS.CO.UK/IOW](https://snows.co.uk/iow)  
[iowrental@snows.co.uk](mailto:iowrental@snows.co.uk)



FOREST ROAD,  
NEWPORT, PO30 5QJ  
t: 01983 214 664