

EAST AND
SOUTH WIGHT

Pick up your FREE copy

Beacon

August 2022

HISTORY
POSTCARD
MUSEUM

ISLAND STORY
ISLAND HAS
TALENT

WALK
ALONG THE
RIVER YAR

RECIPE
SEARED TUNA

ISLAND VIBES

Fuss-Free 30 Day Contracts

Pay what you see, leave
at any time*

*Fibred areas only.
Visit www.wightfibre.com/fussfree for more information



- Unbeatable Value
- Unbeatable Price
- Speed Guarantee
- WiFi Guarantee



wightfibre
because we care

Order online at wightfibre.com
or call 01983 240240

A Different Kind of Broadband Full-fibre • Ultrafast • Future-proof

Summer INSPIRATIONS

Delivering affordable luxury and
over 40 years experience



www.joedan.co.uk

Visit your local Design Centre.

Open Mon - Fri 9am - 5pm • Saturday by appointment only.

5 Daish Way • Isle of Wight • PO30 5XB

t: 01983 632106

BOURNEMOUTH | ISLE OF WIGHT | ORPINGTON | TEWKESBURY | WINCHESTER

lusso
ALUMINIUM



JOEDAN
WINDOWS & DOORS



Welcome from the EDITOR

We hope you're having a lovely summer so far. What a scorcher it's been!

I have been lucky enough to enjoy a few beach days already — and when I'm there, I feel like I could be anywhere in the world. The Isle of Wight is breath-taking at this time of year.

If you haven't had a chance to watch any of the Island Has Talent heats down on Ryde Beach, then there's still time. Head to page 16 to find out more.

If you fancy a stroll, why not try this month's walk along The River Yar. Or if need a little shade, you could head inside the Royal Victoria Arcade and explore the little gem that is the Saucy Seaside Postcard Museum. More details on page 11.

If you're staying home to avoid the heat, we've brought you tips on how to bring your garden back to life after a scorching summer — as well as a tasty tuna recipe for all you seafood lovers.

Enjoy the rest of your summer.

Amy Shephard

Editor amy.shephard@iwbeacon.com

Photograph by Robin Crossley



- 5** Recipe: Seared Tuna
- 7** The Entertainment Guide
- 9** Walking the Island: Along The River Yar
- 11** History: Saucy Seaside Postcards
- 16-17** The Island Has Talent
- 18-23** News from Your Area
- 29** Gardening: Revive Your Garden After Summer
- 31** Spot the Difference Competition



Beacon

MAGAZINE

IW Beacon Media Centre, 8-10 Dodnor Park, Newport, PO30 5XE

CALL US
01983 433112

FACEBOOK
iwbeacon

TWITTER
@iwbeaconmag

VISIT US
iwbeacon.com

INSTAGRAM
@beaconiow



EMAIL
hello@iwbeacon.com

totalsensemedia



DOMESTIC ELECTRICAL SERVICES

D.E.S.

**The Islands White Goods
Repair Specialists**

**DON'T
REPLACE,
REPAIR!**

**SAVE TIME AND MONEY
CALL D.E.S TODAY ON 01983 282939**

The Beach Bar

At The Shanklin Beach Hotel,
35 The Esplanade, Shanklin PO37 6BJ

Summer Craft Market

**Every Thursday
Throughout August**

12.00 til 4.00pm

4th, 11th, 18th & 25th

11th- Shanklin Regatta
10am- 4.00pm

Interested in having a stall?
Email: shanklincraftmarket@outlook.com

Bakes & Beers!

Freshly baked handmade cakes go perfectly with a cold bottle of Goddards Real Ale. Gift Boxes start from just £9.20.



Chat With Us: 01983 566868 Shop Online: www.gracesbakery.uk

MEDITERRANEAN CUISINE



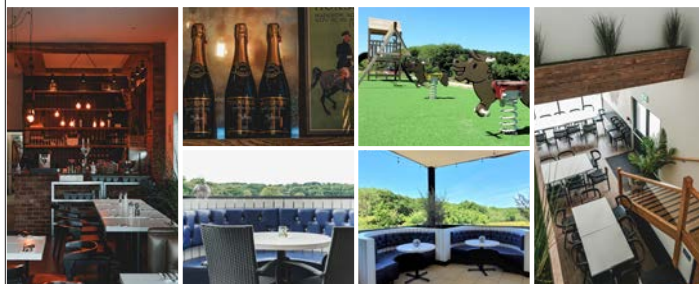
Now Open



A Family-Friendly Dining Destination

GG's offer a varied menu, which blends traditional English and mediterranean cuisine. We are a family-friendly restaurant that welcomes little ones with a huge smile.

GG's provides a varied menu of freshly prepared dishes with the finest ingredients that will tempt all palates. We offer a fantastic choice of pizzas baked in our huge authentic pizza oven.



Staplers Rd, Newport, Isle of Wight PO30 2NB

Mon - Fri: 11am - 9pm / Sat - Sun: 11am - 10pm

E: info@ggsiow.com T: 01983 219999 www.ggsiow.com



wildheart
animal sanctuary
isle of wight

Together we roar, together we can make a difference!

Twilight Safaris

Every Wednesday throughout August, starting on Wednesday 27th July.

Early Bird Breakfasts

Every Weds - Sunday throughout August including 4th September

Roaring 40s

10th and 11th of September

To book your place go to wildheartanimalsanctuary.org

Visit us: Yaverland Rd
Yaverland, Sandown, PO36 8QB





Seared Tuna

On a bed of spicy red onions, with a chilli ponzu sauce and fried garlic

INGREDIENTS

For the tuna

800g tuna loin
500ml ponzu sauce
100g chilli daikon
80g spring onions – thinly sliced
20g deep fried garlic

For the chilli braised red onions

5 red onions
100ml soy sauce
100ml rice vinegar
100ml sake
60g caster sugar
12g ginger – finely chopped
2 garlic cloves – thinly chopped
1½ dried red chillies – large (seeds removed)

METHOD

1 Cut the tuna into blocks, season and sear in a very hot pan with a little oil until coloured. The tuna should be raw apart from the outside 2-3mm. Place on a lined tray and refrigerate.

For the onions, sweat off the finely chopped garlic, ginger and dried chillies for a few moments, then add the sliced red onions and cook till semi-transparent.

2 Add the soy, sake, rice vinegar and sugar and bring to the boil, remove from the heat and strain, then allow to cool on trays. The onions should still be al dente, spicy and a little sweet.

3 Thinly slice the spring onions. Fry off the sliced garlic till crisp and golden brown and grate the chilli daikon.

4 Place a pile of the spicy onions in the centre of a salad bowl, cut the tuna into slices and roll up, then place six rolled-up slices of tuna on the onions in a pyramid shape.

Add a little chilli daikon to some of the ponzu sauce and pour over the tuna, garnish with the fried garlic and sliced spring onions. Finally, finish with a small pile of extra chilli daikon. **B**



SERVES

4

The Entertainment GUIDE

Visit iwbeacon.com to see our full events guide

JACK UP SUMMER PARTY



SAT 13 & SUN 14 AUGUST
RETRO STAYCATIONS, RYDE

BOUTIQUE MINI-FEST

Tom Jones <small>A tribute by Simon Howard</small>	GEORGE MICHAEL <small>Rob Lamberti George Michael Relived</small>	SIMPLY RED <small>A tribute by Red Mick</small>	Meat Loaf <small>Real Dead Ringer The Meat Loaf Show</small>
SKA'D FOR LIFE	JERSEY BOYS <small>A tribute by Jersey Guys</small>	Go West SPANDAUR BALLE DURANDURAN <small>A tribute by Go Span Duran</small>	MADONNA <small>A tribute by MDNA</small>

Crowdeoke

**13TH & 14TH
AUGUST
RETRO
STAYCATIONS,
RYDE**

This year's summer offering will be a family-friendly celebration of popular music from the 60s, 70s, 80s and 90s featuring a variety of internationally renowned tribute acts and original bands to help bring back the good times. Rob Lamberti will be reliving the musical talent of George Michael in a not-to-be-missed performance. The weekend will also feature tributes to the legendary Tom Jones, Simply Red, Go West, Spandau Ballet, Duran Duran, Madonna, Jersey Boys (Frankie Valli and The Four Seasons) as well as Real Dead Ringer – The Meat Loaf Show.

Ska'd For Life will be performing a special extended set and there will be a two-part show from Crowdeoke; a huge sing-along extravaganza. There'll be a range of local traders and festival stalls with locally sourced, freshly prepared food including BBQ direct from Hazelgrove Farm where this year's mini-fest is taking place.

**13th & 14th August
Retro Staycations, Ryde**
Tickets £52.50 weekend / £30 day.
Teens (13-17) half price. Kids go free. All tickets include posh loos!
jackupevents.co.uk



THE AWAKENING FESTIVAL OF WELLBEING



Don your own oxygen mask and embrace a weekend just for you. You can choose from over 50 sessions over the weekend.

**24TH & 25TH SEPT
NORTHWOOD
HOUSE,
COWES**

On Saturday explore inspiring workshops & talks, yoga & movement, meditation & mindfulness, holistic therapies, a wellbeing marketplace and the Feel Good Glitter Party in the evening. On Sunday enjoy the slower pace of life with restorative yoga, breath and sound healing sessions. Join for the Saturday, or for the full weekend — the choice is yours. www.awakeningfestival.co.uk

ISLE OF WIGHT MODEL ENGINEERING SOCIETY

Ever considered Model Engineering as a hobby? Well, now's your chance to find out what it's all about!

The only Model Engineering Society on the Isle of Wight, invites you to a special event at the society's home in Cowes.

You're welcome to go along and chat to members, and find out what they do. Perhaps you've a certain skill that you can offer to help with? Maintenance days are held every Wednesday. There's always lots to do! From painting to gardening, from welding to machining, there's something for every one.

Always wanted to drive a miniature train? Now's your chance!

Perhaps your interest lies more with Model Boats or Garden Railways? Why not have a chat with one of the Boating

or Garden Rail members. The society is fortunate enough to have a sizable model boat

pond and two garden rail circuits! All need constant maintenance, can you help?

Open Weekend 3rd & 4th September

- Exhibition stands - workshop tours
- Boating & garden railway demonstrations!

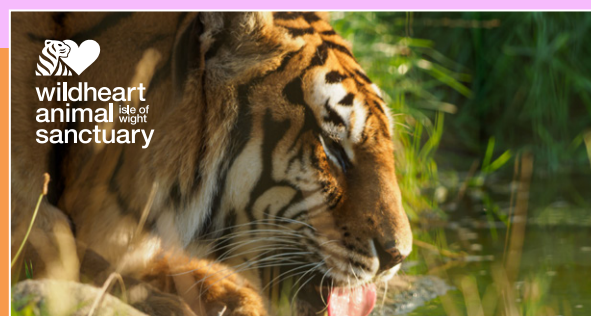
- **FREE train rides!!!**

Entry is free, but donations gratefully accepted. (Cash only) Teas, coffee, cakes & ice cream available at extremely reasonable prices!

Location: Behind Northwood Cricket Club, Northwood Recreation Ground, Park Road, Cowes. PO31 7NN. Email honsec@iwmes.org.uk



**SPECIAL OPEN
WEEKEND
SAT 3RD & SUN 4TH
SEPTEMBER.
GATES OPEN
1PM - 4PM**



**wildheart
animal
sanctuary**

SUMMER AT THE WILDHEART ANIMAL SANCTUARY

Twilight Safaris: Every Wednesday throughout August.
Early Bird Breakfasts: Every Wednesday-Sunday throughout August including 4th September.
Roaring 40s: 10th and 11th of September.

To book your place go to wildheartanimalsanctuary.org
Visit: Yaverland Rd, Yaverland, Sandown, PO36 8QB

MAGIC IN THE SKIES



Visit The Needles every Thursday between 4th August & 1st September for a host of family entertainment, live music, and iconic firework displays. Derek Sandy, Randini, Stevo & Kai, Groove Union and many others. Open from 10am until late.



COWES WEEK

29th Jul - 7th Aug 2022



THE PLACE TO BE!

NORTHWOOD HOUSE: ALWAYS THE PLACE TO BE IN COWES WEEK

Now more popular than ever with visitors, Northwood House will again be at the social centre of Cowes Week between 29th July and 7th August.

The venue's Lawn Bar, with its relaxed Mediterranean vibe and huge outdoor seating area is open daily from 12pm until late, offering a range of premium drinks and food. Artisan pizza specialists "So Much Dough" will be in situ all week and are joined by the Captains Grill who'll be serving up a premium burger menu for those in search of a tasty treat.

There will be live music from the Lawn Bar's Garden Stage every night between 8pm and 10.30pm...but get there early to find a table! And don't miss the Cowes Week 'Disco Alfresco' Parties between 10.30pm and 12.30am on the 3rd, 4th and 5th August...the best place to be if you want to disco the night away, hosted by popular local DJs! Admission fees apply at certain times and evenings, so check the venue website/social media for details.

You can also check out the new and

COWES WEEK LAWN BAR MUSIC		
FRI 29th JUL	SAT 30th JUL	SUN 31st JUL
Ruby & the Diamonds	The Wilde Flowers	Jimmy's Big Fish
MON 1st AUG	TUE 2nd AUG	WED 3rd AUG
The Bohemians	Special Brew	Level 7
THU 4th AUG	FRI 5th AUG	SAT 6th AUG
The Dance Preachers	Mr Mojo	DJ Omar & Friends: "Ibiza Anthems Party"
COWES WEEK DISCO ALFRESCO WED 3rd, THU 4th & FRI 5th AUG From the Mahou Garden Stage 10.30pm-12.30am Weds: Our Girl G • Thurs: DJ Omar • Fri: DJ Jakey Chan <i>Playing classic disco and house, crowd-pleasing dance, 80's and 90's belters</i>		

exclusive Mermaid Garden, a premium all-weather bar area with beautiful yurts brought to you in conjunction with Mermaid Isle of Wight Gin.

Visitors can enjoy a quintessential afternoon tea at the Northwood House Tea Garden, another popular retreat during the week. It's open daily from 11am to 5pm, serving home-made

cakes, cream teas, sandwiches, drinks and ice cream...a very relaxing experience indeed!

On 2nd & 3rd August there are several delightful outdoor theatre performances for families of "The Tales of Peter Rabbit" brought to you by London's Quantum Outdoor Theatre, with tickets available online and on the gate each day.

Official event grass parking is available daily from 8.30am during the week at Northwood Park, which is signposted off Ward Avenue.

For all the information head to www.northwoodhouse.org/ events

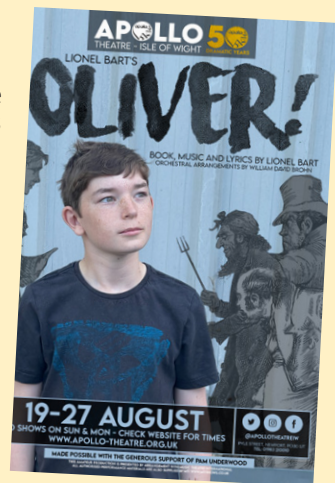
SUMMER AT THE APOLLO



'Little Shop of Horrors' - Visiting company The Mitre Players return with their latest production from 2nd - 6th August. Tickets £14. 'Oliver' - Lionel Bart's iconic musical,

sponsored by Pam Underwood, from 19th - 27th August. Tickets £10. Students/unemployed £5

Book these unmissable shows through www.apollo-theatre.org.uk or call 01983 210010 and leave a message.



ALL WEATHER EVENT

TAPNELL FARM PARK

EVERY THURSDAY EVENING

From 28th July

Book your tickets

tapnellfarm.com/events

THE ISLAND'S BIGGEST KIDS PARTY

Every Thursday evening, from 6pm-9.30pm, join the Tapnell Farm Park team for The Island's Biggest Kids' Party! They're going BIG on fun and entertainment with the renowned Bubble Wizard and his Giant Bubble Show, classic kids party games and fun prizes, magic, a disco and party dances! Food and licensed bar. All-weather event.

Tickets must be booked online in advance: www.tapnellfarm.com/events

The Chale Show

The Chale Show has a fantastic mix of entertainment and attractions. From motorbike stunt shows and dog agility relay displays in the main arena to live bands on the Sunflower Music Stage. You'll also find the Isle of Wight's largest Horticultural Marquee, with over 1,500

entries showcasing an astounding array of produce, craft, floral and culinary talent. Other show highlights



include:

- craft and antiques marquees
- farmers market
- shopping opportunities
- fairground rides
- kids zone
- meet and greet children character
- vintage and steam vehicles
- charity stalls and much more.

Adult and seniors - £11. Children under 16 - Free. Tickets are available on the gate and are valid for one day.

6TH-7TH AUGUST
10AM-5PM
AT CHALE RECREATION GROUND

30th Jul - 7th Aug
11am-5pm

NORTHWOOD HOUSE

Tea garden

THE PERFECT TREAT FOR COWES WEEK!
ENJOY THESE SPECIAL READER OFFERS:

BUY 3 CREAM TEAS AND GET 1 FREE!

MENU PRICE: £5.50 each (GREAT FOR GROUPS!)

VALID 29 JUL - 3 AUG 2022

MR WHIPPY FAMILY SUPER SAVER!

RRP £2.50 @

GET 3 FOR £6.50 OR 5 FOR £10

NEW Summer collection



Ladies Boutique, stocking a range of clothing, footwear, handbags and accessories.



NOW OPEN!
Open Monday-Saturday
9.30am-5.30pm
Sundays
10am-4pm

8 High Street, Cowes PO31 7RZ www.abiclothing.co.uk

Tel: 01983717676



Enjoy The Sun SAFELY THIS SUMMER

An Isle of Wight campaign, set up in memory of a young mum who died of skin cancer, is urging people to be safe in the sun this summer.

Zoe's Law uses its Facebook page to encourage followers to protect their skin with a good quality sun screen as temperatures continue to soar over the summer.

They also highlight the importance of taking just five minutes to check your moles, using the ABCDE guidance.

A – Asymmetric. B- Border.
C- Colour. D- Diameter.
E- Evolving.

Zoe's Law was founded in 2020 after 26-year-old Zoe Panayi died, despite seeking help for an 'itchy' mole on numerous occasions. Following Zoe's death, her friends and family launched Zoe's Law — a petition to ensure all moles and skin tags removed, are tested.

The petition has so far been signed by more than 32,000 people and Isle of Wight MP Bob Seely has previously said



he plans to escalate it to Parliament. You can sign the petition via a link on our website (iwbeacon.com).

An investigation was subsequently launched following Zoe's death.

The CCG would not comment on the outcome of the investigation when approached. However, it did say it has since put in place new measures.

As part of changes, GP locations on the Isle of Wight now have access to new dermatology testing technology.

The system allow GPs to use mobile Teledermoscopy to send images of moles to other health professionals across the country.

Through the platform, doctors are said to be able to diagnose and recommend treatment quicker.

Zoe's brother, Charlie, will be facing his fears and taking on a Wing Walk next month, to raised funds to allow Zoe's Law to purchase a skin scanner. Any

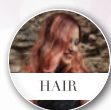
additional sponsorship will be donated to Mountbatten. To sponsor Charlie, head to www.justgiving.com/crowdfunding/charalambous-panayi



Discover the New You!

ANA
HAIR AND BEAUTY SALON

Our Services



HAIR



BEAUTY



SKIN



MAKE-UP



WAXING

- Unisex Hairdressers
- Waxing Treatments
- Make Up
- Facials
- Manicures/Pedicures
- Microblading
- Eyelash Lift
- Eyelash Tint
- Eyebrow Shape/Tint
- Spray Tanning
- Blow Dry
- Haircuts
- Colours
- High Lights/Low Lights
- Perms
- Hair Treatments
- Indian Head Massage
- Hopi Ear Candles
- Keratin Smoothing Treatment
- Weddings

Call
01983 402694
to book an
appointment today!

£5 off
any treatment*

*Terms & Conditions: £5 off any treatment with this leaflet. Cannot be used with any other offer. One leaflet per treatment. Cannot be exchanged for money.

Open Tuesday - Friday 9am - 5pm. Saturday 9am - 1pm
24 High Street, Sandown, Isle of Wight, PO36 8DE



Start on the Blackgang Road near Niton Manor Farm. Walk along the road to cross Niton High Street.

Take the path opposite and follow the trail way-markers out of the village to Allotment Road and Ashknowle Lane into Whitwell.

Cross road and take lane opposite past an old pump. Continue past the remains of a stone sheep wash and at the exit gate from the field take the path on the left back towards the village.

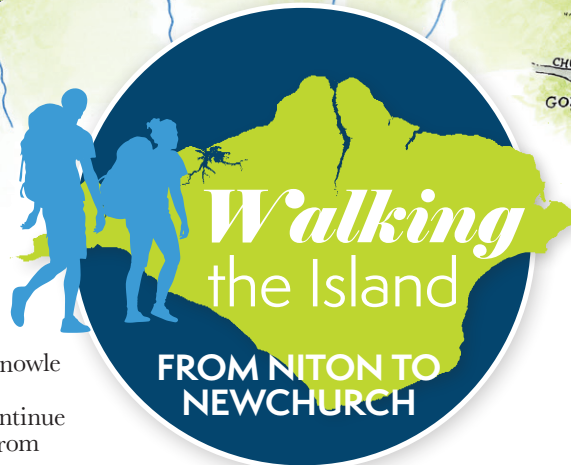
At the High Street turn right and then turn left into Bannock Road. Then turn right into Slay Lane, follow the lane to Stockbridge House. Continue along track curving right and at road turn right.

Turn left off the road alongside a garden on Footpath NT91 towards Ford Farm. At the track junction, turn left across the river then immediately turn right. Pass a water treatment works on left, then turn right and cross bridge over the river. Follow footpath way-markers through fields to road at Roud and turn left.

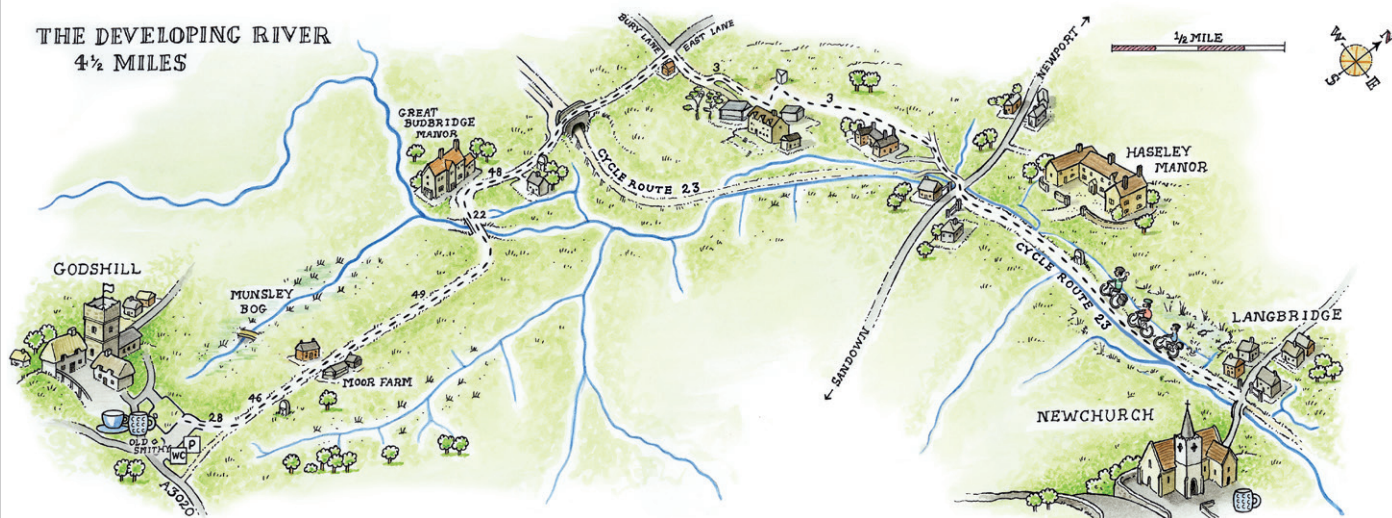
Take the footpath opposite from the car park, this leads across the field and at the track, turn left. Follow this track through Moor Farm, to cross the river and past Great Budbridge Manor to the minor road.

Follow this minor road over a cycle track to a four way junction and turn right. Now follow the footpath markers to the main road with the traffic lights for the Cycleway at Horringsford. Cross road and turn left on to the Newport to Sandown Cycle Track. You'll pass Pedallers Cafe where you could stop for refreshments.

Continue to the edge of this section at Langbridge, where you can turn right steeply uphill to the Public House at Newchurch ③



THE DEVELOPING RIVER 4 1/2 MILES



Distance: 9.5 miles Walk Time: 3-4 hours

Courtesy of

ISLAND RIVERS
All about rivers on the Isle of Wight

www.islandrivers.org.uk

ST HELENS SERVICE STATION

ALL MAKES SERVICE & DIAGNOSTICS

Factory level diagnostics & services for BMW, Volvo, Peugeot, Citroen and Renault

Genuine parts supplied for Jaguar, Land Rover and Porsche



VOLKSWAGEN • PEUGEOT • RENAULT • CITROEN • BMW • MERCEDES



MOTs AVAILABLE FOR ALL
MAKES & MODELS

Embankment Road, Bembridge PO35 5NS. Tel. 01983 872332 or 07920 224181



Cherry Tree
shutters
Changing your view

**20%
SALE
NOW
ON!**

01983 640174
www.cherrytreeshutters.co.uk

Providing interior plantation shutters to cover any window style or colour including; Square, Rectangle, Circular, Arched, Bays and Patio Doors.



*Terms & Conditions Apply

Checkatrade.com

**0%
FINANCE
AVAILABLE**



Do You Want Sauce With That?

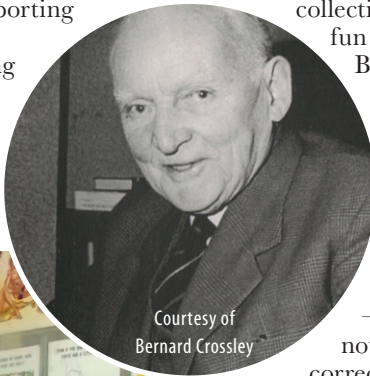
If you head to the Royal Victoria Arcade on Union Street this summer, you'll discover a quaint little museum which pays homage to Donald McGill — the king of the saucy seaside postcard.

From the 1890s to recent times, the seaside postcard was a favourite way to send messages to family and friends — now mainly bypassed by texts and emails.

In a 58-year career, Donald McGill drew more

than 12,000 designs. These ranged from supporting the suffragette movement, raising the country's morale against Kaiser Bill and Hitler in the two

World Wars, and a whole collection of poking fun at the British on their seaside holidays. A lot of the humour is typical of the music hall comedians — definitely not politically correct!



Courtesy of Bernard Crossley

if the cards were obscene. In 1953, following a complaint in the Isle of Wight Times, five shops in Ryde were raided and over 5,000 cards seized. Following a trial, nearly 3,000 of them were destroyed.

Those 'obscene' cards have been reprinted, and, along with many others, can now be purchased from the Donald McGill Saucy Seaside Postcard Museum, part of the Museum of Ryde, underground in the Royal Victoria Arcade, Union Street, Ryde.

Run by volunteers, the Museum of Ryde is open from 11am to 4pm, Tuesday, Thursday, Friday and Saturday. Entrance for adults is £4, with under-16s free. ☺

In a 58-year career, Donald McGill drew more than 12,000 designs

Complaints about the vulgarity of some cards had started in the early 1900s (not just McGill — there were many other artists), and by the end of the second World War local censorship committees had been formed in many seaside towns around the country. Each committee had its own benchmarks for obscenity — cards banned in one town could be bought in the next.

On the Island, it was left to Ryde magistrates to decide



**25% OFF
ENTRY WITH
THIS VOUCHER**
Valid until August 31st



Enjoy your conservatory all year round



**2 FREE
PANELS**

*Quote Ref
BEACON0622



• **WARMER IN WINTER** • **COOLER IN SUMMER**

*"It's the best home improvement we
have ever made. Our conservatory is
now our dining room in the garden."*

Mike Millis, Middleton On Sea

Our lightweight insulated panels make
your conservatory:

- **Warmer** in winter • **Cooler** in summer • **Reduce** bills
- **Quieter** in bad weather • Installed in less than a day

To find out more about the benefits that the Green
Space system can offer and see if your conservatory is
suitable for any potential subsidies, contact us now.



0800 08 03 202
www.greenspaceconservatories.co.uk

GRAND
DESIGNS LIVE

ideal
HOME SHOW

8K⁺ HAPPY
CLIENTS



Terms and Conditions apply.
Green Space UK, Unit 8 BH24 1PD, Registered
No. 8542786, as shown on FCA authorisation,
trading as Green Space UK, is a credit broker
and is authorised and regulated by the Financial
Conduct Authority. Applies to orders of 8 panels
or more. Not to be used in conjunction with any
other marketing offer

GREEN MEADOWS, COLWELL ROAD

Shared Ownership Apartments



Green Meadows is a new development in Freshwater for those aged 55 and over. Benefitting from surrounding countryside and less than half a mile from the sea, these apartments are perfect for those wanting to live independently with the peace of mind that support is there for you as and when required via a 24-hour wellbeing team who are there to support residents on an unplanned basis via use of pull cords located within the apartment, meaning independent living can be maintained. Apartments can be purchased between a 25-75% share.

MAIN BUILDING FACILITIES

A welcoming community atmosphere is at the heart of the Green Meadows Development and is the focus of many of the facilities providing supported, settled and safe living for all residents.

The ground floor of the building is where many of the facilities are located including an activities room, communal

lounge, dining room and tea & coffee making facilities. There is also a communal washing & drying room, mobility scooter store with charging points, activities & lunch club, hairdressers and a shop run by residents. Also, a minibus takes residents to different locations each week. Available apartments are situated on the first, second and third floor with lift access to all floors as well as stairs.

Assisted bathrooms are available if needed. These are situated throughout the building. There are also guest suites if visitors wish to stay overnight and prefer to have their own suite rather than staying in an apartment, these can be reserved at a small cost.

The building and all apartments are wheelchair accessible and the wellbeing team are registered with the Care Quality Commission and the service is delivered to meet all regulatory requirements with all staff trained to a high standard and hold the necessary background checks.

RECEPTION

Located as you enter the

building is a small seating area with communal hot drink facilities, communal disabled WCs, scheme shop, hairdressers and mobility scooter storage. The reception desk supports residents and visitors when required.

TWO-BEDROOM APARTMENTS ENTRANCE HALL

Upon entering the apartments there is a spacious entrance hall with storage and access to the bathroom, both bedrooms and to the kitchen/lounge.

KITCHEN/LOUNGE

25'4" x 11'1" (7.7m x 3.4m) Benefitting from spaces to fit a fridge/freezer and a washing machine or dishwasher (the communal clothes washing facilities are available to all residents) there is also an eye-level oven, ceramic hob and a stainless-steel sink located in the kitchen.

SHOWER ROOM

9'6" x 7'3" (2.9m x 2.2m) This wet room is a 'Jack and Jill' style room, meaning access is gained from the hallway as well as main bedroom.

A pull cord is situated next to the WC, there is a touch light mirrored cabinet over basin and a heated towel rail.

MAIN BEDROOM

17'9" x 9'6" (5.4m x 2.9m) A spacious double room with shower room access and plenty of room for drawers and/or a wardrobe.

BEDROOM 2

12'9" x 7'10" (3.9m x 2.4m) Perfect size for a small double or single bed leaving plenty of space for clothes storage or a hobby room if preferred.

OUTSIDE

A large car park for residents and visitors with disabled bays is located at the front of the building. Communal areas with outdoor seating facilities accessible through double doors from the communal dining area or through gated side access. ③

Tel: 01983 538080

Email: newhomes@hrdiw.co.uk

www.hose-rhodes-dickson.co.uk

*Please note measurements are approximate & should not be relied upon. Different measurements apply for apartments 60 & 77.

**Rent, Service & Wellbeing Charges apply.

£10.00
OFF YOUR NEXT MOT



WESTRIDGE GARAGE

01983 562717 / 562160

westridgegarage.co.uk

Brading Road, Ryde, Isle of Wight, PO33 1AY

This voucher cannot be used in conjunction with any other reduced price MOT offer. (rrp £54.85). Exp 31st AUGUST 2022



20% OFF EVERYTHING!

You've supported us now let us support you!



Care In The Garden, The Plant Market,
Palmers Brook Nursery, Ryde, PO33 4NS
www.careinthegarden.com

Tel: 07722 868939



THE ISLAND'S FAVOURITE...

isle of wight radio



SCAN the QR
code for a list
of the wrong
answers

W	H	A	T'	S
#	T	H	E	*
W	O	R	D	?

Work out the 'Wright' word and you
could win BIG. Text 60777 to play!

Sponsored by

wright
estate agency
wright-iw.co.uk

SOLD
subject to contract

THE SIGN YOU WANT - THE SERVICE YOU NEED

LEAVING SCHOOL AND LOOKING FOR A CAREER?

Talk to HTP in Newport now for independent, expert advice. We've got real jobs with Apprenticeships and Traineeships, or full-time on-campus courses.

● **Our one-year courses will teach you new skills**

Start your career by gaining new skills and qualifications. With our industry-experienced tutors and smaller class sizes, we're the Island's friendliest college. We have a wide range of one-year courses starting in September at our Riverbank Campus in Newport. If you need to, you can study Maths & English too.

● **Or start work now with a workplace Apprenticeship**

At HTP we work with great employers on the Island and across the South. We have a track record of placing young people in real jobs, with high levels of success. Talk to us today and we can build a training programme that gets you started in the world of work – with real wages and no tuition fees.

SOMETHING FOR EVERYONE

Our wide range of Apprenticeships and Full-time Courses includes:

- Health & Social Care
- Hospitality & Tourism
- Sport & Fitness Instructing
- Outdoor Pursuits
- Marketing & Digital
- Professional Cookery
- Business Administration
- Childcare & Education
- Horse Care & Riding
- Nail Technology + more!

GET
INDEPENDENT
CAREERS
ADVICE
FROM HTP

Don't wait till September – sort your career today with HTP Apprenticeship College

Visit http.ac.uk • or call 01983 533926



THE ISLAND HAS TALENT 2022

Islanders are being invited to showcase their talents for a special competition on Ryde Seafront.



Photographs by Robin Crossley



Applications are still open at
theislandhastalent.com

The Island Has Talent is calling on people who can dance, sing, play an instrument, perform magic, or even stand-up comedy.

Musician and star of Britain's Got Talent in 2019, Derek Sandy, is inviting people to get involved, with a prize of £1,000 up for grabs.

If selected, you will be asked to perform before the official judging panel and a live audience at Ryde Harbour this summer.

The Island has Talent was started by Derek Sandy in partnership with Beach House Café in Ryde. Taking place over four free shows on the Western Gardens by Ryde's sprawling sandy beaches.

Heats one and two already got underway last month, with more exciting heats and the final due to take place on Ryde Seafront this month.

Island Has Talent 2022 promises to show off the best talent the south has to offer.

Popular Isle of Wight performer, Derek Sandy, who is the face of The Island Has Talent, said:

"There's a lot of talent on the Island, young and old, but they don't always get the chance to go to the mainland. It's expensive and they may not know what to do. This is where I got the idea.

"The judges select three contestants that they think deserve to go through to the final and the audience get the chance to vote for a crazy card, through Instagram.

"You can expect to have a good laugh. Some emotional. It's a mixture. It's raw talent. It's natural and it's raw.

"There's loads of food, loads of drinks, ice creams, slushies.

"It's been loads of fun so far and there's some really great acts coming up."

Everyone is welcome to come down to Ryde Seafront and watch on the following dates:

Heat 3: 6th August at 12pm

Final: 22nd August at 12pm

HERE'S SOME OF THE FANTASTIC ACTS WHO THE ISLAND HAS TALENT HAS ALREADY SEEN:



MATTHEW BUSBRIDGE

A theatrical singer from Ventnor.
"This is one of the biggest events that I'm going to be taking part in. I feel like I like to show people what I can do and the voice I've got."



HARRY LEE

Plays piano, piano-accordion, trumpet, saxophone.
"My friends would be surprised seeing me on a bigger stage than the school assembly."



ANNELISE FROM NEWPORT

"Someone said to me, you should do this. This would give you the next step up in music. And I was like wow, this is a big thing. I want to have a career in music, whether that be on stage or making music on my own."



RYDE ACADEMY ELITE TEAM

Ryde Academy Elite Team did not fail to impress at the live auditions — with a choreographed dance delivered with precision timing.



THE ISLAND HAS TALENT 2022 – REGISTER NOW!

We are looking for singers, dancers, comedians, jugglers and more! Show us your talent!
Register now for the last Heat on 6th August. Grand Final on 22nd August.

Hosted by
Derek Sandy



THE WINNER WILL RECEIVE A £1,000 CASH PRIZE.

Free to attend and watch with all the family on Ryde Seafront.

FANTASTIC
COMPETITION



WIN A PARADISE HOLIDAY TO BARBADOS & PS5!

Enter our competition and you could win an all expenses paid holiday for two in Barbados and a Playstation 5.

Scan the QR code to enter



SCAN ME





NEWS FROM

RYDE NORTH WEST

by Cllr Phil Jordan

Really disappointing news about the temporary toilets on Eastern Gardens. Since they were installed and during the first three weeks, they were vandalised badly three times. The extensive damage was difficult to repair easily and has cost significant amounts of money to get them open again. I do hope this does not become a losing battle with a small anti-social behaviour group who seem to want to make our town and community a worse place rather than a better place. I know that the provision of the toilets is being reviewed regularly as fighting a costly and losing battle serves no-one at all. Let us hope that awareness and vigilance from the community might help us through this sad situation. It has been great to see the events taking place on Eastern Gardens recently. Either provided by others or directly from Ryde Town Council the area has come alive with the free events being put on including the 'Island Has Talent' competition running through August. It is great to see so many people come forward to perform for crowds that settle on to the Gardens and for

free, a fantastic addition to the Ryde offer. Good luck to all who participate, and I understand that the eventual winner will be receiving £1,000. Not bad at all. Work continues moving the beach sand back along from the Marina area – where it causes much disruption – to the Appley area, replenishing lost sand there and in time for the upcoming sports events planned to include the beach soccer. Finally, I had the tiring pleasure of walking from the pier end to the Dell café and back to agree the potential route for the Dotto Train. Ryde Town Council are moving forward with plans to re-introduce a Dotto Train in Ryde and working on many of the administrative tasks needed to get one into operation. The council are currently and actively sourcing a Dotto Train for this much wished for attraction. I have never wavered in my efforts on this and so pleased we are getting close to the day that Ryde can once again boast a Dotto Train running along our seafloor.

✉ phil.jordan@iow.gov.uk

Drones Deliver Chemotherapy Drugs in Half an Hour in NHS Trial

By Samuel Osborne - Sky News

The NHS is trialling the use of drones to deliver life-saving chemotherapy drugs to the Isle of Wight - within half an hour.

Doctors believe the pilot scheme, which will ferry the drugs from a hospital in Portsmouth to the Island, could be the first step towards "same-day delivery" for the health service.

It is hoped that drones will enable doctors to order drugs and medical equipment from anywhere in the country for delivery that day.

In the trial, chemotherapy drugs will be delivered from a pharmacy at Portsmouth Hospitals University NHS Trust to St Mary's Hospital on the Isle of Wight.

The drone will cut delivery times from four hours to 30 minutes, as one flight will replace two car journeys and one hovercraft or ferry journey per delivery.

NHS England officials said chemotherapy is difficult to transport as some doses have a short shelf life.

The new method,



launched in partnership with tech company Apian, will save time and money and offer a better option for cancer patients living on the Island, many of whom have to travel to the mainland for treatment, officials added.

After the Isle of Wight the drone programme will be trialled in Northumbria.

Amanda Pritchard, Chief Executive of NHS England, said:

"Delivering chemo by drone is another extraordinary development for cancer patients and shows how the NHS will stop at nothing to ensure people get the treatment they need as promptly as possible - while also cutting costs and carbon emissions".

Sandown Athletics Track Renamed in Memory of Ray Scovell

By Jamie White

The Fairway Athletics Track in Sandown has been officially renamed in memory of the Isle of Wight's 'Mr Athletics'.

The facility now proudly sports the name 'The Ray Scovell Athletics Centre', after the legendary Island coach, who passed away last year (2021).

He coached a number of Island sporting stars, including hammer throwers Andy Frost and Paul Farley. He also coached Stephen Duff, who won gold and silver medals at the World Fire and Police Games in the US.

Ray said that he always wanted to get more children active in athletics and cross-country.



He also picked up Isle of Wight Radio's Volunteer of the Year award in 2014.

The grandstand at the site has been named after Ray's wife, Rosemary, who also sadly died last year.

A naming ceremony was hosted last month by their daughter, Claire Apsey and her son, Simon.

At the ceremony, Claire said: "Over the years, the track became dad's second home. Those close to him have extra special memories...every step of the way, mum was the wind beneath his wings, whether it be supporting his latest fun-filled idea or scheme, to spending hours washing kit and making medals."

*"We don't just sell hearing aids,
we provide total hearing care"*

Wight Sound Hearing

Registered Healthcare Professional
Colin Stockdale RHAD MSHAA AIHHP (Executive Member)

12 High Street, Shanklin PO37 6LB
Tel 01983 86 59 59

All Hearing Tests and Consultations are FREE

Latest Digital Testing & Fitting Equipment

Video Otoscope (see inside your own ear)

Try Before You Buy OR RENT a Digital
Hearing Aid (from £1 A DAY)

Free
Home Visits

EVERY Brand of Hearing Aid
Available in the UK

Easy Payment Plans

Busy Ryde Road Turns One-Way for Ten Weeks

By Oliver Dyer

A busy road in Ryde has turned one-way for ten weeks while work is carried out to fix a 'dangerous' wall.

Island Roads are attempting to strengthen a section of wall on Queen's Road, Ryde.

The work, along a 40-metre section of the retaining wall, will see the road will be made one-way (heading into the town).

Traffic leaving Ryde will have to do so via Argyll Street for the duration of the project.

Urgent work is needed following the collapse of a section of wall that threatens the highway.

Without repair and strengthening, Island Roads says



there is a danger the footway and eventually the carriageway would be undermined.

Residents will be able to access their homes with pedestrian access maintained at all times.

The section of wall to be strengthened is in Queen's Road between its junctions with Binstead Road and Westwood Road.

Barclays Building To Be Restored To Original Condition If Plans Approved

By Louise Hill LDR

A well-known Ryde building is to be decommissioned as its occupier – a banking giant – prepares to move out.

Plans have been submitted, by Barclays Bank, to restore the building housing its Ryde branch to its original condition, after it closes on August 4.

In May, Barclays revealed 78 people were exclusively using the branch for banking and 84 per cent of customers chose alternative banking methods.

The number of transactions completed over the counter have also been falling.

If plans submitted to the Isle of Wight Council are passed, the building would be stripped and

decommissioned, but existing original features would be left.

The blue writing on the front would be taken down, the ATM machine would be removed and all counters and furniture taken out.

The building's brickwork would be in-filled to match the existing stonework and a section of windows would be repaired.

Internally, work would be carried out in the public spaces in the banking hall.

The documents say the work is intended to involve minimum intervention and to be reversible in the future, 'allowing the building to evolve and maintain the possibility of new uses or layouts'.

View the plans, 22/0123/FUL, on the council's planning register.



NEWS FROM

RYDE MONKTONMEAD

by Cllr Karen Lucioni

Ryde Monktonmead Matters

How wonderful it is for me to be able to talk with you again, since we last spoke I am honoured to have been made a cabinet member for the Isle of Wight Council. My responsibility is community safety, regulatory services and waste.

One issue I am trying to address with the PCC is to have Ryde Police Station open again, I know this is a huge issue for most of you and I will carry on with this mission. We also have extra CCTV for Ryde now that are moveable if it is shown there is other areas that have the need (this has to be backed up with data) so I will be keeping an eye on this closely.



With the warm weather here please can we all be very careful with disposable BBQs if you are using them out and about please make sure they are cold when you throw them away, many fires are started this way, so don't ruin a good day out by ending it with a fire.

Another issue I am really concerned about it becoming as landfill free as possible so as a dog owner I was very interested to find out that if you use dog bins that will end up in landfill, this is because of the amount of moisture it contains, if you just find a normal bin or take it home to your own general rubbish it will be incinerated. I always take mine home now and ask those who may not be aware of this to maybe try and do the same.

I also really need residents to report antisocial behaviour so the police and other stakeholders can get a proper picture of it. You don't have to hang on to 101 for hours as the website is a great tool to use and gets sent to local police. This helps with funding for various things from policing, CCTV and obtaining grants to help tackle crime and anti-social behaviour. Please help by logging on to www.hampshire.police.uk/ro/report/asb/asb/report-antisocial-behaviour.

Here is a list of roads included in Ryde Monktonmead so if you are included please feel free to contact me anytime as I am your elected IW Councillor and Ryde Town Councillor.

Bailey Close, Bellevue Road, Bennett Street, Cornwall Street, Daniel Street, Dover Street, East Street, Gobles Close, High Street, Jubilee Place, Lower Wood Street, Marymead Close, Melville Street, Monkton Street, Park Close, Park Road, Player Street, Riboleau Street, Simeon Street, St. Johns Road, St. Marys Passage, Star Street, Temperance Place, The Strand, Trinity Street, Warwick Place, Warwick Street, Winton Street, Wood Street, Abingdon Road, Albert Street, Alfred Street, Bank Passage, Daniel Street, Edward Street, High Street, Longmead Road, Millward Place, Millward Road, Prince Street, Quarry Road, Sandcroft Avenue, South Street, South View, Close St. Johns Road, Stainers Close, Station Close, Surrey Street, Swanmore Road, Weeks Road, Well Street.

☎ 07506 930109 📧 karen.iow@icloud.com



The Isle of Wight's local TV experts
Call 404406 studiophase.com

Why choose us?

- CAI approved
- Friendly, reliable engineers
- We have over 30 years of local knowledge



NEWS FROM

RYDE

by Cllr Charles Chapman

Ryde Town Council has appointed a project manager for the St. Thomas's Church renovations. Tim Wander has 25 years experience and very importantly, led the successful restoration of the Grade II listed Northwood House, in Cowes. Ryde Pier with its trainline which brings so many tourist and day visitors could be closed. We are aware that it the track is coming to the end of its 'life' and needs renewal and refurbishment. But it's like a number of projects, often put on hold to extend renewal issues, in some cases, although not this one, so that the work becomes 'uneconomic' and we lose another part of our heritage. You can view plans for the pier work by visiting www.gov.uk/check-marine-licence-register. Registering your interest is important to ensure that this work is approved, funded and carried out. Islands Roads have restored, back to new, the 'welcome to Ryde Sign'. It's looked a sorry sight for many years and it now is a pleasure to view. Our thanks to those concerned in this programme. I have had numerous complaints about the main road from the roundabout, Coppins Bridge, in Newport and feeds the main road into Ryde. In some part it

is sinking and is, generally, in poor repair. This needs to be done before it gets any worse. The traffic hold up on the main Ryde to Newport Road continuous to cause concern. We are still awaiting for works to be done in Quarry Road, by the Allotments, they are in a ridiculously poor state I have repeatedly reported both mine and the residents concerns, with photos. These show how dangerous this area is becoming and heavy rains cause flooding both to the allotments and to the road. The drains are inadequate for the flow of water. We are still waiting to have the shelter at 'Five Ways Corner' cleaned up. It is a hazard to children as there is rotting dogs poo, weeds, rubbish and is generally overgrown. We had the shelter refurbished, and the garden area planted. It looked good, but there has been no ongoing maintenance or cleaning. Lastly, Network Ryde has successfully achieved a Tesco Community Grant, starting last month. The blue tokens do matter! With that in mind enjoy what Ryde has to offer and have a good holiday.

☎ 07867626733

✉ charles.chapman@iow.gov.uk

Isle of Wight Book Awards Winners to be Announced at Grand Literary Lunch



An awards ceremony, held at the Island Sailing Club in Cowes this September, will celebrate the Island's literary talent.

The winners of The Isle of Wight Book Awards 2022 will be announced at the Grand Literary Lunch on Monday September 12.

Three distinguished authors will read from the winning books, which have been judged in three categories: fiction, non-fiction and children's books.

Although the shortlists will be announced beforehand, nobody will know who's won until the judges reveal all at the lunch.

All shortlisted authors will receive a certificate, while the winners will

receive a £100.

One book will also win the Isle of Wight Book of the Year award.

Tickets are now on sale for the event, which will be held at the prestigious venue, from 12.30pm until 3.30pm.

Guests will enjoy a three-course meal,

glass of prosecco and raffle — as well as meeting three nationally known authors in the flesh: Alan Titchmarsh, Joanna Trollope and Hunter Davies.

The aim of the Isle of Wight Book Awards is to promote interest in the Isle of Wight and encourage local authors to write and possibly self-publish their own stories.

These non-profit awards are sponsored by local firms: Hovertravel, IW Festival and Hose Rhodes Dickson plus Medina Bookshop in Cowes and Monkton Arts in Ryde.

Tickets for the lunch at £35 each now available from: Island Sailing Club (islandsc.org.uk) and Isle of Wight Book Awards (iowbookawards.co.uk).



CARBON CLEAN IOW^(Ltd)

Vehicle Diagnostics HHO Carbon Cleaning DPF Cleaning



**DPF Cleaning
Save yourself
from costly
repairs!**

**Cars & Vans
Commercial &
Agricultural
Marine & Plant
Euro 4, 5 + 6
24 Hour Turnaround
Collection &
Delivery Available**

☎ 01983 241522 ☎ 07376 480177

✉ info@carboncleaniow.co.uk 🌐 www.carboncleaniow.co.uk

Follow us on   [carboncleaniow](https://www.instagram.com/carboncleaniow)

Mountbatten Named Official Charity for Tour of Britain Isle of Wight Stage

By Dominic Kureen

Mountbatten will be the official charity for the final stage of this year's Tour of Britain.

The finale of the prestigious event, featuring the world's best riders, will be held on the Island on Sunday September 11.

Mountbatten will work alongside the tour organisers to maximise opportunities to promote its brand and services over the race weekend.

"We are really excited to be part of what promises

to be a really amazing spectacle," said Nigel Hartley, Mountbatten CEO.

"All eyes will be on the Island for the Tour of Britain race and I am delighted we can be involved.

"This will be a fantastic opportunity to raise the profile of Mountbatten, our work and how we support people in so many ways."

Locals and visitors are expected in their thousands to visit the Island to watch the race. It will also be televised to a global audience.

The riders will start in



Toymaster Applies to Shrink its Shanklin Shop

By Louise Hill LDR

A once popular toy and sports equipment store in Shanklin wants to shrink its shop.

Toymaster, on Regent Street in the heart of the town, spans the space of four properties on the street — but it is now too much space for the store.

In a planning application, submitted to the Isle of Wight Council last month, Martha James, of Plan Research on behalf of Steven Young, says the additional floorspace is no longer required due to changes in the business.

The space was last used as part of the Toymaster store, Mrs James said, in November 2021.

The building had previously been a house but was split into a flat above and used as an extension of the store from May 2012.

Now, 10 years later, the ground-floor retail space could be converted into a flat.

Due to the former uses of the building, there is already a kitchen and bathroom on the ground floor so the only works required include a general refurbishment, blocking the access between the store and the flat and re-instating a window.

The rest of the store would remain in retail use.

You can view the plans, 22/01073/3MPA on the council's planning register.

U3A Celebrates 40 Years With Anniversary Events

The Isle of Wight branch of u3a is celebrating the organisation's national 40th birthday with a series of events across the Island next month.



September), a coffee morning at The Bargeman's Rest (7th from 10.30am), a walk from the Highdown Inn (21st) and events in St Thomas

Square which will include a choir and the Bloodstone Border Morris group (24th 10am-4pm).

Everybody is welcome to come along and find out a little more about the group.

So whether you fancy taking up a new language, a new craft, or would just like to meet and chat, or enjoy strolls with good company, u3a has so much to offer.

Throughout September, there will be events to mark the anniversary, including a stand at Wolverton Manor Garden Fair (3rd-4th

Visit www.u3awight.uk to find out more.



Mountbatten

**TOUR OF
BRITAIN**

Proud to be the official charity of the Tour of Britain Isle of Wight stage

Ryde and make their way to The Needles via most of the main Island towns and parishes.

Further details about Mountbatten's involvement in the race will be revealed soon. More details about the race can be found online.



Spice up your life, meet new people, learn new skills, develop new interests.

u3a opens the door to a world of opportunities in your work-free years.

Run by members for members.



Contact: Carol Bradshaw (Chair)
Tel: 07748886246

Email: chair@u3awight.uk www.u3awight.uk



Shanklin Town Council

Town Clerk RFO: Ms S. Janeway LL.B (Hons) CiLCA MSLCC, 65 Landguard Road Shanklin Isle of Wight PO37 7JX

☎ 01983 865101 ✉ shanklintowncouncil@hotmail.com 🌐 www.shanklintowncouncil.co.uk



Town Mayor's address

Councillor Chris Quirk, Shanklin Town Mayor

As you read this the school holidays will be well underway and many

of us will have family visiting to enjoy the beaches and countryside of the Island. The bathing water quality of the beaches in the Bay is measured regularly by the Environment Agency and we consistently achieve the Gold Standard, so bath in the sea with confidence, but please ensure that young children in your party are watched at all times.

Big Mead Pond: Following the relocation of over 150 carp from the pond to a nearby pond on the same water course the Big Mead Pond has been fully drained and the significant build-up of silt will be dredged out in a project funded jointly by the Isle of Wight Council and Shanklin Town Council.

The historic water supply to the pond included a long run from the natural

springs feeding the pond and these had been damaged and blocked by tree roots, which have now been removed. A second spring has been identified and will also be linked to the feeder to the pond, which should ensure that the pond has an ongoing water flow throughout the year.

Once the pond has been dredged the water supply will be diverted back into the pond and once settled the carp will be returned to the pond. You may see the addition of a bluish dye to the pond, this is totally harmless but stops algae overgrowth and maintains water quality.

Island Line: The £26million Island Line upgrade by South Western Railway is now complete and successes in boosting sustainability and biodiversity have led to the award of a top environmental rating.

Shanklin Rowing Club: Shanklin Sandown Rowing Club's single sculler Kayleigh

Batchelor – a potential future Olympian – crowned an amazing season by representing Great Britain in the annual GB v France match in July.

In the spares race, Kayleigh found herself down in the 1st 500m but clawed her way back into the race and found herself out in front for the final 1000m, winning by over 7 seconds. Club captain Garry Walters said:

"We are absolutely delighted and so proud of Kayleigh's achievements. She is a dedicated sculler and will certainly go on to compete internationally for many years. She is destined for future Olympics."

Congratulations Kayleigh, we look forward to hearing about your future successes.

Shanklin & Sandown Golf Club:

Shanklin and Sandown Golf Club recently raised over £4,000 for the Hampshire and Isle of Wight Air Ambulance. Four Shanklin & Sandown golfers played 92 holes over 8 courses in a single day in aid of the incumbent Captains' charity. Well done to all those involved.

VENTNOR MOBILITY CENTRE



Regain your independence...

Agents for scooters, rise/recline chairs, stairlifts and all available mobility aids



FREE HOME SURVEY! We also Buy & Sell
- Can't come to us, we'll come to you!

Unit 4, Old Station Road, Off Mitchell Avenue,
Old Station / Tunnel, Ventnor PO38 1DX

Tel: 01983 855545

**PRE-BOOKED APPOINTMENTS ONLY
TO AVOID DISAPPOINTMENT**

WHITE WINDOWS

THE ISLAND'S PREMIER DOUBLE GLAZING COMPANY

ENERGY BILLS INCREASING?



Our double and triple glazed eco-tech systems delivers a step-change in the use of recycled material and content in a new generation of sustainable and energy efficient PVC-U windows and doors.

With an A+ rating for material type from the Building Research Establishment in its Green Guide, it makes the eco-tech systems among the UK's most sustainable window and door system options.



- W replacing old windows, doors and even conservatories can reduce heat loss
- W along with your roof and walls, old doors and windows can allow heat to escape
- W taking advantage of newer technology can transform your home
- W act now and help keep the warmth in

**WE CAN HELP
CALL TODAY
01983 523552**

whitewindows.co.uk - info@whitewindows.co.uk



July is always Pride time in Ryde and this year was very special. The sun shone, the atmosphere was incredible and everyone had a wonderful time! Ryde Town Council staff and councillors, along with the young people of Network Ryde, were proud to be a part of the celebrations and we are already planning costumes for 2023...

Mayor Michael Lilley says:
"It is fantastic to see a community come together to celebrate IW Pride. Taking part in the procession was an experience that will live very long in my memory and it was quite emotional seeing the town expressing their support so strongly."

Upcoming Council Meetings

Date	Meeting	Time	Venue
Tuesday 9 August	Place, Neighbourhoods & Planning	7pm	Please see the agenda on our website three working days before the meeting for venue details
Monday 23 August	Finance & Community	7pm	
Tuesday 30 August	Place, Neighbourhoods & Planning	7pm	

Tour of Britain

Sunday 11 September sees the national spotlight on Ryde as the starting point for Stage 8 of the Tour of Britain. This is a very exciting opportunity to highlight everything that is great about Ryde and we will be working very hard to ensure that we maximise the colour and excitement of the event for the whole community. **For more information about the Tour of Britain please see: www.tourofbritain.co.uk/stages/stage-eight**



Summer in Ryde

Ryde is fast-becoming the centre of activity on the Island with a huge number of events and activities throughout the Summer. Why not try our paddleboards and kayaks at Appley? Or take the stress out of a day on the beach by hiring your deckchair, parasol, windbreak or sunlounger from the beach next to Ryde Marina? See our social media pages to stay up to date with all of the latest information about Ryde, Summer 2022 is going to be great! **For more information about Ryde please see www.rydetowncouncil.gov.uk**





Direct Cremation Specialists based here on the Isle of Wight for the Isle of Wight
The Island's only Independent Funeral Directors who are dedicated to this style of service
Affordable Direct Cremations. Separate the Cremation from the Celebration.

We pride ourselves by offering great value for money without any compromise on the care given to you and your loved ones.

We are proud to be the longest service Island Independent Family Funeral Directors.



Direct cremations from £1,495
Funeral Plans from £1,750

Call 01983 632598 info@isleofwightdirectcremation.co.uk
www.isleofwightdirectcremation.co.uk

What is direct cremation?

Quite simply, it is an alternative to a traditional funeral. The cremation takes place unattended, giving you the freedom to celebrate your loved one at a time, place and venue of your choice.

How much does a direct cremation cost?

We have 2 options to choose from:-

1. Our 'Island Way' is £1,695.00 - this is for the direct cremation at the Isle of Wight Crematorium
2. Our 'Wessex Way' is £1,495.00 this is for a direct cremation at a mainland crematorium

We offer this option for families who would like to take advantage of savings that mainland crematoriums offer.

Can I get help with the costs?

Yes, if you are in receipt of benefits you may be entitled to a payment of up to £1,000 from the Department of Work and Pensions, so we advise contacting them to enquire.

What is the difference between Isle of Wight Cremation and a mainland provider?

We are based here on the Island, we can take your loved one into our care promptly and without the distressing delay of travelling over on the ferries.

We can meet you face to face at our Island offices. Or make all arrangements over the telephone.

Whereas mainland providers often courier the ashes back, we provide a more personal service by hand delivering them to you at your home, or you can come in and collect them at either of our offices. We are locals and understand our local community.

Do you offer prepaid direct cremation funeral plans?

Yes, we do and we use Golden Charter, the UK's market leader for providing prepaid funeral plans to Independent Funeral Directors. Your funds are safe and placed into the Golden Charter Trust. Recently we were awarded by Golden Charter as the best funeral planner for 2020 in the Southern England Region.



— | LEGAL & FINANCIAL | —

Eldridges' Freshwater Office Welcomes Ian Bradshaw

A popular Isle of Wight solicitor has joined Eldridges' office in Freshwater.

Ian Bradshaw joined Eldridges in January 2021, based in the busy Newport office specialising in residential property as well as wills, probate, powers of attorney and trust work.

He quickly established himself as an asset to the firm and a key team player in its future success. Ian was appointed an Associate Director of the firm in April 2022, and has since made the decision to move to the Freshwater office, where he will be more available to the residents of West Wight and can continue to expand his client base, and offer support and advice in both areas of his work. Ian will, of course,

continue to accept work Island-wide and beyond, and as a key member of the Eldridges team he will still frequent the Newport office.

Ian was born and brought up on the Island. He gained a degree in Politics from Exeter University, and subsequently a degree in Law through the College of Law in Guildford. Having qualified as a solicitor in 2010, he gained knowledge and experience at another local firm prior to joining Eldridges. Ian continues to enjoy working with a diverse range of clients, including individuals, developers and companies alike. Ian has built up excellent working relationships with other solicitors, estate agents and other professionals in the

industry and receives many recommendations from them.

Ian will continue to work in both residential conveyancing and private client departments, as he enjoys the variety each aspect provides. He is known across the Island as a keen and diligent solicitor with a passion for delivering a high level of customer service. He comes highly recommended by previous clients, and many return to seek his advice in subsequent matters, knowing they will get an objective, professional service and a high level of client care and compassion in more sensitive matters. His instructions are received from local clients and those living further afield.

From July 2022, Ian will

be based at the Freshwater office which can be found on Avenue Road, Freshwater, PO40 9UZ, where there is plenty of parking and friendly staff to assist with your legal needs.

In the Newport office, Ian's relocation makes room for Tara Wheeler who is being welcomed to the conveyancing team in August. Tara will be working closely with Ian, Laura Rhodes, Rachel Day and Paula Griffiths in residential conveyancing. Tara is an experienced conveyancer and is currently completing her studies towards becoming a solicitor. She is knowledgeable and easy to communicate with and will be an asset to the busy team. ^③

The Island's
**CARPET & FLOORING
SUPERSTORE**



OPEN 7 DAYS A WEEK

MON - FRI 9AM - 6PM

SAT 9AM - 5PM

SUN 10AM - 4PM

01983 533150

12 Hurstake Rd, Riverway Industrial Estate,
Newport, Isle of Wight, PO30 5UU



NO DEPOSIT INTEREST FREE CREDIT

Subject to status on orders over £495
Excludes fitting charges

Credit subject to status and affordability. Terms & Conditions Apply. D&S Carpets is a credit broker and is Authorised and Regulated by the Financial Conduct Authority. Credit is provided by Novuna Personal Finance, a trading style of Mitsubishi HC Capital UK PLC, authorised and regulated by the Financial Conduct Authority. Financial Services Register no. 704348. The register can be accessed through <http://www.fca.org.uk>

www.dscarpets.co.uk

Rugs

Luxury
Vinyl Tiles

Wood & Natural
Flooring

Vinyls

Carpets

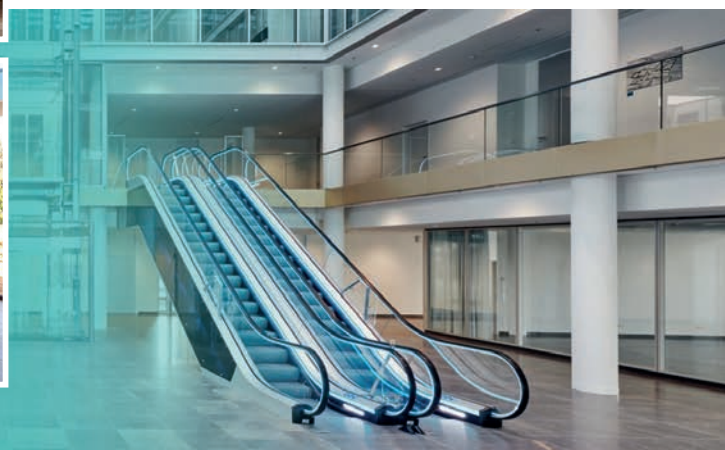
Elevator & Escalator Servicing and Maintenance

Around the South Coast and Isle of Wight



Services we offer...

- Lift service/Maintenance
- Lift Repairs
- Lift Refurbishment
- Lift Installation
- LOLER Inspections
- All Escalator Works
- Maritime (Ships) Lift Works
- Scenic Lift Glass Cleaning



Call us on: **01983 722713** Email: coastal@deltronlifts.co.uk Visit: deltronliftscoastal.co.uk

Office 4, Exchange House, St Cross Ln, Newport, PO30 5BZ



LEGAL & FINANCIAL

The Care Cap

Is it as good as it sounds?

From October 2023, there will be a lifetime cap of £86,000 for the cost of a person's care. The premise is that every individual requiring care will pay a maximum of £86,000 for their care in their lifetime – sounds good doesn't it?

The government have now set out more detail about how this is expected to work in practice and what this means for people requiring care at home and also in a residential setting.

Those requiring care currently fund their own care if their assets exceed more than £23,250. This upper threshold will increase to £100,000. The lower cap which is currently £14,250 is rising to £20,000. This means that if you have assets between £20,000 and £100,000 you will pay a contribution from your capital; for every £250 in capital you have, you pay £1 a week towards the cost of your

care. For example, if you have £90,000 in cash assets, you would contribute £280 a week for your care from the capital. Your income is also taken into account. If your assets fall below £20,000 you will no longer contribute from your capital but your income is still taken into account.

Your property is included in the value of your assets if a property disregard does not apply – property disregards include where you are having care at home or if you are in care but your spouse is still residing at home.

In addition to the increase in the thresholds, any money that you pay towards your personal care cost (whether at home or in

a residential care setting) goes towards your care cap which is set at £86,000. There is a distinction between the cost for care and the cost of Daily Living Contribution (DLC) and provided you have more than £20,000, you will continue to pay towards the DLC even when you hit the care cap of £86,000. The DLC covers the cost of rent, food and utility bills and has been set at £200 per week rising with inflation (so likely higher when the cap starts). The reason for this is so that people living at home are not penalised as they would still be paying their DLC as normal.

Whilst this is better than the current system, people will still end up paying more than

the £86,000 'cap' due to this addition of the DLC.

People who are in care or are receiving care already will not start paying towards the cost until October 2023 so any money being spent now does not count. Every person that needs care will also need to be assessed by social services so that they can open up a care account for each individual. If you do not have an assessment then any money paid for care does not count towards the care cap.

Planning for the future is therefore very important and there may be options available to you in your Wills which can protect your assets for your future generations. ③

ISLE OF WIGHT, WE CAN'T AFFORD TO WASTE WATER

The water we all rely on comes from our local rivers. To protect them, together we need to use less this summer.

We're investing more than ever to find and fix leaks on our network. You can help too.

Visit southernwater.co.uk/save-water to find out more about using less.



from
**Southern
Water.**

7002_722



botanic.co.uk/whats-on

Live music
Great food
Garden bar
Family Friendly
Explore the Garden

Join us for our Tavern
Nights at Ventnor
Botanic Garden, every
Friday & Saturday
evening.

18:30 - 20:30



SUMMER SCORCHERS

How to revive your garden after the long hot summer.

If you think you suffer from the heat as far as summer goes, think how that sun-baked fares without even so much as a dash of sun lotion.

Of course, any knowledgeable gardener will tell you it's better to take action to protect your flora while the sun is out, but hindsight is a wonderful thing, and if by the time you get to late summer you realise the damage has already been done, there are at least a few techniques that will begin the restoration process for your beloved garden.

Following the guidelines below will give your green space a chance to repair before the bareness of autumn and shivering sensibilities of winter bring about altogether different challenges!

WATER WATER WATER

It's the fuel that keeps your plants alive, so if the autumn proves to be as stingy on precipitation as, let's be honest, we all hope the summer will be, tending to your land

with plenty of nature's lubricant is the best thing you can do.

Water will stimulate stems, fire up flowers and galvanise grass, but moderation is the key, and as we've all experienced in the past, overwatering is just as bad as underwatering.

So take an organised route to regular hydration in the garden, and gradually bring things back to life.

“So take an organised route to regular hydration in the garden, and gradually bring things back to life.”

NOTHING BUT A DIRTY GRASS

Just as you'd exfoliate your own skin to remove dead matter, do exactly the same with your garden. Remove debris and dust to make the land as ready for replenishment as possible, with simple clearing away of organic residue exposing the ground to moisture and sunlight aplenty.

Of course, if you have a composting area then all these swept-away bits can be used to bolster what will become a fertile store that can be then reintroduced into your flower beds and earth areas.

FIRST-CLASS FERTILISER

It does exactly what it says on the tin (or bag, or spray), and the best way to boost growth where your living matter is concerned is with an approved, high-quality fertiliser. Giving your garden a helping hand is always smart, though research well and choose a fertiliser that matches your environmental conscience. Remember too not to apply until growth is already well on its way, or you'll simply end up scorching the earth. ►►►



CUT BACK TO MOVE FORWARD

The more you mow, trim and prune, the quicker your greenery will spring back to life, so this is a great way to get your plant matter back in fully efficient mode.

Many people only realise the full space and beauty of their gardens when they begin cutting back elements that have been left to their own devices; so while a worthy exercise for the flora and fauna of your garden, you'll undoubtedly feel enthused and enlightened at the renewed space you've created.

STARTING AFRESH

And of course, the best way to get your garden humming again is to invest in it.

Consider plants, flowers and other additions that will suit the rustic autumn season to come.

With a few new purchases you'll be inviting the neighbours round again before you know it! ☺



**YOUNG
PLUMBING**
PLUMBING & HEATING SERVICES

**Tel: 01983 339671
Mb: 07967 225030**

www.YoungPlumbing.co.uk

A&E BUILDERS
BUILDING & CONSTRUCTION SERVICES
No job too big or small!

EMAIL: aebuilders71@gmail.com

- DRIVEWAYS • PATIOS • EXTENSIONS
- SPECIALIST BRICKWORK
- ORANGERIES • PORCHES
- DRAINAGE & HOUSEHOLD MAINTENANCE

Call for a no obligation free quote from a builder with over 30 years experience. Public liability insured.

TEL. 07525700980/01983 883787

JOSH KERLEY TREE SERVICES

ALL ASPECTS OF TREE WORK UNDERTAKEN
NPTC QUALIFIED & FULLY INSURED

Tel: 07875 021 682



**SOLENT
FUELS**

Domestic and
Commercial Heating Oil,
Agricultural and Marine
Diesel supplied from our
Newport fuel depot.

On the Island,
for the Island.

Call 01983 654321
to speak with our
dedicated team to
order your Fuel or
Heating Oil.

Solentfuels.co.uk



Scan here to go directly to our website



THE ISLAND'S FAVOURITES
**isle of
wight
radio**



**"Topping in
the Morning"**
with Paul, Jamie
and Hayley
every weekday
from 6am

FM107.5 & 102
For the latest
breaking
news visit
iwradio.co.uk

FACEBOOK
[isleofwightradio](https://www.facebook.com/isleofwightradio)
TWITTER
[@iwightradio](https://twitter.com/iwightradio)
INSTAGRAM
[@iwightradio](https://www.instagram.com/iwightradio)

The Island's **Favourites**



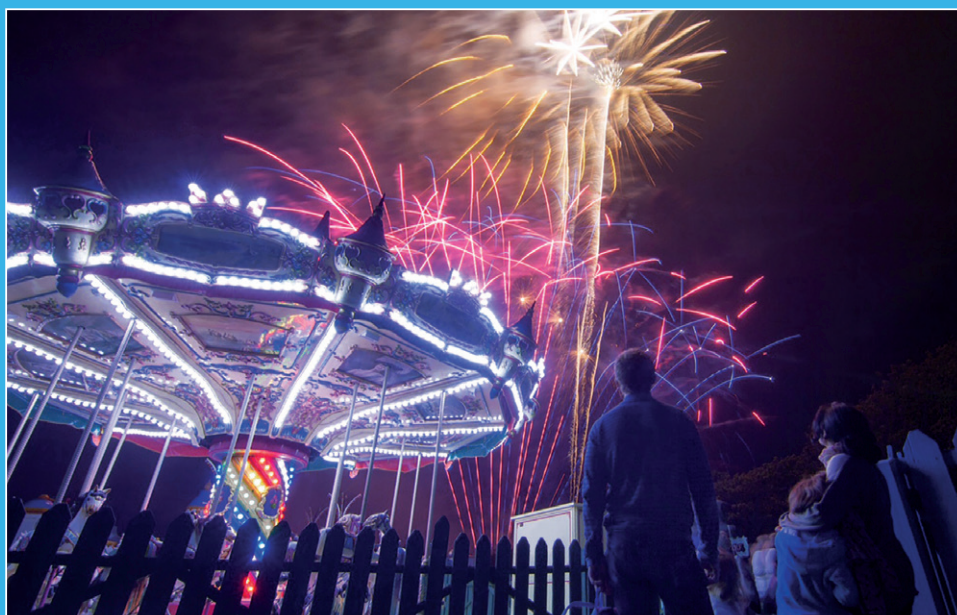
**Sign up to the
Beacon newsletter**

www.iwbeacon.com

WIN! Can you spot the differences?



Visit The Needles every Thursday between 4th August & 1st September for a host of family entertainment, live music, and iconic firework displays. Throughout the summer season The Needles Landmark Attraction will be joined daily by a variety of different performers with magic shows, live music, including: Derek Sandy, Randini, Stevo & Kai, Groove Union and many others. Open from 10am until late into the evening for live music, entertainment, shopping and foodie treats.



THIS MONTH'S PRIZES...

TERMS & CONDITIONS APPLY



£25 Grace's Bakery Voucher
Courtesy of Grace's Bakery
178 High St, Ryde, Isle of Wight
Tel: (01983) 632231
gracesbakery.uk



2 x Early Bird Breakfast tickets
Courtesy of Wildheart Animal Sanctuary
wildheartanimalsanctuary.org



Pizza for Two
Courtesy of GG's Bar and Restaurant
ggsiow.com



Two tickets to see Handbagged (14th-22nd October excluding the Sunday and Monday). Courtesy of Apollo Theatre
Tel 01983210010
apollo-theatre.org.uk

NAME:

TEL:

ADDRESS:

POSTCODE:

E-MAIL:

- ☐ I am happy to be contacted by the sponsors for marketing purposes
☐ I would like to receive Beacon Magazine's weekly email newsletter with more competitions

Closing date - 31ST AUGUST 2022

Send your entries to: **IW Beacon Competition, 8-10 Dodnor Park, Newport, Isle of Wight, PO30 5XE**
When sending your entry to us you **MUST** ensure that you use the correct postage. Terms and conditions available on request.
Prizes must be claimed within 30 days of the draw date. Previous winners can be found on our Facebook and Twitter pages.
Winners will be contacted by phone.

Did you know...

You can take a photo on your phone and email your entry to **win@iwbeacon.com**.



**FULLY
ELECTRIC**

SNOWS ISLE OF WIGHT RENTAL

**Your key to door-to-door
service and great value.**

A range of fully-electric vehicles are now available across a selection of brands with the Snows Isle of Wight Rental Service. Book for 24 hours, a weekend, weekly, and even monthly periods, all at extremely competitive prices.

**Scan the QR code
or call for further information**



[SNOWS.CO.UK/IOW](https://snows.co.uk/iow)
iowrental@snows.co.uk



FOREST ROAD,
NEWPORT, PO30 5QJ
t: 01983 214 664