

CENTRAL AND
WEST WIGHT

Pick up your **FREE** copy

Beacon

June 2022

HISTORY
**CORONATION
CELEBRATIONS**

GARDENS
**SHADY
CHARACTERS**

WALK
**FOLLOW THE
FOOTSTEPS
OF ROYALTY**

ISLAND STORY
**70 YEARS ON
THE THRONE**

Platinum **JUBILEE** SPECIAL

**Fuss-Free 30
Day Contracts**

Pay what you see,
leave at any time*



Fibred areas only.



- Unbeatable Value
- Unbeatable Price
- Speed Guarantee
- WiFi Guarantee

wightfibre
because we care

Order online at wightfibre.com
or call **01983 240240**

A Different Kind of Broadband Full-fibre • Ultrafast • Future-proof

Summer INSPIRATIONS

Delivering affordable luxury and
over 40 years experience



www.joedan.co.uk

Visit your local Design Centre.

Open Mon - Fri 9am - 5pm • Saturday by appointment only

5 Daish Way • Isle of Wight • PO30 5XB

t: 01983 825055

BOURNEMOUTH | ISLE OF WIGHT | ORPINGTON | TEWKESBURY | WINCHESTER

lusso
ALUMINIUM



JOEDAN
WINDOWS & DOORS



Welcome from the EDITOR

As the nation celebrates the Queen's Platinum Jubilee, we thought it was fitting to make Her Majesty this month's cover star.

No other British monarch has reached this incredible milestone. And what better way for us to celebrate this month, than with community events and street parties, just like the Island did back in 1953 for the Coronation.

Throughout this edition of Beacon, you can look back at pictures from that iconic day, while finding out how you can make similar memories across the Isle of Wight for the Platinum Jubilee.

We also bring you an Isle of Wight walk which takes you through iconic places visited by Queen Elizabeth II, as well as Queen Victoria before her.

With all that and your usual mix of recipes, gardening and history, there's plenty to read in this month's Beacon Magazine.

Amy Shephard

Editor amy.shephard@iwbeacon.com



- 5** Recipe: Perfect Pulled Pork
- 7** Walking the Island: Follow in the footsteps of royalty
- 9-10** Child of Wight Awards 2022 Winners
- 13** History: Family business celebrates Platinum anniversary
- 16-20** Platinum Jubilee celebrations
- 21** The Entertainment Guide
- 22-25** News from Your Area
- 31-32** Gardening: Shady Characters
- 35** Spot the Difference Competition



Beacon

MAGAZINE

IW Beacon Media Centre, 8-10 Dodnor Park, Newport, PO30 5XE

CALL US
01983 433112

FACEBOOK
iwbeacon

TWITTER
@iwbeaconmag

VISIT US
iwbeacon.com

INSTAGRAM
@beaconiow

EMAIL
hello@iwbeacon.com

totalsensemedia



Open Evening 21st June

A touch of royalty is the message from the Isle of Wight College and CECAMM as they open their doors to prospective students and their families for the evening on the 21st of June from 4pm – 6.30pm.

The Isle of Wight College open evening is an opportunity for visitors to tour the college campus, talk to existing students, find out about the exciting T Level post 16 option, and get involved with various demos and tastings around the site.

The open day is not only for students leaving school, there will also be opportunities to find out more about:

- Apprenticeships •
- Distance Learning •
- Adult Learning •
- Short Courses •
- Employer Training •
- International opportunities •
- University Centre Isle of Wight •

There is no need to book.
Please visit the college website for more information.

@iwcollege

iwcollege.ac.uk

£100
Joining
Bonus!



Isle of Wight
Pubs

Character Inns are a
collection of six family-owned
and run food-led pubs located
throughout the Island.

Finished School or back from Uni? EARN... GOOD MONEY!



The Bugle Inn
Yarmouth



The Crab & Lobster
Bembridge



The Buddle Inn
Niton



The Sun Inn
Hulverstone



The Kings Head
Yarmouth



The Caulkheads
Sandown



**Bar, Floor &
Kitchen Staff**
£10-£14
PER HOUR

APPLY NOW!

www.characterinns.co.uk/careers

Perfect Pulled Pork



SERVES

8

INGREDIENTS

2.5kg (5lb 8oz) shoulder of pork, bone in
3 tbsp muscovado sugar
2 tbsp salt
1 tbsp smoked paprika
1 tbsp ground cumin
1 tsp chilli powder
1 tbsp garlic powder
Freshly ground black pepper
300ml (10fl oz) beer, cider or apple juice

METHOD

1 In a bowl mix up the sugar, seasoning and spices. If the meat isn't already scored, then using a sharp knife, make scores diagonally across the fat. With a

paper towel, pat the meat dry and rub approximately half the seasoning mix over the meat, rubbing well into the scores. This can be done up to 24 hours in advance of cooking and then refrigerated.

2 Preheat oven to 220°C (200°C Fan, 390°F, Gas 7). Place the joint into a large roasting tin or casserole dish and roast in the hot oven for 25 minutes.

3 Turn the heat down to 160°C (140°C Fan, 320°F, Gas 3). Remove from the oven and pour the beer, cider or apple juice into the base of the roasting tin. Cover with a tight-fitting lid or double thickness foil, ensuring it is fully closed to prevent steam escaping.

4 Cook for 6 hours or until the meat falls apart and pulls easily away

from the bone. Remove the lid or foil, pour off the juices and reserve. Turn the heat back up to 220°C (200°C Fan, 390°F, Gas 7) and cook the pork, uncovered for 15 minutes to crisp up the fat. Take out and allow to rest for 30 minutes.

5 Remove the meat from the bone and using two forks pull the meat into shreds, cutting up the crackling as well for added texture and flavour. Then add the rest of the seasoning and spice mixture and some of the reserved juices and toss together.

6 Serve immediately in soft buns, it should be deliciously succulent and tasty with crunchy coleslaw and barbeque sauce.

This delicious recipe is ideal for al fresco summer parties and it's certain to get the guests chatting; Adele Trathan recommends serving in soft bread rolls, accompanied with barbecue sauce and crunchy coleslaw.

HTP: THE PROFESSIONALS' CHOICE

FOR WORKPLACE TRAINING

- Grow your business
- Keep your staff
- Upskill your team
- Up to 100% funded by government



We work with businesses across the Isle of Wight and the south to deliver high quality staff training to help your business grow.

We know that hiring and retaining good people is a challenge and that keeping staff motivated and valued is really important.

We'll work with you to upskill your team – designing bespoke training packages for your staff, and helping you to access government funding to support your business development.

We have specific training programmes in areas like **Business Administration, Health & Safety, HR, Customer Service, Marketing, Hospitality & Catering**, and much more.

Or why not develop your staff to help them progress into management? **Industry-recognised management qualifications** can make a real impact on your organisation.

Our programmes are flexible and designed to suit your business. Most of the training takes place at work, making 'day release' a thing of the past. And don't forget – for most businesses the government pays at least 95% of the training costs.

Talk to our Business Development Team today about our wide range of work-based qualifications. We can help your business thrive, without hiring new staff and without breaking the bank.

That's why, when it comes to high-quality training, professionals across the Island choose HTP.

UPSKILL YOUR TEAM

Ella Morris at Vestas Blades in Newport

Recently achieved a Level 5 Learning and Development Consultant/Business Partner qualification

Call the team now on 01983 533926 • Email info@htp.ac.uk



The Queen's Diamond Jubilee visit to the Isle of Wight in 2012 began with a 21-gun salute from the Royal Yacht Squadron, before her majesty and the Duke of Edinburgh walked along the Parade accepting gifts from well-wishers.

S Start at the entrance to Ryde Pier and walk west along the Esplanade. Walk along St Thomas' Street and into Buckingham Road. Walk up the hill and then take another turn into Spencer Road.

Walk along Spencer Road until you reach Ladies Walk. Walk through a set of gates and pass through the entrance to Ryde House on your right.

Follow a tarmac path, over a bridge and up the hill until

you pass Binstead Church on your right.

Follow the path to your left before turning into Church Road.

Walk for 50 metres before taking a right turn. Take a path to the left of a gated house and walk through woodland until you get to Quarr Road.

At Quarr Road, turn right and walk until you join a gravel path which leads to the old Abbey at Quarr.

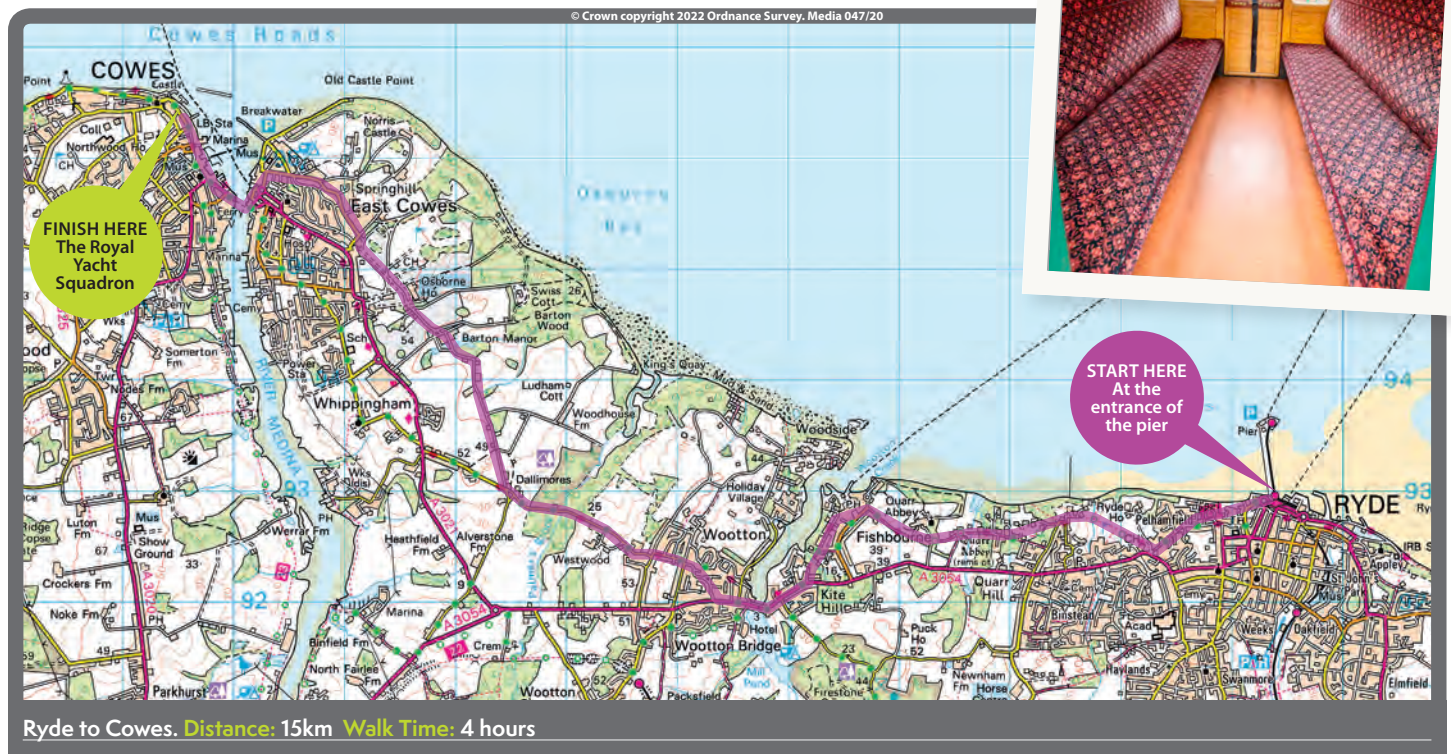
Continue along the route until you pass the entrance to

Quarr Abbey and join the road at Fishbourne Lane.

Take a left, with Wightlink Ferries on your right and turn off at the public footpath labelled R1. This points towards Kite Hill. Walk along the path until you reach a barrier.

Here you should take a left into Ashlake Copse Road and walk until you reach woodland, followed by a footbridge which leads towards the main road. >>>

Below: Queen Elizabeth II travelled on a restored Steam Railway, during her visit to the Island in 2004. Queen Victoria used the station on at least one occasion, on 11 February 1888, when she travelled from Whippingham to Ventnor and back for the opening of the National Consumption Hospital there.





Osborne House.

Queen Victoria was a frequent visitor to Quarr Abbey House, and her daughter, Princess Beatrice and Prince Henry of Battenburg, honeymooned together there.



Turn right to reach Wootton Bridge. Be careful to walk along safe footpaths as you head toward The Sloop. You'll find a gravel path to New Road. Now take a left next to the old primary school.

Keep walking until you join St Edmunds Walk, before turning left past Whitehead Crescent, then left again until you join Church Road.

Cross into Footways and join Palmers Road. Turn right almost immediately into Brocks Copse Road. Palmers Farm should be on your right.

Cross Palmers Brook via a

bridge and continue on until you join Alverstone Road.

Walk past the Post Office and join the main road. Here you need to turn right and walk along the main road towards East Cowes. You should pass Osborne House on your right.

Walk along York Avenue

to East Cowes town centre. Take a left towards the floating bridge.

Take the floating bridge to Cowes.

Once you're off the floating bridge, walk along Medina Road towards Bridge Road.

Take a right turn into

Birmingham Road and continue on to Shooters Hill.

Join the high street and walk until you reach Bath Road, followed shortly by The Parade.

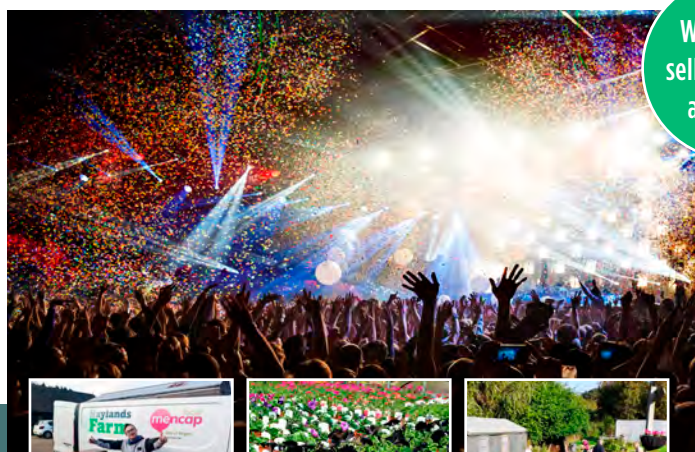
Head along the parade until you reach The Royal Yacht Squadron, where your walk ends. ☺

Haylands Farm

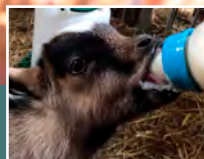
34 Salters Road PO33 3HU Ryde, IOW.

Tel: 01983 566038 | Email: info@haylandsfarm.co.uk | www.haylandsfarm.co.uk

Providing Training,
Education & Work
Experience for People with
a Learning Disability



We are also
selling clothes
at festival



CUT ME
AND KEEP!

Haylands Farm will be at the IOW Festival from 16th -19th June, come and say hello and receive 15% off when you quote Beacon Magazine.

Also outside the Co-Op in Ryde every Tuesday, for all things plant related!

Offer available until the end of July



All pictures by Robin Crossley

THE ISLAND'S FAVOURITE... isleofwightradio CHILD OF WIGHT AWARDS

The Island's young heroes have been crowned at Isle of Wight Radio's Child of Wight Awards 2022.

Friday 13 May saw the event, with headline sponsors WightFibre, return in-person for the first time in two years.

Tapnell Farm Park was the setting this time round, with nominees given the chance to enjoy the fun facilities before celebrations got underway.

The evening also featured performances from Theatretrain and Huxley magic.

Among the winners were an awe-inspiring carer, three fantastic fundraisers and a budding speedway star. The awards were hosted by Breakfast Show hosts Paul Topping and Heather McCallum.
Overall winner sponsored by WightFibre

Born three months early weighing just 500 grams, Hartley Brett has been through more than most people do in a lifetime. He spent nearly the first year of his life in hospitals – and has been back and forth on many occasions since. But his tough start to life hasn't stopped him smiling.

Hartley's sister Lily accompanied Hartley to the ceremony, alongside his aunty Claire who nominated him for the award.

Lily said: "I'm feeling really nice about it [Hartley winning]. We weren't expecting it either!"

Asa Singleton Most Courageous Child Award sponsored by Wightlink

In 2020, Simon Apsey lost his beloved Nanny and Grandad (Ray and Rosemary Scovell) to Covid within weeks of each other. Despite going through a difficult time, he's shown courage and bravery.

He even helped to organise – and perform – in a tribute concert for his grandparents.

Young Carer Award sponsored by Deltron Lifts Coastal

10-year-old Dottie-Rose Wagstaff has been an incredible help to her mother Tracey, who suffers from a degenerative disease.

On the days when her mum is unable to get out of bed, this special little girl will feed her mum's ability dog, clean up around the house, and provide her mum with lots of love and care. She never, ever

complains – and studies hard at school to achieve her dreams.

Fundraiser of the Year Award sponsored by Red Funnel

Between them, Jasmine, Fleur and Obie Woodward have raised an incredible £1,600 for Prostate Cancer UK. They walked 25,000 steps every day through March.

The siblings were inspired to raise funds after their Grandad passed away from the disease a few years ago.

Make a Difference Award sponsored by Utilita

Macie-Edkins Wherry is this year's Make a Difference award winner. The 16-year-old used money from her paper round to buy cards and gifts for care home residents who might not get visits at Christmas and Easter.

She also raised money to help get a mental health and wellbeing room set up at her school.

Best Brother Award sponsored by Caffè Isola

Life hasn't been easy for him of late, but Ronnie Kidd has been strong throughout.





*“It never ceases to amaze me
how remarkable young people
on the Island are”*

At just eight-years-old, he has gone out of his way to look after his big brother, who has a rare condition called Charge Syndrome.

Best Sister Award sponsored by Wonder House Early Learning Centre

“Inspirational” Mya Johnson has helped look after her little brother, who's been poorly since birth. The six-year-old herself has a genetic condition called Di George Syndrome, but she faces it all with a smile.

Her parents say she is a “very loving big sister and wonderfully well behaved daughter.”

Sporting Star Award sponsored by Richardsons Yacht Services

He may still be young, but budding swimmer Harry Sheppard has already achieved remarkable success.

In February, he was accepted into the Hampshire County Championships for 100 metre Butterfly, winning his heat for the age 16 group.

Best Friend Award sponsored by Esplanade

14-year-old Barney O'Connor has been

helping to care for his brother, who has a learning disability and autism.

He's been described by his family as “an extraordinary person who is always selfless and accepting.”

Top Performer Award sponsored by Snows

This year's Top Performer is used to the stage. Chloe Neale trains day and night in ballet, tap, modern dance, acrobatics, singing and piano — to name a few!

Last summer, she represented England at the finals of the Dance World Cup with her troops from Ryde Academy.

Young Achiever sponsored by Phoenix Youth Services

Not only does Kye Elliot ride bikes at Speedway, but he also volunteers at the track every week.

He's been described as “a wonderful young man”, who says getting on a speedway bike makes all his worries disappear.

Isle of Wight Radio Managing Director, Claire John, said: “What an amazing, emotional night! Every time Isle of Wight Radio hosts these awards it

never ceases to amaze me how remarkable young people on the Island are. We had so many incredible nominations and each winner is incredibly deserving. Well done to all of them and a big thank you to all our sponsors and the awards' new venue Tapnell Farm, for making it such a fun-filled event. What a night!”

WightFibre Chief Executive, John Irvine, said: “This is the best and most important awards ceremony on the Island. It's for the young people on the Island. Young people on the Island get bad press very often. Anyone who watches these awards will see that actually there are so many amazing young people, very deserving young people, here on the Island.” ^B

Sponsored by
wightfibre
because we care

JACK UP EVENTS PRESENTS

RETRO STAYCATIONS, RYDE
AN EVENING WITH

ABBA Chique



1ST JULY
 Tickets £20.50
 Teens £10.50
 Kids go free

Prepare to be transported right back to the 1970s and '80s...

Outstanding vocals, stunning costumes and all of ABBA's greatest hits will guarantee a fun-filled night of entertainment you won't forget!

The ABBA Chique Tribute Show recreates ABBA as they were in their prime; sexy, energetic and rocking. Made up of a full 5-piece band of pro musicians, this dynamic act pride themselves on their authentic ABBA sound and look, ensuring a professional, polished show, packed full of glitz and glam.

On the evening of Friday 1st July, this solid gold performance will take place on Jack Up Event's shiny new silver bullet Airstream stage. Situated in a pretty meadow on a small working farm, overlooking the scenic views of nearby Brading Downs, this will be an open-air concert. With a Real Ale bar courtesy of Island Ales and freshly cooked local produce BBQ prepared by Hazelgrove Farm kitchen, it's the perfect way to party your way into Summer!

jackupevents.co.uk

Free parking available on-site

ISLE OF WIGHT
CANTATA
Choir

7.30PM SATURDAY 25th JUNE 2022
 Ryde Methodist Church, Ryde PO33 2PT

Gloria
 Vivaldi

Zadok the Priest
 Handel

I Was Glad
 Parry

The Lily and The Rose
 Chilcott

Tickets: £10
 Web: iowcantatachoir.co.uk/concerts
 Tel: 07760 852074

Registered Charity: 1044777

Da Vinci
 Mediterranean Restaurant & Bar

*Steak on the rocks,
 fresh pizza, speciality
 cocktails.*

11 Holyrood Street, Newport PO30 5AU
 For Bookings: 01983 300055
www.davinci.iow.co.uk

Ventnor Botanic Garden

A summer of events at
 Ventnor Botanic Garden,
 there's something for everyone.




- 3rd - 5th June - Wellbeing Weekend
- 5th June - Jubilee Picnic in the Garden
- 18th - 25th June - **50 Years A Garden, 50th anniversary week**
- 24th July - The Tales of Peter Rabbit - Quantum Theatre
- 31st July - The Reluctant Dragon & A Midsummer Night's Dream - Quantum Theatre

botanic.co.uk/whats-on/

Facebook Instagram Phone 01983 855397 Location PO38 1UL

VENTNOR MOBILITY CENTRE



**10%
OFF**
ON PRODUCTION
OF THIS ADVERT

Regain your independence...

Agents for scooters, rise/recline chairs, stairlifts and all available mobility aids



FREE HOME SURVEY! We also Buy & Sell
- Can't come to us, we'll come to you!

Unit 4, Old Station Road, Off Mitchell Avenue,
Old Station / Tunnel, Ventnor PO38 1DX

Tel: 01983 855545

**PRE-BOOKED APPOINTMENTS ONLY
TO AVOID DISAPPOINTMENT**

F.ROBERT FRISE JEWELLERS

ESD.1952

Gifts & Fancy Goods for all occasions
Modestly priced Gold & Silver Jewellery
Silver Plate, Photo Frames, Pens, Trinket Boxes
Watches (Limit, Lorus, Sekonda & Timex)
Clocks (Antique & Modern) - Barometers - Sports Trophies
Engraving Service
(Metal & Glass - subject to suitability)
Free Engraving on items purchased on site (except glass)

Repair Service

Clock, Watch & Jewellery Repairs
Watch Batteries/Straps/Bracelets Supplied & Fitted
Watch Bracelet Alterations - Car Key Fob Batteries

KIMBERLEY HOUSE, HIGH STREET, FRESHWATER, IOW, PO40 9JX

TEL: 752418 FROBERTFRISE@AOL.COM

FROBERTFRISEJEWELLERS.COM - WIGHTIME.COM

You'll find us up the hill in the one-way High Street

Open 9am - 4.30pm Mon-Fri



Cherry Tree
shutters

Changing your view

**20%
SALE
NOW
ON!**

01983 640174

www.cherrytreesshutters.co.uk

*Providing interior plantation shutters to cover any window
style or colour including; Square, Rectangle, Circular,
Arched, Bays and Patio Doors.*



**Terms & Conditions Apply*

Checkatrade.com

0%

**FINANCE
AVAILABLE**

Platinum Anniversary FOR FRESHWATER FAMILY BUSINESS

F. Robert Frise, the Watchmaker, Clockmaker & Jeweller in Freshwater's one-way High Street on the hill, celebrated its 70th anniversary on 2nd May.

The original shop in Station Road (now School Green Road) was rented for £1 per week in 1952 by Business Founder Francis Robert (Bob) Frise. Without the need to travel to Newport by train to work, and by giving up smoking, Bob was able to afford the rent and to establish the shop and workshop.

The business blossomed and the shop has been at its current location since 1964

The business blossomed and the shop has been at its current location since 1964. Bob Frise passed away in December 2010, aged 94, having worked in the business until 6 months prior to this. His Daughter, Heather, joined the business after she married in 1967 and initially worked there for £1 per week. Sadly, she passed away suddenly in July 2015 having held a leading role in the business for 48 years.

The shop went from



F. Robert Frise Jewellers as now



Shop & High St July 1988



Station Road 1954 & F. Robert Frise 1st Shop



Andrew (Grandson) & Donna Cooke, Heather Cooke (Daughter - nee Frise) & Francis Robert (Bob) Frise, 2008

three generations of the family to one in just 5 years and is now run by Heather's Son, Andrew, and his wife Donna. Andrew grew up in the business and learned to repair clocks before he left

school whilst Donna joined the family in 2002 and has been a part of the business ever since.

The shop continues to provide an array of repair services from watches to

mechanical & quartz clocks and all types of quality jewellery plus engraving, watch batteries, watchstraps/bracelets and more. ☺

Full details can be found at frobertfrisejewellers.com.



Bob, Gladys & Heather Frise during the flooding of 1954. Heather was 10.



Station Road Flooding 1954 & F. Robert Frise Shop on the right



Lighting the way.

The all-new TUCSON Hybrid has landed.

On to better.

At Hyundai we know that progress only comes when you do things differently. The unique Parametric Jewelled Lights of the all-new TUCSON mean that it doesn't look like any other SUV. And with its innovative hybrid technology and advanced SmartSense safety features, we're lighting the way in more ways than one.

Discover more at hyundai.co.uk #lightingtheway

Leslies Hyundai

College Close, Sandown PO36 8EB
01983 405565 | <https://dealer.hyundai.co.uk/wight-motors-isle-of-wight>



Fuel Consumption figures for the TUCSON Hybrid. Mpg (l/100km): Combined 39.8 (7.1) to 50.4 (8.6), CO₂ emissions: 160 - 127 g/km. Figures shown are for comparison purposes only compared to other vehicles in the same category. These figures may not reflect real life driving results, which will depend upon a number of factors including the accessories fitted (post-registration), variations in weather, driving styles and vehicle load. Hyundai's year warranty subject to Terms and Conditions.



SOLENT FUELS

Domestic and
Commercial Heating Oil,
Agricultural and Marine
Diesel supplied from our
Newport fuel depot.

On the Island,
for the Island.

Call 01983 654321
to speak with our
dedicated team to
order your Fuel or
Heating Oil.

Solentfuels.co.uk



Scan here to go directly to our website



MILLENNIUM WINDOWS LTD

UPVC Doors & Windows, Conservatories and Fascias
& Gutter Installations on the Isle of Wight.

CALL US ON **01983 810 888**

millenniumwindowsiow.co.uk facebook.com/millwindows

WHITE WINDOWS

THE ISLAND'S PREMIER DOUBLE GLAZING COMPANY

ENERGY BILLS INCREASING?



Our double and triple glazed eco-tech systems delivers a step-change in the use of recycled material and content in a new generation of sustainable and energy efficient PVC-U windows and doors.

With an A+ rating for material type from the Building Research Establishment in its Green Guide, it makes the eco-tech systems among the UK's most sustainable window and door system options.



- W replacing old windows, doors and even conservatories can reduce heat loss
- W along with your roof and walls, old doors and windows can allow heat to escape
- W taking advantage of newer technology can transform your home
- W act now and help keep the warmth in

**WE CAN HELP
CALL TODAY
01983 523552**

whitewindows.co.uk - info@whitewindows.co.uk



THE ISLAND SAVOYARDS PRESENT

Be our Guest

The Island Savoyards invite you to "Be Our Guest" at their gala concert celebrating 50 glorious years. The cast will be joined on Shanklin Theatre stage by a large orchestra for this special performance; featuring favourite numbers from Gilbert and Sullivan to more modern-day musicals such as Sister Act, 9-5, Chitty Chitty Bang Bang and Beauty and the Beast, all presented in true spectacular Island Savoyard fashion. With half a century of fabulous shows to choose from, there is sure to be something for everyone!

The Island Savoyards were formed in 1971, originally performing Gilbert and Sullivan operettas such as HMS Pinafore, Pirates of Penzance, The Mikado and Iolanthe. The company enjoyed several decades staging this genre of music before making the switch to performing West End musicals

in 2012. Since then, the Island Savoyards have entertained audiences with productions of Beauty and the Beast, Titanic, Grease, Joseph and the Amazing Technicolor Dreamcoat and My Fair Lady to name but a few. After a quiet couple of years because of Covid19, the Savoyards returned in October 2021 with a successful run of the cult show Little Shop of Horrors.

Due to the pandemic, The Island Savoyards were forced to delay their 50th anniversary plans by a year but are determined to celebrate this special milestone in 2022. In addition to Be Our Guest, the company began their anniversary year by staging the powerful and thought provoking The Hunchback of Notre Dame. They will then return to Shanklin Theatre in October with the Broadway classic Guys and Dolls.

So, "Be Our Guest" and join The Island Savoyards for this one-night-only fabulous celebration evening on SATURDAY 11TH JUNE, 7.30pm at Shanklin Theatre. Tickets are £15.00 and available from the theatre box office on 01983 868000 or online at www.shanklintheatre.com.



THE ISLAND HAS TALENT 2022 - REGISTER NOW!

We are looking for singers, dancers, comedians, jugglers and more! Show us your talent!

Heats on 9th July, 23rd July & 6th August. Final on 22nd August.

Hosted by
Derek Sandy

THE WINNER WILL RECEIVE A £1,000 CASH PRIZE.

Free to attend and watch with all the family on Ryde Seafront.

FANTASTIC
COMPETITION

WIN A PARADISE HOLIDAY TO BARBADOS & PS5!

Enter our competition and you could win an all expenses paid holiday for two in Barbados and a Playstation 5.

Scan the QR code to enter



SCAN ME



THE ISLAND HAS TALENT 2022



She'll Reign on your Parade

Her Majesty The Queen celebrates her Platinum Jubilee this month — marking 70 years on the throne.



The Queen's formal coronation as Queen Elizabeth II took place on June 2, 1953, in Westminster Abbey, following the death of her father, King George VI.

In 2012, The Queen visited the Isle of Wight on a tour to celebrate her Diamond Jubilee. She arrived in Cowes by boat, where she was greeted by thousands of Islanders all keen to welcome her.

The visit to the Isle of Wight began with a 21-gun salute from the Royal Yacht Squadron, before her majesty and the Duke of Edinburgh walked along the Parade accepting gifts from well-wishers.

Her majesty was treated to a performance from pupils at Cowes Primary, before taking a seat at the RNLI station in Cowes where it was blessed by the Bishop of Portsmouth, Rev. Christopher Foster.

The Royal Party then travelled by boat to Cowes Yacht Haven for the final part of the visit where they were greeted by sea cadets. The Queen was given a hamper of Island produce by chef, Robert Thompson.

She also visited back in May 2004, to mark 100 years since Osborne House opened to the public.

I would like to express my thanks to everyone on the Island for the loyalty and support you have shown over so many years

On her visit, Her Majesty The Queen said: "I am pleased to be able to visit in the one hundredth year of the House being open to the public, and glad to find it is being so well looked after.

"The Isle of Wight clearly has much to be proud of. Our various engagements this morning — seeing the refurbished rooms here at Osborne House, travelling on a restored Steam Railway, visiting a Respite Care Home, and viewing a new yachting facility and an aerospace construction site — illustrate the things that bind us together: the heritage of the past, the values of our present and the shared challenges of the future.

"The Isle of Wight is well known for its hospitality, and the warmth of your welcome is greatly appreciated. I would like to take this opportunity to express my thanks both to you and to everyone on the Island for the loyalty and support you have shown over so many years."

As the Isle of Wight gears up to celebrate 70 years of Her Majesty's reign, we take a look at what's going on around the Island and where.

Jubilee Events

Free Jubilee 'Picnic in the Park' Celebration at Northwood House

Bring some family, friends and a picnic to join in the official free community celebration of the Queen's Platinum Jubilee at Northwood House and Park and Cows on Sunday 5th June from 12pm to 5pm. There will be live music on the Northwood House lawns, as well as a kid's arena with entertainment and activities



**JUNE 5TH
12PM-5PM**

including fun races and dancing. There will be a number of Island charities showcasing themselves too as well as a licensed bar, bbq and tea tent... plus a huge fun dog show with lots of classes, so bring your dog too! Don't forget to dress up in something red, white or blue to mark the occasion.

More information at northwoodhouse.org/events

**PICNIC
IN THE GARDEN.
5TH JUNE. 11AM-3PM.
Ventnor Botanic
Garden.
botanic.co.uk**

**Queen's Platinum Jubilee
Celebration**
Supported by Freshwater Parish Council

**Jubilee Field
Freshwater**

Friday 3rd June 11am - 8pm

**Live Music | Beer Tent
Arts & Crafts | Stalls
Children's Activities
Family Friendly Entertainment**

GROOVERS

**JUBILEE STREET
FAIR AND BEACON
LIGHTING.
2ND JUNE AT 12PM.
High Street,
Bembridge.**



ARRETON BARNES
JOIN US FOR
A WEEKEND OF
JUBILEE CELEBRATIONS

**FREE
ENTRY**

**BOB & CONNIE'S CHILDREN'S
JUBILEE TEA PARTY
SATURDAY 4TH JUNE 10AM - 4PM**

**JUBILEE SHINDIG AT
THE DAIRYMAN'S DAUGHTER
SUNDAY 5TH JUNE 12NOON - 6.30PM**

It's a Jolly Good Jubilee Weekend

**4TH-5TH
JUNE**

Arreton Barns is joining in with a weekend of Jubilee fun on 4th-5th June. Saturday is aimed firmly at families. Join Bob the Cob and Connie Corn from 10am-4pm. Wander the stalls, play games at the traditional fairground, and get crafty crown making with Anthony from Creaturama. There's also a Jubilee themed treasure trail as well as live music and entertainment. At 1pm there will be a children's tea party with food kindly donated from Asda. Entry is free but all money raised will go to Aspire in Ryde, so donations greatly appreciated. On Sunday head to The Dairyman's Daughter for a Jubilee Shindig, with live music and entertainment from noon through to 6.30pm. Live bands include the Isle of Wight pipes and drums and Wight Ukers alongside Morris dancing from the Oyster Girls and Men of Wight. All in aid of raising money for the Isle of Wight Independent Inshore Rescue.



**WHITWELL
PLATINUM JUBILEE
STREET PARTY.
3RD JUNE AT 12PM.
Whitwell
Village**

JUBILEE CELEBRATION

**JUNE 4TH
9AM-6PM
NEWPORT**



GET INVOLVED!
Come and see the fun for free

GRAND PARADE STARTING 3PM FROM RECREATION
GROUND ROAD DOWN TO NEWPORT QUAY

BIG SCREEN SHOWING JUBILEE BROADCASTS
IN ST JAMES SQUARE

PLATFORM ONE PERFORMANCES
IN ST JAMES SQUARE 10AM - 6PM

MARKET IN ST THOMAS SQUARE WITH LOCAL PRODUCERS,
ARTISANS AND BUSINESS OWNERS 9AM - 4PM

STREET ENTERTAINMENT

Contact: regeneration@iow.gov.uk



Lower High Street and St James Square will be closed to vehicles all day, there will be entertainment and performers in the street. Upper High Street will also be closed during the parade.

Queens Jubilee Family Fun Night at The Isle of Wight Community Club

The theme for the evening is 'Through the Decades' with prizes for the best fancy dress. The decades in question are between the 1950s and now to celebrate the long reign of the Queen.



The Cows club has a quiz planned for throughout the evening, music, games for kids, a raffle and the kitchen will be open until 9pm. Quiz starts at 7pm.

**4TH JUNE
6PM**

new carnival

SATURDAY
4TH JUNE
RYDE TOWN
10:30AM–
3:30PM

CELEBRATING THE QUEEN'S PLATINUM JUBILEE

with ONTO THE STREET



Ryde town centre has three prestigious squares – Town Square, Minghella Square and St Thomas's Square – all of which are set to become the focus for a range of high-quality street entertainment. The project was devised by Ryde Business Association to celebrate the Platinum Jubilee by bringing entertainment out onto the streets of Ryde, encouraging the community to visit the town, enjoy the day and explore the local shops and businesses.

The event will see collaborative working between New Carnival, Monkton Arts, Ryde Arts, Riboleau St Studios, Ryde Town Council and Executive Command. Funded by Arts Council England, this will create not only a memorable Jubilee Day, but an event that we can build upon in the future'.

- New Carnival will work with local youth and arts groups to develop community street performances of theatre, carnival, and deliver an exciting range of costume making workshop, arts, and crafts.
- Monkton Arts will develop an arts and craft market to be located in St Thomas's Church Gardens.
- Ryde Arts & Riboleau Street Studios will provide opportunities throughout the day for the community to get involved in pattern making which will go on to be incorporated into a large-scale mural.



- Ryde Town Council will support logistics for the event.
- Executive Command, a local security company, will offer training for volunteer stewards and marshals who will then support all the threads of activity on the day.

We believe that the Jubilee celebrations can provide a unique opportunity to fuse many creative

opportunities together within Ryde to support, and be supported by, the retail sector in the town. The addition of professional street entertainers to the day will ensure that our first 'Onto the Street' event will attract a large diverse audience into Ryde and help set the scene for an annual unique festival unlike any other currently experienced on the Island.

Katy Edmunds from New Carnival said "We see 'Onto the Street' as a great opportunity for many sectors of the town to work together in a way that has not happened before. This collaboration will truly benefit community cohesion in Ryde. We want to bring all our communities back onto the streets of Ryde to support each other, to build new and lasting partnerships and to celebrate all the town has to offer".

Hannah East from Ryde Town Council said "We are delighted to be a partner in this amazing initiative

ONTO THE STREET RYDE

Saturday 4th June 2022

Workshops

Jubilee Flag Making
@ New Carnival, 13b Union
Road, Saturday 4th June
11:00 - 2:45 - DROP-IN

Community Mural

Art Project
Minghella Square
11:00 - 3:00 - DROP-IN
Work produced will be displayed
in Town Square during the Summer

Entertainers

'Elizabeth In Wonderland'

Bespoke Roaming Theatre

**'Back To The Future,
The Next Generation'**

Community Skateboarding
and Dance Performance

12:45 / 1:30 / 3:00 (Town Square)

'Cheeky Monkey'

Circus Act www.circusuncertainty.com

2:00 - 2:30 (Town Square)

Variety of Buskers

St Thomas's Square

ART IN THE GARDEN

A Variety of

Arts & Crafts

market stalls

From a range of

Island makers

St Thomas's Peace

Gardens

Jubilee Finale

Join us for a Jubilee finale to celebrate the Queen's Jubilee
by **Dancing in the Streets.**

Watch one of our many performances in **Town Square** and
stay around for a Ryde Town Celebration starting @ 3:15

To end the day, join Vectis Brass Band @ 3:30 for a
trip down memory lane.

(Minghella Square)



'Onto the Street' and what a fantastic year to kick it off with the Queen's Platinum Jubilee. Not only will it be a fantastic day celebrating the Queen's Jubilee, but it will also be wonderful to see Ryde come alive with street performances"

We believe that by harnessing the excitement of the Platinum Jubilee it will act as a catalyst for change in the perception of the town centre. 'Onto the Street' is so important to us because it will: -

- Provide inspiring training for many of our young people
- Showcase their creative and sporting talents in a public arena
- Offer free high-quality entertainment for everyone to enjoy
- Inspire young people to consider the arts as a viable career path.
- Develop a pool of volunteer trained

stewards who can support the local tourist economy

- Increase income opportunities for artists and artisans
- Support opportunities for different communities to work together for mutual benefit
- Put Ryde firmly on the cultural map
- Offer a range of legacy project ensuring that 'Onto the Street' isn't just one day, but the start of many such days.

Town Ambassadors

We know that the events that are offered in Ryde often struggle to find trained stewards essential for the safety of those events. Whilst this is small part of our project, we see it as vital in that it provides a structured opportunity for the many local people who want to find a route to volunteering, it will ensure the safety of the public at 'Onto the Street' and we aspire to maintain support for this volunteer team to develop some 'Town Ambassadors' as on the street guides and information sharers on busy summer weekends in Ryde. ③

WHAT'S ON

Pre-event PERFORMANCE rehearsal

2nd June. Oakfield Primary School 11am-3pm

New Carnival is looking for a small troop of budding performers to be part of its 'Back to the Future' skateboarding and dance performance.

If you are free on Thursday 2nd June for a rehearsal at Oakfield Primary School as well as the performance day on Saturday 4th June, in Ryde, please contact Gemma Mallinson to register gemma@thenewcarnivalcompany.com

4th June. High Street & Union Street.

Craft Market, St Thomas's Square 10:30am-3:30pm

The Isle of Wight boasts many talented artists and artisans, and the inclusion of an open-air art and craft market will provide many of them a new opportunity not only to sell their wares but also to raise public awareness of themselves as artists. Many of us have witnessed the great success of art and craft markets in town like Lymington, Hay-on-Wye or Keswick and understand that they not only support the producers but that the marketplace is a significant attraction for the town. We hope that these bespoke markets will be present in Ryde on a more regular basis.

Royal Victoria Arcade

Elizabeth in Wonderland at 12pm

New Carnival, 13b Union Road, Ryde

Drop into New Carnival between 11am-2.45pm to make a Jubilee Flag. Free workshop for families. Once your flag is made, why not join the finale celebration, starting in the Town Square at 3:15pm

Cheeky Monkey Circus Act

Town Square 2pm-2:30pm

One Cheeky monkey takes the essence of Covent Garden and brings it 'Onto the Street'. Danger, death defying feats and dodgy jokes you would expect from street hustlers alongside the polish, presentation and pizzazz of the high-end pyro shows. You'll see acrobatics, knife tricks, Flaming Cyr wheel and juggling galore.

Town Square food market and performances

Back to the future! The next generation.

Performance times ● 12:45pm ● 1:30pm ● 3pm

● Finale 3:15pm

New Carnival will be working with young people within the Ryde community to create a 'Back to the Future' style performance. This piece will celebrate 70 years of dance, spanning the Queen's reign, and will integrate dance performance with skateboarding. Working in collaboration with John Cattle's Skate Club to devise a piece that integrates sport (skateboarding) and arts, celebrated in a public arena.

New Carnival invites families and individuals to join them in Town Square at 3:15pm to celebrate the Queen's Jubilee by **Dancing in the Streets.** To end the day, join Vectis Brass Band at 3:30pm for a trip down memory lane in Minghella Square.

Elizabeth in Wonderland: A professional street performance piece.

Original Script written by Charlie Bonner, Roaming performances throughout the day. Based on the idea of 'Mad Hatters Tea Party' linked with the tradition of Royal Street Tea Parties. Physical Theatre, comedy.

Community Art Project; large-scale mural

Community opportunity to get involved in pattern making which will be incorporated into a large-scale mural. Drop-in sessions taking place at Minghella Square between 11am-3pm. Work produced will be displayed in Town Square during the summer.

CORONATION *Celebrations*



Atherley Cross Road during the Coronation in 1953.
Photo courtesy of Elaine Fisher (nee Smith).

Pic above and right, Coronation party in Haylands, Ryde, courtesy of Steven Jones.

Her Majesty The Queen celebrates her Platinum Jubilee this month. The Queen's formal coronation as Queen Elizabeth II took place almost seventy years ago on June 2, 1953, in Westminster Abbey, following the death of her father, King George VI.

The Isle of Wight lined the streets with flags and came out in their thousands for street parties, concerts, fayres and sports tournaments, to mark the historic event. ³



Coronation Day in St James' Square, Newport.



Arthur Street, Ryde, Coronation party held on the 2nd June 1953. Photo courtesy of Derek Tomlinson.



1953 Coronation Party Vectis Road, East Cowes.
Photo courtesy of Eric Mew.



Wadham & Sons shop front in St James Sq, Newport, decorated for the Coronation in 1953.

The Isle of Wight lined the streets with flags and came out in their thousands

Entertainment GUIDE

Visit iwbeacon.com to see our full events guide

Red Hot Chilli Pipers In Support of Aspire Ryde

An evening gala festival of fun and music, with The Scots Guards Association and White Rose Highland Dancers.

Red Hot Chilli Pipers: Headline sensation Red Hot Chilli Pipers re-wrote the rule book for rock music. Transforming the sound of bagpipes into BAGROCK. This global

phenomenon is coming to the Isle of Wight for a Gala Summer Concert like nothing the Island has ever seen.

Wight Hot Pipes: The Island's very own Celtic bagpipe rock band

Wight Hot Pipes kicks off the show with their instrumental line up in combination with lead bagpiper Kieron and the sheer talent of lead singer Tori.

Matt Black: The Piano Man: Joining the fun on stage will be the entertainer extraordinaire from Dorset, Matt Black who will dazzle you with his music and bring tears to your eyes with laughter.

robin-hill.com/event/red-hot-chilli-pipers-summer-gala-concert



23RD JULY
6PM
ROBIN HILL
COUNTRY
PARK

Rhythmtree Festival

Rhythmtree is back for its 10th show at their new site on Sticelett Farm, Thorness Bay on the 8th to the 10th July. Headliners Turin Brakes, The Wailers and The Fatback Band will be supported by over 120 live acts, a vibrant carnival, workshops and activities for the family. **Come on a voyage of discovery and visit rhythmtree.co.uk for tickets.**



8TH-10TH
JULY
STICELETT
FARM

From Hospital Beds To Flower Beds

This year, Ventnor Botanic is celebrating 50 years of garden history. Opening in June 1997 the gardens turned the once hospital site into an open place for all to enjoy.

During the week from the 18th-25th of June, Ventnor Botanic will hold a week of celebration to commemorate its fantastic 50-year history.

Ventnor Botanic will also be hosting two of its popular Donation Days during the celebration week as well! Donation



days make it possible to open the grounds with no admission fees, simply a donation for your visit.

Contact the team to book your visit today. Email marketing@botanic.co.uk

Dash and Splash: A Fun Run In Support of Aspire Ryde

A 5-kilometre dash along the length of Sandown Bay. There are 43 groynes in total to negotiate, most of which are a straight run through large gaps. The remaining 14 will be splashed around,

which at low tide will be mostly ankle deep. Two groynes could be waist deep, these will have marshals in the water. The run starts at Shanklin Rowing Club, and dashes along the beach, under Sandown pier, to finish at Yaverland opposite the Yaverland Sailing Club.

10TH JULY
2PM
SHANKLIN
ROWING
CLUB



Dash & Splash

dashandsplash.org.uk

Lawn Bar reopens for summer weekends

If you've missed it over the last two summers, then where have you been?! The Lawn Bar at Northwood House in Cowes has become one of the most popular outdoor hospitality venues on the Island since it started and will be reopening in time for the Jubilee Weekend on Friday 3rd June, offering the perfect spot for guests to relax and enjoy a drink in its beautiful parkland setting. The bar, renowned for its relaxed Balearic vibe, is open 4-11pm on Fridays, 12-11pm on Saturdays and



12pm to 8pm on Sunday. Look out for guest caterers across the summer and a fantastic selection of wine, cocktail pitchers and beers.
northwoodhouse.org

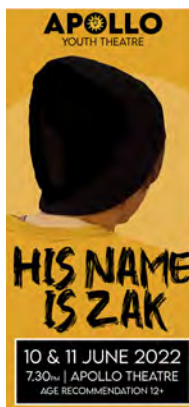
Apollo Theatre

Support local and see great quality performances at The Apollo Theatre!

Coming up: 'His Name is Zak' - Growing up and finding out who you are is hard enough for many teenagers, but for Zak, it was harder than most.

'The Memory of Water' - Shelagh Stephenson's warm and observant drama suggests life is a permanent mix of comedy and tragedy.

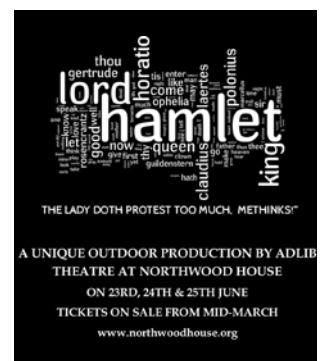
apollo-theatre.org.uk



Adlib Theatre present Hamlet

Don't miss this fantastic opportunity to enjoy a unique interpretation of Shakespeare's Hamlet, performed outdoors in Northwood Park, Cowes by the Island's renowned Adlib Theatre group. This time the famous tragic drama is reimagined and set in the 1930s, in a new and accessible twist on the play. Three evenings performance evenings are available with gates from 5.30pm for a 6.30pm start.

Tickets are available from northwoodhouse.org/events at only £8 per person or £12.50 with a glass of house wine, Pimm's or Mermaid G&T. Early booking advised.





NEWS FROM

COWES MEDINA

by Cllr Lora Peacey-Wilcox

I have attended a number of events where people have spoken to me offering support. Sincere thanks for your continued care and concern.

PHARMACY: I know a number of you have contacted me over issues getting prescriptions. I was contacted by a helpful resident asking what she could do. Between us we are trying to overcome the issues, including working with the Clinical Commissioning Group and medical centre.

STRUGGLING: As the months go by people will be struggling more and more, with finances, food, depression, ill health. Please get in touch if you know of someone that needs intervention. I have lots of contacts to help people.

DISABILITY: Know of adults over 18 with learning disabilities, looking for work or activities? Please ask them to attend Holyrood Hall, 70 High St. Newport. Wednesday 1st June. 10-12noon. Lots of ideas for training, preparing for work, opportunities, support.

RECYCLING! "As the saying

goes 'one man's trash is another man's treasure'. That quirky piece of furniture, with a little love and a fresh coat of paint can be turned into something modern or donated to support a charity here on the island."

Items that can be put to good use include household decorations, furniture or working electricals. They should be in a useable condition, and any furniture such as sofas, armchairs, or settee's need to have their fire safety certificates attached.

To book a free household collection for re-useable items visit www.iwight.com/waste or contact the waste services on (01983) 823777.

GUNS/TROPHIES OF WAR, AIR GUNS BB GUNS, AMMUNITION: The police is holding a two-week Firearms Surrender of firearms and ammunition starting between Thursday 12th May through to Sunday 29th May 2022.

☎ 645765 📧 lora08@sky.com

Community Pantry Opens in East Cowes

By Dominic Kureen

Struggling families are being invited to join the Island's first community pantry where 'members' can enjoy an array of produce to keep their kitchens stocked up.

The food pantry runs every Tuesday from 1.30-3.30pm, and every Wednesday and Thursday from 10.30am until 12.30pm at Community Spirited Cafe in Vectis Road, East Cowes.

The pantry aims to give those in need of a helping hand by providing food at a lower price than can be found in supermarkets on a weekly basis.

Access to the pantry is by way of membership, and for a weekly contribution of £5, members receive food to a significantly higher value.

Since its launch, 44 residents have signed up.

The IW Council is coordinating the scheme through its successful connect4communities programme, with



funding from the Department for Work and Pensions.

Jane Allchom, manager of the Community Spirited Cafe, said: "When the council approached me about the funding available I knew the pantry would be a much-needed benefit for our community."

"We are affectionately known as the heart in East Cowes; the pantry is another addition to the many care and supportive services we offer."

"With the funding we have managed to employ one of our volunteers, which is such a lovely feeling."

Two other pantries at Oakfield Primary School, Ryde, and Baby Box in Ventnor are on track to open soon.

Organisations interested in opening a community pantry on the Island should contact Laura Hale by email at connect4communities@iow.gov.uk or phone 821000. Further details and an application form can also be found online.

Parking Charged Reintroduced at St Mary's Hospital

The Isle of Wight NHS Trust is reintroducing car parking charges for patients and visitors from Wednesday June 1.

It marks the end of UK Government support for NHS Trusts, which saw funding provided for free parking staff, patients and visitors.

Joe Smyth, Chief Operating Officer and Director of Estates, said: "Charges are being reintroduced to support the security service and maintenance of our car parks. However, we will continue to have concessions in place for frequent users of the hospital."

"This will include regular visitors being able to park for free if their loved one is in our care for more than four weeks."

Daily parking at the site



ranges from £1.40 for up to two hours to £6.50 for the day, with tickets being purchased at the pay-and-display machines or by phone.

For long stay patients and people with regular appointments at the outpatients department, concessions are available.

Parking information can be found on the website. Buses 1, 51 and 57 stop on Parkhurst Road outside St. Mary's Hospital and bike storage is also available.



**INTRODUCTION
OFFER
10%
OFF BANNERS
QUOTE RAVEN10**



**WIDE FORMAT
BANNERS
POSTERS
CANVAS PRINTS
DIGITAL WALLPAPER
VINYL STICKERS**



**DIGITAL PRINTING
LEAFLETS
BUSINESS CARDS
NCR
BOOKLETS
STATIONERY**

www.ravenprint.co.uk
studio@ravenprint.co.uk
01983 529044



Stay onboard HMS Bond

By Jamie White

The Isle of Wight has a new place to stay — a submarine replica, originally used in the James Bond film, *The World Is Not Enough*.

HMS Bond is a copy of a Soviet Victor III class nuclear-powered submarine and is based at Windmill Campersite, near Carisbrooke Castle.

The family-run site is already one of the quirkiest glamping sites in the UK and the new sub puts the Island firmly on the map for one-off experiences — complimenting the Falklands helicopter, shepherds' huts, a dairy cottage and a spit-screen VW Camper.

Rhys Dungey co-runs the site with dad, Stew.

He said: "Every year we like to add something new or improve our site and we decided that a submarine would be the perfect partner to the infamous Galahad - our Westland Wessex Helicopter. I scoured the web in search of a suitable submarine and after many months I located what we would finally name HMS Bond.

"The final design is down to Stew and his creative flair — with ideas often coming to him in the middle of the night - and purchases on eBay to finish HMS Bond with the authentic details which Windmill Campersite is known for! We're looking forward to welcoming visitors over from the mainland as well as Islanders to our unique site."

The teardrop-shaped submarine, which cost Rhys and Stew around £40,000 to convert

into accommodation.

It features two double beds and a single bunk, sleeping five people. Like the real submarine, it has little headroom, but loads of character. It is equipped with trap doors, ladders, an interactive dashboard and a periscope.

Renovation began took place over the winter months of 2021-2022. The team at Windmill Campersite stripped out galvanised buoyancy tanks, miles of hydraulic hoses and an ingenious feature

which enabled the huge replica to float and drive in the film. The team then worked with Kingswell Heavy Haulage to move the submarine to the site.

Once in situ, the team worked night and day to complete the conversion for launch this spring. This involved adding a mobile container now named 'The Dock', which houses the canteen and washing facilities including a kitchen, shower, toilet, eating area and doors out to the patio.

The site itself has views of the Bowcombe valley, walks through the Clatterford streams and Carisbrooke Castle is nearby. Communal amenities onsite include a BBQ with pizza and baked potato oven, a firepit for toasting marshmallows, a large dining area and a silent disco hut.



NEWS FROM

CENTRAL NEWPORT

by Cllr Julie Jones-Evans

Shaping Newport working with Market Days were successful in receiving funding from the National Lottery, Newport and Carisbrooke Community Council, High Street Heritage Action Zone and staff time from both IWC and NCCC. This has helped fund flags, bunting, market entertainment, street closures, insurance, licences and so on. It's been 6 months of work and I'd like to thank each and everyone who's made it happen. Businesses have done fabulous windows displays and hanging baskets throughout the town have also been organised by Newport Business Association.

Shaping Newport has a new gardening competition. Open to residents, schools, community groups and businesses across Newport and Carisbrooke. The theme is the Platinum Jubilee, so extra points will be awarded to displays with lots of red, white, blue and purple.

Categories are:

- Best Garden
- Best Indoor Garden
- Best Container
- Best Allotment/Edible Garden
- Best Young Gardener (U16)

- Best Attraction in Bloom
- Best Business in Bloom

The entry process is simple - take a picture and send to regeneration@iow.gov.uk with the following information:

- Your name
- Your address
- Telephone number
- Which category you are entering
- Whether the garden is visible to the public

The competition will be open for entries until Friday 22nd July 2022 and winners will be announced soon after this.

We have costs regarding how much it would be to install and running costs of a post office. Once that has been looked at properly we can get a business case together. Councils are not allowed to run a post office so we will have to look at another way to deliver it and a funding pot. Not easy but we will keep going to work to return the post office to Newport.

☎ 521068/ 07886437688

✉ julie.jones-evans@iow.gov.uk

SCHOOL LEAVERS

FREE TASTER DAY

SCIENCE. TECHNOLOGY. ENGINEERING. DIGITAL

DISCOVER YOUR FUTURE CAREER

NOT SURE WHAT TO DO WHEN YOU LEAVE SCHOOL?

THE CENTRE OF EXCELLENCE FOR COMPOSITES, ADVANCED
MANUFACTURING AND MARINE (CECamm) IS OFFERING YOU
FREE TASTER SESSIONS THIS MONTH! EXPLORE ELECTRONICS AND
COMPUTER AIDED DESIGN IN TWO FREE DEDICATED SESSIONS!

4PM - 6PM 14TH JUNE 2022

cecammm

WHIPPINGHAM TECHNOLOGY PARK, WHIPPINGHAM,
ISLE OF WIGHT, PO32 6FY

www.cecammm.co.uk



NEWS FROM

COWES WEST & GURNARD

by Cllr Paul Fuller

COWES COMMUNITY BUS: The Community Bus Forum are seeking volunteers to drive their fleet of Buses. If interested, let me know!

BATTERIES: Small Batteries (AA, AAA, watch batteries, square batteries, old rechargeable batteries) can be collected by Amey within general black bin collections. The IW Council advises to keep these separate from general waste, and should be left on top of your bin collection in a small sized clear sandwich sized bag.

ENVIRONMENTAL DESIGNATIONS: To view online local Environmental and other designations please visit: <https://iwc.maps.arcgis.com/apps/webappviewer/index.html?id=82005f28da7f4f618baf03369b97ac47>

FIREWORKS: With the summer fast approaching please if you are having a firework party, let your neighbours know as fireworks can scare pets. From experience, if you really must have such a party a note to neighbours can help mitigate anguish.

BEACHBUOY: OUTFALL UPDATES FROM SOUTHERN WATER: Beachbuoy provides near real-time information about releases of stormwater or wastewater. On this

interactive, online map you can see updates about releases from combined sewer overflows. For details please visit: <https://www.southernwater.co.uk/water-for-life/our-bathing-waters/beachbuoy>

NEW BENCHES: GURNARD: With Levelling Up funding from Government, new benches have been located opposite the beach huts. Although welcomed by many, following some concerns raised by hut owners Gurnard Parish Council are reviewing and monitoring concerns with some owners, and will revisit feedback after the summer.

JET SKI'S: A bye-law exists which prohibits all 'personal watercraft' being used faster than 8 knots and in depths of less than 2 metres. Report incidents to: <https://www.hampshire.police.uk/ro/report/ocr/af/how-to-report-a-crime/>

LOCAL SHOPS AND TRADERS: With Covid still resonating, it is inevitable that our towns will continue to evolve, for this reason it remains so important to support local shops and traders so that our towns and villages can prosper.

☎ 289595/07935 090 835
✉ paulfulleriw@gmail.com

Dance School Beats Tough Competition To Win Prestigious National Award

An Isle of Wight dance school has received a prestigious award, following a dance competition which took place in Kent last month.

The Starlight Academy took 31 dancers over to Starz UK, where they competed against dancers from across the country in categories including ballet, jazz, lyrical, commercial and contemporary dance.

The popular dance school, which is based at Newport Business Park, scored top points collectively — and took away a trophy taller than some of its youngest members.

The Starlight Academy Show Team is made up of 33 members, from six to 17 years old — and is fronted by dance teacher, Mary Bowdery, who has been teaching on the Island for 10 years.

The dancers took part in a number of solo, duet, trio and group dances across the weekend, many of whom took home trophies for first or second place.

The award for top scoring dance school was awarded to The Starlight



Academy for having the highest combined score out of 25 dances.

The team compete around the country throughout the year, and were thrilled to achieve such a distinguished accolade — beating some very tough competition. A total of 13 dance schools attended the event.

Mary Bowdery said: "I couldn't believe it when they announced our name. The standard was so high, so to beat off such tough competition was an amazing compliment to our school and something myself and the dancers are all very proud of."

"The students have worked so hard and are so deserving. I'm truly proud of each one of them, and can't wait to get back in the studio to start working on our next event."

Net-Zero Holiday Village Could Come to Gurnard

By Louise Hill, LDR

Plans for what is claimed to be one of the first net-zero holiday villages in the UK have been unveiled for Gurnard.

A development of 40 eco lodges and an eco-cafe at Gurnard Green, has been proposed by ZED Eco Homes, for a field next to Gurnard Pines.

A public meeting was held in May for residents to find out more.

The energy-efficient holiday lodges would each have two bedrooms and an electric car charger.

They would also be equipped with integrated solar panels, which are said to have the capability to generate enough electricity to meet the unit's demands, with enough surplus to power a small electric



Picture by ZED

*"We don't just sell hearing aids,
we provide total hearing care"*

Wight Sound Hearing

Registered Healthcare Professional
Colin Stockdale RHAD MSHAA AIHHP (Executive Member)

12 High Street, Shanklin PO37 6LB
Tel 01983 86 59 59

All Hearing Tests and Consultations are FREE

Latest Digital Testing & Fitting Equipment

Video Oscope (see inside your own ear)

Try Before You Buy OR RENT a Digital
Hearing Aid (from £1 A DAY)

EVERY Brand of Hearing Aid
Available in the UK

Free
Home Visits

Easy Payment Plans

Traders Market Comes to East Cowes Town Hall

By Oliver Dyer

A traders new market is coming to East Cowes, in a bid to boost Isle of Wight businesses and the community.

Market Days CIC is working in partnership with the East Cowes Town Council to bring the market to the newly-refurbished Town Hall in York Avenue.

The Italianate-style Victorian building, built in 1897, will host to a range of craft stalls and makers every month, starting on May 14.

In addition to the market the Island Busking Collective is arranging for street performance and busking around the town to bring added atmosphere and vibrancy.

Tracy Reardon, Chair of East Cowes Town Council said: "We are delighted to be backing this market in the gorgeous Town Hall Building. This market will help bring the community together and make use of the wonderful asset that is at

the heart of the town.

"We are really looking forward to meeting all the local producers and makers and welcoming islanders to the new indoor market."

Claire Kennard, Director of Market Days CIC said: "Market Days CIC was set up to revive markets in Newport and the Isle of Wight and we are really happy to be working with the East Cowes Town Council who have been so incredibly supportive and proactive in bringing this idea to fruition.

"This will be our first regular market outside of Newport. We believe that markets are so much more than just a place to shop, they are full of life and connection and vibrancy where you can directly support your local producers and makers.



car around 5,000 miles a year.

While the lodges would be connected to mains power, ZED says they would only take power from the mains in the deepest of winter or at peak times when demand is unusually high.

ZED say the pre-fabricated lodges are designed to last a minimum of three generations but can be easily moved, leaving no permanent impact on the site and having a net-zero carbon footprint.

The eco-cafe will also house two single apartments, one for a caretaker and the other as a holiday let.

Access to the site will be via Cockleton Lane but the lodges would be screened from the road and

Gurnard Pines by the existing woodland.

A public meeting was held to discuss the development and a forthcoming planning application, on May 31, at Gurnard Pines.

It included a talk from Bill Duster, the lead of the ZED Power architectural team.

The ZED spokesperson said more information about the development was given at the meeting and wanted people to be involved.

If the application was favourably received, they said, a planning application could be submitted within a month but feedback from local residents would be taken on board so changes could be made.

Mental Health Podcast Gains Global Following

An Isle of Wight based podcast — which aims to normalise conversations about mental health — is set to launch a second series, following the success of its first.

Island Minds is co-hosted by Hannah Brewer and Tia Jackson, who say stigma, judgment and misconceptions are still widely prevalent when it comes to mental-ill health. A fact that can stand in the way of people seeking help.

The first series was well received across the world, with a total of 900 downloads over 18 countries.

Hannah and Tia said:

"It's important to re-iterate that we do not exist to offer unqualified advice (we do signpost to the relevant healthcare professionals).



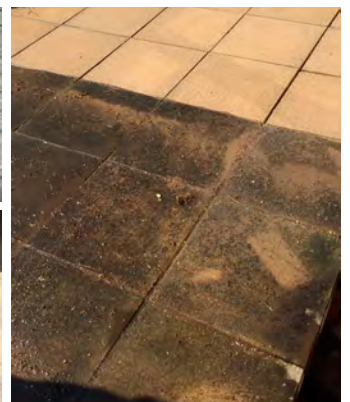
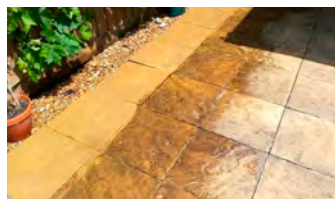
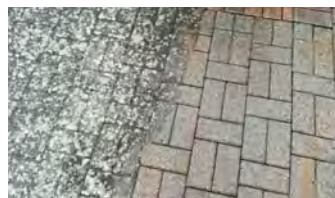
The podcast simply exists to give individuals a platform to share their experiences with the aim to help reduce stigmatised views.

"Since the pandemic more and more people are aware of mental ill-health but there is still a huge stigma problem. Stigma often prevents them from reaching out and seeking help."

Series one is available on all major streaming platforms such as Spotify, Apple, Amazon, Google, Youtube and Podbean. You can also find Island Minds on Instagram, Facebook and Twitter.

Soda

Outdoor Hard Surface Cleaning & Refurbishment



Soda specializes in outdoor cleaning such as car parks, driveways, patios/pathways, decking and walls. **We do not use chemicals, just clean water with high pressure rotary surface cleaners.**

Tel: 01983 840417

Email: iansummers6048@gmail.co.uk

www.sodacleaning.com

Ester's Foot Health Clinic

Professional foot health treatments in your home.

- Nail cut and file • Cracked Heels • Removal of Corns and Callus • Thickened Nails • Ingrowing Nails
- Diabetic Foot Care • Reflexology massage



ESTER CAMPBELL-HUNTER BSc. DipCFHP, MPSPract ITEC Dip
Fully Insured. Member of the Accredited Registry of Foot Health Practitioners

Tel: 07789750307 Email: esterhunter@gmail.com

SCHOOL LEAVERS

FREE TASTER DAY

SCIENCE. TECHNOLOGY. ENGINEERING. DIGITAL

DISCOVER YOUR FUTURE CAREER

NOT SURE WHAT TO DO WHEN YOU LEAVE SCHOOL?

THE CENTRE OF EXCELLENCE FOR COMPOSITES, ADVANCED MANUFACTURING AND MARINE (CECamm) IS OFFERING YOU FREE TASTER SESSIONS THIS MONTH! EXPLORE VIRTUAL WELDING AND HAND FITTING WORKING DEVICES IN TWO FREE DEDICATED SESSIONS!

4PM - 6PM 28TH JUNE 2022

cecamm

WHIPPINGHAM TECHNOLOGY PARK, WHIPPINGHAM
ISLE OF WIGHT, PO32 6FY

www.cecamm.co.uk



Finding Forever Families

Adoption can change lives for the better



Give siblings the life they deserve

- Single or a couple • LGBT+
- Already a family • Disabled
- Receiving benefits
- Renting or own your home

Welcome to Adopt South

Right now, we have toddlers, siblings and children with disabilities who need a family of their own to be loved and cherished.

The Regional Adoption Agency for Hampshire, Isle of Wight, Portsmouth and Southampton Local Authorities



Call our friendly team about starting your adoption journey today.

0300 3000 011 • adoptsouth.org.uk





— | LEGAL & FINANCIAL | —

No-Fault Divorce

The introduction of no-fault divorce represents the biggest shake up in divorce law in over half a century and finally puts an end to the 'blame game'.

On 6th April 2022, the law changed and a new no-fault divorce process was introduced. Under the old process, to be granted a divorce, one spouse was expected to prove their marriage had “irretrievably broken down” by demonstrating one of the following five facts: (1) adultery (2) unreasonable behaviour (3) two years separation with consent (4) five years separation (5) desertion. This means that unless a couple were prepared to face years of separation, one spouse was forced to accuse the other of adultery or unreasonable behaviour.

The end of any relationship can be distressing regardless of the reason and assigning blame at a time when emotions are already running high only made the process more acrimonious. It also diverted attention away from the important financial and child related issues arising from the divorce and parties became less willing to engage in meaningful

negotiations as a result.

Given that the grounds for divorce have no impact, except in very limited circumstances, on the outcome of any financial settlement or the arrangements for any children, assigning blame was an archaic and counterproductive requirement.

Under the new no-fault divorce process, couples will no longer have to put forward any reasons for the divorce and ticking a box confirming that the marriage has “irretrievably broken down” is now proof enough. Proceedings can be commenced straight away without making allegations of unreasonable behaviour or adultery, and without waiting for any periods of separation. The divorce can even be applied for jointly, which better represents that it is often a mutual decision. Further, if you apply for divorce alone, no consent to the divorce is required from the other party and it cannot be defended. The new process is however slightly longer as it

will not be completed in less than 26 weeks.

These changes aim to make divorce a more amicable process for separating couples. It is hopeful that such changes will reduce conflict and promote healthy post-divorce relationships from the start, particularly to the benefit of any children from the marriage.

Although the new process is still in its infancy, it has been positively welcomed by all. It appears that, by stepping away from the blame game that has always been associated with divorce, the law is finally starting to catch up with modern attitudes towards separation and family life.

No-fault divorce has enabled couples to now re-focus their energy and resources on those important issues such as the distribution of matrimonial finances. These arrangements still remain an obstacle to overcome in the divorce process as they are often complex and benefit from the advice of a specialist family lawyer. ☺



AGED OVER 55? - EVER THOUGHT ABOUT A LIFETIME MORTGAGE?

WHAT IS IT?

A lifetime mortgage let's homeowners aged 55+ to take cash from the value of their home to use in retirement. The money can be used how they wish, for example for:

- Home improvements.
- Holiday away.
- Financially supporting grandchildren.

You borrow some of your home's value as a lump sum or alternatively as small regular amounts. It is essentially an interest only mortgage, fixed for life, which does not require monthly repayments, until you die/move into long term care. Some providers offer an inheritance guarantee, which ensures you can leave an inheritance.

WHAT ARE THE BENEFITS?

- Tax free cash.
- Flexible monthly payments or no monthly payment option.
- No requirement to downsize.
- Draw down facility options.
- Early repayment options.
- No negative equity guarantee.



GET IN TOUCH TO SEE IF A LIFETIME MORTGAGE COULD WORK FOR YOU.



(0) 1983 616666

www.prospectmortgage.co.uk
info@prospectmortgage.co.uk

Prospect Mortgage Services Ltd are authorised and regulated by the Financial Conduct Authority 647962. Prospect Mortgage Services is not responsible for, nor does the Financial Conduct Authority regulate advice given with regard to taxation matters. Your home may be repossessed if you cannot keep up the repayments on any mortgage or other loan secured upon it.



Direct Cremation Specialists based here on the Isle of Wight for the Isle of Wight
The Island's only Independent Funeral Directors who are dedicated to this style of service
Affordable Direct Cremations. Separate the Cremation from the Celebration.

We pride ourselves by offering great value for money without any compromise on the care given to you and your loved ones.

We are proud to be the longest service Island Independent Family Funeral Directors.



Direct cremations from £1,495
Funeral Plans from £1,750

Call 01983 632598 info@isleofwightdirectcremation.co.uk
www.isleofwightdirectcremation.co.uk

What is direct cremation?

Quite simply, it is an alternative to a traditional funeral. The cremation takes place unattended, giving you the freedom to celebrate your loved one at a time, place and venue of your choice.

How much does a direct cremation cost?

We have 2 options to choose from:-

1. Our 'Island Way' is £1,695.00 - this is for the direct cremation at the Isle of Wight Crematorium
2. Our 'Wessex Way' is £1,495.00 this is for a direct cremation at a mainland crematorium

We offer this option for families who would like to take advantage of savings that mainland crematoriums offer.

Can I get help with the costs?

Yes, if you are in receipt of benefits you may be entitled to a payment of up to £1,000 from the Department of Work and Pensions, so we advise contacting them to enquire.

What is the difference between Isle of Wight Cremation and a mainland provider?

We are based here on the Island, we can take your loved one into our care promptly and without the distressing delay of travelling over on the ferries.

We can meet you face to face at our Island offices. Or make all arrangements over the telephone.

Whereas mainland providers often courier the ashes back, we provide a more personal service by hand delivering them to you at your home, or you can come in and collect them at either of our offices. We are locals and understand our local community.

Do you offer prepaid direct cremation funeral plans?

Yes, we do and we use Golden Charter, the UK's market leader for providing prepaid funeral plans to Independent Funeral Directors. Your funds are safe and placed into the Golden Charter Trust. Recently we were awarded by Golden Charter as the best funeral planner for 2020 in the Southern England Region.

Enjoy your conservatory all year round

**2 FREE
PANELS**

*Quote Ref
BEACON0722

• **WARMER IN WINTER** • **COOLER IN SUMMER**

"It's the best home improvement we have ever made. Our conservatory is now our dining room in the garden."

Mike Millis, Middleton On Sea

Our lightweight insulated panels make your conservatory:

- **Warmer** in winter • **Cooler** in summer • **Reduce** bills
- **Quieter** in bad weather • Installed in less than a day

To find out more about the benefits that the Green Space system can offer and see if your conservatory is suitable for any potential subsidies, contact us now.



0800 08 03 202
www.greenspaceconservatories.co.uk

GRAND
DESIGNS LIVE

ideal
HOME SHOW

8k⁺ HAPPY
CLIENTS



Terms and Conditions apply.
Green Space UK, Unit 8 BH24 1PD, Registered
No. 8542786, as shown on FCA authorisation,
trading as Green Space UK, is a credit broker
and is authorised and regulated by the Financial
Conduct Authority. Applies to orders of 8 panels
or more. Not to be used in conjunction with any
other marketing offer



SHADY CHARACTERS

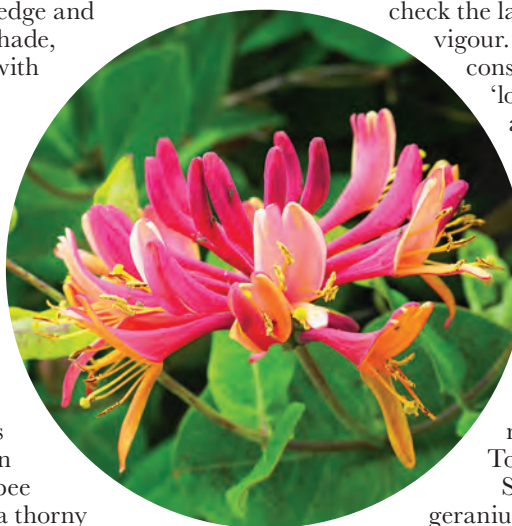
Got a shady garden? Assume you can't grow anything interesting? Not so, says Flo Whitaker. Many plants prefer life in the shade.

So long as they're sheltered from the worst weather, hydrangeas revel in damp, light shade. Climbing *Hydrangea petiolaris* will disguise an unappealing wall and offers a long season of interest, with crisp white flowers in early summer, good autumn leaf colour and self-clinging, (non-invasive!) cinnamon-coloured stems.

Honeysuckles are natural woodland dwellers that enjoy life on the shady side and the vast clematis family contains a few shade-tolerant types, including the long-lived, hard-working 'Elizabeth' – an appropriate planting choice to commemorate this Jubilee year.

For neatly clipped hedges and

topiary, nothing beats Yew, (*Taxus*) or Box, (*Buxus*), particularly in confined spaces. Tiny-leaved *Lonicera nitida* makes a dense hedge and thrives in deep shade, but grows stout with age, so requires more room. *Euonymus* comes in many forms, including silvery and golden variegated types that will illuminate gloomy areas. *Berberis*, with its tiny, nectar-laden flowers is a real bee magnet. This is a thorny plant, best kept away from pathways and suchlike, but it can be loosely clipped to make a good security or vandal-proof hedge.



Hollies, (*Ilex*) endure most situations but prefer slight shade. Some can potentially become very large, so check the label for height and vigour. If space is limited, consider a standard 'lollipop' specimen in a large pot. Hollies often require another holly nearby to cross-pollinate and produce berries, however, there are self-fertile forms available, including the excellent and reliable 'J.C. van Tol'.

Some hardy geraniums revel in light shade. 'Rozanne' and 'Orion' make large, vigorous clumps, whereas *Geranium phaeum* quietly

Shady stalwarts such as violas, fuchsias and busy lizzies are hard to beat





creeps through the border and bears dainty flowers in gothic purplish shades.

For containers and bedding plants, shady stalwarts such as violas, fuchsias and busy lizzies, (*Impatiens*) are hard to beat. Small-leaved ivies (*Hedera*), can be trained over pot edges or through wire frames to make topiary shapes. Lilies can take a surprising amount of shade and springtime bulbs such as snowdrops, (*Galanthus*), cyclamen and wood anemones positively revel in it.

Narcissi enjoy sunny locations, but, in gardening, there are always exceptions to the rules. Narcissi 'Sailboat' has multi-headed blooms in pale yellow and white and much prefers dappled shade. Another shade-

loving rule-breaker is *Pelargonium tormentosum*, which produces furry scented leaves and masses of tiny white flowers throughout summer. It's not frost-hardy, so overwinter in a greenhouse or conservatory. It propagates easily from cuttings in spring, as does *plectranthus* 'Nico'. Semi-trailing in habit, Nico's handsome leaves have vivid beetroot red

undersides; perfect for teaming up with ferns and hostas. And don't forget that old faithful, the spider plant, (*Chlorophytum*) which, like *plectranthus*, bleaches horribly in direct sunlight, but keeps its colours in light shade. A spider plant looks brilliant in a hanging basket and is a good summertime 'project' for a young, novice gardener. ☺



“
Berberis, with its tiny, nectar-laden flowers is a real bee magnet
”



YOUNG
PLUMBING
PLUMBING & HEATING SERVICES

Tel: 01983 339671
Mb: 07967 225030

www.YoungPlumbing.co.uk

ACER
RECLAMATION

WANTED: Red & Yellow Bricks,
Floorboards, Flagstone, Welsh Slate,
Chimney Pots & Stained Glass.

Call: 01983 565761
or 07973 745428
www.acerreclaimed.co.uk

Mark Carter
Oil and Gas Engineer

Worcester Bosch Accredited Installer
Serving the West Wight and Cowes area

Tel: 619111 Mobile: 07771 557769

Gas Safe
Registered 28450

Oftec Oil
Registered C12814

Boilers Installed, Serviced & Repaired ✓
Heating system repairs and upgrades ✓
Landlord Gas Certificates issued ✓
Agas & Rayburn Serviced ✓
Swimming Pool Boiler Services ✓
Fires, Cookers, Hobs & Ranges installed ✓
Power Flushes and system Cleanses ✓
Pre purchase House Inspection ✓
If it uses gas we can fix or replace it ✓
Natural Gas & LPG & oil ✓

STUDIOPHASE

The Isle of Wight's local TV experts
Call 404406 studiophase.com

Why choose us?
• CAI approved • Friendly, reliable engineers
• We have over 30 years of local knowledge

Freeview
freesat
sky cai

Island Repointing

Natural Stone & Brick
Masonry Waterproofing & Brick Replacement
Damp Proof Course Installation & Cavity Clearance
Vacuum Grinding
Islandwide Coverage

Tel: 01983 531461 or 07715 397896

Coastal Mobility

THE ISLANDS PREMIER MOBILITY SPECIALISTS

ALSO: WHEELCHAIRS • BATH LIFTS • WALKERS • ADJUSTABLE BEDS & CHAIRS • ACCESSORIES

SHANKLIN Tel: 866431
56 REGENT STREET

NEWPORT Tel: 533500
9 ST THOMAS SQUARE

FREE ISLAND WIDE DELIVERY!
Great deals on mobility scooters
and lift and recline chairs

The Island's
**CARPET & FLOORING
SUPERSTORE**

D&S
CARPETS

OPEN 7 DAYS A WEEK
MON - FRI 9AM - 6PM
SAT 9AM - 5PM
SUN 10AM - 4PM
01983 533150

12 Hurstake Rd, Riverway Industrial Estate,
Newport, Isle of Wight, PO30 5UU

**NO DEPOSIT
INTEREST FREE
CREDIT**

Subject to status on orders over £495
Excludes fitting charges

Credit subject to status and affordability. Terms & Conditions Apply. D&S Carpets is a credit broker and is Authorised and Regulated by the Financial Conduct Authority. Credit is provided by Novuna Personal Finance, a trading style of Mitsubishi HC Capital UK PLC, authorised and regulated by the Financial Conduct Authority. Financial Services Register no. 704348. The register can be accessed through <http://www.fca.org.uk>

www.dscarpets.co.uk

Rugs Luxury Vinyl Tiles Wood & Natural Flooring Vinyls Carpets

isle of wight radio

TOPPING IN THE MORNING



ST HELENS SERVICE STATION

ALL MAKES SERVICE & DIAGNOSTICS

Factory level diagnostics & services for BMW, Volvo, Peugeot, Citroen and Renault
Genuine parts supplied for Jaguar, Land Rover and Porsche



VOLKSWAGEN • PEUGEOT • RENAULT • CITROEN • BMW • MERCEDES



MOTs AVAILABLE FOR ALL
MAKES & MODELS

Embankment Road, Bembridge PO35 5NS. Tel. 01983 872332 or 07920 224181

WIN! Can you spot the differences?



COMPETITION

STUBBINGS BROS
meeting your machinery needs

Chale Green, Ventnor PO38 2JN
Tel: 01983 551443 Email: contact@stubbings-bros.co.uk
www.stubbings-bros.co.uk



HAYTER
MAKERS OF THE FINEST MOWERS

THIS MONTH'S PRIZES...

TERMS & CONDITIONS APPLY



Pair of tickets from Jack Up Events to Abba Chique
Friday 1st July
Courtesy of jackupevents.co.uk



Pair of Rhythmtree Festival Tickets
8th, 9th, 10th July
Courtesy of rhythmtree.co.uk



Sunday Lunch for two
Courtesy of the Village Inn Bembridge
to be taken on 12th July
01983872616
yeoldevillageinn.co.uk

PRIZE PREFERENCE (CHOOSE ONE ONLY):
1 ☐ 2 ☐ 3 ☐

NAME:

TEL:

ADDRESS:

POSTCODE:

E-MAIL:

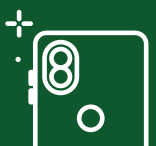
- ☐ I am happy to be contacted by the sponsors for marketing purposes
☐ I would like to receive Beacon Magazine's weekly email newsletter with more competitions

Closing date - 30TH JUNE 2022

Send your entries to: **IW Beacon Competition, 8-10 Dodnor Park, Newport, Isle of Wight, PO30 5XE**
When sending your entry to us you **MUST** ensure that you use the correct postage. Terms and conditions available on request.
Prizes must be claimed within 30 days of the draw date. Previous winners can be found on our Facebook and Twitter pages.
Winners will be contacted by phone.

Did you know...

You can take a photo on your phone and email your entry to win@iwbeacon.com.



SEAT MÓ



The new SEAT MÓ

125

Seamlessly blends agile performance, dynamic looks, and low running costs. 100% electric.

Coming soon.

Register your interest. Call us today or scan the QR code opposite.

Snows SEAT Isle Of Wight

Forest Road, Newport, Isle of Wight, PO30 5QJ

Tel: 01983 535727 www.snows.co.uk/SEAT

