

EAST AND
SOUTH WIGHT

Pick up your FREE copy

Beacon

June 2022

HISTORY
CORONATION
CELEBRATIONS

GARDENS
SHADY
CHARACTERS

WALK
FOLLOW THE
FOOTSTEPS
OF ROYALTY

ISLAND STORY
70 YEARS ON
THE THRONE

Platinum JUBILEE SPECIAL

Fuss-Free 30
Day Contracts

Pay what you see,
leave at any time*

Fibred areas only.



- Unbeatable Value
- Unbeatable Price
- Speed Guarantee
- WiFi Guarantee


wightfibre
because we care

Order online at wightfibre.com
or call 01983 240240

A Different Kind of Broadband Full-fibre • Ultrafast • Future-proof

Summer INSPIRATIONS

Delivering affordable luxury and
over 40 years experience



www.joedan.co.uk

Visit your local Design Centre.

Open Mon - Fri 9am - 5pm • Saturday by appointment only

5 Daish Way • Isle of Wight • PO30 5XB

t: 01983 825055

BOURNEMOUTH | ISLE OF WIGHT | ORPINGTON | TEWKESBURY | WINCHESTER

lusso
ALUMINIUM



JOEDAN
WINDOWS & DOORS



Welcome from the EDITOR

As the nation celebrates the Queen's Platinum Jubilee, we thought it was fitting to make Her Majesty this month's cover star.

No other British monarch has reached this incredible milestone. And what better way for us to celebrate this month, than with community events and street parties, just like the Island did back in 1953 for the Coronation.

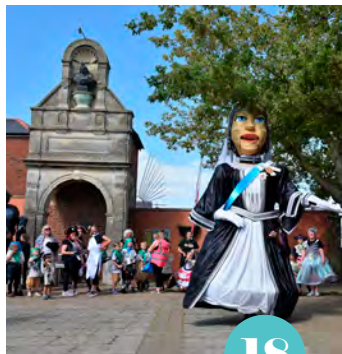
Throughout this edition of Beacon, you can look back at pictures from that iconic day, while finding out how you can make similar memories across the Isle of Wight for the Platinum Jubilee.

We also bring you an Isle of Wight walk which takes you through iconic places visited by Queen Elizabeth II, as well as Queen Victoria before her.

With all that and your usual mix of recipes, gardening and history, there's plenty to read in this month's Beacon Magazine.

Amy Shephard

Editor amy.shephard@iwbeacon.com



- 5** Recipe: Perfect Pulled Pork
- 7** Walking the Island: Follow in the footsteps of royalty
- 9-10** Child of Wight Awards 2022 Winners
- 12** History: Family business celebrates Platinum anniversary
- 16-20** Platinum Jubilee celebrations
- 21** The Entertainment Guide
- 22-27** News from Your Area
- 33-34** Gardening: Shady Characters
- 35** Spot the Difference Competition



Beacon

MAGAZINE

IW Beacon Media Centre, 8-10 Dodnor Park, Newport, PO30 5XE

CALL US
01983 433112

FACEBOOK
iwbeacon

TWITTER
@iwbeaconmag

VISIT US
iwbeacon.com

INSTAGRAM
@beaconiow

EMAIL
hello@iwbeacon.com

totalsensemedia



Shop for locally-made, independent business's crafts and products.



EAST COWES INDOOR MARKET

EAST COWES TOWN HALL
12:30 NOON TO 4:30 P.M.
14TH MAY // 9TH JULY // 20TH AUGUST // 17TH SEPTEMBER //
15TH OCTOBER // 19TH NOVEMBER



FOR MORE INFO VISIT:
WWW.MARKETDAYSIOW.COM OR CHECK OUT
OUR SOCIAL MEDIAS @MARKETDAYSCIC



£100

Joining
Bonus!



Isle of Wight
Pubs

Character Inns are a
collection of six family-owned
and run food-led pubs located
throughout the Island.

Finished School or back from Uni? EARN... GOOD MONEY!



The Bugle Inn
Yarmouth



The Crab & Lobster
Bembridge



The Buddle Inn
Niton



The Sun Inn
Hulverstone



The Kings Head
Yarmouth



The Caulkheads
Sandown



**Bar, Floor &
Kitchen Staff**
£10-£14
PER HOUR

APPLY NOW!

www.characterinns.co.uk/careers

Perfect Pulled Pork



SERVES

8

INGREDIENTS

2.5kg (5lb 8oz) shoulder of pork, bone in
3 tbsp muscovado sugar
2 tbsp salt
1 tbsp smoked paprika
1 tbsp ground cumin
1 tsp chilli powder
1 tbsp garlic powder
Freshly ground black pepper
300ml (10fl oz) beer, cider or apple juice

METHOD

1 In a bowl mix up the sugar, seasoning and spices. If the meat isn't already scored, then using a sharp knife, make scores diagonally across the fat. With a

paper towel, pat the meat dry and rub approximately half the seasoning mix over the meat, rubbing well into the scores. This can be done up to 24 hours in advance of cooking and then refrigerated.

2 Preheat oven to 220°C (200°C Fan, 390°F, Gas 7). Place the joint into a large roasting tin or casserole dish and roast in the hot oven for 25 minutes.

3 Turn the heat down to 160°C (140°C Fan, 320°F, Gas 3). Remove from the oven and pour the beer, cider or apple juice into the base of the roasting tin. Cover with a tight-fitting lid or double thickness foil, ensuring it is fully closed to prevent steam escaping.

4 Cook for 6 hours or until the meat falls apart and pulls easily away

from the bone. Remove the lid or foil, pour off the juices and reserve. Turn the heat back up to 220°C (200°C Fan, 390°F, Gas 7) and cook the pork, uncovered for 15 minutes to crisp up the fat. Take out and allow to rest for 30 minutes.

5 Remove the meat from the bone and using two forks pull the meat into shreds, cutting up the crackling as well for added texture and flavour. Then add the rest of the seasoning and spice mixture and some of the reserved juices and toss together.

6 Serve immediately in soft buns, it should be deliciously succulent and tasty with crunchy coleslaw and barbeque sauce.

This delicious recipe is ideal for al fresco summer parties and it's certain to get the guests chatting; Adele Trathan recommends serving in soft bread rolls, accompanied with barbecue sauce and crunchy coleslaw.

HTP: THE PROFESSIONALS' CHOICE

FOR WORKPLACE TRAINING

- Grow your business
- Keep your staff
- Upskill your team
- Up to 100% funded by government



We work with businesses across the Isle of Wight and the south to deliver high quality staff training to help your business grow.

We know that hiring and retaining good people is a challenge and that keeping staff motivated and valued is really important.

We'll work with you to upskill your team – designing bespoke training packages for your staff, and helping you to access government funding to support your business development.

We have specific training programmes in areas like **Business Administration, Health & Safety, HR, Customer Service, Marketing, Hospitality & Catering**, and much more.

Or why not develop your staff to help them progress into management? **Industry-recognised management qualifications** can make a real impact on your organisation.

Our programmes are flexible and designed to suit your business. Most of the training takes place at work, making 'day release' a thing of the past. And don't forget – for most businesses the government pays at least 95% of the training costs.

Talk to our Business Development Team today about our wide range of work-based qualifications. We can help your business thrive, without hiring new staff and without breaking the bank.

That's why, when it comes to high-quality training, professionals across the Island choose HTP.

UPSKILL YOUR TEAM

Ella Morris at Vestas Blades in Newport

Recently achieved a Level 5 Learning and Development Consultant/Business Partner qualification

Call the team now on 01983 533926 • Email info@htp.ac.uk



The Queen's Diamond Jubilee visit to the Isle of Wight in 2012 began with a 21-gun salute from the Royal Yacht Squadron, before her majesty and the Duke of Edinburgh walked along the Parade accepting gifts from well-wishers.

S Start at the entrance to Ryde Pier and walk west along the Esplanade. Walk along St Thomas' Street and into Buckingham Road. Walk up the hill and then take another turn into Spencer Road.

Walk along Spencer Road until you reach Ladies Walk. Walk through a set of gates and pass through the entrance to Ryde House on your right.

Follow a tarmac path, over a bridge and up the hill until

you pass Binstead Church on your right.

Follow the path to your left before turning into Church Road.

Walk for 50 metres before taking a right turn. Take a path to the left of a gated house and walk through woodland until you get to Quarr Road.

At Quarr Road, turn right and walk until you join a gravel path which leads to the old Abbey at Quarr.

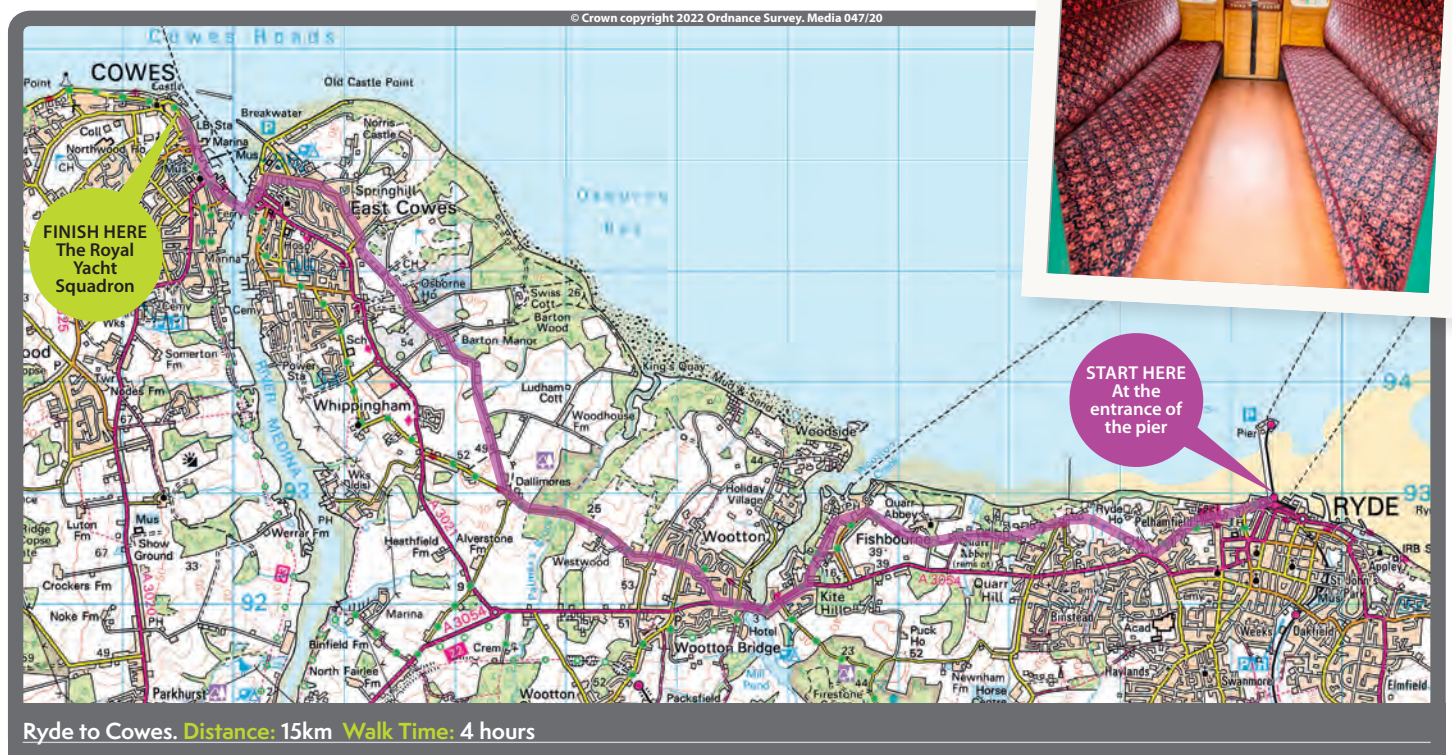
Continue along the route until you pass the entrance to

Quarr Abbey and join the road at Fishbourne Lane.

Take a left, with Wightlink Ferries on your right and turn off at the public footpath labelled R1. This points towards Kite Hill. Walk along the path until you reach a barrier.

Here you should take a left into Ashlake Copse Road and walk until you reach woodland, followed by a footbridge which leads towards the main road. >>>>

Below: Queen Elizabeth II travelled on a restored Steam Railway, during her visit to the Island in 2004. Queen Victoria used the station on at least one occasion, on 11 February 1888, when she travelled from Whippingham to Ventnor and back for the opening of the National Consumption Hospital there.





Osborne House.

Queen Victoria was a frequent visitor to Quarr Abbey House, and her daughter, Princess Beatrice and Prince Henry of Battenburg, honeymooned together there.



Turn right to reach Wootton Bridge. Be careful to walk along safe footpaths as you head toward The Sloop. You'll find a gravel path to New Road. Now take a left next to the old primary school.

Keep walking until you join St Edmunds Walk, before turning left past Whitehead Crescent, then left again until you join Church Road.

Cross into Footways and join Palmers Road. Turn right almost immediately into Brocks Copse Road. Palmers Farm should be on your right.

Cross Palmers Brook via a

bridge and continue on until you join Alverstone Road.

Walk past the Post Office and join the main road. Here you need to turn right and walk along the main road towards East Cowes. You should pass Osborne House on your right.

Walk along York Avenue

to East Cowes town centre. Take a left towards the floating bridge.

Take the floating bridge to Cowes.

Once you're off the floating bridge, walk along Medina Road towards Bridge Road.

Take a right turn into

Birmingham Road and continue on to Shooters Hill.

Join the high street and walk until you reach Bath Road, followed shortly by The Parade.

Head along the parade until you reach The Royal Yacht Squadron, where your walk ends. ③



Ye Olde Village Inn

61 High Street, Bembridge, PO35 5SF | Tel: 01983 872616 | www.yeoldevillageinn.co.uk



7 DAYS A WEEK CURRIES

(Choose from Stig Sharer Deal)

ANY 2 PIZZA & GARLIC BREAD

Authentic Pizzas to choose from
- All 3 for £30.00

MONDAY NIGHTS FREE FUN QUIZ & A PIZZA FOR £10

THURSDAY - SATURDAY 5-6PM

START THE WEEKEND EARLY! BUY 1 GET 1 FREE on selected cocktails

FRIDAY & SATURDAY NIGHTS BANDS INSIDE FUNK DJs OUTSIDE

SUNDAYS 12.30-3PM SUNDAY SOUL SESSIONS LIVE MUSIC & SKA VINYL DJs Alternating weekly



"READ OUR FANTASTIC CUSTOMER REVIEWS

Great Family Food, great roasts,
great service, excellent manager.
A little gem.

I can't fault this place, clean and
comfortable interior, helpful and
pleasant staff.

Lovely lunch, I would definitely
recommend.

Excellent Sunday Lunch.
Very friendly and relaxed.



LAST FRIDAY OF
EVERY MONTH
SILENT
DISCO



INTRODUCING LIVE MUSIC AND ENTERTAINMENT BACK INTO THE OVI FRIDAY AND SATURDAY NIGHTS.

2ND JUNE 12PM STREET FAIR FOR THE QUEENS JUBILEE

We have Fire breathers, Irish dancers,
Wild West show, Marvel characters, 60 stalls,
Community fun, D.J in the garden VI style!
and much much more

ALL YOUR REGULAR FEATURES V.I STYLE PLUS MORE TO COME. WATCH THIS SPACE!



All pictures by Robin Crossley

THE ISLAND'S FAVOURITE...

isleofwightradio CHILD OF WIGHT AWARDS

The Island's young heroes have been crowned at Isle of Wight Radio's Child of Wight Awards 2022.

Friday 13 May saw the event, with headline sponsors WightFibre, return in-person for the first time in two years.

Tapnell Farm Park was the setting this time round, with nominees given the chance to enjoy the fun facilities before celebrations got underway.

The evening also featured performances from Theatretrain and Huxley magic.

Among the winners were an awe-inspiring carer, three fantastic fundraisers and a budding speedway star. The awards were hosted by Breakfast Show hosts Paul Topping and Heather McCallum.
Overall winner sponsored by WightFibre

Born three months early weighing just 500 grams, Hartley Brett has been through more than most people do in a lifetime. He spent nearly the first year of his life in hospitals – and has been back and forth on many occasions since. But his tough start to life hasn't stopped him smiling.

Hartley's sister Lily accompanied Hartley to the ceremony, alongside his aunty Claire who nominated him for the award.

Lily said: "I'm feeling really nice about it [Hartley winning]. We weren't expecting it either!"

Asa Singleton Most Courageous Child Award sponsored by Wightlink

In 2020, Simon Apsey lost his beloved Nanny and Grandad (Ray and Rosemary Scovell) to Covid within weeks of each other. Despite going through a difficult time, he's shown courage and bravery.

He even helped to organise — and perform — in a tribute concert for his grandparents.

Young Carer Award sponsored by Deltron Lifts Coastal

10-year-old Dottie-Rose Wagstaff has been an incredible help to her mother Tracey, who suffers from a degenerative disease.

On the days when her mum is unable to get out of bed, this special little girl will feed her mum's ability dog, clean up around the house, and provide her mum with lots of love and care. She never, ever

complains — and studies hard at school to achieve her dreams.

Fundraiser of the Year Award sponsored by Red Funnel

Between them, Jasmine, Fleur and Obie Woodward have raised an incredible £1,600 for Prostate Cancer UK. They walked 25,000 steps every day through March.

The siblings were inspired to raise funds after their Grandad passed away from the disease a few years ago.

Make a Difference Award sponsored by Utilita

Macie-Edkins Wherry is this year's Make a Difference award winner. The 16-year-old used money from her paper round to buy cards and gifts for care home residents who might not get visits at Christmas and Easter.

She also raised money to help get a mental health and wellbeing room set up at her school.

Best Brother Award sponsored by Caffè Isola

Life hasn't been easy for him of late, but Ronnie Kidd has been strong throughout.





*“It never ceases to amaze me
how remarkable young people
on the Island are”*

At just eight-years-old, he has gone out of his way to look after his big brother, who has a rare condition called Charge Syndrome.

Best Sister Award sponsored by Wonder House Early Learning Centre

“Inspirational” Mya Johnson has helped look after her little brother, who’s been poorly since birth. The six-year-old herself has a genetic condition called Di George Syndrome, but she faces it all with a smile.

Her parents say she is a “very loving big sister and wonderfully well behaved daughter.”

Sporting Star Award sponsored by Richardsons Yacht Services

He may still be young, but budding swimmer Harry Sheppard has already achieved remarkable success.

In February, he was accepted into the Hampshire County Championships for 100 metre Butterfly, winning his heat for the age 16 group.

Best Friend Award sponsored by Esplanade

14-year-old Barney O'Connor has been

helping to care for his brother, who has a learning disability and autism.

He’s been described by his family as “an extraordinary person who is always selfless and accepting.”

Top Performer Award sponsored by Snows

This year’s Top Performer is used to the stage. Chloe Neale trains day and night in ballet, tap, modern dance, acrobatics, singing and piano — to name a few!

Last summer, she represented England at the finals of the Dance World Cup with her troops from Ryde Academy.

Young Achiever sponsored by Phoenix Youth Services

Not only does Kye Elliot ride bikes at Speedway, but he also volunteers at the track every week.

He’s been described as “a wonderful young man”, who says getting on a speedway bike makes all his worries disappear.

Isle of Wight Radio Managing Director, Claire John, said: “What an amazing, emotional night! Every time Isle of Wight Radio hosts these awards it

never ceases to amaze me how remarkable young people on the Island are. We had so many incredible nominations and each winner is incredibly deserving. Well done to all of them and a big thank you to all our sponsors and the awards’ new venue Tapnell Farm, for making it such a fun-filled event. What a night!”

WightFibre Chief Executive, John Irvine, said: “This is the best and most important awards ceremony on the Island. It’s for the young people on the Island. Young people on the Island get bad press very often. Anyone who watches these awards will see that actually there are so many amazing young people, very deserving young people, here on the Island.”

Sponsored by
wightfibre
because we care

Coral Star

01983 760212
coralstar.co.uk
Trips & Private Hire

Boat Trips, Isle of Wight, Boat Charters, Lymington, Yarmouth, The Needles

Private hire and Charters from Lymington, any day of the week.

Wedding blessings, renewing vows, ash scattering, hen & stag parties.

Pick-up from Yarmouth or Lymington.

Sun downer trips to the Needles, we have a small licenced bar on board.

TRIPS TO THE ISLE OF WIGHT & THE NEEDLES

3 April – 30 September

BOOKING ESSENTIAL

Ferry Service Every Day

Lymington – Yarmouth

10.00 09.15

12.00 10.45

15.30 14.30

17.00 16.15

£20 adult £15 child return

£15 adult £10 child single

Trips to see The Needles

Monday – *Wednesday* – Friday

Sunday

Leave Lymington – 12.00

Return Lymington – 15.15

Yarmouth Included

For more time on the Island catch a later
return boat £30 adult £15 child

All trips from Town Quay, Harbour Masters Pontoon by request

April – July – September – ALL TRIPS WEATHER PERMITTING

Please phone to avoid disappointment. Harbour Master pontoon, Bath Road SO41 3SE is better for parking.

Licensed by the Maritime and Coastguard Agency (MCA) to safely carry 62 passengers, but for passenger comfort we limit the passengers to about 40. If you have a large group please phone for details.

01983 760212 or 0777 2005567 • www.coralstar.co.uk • VALID 2022



Cherry Tree
shutters
Changing your view

**20%
SALE
NOW
ON!**

01983 640174

www.cherrytrees shutters.co.uk

Providing interior plantation shutters to cover any window style or colour including; Square, Rectangle, Circular, Arched, Bays and Patio Doors.

**0%
FINANCE
AVAILABLE**



*Terms & Conditions Apply

Checkatrade.com



Domestic and Commercial Heating Oil, Agricultural and Marine Diesel supplied from our Newport fuel depot.

On the Island, for the Island.

Call 01983 654321 to speak with our dedicated team to order your Fuel or Heating Oil.

Solentfuels.co.uk



Scan here to go directly to our website



Island Clock & Watch Repairs

Over 50 years in the trade



- Old Watches and scrap gold purchased for cash (*within one hour*)
- Graduate of the British Horological Institute (1970)
- Restorations to Antique & Modern Clocks and Watches

Free collection & delivery, all over the island.

Tel: 07867527157

10% OFF WITH THIS ADVERT



RECRUITING NOW FOR CARERS

- BLOCK CALLS
- COMPETITIVE RATES
- GREAT WORK LIFE BALANCE

HIGH QUALITY CARE AND SUPPORT IN YOUR HOME WITH...

- DOMESTIC CARE
- SUPPORT WITH MEAL TIMES
- PERSONAL CARE
- BESPOKE PACKAGES

CH TRAINING

CH - TRAINING OFFERS A WIDE RANGE OF ACCREDITED COURSES FOR...

- SCHOOLS
- HOLIDAY PARKS
- CARE SECTOR
- ALL INDUSTRIES

THE ISLANDS LOCAL TRUSTED TRAINING PROVIDER

www.careathomeiow.com/ch-training.html



DOMESTIC ELECTRICAL SERVICES

D.E.S.

The Islands White Goods Repair Specialists



SAVE TIME AND MONEY
CALL D.E.S TODAY ON 01983 282939

Innovation Centre, St Cross Business Park
Newport, Isle of Wight PO30 5WB

Tel: 01983 216400

Email: info@careathomeiow.co.uk

Website: www.careathomeiow.com



Platinum Anniversary FOR FRESHWATER FAMILY BUSINESS

F. Robert Frise, the Watchmaker, Clockmaker & Jeweller in Freshwater's one-way High Street on the hill, celebrated its 70th anniversary on 2nd May.

The original shop in Station Road (now School Green Road) was rented for £1 per week in 1952 by Business Founder Francis Robert (Bob) Frise. Without the need to travel to Newport by train to work, and by giving up smoking, Bob was able to afford the rent and to establish the shop and workshop.

The business blossomed and the shop has been at its current location since 1964

The business blossomed and the shop has been at its current location since 1964. Bob Frise passed away in December 2010, aged 94, having worked in the business until 6 months prior to this. His Daughter, Heather, joined the business after she married in 1967 and initially worked there for £1 per week. Sadly, she passed away suddenly in July 2015 having held a leading role in the business for 48 years.

The shop went from



F. Robert Frise Jewellers as now



Shop & High St July 1988



Station Road 1954 & F. Robert Frise 1st Shop



Andrew (Grandson) & Donna Cooke, Heather Cooke (Daughter - nee Frise) & Francis Robert (Bob) Frise, 2008

three generations of the family to one in just 5 years and is now run by Heather's Son, Andrew, and his wife Donna. Andrew grew up in the business and learned to repair clocks before he left

school whilst Donna joined the family in 2002 and has been a part of the business ever since.

The shop continues to provide an array of repair services from watches to

mechanical & quartz clocks and all types of quality jewellery plus engraving, watch batteries, watchstraps/bracelets and more. ©

Full details can be found at frobertfrisejewellers.com.



Bob, Gladys & Heather Frise during the flooding of 1954. Heather was 10.



Station Road Flooding 1954 & F. Robert Frise Shop on the right

isle of wight radio

TOPPING IN THE MORNING



JOIN US WEEKDAYS FROM 6AM

FM 107/102 OR TELL YOUR SMART SPEAKER TO PLAY "ISLE OF WIGHT RADIO"



THE ISLAND HAS TALENT 2022 – REGISTER NOW!

We are looking for singers, dancers, comedians, jugglers and more! Show us your talent!

Heats on 9th July, 23rd July & 6th August. Final on 22nd August.

Hosted by
Derek Sandy



THE WINNER WILL RECEIVE A £1,000 CASH PRIZE.

Free to attend and watch with all the family on Ryde Seafront.

FANTASTIC
COMPETITION

WIN A PARADISE HOLIDAY TO BARBADOS & PS5!

Enter our competition and you could win an all expenses
paid holiday for two in Barbados and a Playstation 5.



SCAN ME



THE ISLAND HAS TALENT 2022



CARBON CLEAN IOW (Ltd)

**Vehicle Diagnostics
HHO Carbon Cleaning
DPF Cleaning**



**DPF Cleaning
Save yourself
from costly
repairs!**

**Cars & Vans
Commercial & Agricultural
Marine & Plant
Euro 4, 5 + 6
24 Hour Turnaround
Collection & Delivery Available**

☎ 01983 241522 📞 07376 480177
✉ info@carboncleaniow.co.uk 🌐 www.carboncleaniow.co.uk
Follow us on   **carboncleaniow**

Ventnor Botanic Garden


A summer of events at Ventnor Botanic Garden, there's something for everyone.




- 3rd - 5th June - Wellbeing Weekend
- 5th June - Jubilee Picnic in the Garden
- 18th - 25th June - **50 Years A Garden, 50th anniversary week**
- 24th July - The Tales of Peter Rabbit - Quantum Theatre
- 31st July - The Reluctant Dragon & A Midsummer Night's Dream - Quantum Theatre


botanic.co.uk/whats-on/

  📞 01983 855397 📍 PO38 1UL



**RETRO STAYCATIONS, RYDE
AN EVENING
WITH**

ABBA Chique



1ST JULY
Tickets £20.50
Teens £10.50
Kids go free

Prepare to be transported right back to the 1970s and '80s...
Outstanding vocals, stunning costumes and all of ABBA's greatest hits will guarantee a fun-filled night of entertainment you won't forget!
The ABBA Chique Tribute Show recreates ABBA as they were in their prime; sexy, energetic and rocking. Made up of a full 5-piece band of pro musicians, this dynamic act pride themselves on their authentic ABBA sound and look, ensuring a professional, polished show, packed full of glitz and glam.
On the evening of Friday 1st July, this solid gold performance will take place on Jack Up Event's shiny new silver bullet Airstream stage. Situated in a pretty meadow on a small working farm, overlooking the scenic views of nearby Brading Downs, this will be an open-air concert. With a Real Ale bar courtesy of Island Ales and freshly cooked local produce BBQ prepared by Hazelgrove Farm kitchen, it's the perfect way to party your way into Summer!
jackupevents.co.uk
Free parking available on-site

ISLE OF WIGHT

CANTATA Choir

7.30PM SATURDAY 25th JUNE 2022
Ryde Methodist Church, Ryde PO33 2PT

Gloria
Vivaldi

Zadok the Priest
Handel

I Was Glad
Parry

The Lily and The Rose
Chilcott

Tickets: £10
Web: iowcantatachoir.co.uk/concerts
Tel: 07760 852074

Registered Charity: 1044777



She'll Reign on your Parade

Her Majesty The Queen celebrates her Platinum Jubilee this month — marking 70 years on the throne.



The Queen's formal coronation as Queen Elizabeth II took place on June 2, 1953, in Westminster Abbey, following the death of her father, King George VI.

In 2012, The Queen visited the Isle of Wight on a tour to celebrate her Diamond Jubilee. She arrived in Cowes by boat, where she was greeted by thousands of Islanders all keen to welcome her.

The visit to the Isle of Wight began with a 21-gun salute from the Royal Yacht Squadron, before her majesty and the Duke of Edinburgh walked along the Parade accepting gifts from well-wishers.

Her majesty was treated to a performance from pupils at Cowes Primary, before taking a seat at the RNLI station in Cowes where it was blessed by the Bishop of Portsmouth, Rev. Christopher Foster.

The Royal Party then travelled by boat to Cowes Yacht Haven for the final part of the visit where they were greeted by sea cadets. The Queen was given a hamper of Island produce by chef, Robert Thompson.

She also visited back in May 2004, to mark 100 years since Osborne House opened to the public.

I would like to express my thanks to everyone on the Island for the loyalty and support you have shown over so many years

On her visit, Her Majesty The Queen said: "I am pleased to be able to visit in the one hundredth year of the House being open to the public, and glad to find it is being so well looked after.

"The Isle of Wight clearly has much to be proud of. Our various engagements this morning — seeing the refurbished rooms here at Osborne House, travelling on a restored Steam Railway, visiting a Respite Care Home, and viewing a new yachting facility and an aerospace construction site — illustrate the things that bind us together: the heritage of the past, the values of our present and the shared challenges of the future.

"The Isle of Wight is well known for its hospitality, and the warmth of your welcome is greatly appreciated. I would like to take this opportunity to express my thanks both to you and to everyone on the Island for the loyalty and support you have shown over so many years."

As the Isle of Wight gears up to celebrate 70 years of Her Majesty's reign, we take a look at what's going on around the Island and where.

Jubilee Events

Free Jubilee 'Picnic in the Park' celebration at Northwood House

Bring some family, friends and a picnic to join in the official free community celebration of the Queen's Platinum Jubilee at Northwood House and Park and Cowes on Sunday 5th June from 12pm to 5pm. There will be live music on the Northwood House lawns, as well as a



**JUNE 5TH
12PM-5PM**

kid's arena with entertainment and activities including fun races and dancing. There will be a number of Island charities showcasing themselves too as well as a licensed bar, bbq and tea tent... plus a huge fun dog show with lots of classes, so bring your dog too! Don't forget to dress up in something red, white or blue to mark the occasion. **More information at northwoodhouse.org/events**

**PICNIC
IN THE GARDEN.
5TH JUNE. 11AM-3PM.
Ventnor Botanic
Garden.
botanic.co.uk**



Jubilee Weekend Family Fun Days at The Chequers Inn

To celebrate the Queen's Jubilee weekend, The Chequers Inn, Rookley, will be putting on plenty to keep the kids entertained. There will be two large bouncy castles with slides, face painting, pony rides and entertainment throughout the two days. Drinks and food will be available from the pub as usual.

**4TH & 5th
JUNE
11AM-7PM**

**JUBILEE STREET
FAIR AND BEACON
LIGHTING.
2ND JUNE AT 12PM.
High Street,
Bembridge.**



Queens Jubilee Family Fun Night at The Isle of Wight Community Club

The theme for the evening is 'Through the Decades' with prizes for the best fancy dress. The decades in question are between the 1950s and now to celebrate the long reign of the Queen.



The Cowes club has a quiz planned for throughout the evening, music, games for kids, a raffle and the kitchen will be open until 9pm. Quiz starts at 7pm.

**4TH JUNE
6PM**

Jubilee Events in Shanklin

The Town Council, working with community groups including local churches, Shanklin Rotary, Shanklin Brass Band and Shanklin Performing Arts Centre, are organising several free events over the holiday period. **Friday 3rd June:** There will be an event on and around the Pier Apron and beach. **• Hog roast • Live bands and DJ all day • Coco Cabana performances by Dance Vibez • Children's entertainment by the Lower Hyde Entertainment Team**

• Hula Hoop and Limbo Dance competitions Saturday 4th June: At Falcon Cross Hall and around town **• Rotary table-top sale at Falcon Cross Hall • Buskers around the town Sunday 5th June:** The Big Jubilee Picnic at Rylestone Gardens from 11.30am-7pm **• Live music with Derek Sandy and Company B, Break the Ice, Maurice Kachuk, Jake & Tilley, and EMZ Wight • Shanklin Brass Band in concert • Refreshments tent • Pimms tent • Strawberries and Cream stall • United Churches of Shanklin Platinum • Jubilee Service to finish All welcome. Bring your own picnic.**



**WHITWELL
PLATINUM JUBILEE
STREET PARTY.
3RD JUNE AT 12PM.
Whitwell
Village**



JUBILEE CELEBRATION

**JUNE 4TH
9AM-6PM
NEWPORT**



GET INVOLVED!
Come and See the fun for free

**GRAND PARADE STARTING 3PM FROM RECREATION
GROUND ROAD DOWN TO NEWPORT QUAY**

**BIG SCREEN SHOWING JUBILEE BROADCASTS
IN ST JAMES SQUARE**

**PLATFORM ONE PERFORMANCES
IN ST JAMES SQUARE 10AM - 6PM**

**MARKET IN ST THOMAS SQUARE WITH LOCAL PRODUCERS,
ARTISANS AND BUSINESS OWNERS 9AM - 4PM**

STREET ENTERTAINMENT

Contact: regeneration@iow.gov.uk



Lower High Street and St James Square will be closed to vehicles all day, there will be entertainment and performers in the street. Upper High Street will also be closed during the parade.



new carnival

SATURDAY
4TH JUNE
RYDE TOWN
10:30AM –
3:30PM

CELEBRATING THE QUEEN'S PLATINUM JUBILEE

with ONTO THE STREET



Ryde town centre has three prestigious squares – Town Square, Minghella Square and St Thomas's Square – all of which are set to become the focus for a range of high-quality street entertainment. The project was devised by Ryde Business Association to celebrate the Platinum Jubilee by bringing entertainment out onto the streets of Ryde, encouraging the community to visit the town, enjoy the day and explore the local shops and businesses.

The event will see collaborative working between New Carnival, Monkton Arts, Ryde Arts, Riboleau St Studios, Ryde Town Council and Executive Command. Funded by Arts Council England, this will create not only a memorable Jubilee Day, but an event that we can build upon in the future.

- New Carnival will work with local youth and arts groups to develop community street performances of theatre, carnival, and deliver an exciting range of costume making workshop, arts, and crafts.
- Monkton Arts will develop an arts and craft market to be located in St Thomas's Church Gardens.
- Ryde Arts & Riboleau Street Studios will provide opportunities throughout the day for the community to get involved in pattern making which will go on to be incorporated into a large-scale mural.



- Ryde Town Council will support logistics for the event.
- Executive Command, a local security company, will offer training for volunteer stewards and marshals who will then support all the threads of activity on the day.

We believe that the Jubilee celebrations can provide a unique opportunity to fuse many creative

opportunities together within Ryde to support, and be supported by, the retail sector in the town. The addition of professional street entertainers to the day will ensure that our first 'Onto the Street' event will attract a large diverse audience into Ryde and help set the scene for an annual unique festival unlike any other currently experienced on the Island.

Katy Edmunds from New Carnival said "We see 'Onto the Street' as a great opportunity for many sectors of the town to work together in a way that has not happened before. This collaboration will truly benefit community cohesion in Ryde. We want to bring all our communities back onto the streets of Ryde to support each other, to build new and lasting partnerships and to celebrate all the town has to offer".

Hannah East from Ryde Town Council said "We are delighted to be a partner in this amazing initiative

ONTO THE STREET RYDE

Saturday 4th June 2022



'Onto the Street' and what a fantastic year to kick it off with the Queen's Platinum Jubilee. Not only will it be a fantastic day celebrating the Queen's Jubilee, but it will also be wonderful to see Ryde come alive with street performances"

We believe that by harnessing the excitement of the Platinum Jubilee it will act as a catalyst for change in the perception of the town centre. 'Onto the Street' is so important to us because it will: -

- Provide inspiring training for many of our young people
- Showcase their creative and sporting talents in a public arena
- Offer free high-quality entertainment for everyone to enjoy
- Inspire young people to consider the arts as a viable career path.
- Develop a pool of volunteer trained

stewards who can support the local tourist economy

- Increase income opportunities for artists and artisans
- Support opportunities for different communities to work together for mutual benefit
- Put Ryde firmly on the cultural map
- Offer a range of legacy project ensuring that 'Onto the Street' isn't just one day, but the start of many such days.

Town Ambassadors

We know that the events that are offered in Ryde often struggle to find trained stewards essential for the safety of those events. Whilst this is small part of our project, we see it as vital in that it provides a structured opportunity for the many local people who want to find a route to volunteering, it will ensure the safety of the public at 'Onto the Street' and we aspire to maintain support for this volunteer team to develop some 'Town Ambassadors' as on the street guides and information sharers on busy summer weekends in Ryde. ③

WHAT'S ON

Pre-event PERFORMANCE rehearsal

2nd June. Oakfield Primary School 11am-3pm

New Carnival is looking for a small troop of budding performers to be part of its 'Back to the Future' skateboarding and dance performance.

If you are free on Thursday 2nd June for a rehearsal at Oakfield Primary School as well as the performance day on Saturday 4th June, in Ryde, please contact Gemma Mallinson to register gemma@thenewcarnivalcompany.com

4th June. High Street & Union Street.

Craft Market, St Thomas's Square 10:30am-3:30pm

The Isle of Wight boasts many talented artists and artisans, and the inclusion of an open-air art and craft market will provide many of them a new opportunity not only to sell their wares but also to raise public awareness of themselves as artists. Many of us have witnessed the great success of art and craft markets in town like Lymington, Hay-on-Wye or Keswick and understand that they not only support the producers but that the marketplace is a significant attraction for the town. We hope that these bespoke markets will be present in Ryde on a more regular basis.

Royal Victoria Arcade

Elizabeth in Wonderland at 12pm

New Carnival, 13b Union Road, Ryde

Drop into New Carnival between 11am-2.45pm to make a Jubilee Flag. Free workshop for families. Once your flag is made, why not join the finale celebration, starting in the Town Square at 3:15pm

Cheeky Monkey Circus Act

Town Square 2pm-2:30pm

One Cheeky monkey takes the essence of Covent Garden and brings it 'Onto the Street'. Danger, death defying feats and dodgy jokes you would expect from street hustlers alongside the polish, presentation and pizzazz of the high-end pyro shows. You'll see acrobatics, knife tricks, Flaming Cyr wheel and juggling galore.

Town Square food market and performances

Back to the future! The next generation.

Performance times ● 12:45pm ● 1:30pm ● 3pm

● Finale 3:15pm

New Carnival will be working with young people within the Ryde community to create a 'Back to the Future' style performance. This piece will celebrate 70 years of dance, spanning the Queen's reign, and will integrate dance performance with skateboarding. Working in collaboration with John Cattle's Skate Club to devise a piece that integrates sport (skateboarding) and arts, celebrated in a public arena.

New Carnival invites families and individuals to join them in Town Square at 3:15pm to celebrate the Queen's Jubilee by **Dancing in the Streets**. To end the day, join Vectis Brass Band at 3:30pm for a trip down memory lane in Minghella Square.

Elizabeth in Wonderland: A professional street performance piece.

Original Script written by Charlie Bonner, Roaming performances throughout the day. Based on the idea of 'Mad Hatters Tea Party' linked with the tradition of Royal Street Tea Parties. Physical Theatre, comedy.

Community Art Project; large-scale mural

Community opportunity to get involved in pattern making which will be incorporated into a large-scale mural. Drop-in sessions taking place at Minghella Square between 11am-3pm. Work produced will be displayed in Town Square during the summer.

CORONATION *Celebrations*



Pic above and right, Coronation party in Haylands, Ryde, courtesy of Steven Jones.



Atherley Cross Road during the Coronation in 1953.
Photo courtesy of Elaine Fisher (nee Smith).



Coronation Day in St James' Square, Newport.

Her Majesty The Queen celebrates her Platinum Jubilee this month. The Queen's formal coronation as Queen Elizabeth II took place almost seventy years ago on June 2, 1953, in Westminster Abbey, following the death of her father, King George VI.

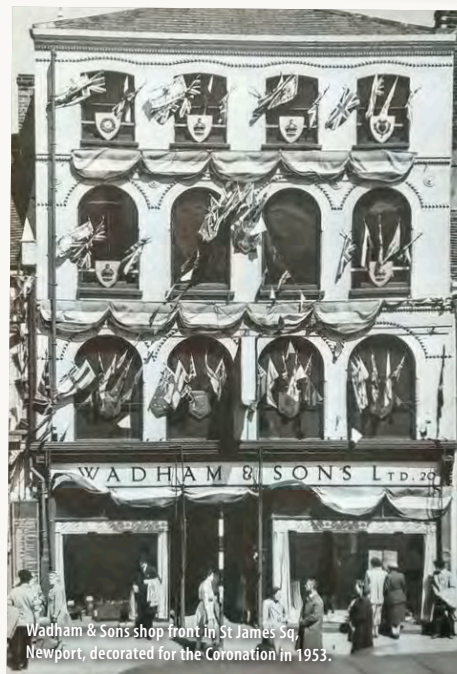
The Isle of Wight lined the streets with flags and came out in their thousands for street parties, concerts, fayres and sports tournaments, to mark the historic event. ③



Arthur Street, Ryde, Coronation party held on the 2nd June 1953. Photo courtesy of Derek Tomlinson.



1953 Coronation Party Vectis Road, East Cowes.
Photo courtesy of Eric Mew.



Wadham & Sons shop front in St James Sq, Newport, decorated for the Coronation in 1953.

“The Isle of Wight lined the streets with flags and came out in their thousands”

Entertainment GUIDE

Visit iwbeacon.com to see our full events guide

Red Hot Chilli Pipers In Support of Aspire Ryde

An evening gala festival of fun and music, with The Scots Guards Association and White Rose Highland Dancers.

Red Hot Chilli Pipers: Headline sensation Red Hot Chilli Pipers re-wrote the rule book for rock music. Transforming the sound of bagpipes into BAGROCK. This global phenomenon is coming to the Isle of Wight for a Gala Summer Concert like nothing the Island has ever seen.

Wight Hot Pipes: The Island's very own Celtic bagpipe rock band Wight Hot Pipes kicks off the show with their instrumental line up in combination with lead bagpiper Kieron and the sheer talent of lead singer Tori.

Matt Black: The Piano Man: Joining the fun on stage will be the entertainer extraordinaire from Dorset, Matt Black who will dazzle you with his music and bring tears to your eyes with laughter.

robin-hill.com/event/red-hot-chilli-pipers-summer-gala-concert



23RD JULY
6PM
ROBIN HILL
COUNTRY
PARK

Rhythmtree Festival

Rhythmtree is back for its 10th show at their new site on Sticelett Farm, Thorness Bay on the 8th to the 10th July. Headliners Turin Brakes, The Wailers and The Fatback Band will be supported by over 120 live acts, a vibrant carnival, workshops and activities for the family. **Come on a voyage of discovery and visit rhythmtree.co.uk for tickets.**



8TH-10TH
JULY
STICELETT
FARM

From Hospital Beds To Flower Beds

This year, Ventnor Botanic is celebrating 50 years of garden history. Opening in June 1997 the gardens turned the once hospital site into an open place for all to enjoy.

During the week from the 18th-25th of June, Ventnor Botanic will hold a week of celebration to commemorate its fantastic 50-year history.

Ventnor Botanic will also be hosting two of its popular Donation Days during the celebration week as well!



Donation days make it possible to open the grounds with no admission fees, simply a donation for your visit.

Contact the team to book your visit today. Email marketing@botanic.co.uk

Dash and Splash: A Fun Run In Support of Aspire Ryde

A 5-kilometre dash along the length of Sandown Bay. There are 43 groyne in total to negotiate, most of which are a straight run through large gaps. The remaining 14 will be splashed around,

which at low tide will be mostly ankle deep.

Two groyne could be waist deep, these will have marshals in the water. The run starts at Shanklin Rowing Club, and dashes along the beach, under Sandown pier, to finish at Yaverland opposite the Yaverland Sailing Club. dashandsplash.org.uk



10TH JULY
2PM
SHANKLIN
ROWING
CLUB

Lawn Bar reopens for summer weekends

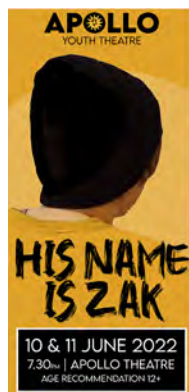
If you've missed it over the last two summers, then where have you been?! The Lawn Bar at Northwood House in Cowes has become one of the most popular outdoor hospitality venues on the Island since it started and will be reopening in time for the Jubilee Weekend on Friday 3rd June, offering the perfect spot for guests to relax and enjoy a drink in its beautiful parkland setting. The bar, renowned for its relaxed Balearic vibe, is open 4-11pm on Fridays, 12-11pm on Saturdays and



12pm to 8pm on Sunday. Look out for guest caterers across the summer and a fantastic selection of wine, cocktail pitchers and beers. northwoodhouse.org

Apollo Theatre

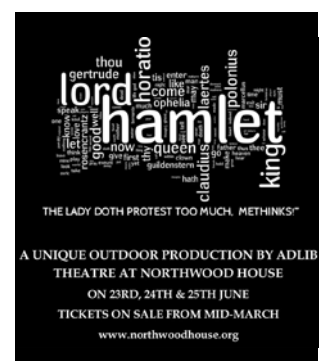
Support local and see great quality performances at The Apollo Theatre!
Coming up: 'His Name is Zak' - Growing up and finding out who you are is hard enough for many teenagers, but for Zak, it was harder than most.
'The Memory of Water' - Shelagh Stephenson's warm and observant drama suggests life is a permanent mix of comedy and tragedy.
apollo-theatre.org.uk



Adlib Theatre present Hamlet

Don't miss this fantastic opportunity to enjoy a unique interpretation of Shakespeare's Hamlet, performed outdoors in Northwood Park, Cowes by the Island's renowned Adlib Theatre group. This time the famous tragic drama is reimagined and set in the 1930s, in a new and accessible twist on the play. Three evenings performance evenings are available with gates from 5.30pm for a 6.30pm start.

Tickets are available from northwoodhouse.org/events at only £8 per person or £12.50 with a glass of house wine, Pimm's or Mermaid G&T. Early booking advised.





NEWS FROM

SANDOWN SOUTH

by Cllr Ian Ward

OCEAN HOTEL: I've continued to engage with council officers, police and the media, and the case now has a much higher profile. The owners have appealed the Sec 215 Order to clear and secure the site and at the time of writing a court hearing has been scheduled for 20 May. This is a preliminary hearing which will lead to a full hearing. Unfortunately, this all creates further delays in getting the site regenerated.

THINKING OF BUYING A MOBILE HOME?: Some residents living on holiday parks who, having bought a mobile home to live in, and accepted verbal assurances they could do so, are being told to leave the site as they were not allowed to live in them permanently. Some buyers have lost thousands of pounds.

ADDITIONAL WASTE BINS: Residents often say their waste bins are too small to take all their waste. Unfortunately, sometimes recyclable waste is put into their black non-recyclable bins which then quickly fill up. To encourage residents to recycle as much as possible, the council will issue residents with a second Green

Recycling Bin if one bin is too small for your family's requirements. To obtain a second green bin or bag you can apply online at iwight.com/waste or call 823777. If you do not have room for a second bin you can put paper/cardboard in a separate white or clear bag and place it next to your Green Bin on collection day. Can I also remind residents that bins should not be left on pavements for longer than 24 hours.

WHITE CORNER BUILDING: FITZROY ST/STATION AVE: The IW Council has previously negotiated with the owner of the derelict white building on the corner of Fitzroy Street and Station Avenue to conduct exterior improvements as soon as possible. The work has not been done and the owner has not responded. IW Council Officers are resurrecting the official case for Sec 215 enforcement order that was suspended when new owners bought the building and gave assurances that they would carry out the required work. It should not be too long before the Enforcement Order is issued.

📞 403193/07772559093
✉ ian.ward@iow.gov.uk

Chillerton and Rookley Primary Saved From Closure

By Louise Hill LDR

Campaigners are looking forward to Chillerton and Rookley Primary School flourishing again now that the axe has been lifted from over it.

Last month, the IW Council's cabinet member for children's education, Cllr Debbie Andre, announced the school will now not be amalgamating with Godshill.

The school had been facing the threat of closure after its running body, the Stenbury Federation, asked the council to amalgamate the two schools citing a lack of pupils and rising costs.

A council report, from January, says the school was forecasting a deficit of £93,699 in the last financial year (2021/22) and that in October, only 21 pupils were on roll at the school.

Speaking in March 2021, Chillerton and Rookley headteacher, Mark Snow, told a public meeting the school 'needed bums on seats'



but if they were not there it was difficult to manage with a budget that was shrinking by the day.

He said: "It is not just about money, it is about the wellbeing of children but if the funding is not there, what can I do?"

At the end of last year, an Isle of Wight Council consultation found 32 per cent of respondents preferred the amalgamation of schools by closing Chillerton but 25 per cent preferred a free school or academy secured as a sponsor.

Now, Cllr Andre has said she asked officers to ensure the school is well supported moving forward and to investigate options for how the council can support smaller primary schools so they can be sustained during periods of falling numbers and financial challenges.

£10.00
OFF YOUR NEXT MOT



WESTRIDGE GARAGE

01983 562717 / 562160

westridgegarage.co.uk

Brading Road, Ryde, Isle of Wight, PO33 1AY

This voucher cannot be used in conjunction with any other reduced price MOT offer. (rrp £54.85). Exp 30th JUNE 2022

Expansion Plans for Sandown Sanctuary

By Oliver Dyer

Sandown's Wildheart Animal Sanctuary could be treated as a 'special purchaser' for a strip of Isle of Wight Council-owned land that adjoins its site.

The sanctuary — formerly Sandown Zoo — on Yaverland Road has been a key feature of the Bay area for more than four decades.

Now, the trust which runs it wishes to acquire the small area of land which runs directly behind the sanctuary's existing boundary.

It says the land has "huge potential" for it to expand its offering to tourists and support its charitable activities.

It has asked the council to be treated as a special purchaser for the site and submitted a formal request which which was approved by



Ryde's Barclays Bank to Shut Permanently

By Oliver Dyer

Barclays Bank is to permanently close its Ryde branch, Isle of Wight Radio has been told.

Customers who use the bank, on the High Street, have received letters informing them of the decision.

Isle of Wight Radio has been told the branch will shut its doors for the final time on August 4, at midday.

Falling footfall is being blamed, with the firm saying only 78 regular customers use the branch exclusively for their banking.

It says it "does not intend to make anyone redundant as a direct result of this closure".

It means the only Barclays bank on the Island will be at St James Square, Newport.

Barclays' Shanklin branch closed in August 2017.

A spokesperson for Barclays said: "The decision to close a branch is never an easy one. However, customers are increasingly using alternatives to branches to do their banking. As a result, we are seeing a sustained fall in branch visits across the UK.

"This is reflected at the Ryde branch where there has been a 14 per cent reduction in counter transactions in the two years to March 2020. In addition, 84 per cent of our customers at the branch are also using different ways to bank.

"We will work with our customers and provide alternative options to ensure they can continue to manage their money and receive financial expertise when required."



the Cabinet.

A separate decision will be needed about any disposal or leasing of the land following negotiations.

In a letter to the council, Lawrence Bates, the trust's chief operating officer, said: "Land is a key resource for our charity to support our operations and, with no room to expand to the front, such a strip of land would allow us to grow and develop the charity so it can go on supporting the community and rescued animals for decades to come."

He added: "Our use would be wholly in line with the guidance of the Biosphere, supporting the Island's objectives to become an ever greater wildlife holiday destination."

Councillor Chris

Jarman, Cabinet member for strategic finances, said: "The Wildheart Trust are managing a popular and long-established tourism attraction and are seeking to invest and grow their facility and the additional land will enable them to fulfil their ambitions.

"The land in question is currently unused and unmanaged and is not identified as having any strategic value.

"The disposal to the trust would support their investment in the animal sanctuary, help sustain the tourism economy and potentially provide the opportunity to create additional employment and increased visitor numbers in the Bay area."



NEWS FROM

RYDE NORTH WEST

by Cllr Phil Jordan

The Town Council held a fantastic open day on Saturday 14th May where all things happening in Ryde were on display in Garfield Road church. This was new departure from the usual annual council meeting which usually takes place every year.

I am pleased to say that many, many residents visited during the day and were able to meet with Ryde Town Council staff and Councillors and see plans and information and to ask questions about the aspirations for the town. A successful day and one that is planned to be repeated in due course.

In conjunction with that, initial discussions have taken place between Ryde Town Council and the Isle of Wight Council about the area around the canoe lake and splash park. Currently owned by the Isle of Wight Council the area needs improvement and better management, repairs and investment which are part of the talks being held and which may lead on to Ryde Town Council taking on the ownership of the area either freehold or an exceptionally long lease arrangement. Only initial discussions at this stage but we are hopeful of a better way being agreed for the area. This follows on from the recent acquisition of Ryde Marina from the Isle of Wight Council and where the

town council have started their plan of investment and improvements to the harbour.

The walkway and cycle way work at the Esplanade is under way and due to be finished in short weeks. There will then be a slight pause in the wider works until the start of September to try to minimise disruption at the key visitor period over summer. Plans progress for the temporary toilet installation on Western Gardens in preparation for the main works starting to the Highways shortly.

I have asked that the toilets are made as incongruous as possible by temporary planting around them with flowers and shrubs to mask, as best we can, the actual toilet facilities. It is, of course temporary, and the scheme must be finished by next summer when new toilets and café facilities will appear inside the newly refurbished station area. I am aware of suggestions that a café also be sited on Western Gardens and that will no doubt get public consultation as planning would be needed for such a venture.

phil.jordan@iow.gov.uk

WHITE WINDOWS

THE ISLAND'S PREMIER DOUBLE GLAZING COMPANY

ENERGY BILLS INCREASING?



Our double and triple glazed eco-tech systems delivers a step-change in the use of recycled material and content in a new generation of sustainable and energy efficient PVC-U windows and doors.

With an A+ rating for material type from the Building Research Establishment in its Green Guide, it makes the eco-tech systems among the UK's most sustainable window and door system options.



- W replacing old windows, doors and even conservatories can reduce heat loss
- W along with your roof and walls, old doors and windows can allow heat to escape
- W taking advantage of newer technology can transform your home
- W act now and help keep the warmth in

WE CAN HELP
CALL TODAY
01983 523552

whitewindows.co.uk • info@whitewindows.co.uk



NEWS FROM

RYDE

by Cllr Charles Chapman

This month we have the opportunity to have fun and have pride in our Queen and country – while celebrating the Queen's Jubilee.

Through my own charity work and county council work I was privileged to attend a garden party at Buckingham Palace and meet both the Queen and Prince Philip. It was one of the proudest days of my life, so you will not be surprised to know that not only will I be celebrating the Jubilee, but will be involved in the celebrations of the Royal British Legion. The history of this country is a proud one which I feel is not spoken about enough.

What a positive response I have had from May's blog to the proposition of a 'friends and family booklet' which could be purchased, with a discount, from the ferry companies. If we are to push such ideas forward we need emails, letters and phone calls: firstly to our MP Bob Seely, then to Wightlink, Red Funnel and IW Council. I bang on about the need to maintain this Island's heritage, green country feel, wavy country lanes, picturesque housing with its Victorian Heritage, so that we can enable visitors and residents alike,

to enjoy an experience that is not available in mainland towns and cities. Such an environment ensures that visitors want to return.

It is the responsibility of us all to follow up issues such as, over-development etc, with the ferry companies, our elected council members, paid employees and our MP. We all can find a few minutes to contact these bodies so that they can appreciate our concerns.

Ryde is outstanding in leading the way, in this respect: HAZ (Heritage Action Zone) which I wrote about last month is, I believe, unrivalled in its approach, dedication and forward-looking views: A brilliant project, with plans for heritage-led regeneration of Ryde High Street, an attractive, welcoming, safe and accessible high street. A pedestrian zone to attract increased investment, business growth and jobs and to create a 'destination' for residents and visitors.

Enjoy the beginning of summer on the Island, and hopefully, I've given some thoughts as to how you can help keep our Island beautiful.

📞 07867626733

✉ charles.chapman@iow.gov.uk

Date Set For Harbour House Appeal Hearing

By Louise Hill LDR

A popular Ryde hotspot is taking the IW Council to court after the authority refused its application to stay open until the small hours.

Harbour House, on Ryde Esplanade, has tried twice in 18 months to extend its premises licence. It was successful in September 2020 but only granted an extra half hour.

In March this year, the restaurant applied to stay open, sell alcohol and play music even later, until 1.30am, seven days a week.

After hearing from licensing officers and concerned neighbours, the IW Council's licensing committee rejected the potential extension.

It is this decision Harbour House is appealing and to do so requires the matter to be determined by magistrates.

The first listing of the appeal was heard last month at the IW Combined Court, in Newport, and a date was set for a hearing, where evidence from both sides would be given and the magistrates would make a ruling.

In his appeal of the council's decision, Karl Harding, from Harbour House, argued the

application was misrepresented due to evidence submitted to the licensing committee.

It is said the evidence given was for a separate event run on a temporary event notice, not the current trading licence.

The event in question was in July last year, for which the venue received a formal written notice, with the threat of further enforcement action, after causing 'significant disturbance' to local residents.

The council's committee heard how the event had a bass level, recorded at a nearby property at 1am, higher than that recorded at the closest residential property to the IW Festival.

The extension to licence was hoped to help the business grow, Mr Harding said, as well as improving facilities for customers.

However, the committee felt it had been persuaded by the evidence that no conditions could be applied to mitigate the harm caused.

Speaking at the court last month, Edward Elton, on behalf of the authority, said it opposes the appeal.

The case will be heard by magistrates on August 18.

VENTNOR MOBILITY CENTRE



Regain your independence...

Agents for scooters, rise/recline chairs, stairlifts and all available mobility aids



FREE HOME SURVEY! We also Buy & Sell
- Can't come to us, we'll come to you!

Unit 4, Old Station Road, Off Mitchell Avenue,
Old Station / Tunnel, Ventnor PO38 1DX

Tel: 01983 855545

**PRE-BOOKED APPOINTMENTS ONLY
TO AVOID DISAPPOINTMENT**

Woodside Retreat to Appear in New TV Show

By Oliver Dyer

Wootton's Woodside Bay Lodge Retreat is to appear on a new TV show, presented by Ainsley Harriot and Grace Dent.

Best of Britain by the Sea, will see the two presenters visit some of the UK's best seaside holiday destinations.

In Episode Five of the programme, which will air on More4 and Channel 4, the pair pay a visit to Woodside Coastal Retreat in Wootton.

The show will follow Grace and Ainsley as they stay in a self-catering property, where they cook for each other using their favourite produce and set off to explore the surrounding



area.

The duo were pictured filming on the Island back in February.

The Isle of Wight episode will air at 9pm on Monday, June 13 on More4, then aired on Channel 4 later that week.

All the accommodation featured in Best of Britain by the Sea is available to book through Hoseasons

Bembridge Community in BBC's Jubilee Footage

By Amy Shephard

The BBC were filming in Bembridge last month as the community celebrates The Queen's Platinum Jubilee with a variety of local activities.

On Monday 16 May, the BBC filmed children from Bembridge Church of England Primary School preparing for the Crown and Tiara competition, scouts from 1st Bembridge troop, two WIs who are organising special Jubilee goody bags to give to residents of care homes and other local Jubilee organisers, such as Parish Counsellor Lady Brabazon and beacon organiser, Andrew Holman.

The footage will be shown as part of the Jubilee beacon lighting programme on Thursday 2 June — where more than 1,500 hundred beacons will be lit across the United Kingdom, Channel Islands, UK overseas territories and in each of the capital cities of the Commonwealth.

Beacon organisers in Bembridge have been given a special dispensation by the Queen's Jubilee Pageantmaster, Bruno Peek, to light their Beacon 30 minutes early at 9.15pm to enable it to be filmed and uploaded

in time for the national and commonwealth coverage at 9.45pm.

The beacon at Culver Down is of historic significance being one of the main beacons used to warn of the Spanish Armada in 1588 when a fleet of 130 Spanish warships sailed to try and invade England and overthrow Queen Elizabeth I. When spotted, these beacons, manned by full time watchers, were lit one after the other to send the warning signal of invasion to London.

The current Culver Beacon, at the tip of the National Trust's land above the old gun emplacements, is believed to have been installed for the Queen's first Jubilee event in 1977. It has been used for anniversaries and celebrating the winter solstice ever since.

Sadly the ravages of the salt laden South Westerlies hitting the downs for the past 50 years had taken their toll and the whole top of the post and bottom of

the basket needed replacing. It has now been totally refurbished and reinstalled on Culver Down, thanks to the generosity of Kevin Coghlan transport, the Forge at Cowes and Dave the harbour welder.

Following the lighting will be the ceremonial cutting of



the Beacon Tart by the Deputy Lord Lieutenant, baked to the Jubilee recipe for English tarts by The Culver Haven Inn. The tarts, seven in total, are then cut into 10 pieces representing the 70 years of the Queens reign and handed out to people on the night.

The four days of the Jubilee are packed with other events including, a street fair on Thursday afternoon, open gardens, craft fair, church flower festival, concerts, the

Bembridge Burlesque dancers at the Village Inn, a harbour day on the Saturday with parade of Bembridge scows and various children's games and activities as well as the chance to visit a houseboat for cup of tea to watch the boats go by.

To catch up on event details and times please see the Bembridge Community Notice Board on Facebook or the Parish Council website: www.bembridgepc.org.uk

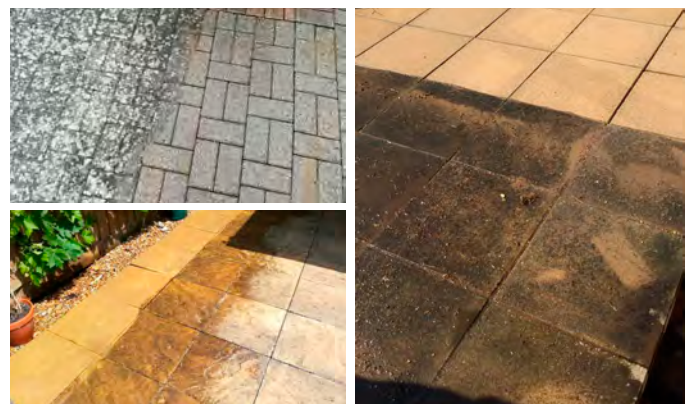
More than 1,500 hundred beacons will be lit across the United Kingdom, Channel Islands, UK overseas territories and in each of the capital cities of the Commonwealth



Jed and the team from Coghlan Transport with Lady Brabazon and Andrew Holman

Soda

Outdoor Hard Surface Cleaning & Refurbishment



Soda specializes in outdoor cleaning such as car parks, driveways, patios/pathways, decking and walls. **We do not use chemicals, just clean water with high pressure rotary surface cleaners.**

Tel: 01983 840417

Email: iansummers6048@gmail.co.uk

www.sodacleaning.com



Shanklin Town Council

Town Clerk RFO: Ms S. Janeway LL.B (Hons) CILCA MSLCC, 65 Landguard Road Shanklin Isle of Wight PO37 7JX

☎ 01983 865101 ✉ shanklintowncouncil@hotmail.com 🌐 www.shanklintowncouncil.co.uk



Town Mayor's address

Councillor Chris Quirk, Shanklin Town Mayor

I am delighted to report the repairs to the cliff staircase between

Luccombe and the beach known as Appley Steps have been completed, with only the installation of new railings at the top still outstanding. The steps should re-open early June.

As we come to the Queen's Platinum Jubilee I am pleased to confirm that the clock on the Jubilee Memorial on the Esplanade has been repaired and is now working again. The original monument was installed to mark the Diamond Jubilee of Queen Victoria, and subsequently had a new stone added to mark the Diamond Jubilee of Queen Elizabeth II. The monument is scheduled for restoration work later in the year, when the Platinum Jubilee inscription will also be added.

The Esplanade also benefits from a new flagpole, replacing the previous flagpole that had to be removed as it suffered from rot.

The new pole will be flying the Platinum Jubilee flag throughout June.

Going on to the Platinum Jubilee, there will be events to celebrate the event over the special bank holiday weekend:

Saturday 28th May "Shanklin 70 Years Ago" exhibition 10am-3.30pm at Falcon Cross Hall.

Friday 3rd June there will be an event on and around the Pier Apron and beach.

- Hog roast
- Live bands and DJ all day
- "Coco Cabana" performances by Dance Vibez
- Children's entertainment by the Lower Hyde Entertainment Team
- Hula Hoop and Limbo Dance competitions

Saturday 4th June at Falcon Cross Hall and around town

- Rotary table-top sale at Falcon Cross Hall
- Buskers around the town

Sunday 5th June The Big Jubilee Picnic at Rylestone Gardens from 11.30am-7pm

- Live music with Derek Sandy and Company B
- More live music with Break the Ice, Maurice Kachuk, Jake & Tilley, and EMZ Wight
- Shanklin Brass Band in concert
- Refreshments tent
- Pimms tent
- Strawberries and Cream stall
- United Churches of Shanklin Platinum Jubilee Service to finish

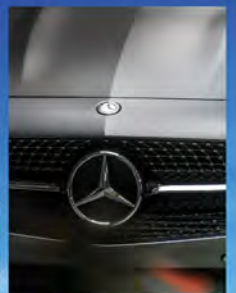
All welcome. Bring your own picnic and sun cream and join us for a day of musical fun.

A limited supply of deck chairs will be available on a first come first served basis, but feel free to bring your own outdoor chairs. Please walk if you can as parking spaces will almost certainly be hard to find, if you do drive, please park considerately.

ST HELENS SERVICE STATION ALL MAKES SERVICE & DIAGNOSTICS

Factory level diagnostics & services for BMW, Volvo, Peugeot, Citroen and Renault

Genuine parts supplied for Jaguar, Land Rover and Porsche



VOLKSWAGEN • PEUGEOT • RENAULT • CITROEN • BMW • MERCEDES



**MOTs AVAILABLE FOR ALL
MAKES & MODELS**

Embankment Road, Bembridge PO35 5NS. Tel. 01983 872332 or 07920 224181



Nettlestone & Seaview Parish Council

Brian Jennings – Clerk. 2 Harrow Cottages, Nettlestone Hill, Seaview. PO34 5DU

☎ 07464 894216 ✉ clerk@nettlestoneandseaview-pc.gov.uk 🌐 www.nettlestoneandseaview-pc.gov.uk

ELECTION OF CHAIR AND VICE-CHAIR

May 17th saw the Annual Meeting of the Parish Council and as per usual the posts of Chair, Vice-Chair and Chair of the Planning Committee were open for nomination. There is a feeling that real progress has been made post-pandemic in getting the community's views across in contentious areas like Planning and Infrastructure – as well as keeping the treatment of our green spaces at the forefront of the council's deliberations. With this progress in mind, the members opted to keep with the leadership team that has supported the council so effectively in the last year and Cllr Barry Elliott was re-elected as Chair with Cllr David Adams as Vice-Chair of the council, whilst Cllr Patricia Redpath was returned as Chair of Planning.

Good luck for the year ahead Councillors.

WESTRIDGE FARM

The council have publicly backed the "Save Westridge Farm" campaign since its inception. The campaign seeks to challenge the irregularities in the procedure that led to planning permission being granted for the building of 450+ new homes on a working farm on the edge of the parish and in the last month the Council has donated £750 to the campaign to fund this challenge – more information on the campaign can be found at www.savewestridgefarm.org.uk/.

KEEP BRITAIN TIDY SEASIDE AWARDS

The Council are delighted to announce that for the sixth year running Springvale and Seagrove

Bay beaches have been recognised with 'Seaside Awards' from Keep Britain Tidy and the members look forward to visitors being reassured as they see the familiar blue and yellow flags fluttering over the beaches for the year ahead.

PUCKPOOL PARK PUBLIC CONVENIENCES

Whilst the Isle of Wight Council still manages the majority of Puckpool Park, the Parish Council have in the last few years taken over maintenance of the large flower bed at the entrance (opposite the café) and the responsibility for the public toilets (they would have shut down six years ago without the Parish Council stepping in). The Parish Council have continually invested in improving the facilities and the latest work has seen the manhole cover in the gentlemen's

toilet replaced. It was seized in place after 30 years of use and was continually blocking, which resulted in the gentlemen's and disabled toilets having to be shut. This work will now be replicated in the women's side of the block with the intention being that no days of toilet use will be lost during the peak summer this year. This type of work may not be the first thing people associate with the Parish Council but the Councillors' commitment to keeping facilities like this open makes our parish a more accessible and enjoyable place for all.

PARISH COUNCIL MEETINGS

● Check our website to keep abreast of the latest meeting details: www.nettlestoneandseaview-pc.gov.uk/meetings. All are welcome to attend!



Finding Forever Families

Adoption can change lives for the better

Give siblings the life they deserve

- Single or a couple
- LGBT+
- Already a family
- Disabled
- Receiving benefits
- Renting or own your home

Welcome to Adopt South

Right now, we have toddlers, siblings and children with disabilities who need a family of their own to be loved and cherished.

The Regional Adoption Agency for Hampshire, Isle of Wight, Portsmouth and Southampton Local Authorities



Call our friendly team about starting your adoption journey today.

0300 3000 011 • adoptsouth.org.uk

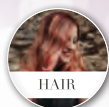




Discover the New You!

HAIR AND BEAUTY SALON

Our Services



HAIR



BEAUTY



SKIN



MAKE-UP



WAXING

- Unisex Hairdressers
- Waxing Treatments
- Make Up
- Facials
- Manicures/Pedicures
- Microblading
- Eyelash Lift
- Eyelash Tint
- Eyebrow Shape/Tint
- Spray Tanning
- Blow Dry
- Haircuts
- Colours
- High Lights/Low Lights
- Perms
- Hair Treatments
- Indian Head Massage
- Hopi Ear Candles
- Keratin Smoothing Treatment
- Weddings

Call
01983 402694
to book an
appointment today!

£5 off
any treatment*

*Terms & Conditions: £5 off any treatment with this leaflet. Cannot be used with any other offer. One leaflet per treatment. Cannot be exchanged for money.

Open Tuesday - Friday 9am - 5pm. Saturday 9am - 1pm
24 High Street, Sandown, Isle of Wight, PO36 8DE

Anne Ginger Soft Furnishings



With 40 years experience Anne Ginger and her dedicated team are happy to assist in making the right choice of soft furnishings for you.

Our service is based around giving excellent advice combined with quality products. Come and see us and turn your dream into reality.

The showroom is operating Monday - Friday on an appointment service so call **01983 407730** to book.

www.anneginger.co.uk | info@anneginger.co.uk

The Island's
**CARPET & FLOORING
SUPERSTORE**



OPEN 7 DAYS A WEEK

MON - FRI 9AM - 6PM

SAT 9AM - 5PM

SUN 10AM - 4PM

01983 533150

12 Hurstake Rd, Riverway Industrial Estate,
Newport, Isle of Wight, PO30 5UU

NO DEPOSIT INTEREST FREE CREDIT

Subject to status on orders over £495
Excludes fitting charges

Credit subject to status and affordability. Terms & Conditions Apply. D&S Carpets is a credit broker and is Authorised and Regulated by the Financial Conduct Authority. Credit is provided by Novuna Personal Finance, a trading style of Mitsubishi HC Capital UK PLC, authorised and regulated by the Financial Conduct Authority. Financial Services Register no. 704348. The register can be accessed through <http://www.fca.org.uk>

www.dscarpets.co.uk

Rugs

Luxury
Vinyl Tiles

Wood & Natural
Flooring

Vinyls

Carpets



Direct Cremation Specialists based here on the Isle of Wight for the Isle of Wight
The Island's only Independent Funeral Directors who are dedicated to this style of service
Affordable Direct Cremations. Separate the Cremation from the Celebration.

**We pride ourselves by offering great value for money without any compromise
 on the care given to you and your loved ones.**

We are proud to be the longest service Island Independent Family Funeral Directors.



**Direct
 cremations
 from £1,495
 Funeral Plans
 from £1,750**

Call 01983 632598 info@isleofwightdirectcremation.co.uk
www.isleofwightdirectcremation.co.uk

What is direct cremation?

Quite simply, it is an alternative to a traditional funeral. The cremation takes place unattended, giving you the freedom to celebrate your loved one at a time, place and venue of your choice.

How much does a direct cremation cost?

We have 2 options to choose from:-

1. Our 'Island Way' is £1,695.00 - this is for the direct cremation at the Isle of Wight Crematorium
2. Our 'Wessex Way' is £1,495.00 this is for a direct cremation at a mainland crematorium

We offer this option for families who would like to take advantage of savings that mainland crematoriums offer.

Can I get help with the costs?

Yes, if you are in receipt of benefits you may be entitled to a payment of up to £1,000 from the Department of Work and Pensions, so we advise contacting them to enquire.

What is the difference between Isle of Wight Cremation and a mainland provider?

We are based here on the Island, we can take your loved one into our care promptly and without the distressing delay of travelling over on the ferries.

We can meet you face to face at our Island offices. Or make all arrangements over the telephone.

Whereas mainland providers often courier the ashes back, we provide a more personal service by hand delivering them to you at your home, or you can come in and collect them at either of our offices. We are locals and understand our local community.

Do you offer prepaid direct cremation funeral plans?

Yes, we do and we use Golden Charter, the UK's market leader for providing prepaid funeral plans to Independent Funeral Directors. Your funds are safe and placed into the Golden Charter Trust. Recently we were awarded by Golden Charter as the best funeral planner for 2020 in the Southern England Region.

THE ISLAND'S FAVOURITE...
isle of wight radio



'Topping in the Morning'
with Paul, Jamie and Hayley
every weekday from 6am

FM107 & 102
For the latest breaking Island news
iwradio.co.uk

 **FACEBOOK**
[isleofwightradio](https://www.facebook.com/isleofwightradio)
 **TWITTER**
[@iwightradio](https://twitter.com/iwightradio)
 **INSTAGRAM**
[@iwightradio](https://www.instagram.com/iwightradio)

The Island's Favourites

STUDIOPHASE   

The Isle of Wight's local TV experts
Call 404406 studiophase.com

Why choose us?

- CAI approved • Friendly, reliable engineers
- We have over 30 years of local knowledge



THE HUNT IS OVER

lesliesmotors

Used Car Sale Has Started!

Save up to £2000 on a used car

Low rate finance

We will beat We Buy Any Car on your part exchange value!

lesliesmotors.co.uk




A&E BUILDERS
BUILDING & CONSTRUCTION SERVICES
No job too big or small!
EMAIL: aebuilders71@gmail.com

- DRIVEWAYS • PATIOS • EXTENSIONS
- SPECIALIST BRICKWORK
- ORANGERIES • PORCHES
- DRAINAGE & HOUSEHOLD MAINTENANCE

Call for a no obligation free quote from a builder with over 30 years experience. Public liability insured.

TEL. 07525700980/01983 883787

YOUNG PLUMBING
PLUMBING & HEATING SERVICES

Tel: 01983 339671
Mb: 07967 225030

www.YoungPlumbing.co.uk



Advertise with us from as little as £38 per month.

Call 01983 433112



Coastal Mobility

THE ISLANDS PREMIER MOBILITY SPECIALISTS

ALSO: WHEELCHAIRS • BATH LIFTS • WALKERS • ADJUSTABLE BEDS & CHAIRS • ACCESSORIES






SHANKLIN Tel: 866431
56 REGENT STREET

NEWPORT Tel: 533500
9 ST THOMAS SQUARE

FREE ISLAND WIDE DELIVERY!
Great deals on mobility scooters and lift and recline chairs




"We don't just sell hearing aids, we provide total hearing care"

Wight Sound-Hearing

Registered Healthcare Professional
Colin Stockdale RHAD MSHAA AIHHP (Executive Member)

12 High Street, Shanklin PO37 6LB
Tel 01983 86 59 59

All Hearing Tests and Consultations are FREE

Latest Digital Testing & Fitting Equipment

Video Oscope (see inside your own ear)

Try Before You Buy OR RENT a Digital Hearing Aid (from £1 A DAY)

EVERY Brand of Hearing Aid Available in the UK

Free Home Visits

Easy Payment Plans



**GLANVILLES
DAMANT**
LEGAL SERVICES

ADVERTISEMENT FEATURE



— | LEGAL & FINANCIAL | —

No-Fault Divorce

The introduction of no-fault divorce represents the biggest shake up in divorce law in over half a century and finally puts an end to the 'blame game'.

On 6th April 2022, the law changed and a new no-fault divorce process was introduced. Under the old process, to be granted a divorce, one spouse was expected to prove their marriage had “irretrievably broken down” by demonstrating one of the following five facts: (1) adultery (2) unreasonable behaviour (3) two years separation with consent (4) five years separation (5) desertion. This means that unless a couple were prepared to face years of separation, one spouse was forced to accuse the other of adultery or unreasonable behaviour.

The end of any relationship can be distressing regardless of the reason and assigning blame at a time when emotions are already running high only made the process more acrimonious. It also diverted attention away from the important financial and child related issues arising from the divorce and parties became less willing to engage in meaningful

negotiations as a result.

Given that the grounds for divorce have no impact, except in very limited circumstances, on the outcome of any financial settlement or the arrangements for any children, assigning blame was an archaic and counterproductive requirement.

Under the new no-fault divorce process, couples will no longer have to put forward any reasons for the divorce and ticking a box confirming that the marriage has “irretrievably broken down” is now proof enough. Proceedings can be commenced straight away without making allegations of unreasonable behaviour or adultery, and without waiting for any periods of separation. The divorce can even be applied for jointly, which better represents that it is often a mutual decision. Further, if you apply for divorce alone, no consent to the divorce is required from the other party and it cannot be defended. The new process is however slightly longer as it

will not be completed in less than 26 weeks.

These changes aim to make divorce a more amicable process for separating couples. It is hopeful that such changes will reduce conflict and promote healthy post-divorce relationships from the start, particularly to the benefit of any children from the marriage.

Although the new process is still in its infancy, it has been positively welcomed by all. It appears that, by stepping away from the blame game that has always been associated with divorce, the law is finally starting to catch up with modern attitudes towards separation and family life.

No-fault divorce has enabled couples to now re-focus their energy and resources on those important issues such as the distribution of matrimonial finances. These arrangements still remain an obstacle to overcome in the divorce process as they are often complex and benefit from the advice of a specialist family lawyer. ☺



Liam Mennell is a solicitor at Glanvilles Damant specialising in Family Law.
Please get in touch on 01983 527878 and ask to speak with a member of the Family Team to arrange an initial fixed fee appointment.



Enjoy your conservatory all year round

**2 FREE
PANELS**

*Quote Ref
BEACON0722

• **WARMER IN WINTER** • **COOLER IN SUMMER**

*"It's the best home improvement we
have ever made. Our conservatory is
now our dining room in the garden."*

Mike Millis, Middleton On Sea

Our lightweight insulated panels make
your conservatory:

- **Warmer** in winter • **Cooler** in summer • **Reduce** bills
- **Quieter** in bad weather • Installed in less than a day

To find out more about the benefits that the Green
Space system can offer and see if your conservatory is
suitable for any potential subsidies, contact us now.



0800 08 03 202
www.greenspaceconservatories.co.uk

GRAND
DESIGNS LIVE

ideal
HOME SHOW

8K+ HAPPY
CLIENTS



Terms and Conditions apply.
Green Space UK, Unit 8 BH24 1PD, Registered
No. 8542786, as shown on FCA authorisation,
trading as Green Space UK, is a credit broker
and is authorised and regulated by the Financial
Conduct Authority. Applies to orders of 8 panels
or more. Not to be used in conjunction with any
other marketing offer



SHADY CHARACTERS

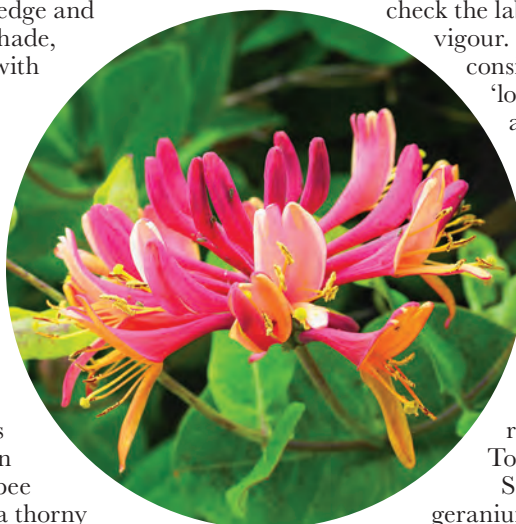
Got a shady garden? Assume you can't grow anything interesting? Not so, says Flo Whitaker. Many plants prefer life in the shade.

So long as they're sheltered from the worst weather, hydrangeas revel in damp, light shade. Climbing *Hydrangea petiolaris* will disguise an unappealing wall and offers a long season of interest, with crisp white flowers in early summer, good autumn leaf colour and self-clinging, (non-invasive!) cinnamon-coloured stems.

Honeysuckles are natural woodland dwellers that enjoy life on the shady side and the vast clematis family contains a few shade-tolerant types, including the long-lived, hard-working 'Elizabeth' – an appropriate planting choice to commemorate this Jubilee year.

For neatly clipped hedges and

topiary, nothing beats Yew, (*Taxus*) or Box, (*Buxus*), particularly in confined spaces. Tiny-leaved *Lonicera nitida* makes a dense hedge and thrives in deep shade, but grows stout with age, so requires more room. *Euonymus* comes in many forms, including silvery and golden variegated types that will illuminate gloomy areas. *Berberis*, with its tiny, nectar-laden flowers is a real bee magnet. This is a thorny plant, best kept away from pathways and suchlike, but it can be loosely clipped to make a good security or vandal-proof hedge.



Shady stalwarts such as violas, fuchsias and busy lizzies are hard to beat

Hollies, (*Ilex*) endure most situations but prefer slight shade. Some can potentially become very large, so check the label for height and vigour. If space is limited, consider a standard 'lollipop' specimen in a large pot. Hollies often require another holly nearby to cross-pollinate and produce berries, however, there are self-fertile forms available, including the excellent and reliable 'J.C. van Tol'.

Some hardy geraniums revel in light shade. 'Rozanne' and 'Orion' make large, vigorous clumps, whereas *Geranium phaeum*





(Impatiens) are hard to beat. Small-leaved ivies (Hedera), can be trained over pot edges or through wire frames to make topiary shapes. Lilies can take a surprising amount of shade and springtime bulbs such as snowdrops, (Galanthus), cyclamen and wood anemones positively revel in it.

Narcissi enjoy sunny locations, but, in gardening, there are always exceptions to the rules. Narcissi ‘Sailboat’ has multi-headed blooms in pale yellow and white and much prefers dappled shade. Another shade-loving rule-breaker is Pelargonium tormentosum, which produces furry scented

leaves and masses of tiny white flowers throughout summer. It’s not frost-hardy, so overwinter in a greenhouse or conservatory. It propagates easily from cuttings in spring, as does plectranthus ‘Nico’. Semi-trailing in habit, Nico’s handsome leaves have vivid beetroot red undersides; perfect for teaming up with

ferns and hostas. And don’t forget that old faithful, the spider plant, (Chlorophytum) which, like plectranthus, bleaches horribly in direct sunlight, but keeps its colours in light shade. A spider plant looks brilliant in a hanging basket and is a good summertime ‘project’ for a young, novice gardener. ☺

“
Berberis, with its
tiny, nectar-laden
flowers is a real bee
magnet
”



WIN! Can you spot the differences?



COMPETITION



Chale Green, Ventnor PO38 2JN
Tel: 01983 551443 Email: contact@stubbings-bros.co.uk
www.stubbings-bros.co.uk



HAYTER
MAKERS OF THE FINEST MOWERS

THIS MONTH'S PRIZES...

TERMS & CONDITIONS APPLY



Pair of tickets from Jack Up Events to Abba Chique
Friday 1st July
Courtesy of jackupevents.co.uk



Pair of Rhythmtree Festival Tickets
8th, 9th, 10th July
Courtesy of rhythmtree.co.uk



Sunday Lunch for two
Courtesy of the Village Inn Bembridge
to be taken on 12th July
01983872616
yeoldvillageinn.co.uk

PRIZE PREFERENCE (CHOOSE ONE ONLY):
1 ☐ 2 ☐ 3 ☐

NAME:

TEL:

ADDRESS:

POSTCODE:

E-MAIL:

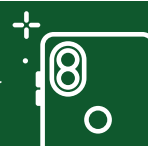
- ☐ I am happy to be contacted by the sponsors for marketing purposes
☐ I would like to receive Beacon Magazine's weekly email newsletter with more competitions

Closing date - 30TH JUNE 2022

Send your entries to: **IW Beacon Competition, 8-10 Dodnor Park, Newport, Isle of Wight, PO30 5XE**
When sending your entry to us you **MUST** ensure that you use the correct postage. Terms and conditions available on request.
Prizes must be claimed within 30 days of the draw date. Previous winners can be found on our Facebook and Twitter pages.
Winners will be contacted by phone.

Did you know...

You can take a photo on your phone and email your entry to win@iwbeacon.com.



SEAT MÓ



The new SEAT Mó

125

Seamlessly blends agile performance, dynamic looks, and low running costs. 100% electric.

Coming soon.

Register your interest. Call us today or scan the QR code opposite.

Snows SEAT Isle Of Wight

Forest Road, Newport, Isle of Wight, PO30 5QJ

Tel: 01983 535727 www.snows.co.uk/SEAT

