

EAST AND  
SOUTH WIGHT

Pick up your FREE copy

# Beacon

May 2022

JUBILEE RECIPES

CORONATION  
CHICKEN

HEIRLOOM  
TOMATO  
GALETTE

ISLAND STORY

SET SAIL TO  
RIVERFEST

INTERVIEW

MATT GOSS

HISTORY

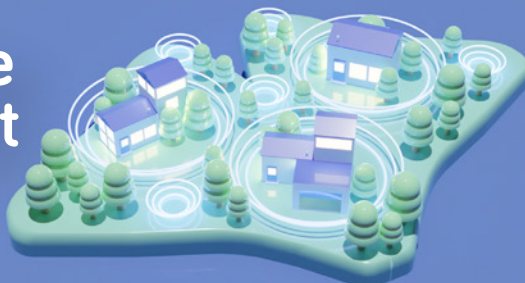
80<sup>TH</sup> ANNIVERSARY  
OF THE COWES BLITZ

SPRING  
*is in the air*

Made on the  
Isle of Wight

Island engineers, Island  
call centres, Island staff

Fibred areas only.



wightfibre   
*because we care*

Order online at [wightfibre.com](https://wightfibre.com)  
or call 01983 240240

A Different Kind of Broadband Full-fibre • Ultrafast • Future-proof



# Spring INSPIRATIONS

Delivering affordable luxury and  
over 40 years experience



[www.joedan.co.uk](http://www.joedan.co.uk)

Visit your local Design Centre.

Open Mon - Fri 9am - 5pm • Saturday by appointment only

5 Daish Way • Isle of Wight • PO30 5XB

t: 01983 825055

BOURNEMOUTH | ISLE OF WIGHT | ORPINGTON | TEWKESBURY | WINCHESTER

lusso  
ALUMINIUM



**JOEDAN**  
WINDOWS & DOORS





## Welcome from the EDITOR

This May, people from across the Island will be lacing up their walking boots and exploring hundreds of Isle of Wight walks, through fields and countryside, across beaches, woodland and historical sites.

I love the sound of the Bluebell Quest, starting from Shanklin Theatre, the Seaside Story Walk and the Squirrel Valley Trail. These are just a few of the amazing walks on offer with this year's Spring Walking Festival. You'll find more details on page 9.

This month's edition of Beacon will also bring you some royal recipes to prepare in celebration of Her Majesty The Queen's Jubilee, early next month. There's a great gardening page to teach you how to grow incredible edibles. And we take a look at this year's Riverfest, which takes place down on Newport Quay this month.

Have a wonderful May.

*Amy Shephard*

Editor amy.shephard@iwbeacon.com



- 5** Recipe: Heirloom Tomato Galette
- 7** Recipe: Coronation Chicken
- 9** Walking The Island: The Spring Walking Festival
- 11** The Entertainment Guide
- 13** Interview: Matt Goss from Bros
- 15** History: 80th Anniversary of the Cowes Blitz
- 18-19** Set Sail to Riverfest
- 22-27** News from Your Area
- 33** Gardening: Incredible Edibles
- 35** Spot the Difference Competition

# Beacon

MAGAZINE

IW Beacon Media Centre, 8-10 Dodnor Park, Newport, PO30 5XE

**CALL US**  
01983 433112

**FACEBOOK**  
iwbeacon

**TWITTER**  
@iwbeaconmag

**VISIT US**  
iwbeacon.com

**INSTAGRAM**  
@beaconiow

**EMAIL**  
hello@iwbeacon.com

**totalsensemedia**

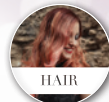


## Discover the New You!

# ANA

HAIR AND BEAUTY SALON

### Our Services



- Unisex Hairdressers
- Waxing Treatments
- Make Up
- Facials
- Manicures/Pedicures
- Microblading
- Eyelash Lift
- Eyelash Tint
- Eyebrow Shape/Tint
- Spray Tanning
- Blow Dry
- Haircuts
- Colours
- High Lights/Low Lights
- Perms
- Hair Treatments
- Indian Head Massage
- Hopi Ear Candles
- Keratin Smoothing Treatment
- Weddings

Call  
**01983 402694**  
to book an  
appointment today!

**£5 off**  
any treatment\*

\*Terms & Conditions: £5 off any treatment with this leaflet. Cannot be used with any other offer. One leaflet per treatment. Cannot be exchanged for money.



Open Tuesday - Friday 9am - 5pm. Saturday 9am - 1pm  
24 High Street, Sandown, Isle of Wight, PO36 8DE

## NEW at abi

Spring collection Shanklin

Ladies Boutique, stocking a range of clothing, footwear, handbags and accessories.



48 Regent Street, Shanklin PO37 7AA

**Tel: 01983 717676**

Find us on:  
**facebook**





Isle of Wight  
Pubs

# Discover a Career in Hospitality!

## Seasonal Chefs

### £14-£17<sub>ph</sub>

*Great Pay, Superb Benefits & Beautiful Venues*

**£100**  
Joining  
Bonus!

**Character Inns are a collection of six family-owned and run food-led pubs located throughout the Island.**

We are currently recruiting new people to build upon our existing teams. If you want to be part of a fun, dynamic pub group then we want to hear from you. We have many career opportunities, all offering unbeatable packages, plus...

- **25% Discount at all venues**
- **End of year bonus!**



*\*Salaries and Hourly Rates of pay are correct at time of going to press and represent maximum rates.*

**Download  
our brochure**  
for further details  
in a career with  
Character Inns.

[characterinns.co.uk/careers](http://characterinns.co.uk/careers)

**Managers &  
Head Chefs** up to **38k<sub>pa</sub>**

**Supervisors  
(Bar/Floor)** **£12.5<sub>ph</sub>**

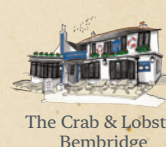
**Bar Staff  
& Waiting** **£10.5<sub>ph</sub>**

**Hot Side &  
Cold Side** **£12.5<sub>ph</sub>**

**Kitchen  
Porters** **£10<sub>ph</sub>**



The Bugle Inn  
Yarmouth



The Crab & Lobster  
Bembridge



The Buddle Inn  
Niton



The Sun Inn  
Hulverstone



The Kings Head  
Yarmouth



The Caulkheads  
Sandown





# Heirloom Tomato GALETTE



SERVES

6

## INGREDIENTS

### For the pastry

195g (7oz) plain flour,  
plus more for rolling  
out pastry  
115g (4oz) unsalted  
butter, cold and cut  
into cubes  
50g (1¾oz) freshly grated  
Parmesan cheese  
Zest of ½ lemon  
115ml (3¾fl oz)  
cold water  
½ tsp salt

### For the filling

115g (4oz) Gruyère cheese  
or another preferred  
cheese, grated  
340g (12oz) ripe heirloom  
tomatoes, sliced or  
halved if small  
1 tsp fresh basil,  
finely chopped  
1 tsp fresh rosemary,  
finely chopped  
Freshly ground black  
pepper and salt  
1 tbsp olive oil  
1 large egg, beaten

Galette is the French name for a freeform rustic tart. Adele Trathan suggests an heirloom tomato option, as it makes for a colourful creation with an easy to adapt filling, to suit personal preference by incorporating various seasonal vegetables and different cheeses.

## METHOD

**1** Put the flour, butter and salt into a large bowl and use fingertips to rub the butter and flour until it resembles breadcrumbs. Add the Parmesan cheese and lemon zest then gradually drizzle in the water mixing with a fork, until it starts to hold together as a dough. You may not need all of the water, then use your hands to form a ball. Wrap the dough in clingfilm and refrigerate for 1 hour or overnight.

**2** Preheat the oven to 200°C (180°C Fan, 390° F, Gas 6). Dust a clean work surface with flour and roll the pastry into a 12 inch circle. Transfer the pastry to a 10 inch round baking pan or low sided skillet.

**3** Cover the pastry evenly with the cheese leaving a 1 inch border all around. Arrange the tomatoes on top of the cheese, also leaving a 1 inch border.

**4** Brush the tops of the tomatoes with the olive oil then sprinkle the herbs over the tomatoes and season well with salt and pepper.

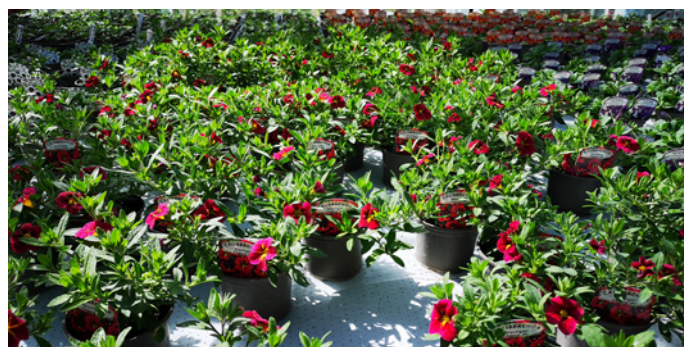
**5** Fold the border of the pastry inwards to cover the edge of the tomatoes all around. Brush the pastry edges with the egg and bake for 20-25 minutes until the dough is golden. Remove from the oven and allow to cool in the pan for 10 minutes, then slice and serve.



# Haylands Farm

34 Salters Road PO33 3HU Ryde, IOW.

Providing Training, Education & Work Experience  
for People with a Learning Disability



Haylands Farm have been busy growing an exciting range of new plants that are now ready to purchase to brighten your garden up this spring.

Open Monday to Friday 10am- 3pm and Sunday 10am-12pm.

Free delivery on orders over £30. You can order in person by visiting us at the address below, call or visit our facebook page, Binstead Post office also stock a variety of our plants to purchase. A 10% discount will be deducted with this voucher.



**Tel: 01983 566038**  
**[www.haylandsfarm.co.uk](http://www.haylandsfarm.co.uk)**

**10%  
OFF**

Haylands Farm would like to thank Binstead Post Office for their support during the pandemic





# CORONATION Chicken

Celebrate The Queen's Platinum Jubilee with this classic recipe that was created for the coronation in 1953. This version by Adele Trathan is based upon the original royal dish, and it might stir up a few memories... for those old enough to remember!

## INGREDIENTS

4 skinless chicken breasts  
2 tbsp coriander seeds  
1 cinnamon stick  
1 bay leaf  
1 tsp black peppercorns  
4 dried apricots, finely chopped  
4 spring onions, finely chopped

## For the Sauce

250g (9oz) mayonnaise  
100g (3½oz) crème fraîche  
or Greek yoghurt  
2 tbsp medium curry powder  
3 tbsp mango chutney  
1 tsp lemon juice  
a pinch of sugar  
salt and pepper

## METHOD

**1** Place the chicken breasts in a large saucepan and cover with cold water. Add the coriander seeds, cinnamon stick, bay leaf and black peppercorns. Bring to the boil and simmer for 15-20 minutes until the chicken is cooked. Drain and leave aside to cool completely.

**2** In a large bowl, mix all the ingredients for the sauce together and stir until they are well combined. Season to taste and add more lemon juice if required.

**3** Shred the chicken breasts using a pair of forks.

**4** Just before serving add the chicken to the sauce, along with the chopped apricots and spring onions. Stir well and check seasoning to taste.

**5** It's best served immediately but can be kept chilled in the fridge for an hour or two if required. This dish is so versatile, it can be used as a sandwich or baguette filling, or deliciously piled into baked jacket potatoes, or maybe even make it the centrepiece of a regal buffet.



SERVES

6



# RELIABLE. EXPERT. LOCAL.



Order fuel for your home, farm, or business today.

01983 298 015

[certasenergy.co.uk/my-business/fuelling-the-isle-of-wight](https://certasenergy.co.uk/my-business/fuelling-the-isle-of-wight)



## Time for Afternoon Tea

Buttery, crumbly fruit scones baked fresh today by Grace's Bakery



# Ye Olde Village Inn



61 High Street, Bembridge, PO35 5SF | Tel: 01983 872616 | [www.yeoldevillageinn.co.uk](http://www.yeoldevillageinn.co.uk)

### 7 DAYS A WEEK CURRIES

(Choose from Stig Sharer Deal)

### ANY 2 PIZZA & GARLIC BREAD

Authentic Pizzas to choose from  
- All 3 for £27.00

### MONDAY NIGHTS FREE FUN QUIZ & A PIZZA FOR £10

THURSDAY - SATURDAY 5-6PM

**START THE  
WEEKEND EARLY!**  
BUY 1 GET 1 FREE  
on selected cocktails

### FRIDAY & SATURDAY NIGHTS BANDS INSIDE FUNK DJs OUTSIDE

SUNDAYS 12.30-3PM  
**SUNDAY SOUL SESSIONS**  
LIVE MUSIC & SKA  
VINYL DJs  
Alternating weekly



**INTRODUCING LIVE MUSIC AND ENTERTAINMENT  
BACK INTO THE OVI FRIDAY AND SATURDAY NIGHTS.**

LAST FRIDAY OF EVERY MONTH  
**SILENT DISCO**

13-15TH MAY  
**RYDABUS BEER  
FESTIVAL**



2ND JUNE  
**STREET FAIR FOR  
THE QUEENS JUBILEE**

**ALL YOUR REGULAR FEATURES V.I STYLE PLUS MORE TO COME. WATCH THIS SPACE!**





## Sock Hunting Story Walk

Sunday May 15th

**J**oin Sue Bailey the storyteller as she takes you on a family-friendly story walk around Northwood House grounds this month. Do you have many odd socks? Sue-the-storyteller has. You'll need sharp eyes and keen ears to hear the clues in the stories she tells, as she leads a search around the grounds of Northwood House to find the missing socks. ☺

Voluntary donation requested but not obligatory. Suggested donation £5/child to Northwood House Charitable Trust. Donate online at [northwoodhouse.org/charitable-trust](http://northwoodhouse.org/charitable-trust)

**Start time: 11am**

**Start location: Meet by the war memorial in Northwood House grounds.**

**Duration: 1.5 hours**

**Length: 1 mile**



## A selection of Spring Walking Festival walks

**Saturday 7th May**

**The Myths And Legends Of Brading**

Start time: 10.00am Start location: Car park at Brading Roman Villa, PO36 0EN

Duration: 3 hours. Length: 3.5 miles

**Sunday 8th May**

**Mountbatten Walk The Wight**

Start time: Between 06.00am and 08.00am

Location: Bembridge (near Bembridge Airport), PO35 5PW

Duration: 6-12 hours. Length: 26.5 miles  
Shorter walks available.

**Monday 9th May**

**Two Sainly Lighthouses**

Start time: 10.00am Start location: Blackgang Viewpoint Car Park, PO38 2JB

Duration: 5 hours. Length: 6 miles

**Tuesday 10th May**

**Squirrel Valley Trail**

Start time: 1.30pm Start location: Naturezones, Blackwater, PO30 3BP

Duration: 2 hours. Length: 3.5 miles

For the full list and further information, availability and to book each walk, please visit [isleofwightwalkingfestival.co.uk](http://isleofwightwalkingfestival.co.uk).

**Wednesday 11th May**

**Bluebell Quest From Shanklin**

Start time: 10.30am Start location: Shanklin Theatre, PO37 6AJ

Duration: 4.5 hours. Length: 9.5 miles

**Thursday 12th May**

**Culver Cliff At War**

Start time: 11.00am Start location: Bembridge Fort Car Park, Culver Down Rd, PO36 8QY

Duration: 2.5 hours. Length: 2.5 miles

**Friday 13th May**

**Eco Valley Trail**

Start time: 10.00am Start location: Naturezones, Blackwater, PO30 3BP

Duration: 2.5 hours. Length: 5 miles

**Saturday 14th May**

**Donkey Sanctuary To Shanklin**

Start time: 11.00am Start location: Isle of Wight Donkey Sanctuary, PO38 3AA

Duration: 4 hours. Length: 6 miles

**Sunday 15th May**

**Carisbrooke Castle Circular**

Start time: 10.30am Start location: Carisbrooke Priory Car Park (Free), PO30 1YS

Duration: 4 hours. Length: 6 miles

## The Bonchurch Family Treasure Hunt - A Quiz For All The Family

Every day throughout the walking festival

A quiz sheet of 30 questions about Bonchurch Village has been devised. Answers can be found by walking around the village in your own time, with other answers found online (for any rainy days!). Quiz sheets can be purchased for £5 from Rock Villa in the Village Road from 5th May and during the IW Walking Festival. (More venues to purchase the sheets will be added nearer the time, see [bonchurchvillage.co.uk](http://bonchurchvillage.co.uk) events page for details). Each quiz sheet is numbered and goes into a draw for a £40 Waitrose token which will be sent by post to the winner. The winning number will be announced on the website (on the events page) and Bonchurch village Facebook page from the 17th May 2022. Quiz answers will be listed on the Bonchurch website events page for a two week period from the 17th May. Proceeds go to the Bonchurch Community Association for the enhancement of the village.

This quiz can be taken on at any time from 7th-15th May 2022 at your own time and pace.

**Start location: The Pond, Village Road, Bonchurch, PO38 1RG**

**Duration: Approximately 3 hours. Length: 3 miles**

**Price: £5 per quiz sheet.**

## Brading Marshes Nature Walk with Natural Links

Saturday 7th May

One of the best birdwatching sites on the Isle, with wildfowl and waders, herons and egrets, birds of prey and reedbed specialists such as Reed, Sedge & Cetti's Warblers, as well as a wide range of other wildlife and wildflowers.

**Start time: 9.30am**

**Start location: St. Helens Green Car Park, PO33 1UJ**

**Duration: 4.5 hours. Length: 6 miles**

**Price: Free.**



**NOW OPEN!**

**Mon-Fri: 08:30 - 17:30**

**Sat: 08:30 - 16:00**

# Elite Garages

**44-50 South Street, Newport, PO30 1JG**

**01983 478161**

**MOT Tyres Brakes Exhausts  
Clutches Servicing Diagnostics  
Batteries Alignment Air Con  
Electric Vehicle Servicing**

**Scan for  
more info!**



**FREE MOT**  
with a  
**Premium Service**



Terms and conditions apply. Valid until 31/07/22.

**£10<sup>off</sup>**  
**Rapid** Tyres

£10 off when you purchase  
four Rapid tyres, or £5 off  
when you purchase two  
Rapid tyres.

Terms and conditions apply. Valid until 31/07/22.



**Book your vehicle a  
FREE Spring**  
Car & Tyre Safety Check

We'll check your tyres, battery,  
coolant/ anti-freeze, wiper  
blades, washers & lights to  
keep you moving this spring!

Terms and conditions apply. Valid until 31/07/22.

**15% OFF**  
**Clutches  
& Brakes**

**15% off new fitted brakes**  
**15% off a new fitted clutch**

Terms and conditions apply. Valid until 31/07/22.





# The Entertainment GUIDE

Visit [iwbeacon.com](http://iwbeacon.com) to see our full events guide

Join GP Sport on Saturday 11th June 2022 for a unique trail marathon or long distance walk across the Isle of Wight at night.

Run or walk from The Needles to Yaverland Bay to raise funds for Aspire Ryde. Aspire Ryde is a community hub, providing services throughout the week in a redundant church building which now buzzes with activity.

Participants will be issued with a map and a GPX file, and to help with navigation, junctions on the course will be way marked with directional arrows. There will also be a number of manned checkpoints along the route with snacks and water, and full safety cover is provided.

Not ready for a full marathon distance? Why not tackle Challenge the Wight Half? Starting at The Needles and finishing at the Carisbrooke Castle midway point, or starting from



11TH JUNE  
STARTING  
AT THE  
NEEDLES

Carisbrooke Castle you can join the challenge for the final 14 miles and finish alongside the marathon distance on Yaverland seafront for a bacon butty and a well earned cup of tea.

All participants will receive a medal upon completion plus a complementary breakfast is provided at the Yaverland Bay finish.

Register at [www.gpsport.org/event/challenge-the-wight-2022/](http://www.gpsport.org/event/challenge-the-wight-2022/)

## Spontaneous Potter...The Unofficial Improvised Parody

Grab your wands, don your house robes, and apparate yourselves to the box office! A very magical improv show awaits...

Spontaneous Potter: The Unofficial Improvised Parody is an entirely improvised wizarding comedy play, based on an audience suggestion of a fanfiction title - with live musical accompaniment! Age rating: 16+. [medinatheatre.co.uk](http://medinatheatre.co.uk)



MAY 27TH  
7.30PM  
MEDINA  
THEATRE

## Free Jubilee "Picnic in the Park" celebration at Northwood House

Bring some family, friends and a picnic to join in the official free community celebration of the Queen's Platinum Jubilee at Northwood House and Park and Cowes on Sunday 5th June from 12pm to 5pm. There will be live music on the Northwood House lawns, as well as a kid's arena with entertainment and activities including fun races and dancing. There will be a number of Island charities showcasing themselves too as well as a licensed bar, bbq and tea tent...

plus a huge fun dog show with lots of classes, so bring your dog too! Don't forget to dress up in something red, white or blue to mark the occasion.

More information at [northwoodhouse.org/events](http://northwoodhouse.org/events)



JUNE 5TH  
12-5PM

## Rydabus 2022

Based in and around Ryde, Rydabus involves local attractions and events and provides a timetable of free vintage services. New for 2022, Rydabus is going green and has two Park N Ride sites. ParkNRide South is at the Donkey Sanctuary, Wroxall and ParkNRide West is at Retro Staycations, Ashey. Park your car at these attractions and take the free bus into Ryde. Programmes available now online, at almost 40 venue partners, and the bus museum. Get ahead and plan your weekend. [www.rydabus.co.uk](http://www.rydabus.co.uk)



14TH &  
15TH MAY

## Commemorating the Defence of Cowes by the ORP Blyskawica

### Summary of key events

East Cowes Town Hall.  
10am to 4pm: Exhibition on ORP Blyskawica from Saturday 30 April to Monday 2 May inclusive and Saturday 7 May (to 6pm): Organised by East Cowes Heritage Centre

### Wednesday 4 May

East Cowes Town Hall  
6.30pm: Blitz Talk and Film 'Voices of the East Cowes Blitz'.

### Thursday 5 May

8am-10am: Arrival of Polish Naval Vessel ORP Wodnik at Cowes Roads.

The Royal Yacht Squadron will greet the Polish warship with a five gun salute.  
2pm: Plaque unveiling in Kings Square, East Cowes

2.30pm: Guided blitz walk. From Kings Square to Kingston Cemetery  
4pm: Memorial service at Kingston Cemetery

6pm -7pm: Welcome reception by Brigadier Maurice Sheen CBE QVRM TD DL, Her Majesty's Vice Lord-Lieutenant of the Isle of Wight. By invitation.

7.30pm: Gala Piano Recital at the Royal Yacht Squadron (RYS) by Eva Maria Doroszkowska, granddaughter of Captain Francki, Commander of the ORP Blyskawica on the night of the Blitz 4th May 1942.

Online booking for the recital and optional supper after open at [www.ticketsource.co.uk/islandconcerts](http://www.ticketsource.co.uk/islandconcerts)

4TH - 8TH  
MAY

### Friday 6 May

East Cowes Town Hall  
7.30pm: Concert: Never Forgotten Polish and English Music Katy Carr and Medina Marching Band in support of the Ukraine Refugees in Poland. Online booking for the concert open at: [www.ticketsource.co.uk/islandconcerts](http://www.ticketsource.co.uk/islandconcerts)

### Saturday 7 May

Northwood Cemetery, Cowes - Exhibition on the Blitz  
1pm-4pm: Kings Square, East Cowes Performances by: Little Karpaty & Karolinka Dancers. Polish food market.  
2.30pm: Cowes Blitz Walk. From the war memorial in Northwood Park to Northwood Cemetery.  
4pm: Northwood Cemetery, Cowes Rededication ceremony of the refurbished communal war grave.  
7pm-11pm: 1940s Dance at East Cowes Town Hall. Period dress encouraged. Tickets £5 available from The Heritage Centre, Flix Hairdressers East Cowes or on the door.

### Sunday 8 May

12noon: Short remembrance ceremony at Francki Place, Cowes. Cowes Parade Commemoration 1.30pm: 80th Anniversary Ceremony of the defence of Cowes and East Cowes. Inauguration of the new Consulate of the Republic of Poland in Cowes in the presence of Poland's Ambassador to the United Kingdom. The Royal British Legion Band will play in support at the Cowes Parade.



Photo by Robert Bannach



# COMPTON & LAWRENCE

Garden Clearance & Property Maintenance

*All aspects of groundwork undertaken*



**DOMESTIC & COMMERCIAL  
ISLE OF WIGHT & MAINLAND**

- Garden/grounds clearance
- End of tenancy clearance/maintenance
- Property maintenance ● Stump Grinding

*And much more!*

**Tel: 07926211477**

Email: [R.L.C.Services@outlook.com](mailto:R.L.C.Services@outlook.com)



UPVC Doors & Windows, Conservatories and Fascias  
& Gutter Installations on the Isle of Wight.

CALL US ON **01983 810 888**

[millenniumwindowsiow.co.uk](http://millenniumwindowsiow.co.uk) [facebook.com/millwindows](https://facebook.com/millwindows)



# WOULD YOU PUT IT DOWN TO BANTER?

**STEP UP. SPEAK UP.  
END SEXUAL VIOLENCE.**

**SEXUAL VIOLENCE STARTS SOONER THAN YOU THINK.  
BY THINKING ABOUT OUR OWN ACTIONS AND CHALLENGING  
ATTITUDES WE CAN MAKE OUR COMMUNITY SAFER FOR EVERYONE.**

[saferportsmouth.org.uk/stepup](http://saferportsmouth.org.uk/stepup)



[iow.gov.uk/communitysafety](http://iow.gov.uk/communitysafety)



THE ISLAND'S FAVOURITE...

# isle of wight radio talks to MATT GOSS

Lead singer of iconic 80s duo, Bros, Matt Goss talks 80s trends, coping with Covid — and tells Isle of Wight Radio host, Jenni Costello, what inspired his new album, *The Beautiful Unknown*.

**JENNI:** Congratulations on your new album, *The Beautiful Unknown*. And I love the new single *Better with You*. It's so 80s and it's so upbeat.

**MATT:** Yeah I just had this overwhelming feeling that was similar as when I was writing part of those number one songs. And I just know in my heart, this is a big, big hit record. And I'm very proud of it.

**JENNI:** So how did you cope with lockdown? Because I read that a lot of the inspiration for this album came out of that time.

**MATT:** I completely fell out of love with music. I didn't want to even touch my piano, my guitars. I'm a multi-instrumentalist. I love building tracks, but I didn't even want to go into my studio for months. My sole mission was to plough through my fears and my worries and just make sure the audience were transported into a better place.

**JENNI:** I've heard that you did reach out to a lot of your fans during lockdown, didn't you? And helped quite a lot of them through it.

**MATT:** Yeah, I made a promise to them that I would go live every day, until we saw some kind of light at the end of the tunnel. I ended up going live over 300 times. I called four or five fans. There was one time when a girl was going through a very, very troubling time at the highest level. And 22,000 people joined us on that live. And we lifted her spirits. And she then later went on to tell a national newspaper about what happened. And she said that it saved her life. It gave me great purpose. And those lives. They're the reason why I sat down and wrote a song called *Shipwreck*. *Shipwreck* is about that moment. My imagery was that dismantling of a shipwreck underwater in slow motion. And that's how I felt. I felt dismantled. And sitting down at the piano made me feel that I could express that. I called the legendary Babyface. And he said, "Man, we've got to record this."

**JENNI:** So the title of the album, *The Beautiful Unknown*, what do you mean by that?

**MATT:** *The Beautiful Unknown* is part of my inner philosophy. I use it a lot in my poetry. In poetry you're never imprisoned. When it comes to similes, metaphors, analogies, you can just lose yourself. It can be terribly dark or terribly uplifting. But I use that phrase a lot because I believe



*The Beautiful Unknown is part of my inner philosophy*

that we've been programmed to fear the unknown in some ways, rightfully so. But my wish would be that this becomes a very loved British pop record. Also because of the sensibility and the honesty about it, and what it addresses. And it is wrapped up in these beautiful pop melodies, but hopefully, if we collectively all believe that the unknown is a beautiful thing, that there's something not to be fearful, I do truly believe in energy. And I think, on an energetic level, if we all collectively move in one direction and say, hey, listen, it's gonna be alright. That is exactly what will happen.

**JENNI:** So you're moving back to the UK. Are you going to miss LA and Vegas?

**MATT:** I'm living by-coastly I'm going to live in LA and London. I don't think I'll ever come back to one place. I just think it's in my blood. My mum was a bit of a gypsy and I feel the same. I am received like a member of the family in this country. If you walked through any street with me, people will talk to me with an immediacy of familiarity. Emotionally it's very comforting.

**JENNI:** Looking back to those golden days of the late 80s. Tell me about your most memorable moment on *Top of the Pops*.

**MATT:** I think the most memorable moment on *Top of the Pops* is simply the

first time you get that call. And you are just a regular guy with a record out and you're watching that show. It was a TV religion. You were not British if you didn't know *Top of the Pops*. But that very first *Top of the Pops* is a pinch me moment. And to this day, it's a moment I'll never forget.

**JENNI:** Why do you think the 1980s were so special?

**MATT:** Back then, you get *She Drives Me Crazy* from the *Fine Young Cannibals*. You get *INXS*. You get *Sinead O'Connor* you get *Ultravox*, you get *Duran Duran*, you get *Bros*, you get all these different sound in bands that are the 80s and nobody tried to write a song that sounded like somebody else. You would get a song just smack you in the face, you know, where did this song come from. In the 80s less was just less. I am a big lover of less is more when it comes to style and you know the way fashion is. But less was just less in the 80s and it was unashamedly beautifully massive and manic and rock and roll. That era and that band in that time has given me some incredible things to be grateful for.

**JENNI:** Everybody was so original, and all the songs are so original, and you were like nobody else. Nobody else was like *Bros*, which is fantastic.

**MATT:** The thing about *Bros* is there was a uniform. If you think about it... ripped jeans, or just *Levi's* white t-shirt, bandana and a biker jacket, or bomber jacket. And our first record, just in Britain alone, 2.2 million and getting close to 10 million copies worldwide. That first record, it was an incredible feeling to be part of that movement. And just as important as the music, the uniform that was created. And in many ways I still think that we're responsible for a lot of moves in fashion.

**JENNI:** Oh definitely all the *Bros*ettes copying everything you wear. And talking of *Bros*ettes, are you going to be doing another tour together?

**MATT:** I think Luke's right to say this, we won't tour until we do another record because we vow that we would never break up again. So I am still the lead singer of *Bros* we are still a pop supergroup. We want to continue to play venues like the *02*. But we do not want to go out without new music. But that is on the cards next year. Yeah. 🎵



## OUR APPRENTICES

# 98%

ACHIEVE A PASS  
at End Point Assessment

# 97%

REMAIN IN  
EMPLOYMENT  
upon completion

# 98%

WOULD  
RECOMMEND US  
to others

AND 0% PAY TUITION FEES!

DON'T  
MISS OUR  
**OPEN  
EVENTS**  
REGISTER  
NOW

# CHOOSE AN APPRENTICESHIP THAT GETS RESULTS

## APPRENTICES AND EMPLOYERS CONFIRM THAT TRAINING WITH HTP REALLY WORKS

It's the best start or boost for your career. You'll earn while you learn, with a real job and great support.

Getting your career moving means big decisions, but choosing HTP for your Apprenticeship is the easiest one you'll make.

Our performance and approval ratings speak for themselves, with Apprentices and employers consistently scoring HTP much higher than the national averages.

Our track record of delivering high quality training, resulting in industry-recognised qualifications, means you're in safe hands.

We've been working with employers on the Island and across the south for more than 20 years. With a wide range of Apprenticeships to choose from, our super friendly independent careers advisors can help you to find your best career path.

So don't wait. Talk to us now. We'll get things started, so you're all set for your Apprenticeship, whenever you're ready.

**Talk to our advisors today for independent, expert help that's tailored just for you.**

HTP Apprenticeship College • Main Campus: The Old Grammar School, St James Street, Newport, PO30 5HE

**Visit [http.ac.uk](http://http.ac.uk) • Call 01983 533926 • email [info@http.ac.uk](mailto:info@http.ac.uk)**



# 80<sup>TH</sup> ANNIVERSARY of the Cowes Blitz

On the night of the 4th May 1942, 160 German bombers arrived off Cowes. Over 70 people of Cowes and East Cowes died that night and many more were injured — but the Polish destroyer defended East and West Cowes from certain obliteration. This month marks 80 years since that fateful night.

**O**RP Błyskawica, along with her sister ship ORP Grom, were built in the local shipyards of J S White and were the world's fastest destroyers when launched; Błyskawica achieving 41.5 knots at her peak. Nowadays she lies in the port of Gdynia, Poland, where she's an immaculately preserved floating museum having received over 7 million visitors. She's the pride of Poland's maritime history. The defence of Cowes by Błyskawica was brought about by her being in port for re-armament, enabling her to defend our towns throughout the night of the raid.

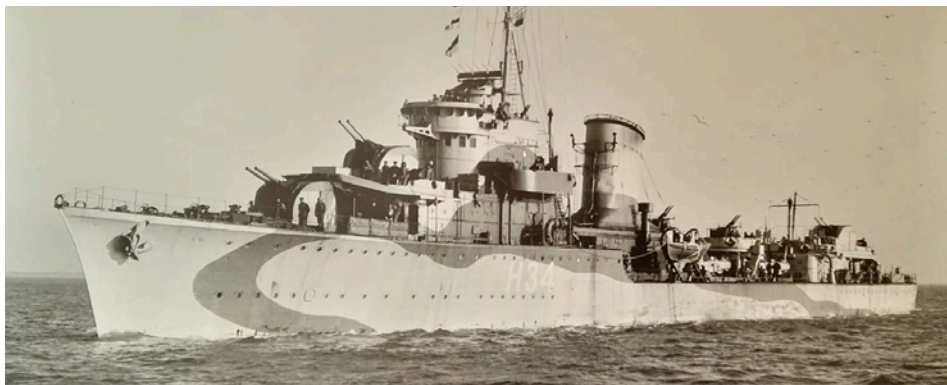
On April 28th six German bombers made a hit and run sortie on Cowes, and nearly sank ORP Błyskawica. After this attack Cpt Francki, the ship's commanding officer organised ammunition to arrive from Portsmouth. This was against Admiralty regulations as the ship was supposed to be disarmed when undergoing a refit.

On the night of the 4th May 160 bombers arrived off Cowes. The ORP Błyskawica's anti-aircraft guns fired without a pause. Hands were scalded and gun barrels grew so hot that seawater was gathered in buckets to cool them down. The ship's crew lit smoke canisters in an attempt to obscure the towns from its attackers. Large calibre guns were used to force the Luftwaffe to fly higher, affecting the accuracy of its bombing.

The Free French Naval units also opened up fire with smaller calibre weapons. Over 70 people of Cowes and East Cowes had died that night and many more were injured. At dawn emergency services from all over the Island raced in to help, and Polish sailors from ORP Błyskawica joined them, acting as firemen and diggers.

ORP Błyskawica was the only Polish vessel to have been awarded with the Gold Cross of the Virtuti Militari Order, the highest Polish military decoration.

Early May brings about the commemoration of the 80th anniversary of the defence of Cowes and East Cowes by the Polish destroyer. Annually, the Friends of the ORP Błyskawica Society hold a ceremony on Cowes Parade to mark the date. The Cowes-based organisation aims to make the 80th anniversary an important



event over a period of five days starting on the evening of the 4th May until the end of Sunday 8th May. The Polish government has taken great interest in this anniversary event and members of the society met with Poland's Ambassador to Great Britain at the embassy, where they were offered liaison and support for the forthcoming commemoration.

However, due to the situation in the

**ORP Błyskawica was the only  
Polish vessel to have been  
awarded with the Gold Cross of  
the Virtuti Militari Order**

Ukraine and the refugee exodus into Poland, the Polish Ministry of Defence much regrets that the hoped for Polish Naval Band will not be able to attend the 80th commemoration this year. ③



Photo from the Friends of Błyskawica collection

## 80TH ANNIVERSARY EVENTS

**30th April-2nd May 10am-4pm and Saturday 7th May until 6pm:** ORP Błyskawica Exhibition, East Cowes Town Hall organised by East Cowes Heritage Centre.

**Wednesday 4th May 6.30pm:** Blitz Talk in East Cowes Town Hall

**Thursday 5th May 8am-10am:** Arrival of ORP Wodnik at Cowes Trinity Buoy.

**2pm:** Unveiling of commemorative plaque in Kings Square, East Cowes.

**2.30pm:** Guided Blitz Walk, East Cowes

**4pm:** Memorial Service at Kingston Cemetery.

**6pm:** Welcome reception for Polish Navy officers at the Royal Yacht Squadron, Cowes (by invitation)

**7.30pm:** Piano concert by Eva Maria Doroszkowska at the Royal Yacht Squadron. Tickets available.

**Friday 6th May:** 7.30pm East Cowes Town Hall

**Concert:** Never Forgotten Polish and English Music Katy Carr and Medina Marching Band. Tickets available.

**Saturday 7th May:** 10am-6pm: Northwood Cemetery - Exhibition on the Blitz

**1pm-4pm:** Kings Square, East Cowes. Performances by: Little Karpaty & Karolinka Dancers. Polish food market.

**2.30pm:** Cowes Blitz Walk. From the war memorial in Northwood Park to Northwood Cemetery.

**4pm:** Northwood Cemetery. Rededication ceremony of refurbished communal war grave.

**7pm-11pm:** 1940s Dance, East Cowes Town Hall. Tickets £5

**Sunday 8th May:** 12pm: Remembrance ceremony at Francki Place, Cowes.

**1.30pm:** 80th Anniversary Ceremony. Inauguration of the new Consulate of the Republic of Poland in Cowes. The Royal British Legion Band will play in support at the Cowes Parade.

Full programme can be found on Facebook: The Friends of The ORP Błyskawica Society [www.blyskawica-cowes.org.uk](http://www.blyskawica-cowes.org.uk)

MORE  
DETAILS  
ON  
PAGE 11



# AGED OVER 55? - EVER THOUGHT ABOUT A LIFETIME MORTGAGE?

## WHAT IS IT?

A lifetime mortgage lets homeowners aged 55+ to take cash from the value of their home to use in retirement.

The money can be used how they wish, for example for:

- Home improvements.
- Holiday away.
- Financially supporting grandchildren.

You borrow some of your home's value as a lump sum or alternatively as small regular amounts. It is essentially an interest only mortgage, fixed for life, which does not require monthly repayments, until you die/move into long term care. Some providers offer an inheritance guarantee, which ensures you can leave an inheritance.

## WHAT ARE THE BENEFITS?

- Tax free cash.
- Flexible monthly payments or no monthly payment option.
- No requirement to downsize.
- Draw down facility options.
- Early repayment options.
- No negative equity guarantee.



**GET IN TOUCH TO SEE IF A LIFETIME MORTGAGE COULD WORK FOR YOU.**



(0) 1983 616666

[www.prospectmortgage.co.uk](http://www.prospectmortgage.co.uk)  
[info@prospectmortgage.co.uk](mailto:info@prospectmortgage.co.uk)

Prospect Mortgage Services Ltd are authorised and regulated by the Financial Conduct Authority 647962. Prospect Mortgage Services is not responsible for, nor does the Financial Conduct Authority regulate advice given with regard to taxation matters. Your home may be repossessed if you cannot keep up the repayments on any mortgage or other loan secured upon it.



# “The hospice is one of the friendliest places I have ever worked”

**Tracey Richards’ retirement sounds idyllic. Quality time spent with her partner and sons watching football, weekly coffee catchups with friends, trips to the theatre, and long walks with her Jack Russell, Ozzie.**

**B**ut despite having a full schedule that includes the occasional holiday somewhere hot and sunny, Tracey, 59, from Ashey, Ryde, volunteers every week to support Mountbatten.

“I moved to the Island in 2017 and knew I wanted to do some volunteer work to support a local charity,” Tracey said, speaking from the inpatient unit at Mountbatten, where she helps every Thursday. “I chose Mountbatten because it is a worthwhile cause and gives much-needed support to people who are dying, and their families.”

Mountbatten relies on the generosity of people like Tracey, whose support enables them to provide the best possible care for people across the Island.

“Giving something back is so rewarding. It makes you appreciate what you have and that others are suffering and need your help. I get a great sense of achievement from giving my time to support others.”

Volunteering is a great way to enhance your CV, build your experience, boost your social life, and give back to your community. As well as volunteering on the inpatient unit, Tracey is also a Mountbatten Neighbour and visits Angie once a week to keep her company.

Angie is in her 70s and her husband recently died. She has regular bereavement counselling with Mountbatten alongside a weekly visit from Tracey.

“We sit and chat and put the world to rights,” Tracey said.

Mountbatten Neighbours are a group of trained volunteers who offer their



time, companionship, and support to people living near them who have serious illnesses, or who are older.

The project aims to keep people connected to their community and protect them from loneliness and isolation.

“I love being a Neighbour and knowing I’ve made a difference to Angie’s day. And the friendship we have

**“I would recommend volunteering with Mountbatten to anyone. Being part of a community and giving back selflessly. It will enrich your life”**

developed is important to both of us,” said Tracey.

Back on the inpatient unit, Tracey is preparing for her afternoon shift. “I serve lunch to patients and drinks to their visitors, checking on them regularly to see if I can get them anything. I love stopping for chats as I go round.”

“The hospice is an amazing place.

Whilst there is sadness there is also happiness and laughter. I meet wonderful people – patients, families, and staff. It is one of the friendliest places I have ever had the pleasure of working in.”

With the demand for their services increasing rapidly, Mountbatten needs more people like Tracey to give their time, creativity, experience, and knowledge to fill a wide range of volunteer roles. There are opportunities to fit whatever time you have available, and it is flexible to fit with your life. And as Tracey says, there are lots of benefits for you, too.

Join Tracey and the amazing team of Mountbatten volunteers.

**Visit [www.mountbatten.org.uk/](http://www.mountbatten.org.uk/) volunteer to find out more.**







Saturday, May 14<sup>th</sup>  
Newport Quay  
10am-4pm

# Set sail to RIVERFEST

NEWPORT QUAY • ISLE OF WIGHT

**Riverfest — the popular free Newport event — is back for 2022, with new organisers at the helm.**

**R**iverfest was launched in 2008 by the Isle of Wight Council, before being taken over by The Footprint Trust in 2010.

Due to the coronavirus pandemic, the event had to be cancelled in 2020 and 2021. During this period, the Trust's main work in promoting energy efficiency in homes and assisting Islanders in fuel poverty, grew substantially. The Trust decided it was time to hand Riverfest onto another organisation, so they could focus on their core work.

Following discussions with Newport Carnival and Community Events

Association's Committee, the charity has now formally handed over the event.

Riverfest was organised by the Footprint Trust's General Manager, Ray Harrington-Vail, and his staff and volunteers. Over the past 10 years, it has raised thousands of pounds for charities and helped promote local businesses, given a platform to young performers, and raised the profile of the importance of wetlands, water efficiency and the River Medina.

Speaking on behalf of The

Footprint Trust, Ray Harrington-Vail, said: "It has been a pleasure in seeing this event grow and achieve so much. We are very grateful to Newport and Carisbrooke Community Council for all the support over the years — and to the thousands of local people who have supported Riverfest.

"We are assisting the carnival committee during this transition and wish Paddy McHugh and his team every success as they take this event forward."

Speaking for Newport Carnival and







Community Events Association, Paddy McHugh, said: "As soon as Newport was approached by The Footprint Trust, the committee was all too keen to take on such a long-standing popular event."

"Seeing as it is Newport Carnival's 100th anniversary this year, as well as being offered this fantastic event, the committee felt it was time to change the carnival's name slightly to better reflect our identity and purpose."

"Newport Carnival's umbrella name is now Newport Carnival and Community Events Association - with the carnival, Riverfest

*As soon as Newport was approached by The Footprint Trust, the committee was all too keen to take on such a long-standing popular event*

and other events running under this name."

Paddy added: "I have personally helped The Footprint Trust over the past decade with the running of the event, and can see how valued it is to the local community."

"On behalf of Newport Carnival and Community Events Association, we thank Ray and his team for allowing us to hopefully continue Riverfest how it used to be, like it was prior to the two-year break as a result of the pandemic."

More information can be found at [riverfest.org.uk](http://riverfest.org.uk) or by emailing [info@riverfest.org.uk](mailto:info@riverfest.org.uk).



## A FUN-FILLED FAMILY DAY OUT

- David Randini
- Funfair rides and pirate's parade
- Craft stalls
- Commercial traders
- Medina Marching Band
- Vectis Corp or drums
- Flash Kirby
- Irish dancers and more
- Vintage vehicles
- Riverside Centre open with more craft stalls inside.
- Charity stalls

NEWPORT  
CARNIVAL  
SATURDAY, JULY 23<sup>RD</sup>  
NEWPORT  
ILLUMINATED  
CARNIVAL  
THURSDAY,  
AUGUST 25<sup>TH</sup>



# Enjoy your conservatory all year round



**2 FREE  
PANELS**

\*Quote Ref  
BEACON0822



• **WARMER IN WINTER** • **COOLER IN SUMMER**

*"It's the best home improvement we  
have ever made. Our conservatory is  
now our dining room in the garden."*

Mike Millis, Middleton On Sea

Our lightweight insulated panels make  
your conservatory:

- **Warmer** in winter • **Cooler** in summer • **Reduce** bills
- **Quieter** in bad weather • Installed in less than a day

To find out more about the benefits that the Green  
Space system can offer and see if your conservatory is  
suitable for any potential subsidies, contact us now.



**0800 08 03 202**  
[www.greenspaceconservatories.co.uk](http://www.greenspaceconservatories.co.uk)

GRAND  
DESIGNS LIVE

ideal  
HOME SHOW

8K+ HAPPY  
CLIENTS



Terms and Conditions apply.  
Green Space UK, Unit 8 BH24 1PD, Registered  
No. 8542786, as shown on FCA authorisation,  
trading as Green Space UK, is a credit broker  
and is authorised and regulated by the Financial  
Conduct Authority. Applies to orders of 8 panels  
or more. Not to be used in conjunction with any  
other marketing offer



# Peter Gets a Lift

## Thanks to Deltron Lifts Coastal Ltd

Lyn and Peter Barsdell were some of our lucky winners, who won a free stairlift, complete with free installation, courtesy of Deltron Lifts Coastal.

We asked back in December whether you knew anybody who would benefit from having a FREE stairlift installed? We had lots of great entries, and although we would have liked to have given away a stairlift to every one of them, Deltron Lifts selected two deserved winners.

Lyn entered for her husband Peter, who was struggling to get himself upstairs because he had limited movement in his hips, due to Osteoarthritis.

Lyn said: "The stairlift is all fitted and is amazing. The guys that fitted it were lovely, very kind towards my Peter. They really hard right and



and helpful husband, worked to get it all explained

everything we needed to know about the way it worked.

"My husband was very emotional about receiving this amazing prize that will make his life so much easier to deal with. So from the bottom of my heart I cannot thank you enough for picking me as your prize winner."

Here's Lyn and Peter on the day their stairlift was installed, with the wonderful team at Deltron Lifts Coastal.



## Elevator & Escalator Servicing and Maintenance

Around the South Coast and Isle of Wight



### Services we offer...

- Lift service/Maintenance
- Lift Repairs
- Lift Refurbishment
- Lift Installation
- LOLER Inspections
- All Escalator Works
- Maritime (Ships) Lift Works
- Scenic Lift Glass Cleaning



Call us on: 01983 722713 Email: [coastal@deltronlifts.co.uk](mailto:coastal@deltronlifts.co.uk) Visit: [deltronliftscoastal.co.uk](http://deltronliftscoastal.co.uk)

Office 4, Exchange House, St Cross Ln, Newport, PO30 5BZ





NEWS FROM

**SANDOWN NORTH**

by Cllr Debbie Andre

The evenings are getting lighter and the days warmer and I'm sure that we're all looking forward to summer when the Island comes alive in all of its glory. Sandown hosted the "Sandown Sprint" last month at Culver Parade. I attended the event on both days and enjoyed seeing how well organised the event was and how it showcased Sandown to the wider public. I have received several comments from residents, mostly positive, but I know that communication before the event with residents, especially in respect of notification of road closures, was an issue which the organisers are keen to address for next year when the event is planned to take place once again. If you would like to send any further comments regarding the event to me, please do and I will pass them on.

Another event that is due to come to the Island is the final leg of the Tour of Britain cycle race. Taking place on Sunday September 11th, the route is due to go through Sandown, with a rolling road closure to minimise disruption to local residents. [tourofbritain.co.uk/stages/stage-eight/](http://tourofbritain.co.uk/stages/stage-eight/)

All Town Councils throughout England are required, by law, to hold an Annual Parish Meeting, which must take place between 1 March and 1 June every year. There is often confusion between the Annual Town Meeting and the Annual General Meeting of the Town Council. The purpose of the Annual Town Meeting is so that the Town

Council can explain what they have been doing over the last year. It also enables the electors to have their say on anything they consider is important to the people of the town. Other local organisations can also be invited to speak about their work. All Councillors representing the town will be invited to attend. Councillors will have the opportunity to raise questions and make comments if they wish. However, the purpose of the meeting is to enable Sandown electors to find out what is going on in their town and to have their say. It's yet to be confirmed at the time of writing, but currently it's proposed that the Annual Town Meeting is held prior to the Sandown Town Council AGM on Monday 9th May. A formal notice and agenda will be published on the Sandown Town Council website a minimum of 7 clear days in advance of the meeting.

[www.sandowntowncouncil.gov.uk](http://www.sandowntowncouncil.gov.uk)  
I now hold my Councillor surgeries on Saturday mornings from 11am to midday at Brown's. However, get in touch directly if you would like to arrange a meeting either face to face or virtually. Also, Cllr Heather Humby holds her weekly surgery every Thursday at 11am at Sandown Library and is also available on 402024 or [heatherhumby@sandowntowncouncil.gov.uk](mailto:heatherhumby@sandowntowncouncil.gov.uk)

☎ 07948 757977

✉ [debbieandre4sandown@gmail.com](mailto:debbieandre4sandown@gmail.com)

## New App Protects Female Islanders on Walk Home From Work

An app designed to help women feel safer while travelling home from work at night, is to be offered free to female hospitality workers.

After a successful bid to the Home Office, the Isle of Wight Council will work in partnership with Shaping Portsmouth and Portsmouth City Council to issue over 300 licenses for the StaySafe Lone Worker app to women working in the hospitality sector on the Island and in Portsmouth.

The app is available to businesses such as pubs, restaurants and shops. It is able to track their movements and connect them to a call centre while travelling home at night. The user will be able to log when they leave work and then again when they reach home, with their whereabouts picked up by a Milton Keynes based control centre to ensure they reach their destination.

If they feel unsafe along the way, the user can tap to be connected to a call handler to speak to while they travel, and if the situation escalates the handler can then contact the police and give them accurate co-ordinates. Councillor Ian



Stephens, Isle of Wight Council Cabinet lead for Community Protection, said:

"I would encourage Island hospitality business owners to sign up to this app, to provide that added precaution for their female workers on their journey to and from work.

"Keeping our Island a safe community is a priority for us and this app provides peace of mind and security for lone workers travelling home at night."

The free app offer is in place for the hospitality sector to use the available licenses until March 2023.

**If you would like to sign up your business to the StaySafe app offer, email [contactus@shapingportsmouth.co.uk](mailto:contactus@shapingportsmouth.co.uk).**

## Wootton Housing Given Go Ahead

By Louise Hill LDR

Permission for housing on the outskirts of Wootton has been granted.

The application for outline permission, submitted by Maritime and Provincial Ltd, was looking for 29 houses to be built behind houses on Station Road.

It had been met by fierce rejection from residents and Wootton Bridge Parish Council, which raised concerns over flooding, ecology and the greenfield nature of the site.

Cllr Barry Abraham, of the parish council, said the land was rich in species and its damp condition was crucial to the ecosystem and should not be given up to housing lightly.

Members of the committee shared residents' concerns Station Road was busy and dangerous and asked if, in

the future through a detailed application, provision for a cycle route along the road could be given.

Double yellow lines were also recommended along the stretch of Station Road, as the access point leads onto a blind bend.

Cllr Geoff Brodie said the issues with the application were balanced, weighing up highways and infrastructure concerns against the council's presumption in favour of sustainable development and affordable housing provision.

He said the application, should it come back with the 29 proposed houses, would provide ten affordable properties, putting a roof over the heads of ten Island families.

The plans were approved by seven votes to three, with one abstention.

## VENTNOR MOBILITY CENTRE



**10% OFF**  
ON PRODUCTION OF THIS ADVERT

### Regain your independence...

Agents for scooters, rise/recline chairs, stairlifts and all available mobility aids



**FREE HOME SURVEY! We also Buy & Sell - Can't come to us, we'll come to you!**

Unit 4, Old Station Road, Off Mitchell Avenue,  
Old Station / Tunnel, Ventnor PO38 1DX

**Tel: 01983 855545**

**PRE-BOOKED APPOINTMENTS ONLY TO AVOID DISAPPOINTMENT**



# Tour of Britain's Isle of Wight Route Revealed

By Oliver Dyer

The Isle of Wight's leg of this year's Tour of Britain will be "the toughest ending" to the event in modern history, organisers say.

Riders are being welcomed to the Island for the conclusion of the cycling event on September 11.

Stage eight will see riders start in Ryde before embarking on a 150-kilometre route to The Needles.

Not only will the route showcase the Island to a worldwide TV audience, fans will be able to catch the race in multiple locations owing to the way it loops around the Island.

Among the towns featuring will be Newport, as well as Cowes, Sandown, Shanklin, Totland, Ventnor and Yarmouth.

The final 20 kilometres will take the peloton along the stunning Military Road, which offers stunning panoramic views out across the English Channel, towards The Needles Landmark Attraction.

This year's race culminates with a two-kilometre climb up to Tennyson Down, the final 400 metres of which average a gradient of 9.6%, making it the toughest ending to any Tour of



Britain in modern history.

ITV4 will continue to broadcast live flag-to-flag coverage of every stage, as well as a nightly highlights show, allowing fans in the UK to watch wherever they are.

The race will also be shown in over 150 countries worldwide, in part thanks to the event's partnerships with Eurosport and the Global Cycling Network.

This year's Tour of Britain will comprise the following stages:

Stage one: 4/9/2022

Aberdeen to Glenshee Ski Centre

Stage two: 5/9/2022

Hawick to Duns

Stage three: 6/9/2022

Durham to Sunderland

Stage four: 7/9/2022

Redcar to Duncombe Park, Helmsley

Stage five: 8/9/2022

West Bridgford to Mansfield

Stage six: 9/9/2022

Tewkesbury to Gloucester

Stage seven: 10/9/2022

West Bay to Ferndown

Stage eight: 11/9/2022

Ryde to The Needles.

## Sweet Dreams Come True For New Shanklin Business Owner

By Dominic Kureen

A brand-new shop owner hopes to bring a sweet serving of nostalgia to Shanklin's town centre.

Candies, the brainchild of owner Matthew Larcome, is located next to Shanklin Library on Falcon Cross Road, opened has its doors for the first time.

The candyfloss pink sweet shop is stocked with more than 150 jars of childhood classics from the past five decades, and includes a large tuck shop.

As well as pick 'n' mix sweets, customers can stock up and treat the family to a selection of goodies including chocolate, toffees, soft drinks



and milkshakes.

The store soon hopes to add a selection of Isle of Wight produce including homemade cakes, ice cream and fudge, in addition to traditional seaside souvenirs.

The shop opens daily between 11am and 5.30pm, with updates to its stock range available on the Candies Isle of Wight Facebook page.



NEWS FROM

**RYDE MONKTONMEAD**

by Cllr Karen Lucioni



Wow May already! What great weather we had at Easter and a wonderful event on Eastern Gardens, lots of residents enjoyed it. I was contacted by a few worried about the amount of rubbish left. I have spoken to officers at Ryde Town Council to express my concern also and ask that other events have a plan to deal with it before they happen. I am also informed that toilets on the Eastern Gardens ran out of paper due to the sheer amount of people attending, if there is any issues which needs to be dealt with on a holiday, weekend or out of hours there is a sign on all doors with a phone number to let someone ASAP. We have now taken on the Ryde

Marina so if you are unable to call and they are open they may be able to help you. However please do feel free to let me know if there is an issue or even compliment that I need to take forward.

I continue to support all residents with their queries, and welcome residents reporting ward issues to me direct that I may not have seen. The Section 19 report on the flooding that occurred last year after exceptional rainfall is nearly finished for Ryde Monktonmead and the wider area of Ryde itself, once it has been finalised I will arrange a ward meeting to go through the findings and get the recommendations acted upon.



07506 930109 karen.iow@icloud.com



**FRONTROW**  
**GROUNDWORKS**  
**ISLANDWIDE**

**Fully insured**  
**28 yrs experience**  
**Reliable!**

## Fencing

**Removed - Repaired - Replaced**

**All types of fencing undertaken**

**Quality materials used • FREE quotes**



**Call Andy 07817 979501**  
**frgworks@icloud.com**

**PLUS Landscaping • Turfing • Driveways • Pathways • Decking**  
**• Drainage • Tree & Hedge maintenance & removals**  
**• Footings • Garden walls • Guttering**





NEWS FROM

## SHANKLIN SOUTH AND CENTRAL

by Cllr Chris Quirk &amp; Cllr Michael Beston

### ISLAND HOSPITALITY AND LEISURE BUSINESSES OMICRON GRANT FUNDING UPDATE:

The IW Council has completed its work to allocate the central government's Omicron Hospitality and Leisure Grant, plus the Additional Restrictions Grant payments. Over £4.3 million has been distributed by the Isle of Wight Council to support Island businesses in the hospitality and leisure industries, including the accommodation sector. The two grant schemes were announced at the end of 2021 with the scheme closing at the end of March 2022. Previous COVID business support grants were automatically issued, but these two grants were run in a different way which required more work and time both for the businesses applying and for the council distributing the funding. The Island's hospitality, leisure and accommodation industry is a critical part of our economy, so a grant aimed at them, right in the middle of the winter season, has been very helpful for many small businesses across the Island. In total, over 1650 businesses benefitted from the Omicron Hospitality and Leisure Grant or the Additional Restrictions Grant.

**SHANKLIN RAILWAY STATION CAR PARK:** Our thanks go to Phil Dominey, the Senior Regional Development Manager at South Western Railway for his swift intervention regarding the station car park surface repairs. A member of the public had reported to us a large pothole adjacent to the tactile paving ramp. Being that this area is off the highway network and not the responsibility of Island Roads, the repairs were swiftly carried out by the SWR maintenance team. Should you need to report, view, or discuss local problems such as graffiti, fly tipping, broken paving slabs, pot holes or street lighting, please use the 'FixMyStreet' website that goes directly to Island Roads: [www.fms.islandroads.com](http://www.fms.islandroads.com) or alternatively, contact us for any assistance.

**ANNUAL WASTE AND RECYCLING BOOKLET:** The annual waste and recycling booklet and collections calendar should be delivered through your door

soon if you have not already received them. This handy guide contains full details on waste collections for your area, including:

- Guides on what types of items should go in what waste bin/sack and introducing the new battery kerbside collection service.
- How to book free and paid for additional services, such as re-use collections and Collection Plus.
- Details on the Island's household waste recycling centres, and;
- Guidance for businesses and holiday let owners requiring commercial waste collections.

A new addition this year is the battery collection service. Amey waste services will now collect household batteries separately from your waste on your refuse week and take them for sorting and recycling – up to 90 per cent of a typical battery can be recycled. To make use of the service, place household batteries in a clear sandwich bag and place on top of your black bin. This service is only available for standard household batteries. Any households that do not receive a booklet by the start of May are advised to contact the IW Council's waste and recycling team by emailing: [waste.contract@iow.gov.uk](mailto:waste.contract@iow.gov.uk) or by calling (01983) 823777 to request a copy.



☎ 07802 705831  
✉ [chris.quirk@iow.gov.uk](mailto:chris.quirk@iow.gov.uk)  
☎ 07885 644426  
✉ [michael.beston@iow.gov.uk](mailto:michael.beston@iow.gov.uk)

## Plans to Turn Former Ventnor Restaurant to Flats

By Louise Hill LDR

A former Ventnor restaurant is set to be turned into flats overlooking the beach.

The current owners of the Waterside Restaurant on the Esplanade are proposing to change the ground floor into flats.

Formerly the Richmond Hotel, the building was converted into flats and a restaurant nearly 20 years ago and could now become completely residential.

Plans submitted by Stag Rock (Ventnor) Ltd, a company based in St Anne's in Lancashire, would see the Waterside turned into two two-bedroom flats.

Documents, submitted on behalf of the developers by Andrew White Planning Consultancy, say the conversion would remove the plastic signage on the front and, at a later date, another application would be submitted to restore the ground floor frontage so it complements the Victorian nature of the upper floors.



Most recently the building was known for the popular local hot spots, Ale and Oyster and Hello Sailor, but tenants have been unable to sustain a viable restaurant there, said to be due to the challenges of operating at the premises due to various deficiencies.

According to the planning agents, there is a lack of commercial bin storage, the toilets are in an awkward position and there is no commercial gas supply in the kitchen.

**To view the plans, 22/00558/30PA, you can view the Isle of Wight Council's planning register. Comments can be submitted until May 4.**

## Elite Garages Opens in Newport

Elite Garages has been a family-run business for over 60 years, with three generations of the family working together, and Newport is their 16th vehicle repair centre. Richard Whittemore (Managing Director) said, "We pride ourselves in being a local garage who deliver the personal touch you would expect from a family business. The whole team has worked so hard to get our Newport site ready for opening. Our Isle of Wight customers can expect competitive prices and a friendly, trustworthy service from our highly experienced team."

The Elite Garages Newport branch will be

overseen by Area Manager Mark Stevens, who already manages branches in Portsmouth, Brighton and Pulborough. Mark said, "We're excited to be opening on the Isle of Wight. The great location in Newport means it's easy to leave your vehicle with us, or you can enjoy our free customer WiFi whilst waiting for your vehicle. We have brand new, state-of-the-art equipment in our workshop and a spacious, modern waiting room for our customers."

Elite Garages Newport offers a vast range of services including MOTs, tyres, servicing, brakes, clutches, exhausts, batteries,

## Coastal Mobility

THE ISLANDS PREMIER MOBILITY SPECIALISTS

ALSO: WHEELCHAIRS • BATH LIFTS • WALKERS • ADJUSTABLE BEDS &amp; CHAIRS • ACCESSORIES



**SHANKLIN** Tel: 866431  
56 REGENT STREET  
**NEWPORT** Tel: 533500  
9 ST THOMAS SQUARE



**FREE ISLAND WIDE DELIVERY!**  
Great deals on mobility scooters  
and lift and recline chairs





# Exhibition of Island Carnival Memories Opens

On Monday 4th April a new exhibition was officially opened at Ryde Library, titled 'Island Carnival Memories – A Rather Bewildering Spectacle'.

A Rather Bewildering Spectacle is how the County Press described the very first Carnival in Ryde in 1887 in honour of Queen Victoria's Jubilee. This exhibition showcases the work of the New Carnival Company and partners over the past two years on their project of the same name. The Isle of Wight has one of the most prolific and historical carnival traditions in this country and the aim of this exhibition is to celebrate that fact!

The exhibition features a collection of reminiscences, stories and photographs contributed by Isle of Wight carnival people in a fascinating Oral History project funded by the National Lottery Heritage Fund. The project aims were to share and celebrate the Island's rich carnival heritage. Working with Lisa Kerley from InspireEd, and Carisbrooke Castle Museum, Island residents were interviewed and their memories and experiences of Island Carnivals over the past 80 years were collected.

These interviews have now been collected on a website for future generations as a legacy of these experiences. See: [www.iwcarnivalmemories.co.uk](http://www.iwcarnivalmemories.co.uk)

An intergenerational approach saw the 'HAF: Holiday Activity and Food' programme for children taking inspiration from the past carnivals. It was delivered by The New Carnival Company, Theatre Educational and Aspire, all based in Ryde. Children learnt about the history of Ryde Carnival and created their own versions of some of the most iconic memories including The Keystone Kops, King Kong, The Ryde Buccaneers, The Flintstones, Carnival Queens and lots more. This culminated in a performance in Ryde town centre during Ryde Carnival Week.

The opening of the exhibition was also a party to celebrate 10 years of The New Carnival Company. It was here that Chris Slann (Executive Director) and Frankie Goldspink (Creative Director) of the NCC, announced that after 20 years working with Island Carnivals, and 10 years at the NCC, they will now be working



in a freelance capacity. This will allow them to focus on their other interests – including their new venture 'Chris and Frankie – Creative Ways Outdoors' and their new roles at the Isle of Wight Ramblers Association.

Jo Treagus Chair of the New Carnival Company said: "I am sure we all want to thank Chris and Frankie for all the colour, sparkle and joy they have brought to the Isle of Wight over the years!"

The new team have many years of carnival and outdoor arts events experience between them. They are looking forward to continuing the amazing

legacy of The New Carnival Company. Over the next few years, the team will build on their three flagship events – Isle of Wight Mardi Gras, Crossing the Bar and Merry and Bright, making them bigger and better than ever before.

The exhibition is open until the end of May. Ryde Library is open Monday 9am-5.30pm, Tuesday 9am-5.30pm, Wednesday 10.30am-7pm, Thursday Closed, Friday 9am-5.30pm, Saturday 9am-5pm, Sunday Closed

For more information, please contact [gemma@thenewcarnivalcompany.com](mailto:gemma@thenewcarnivalcompany.com)



diagnostics, air con, wheel alignment and other mechanical repairs.

With thousands of tyres in stock within the Elite Garages group, they have tyres for everything from a wheelbarrow to a Ferrari, at extremely competitive prices.

To celebrate their opening,

Elite Garages have various opening offers, including a FREE MOT with a Premium Service and 15% off brakes or clutches.

You can book your vehicle in to Elite Garages Newport by calling 01983 478161 or visiting their website [www.elitegarages.co.uk](http://www.elitegarages.co.uk).



Domestic and Commercial Heating Oil, Agricultural and Marine Diesel supplied from our Newport fuel depot.

On the Island, for the Island.

Call 01983 654321 to speak with our dedicated team to order your Fuel or Heating Oil.

[Solentfuels.co.uk](http://Solentfuels.co.uk)



Scan here to go directly to our website







# Shanklin Town Council

Town Clerk RFO: Ms S. Janeway LL.B (Hons) CILCA MSLCC, 65 Landguard Road Shanklin Isle of Wight PO37 7JX

☎ 01983 865101 ✉ shanklintowncouncil@hotmail.com 🌐 www.shanklintowncouncil.co.uk



## Town Mayor's address

*Councillor Chris Quirk, Shanklin Town Mayor*

The month of May will see many Shanklin residents

and local community organisations preparing for Platinum Jubilee celebrations for Queen Elizabeth II over the extra Bank Holiday weekend from taking place between Thursday 2nd June and Sunday 5th June. The Town Council, working with community groups including local churches, Shanklin Rotary, Shanklin Brass Band and Shanklin Performing Arts Centre, are organising several events over the holiday period; there will be no entry charges for these events and the outline programme is as follows:

**Friday 3rd June** – Events on the

beach and Pier Apron including live music, dance shows, a hog roast, hula and limbo competitions and a fun afternoon.

**Saturday 4th June** – Shanklin Rotary will be holding a charity table top sale at Falcon Cross Hall with buskers playing outside to entertain you.

**Sunday 5th June** – This is the National Big Lunch/Big Picnic as a National Celebration to Celebrate the Platinum Jubilee. We will have live entertainment all day including Company B, Jake and Tilly and Shanklin Brass Band. There will be the usual Tea Tent and we hope to add a Strawberries and Cream stall and a Pimm's Tent (subject to

licensing approval).

Some of the dancers from Dance VibeZ, based at Shanklin Performing Arts Centre are performing for us on Friday, but then go off to London to perform for the Queen, a great honour for some of our local youngsters!

Of course, some local residents are organising their own street parties. If you are considering organising a party in a public place it might help you to understand whether you need any formal approvals by contacting Jackie Ellis, Commercial Activities and Beaches Officer at Isle of Wight Council (e-mail: Jacqueline.Ellis@iow.gov.uk).

You can contact Chris Quirk, the Mayor of Shanklin by e-mail; - chris.quirk@iow.gov.uk or by phone on 07802 705831.

The Island's  
**CARPET & FLOORING  
SUPERSTORE**



**OPEN 7 DAYS A WEEK**

MON - FRI 9AM - 6PM

SAT 9AM - 5PM

SUN 10AM - 4PM

**01983 533150**

12 Hurstake Rd, Riverway Industrial Estate,  
Newport, Isle of Wight, PO30 5UU

# NO DEPOSIT INTEREST FREE CREDIT

**Subject to status on orders over £495**  
Excludes fitting charges

Credit subject to status and affordability. Terms & Conditions Apply. D&S Carpets is a credit broker and is Authorised and Regulated by the Financial Conduct Authority.

Credit is provided by Novuna Personal Finance, a trading style of Mitsubishi HC Capital UK PLC, authorised and regulated by the Financial Conduct Authority. Financial Services Register no. 704348. The register can be accessed through <http://www.fca.org.uk>

[www.dscarpets.co.uk](http://www.dscarpets.co.uk)

Rugs

Luxury  
Vinyl Tiles

Wood & Natural  
Flooring

Vinyls

Carpets



## Ryde Children's Carnival Day

Taking place in different locations around Ryde town centre this free event will include:

- Ryde Carnival royalty float
- Children's costume competition
- Children's parade through the town
- Storytime with Ryde Library
- Dance performance by Ella Sheppard School of Dance
- Picnic lunch with the animals from Shademakers UK
- Magic and fun with Huxley

And more...

Supported by Ryde Town Council.

Visit [www.rydecarnival.com](http://www.rydecarnival.com) for more information and details on Children's Carnival Day, Main Carnival and the Illuminated Carnival

*Ryde Carnival*



**SATURDAY  
27<sup>TH</sup> AUGUST  
11AM - 3PM**



## Ryde Beach Lifeguard Station

Planning has been submitted to the Isle of Wight Council for much needed renovations on the lifeguard station. This will enable Ryde Beach Lifeguards to continue providing an outstanding service keeping everyone safe on the beach.



## Rydabus 2022

Rydabus 2022 is taking place on May 14th & 15th 2022.

Rydabus involves local attractions and events to provide a timetable of FREE vintage bus services.

Programmes are produced and sold to help you plan your travel.

To buy a programme or find out more information please visit [www.rydabus.co.uk](http://www.rydabus.co.uk)



## Celebrating Ryde and Annual Town Meeting 2022

What's going on in Ryde? Come and find out!

Come along to the Annual Town Meeting to celebrate Ryde's achievements, find out future plans and share your views.

Saturday 14 May, 10am-4pm at Garfield Methodist Church, Garfield Road, Ryde. Everyone is welcome.

*\*Annual Town Meeting is facilitated by Ryde Town Council in partnership with the Isle of Wight Council.*



## Queen's Platinum Jubilee

Come join us on Thursday 2 June at 21:45 at Ryde Marina for the Queen's

Platinum Jubilee Beacon lighting. Ryde Town Council will pay tribute to the

Queen by lighting a Beacon as part of the official Platinum Jubilee Weekend of celebrations. See our social media and website for more details on Jubilee celebrations round the town. Please note the Beacon will be lit at 21:45.

### Upcoming Council Meetings

Date	Meeting	Time	Venue
Tuesday 3 May	Finance	7pm	
Monday 9 May	Full Council	7pm	Please see the agenda on our website three working days before the meeting for venue details
Tuesday 17 May	Planning	7pm	

## Monthly buggy walks at Puckpool Park, Ryde

Join local families, breathe in the fresh air, exercise and enjoy a trip to the park. Starting Friday 6 May.

First Friday of the month except bank holidays.

Puckpool Park, Ryde  
10am-12pm

For questions, please call Vectis on 01983 525985 or email [toby.eaglan@sovereign.org.uk](mailto:toby.eaglan@sovereign.org.uk)







## You could be a family in 2022

### Adoption is easier than you think

- Single or a couple • LGBT+ • Already a family • Disabled
- Receiving benefits • Renting or own your home

### Welcome to Adopt South

Right now, we have toddlers, siblings and children with disabilities who need a family of their own to be loved and cherished.



Talk to our friendly team about starting your adoption journey today.

0300 3000 011 • [adoptsouth.org.uk](https://adoptsouth.org.uk)



The Regional Adoption Agency for Hampshire, Isle of Wight, Portsmouth and Southampton Local Authorities



**Hampshire**  
County Council



**Portsmouth**  
CITY COUNCIL



**SOUTHAMPTON**  
CITY COUNCIL



**Cherry Tree**  
shutters  
*Changing your view*

**20%  
SALE  
NOW  
ON!**

**01983 640174**

[www.cherrytreeshutters.co.uk](https://www.cherrytreeshutters.co.uk)

*Providing interior plantation shutters to cover any window style or colour including; Square, Rectangle, Circular, Arched, Bays and Patio Doors.*



\*Terms & Conditions Apply

**Checkatrade.com**

**0%  
FINANCE  
AVAILABLE**





**Direct Cremation Specialists based here on the Isle of Wight for the Isle of Wight**  
 The Island's only Independent Funeral Directors who are dedicated to this style of service  
**Affordable Direct Cremations. Separate the Cremation from the Celebration.**

We pride ourselves by offering great value for money without any compromise  
 on the care given to you and your loved ones.

We are proud to be the longest service Island Independent Family Funeral Directors.



**Direct  
cremations  
from £1,495  
Funeral Plans  
from £1,750**

**Call 01983 632598** [info@isleofwightdirectcremation.co.uk](mailto:info@isleofwightdirectcremation.co.uk)  
**[www.isleofwightdirectcremation.co.uk](http://www.isleofwightdirectcremation.co.uk)**

#### What is direct cremation?

Quite simply, it is an alternative to a traditional funeral. The cremation takes place unattended, giving you the freedom to celebrate your loved one at a time, place and venue of your choice.

#### How much does a direct cremation cost?

We have 2 options to choose from:-

1. Our 'Island Way' is £1,695.00 - this is for the direct cremation at the Isle of Wight Crematorium
2. Our 'Wessex Way' is £1,495.00 this is for a direct cremation at a mainland crematorium

We offer this option for families who would like to take advantage of savings that mainland crematoriums offer.

#### Can I get help with the costs?

Yes, if you are in receipt of benefits you may be entitled to a payment of up to £1,000 from the Department of Work and Pensions, so we advise contacting them to enquire.

#### What is the difference between Isle of Wight Cremation and a mainland provider?

We are based here on the Island, we can take your loved one into our care promptly and without the distressing delay of travelling over on the ferries.

We can meet you face to face at our Island offices. Or make all arrangements over the telephone.

Whereas mainland providers often courier the ashes back, we provide a more personal service by hand delivering them to you at your home, or you can come in and collect them at either of our offices. We are locals and understand our local community.

#### Do you offer prepaid direct cremation funeral plans?

Yes, we do and we use Golden Charter, the UK's market leader for providing prepaid funeral plans to Independent Funeral Directors. Your funds are safe and placed into the Golden Charter Trust. Recently we were awarded by Golden Charter as the best funeral planner for 2020 in the Southern England Region.





**Outdoor Hard Surface Cleaning & Refurbishment**



Soda specializes in outdoor cleaning such as car parks, driveways, patios/pathways, decking and walls. **We do not use chemicals, just ordinary water with high pressure rotary surface cleaners.**

**Tel: 01983 840417**

**Email: [iansummers6048@gmail.co.uk](mailto:iansummers6048@gmail.co.uk)**

**[www.sodacleaning.com](http://www.sodacleaning.com)**

Her Whey

WASTE NOT

## ZERO WASTE STORE

Come into Her Whey to refill all of your household goods and browse our great range of eco friendly products.

Open 10am-4pm: Tuesday to Saturday

10am-6pm: Thursdays

- IOW made products
- Beauty and toiletries
- Flours and Dried fruit
- Tea, coffee and sugar
- Snacks and Chocolates
- Cleaning Products
- Pasta, rice and grains
- Oils and Vinegars
- Eco household products
- Vegan Friendly products

Bring your own tub or use one of our free recycled pots!



15 Cross Street, Ryde, IOW. @herwheystore  

*"We don't just sell hearing aids,  
we provide total hearing care"*

## Wight *Sound* Hearing

Registered Healthcare Professional  
Colin Stockdale RHAD MSHAA AIHHP (Executive Member)

12 High Street, Shanklin PO37 6LB  
Tel 01983 86 59 59

All Hearing Tests and Consultations are FREE

Latest Digital Testing & Fitting Equipment

Video Otoscope (see inside your own ear)

Try Before You Buy OR RENT a Digital  
Hearing Aid (from £1 A DAY)

**Free  
Home Visits**

**EVERY Brand of Hearing Aid  
Available in the UK**

**Easy Payment Plans**

**THE HUNT IS OVER**

## lesliesmotors

### Used Car Sale Has Started!

## Save up to £2000 on a used car

Low rate finance

We will beat We Buy Any Car  
on your part exchange value!

**[lesliesmotors.co.uk](http://lesliesmotors.co.uk)**







| LEGAL & FINANCIAL |

# Accident At Work: Employed Or Self-Employed

**When it comes to making a claim for compensation following an accident at work resulting in injuries, it is important to know what your rights are.**

**W**hilst it is easier to make a claim if you are employed, it does not follow that just because you are someone who is self-employed, you cannot make a claim.

A business owner/manager still owes duties to a self-employed contractor working for them.

There is an obligation for example not to place someone whether employed or self-employed, in danger and to ensure their safety is considered whilst they are at work.

The way in which someone's loss of earnings is calculated is also different.

If a person is employed, it is very simple to provide evidence of loss of earnings by way of salary slips.

However when someone is self-employed, then it is a matter of providing

evidence of loss of profits. In such circumstances, the evidence of loss is usually by way of providing three years pre-accident profit and loss accounts which would show average profits based on which loss of profits since the date of the accident can be calculated.

If employed, sometimes an employee could continue to receive their salary under the terms of their contract of employment (if the contract provides for this).

However if self-employed, then clearly should someone be unable to continue to work, they will not receive payment.

The only option available to them would therefore be to claim benefits, which are unlikely to be at the same level as an individual's earnings.

In those circumstances, it is possible to ask for an interim payment on account of the claim, so as to allow an injured person to continue to meet their financial liabilities such as mortgage payments or bills.

If you have been involved in a serious accident at a place of work, please do feel free to speak to Parisa Costigan, senior solicitor, for an informal chat to find out what you may be entitled to claim including for example an interim payments (payment on account of the claim), from the business owner (Defendant), if you are unfortunate enough to have to take time off work as a result of any injuries sustained, given one's responsibilities to pay bills and a mortgage do not stop even if someone stops working.



**£10.00**  
**OFF YOUR NEXT MOT**



**WESTRIDGE GARAGE**

**01983 562717 / 562160**

**westridgegarage.co.uk**

**Brading Road, Ryde, Isle of Wight, PO33 1AY**

This voucher cannot be used in conjunction with any other reduced price MOT offer. (rrp £54.85). Exp 31st May 2022

## Alzheimer Café IOW

Tel: 01983 220200

Email: [info@alzheimercafeiow.org.uk](mailto:info@alzheimercafeiow.org.uk)

Website: [www.alzheimercafeiow.org.uk](http://www.alzheimercafeiow.org.uk)



### East Cowes Alzheimer Café

East Cowes Town Hall  
York Ave, East Cowes PO32 6RU  
First Tuesday of the month  
2pm—4pm

### Ryde Alzheimer Café

All Saints' Church Hall  
Queen's Road, Ryde PO33 3AF  
First Friday of the month  
11am—1pm

### Cowes Alzheimer Café

Football Club, Reynolds Close  
off Park Road, Cowes PO31 7NT  
Second Wednesday of the month  
2pm—4pm

### Totland Alzheimer Café

St Saviours Holy Family Centre  
Weston Lane, Totland PO39 0HE  
Third Wednesday of the month  
2pm—4pm

### Ventnor Alzheimer Café

The Green Room, Salisbury Gardens,  
Dudley Rd, Ventnor PO38 1EJ  
Third Wednesday of the month  
6pm—8pm

### Sandown Alzheimer Café

The Broadway Centre  
1 Broadway, Sandown PO36 9GG  
Fourth Wednesday of the month  
2pm—4pm

### Newport Alzheimer Café

Newport Methodist Church  
Quay Street, Newport PO30 5BA  
Last Wednesday of the month  
6pm—8pm

### ACE7 Alzheimer Café

for people with early onset dementia aged 45—65 years  
Riverside Centre  
Newport PO30 2QR  
2nd and 4th Tuesdays of the month  
10.30am—12.00 o'clock

**Newcomers very welcome**

**Booking only necessary when Covid-19 restrictions apply**

An Alzheimer Café is a meeting place providing informal education about dementia, guidance and signposting to other services. We welcome people with dementia, their families, carers, professionals and anyone with an interest in dementia.



# WOULD YOU SAY SHE WAS ASKING FOR IT?

**STEP UP. SPEAK UP.  
END SEXUAL VIOLENCE.**

**SEXUAL VIOLENCE STARTS SOONER THAN YOU THINK.  
BY THINKING ABOUT OUR OWN ACTIONS AND CHALLENGING  
ATTITUDES WE CAN MAKE OUR COMMUNITY SAFER FOR EVERYONE.**

[saferportsmouth.org.uk/stepup](http://saferportsmouth.org.uk/stepup)



[iow.gov.uk/communitysafety](http://iow.gov.uk/communitysafety)





# Incredible EDIBLES



Some plants have got the lot – they look good and do you good. Flo Whitaker recommends planting some handsome vegetables in your flower borders.



The yields will be smaller this way, but it's always fun to grow a few edibles.

Carrots have elegant, border-worthy foliage. The small ball-type varieties don't require much depth of soil and can also be grown in a container; likewise radishes, which are very quick to crop. Incidentally, radish flowers are beautiful – a few roots left unharvested will produce delicate flowers in gentle mauve and cream shades.

Wigwam supports are quick and easy to make.

Use bamboo canes or hazel poles firmly bound at the top with string. Each support needs to be spaced approximately 20 cms from its neighbour and pushed 15cms into the soil (keep that in mind when considering the eventual height

of the plants you want to support!). A tall wigwam of French or runner beans makes a bold statement in a border. The annual climber, *Ipomoea lobata*, ('Spanish Flag') can be combined with runner beans. Vigorous by nature, it will



**H**ere are reasons why a traditional vegetable garden looks the way it does. Centuries of trial and error has come up with a system that's hard to beat. Crops grown in neat rows take up less space and are easier to water and harvest, but if there's no room in your garden for a designated veg plot you can still grow some vegetables. Many have great ornamental qualities and can be mingled through the flower borders to good effect.



easily keep up with the rapid growth of the bean plants and bears unusual blooms in graduating shades of red/orange/yellow. Mangetout peas have dainty flowers, are easy to grow and will quickly scramble up a support. Some varieties have snazzy pink or purple pods. Courgettes and squash can be trained up a wigwam or over a trellis arch. Some gardeners actually prefer this method, reckoning the additional airflow makes for less mildew/rot problems. Make sure your supports are sturdy as these plants will become heavy as they start to crop.

Cut-and-come-again lettuce is surely the easiest vegetable of all. It's best grown in a patio pot where the leaves will remain cleaner. Beetroot seedlings are my latest salad-obsession. You'll require a seed tray filled with general purpose compost, sharp scissors and a heart of stone, for once you've snipped and harvested the cress-like leaves, the seedlings die – but they are so delicious, with the distinctive taste and colour of mature beetroot. They look fabulous scattered over a green salad. Lettuces and violas aren't an obvious combination, but make surprisingly companionable bedfellows. Violas enjoy the shade cast by the developing lettuces and if you grow dark-leaved lettuce, really interesting colour combinations may occur. Viola flowers are edible and make a pretty garnish for summer cordials – or a G&T! ☺

*“Lettuces and violas make surprisingly companionable bedfellows”*





**STUDIOPHASE**   

The Isle of Wight's local TV experts  
Call 404406 [studiophase.com](http://studiophase.com)

Why choose us?

- CAI approved • Friendly, reliable engineers
- We have over 30 years of local knowledge



**A&E BUILDERS**  
BUILDING & CONSTRUCTION SERVICES  
*No job too big or small!*  
EMAIL: [aebuilders71@gmail.com](mailto:aebuilders71@gmail.com)

- DRIVEWAYS • PATIOS • EXTENSIONS
- SPECIALIST BRICKWORK
- ORANGERIES • PORCHES
- DRAINAGE & HOUSEHOLD MAINTENANCE

Call for a no obligation free quote from a builder with over 30 years experience. Public liability insured.

**TEL. 07525700980/01983 883787**

**Beacon** MAGAZINE

**CONTACT US**

CALL US 01983 433112

FACEBOOK [iwbeacon](https://www.facebook.com/iwbeacon)

VISIT US [iwbeacon.com](http://iwbeacon.com)

INSTAGRAM [@beaconiw](https://www.instagram.com/beaconiw)

TWITTER [@iwbeaconmag](https://twitter.com/iwbeaconmag)

EMAIL [sales@iwbeacon.com](mailto:sales@iwbeacon.com)

**BONCHURCH GARAGE**

TEL: 854145 FAX: 854145

**MOT's, Servicing and Repairs**  
Air conditioning recharge and servicing • Modern diagnostics undertaken

TEL 01983 854145 EMAIL [bonchurchgarage@aol.com](mailto:bonchurchgarage@aol.com)  
Bonchurch Garage, Bonchurch Village Road,  
Bonchurch, Ventnor PO38 1RG

**Beacon** MAGAZINE

The latest news, celebrity interviews, recipes, homes & gardens, competitions and so much more!

**Sign up to the Beacon newsletter**

Receive bonus content direct to your inbox every week

[www.iwbeacon.com](http://www.iwbeacon.com)



**Island Repointing**

Natural Stone & Brick  
Masonry Waterproofing & Brick Replacement  
Damp Proof Course Installation & Cavity Clearance  
Vacuum Grinding  
Islandwide Coverage

Tel: 01983 531461 or 07715 397896



Advertise with us from as little as £38 per month.

**Call 01983 433112**



**Island Clock & Watch Repairs**

Over 50 years in the trade

- Old Watches and scrap gold purchased for cash (*within one hour*)
- Graduate of the British Horological Institute (1970)
- Restorations to Antique & Modern Clocks and Watches

Free collection & delivery, all over the island.

**Tel: 07867527157**

**10% OFF WITH THIS ADVERT**



**WHITE WINDOWS**

THE ISLAND'S PREMIER DOUBLE GLAZING COMPANY

**ENERGY BILLS INCREASING?**



Our double and triple glazed eco-tech systems delivers a step-change in the use of recycled material and content in a new generation of sustainable and energy efficient PVC-U windows and doors.

With an A+ rating for material type from the Building Research Establishment in its Green Guide, it makes the eco-tech systems among the UK's most sustainable window and door system options.

- W replacing old windows, doors and even conservatories can reduce heat loss
- W along with your roof and walls, old doors and windows can allow heat to escape
- W taking advantage of newer technology can transform your home
- W act now and help keep the warmth in

**WE CAN HELP CALL TODAY**  
**01983 523552**

[whitewindows.co.uk](http://whitewindows.co.uk) - [info@whitewindows.co.uk](mailto:info@whitewindows.co.uk)



# WIN! Can you spot the differences?



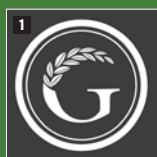
**STUBBINGS BROS**  
meeting your machinery needs

STUBBINGS BROS LTD - CHALE GREEN - VENTNOR ISLE OF WIGHT - PO38 2JN UK

www.stubbings-bros.co.uk E: contact@stubbings-bros.co.uk



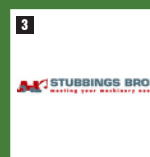
## THIS MONTH'S PRIZES... TERMS & CONDITIONS APPLY



**£25 Voucher**  
Courtesy of Grace's Bakery  
178 High St, Ryde  
PO33 2HW  
01983 717878  
www.gracesbakery.uk



**£10 Off**  
any hair treatment at Ana  
Hair Salon  
24 High St., Sandown,  
PO36 8DE  
01983 402694



**£25 Voucher**  
Stubbings Brothers  
Chale Green, Ventnor  
PO38 2JN  
01983 551443

NAME:

TEL:

ADDRESS:

**PRIZE PREFERENCE  
(CHOOSE ONE ONLY):**

1 ☐ 2 ☐ 3 ☐

POSTCODE:

E-MAIL:

- ☐ I am happy to be contacted by the sponsors for marketing purposes  
☐ I would like to receive Beacon Magazine's weekly email newsletter with more competitions

### Closing date - 31<sup>ST</sup> MAY 2022

Send your entries to: **IW Beacon Competition, 8-10 Dodnor Park, Newport, Isle of Wight, PO30 5XE**  
When sending your entry to us you **MUST** ensure that you use the correct postage. Terms and conditions available on request.  
Prizes must be claimed within 30 days of the draw date. Previous winners can be found on our Facebook and Twitter pages.  
Winners will be contacted by phone.

### Did you know...

You can take a photo on your phone and email your entry to **win@iwbeacon.com**.





SEAT MÓ



# The new SEAT MÓ 125

Seamlessly blends agile performance, dynamic looks, and low running costs. 100% electric.

## Coming soon.

**Register your interest.** Call us today or scan the QR code opposite.

**Snows SEAT Isle Of Wight**

Forest Road, Newport, Isle of Wight, PO30 5QJ

Tel: 01983 535727 [www.snows.co.uk/SEAT](http://www.snows.co.uk/SEAT)

