

CENTRAL AND
WEST WIGHT

Beacon

October 2021

HISTORY

ST WILFRID'S CHURCH
CELEBRATES 150TH
ANNIVERSARY

RECIPES

PUMPKIN
GRANOLA
BARS

BEEF &
PUMPKIN
STEW

WALK

CROSSING
THE BAR



Ultrafast Speeds
at Unbeatable
Prices



Where else on the Island can you
get 100mbps Upload AND
Download for only £22.95 or
300mbps Upload AND Download
for only £27.95 on a Fuss-free
30 Day monthly rolling contract?



Annual price increases in April each year apply. Reconnection fee applies if leaving and re-joining within 12 months. Simple as that. See [WightFibre.com/FussFree](https://wightfibre.com/FussFree) for details.

A Different Kind of Broadband Full-fibre • Ultrafast • Future-proof

wightfibre
because we care

Order online at wightfibre.com
or call 01983 240240



Isle of Wight
Pubs

What we offer...

-  New Menus
-  Open Fires
-  Sunday Roasts
-  Dog Friendly
-  Real Ales
-  Large Gardens
-  Fantastic Views

Please see website for
opening times

Sunday Roasts by the Fireside

As Autumn draws in nothing feels better than a hearty roast in a cosy Character Inn! Plus until the end of November we're offering **10% off food** at five of our landmark pubs!



10% OFF FOOD!

Monday to Friday
with this voucher*



THE
BUGLE INN
— YARMOUTH —

Tel: 01983 760272



THE
BUDDLE INN
PUB · DINING · SMUGGLERS

Tel: 01983 730243



THE
CRAB &
LOBSTER
— BEMBRIDGE —

Tel: 01983 872244



THE
SUN INN
— HULVERSTONE —

Tel: 01983 741124



THE
CAULKHEADS
— SANDOWN —

Tel: 01983 405080

use at...



Welcome from the EDITOR

Summer may be over, but awesome autumn is drawing in, bringing us nights under a blanket by the telly, roaring fires, cosy pub trips, crisp Isle of Wight walks and roast dinners!

October is the month of the Isle of Wight Walking Festival, with 100 great walks on your doorstep, just waiting to be discovered, including some brilliant family walks. I love the sound of the Unicorn Treasure Hunt at the Island Riding Centre, or the forest ramble with Rob Da Bank. There's more details on our website.

We're also bringing you details of a great new coastal walk, Crossing the Bar. A new project created by the New Carnival Company.

In this edition of Beacon, you'll find some great recipes to help use up the insides of those Halloween pumpkins, advice on planting winter bulbs to brighten up your home, competitions, days out, local news, history and much more.

Amy Shephard

Editor amy.shephard@iwbeacon.com



13

18

- 5 Win a Holiday to Barbados
- 6 Recipe: Pumpkin Seed Granola Bars
- 7 Recipe: Hearty Beef & Pumpkin Stew
- 9 Coastal Walks: Crossing the Bar
- 10-11 The Entertainment Guide
- 13 History: St Wilfrid's Church Turns 150
- 15 John Hannam Meets Neil Sedaka
- 18-19 Island Talent
- 20-23 News from your area
- 29-31 Gardens: Brilliant Bulbs
- 35 Spot the Spooky Difference Competition



29

Beacon

MAGAZINE

IW Beacon Media Centre, 8-10 Dodnor Park, Newport, PO30 5XE

CALL US
01983 433112

FACEBOOK
iwbeacon

TWITTER
@iwbeaconmag

VISIT US
iwbeacon.com

INSTAGRAM
@beaconiow

EMAIL
hello@iwbeacon.com

totalsensemedia



Sandham Gardens

Sandown Bay

Please find our prices online at
Sandhamgardens.com

OVER 55,
BRAND NEW
EXTRA CARE
SHARED
OWNERSHIP
APARTMENTS

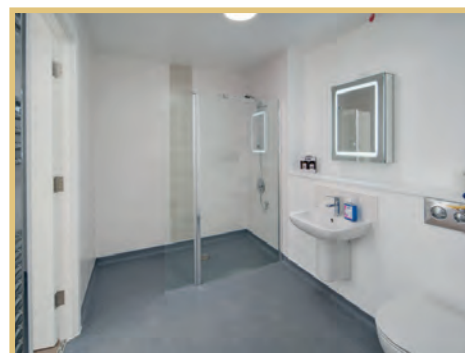


SHOW APARTMENT NOW AVAILABLE TO VIEW

All residents can be supported by the Wellbeing Team who are there to help everyone feel settled, supported and safe; this unique Wellbeing service can respond to your needs 24hrs a day on an unplanned care basis, enabling you to live independently in your own home.

To feel part of a community, there is access to activities every day such as:

- **Minibus outings**
- **Scheme shop**
- **Hairdressers**
- **Activities & Lunch Club**
- **Reception desk 7 days a week**
- **Communal lounge**
- **Laundry room**
- **Fitness room**
- **Dining room**



All apartments are built and equipped with emergency pull cord which connects you to 24 hours a day staff on site who can respond in a serious emergency for your peace of mind.

WIN WITH ISLE OF WIGHT RADIO



ISLE OF WIGHT RADIO, BRING ME TO *Barbados*

Imagine relaxing in complete luxury on the stunning Caribbean island of Barbados.



Now the travel industry is starting to open back up we've got a treat in store for you. Isle of Wight Radio has teamed up with Barbados Tourism Inc. to bring one lucky winner and their guest for a week-long luxury holiday on the beautiful Caribbean Island of Barbados.

Flying with British Airways, the winner and their guest will check in to Saint Philip's breathtaking Crane Resort. Isle of Wight Radio will look after you every step of the way, making sure you enjoy a truly memorable luxury holiday. Whether your ideal holiday is one filled with swimming, sunbathing, culture, cuisine or entertainment, Barbados has it all.

Understandably you're a little nervous about travelling at the moment, so Paul and Jamie are heading over to Barbados to check

out all the amazing facilities, and report back on all the measures being put into place to ensure your safety. Barbados has had very low rates of COVID on the Island and on the UK's Green List, but don't worry if you're not happy hopping on a plane just yet, you have a full 12 months to redeem this holiday of a lifetime.

A Barbadian legend since 1887, and the oldest operating hotel in the Caribbean, the historic Crane Resort has surveyed the famous pink sands and turquoise waters of Crane Beach from its dramatic cliff-top perch for over a century. From grand colonial styles suited featuring lavish gardens, private pools and rooftop terraces, to an impressive array of world-class amenities and services including fitness facilities, spectacular cascading pools, exciting restaurants including the Zagrat rated Zen, The Crane offers an idyllic respite on the South Coast of Barbados.

All you need to remember is
one phrase...

"BRING ME TO BARBADOS!"

If Paul, Hayley and Jamie call you after 8am on Friday 8th of October YOU could be jetting off to Barbados! BUT you MUST answer the phone with the phrase "Bring me to Barbados"! If you answer with 'Hello' or anything other than "Bring me to Barbados" you will have lost your chance to win and Isle of Wight Radio will have to call someone else.

Register at iwradio.co.uk and make sure you have your phone on you at 8am on Friday 8th of October!

Terms and conditions apply.

In association with Barbados Tourism Inc.

BARBADOS





MAKES
8-10
BARS

PUMPKIN SEED & SUPERFOOD Granola Bars

This recipe by Adele Trathan makes an ideal grab-and-go granola bar for those times when you are rushing out the door and you need a healthy snack. They are packed with protein, fibre, and a heart-healthy mixture of pumpkin and sunflower seeds

INGREDIENTS

125g (4.5oz) roasted
unsalted almonds
65g (2.25oz) pumpkin
seeds
65g (2.25oz) sunflower
seeds
35g (1oz) unsweetened
coconut flakes
¼ tsp salt
1 tsp cinnamon
1 tsp vanilla extract
3 tbsp clear runny honey
1 tbsp melted coconut oil

METHOD

1 Chop the whole almonds into smaller pieces and mix in a medium-sized bowl with the pumpkin and sunflower seeds, coconut flakes, salt and cinnamon and give it a good stir.

2 Then add in the wet ingredients, vanilla extract, honey and melted coconut oil. Gently stir the mixture until the nuts and seeds are fully coated with the wet ingredients. Preheat the oven to 180C (350F, Gas 4).

3 Line an 8" x 8" baking tray with lightly oiled baking paper, spoon in the mixture and use a flat spatula to firmly press the

mixture into an even layer. You may need to spray or rub the spatula with a small amount of oil to help to stop it sticking to the mixture.

4 Put into the oven and bake for 35-40 minutes or until golden. Once cooked remove from the oven and place the tray on a cooling rack, use your spatula again to press down the mixture.

5 Allow to cool completely before lifting the mixture and baking paper from the tray and place onto a chopping board, then cut into evenly sized bars with a sharp knife. Store in an airtight container in the fridge for a quick and healthy snack. Great food for when you are on the go! ③



SERVES

4

HEARTY BEEF & PUMPKIN STEW

This is the perfect, homely dinner to look forward to as the autumn nights draw in. Adele Trathan explains how to make this delicious casserole that is baked and served straight from the pumpkin

INGREDIENTS

4 small sugar pumpkins (approximately melon sized)
500g (18oz) beef stewing steak, cut into 2.5cm (1 inch) cubes
3 tbsp vegetable oil
200ml (7fl oz) water
2 large potatoes, peeled and cubed
2 carrots, sliced
2 celery stalks, sliced
1 green pepper, chopped
2 cloves garlic, finely chopped
1 onion, chopped
1 (400g) tin chopped tomatoes
1 tbsp beef stock granules
Salt and ground black pepper

METHOD

1 Heat 1 tablespoon of the oil in a large saucepan over a medium to high heat. Place the beef in the saucepan and cook until evenly brown. Mix in the water, potatoes, carrots, green pepper, celery, garlic, and onion. Season well with salt and pepper. Bring to the boil, then reduce the heat to a simmer and cover with a tight-fitting lid for approximately 2 hours.

2 Dissolve the beef stock granules into the beef mixture and stir in the tomatoes.

3 Preheat oven to 170C/350F/gas mark 3.

4 Cut the stalked top off each of the pumpkins in a circular shape to

make a lid for later, once the pumpkins are baked. Scoop out all the seeds, leaving just the flesh. Place the pumpkins in heavy baking tins. Fill each pumpkin with the beef stew, to within an inch (2.5cm) of the top, which allows space for the pumpkin juices to seep into the stew. Brush the outside of each pumpkin with the remaining oil.

5 Wet each of the pumpkin stalks then wrap the stalk with tin foil to prevent burning when cooking. Replace the pumpkin lids back on each respective pumpkin then bake in the preheated oven for 1 to 1½ hours or until tender.

6 Serve the pumpkins with some rustic bread for a rustic, tasty and hearty meal. 🍴

LARGEST STOCKIST ON THE ISLAND

2011

D&S
CARPETS

2021

**Celebrating
10 years in business!**

**15% OFF all carpet orders and
10% OFF all hard flooring orders**

**INTEREST
FREE CREDIT**

Subject to status on orders over £495.
(Excludes fitting charges)

D&S Carpets are authorised and regulated by the Financial Conduct Authority. We are a credit broker not a lender – credit is subject to status and affordability, and is provided by Hitachi Capital (UK) PLC. Terms and conditions apply.



**THANKS TO ALL
OUR CUSTOMERS
OVER THE LAST
10 YEARS**

The Island's CARPET & FLOORING SUPERSTORE

12 Hurstake, Riverway Industrial Estate, Newport, Isle of Wight, PO30 5UU

OPEN 7 DAYS A WEEK • FREE ESTIMATES ISLANDWIDE

Mon – Fri 9am – 6pm, Sat 9am – 5pm, Sun 10am – 4pm **FREE PARKING**



01983 533150

www.dscarpets.co.uk

Rugs

Luxury
Vinyl Tiles

Wood & Natural
Flooring

Vinyls

Carpets





Crossing the Bar Project – three days of Inspired Walking with the New Carnival Company – part of the IW Walking Festival 2021.

The New Carnival Company (NCC) has created an original programme of 13 short and longer walks celebrating the Island’s coastal footpath, as part of three-year arts and walking project linked to the opening of the new National Trail - The England Coast Path – and a designated national ‘Year of the Coast’ festival planned for 2023.

The new England Coast Path, approximately 3000 miles long, will be the world’s longest continuous coastal trail and there are planned events and celebrations in towns and villages all along the route during the festival.

The Isle of Wight, boasting one of the most beautiful and varied of coastlines to be found anywhere in the country, is naturally a highlight of the new National Trail. We want to showcase and share what beautiful beaches, cliffs and estuaries, wildlife, heritage, and culture we enjoy, with people of all ages and abilities, residents and visitors alike.

These inspired walks bring together local artists, schoolchildren and communities, the IW Area of Outstanding Natural Beauty (AONB) and the IW Ramblers, in an innovative participatory programme to highlight special places along the route.

In each of six selected locations – Wootton, Bembridge, Niton, Brighstone,

Totland and along the Medina estuary, people are invited to join in for guided walks that connect to a site which has been interpreted by local people in a unique and creative way. Community Art installations and short performances will engage walkers at the crossover point of the short and longer walks in each location.

Crossing the Bar is inspired by Tennyson’s famous poem of the same name, written whilst travelling across the Solent to his home in Freshwater. The poem contemplates his future, life after. The New Carnival

Company has used this theme to start conversations about the future of our world as we emerge from the pandemic, and by exploring the changing relationship with our environment in the face of climate change.

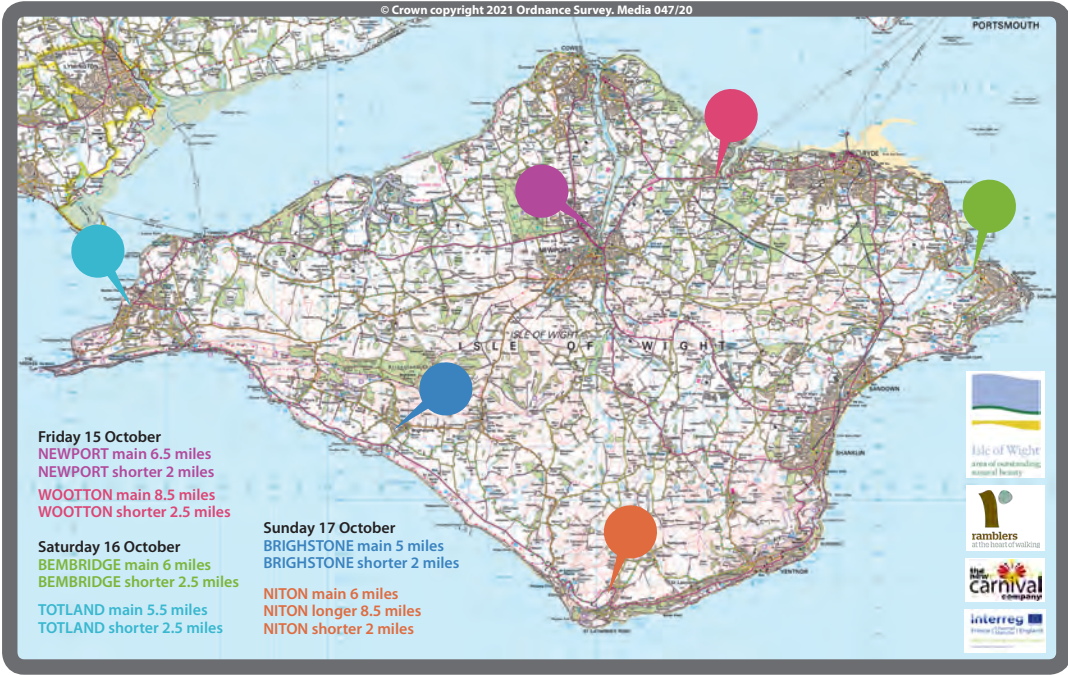
Dozens of volunteers have helped out in planning and leading the walks, each of which takes in a part of the proposed new coastal trail. Schoolchildren and their families have been making beautiful flags to bring along to the shorter walks and adult workshops in community settings are creating some of the imaginative responses to be

seen and heard along the way.

All the walks are all free to enjoy. The longer walks are number-restricted and pre-booking is required.

The New Carnival Company will be publishing the walking routes after the festival for all to enjoy at any time. They plan to double the number of sites for creative interventions next year, and in 2023 to lead and animate walks around the whole coastline for Year of the Coast celebrations.

See isleofwightwalkingfestival.co.uk for this year’s Crossing the Bar walks programme and booking information.





WIN A FAMILY TICKET TO WIZARD WEEK AT THE RAILWAY

Get ready for a spooktacular time at Isle of Wight Steam Railway this October half term, as witches, wizards and other ghouls take over Havenstreet.

With the witching season close at hand, the railway's getting transformed into a magical, spooky world between the 25th and 29th October.

It wouldn't be Halloween without a little magic so enjoy a real life magician conjuring up a few tricks. Meet the friendly witches of Havenstreet, become a spooky apprentice and help with some magic spells.

Watch the skies as the birds of prey from Haven Falconry swoop and dive. What's more halloween-y than an owl... owl-oween if you will? The railway's spooky team will also be in

the station yard telling terrible tales and mesmerising you with amazing illusions.

Plus, take the terrifying treasure hunt trail and explore the grounds before boarding the steam train, where a crafty witch will be dealing out treats (maybe a few tricks), then settle back for a journey through 'haunted' woodland.

We're giving away a family day pass (two adults and two children) to enjoy this exciting experience between the 25th and 29th October.

To be in with a chance to win, head over to the Hidden Island section of our website, telling us what your favourite Halloween film is, and why!

The competition closes on Friday 15th October.

 **Cherry Godfrey**

SAVE THE DATE

OPENING PARTY

9TH OCTOBER FROM 11-2PM

32 HIGH STREET, NEWPORT, ISLE OF WIGHT, PO30 1SR

COMPLIMENTARY REFRESHMENTS ♦ GIVEAWAYS ♦ FACEPAINTER ♦ FAMILY FRIENDLY

EVERYONE WELCOME

To celebrate the launch of its new Isle of Wight office, Cherry Godfrey is hosting an opening party. There will be refreshments, cupcakes, a facepainter and more.

There will be plenty of giveaways to enjoy as well as the chance for one lucky person to win an Isle of Wight gift card worth £100!



SPOOKY FARM FUN

Wanda the Witch is back with some new friends this Halloween half term.

From the 16th - 31st October, join Wanda and her team of Scatty Scarecrows in the Magical Pumpkin Patch and pick your very own Pumpkin straight from the stalk! These magical pumpkins are growing very fast and are in all sorts of sizes and colours, which one will you pick?

Then it's time to meet Rosella the Friendly Fortune Teller — Conjuring special tarot card readings for kids and their parents.. what excitement and wonder does your future hold!?

Finally, there will also be a 'Pimp my Pumpkin' carving cabin* where you can carve or decorate your

pumpkins with stickers galore — Don't worry, we will clean up the mess! Scarecrows love pumpkin slop.

Don't forget this is an all-weather event, so bring your wellies for the field and don't forget your coats.

Pumpkins will be on sale online very soon, and there will also be pumpkins to purchase on the day.

Farm admission must be booked in addition.

www.tapnellfarm.com/events

**adult supervision required for Pumpkin carving.*

Pumpkin Patch is a chargeable event, in addition to the Farm Park admission.



GRUESOME GRACE'S

Order our handmade terrifying treats to be delivered to your door this Halloween!



Free Island-Wide Delivery with all orders over £8



www.gracesbakery.uk/shop
01983 566868

The Entertainment GUIDE

Visit iwbeacon.com to see our full events guide

GO YELLOW WITH MOUNTBATTEN



Let's Go Yellow together so we can ensure that no one dies alone.

Go Yellow is for everyone — friends, family, work or community groups. You can get creative as you like!

- Wear yellow for the day (your pets could join in too)
- Host a charity collection box
- Only eat yellow food
- Host a Big Yellow Tea Party.

Every penny you fundraise will support Mountbatten to make sure patients and their families have access to skilled, compassionate, and sensitive care in a place of their choice.

This can include providing specialist end-of-life care to patients with life-limiting illness in their home or in our inpatient unit and day centre. We also support patients families, friends and carers through their illness and bereavement. As an independent charity, every donation makes a real impact to local people.

Find out more at mountbatten.org.uk



16TH-31ST
OCTOBER

PARANORMAL INVESTIGATIONS

HALLOWEEN AWAKENING

If you are fascinated by ghosts and the supernatural world, join one of two special Halloween week events at Northwood House in Cowes, the Island's most haunted venue.

On 26th & 27th October you can join a real paranormal investigation searching for

signs of the spirit world followed by two nights of "Ghost Stories and Legends" on 28th & 29th October with local author Tim Wander. It's going to be "spooktacular"!

Details at
www.northwoodhouse.org
Exclusive tickets only £22.00 per person. Over 16s only.

HALLOWEEN WEEK EVENTS AT



NORTHWOOD HOUSE & PARK

WWW.NORTHWOODHOUSE.ORG

26TH-29TH
OCTOBER

BE A STAR

AND SIGN UP FOR THE STARLIT TRAIL

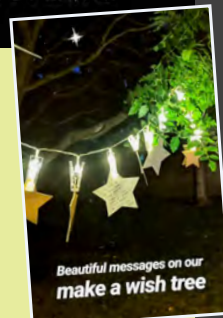
See the Isle of Wight in a different light at Wessex Cancer Trust's new illuminated fundraising walk, Starlit Trail.

Featuring stunning scenery, sparkling illuminations and spectacular live entertainment at every turn, the Isle of Wight's first Starlit Trail takes place at Ventnor Botanic Garden on the evening of Friday, October 15th.

15TH
OCTOBER

On the night, participants will also have the opportunity to leave a message pegged to the Starlit wishing line.

For a donation, walkers will receive a star to write their own wish or message to be lit up on the charity's dedicated memory tree. **To find out more and book your place, go to wessexcancer.org.uk/event/starlit-trail**



Go Yellow with Mountbatten

Join in on 1st October 2021
Whatever you wear, eat, do...
...make it yellow.

Find out more at
mountbatten.org.uk

Share:   



Registered with
FUNDRAISING
REGULATOR
Registered Charity No.1039086

Media partner:

THE ISLAND'S FAVOURITE

isleofwightradio

Island Carnival Memories

brought to you by the New Carnival Company



Rob (right) with Jim
'Skimbo' White, who led
the band for 50 years.

SPOTLIGHT ON VENTNOR COMIC JAZZ BAND

Contribution from Bob Trowbridge

Bob Trowbridge joined the iconic Ventnor Comic Jazz Band in the early 1970s. Although he was born into a 'carnival' family, he had never really played an instrument before — but that wasn't a requirement of the Jazz Band!

"The rules of Ventnor Comic Jazz Band. There are three rules. The first one is you're not allowed to drink. The second one is you're not allowed to practise, and the third rule is ignore rule 1 and 2. OK? It's quite simple. If you can't follow those rules you don't get in."

He now confesses to being able to play the trumpet 'badly'... "It's all by ear" he says.

Bob's great uncle dressed up as a Brigand in 1898: "It started as a Mop Brigade and most of the members then, goes back to 1894... were members of the Isle of Wight Rifles, and they dressed up in weird costumes and carried mops instead of rifles...do mock military drills and entertain the crowd. And in 1911 it suddenly morphed into a musical band, with inverted commas round the musical bit!"

"They played weird tunes with weird instruments, so it could be kazooos, home-made instruments... a horn off a gramophone attached to a



Bob, centre, aged 13 and his childhood friend Jill Holbrook playing Ann Boleyn in 1963. 'It was real fun, we entered every carnival on the Island that year, every kid's Procession, and we won every one' he recalls.

watering can or something like that, but in amongst it you would have a nucleus of people that could hold a tune and the others just used to make a noise as they went along. It's anarchy! You know, they would just sit down in the road in the middle of the procession, and...wander off into a pub and then rejoin. Yeah, it hasn't changed!"

A lot of the Jazz Band had painted faces, some wore masks and some weird and wonderful uniforms, as they do today.

"It's whatever you want really. We had a chap turn up in just a pair of 'y' fronts one year...We didn't say anything to him but ... I mean some people turn up and we don't even know their names. We wondered if he'd been visiting somebody else's wife the night before and been discovered and had to leap out the window just in his 'y' fronts. We didn't like to ask!"

Bob is currently writing a booklet about the history of the band 'it's part of our heritage' he says.



The Ventnor Comic Jazz Band aka The Isle of Wight Camel Corps, at Ventnor Carnival 2006

Island Carnival Memories is an Oral History project, capturing people's stories of carnival in years gone by. If you would like to contribute your own memories, please go to our Facebook page Island Carnival Memories and share. We would love to hear from you! Island Carnival Memories is supported by the National Lottery Heritage Fund. www.thenewcarnivalcompany.com

Supported using public funding for
ARTS COUNCIL
ENGLAND



LOTTERY FUNDED

Pics courtesy Bob Trowbridge

Da Vinci Mediterranean Restaurant & Bar

Christmas Menu Now Available

11 Holyrood Street, Newport PO30 5AU
For Bookings: 01983 300055
www.davinciow.co.uk

St. Wilfrid's Church, Ventnor

150TH ANNIVERSARY

It was a dual celebration for Ventnor's Catholic community in early September as St. Wilfrid's Church celebrated its 150th anniversary and the adjacent St. Wilfrid's School celebrated its 125th anniversary.

Contributed by the Isle of Wight Catholic History Society

A new book, just published by the Island Catholic History Society, gives a detailed account of the struggle to find a site for a church and also the anti-Catholic sentiment, which existed in Victorian times, and the determination of some to keep both Catholic and Non Conformist churches out of the seaside town.

Ventnor's "bracing sea air" from the English Channel was considered to be therapeutic for the various illnesses that prevailed at the time. Hence, in addition to sick laypeople, it was also, mainly sick priests who were sent to Ventnor. Consequently, they did not have the energy or enthusiasm to build a church and develop a Catholic community. Initially, they were met with anti Catholic sentiments, but this gradually gave way to a more pragmatic attitude among Ventnor's business community. They realised that Catholics would not come to Ventnor if their spiritual needs were not catered for. Hence, it was the shopkeepers and hoteliers themselves who would lose

out financially. Could they afford to turn away business, especially when an increasing number of wealthy European aristocracy (Empress Elisabeth of Austria for one) were coming to Ventnor.

After ten years of false starts and disappointments, opposition to a Catholic church in Ventnor began to decline and a site was purchased in Trinity Road on the periphery of the town and the Church of Our Lady and St. Wilfrid was opened in 1871. Surprisingly, it was (and still is) the only Isle of Wight church, dedicated to St. Wilfrid, Patron of the Island, who came to evangelise the inhabitants in A.D. 686.

Twenty five years after the opening of the church, St. Wilfrid's Catholic Primary school was built on the same site.

The church doubled its capacity with the extension of a side aisle in 1958, when there were three Masses on Sundays. These were packed in Summer months with holidaymakers.

Sadly, the church burnt down in December, 2006, due to an electrical fault. Virtually everything was destroyed,



The old St. Wilfrid's Church

The church doubled its capacity with the extension of a side aisle in 1958, when there were three Masses on Sundays.

including the beautiful Victorian stained glass windows. Holy Trinity C.E. Church, just across the road from St. Wilfrid's, very kindly provided a venue for Mass for the first year. After which, the old school hall was used, until the present replacement church was erected eight years later on the adjacent site. This church is smaller than the original, but it is appropriate today for the smaller congregation.

St. Wilfrid's is now a part of the South Wight parish,

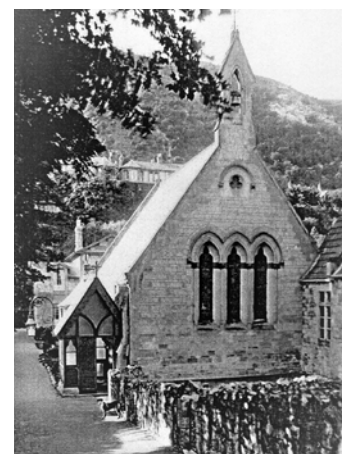
together with Sacred Heart, Shanklin and St. Patrick's, Sandown.

The history book, with a foreword by Bishop Philip Egan of Portsmouth, records not only the history of St. Wilfrid's, but also, the valuable contribution made by three religious Orders that were once in Ventnor parish; namely, the Benedictine nuns (before they moved to St. Cecilia's Abbey in Ryde in 1922); the Sisters of the Sacred Heart at Bonchurch and the Benedictine monks at Appuldurcombe (before they moved to Quarr Abbey in 1908).

The book is available from the Island Catholic History Society at £2-50 (£5-00 with post & packaging). 01983 566740 or email iow-chs@outlook.com. ③



The present St. Wilfrid's Church



MILL COURT BUSINESS CENTRE

*Our starter office has an
annual cost of £3,200*

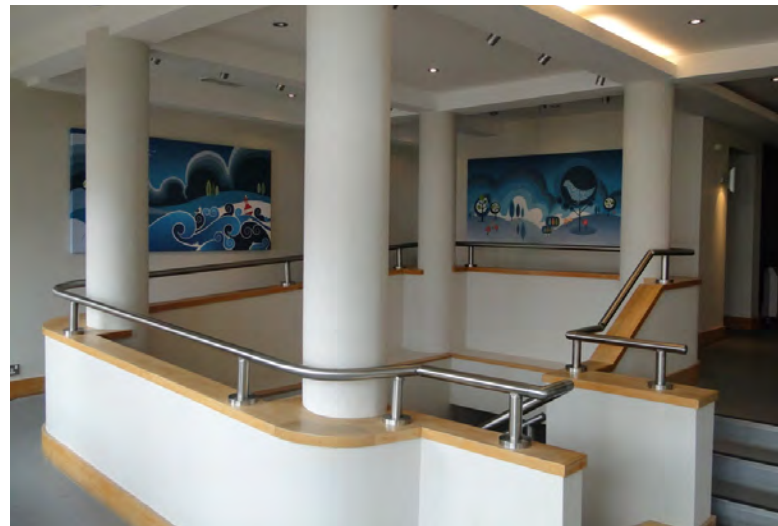
*Range of offices
available are from 120
sq ft to 1,100 sq ft*

Office Space in the Heart of the Island

Mill Court Business Centre, Newport, offers a wide range of office space and business leasing at the heart of the Isle of Wight.

Mill Court provides modern office lettings within a unique 19th century mill building, which through a constant programme of refurbishment and new build provides practical, efficient office space for companies requiring an attractive working environment.

Mill Court Business Centre lies on the edge of Newport Town Centre, and is convenient for all Island transport links.



For further information please:

Email info@millcourtbusinesscentre.co.uk

Call Chris Manhire on **07866 730979**

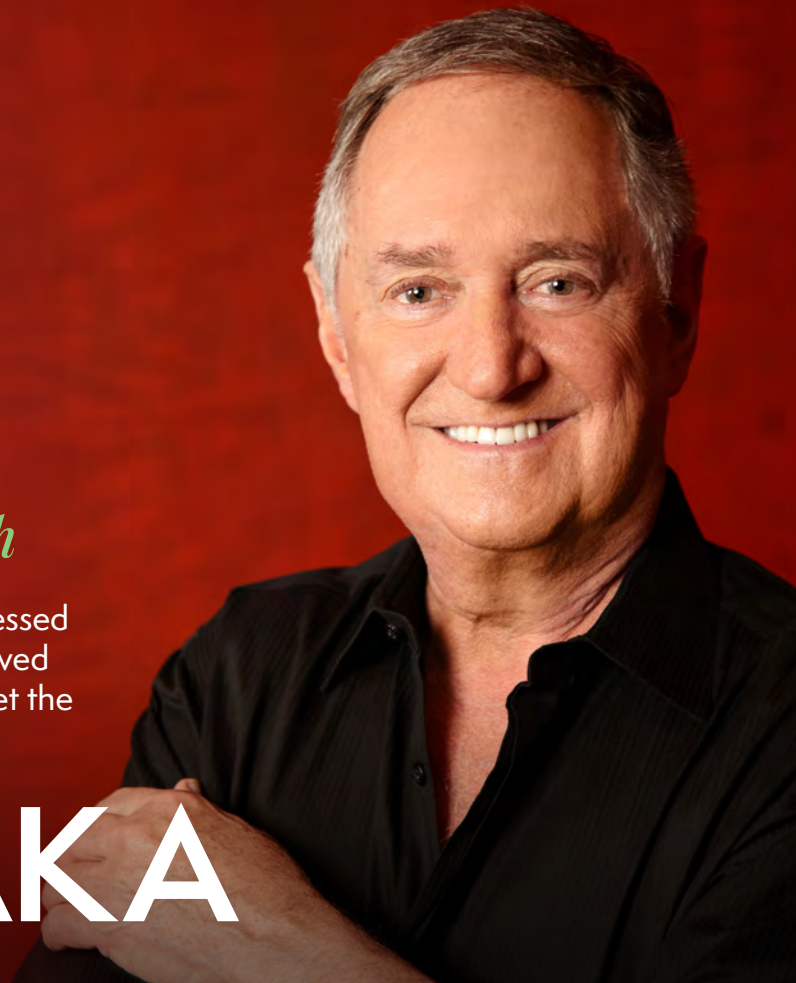
Visit our website www.millcourtbusinesscentre.com



A day to remember with

When I bought Neil Sedaka's vinyl 78s, pressed on black shellac, I could never have believed that one day a shy Island kid would even get the chance to meet him.

NEIL SEDAKA



By John Hannam

I grew up in East Cowes being fascinated by the original American rock 'n' stars. We rarely saw them, other than photos and features in the musical press. If we were lucky we might catch them in a cheaply made movie or a glimpse of their appearances on the world famous shows of Ed Sullivan and Perry Como.

The opportunity to meet him was to come in 2010. Philip Norman, a good friend of mine, was writing a musical with Neil called *Laughter In The Rain*. He told me to contact a London PR lady but she never got back. Perhaps I was considered small fry.

A few weeks later Philip rang to ask how the interview had gone and I had to tell him the bad news. He told me Neil was coming back for a private visit and he would personally fix it up. I was offered 15 minutes. In my *Oliver Twist* moment I asked for more. Back came the message from Neil's wife in America to say wait until the day. I headed for the

Dorchester Hotel for our 10am interview. I went up overnight and borrowed Craig Douglas' Dolphin Square apartment.

A porter carried all my equipment up to Neil's gorgeous suite. He welcomed me and said: "John it's great to meet you and we're going to have some coffee to get to know each other. I've put an hour aside for our radio interview."

I quickly wanted to find out about his early hits like *Diary, Oh Carol, Calendar Girl, Breaking Up Is Hard To Do* and *Happy Birthday Sweet 16*, many of which were written in New York's famous Brill Building, where they manufactured songs. It was also fascinating how Sedaka, a superbly trained classical pianist, could end writing songs like *I Go Ape* and *Stupid Cupid*, the latter a number one for Connie Francis.

He first came to England in 1961 to star on TV's *Sunday Night At The London Palladium*. By the end of 1962 he'd sold 25 million records and was second to Elvis Presley.

Neil has had some amazing highs and lows in his life. Like many American solo singers he eventually suffered from the group boom. His career took a dive

and work began to dry up and record companies were suddenly not interested.

"I was writing hits for other people but you do worry that you will never have your own hits again. People were asking me if I used to be Neil Sedaka," said Neil.

Ironically, it was the British group 10cc who put him back on the success path and, untimely, a bigger star than ever before.

He moved to Britain to record at their Strawberry Studios in Stockport. There he recorded several vinyl albums on his comeback trail. He was amazed to discover I had them all.

British hits came from those

sessions and in particular from an album called *The Tra-La Days Are Over*.

Elton John, a long time fan, liked what he heard and recorded a new American album with him called *Laughter In The Rain*, on his Rocket Records. That led to an amazing string of new world hits, one of which was picked up by Tony Christie and thanks to Amarillo and Peter Kay it became a national anthem in Britain. *Solitaire* has been recorded by Neil and so many other artists. He was perfect for the burgeoning singer/songwriter era.

His one man show has packed houses out all over the world, including London's Albert Hall and Hyde Park.

There's even been a musical called *Laughter In The Rain* written by him and Philip Norman. I was so impressed and saw it twice within five days. There were quite a few dark secrets revealed. ☺

I was so surprised to get that part. I was only 20 and it was my first movie



COVID-19 PCR Testing on The Isle of Wight

Same Day Antigen Fit-to-Fly £99



Reliable and efficient service on The Isle of Wight.

TESTS AVAILABLE 7 DAYS A WEEK

Our Services

- ✓ Fit-to-Fly from £99
- ✓ Test-to-Release from £149
- ✓ Return to the UK £40
- ✓ Antibody tests from £60
- ✓ Day 2 & 8 tests form £189

Why choose us

- ✓ Multiple processing times
- ✓ Pre-booked time
- ✓ Same day available
- ✓ UKAS accredited laboratory

T: 0330 025 2028

www.nlcliniow.co.uk

62 Crocker Street, Newport, Isle of Wight, PO30 5DA



NORTHWOOD
PRIMARY SCHOOL
www.northwoodpri.co.uk



Ofsted: Good, May 2017

contact us for further details

01983 293392

WEEKENDS ONLY THROUGHOUT OCTOBER (Weather depending)

Departs Thetis Wharf, Cowes (next to the Chain Ferry) at **0930 hours** to Gunwharf Quays, Portsmouth. Returning at approximately **1700 hours** from Gunwharf Quays back to Thetis Wharf, Cowes. (Please listen out for announcements for exact time). **Adults £9 / OAPs £8 / Children £7.** Price does not include admission to attractions

**Booking is essential before travelling.
Call us on 01983 564602**



Sailings are subject to any COVID restrictions in place at the time.
FACE MASKS are advised when inside the boat



We are more than electricians



**Boiler broken or in
need of a service?
Call us today for
a free quote**

01983 294 557

lemlecelectrical.co.uk





ZEN SPA

BEAUTY SPA TREATMENTS SUN BEDS WELLBEING YOGA

Now under new ownership, Zen Spa is the perfect place to pamper yourself and take some time out for your wellbeing.

Zen Spa is a newly refurbished, friendly and welcoming salon based in the heart of Newport with a professional and calming atmosphere. They want to make sure their clients feel relaxed and at ease whilst receiving five star treatments.

Zen Spa is all about making clients wellbeing the centre of everything they do. They know the right treatment can make you look — and feel — like a million dollars.

They are committed to only using top-of-the-line quality products for added luxury.

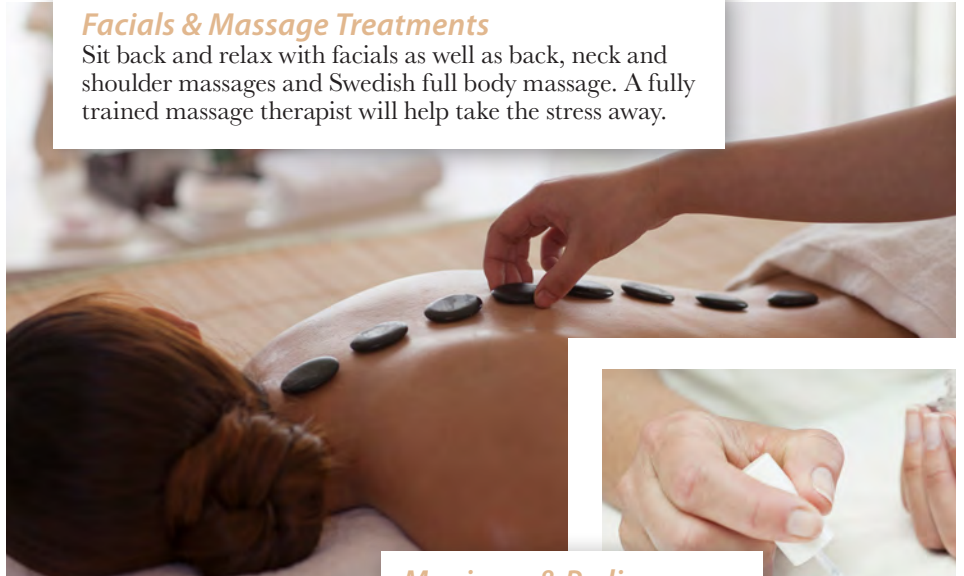
It's time to unwind with Zen Spa's

wide range of treatments including mud facials, deluxe full body massage, deluxe full body scrub and deluxe gel polish manicure and pedicure, there is a treatment for everyone.



Facials & Massage Treatments

Sit back and relax with facials as well as back, neck and shoulder massages and Swedish full body massage. A fully trained massage therapist will help take the stress away.



Manicure & Pedicure

Zen Spa's manicure and pedicure service ranges from standard and gel polish to deluxe as well as a full set of gel nail extensions and infills.



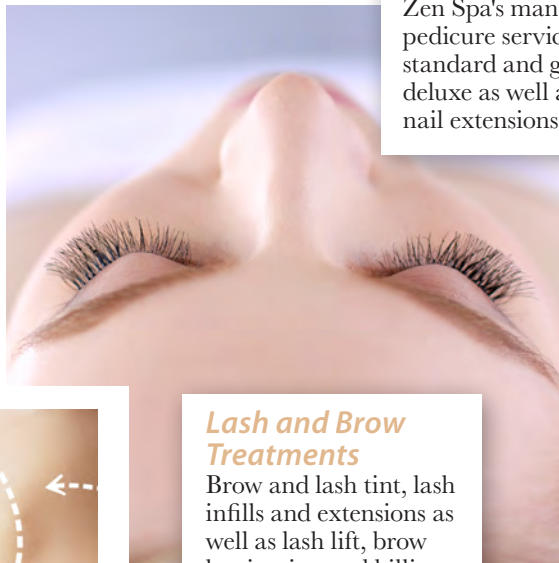
3D Lipo

3D lipo is a revolution in localised fat reduction, treatment of cellulite and skin tightening without the need to exercise.



Lash and Brow Treatments

Brow and lash tint, lash infills and extensions as well as lash lift, brow lamination and billion dollar brows.



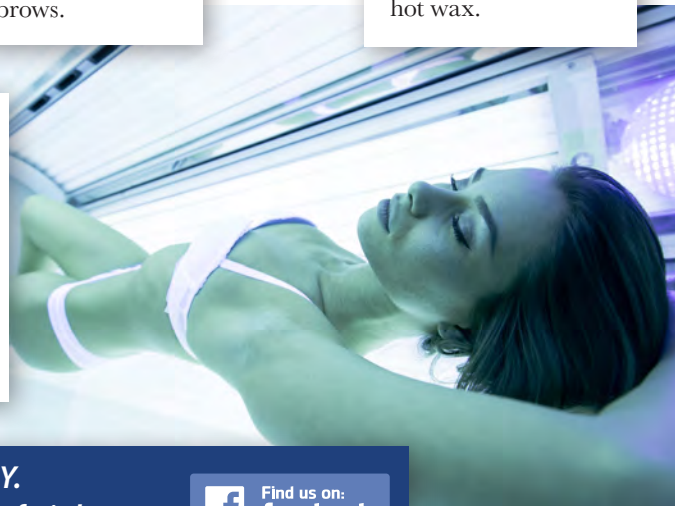
Waxing

Zen Spa provide both strip wax and expert hot wax.



Sun Beds

Enjoy a beautiful tan with the stand in sunbeds. You don't need an appointment just come in! They offer minutes and courses.



29B St James' St, Newport PO30 1HY.

Tel: 01983 524581 www.zenspaisleofwight.com



Find us on:
facebook®

ISLAND TALENT

Arts and sports groups, charities and members of the Isle of Wight Council Talented Athlete scheme will have their Wightlink sponsorship extended until the end of 2021 because of the continuing impact of the Covid-19 pandemic.





Despite restrictions easing, not all events and sporting fixtures have returned to normal. That means some groups and individuals have not had the opportunity to use Wightlink's travel sponsorship scheme.

"We are very proud of our Wightlink in the Community initiative which supports more than 50 charities, arts and sporting groups and around 80 talented and gifted individuals," says Wightlink Chief Executive Keith Greenfield. "We recognise 2021 has been another challenging year and want to extend our sponsorship until the end of the year when, hopefully, there will be more opportunities for people to travel."

One of the many sporting groups to benefit from the sponsorship scheme is Ryde Rowing Club. Chairman Steve Bull says: "We are very grateful to have our sponsorship extended, it is of great benefit to the club in these difficult times. With a minibus and 30-foot boat trailer to take to the mainland for competitions, Wightlink's support is invaluable."

Applications for future sponsorship will now open at the beginning of October each year, with successful applications confirmed in December and sponsorship beginning on 1 January. Wightlink has worked closely with the Isle of Wight Council to align the Talented

Application process with the new dates.

Alec Broome, sports development manager at the Council, says: "Wightlink has been a long-standing supporter of our Talented Athlete scheme. It is

It is designed to assist the Island's most gifted sportspeople to progress in their chosen sports

designed to assist the Island's most gifted sportspeople to progress in their chosen sports. We are very grateful for the discounted ferry travel Wightlink provides as many of them need to travel regularly off the Island for training and events. We are pleased that this year's sponsorship has been extended and look forward to re-opening our Talented Athlete scheme for applications in October." ³





News from Cowes Medina

by Cllr Lora Peacey-Wilcox

COVID: It still surrounds our daily lives. Please take personal responsibility, vaccine, hand wash, mask, distance, outside.

TOP UP VACCINES: The flu jab will shortly be offered to many of us over 50s. Please get it. It is hoped that top up vaccines for Covid will begin imminently with the clinically vulnerable first (as last time). As always, nothing is guaranteed and things change on an hourly basis with info from government.

VANDALISM: Sad that vandals caused much damage to many cars up St Marys and Moorgreen earlier this month. As if we all need the extra cost of wing mirrors and wipers! The police have been informed.

DOUBLE YELLOWS: Have been requested for the corner of Newport Road, by the reservoir site. Many parents are parking on this dangerous bend to drop their children to school.

STEPHENSONS ROAD: I have requested Island roads to survey the road and give me a date for when resurfacing is expected.

DEAD END: I have requested a sign goes up at the end of Pelham Road to let cyclists/pedestrians and cars know it is a dead end.

JOBS: As furlough ends I fear financial crisis is inevitable. Data for August is

3,770 unemployed; 2,055 aged 25-49, 1,905 over 50 and 610 18-24 year olds. We have a severe shortage of 'carers'; and hospital staff. We have MANY organisations willing to train up those interested. PLEASE get in touch, and I will put you in touch with correct people. Come forward. We are also desperate for people willing to offer an hour or two in the voluntary sector.

HELP IS OUT THERE! : No one should feel there isn't help or support. The Island is brimming with support groups. www.islehelp.me is incredible, as our Citizens Advice IW. www.citizensadviceiw.org.uk PLEASE make that step to contact them.

REPAIR CAFE: Don't throw - help to get it repaired! Quay Arts Centre, Newport. Or could you be interested in setting one up locally? info@planetaware.co.uk.

WINTER/HOUSEHOLD PLANTS: Buy local. Support Men in Sheds in Cowes. Fabulous selection. Somerton Industrial Estate.

DON'T BUY NEW! Money is tight and Christmas is coming...look at the Storeroom for some amazing deals! Somerton Industrial Estate.

☎ 645765 📧 lora08@sky.com

Oyster baby boom in the Lymington River

Up to an incredible 120 million oyster larvae are being released into the Lymington River under a new environmental project involving Wightlink.

The recent bivalve baby boom is the product of a colony of 300 oysters introduced to Wightlink's terminal at Lymington as part of ongoing work with scientists at the Blue Marine Foundation, the University of Portsmouth and University of Southampton. While only a fraction of the larvae will go on to reach adulthood, the natural cycle of the colony nevertheless plays an important part in supporting the nearby ecosystem.

The ferry company is also working with the Blue Marine Foundation, the Zoological Society of London and the University of Portsmouth to record the native oyster population in the waters off the Isle of Wight. Both projects are part of Wightlink's green initiative, aimed at reducing its carbon footprint and operating in harmony with the Solent's marine environment.

"Oyster reefs are important as they filter the water, reducing the impacts of excess nitrogen, stabilise sediment, enhance fish production and also provide habitats for hundreds of

species," says Dr Luke Helmer, Restoration Science Officer at the Blue Marine Foundation.

"Tragically, reefs have declined by 95% around the UK's coastline and their critical inputs have been lost from the environment. In order to increase the number of breeding oysters within the Solent, we have been working with Wightlink and other partners to create high density populations which release millions of larvae.

"The new colonies, suspended in nurseries underneath pontoons, have been shown to provide a refuge for other marine life. Up to 130 different species having been found living within the colonies so far, including critically endangered European eel, juvenile spiny seahorse and sea bass."

Wightlink Chief Executive Keith Greenfield says: "As we cross the Solent thousands of times a week, we want to make a real contribution to enhancing the environment beneath the waves. We are fortunate to be operating in an area that has a wealth of scientific know-how to help us to do that. These experts are helping us to make sure what we do really does have a positive impact on the Solent's diverse ecology."



THE COURTYARD AESTHETIC CLINIC DOCTOR HAYLEY ELSMORE

There is a new way to love the way you look.
boost your confidence and feel... like a new you.

Feel great in your skin



Opening in Newport this October, The Courtyard Aesthetic Clinic will be a luxury state-of-the-art clinic from Dr Hayley Elsmore.

Offering world-class skin care, the very latest Aesthetic treatments and five-star patient care - from a clinic you know you can trust.

Pre-book your appointments by calling
01983 241214 or see thecourtyardcliniw.co.uk



Wightlink's Head of Port Operations Dean Murphy surveys the Solent oyster colony at Lymington port with Dr Luke Helmer from the Blue Marine Foundation

Farmer Launches Service to Improve Animal Welfare

By Iona Stewart-Richardson

An Isle of Wight farmer is launching a revolutionary service that will not only save the farming industry millions of pounds a year but also improve animal welfare.

Livestock Lookout aims to keep livestock safe and has been developed by Tim Rogers who was inspired by his own first-hand experience.

Tim, of 250-acre Palmers Farm at Wootton (which is nestled in the shadow of Queen Victoria's former home at Osborne House), came up with an idea whereby you can simply text a central number that then privately alerts the farmer, so they can respond accordingly.

The Isle of Wight National Farming Union is also backing the scheme, which has been trialled successfully on the Island and is now being rolled out nationally.

Tim said he has had a good response from local farmers: "We trialled it here with well-known farmers and they have found they have been able to whittle out any false incidents and they have been able to respond quickly and efficiently to genuine incidents on their land.

"The farmer remains anonymous because we have a central number now where the walkers can text 'help' and then each board next to the farmer's field has a location number and the walkers are asked to enter that location number too.

"They then text back and ask what the issue is... It could be a rural crime too which is an increasing problem at the moment, the texts will go through to the farmer to give him as much information as possible. If it is an emergency he will get a call from the intelligent technology, telling him there is an incident on his land."

Another benefit of the project is it provides a quick response to dog attacks, which the NFU Mutual estimates cost farmers around £1.3m in 2020.



Livestock Lookout can also help tackle other problems including: Escaped cattle, livestock theft, damage caused by straying animals and issues with gates and fencing.

With more people spending more time in the countryside as a result of changing habits in a post-Covid world, Tim believes his new service is becoming available at just the right time.

Tim added: "Increased use of the countryside presents both a challenge and an opportunity. It is a challenge because some people will not be familiar with the countryside code, but also an opportunity as they also present a useful and plentiful source of eyes and ears for the farmer."

The Livestock Lookout concept works by giving farmers 24/7 year-round support to keep an eye on their land and livestock through highly visible signage and intelligent technology.

Tim explained how it all started when a cow escaped from one of his fields: "The first we knew of it was via a post my wife Danielle came across on Facebook. By then it had become quite a serious incident. The cow had knocked someone over – thankfully they were not hurt too badly – and had damaged a car.

"After that, we put up a sign giving our contact number in case there were any future problems. But all that did was generate unwanted phone calls from people wanting to use our land for anything from metal detecting and camping to motocross.

"It was clear we needed a more effective early warning system that also kept our own personal details anonymous – and that is exactly what Livestock Lookout does."



News from Cowes West and Gurnard

by Cllr Paul Fuller

E-SCOOTERS: More unruly e-scooter riders disregarding traffic orders in Shooters Hill and Cowes High Street have been reported, whilst more visible enforcement has been requested to the police.

DRAFT ISLAND PLANNING STRATEGY: Thank you to everybody who gave feedback to the intended new planning bible for 2023 and 2038. Now this is over I am absolutely exhausted, as over the last few weeks the plan has been 'on the road' on 40 occasions, in different locations throughout the Island. These included Parish Councils, libraries, Councillor drop-ins and pop up shops. During this time, myself and officers met over 500 different residents.

HIGHWAY WEEDS: Councillors continue to receive complaints from residents regarding the spread of weeds on pavements, roadsides and grass verges. This follows cuts in last years' budgets as well as Island Roads seeking alternatives. As I write this the cabinet member, Cllr Jordan is in dialogue to find a long term solution.

ENVIRONMENTAL HEALTH MATTERS: Garden bonfires, security lighting, weekend DIY tomfoolery and hot

tub parties have all been reported to Environmental Health in Cowes and Gurnard last month. If you are intending anything with the potential to upset your neighbours, please talk to those nearby first.

ENERGY BILLS: OFGEN reports that for 15 million energy customers, bills will increase as from 1st October. This follows an increase to the Fuel Cap which OFGEN negotiates with energy supplies.

To counter increases, a number of independent search engines can support customers get the best deal. These include: www.moneysavingexpert.com/ and www.uswitch.com/ Tel: 0800 688 8557. Locally, The Footprint Trust can help to reduce your energy bills. Please call: 01983 822282.

PLACE ROAD: Following requests Island Roads have advised they see no justification for reducing the speed limit to 30mph for the length of this fast road. In response, the police have been asked to monitor the speed.

☎ 289595/ 07935 090 835
✉ paulfulleriw@gmail.com

Here at Pertemps we have skilled candidates ready and waiting to hear from you...

We can fulfil your **recruitment needs** at short notice, and send you the very best people to help you in your hour/day/week of need.

INDUSTRIES WE RECRUIT IN:

- Bar Staff
- Warehouse Assistants
- Customer Service
- Waiting Staff
- Pickers & Packers
- Administrators
- Cleaners
- Engineers
- Accountants & Bookkeepers
- HGV Drivers
- Machine Operators
- Event Staff
- Van Drivers
- FLT Drivers

IS AROUND THE CORNER

For all **Industrial and Driving** enquiries:

☎ **01983 533235**
✉ Joelee.Rowe@Pertemps.co.uk

For all **Office based, Technical and Event** enquiries:

☎ **01983 533235**
✉ Rhianon.Morey@Pertemps.co.uk

Pertemps
the face of recruitment

www.pertemps.co.uk



News from Central Newport

by Cllr Julie Jones-Evans

After many months of surveys, reports and financial preparation, Newport and Carisbrooke Community Council (NCCC) has bought a substantial building in the High Street. I'll be in a position next month to say which building it is, once the legal part has been completed.

This is our first major investment into a community asset, we have borrowed £400,000 from the Public Works Loan Board over a 12 year period, which will cover the purchase and the first phase of works. NCCC will use it as our base for the team, public meetings, public engagement, pop up shops and a long anticipated Heritage Centre for Newport. We have had a feasibility study done, showing possible uses for the upstairs and how the large ground floor can be reconfigured to allow a flexible space for our potential uses. Working with the High Street Heritage Action Zone we have begun the process for applying for grant funding to improve the shop front and create a High Street entrance for the upper floor.

I know it's a bit early but we are all getting excited about the Christmas Fayre this year as the community council is having a skating rink down on the Quay as part of the light switch on celebrations on November 20th.

521068/ 07886437688

julie.jones-evans@iow.gov.uk

Resident Parking Zones Introduced on Road in Newport

By Oliver Dyer

Resident parking zones are being introduced on Caesars Road in Newport.

The Isle of Wight Council says the introduction of parking permits follows a vote from residents in 2019.

Letters were sent to nearby addresses with voting slips attached. The council says the move comes as a result of residents contacting councillors 'over a number of years'.

An Isle of Wight Council spokesperson said: "In 2019 the council carried out a survey to look into the possible introduction of residents' parking within the street. This was as a result of requests from residents to elected members over a number of years.

"Once the survey work had been completed and residents had their chance to vote, the council wrote to residents informing them that the outcome of the vote was that a residents' parking scheme would be implemented.



has been undertaken since that time and Island Roads are now in the process of introducing the signs and lines within the road."

Parts of the road will see non-residents allowed to park for a maximum of two hours between 8am and 6pm, Monday to Saturday.

While other parts will be for permit holders only, and some will be marked 'no waiting at any times'.

Signs and lines for the new parking zones have already started to appear along the road.

"A significant amount of work

Isle of Wight Top in Country for Buried Treasure

By Iona Stewart-Richardson

The Isle of Wight is one of the top places in the country where you can discover buried treasure.

That's according to statistics from the Digital, Culture, Media and Sport Treasure and portable antiquities statistics collection.

Since 2012, the total number of finds on the Island per 100,000 people is 129.3.

From 2012 to 2021 there were 184 discoveries made on the Isle of Wight, with some items dating back to before the Bronze Age.

According to a report by jewellerybox there were 30 discoveries made on the Island alone in 2013 — making it the best year yet.

Norfolk has been rated the second-best place to find buried treasure followed by Dorset which came in third.



FREE EVENT

FREE DRINKS

JOIN IN ONLINE

WINTER IS COMING

FREE HELP AND INFO ON:

- BENEFITS AND MONEY
- GRANTS AND ALLOWANCES
- CUTTING ENERGY AND WATER BILLS

Thursday 14 October 2021
9.30am to 1.30pm
Riverside Centre,
Newport Quay, PO30 2QR

To join online visit
f FootprintTrust from 2pm to 4pm

Get in touch for more information or immediate help ☎ 01983 822282
 ✉ info@footprint-trust.co.uk

Event supported by Energy Industry Voluntary Redress Scheme and Newport and Carisbrooke Community Council

The Footprint Trust Ltd is a not-for-profit company registered in England and Wales.
 Registered Charity No. 1106024. Registered Company No. 04587815. www.footprint-trust.co.uk

Isle of Wight Walking Festival's 100 Walks

The Isle of Wight Walking Festival gets underway next month, with ramblers of all ages and abilities taking part in 100 different Isle of Wight walks.

From Saturday, October 9 until Friday, October 22, a variety of walks graded from gentle to strenuous, will take place across the Island.

Organised by Visit Isle of Wight in association with the Isle of Wight Ramblers Association, the National Trust

and a number of volunteer 'Walk Leaders', walkers are being encouraged to book their spaces, as some walks are filling up fast.

The walk includes 13 family friendly walks hosted by the New Carnival Company featuring community arts installations, ghost walks with local expert Marc Tuckey, a forest ramble with DJ and Camp Bestival organiser Rob Da Bank, while toddlers and young children can join the

hunt for real life unicorns with the 'Unicorn Treasure Hunt and Story Time' at the Island Riding Centre.

Sarah Alexander, Co Project Manager of the Isle of Wight Walking Festival says the line-up of walks offers something for everyone: "We are excited to offer over 100 unique and special walks – new and old – across the whole Island, hosted by our knowledgeable Walk Leaders and volunteers.

"We are looking forward to seeing people switch off and enjoy the great outdoors on the Island this autumn."

"There's a route for everyone, of all ages, from historical short strolls to longer treks that get the heart racing — it's something to do with your family, your friends or on your own.

"We are looking forward to seeing people switch off and enjoy the great outdoors on the Island this autumn." **More details at isleofwightwalkingfestival.co.uk.**

Monthly Repair Café Launches in Newport

By Iona Stewart-Richardson

A monthly Repair Café has been launched in Newport, following a successful trial run in late July.

Hosted in the Quay Arts conference room, the Repair Café will offer people the chance to bring broken items for repair that might otherwise end up on the scrap heap.

As part of the Repair Café ethos customers will have the chance to learn how to do their own repairs – and even get involved in the repair itself!

The impetus for the Repair Café project came from West Wight resident Fern Presant – who sought the help of Planet Aware to get the project up and running.

A meeting in Newport 18 months ago was full of people keen to be involved, but unfortunately, the project had to be halted because of the pandemic.

Nevertheless, a committed band of volunteers from across the Island met regularly on Zoom to keep the project alive and finally launched a trial run in late July. With the help of a small team of repairers, nine items were repaired, enabling them to stay in use for longer.

Fern said: "This is such a wonderful project, not only is it great to see things repaired, it is an opportunity for people to learn new skills and connect with others in the local community."

Now the Repair Café is opening its doors to the public and will run monthly until at least the end of 2021 at Quay Arts.

Repair slots can be booked online at www.eventbrite.co.uk/e/repair-cafe-isle-of-wight-tickets-168084947603.

Repair Café Isle of Wight is supported by Sovereign Housing and Planet Aware.



IDM LIMITED

The South's largest supplier of Helly Hansen workwear branded to your business needs.

idmlworkwear.co.uk

Snowdrops and Rosemary

EXCEPTIONAL PEOPLE. EXTRAORDINARY CARE

Care in *your* Home. Tailored to *your* needs

Our wonderful team can offer you the support you want, when you need it, so you can continue living from the comfort of your own home. With help from as little as half an hour a week to up to several visits a day or 24 hour support.

We are a family run business, who employ all our carers locally. As our carers are local, we provide support to clients in the Cowes, Newport and West Wight areas.

Snowdrops and Rosemary, Gurnard Pines, Cockleton Lane

☎ 01983293340 ✉ contact@snowdropsandrosemary.co.uk

🌐 www.snowdropsandrosemary.co.uk



NOW HIRING



We offer genuine caring people who will give you a standard of care and support that can really make a difference to your life.

Services we offer include:

Personal care, medication, shopping, help around the house, going in/out of hospital, specialised needs, companionship, holiday/mainland assistance, day sits, sleep-ins, 24/7 care/assistance.

We can visit you to discuss what you require, under no obligation and plan a way forward that suits your requirements. All staff are police checked and fully insured. CQC registered.

Do you need assistance to have the quality of life that you deserve?

Don't just think
care - SAY care
**NOW
RECRUITING**

 **Say Care Limited**
Liber Libera, Liberum

Afton Road, Freshwater (opposite garden centre)

For a full price list or further information please contact:

Telephone: **01983 716686**

Email: **saycarelimited@gmail.com**

www.saycare.co.uk

— | LEGAL & FINANCIAL | —

Lasting Powers of Attorney – Important at every age

An LPA can be a positive and effective legal tool, which ensures your wishes are respected should you ever lose capacity. This could be in older age or as a result of an accident or illness in your younger years.

Top tips on drafting a lasting power of attorney

Solicitors for the Elderly (SFE) is an independent, national organisation of over 1,500 lawyers, such as solicitors, barristers, and chartered legal executives, who provide specialist legal advice for older and vulnerable people, their families and carers.

Here are SFE's top tips to ensure your lasting power of attorney is effective, legally robust and safe:

Plan early – While you have capacity, it's vital that you get your affairs in order and choose the best people to manage your affairs, in case of an accident or illness. You can't appoint an attorney once you lose capacity.

Choose carefully – Think carefully who you want to appoint as your attorney and have an open conversation with them so they understand your wishes and what their responsibilities will include. Consider

A Lasting Power of Attorney (LPA) is a powerful legal document that allows a person to appoint trusted individuals to make important decisions about care and finances on their behalf, in the event of a loss of mental capacity through an accident or illness such as dementia.

appointing more than one person as your attorney so they can share the responsibility.

Consider appointing a professional

– A family member might not always be the best person to act as your attorney. Instead, you can appoint a professional such as a solicitor. They can act as a neutral third party and make unbiased decisions that are in your best interests. Bear in mind this usually involves a cost.

Think about different circumstances

– Consider how you would like your attorney to manage your property and financial affairs in different situations. For example, are you happy for your property to be sold to pay for your care costs?

Address the difficult questions

– Your attorney might have to make difficult decisions about your health and welfare.

If you have specific wishes around your care plans, medical treatment, or end of life wishes, make sure you discuss this with them and make your choices clear in your document.

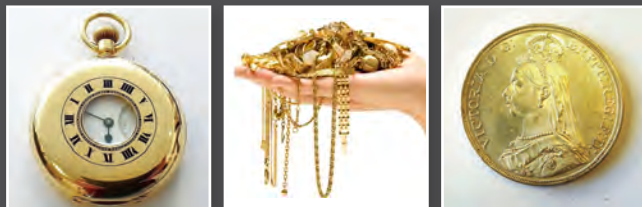
Seek professional advice – Setting up LPAs without such input may be appropriate for those with straightforward financial situations or with considerable legal experience, but for most people, seeking professional legal advice is the best way of ensuring that an LPA is effective, legally robust and safe.

Keep your plans current – Make sure you keep your LPA updated if your circumstances change. Your choices around the people you want to be responsible for your finances and wellbeing may change, such as following a marriage or divorce, when children reach adulthood, or if parents pass away.



Victoria Antiques Shanklin

FREE Valuations on coins, banknotes, medals, also silver & gold items such as boxes, jewellery & pocket watches. We will make you an offer on all of the above if you wish.



We can pay you by cash, BACS, Paypal or cheque.

Find us at 50A Regent St, Shanklin
PO37 7AE. Tel: 01983863632
www.victoria-antiques.com
(open Monday to Friday 10am - 4pm- no weekends)

PLEASE CONTACT US TO MAKE AN
APT OUTSIDE OPENING HOURS



Funeral Plans from William Hall Independent Funeral Directors

Planning ahead for peace of mind

A funeral plan provides peace of mind for you and those you care about. You make the arrangements in advance, specify your wishes and take care of the costs. We recommend funeral plans from Golden Charter, the UK's largest independent plan provider. With a Golden Charter plan you'll benefit from:

- Paying at today's prices for a service you may not require for many years
- A guarantee of nothing more to pay for our services
- A choice of a range of plans – with the option to personalise your own
- The reassurance that your wishes will be carried out, sparing your loved ones uncertainty and distress

Taking out a funeral plan is one of the most thoughtful decisions you could make.

To find out more about Golden Charter funeral plans from William Hall, please return the coupon below, phone us, or call in.

Mr/Mrs/Ms: _____ Initial: _____ Surname: _____

Address: _____

Tel no: _____

Send to: William Hall Independent Funeral Directors, Sunnybrow
Winford Road, Newchurch, Isle of Wight PO36 0JX

Tel. 01983 868688



Golden Charter
Funeral Plans



£150 of M&S Vouchers

Awarded to every new Golden Charter Funeral Plan taken out between 1st October to the 31st October 2021 with William Hall Independent Funeral Directors, Sunnybrow, Winford Road, Newchurch PO36 0JX. www.williamhallfuneraldirectors.com

*"We don't just sell hearing aids,
we provide total hearing care"*

Wight *Sound* Hearing

Registered Healthcare Professional
Colin Stockdale RHAD MSHAA AIHHP (Executive Member)

12 High Street, Shanklin PO37 6LB
Tel 01983 86 59 59

All Hearing Tests and Consultations are FREE

Latest Digital Testing & Fitting Equipment

Video Oscope (see inside your own ear)

Try Before You Buy OR RENT a Digital
Hearing Aid (from £1 A DAY)

Free
Home Visits

EVERY Brand of Hearing Aid
Available in the UK

Easy Payment Plans

VENTNOR MOBILITY CENTRE



Regain your independence...

Agents for scooters, rise/recline chairs,
stairlifts and all available mobility aids



**FREE HOME SURVEY - We also Buy and Sell
- Can't come to us, we'll come to you!**

Unit 4, Old Station Road, Off Mitchell Avenue,
Old Station / Tunnel, Ventnor PO38 1DX
Tel: 01983 855545

**PRE-BOOKED APPOINTMENTS ONLY
TO AVOID DISAPPOINTMENT**

BARNEY'S TYRES

Tyres at great prices!



BUDGET, MEDIUM & BRANDED
RANGE TYRES FOR CARS,
VANS, 4X4'S & TRAILERS
ALL AVAILABLE AT LOW PRICES!

- PUNCTURES & WHEEL BALANCING
- OPEN 8-5.30 MON-FRI & 8-1 SAT
- NO NEED TO BOOK, JUST TURN UP!
- ACCEPT CASH & CARD PAYMENTS
- UNIT 4, ALBANY CENTRE, FOREST ROAD, NEWPORT, ISLE OF WIGHT PO30 5NB



**WE CAN FIT YOUR TYRES
AT WORK OR HOME!**



Mobile fitting service - call & book a convenient time for you

T: 01983 529061

M: 07788 817511

ST HELENS SERVICE STATION ALL MAKES SERVICE & DIAGNOSTICS

Factory level diagnostics & services for BMW, Volvo, Peugeot, Citroen and Renault
Genuine parts supplied for Jaguar, Land Rover and Porsche



VOLKSWAGEN • PEUGEOT • RENAULT • CITROEN • BMW • MERCEDES



**MOTs AVAILABLE FOR ALL
MAKES & MODELS**

Embankment Road, Bembridge PO35 5NS. Tel. 01983 872332 or 07920 224181



Direct Cremation Specialists based here on the Isle of Wight *for* the Isle of Wight
 The Island's only Independent Funeral Directors who are dedicated to this style of service
Affordable Direct Cremations. Separate the Cremation from the Celebration.

**Direct
cremations
from £1,495
Funeral Plans
from £1,750**

Golden Charter
Funeral Plans

Unlike mainland providers, we can take your loved one into our care day or night without the need for travelling over by ferry, involving delays, distress and additional costs to prices quoted.

We pride ourselves by offering great value for money without any compromise on the care given to you and your loved ones.

We are proud to be the longest service Island Independent Family Funeral Directors.

Call 01983 632598 info@isleofwightdirectcremation.co.uk
www.isleofwightdirectcremation.co.uk

What is direct cremation?

Quite simply, it is an alternative to a traditional funeral. The cremation takes place unattended, giving you the freedom to celebrate your loved one at a time, place and venue of your choice.

How much does a direct cremation cost?

We have 2 options to choose from:-

1. Our 'Island Way' is £1,695.00 - this is for the direct cremation at the Isle of Wight Crematorium
2. Our 'Wessex Way' is £1,495.00 this is for a direct cremation at a mainland crematorium

We offer this option for families who would like to take advantage of savings that mainland crematoriums offer.

Can I get help with the costs?

Yes, if you are in receipt of benefits you may be entitled to a payment of up to £1,000 from the Department of Work and Pensions, so we advise contacting them to enquire.

What is the difference between Isle of Wight Cremation and a mainland provider?

We are based here on the Island, we can take your loved one into our care promptly and without the distressing delay of travelling over on the ferries.

We can meet you face to face at our Island offices. Or make all arrangements over the telephone.

Whereas mainland providers often courier the ashes back, we provide a more personal service by hand delivering them to you at your home, or you can come in and collect them at either of our offices. We are locals and understand our local community.

Do you offer prepaid direct cremation funeral plans?

Yes, we do and we use Golden Charter, the UK's market leader for providing prepaid funeral plans to Independent Funeral Directors. Your funds are safe and placed into the Golden Charter Trust. Recently we were awarded by Golden Charter as the best funeral planner for 2020 in the Southern England Region.



Brilliant BULBS



When planting bulbs for indoor displays, choose the containers carefully – they'll be on show just as much as their contents. Don't limit yourself to conventional flowerpots. Flea markets and charity shops are great hunting grounds for quirky containers; search out vintage ceramic bowls, teacups and tureens – even forlorn teapots with missing lids can be repurposed!

Note the potential height of the bulbs. Larger and taller plants require bigger containers – for aesthetic appearance and also practical stability. Some containers aren't reliably watertight. Use glazed saucers and protective mats on vulnerable surfaces, or group several containers together on a waterproof tray. Top-dressing the soil with coloured gravel gives a sleek, contemporary look, or use moss or chipped bark to create a rustic theme. Heavy-headed hyacinths and tall narcissi will require support from bamboo canes or twigs.

If the container has drainage holes, use ordinary multi-purpose potting compost, adding a handful of grit to aid drainage. For those without holes, bulb fibre is preferable. This super-absorbent material is made from shredded coir and

The shorter days are here, but a succession of potted indoor bulbs will give your home colour and cheer throughout winter, writes Flo Whitaker

wood. It provides a uniformly moist growing medium that prevents water 'pooling' around the bulbs and damaging the roots.

Some bulb packets, (typically narcissi and hyacinths) are labelled, 'prepared'. This means the bulbs have been artificially subjected to a period of cold in an industrial chiller. Pre-chilling manipulates the growth cycle; the bulbs think winter has already occurred and start into

Flea markets and charity shops are great hunting grounds for quirky containers



rapid 'springtime' growth when planted. Prepared bulbs will reliably flower around Christmas time.

They're expensive, but don't assume you can save money by purchasing standard bulbs and administering the cold treatment yourself.

A domestic fridge has a damp atmosphere and the bulbs will probably rot. There's nothing worse than the stench of rotting bulbs – the aroma lingers for days. Trust me...

With forward planning, you can have a succession of bulbs from December through to April. Following on from the 'prepared' types, choose narcissi that are naturally early to flower. Try 'Cragford', 'Soleil D'or', 'Avalanche' and the aptly-named 'Erlicheer' for colour throughout



WHITE INDOWS

THE ISLAND'S PREMIER DOUBLE GLAZING COMPANY

TRANSFORM



YOUR HOME

- W bring life back into your home with your very own, perfectly designed orangery or conservatory
- W enjoy the sunshine in summer and the warmth in winter
- W match your existing windows, doors and brickwork

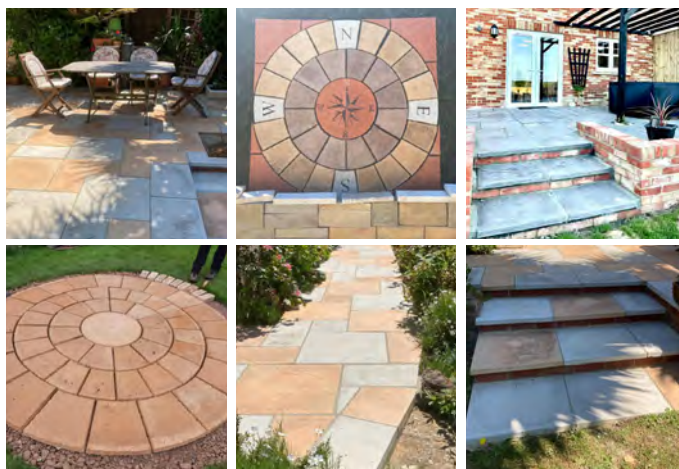
CALL TODAY
01983 523552

whitewindows.co.uk - info@whitewindows.co.uk

ISLAND PAVING (01983) 526667

PAVING AND BLOCK WALLING

- Concrete posts and gravel boards
(Made to order)
- Smooth and Rock finish



Deliveries island wide

FUEL BOX

BECOME A STOCKIST TODAY!
IDEAL FOR RURAL AND LOCAL SHOPS
THE REVOLUTIONARY BAG-IN-BOX FUELLING SYSTEM

Join over 1800 stockists nationwide
and you will receive FREE:

- Storage bund tray
- Display boxes
- Leaflets
- Posters
- Branded pens



fuelbox.co.uk

store pour recycle

Contact your local supplier, Solent Fuels
01983 654321 for more information



January and February. For later blooms, 'Silver Chimes', 'Cheerfulness' and the gorgeous, but stupidly-named 'Geranium' extend the season to Easter and beyond.

Tiny containers will hold enough soil for a cyclamen corm, or a few muscari, snowdrop or crocus bulbs. These dainty spring beauties cannot easily be forced. Once potted, keep them outside in a sheltered spot and bring indoors when they are on the point of flowering.

An indoor environment is challenging for spring bulbs, but they'll stoically cope, so long as they're kept away from direct heat sources. After flowering, take them outside and feed with a general-purpose fertiliser. When the foliage has died down, they can be planted out into a border, where they will continue to provide colour for years to come. ☺

“With forward planning, you can have a succession of bulbs from December – April”



Adopt South
Finding Forever Families



Adoption is easier than you think

You could be a family next year

- Single or a couple • LGBT+ • Already a family • Disabled
- Receiving benefits • Renting or own your home

Welcome to Adopt South

Right now, we have toddlers, siblings and children with complex needs who need a family of their own to be loved and cherished.

Talk to our friendly team about starting your adoption journey today.

0300 3000 011 • adoptsouth.org.uk



The Regional Adoption Agency for Hampshire, Isle of Wight, Portsmouth and Southampton Local Authorities



**Would you like an honest,
reliable and **AFFORDABLE**
police checked*
cleaner to clean your home?**

Typically

£13.50 per hour inc.

Then contact us at



TIME FOR YOU™

DOMESTIC CLEANING

As Featured on BBC 2's Working Lunch, Ch4's 'House Swap' & preferred cleaning supplier to CH5's Cowboy Builders!

Telephone:

01983 623 123

iow@timeforyou.co.uk

www.timeforyou.co.uk/iow

*police checked cleaner upon request



Beacon
MAGAZINE

CONTACT US

CALL US
01983 522123

VISIT US
iwbeacon.com

FACEBOOK
[iwbeacon](https://www.facebook.com/iwbeacon)

INSTAGRAM
[@beaconiow](https://www.instagram.com/iwbeaconiow)

TWITTER
[@iwbeaconmag](https://twitter.com/iwbeaconmag)

EMAIL
hello@iwbeacon.com

Island Repointing



Natural Stone & Brick

Masonry Waterproofing & Brick Replacement

Damp Proof Course Installation & Cavity Clearance

Vacuum Grinding

Islandwide Coverage

Tel: 01983 531461 or 07715 397896

Mark Carter

Oil and Gas Engineer

Worcester Bosch Accredited Installer
Serving the West Wight and Cowes area

Tel: 619111 Mobile: 07771 557769



Gas Safe

Registered 28450

Oftec Oil

Registered C12814



- Boilers Installed, Serviced & Repaired ✓
- Heating system repairs and upgrades ✓
- Landlord Gas Certificates issued ✓
- Agas & Rayburn Serviced ✓
- Swimming Pool Boiler Services ✓
- Fires, Cookers, Hobs & Ranges installed ✓
- Power Flushes and system Cleanses ✓
- Pre purchase House Inspection ✓
- If it uses gas we can fix or replace it ✓
- Natural Gas & LPG & oil ✓

THE ISLAND'S FAVOURITE...
**isle of
wight
radio**



**'Topping in
the Morning'**

with Paul, Jamie
and Hayley
every weekday
from 6am

FM107 & 102

For the latest
breaking
Island news
iwradio.co.uk

FACEBOOK
[isleofwightradio](https://www.facebook.com/isleofwightradio)

TWITTER
[@iwightradio](https://twitter.com/iwightradio)

INSTAGRAM
[@iwightradio](https://www.instagram.com/iwightradio)

The Island's **Favourites**

WIGHTIME CLOCK REPAIRS

Andrew S. Cooke - Horologist

Set-Up Service and Free Collection & Delivery Service

Tel: (01983) 752418 Mob: 07734 822348

Email: wightime@aol.co.uk www.wightime.com

*F.R Frise Jewellers, Kimberley House, High Street,
FRESHWATER, Isle of Wight, PO40 9JX*

STUDIOPHASE

Freeview

freesat

sky cai

The Isle of Wight's local TV experts
Call 404406 studiophase.com

Why choose us?

- CAI approved • Friendly, reliable engineers
- We have over 30 years of local knowledge

**JOSH KERLEY
TREE SERVICES**

- ✓ All aspects of tree work undertaken
- ✓ NPTC Qualified and fully insured

FREE NO OBLIGATION QUOTES

TEL: 07875021682

Email: info@joshkerleytreeservices.co.uk
www.joshkerleytreeservices.co.uk

**ACER
RECLAMATION**

WANTED: Red & Yellow Bricks,
Floorboards, Flagstone, Welsh Slate,
Chimney Pots & Stained Glass.

Call: 01983 565761
or 07973 745428
www.acerreclaimed.co.uk

**YOUNG
PLUMBING**

PLUMBING & HEATING SERVICES

Tel: 01983 339671

Mb: 07967 225030

www.YoungPlumbing.co.uk

STAG LANE MOTORS

Stag Lane, Newport
522443 / 525783

Special Offer MOT £39

(Class 4 cars & motorhomes only)

**SERVICING & REPAIRS TO
ALL VEHICLES (inc. HGV)**

**24 hr Breakdown
& Recovery**



Motorbikes MOT £25



INTRODUCTION
OFFER
10%
OFF BANNERS
QUOTE RAVEN10



WIDE FORMAT
BANNERS
POSTERS
CANVAS PRINTS
DIGITAL WALLPAPER
VINYL STICKERS



DIGITAL PRINTING
LEAFLETS
BUSINESS CARDS
NCR
BOOKLETS
STATIONERY

www.ravenprint.co.uk
studio@ravenprint.co.uk
01983 529044



FRONTROW
GROUNDWORKS
ISLANDWIDE

Fully insured
28 yrs experience
Reliable!

Fencing

Removed - Repaired - Replaced
All types of fencing undertaken
Quality materials used • **FREE** quotes



Call Andy 07817 979501
or 01983 863348
frgworks@icloud.com

PLUS Landscaping • Turfing • Driveways • Pathways • Decking
• Drainage • Tree & Hedge maintenance & removals
• Footings • Garden walls • Guttering

for those jobs **outdoors**



MAKITA • JANSEN • KUBOTA • NILFISK • HAYTER • TORO • CUB CADET AND MANY MORE



*Expert advice
No better price*



STUBBINGS BROS
meeting your machinery needs

call us on **551443**
Chale Green, IW • jobsoutdoors.co.uk



Lighting the way.

The all-new TUCSON Hybrid has landed.

On to better.

At Hyundai we know that progress only comes when you do things differently. The unique Parametric Jewelled Lights of the all-new TUCSON mean that it doesn't look like any other SUV. And with its innovative hybrid technology and advanced SmartSense safety features, we're lighting the way in more ways than one.

Discover more at hyundai.co.uk #lightingtheway

Leslies Hyundai
College Close, Sandown PO36 8EB
01983 405565 | <https://dealer.hyundai.co.uk/wight-motors-isle-of-wight>



Fuel Consumption figures for the TUCSON Hybrid. Mpg (l/100km): Combined 39.8 (7.1) to 50.4 (5.6). CO₂ emissions: 160 - 127 g/km. Figures shown are for comparison purposes only compared to other vehicles and CO₂ figures with other accessories to be arranged and provided. These figures are verified and do not vary, which will depend upon a number of factors including the accessories fitted (post registration), variations in weather, driving styles and vehicle load. Hyundai 5 year warranty subject to Terms and Conditions.



MILLENNIUM WINDOWS LTD

UPVC Doors & Windows, Conservatories and Fascias
& Gutter Installations on the Isle of Wight.

CALL US ON **01983 810 888**

millenniumwindowsiow.co.uk facebook.com/millwindows



Cherry Tree
shutters

Changing your view

**20%
SALE
NOW
ON!**

01983 640174

www.cherrytreeslutters.co.uk

Providing interior plantation shutters to cover any window style or colour including; Square, Rectangle, Circular, Arched, Bays and Patio Doors.



*Terms & Conditions Apply

Checkatrade.com

**0%
FINANCE
AVAILABLE**

WIN! Can you spot the differences?



COMPETITION



**PRIZE PREFERENCE
(CHOOSE ONE ONLY):**

1 ■ 2 ■ 3 ■ 4 ■

THIS MONTH'S PRIZES...

**SOUTHERN
VECTIS**
◀ the island's buses ▶



**24 hour travel pass
for up to 5 people**
Courtesy of islandbuses.info



£25 Voucher
Courtesy of Grace's Bakery
Tel: (01983) 632231
www.gracesbakery.uk



**Pair of Saturday
Shopper tickets**
Courtesy of Solent Cruises
Tel: (01983) 564602
www.solentcruises.co.uk



**Helly Hansen - Camo Oxford
Backpack 20L**
Worth £66.00
www.idmlworkwear.co.uk/

NAME:

TEL:

ADDRESS:

POSTCODE: **E-MAIL:**

- ☐ I am happy to be contacted by the sponsors for marketing purposes
☐ I would like to receive Beacon Magazine's weekly email newsletter with more competitions

Closing date - 31ST OCTOBER 2021

Send your entries to: **IW Beacon Competition, 8-10 Dodnor Park, Newport, Isle of Wight, PO30 5XE**
When sending your entry to us you **MUST** ensure that you use the correct postage. Terms and conditions available on request.
Prizes must be claimed within 30 days of the draw date. Previous winners can be found on our Facebook and Twitter pages.
Winners will be contacted by phone.

Did you know...

You can take a photo on your phone and email your entry to win@iwbeacon.com.





FAIRLEE SERVICE STATION



MOT

3500kg GW including
Hi-Tops, Long Wheel
Base, Tippers & Lutons

CARS
£335

£50
CLASS 7



Live Booking Visit:

fairleeservicestation.com


online service and MOT booking now available

Call:



01983 525410

service reception

 Fairlee Service Station | Fairlee Rd | Newport | Isle of Wight | PO30 2EJ