

EAST AND
SOUTH WIGHT

Beacon

Pick up your **FREE** copy

October 2021

HISTORY

**ST WILFRID'S CHURCH
CELEBRATES 150TH
ANNIVERSARY**

RECIPES

**PUMPKIN
GRANOLA
BARS**

**BEEF &
PUMPKIN
STEW**

WALK

**CROSSING
THE BAR**



**Ultrafast Speeds
at Unbeatable
Prices**



Where else on the Island can you
get 100mbps Upload AND
Download for only £22.95 or
300mbps Upload AND Download
for only £27.95 on a Fuss-free
30 Day monthly rolling contract?



Annual price increases in April each year apply. Reconnection fee applies if leaving and re-joining within 12 months. Simple as that. See [WightFibre.com/FussFree](https://www.wightfibre.com/FussFree) for details.

A Different Kind of Broadband Full-fibre • Ultrafast • Future-proof

wightfibre
because we care

Order online at [wightfibre.com](https://www.wightfibre.com)
or call 01983 240240



Isle of Wight
Pubs

What we offer...

-  New Menus
-  Open Fires
-  Sunday Roasts
-  Dog Friendly
-  Real Ales
-  Large Gardens
-  Fantastic Views

Please see website for
opening times

Sunday Roasts by the Fireside

As Autumn draws in nothing feels better than a hearty roast in a cosy Character Inn! Plus until the end of November we're offering **10% off food** at five of our landmark pubs!



10% OFF FOOD!

Monday to Friday
with this voucher*



THE
**CRAB &
LOBSTER**
BEMBRIDGE

Tel: 01983 872244



THE
BUGLE INN
YARMOUTH

Tel: 01983 760272



THE
SUN INN
HULVERSTONE

Tel: 01983 741124



THE
BUDDLE INN
PUB • DINING • SMUGGLERS

Tel: 01983 730243



THE
CAULKHEADS
SANDOWN

Tel: 01983 405080

use at...



Welcome from the EDITOR

Summer may be over, but awesome autumn is drawing in, bringing us nights under a blanket by the telly, roaring fires, cosy pub trips, crisp Isle of Wight walks and roast dinners!

October is the month of the Isle of Wight Walking Festival, with 100 great walks on your doorstep, just waiting to be discovered, including some brilliant family walks. I love the sound of the Unicorn Treasure Hunt at the Island Riding Centre, or the forest ramble with Rob Da Bank. There's more details on our website.

We're also bringing you details of a great new coastal walk, Crossing the Bar. A new project created by the New Carnival Company.

In this edition of Beacon, you'll find some great recipes to help use up the insides of those Halloween pumpkins, advice on planting winter bulbs to brighten up your home, competitions, days out, local news, history and much more.

Amy Shephard

Editor amy.shephard@iwbeacon.com



13

18

- 5 Win a Holiday to Barbados
- 6 Recipe: Pumpkin Seed Granola Bars
- 7 Recipe: Hearty Beef & Pumpkin Stew
- 9 Coastal Walks: Crossing the Bar
- 10-11 The Entertainment Guide
- 13 History: St Wilfrid's Church Turns 150
- 15 John Hannam Meets Neil Sedaka
- 18-19 Island Talent
- 20-25 News from your area
- 31-32 Gardens: Brilliant Bulbs
- 35 Spot the Spooky Difference Competition



31

Beacon
MAGAZINE

IW Beacon Media Centre, 8-10 Dodnor Park, Newport, PO30 5XE

CALL US
01983 433112

FACEBOOK
iwbeacon

TWITTER
@iwbeaconmag

VISIT US
iwbeacon.com

INSTAGRAM
@beaconiow

EMAIL
hello@iwbeacon.com

totalsensemedia



Sandham Gardens

Sandown Bay

Please find our prices online at
Sandhamgardens.com

OVER 55,
BRAND NEW
EXTRA CARE
SHARED
OWNERSHIP
APARTMENTS

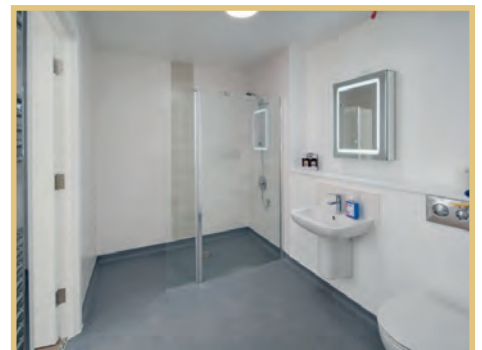


SHOW APARTMENT NOW AVAILABLE TO VIEW

All residents can be supported by the Wellbeing Team who are there to help everyone feel settled, supported and safe; this unique Wellbeing service can respond to your needs 24hrs a day on an unplanned care basis, enabling you to live independently in your own home.

To feel part of a community, there is access to activities every day such as:

- **Minibus outings**
- **Scheme shop**
- **Hairdressers**
- **Activities & Lunch Club**
- **Reception desk 7 days a week**
- **Communal lounge**
- **Laundry room**
- **Fitness room**
- **Dining room**



All apartments are built and equipped with emergency pull cord which connects you to 24 hours a day staff on site who can respond in a serious emergency for your peace of mind.

WIN WITH ISLE OF WIGHT RADIO



ISLE OF WIGHT RADIO, BRING ME TO *Barbados*

Imagine relaxing in complete luxury on the stunning Caribbean island of Barbados.



Now the travel industry is starting to open back up we've got a treat in store for you. Isle of Wight Radio has teamed up with Barbados Tourism Inc. to bring one lucky winner and their guest for a week-long luxury holiday on the beautiful Caribbean Island of Barbados.

Flying with British Airways, the winner and their guest will check in to Saint Philip's breathtaking Crane Resort. Isle of Wight Radio will look after you every step of the way, making sure you enjoy a truly memorable luxury holiday. Whether your ideal holiday is one filled with swimming, sunbathing, culture, cuisine or entertainment, Barbados has it all.

Understandably you're a little nervous about travelling at the moment, so Paul and Jamie are heading over to Barbados to check

out all the amazing facilities, and report back on all the measures being put into place to ensure your safety. Barbados has had very low rates of COVID on the Island and on the UK's Green List, but don't worry if you're not happy hopping on a plane just yet, you have a full 12 months to redeem this holiday of a lifetime.

A Barbadian legend since 1887, and the oldest operating hotel in the Caribbean, the historic Crane Resort has surveyed the famous pink sands and turquoise waters of Crane Beach from its dramatic cliff-top perch for over a century. From grand colonial styles suited featuring lavish gardens, private pools and rooftop terraces, to an impressive array of world-class amenities and services including fitness facilities, spectacular cascading pools, exciting restaurants including the Zagrat rated Zen, The Crane offers an idyllic respite on the South Coast of Barbados.

All you need to remember is
one phrase...

"BRING ME TO BARBADOS!"

If Paul, Hayley and Jamie call you after 8am on Friday 8th of October YOU could be jetting off to Barbados! BUT you MUST answer the phone with the phrase "Bring me to Barbados"! If you answer with 'Hello' or anything other than "Bring me to Barbados" you will have lost your chance to win and Isle of Wight Radio will have to call someone else.

Register at iwradio.co.uk and make sure you have your phone on you at 8am on Friday 8th of October!

Terms and conditions apply.

In association with Barbados Tourism Inc.

BARBADOS





MAKES
8-10
BARS

PUMPKIN SEED & SUPERFOOD Granola Bars

This recipe by Adele Trathan makes an ideal grab-and-go granola bar for those times when you are rushing out the door and you need a healthy snack. They are packed with protein, fibre, and a heart-healthy mixture of pumpkin and sunflower seeds

INGREDIENTS

125g (4.5oz) roasted
unsalted almonds
65g (2.25oz) pumpkin
seeds
65g (2.25oz) sunflower
seeds
35g (1oz) unsweetened
coconut flakes
¼ tsp salt
1 tsp cinnamon
1 tsp vanilla extract
3 tbsp clear runny honey
1 tbsp melted coconut oil

METHOD

1 Chop the whole almonds into smaller pieces and mix in a medium-sized bowl with the pumpkin and sunflower seeds, coconut flakes, salt and cinnamon and give it a good stir.

2 Then add in the wet ingredients, vanilla extract, honey and melted coconut oil. Gently stir the mixture until the nuts and seeds are fully coated with the wet ingredients. Preheat the oven to 180C (350F, Gas 4).

3 Line an 8" x 8" baking tray with lightly oiled baking paper, spoon in the mixture and use a flat spatula to firmly press the

mixture into an even layer. You may need to spray or rub the spatula with a small amount of oil to help to stop it sticking to the mixture.

4 Put into the oven and bake for 35-40 minutes or until golden. Once cooked remove from the oven and place the tray on a cooling rack, use your spatula again to press down the mixture.

5 Allow to cool completely before lifting the mixture and baking paper from the tray and place onto a chopping board, then cut into evenly sized bars with a sharp knife. Store in an airtight container in the fridge for a quick and healthy snack. Great food for when you are on the go! ☺



SERVES

4

HEARTY BEEF & PUMPKIN STEW

This is the perfect, homely dinner to look forward to as the autumn nights draw in. Adele Trathan explains how to make this delicious casserole that is baked and served straight from the pumpkin

INGREDIENTS

4 small sugar pumpkins
(approximately melon sized)
500g (18oz) beef stewing
steak, cut into 2.5cm
(1 inch) cubes
3 tbsp vegetable oil
200ml (7fl oz) water
2 large potatoes, peeled
and cubed
2 carrots, sliced
2 celery stalks, sliced
1 green pepper, chopped
2 cloves garlic, finely
chopped
1 onion, chopped
1 (400g) tin chopped tomatoes
1 tbsp beef stock granules
Salt and ground black
pepper

METHOD

1 Heat 1 tablespoon of the oil in a large
saucepan over a medium to high heat.
Place the beef in the saucepan and cook
until evenly brown. Mix in the water,
potatoes, carrots, green pepper, celery,
garlic, and onion. Season well with salt
and pepper. Bring to the boil, then reduce
the heat to a simmer and cover with a
tight-fitting lid for approximately 2 hours.

2 Dissolve the beef stock granules
into the beef mixture and stir in the
tomatoes.

3 Preheat oven to 170C/350F/
gas mark 3.

4 Cut the stalked top off each of the
pumpkins in a circular shape to

make a lid for later, once the pumpkins
are baked. Scoop out all the seeds,
leaving just the flesh. Place the pumpkins
in heavy baking tins. Fill each pumpkin
with the beef stew, to within an inch
(2.5cm) of the top, which allows space for
the pumpkin juices to seep into the stew.
Brush the outside of each pumpkin with
the remaining oil.

5 Wet each of the pumpkin stalks then
wrap the stalk with tin foil to prevent
burning when cooking. Replace the
pumpkin lids back on each respective
pumpkin then bake in the preheated oven
for 1 to 1½ hours or until tender.

6 Serve the pumpkins with some
rustic bread for a rustic, tasty and
hearty meal. 🍴

MILL COURT BUSINESS CENTRE

*Our starter office has an
annual cost of £3,200*

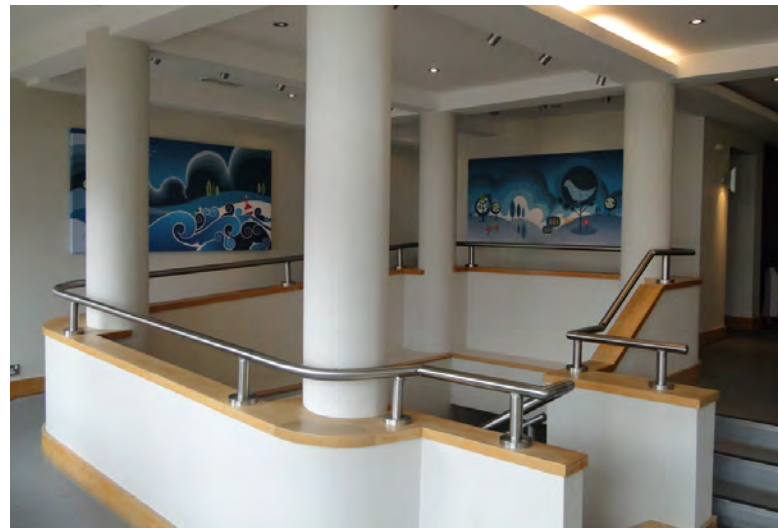
*Range of offices
available are from 120
sq ft to 1,100 sq ft*

Office Space in the Heart of the Island

Mill Court Business Centre, Newport, offers a wide range of office space and business leasing at the heart of the Isle of Wight.

Mill Court provides modern office lettings within a unique 19th century mill building, which through a constant programme of refurbishment and new build provides practical, efficient office space for companies requiring an attractive working environment.

Mill Court Business Centre lies on the edge of Newport Town Centre, and is convenient for all Island transport links.



For further information please:

Email info@millcourtbusinesscentre.co.uk

Call Chris Manhire on **07866 730979**

Visit our website www.millcourtbusinesscentre.com



Crossing the Bar Project – three days of Inspired Walking with the New Carnival Company – part of the IW Walking Festival 2021.

The New Carnival Company (NCC) has created an original programme of 13 short and longer walks celebrating the Island’s coastal footpath, as part of three-year arts and walking project linked to the opening of the new National Trail - The England Coast Path – and a designated national ‘Year of the Coast’ festival planned for 2023.

The new England Coast Path, approximately 3000 miles long, will be the world’s longest continuous coastal trail and there are planned events and celebrations in towns and villages all along the route during the festival.

The Isle of Wight, boasting one of the most beautiful and varied of coastlines to be found anywhere in the country, is naturally a highlight of the new National Trail. We want to showcase and share what beautiful beaches, cliffs and estuaries, wildlife, heritage, and culture we enjoy, with people of all ages and abilities, residents and visitors alike.

These inspired walks bring together local artists, schoolchildren and communities, the IW Area of Outstanding Natural Beauty (AONB) and the IW Ramblers, in an innovative participatory programme to highlight special places along the route.

In each of six selected locations – Wootton, Bembridge, Niton, Brighstone,

Totland and along the Medina estuary, people are invited to join in for guided walks that connect to a site which has been interpreted by local people in a unique and creative way. Community Art installations and short performances will engage walkers at the crossover point of the short and longer walks in each location.

Crossing the Bar is inspired by Tennyson’s famous poem of the same name, written whilst travelling across the Solent to his home in Freshwater. The poem contemplates his future, life after. The New Carnival

Company has used this theme to start conversations about the future of our world as we emerge from the pandemic, and by exploring the changing relationship with our environment in the face of climate change.

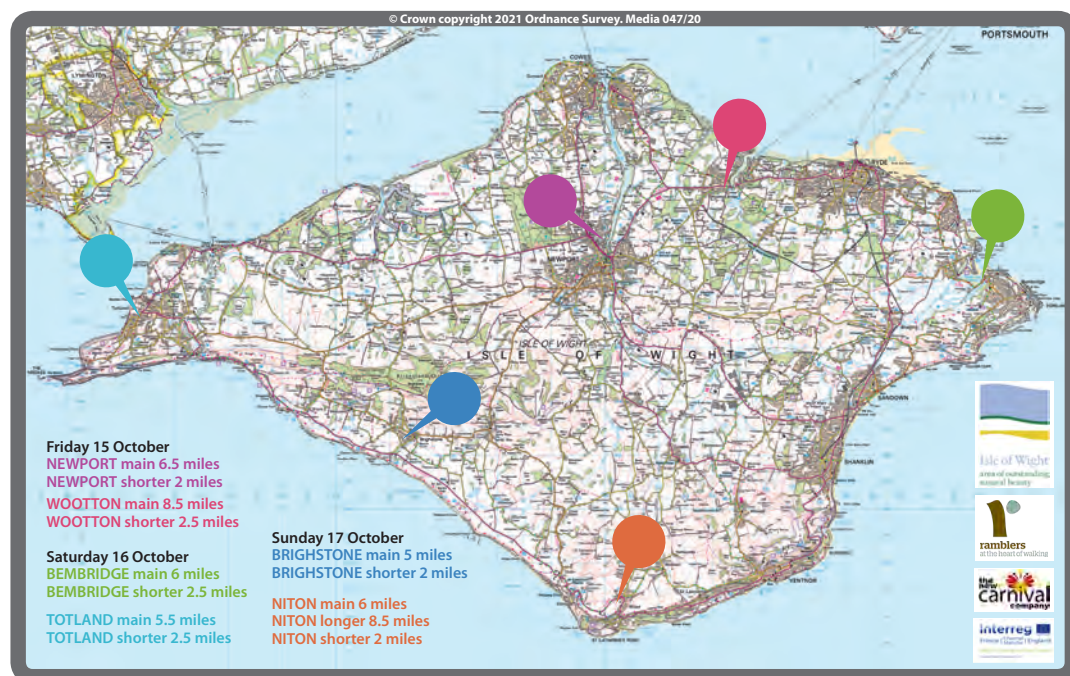
Dozens of volunteers have helped out in planning and leading the walks, each of which takes in a part of the proposed new coastal trail. Schoolchildren and their families have been making beautiful flags to bring along to the shorter walks and adult workshops in community settings are creating some of the imaginative responses to be

seen and heard along the way.

All the walks are all free to enjoy. The longer walks are number-restricted and pre-booking is required.

The New Carnival Company will be publishing the walking routes after the festival for all to enjoy at any time. They plan to double the number of sites for creative interventions next year, and in 2023 to lead and animate walks around the whole coastline for Year of the Coast celebrations.

See isleofwightwalkingfestival.co.uk for this year’s Crossing the Bar walks programme and booking information. 





WIN A FAMILY TICKET TO WIZARD WEEK AT THE RAILWAY

Get ready for a spooktacular time at Isle of Wight Steam Railway this October half term, as witches, wizards and other ghouls take over Havenstreet.

With the witching season close at hand, the railway's getting transformed into a magical, spooky world between the 25th and 29th October.

It wouldn't be Halloween without a little magic so enjoy a real life magician conjuring up a few tricks. Meet the friendly witches of Havenstreet, become a spooky apprentice and help with some magic spells.

Watch the skies as the birds of prey from Haven Falconry swoop and dive. What's more halloween-y than an owl... owl-ween if you will? The railway's spooky team will also be in

the station yard telling terrible tales and mesmerising you with amazing illusions.

Plus, take the terrifying treasure hunt trail and explore the grounds before boarding the steam train, where a crafty witch will be dealing out treats (maybe a few tricks), then settle back for a journey through 'haunted' woodland.

We're giving away a family day pass (two adults and two children) to enjoy this exciting experience between the 25th and 29th October.

To be in with a chance to win, head over to the Hidden Island section of our website, telling us what your favourite Halloween film is, and why! **The competition closes on Friday 15th October.**



Cherry Godfrey

SAVE THE DATE

OPENING PARTY

9TH OCTOBER FROM 11-2PM

32 HIGH STREET, NEWPORT, ISLE OF WIGHT, PO30 1SR

COMPLIMENTARY REFRESHMENTS ♦ GIVEAWAYS ♦ FACEPAINTER ♦ FAMILY FRIENDLY

EVERYONE WELCOME

To celebrate the launch of its new Isle of Wight office, Cherry Godfrey is hosting an opening party. There will be refreshments, cupcakes, a facepainter and more.

There will be plenty of giveaways to enjoy as well as the chance for one lucky person to win an Isle of Wight gift card worth £100!



SPOOKY FARM FUN

Wanda the Witch is back with some new friends this Halloween half term.

From the 16th - 31st October, join Wanda and her team of Scatty Scarecrows in the Magical Pumpkin Patch and pick your very own Pumpkin straight from the stalk! These magical pumpkins are growing very fast and are in all sorts of sizes and colours, which one will you pick?

Then it's time to meet Rosella the Friendly Fortune Teller — Conjuring special tarot card readings for kids and their parents.. what excitement and wonder does your future hold!?

Finally, there will also be a 'Pimp my Pumpkin' carving cabin* where you can carve or decorate your

pumpkins with stickers galore — Don't worry, we will clean up the mess! Scarecrows love pumpkin slop.

Don't forget this is an all-weather event, so bring your wellies for the field and don't forget your coats.

Pumpkins will be on sale online very soon, and there will also be pumpkins to purchase on the day.

Farm admission must be booked in addition.

www.tapnellfarm.com/events

*adult supervision required for Pumpkin carving.

Pumpkin Patch is a chargeable event, in addition to the Farm Park admission.



Join us and find a wide selection of items and unique gifts from some of the Islands BEST Artists and Crafters!



Ryde Masonic Lodge

John St, Ryde, PO33 2PZ

Saturday 23rd October - 10am to 4pm

The Entertainment GUIDE

Visit iwbeacon.com to see our full events guide

GO YELLOW WITH MOUNTBATTEN



Let's Go Yellow together so we can ensure that no one dies alone.

Go Yellow is for everyone — friends, family, work or community groups. You can get creative as you like!

- Wear yellow for the day (your pets could join in too)
- Host a charity collection box
- Only eat yellow food
- Host a Big Yellow Tea Party.

Every penny you fundraise will support Mountbatten to make sure patients and their families have access to skilled, compassionate, and sensitive care in a place of their choice.

This can include providing specialist end-of-life care to patients with life-limiting illness in their home or in our inpatient unit and day centre. We also support patients families, friends and carers through their illness and bereavement. As an independent charity, every donation makes a real impact to local people.

Find out more at mountbatten.org.uk



1ST
OCTOBER

TAPNELL
FARM PARK



16TH-31ST
OCTOBER

PARANORMAL INVESTIGATIONS

HALLOWEEN AWAKENING

If you are fascinated by ghosts and the supernatural world, join one of two special Halloween week events at Northwood House in Cowes, the Island's most haunted venue.

On 26th & 27th October you can join a real paranormal investigation searching for

signs of the spirit world followed by two nights of "Ghost Stories and Legends" on 28th & 29th October with local author Tim Wander. It's going to be "spooktacular"!

Details at
www.northwoodhouse.org
Exclusive tickets only £22.00 per person. Over 16s only.

HALLOWEEN WEEK EVENTS AT



26TH-29TH
OCTOBER



NORTHWOOD
HOUSE & PARK

WWW.NORTHWOODHOUSE.ORG

BE A STAR

AND SIGN UP FOR THE STARLIT TRAIL

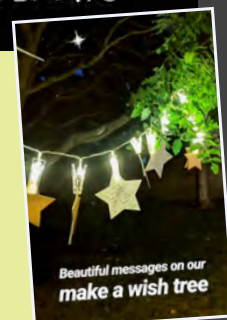
See the Isle of Wight in a different light at Wessex Cancer Trust's new illuminated fundraising walk, Starlit Trail.

Featuring stunning scenery, sparkling illuminations and spectacular live entertainment at every turn, the Isle of Wight's first Starlit Trail takes place at Ventnor Botanic Garden on the evening of Friday, October 15th.

15TH
OCTOBER

On the night, participants will also have the opportunity to leave a message pegged to the Starlit wishing line.

For a donation, walkers will receive a star to write their own wish or message to be lit up on the charity's dedicated memory tree. **To find out more and book your place, go to** wessexcancer.org.uk/event/starlit-trail



GRUESOME GRACE'S

Order our handmade terrifying treats to be delivered to your door this Halloween!



Free Island-Wide Delivery with all orders over £8

 www.gracesbakery.uk/shop
01983 566868

Victoria Antiques Shanklin

FREE Valuations on coins, banknotes, medals, also silver & gold items such as boxes, jewellery & pocket watches. We will make you an offer on all of the above if you wish.



We can pay you by cash, BACS, Paypal or cheque.

Find us at 50A Regent St, Shanklin
PO37 7AE. Tel: 01983863632
www.victoria-antiques.com
(open Monday to Friday 10am - 4pm- no weekends)

PLEASE CONTACT US TO MAKE AN APT OUTSIDE OPENING HOURS

Island Carnival Memories
brought to you by the New Carnival Company



Rob (right) with Jim 'Skimbo' White, who led the band for 50 years.

SPOTLIGHT ON VENTNOR COMIC JAZZ BAND

Contribution from Bob Trowbridge

Bob Trowbridge joined the iconic Ventnor Comic Jazz Band in the early 1970s. Although he was born into a 'carnival' family, he had never really played an instrument before — but that wasn't a requirement of the Jazz Band!

"The rules of Ventnor Comic Jazz Band. There are three rules. The first one is you're not allowed to drink. The second one is you're not allowed to practise, and the third rule is ignore rule 1 and 2. OK? It's quite simple. If you can't follow those rules you don't get in."

He now confesses to being able to play the trumpet 'badly'... "It's all by ear" he says.

Bob's great uncle dressed up as a Brigand in 1898: "It started as a Mop Brigade and most of the members then, goes back to 1894... were members of the Isle of Wight Rifles, and they dressed up in weird costumes and carried mops instead of rifles...do mock military drills and entertain the crowd. And in 1911 it suddenly morphed into a musical band, with inverted commas round the musical bit!"

"They played weird tunes with weird instruments, so it could be kazoos, home-made instruments... a horn off a gramophone attached to a



Bob, centre, aged 13 and his childhood friend Jill Holbrook playing Ann Boleyn in 1963. 'It was real fun, we entered every carnival on the Island that year, every kid's Procession, and we won every one' he recalls.

watering can or something like that, but in amongst it you would have a nucleus of people that could hold a tune and the others just used to make a noise as they went along. It's anarchy! You know, they would just sit down in the road in the middle of the procession, and...wander off into a pub and then rejoin. Yeah, it hasn't changed!"

A lot of the Jazz Band had painted faces, some wore masks and some weird and wonderful uniforms, as they do today.

"It's whatever you want really. We had a chap turn up in just a pair of 'y' fronts one year...We didn't say anything to him but... I mean some people turn up and we don't even know their names. We wondered if he'd been visiting somebody else's wife the night before and been discovered and had to leap out the window just in his 'y' fronts. We didn't like to ask!"

Bob is currently writing a booklet about the history of the band 'it's part of our heritage' he says.



The Ventnor Comic Jazz Band aka The Isle of Wight Camel Corps, at Ventnor Carnival 2006

Island Carnival Memories is an Oral History project, capturing people's stories of carnival in years gone by. If you would like to contribute your own memories, please go to our Facebook page Island Carnival Memories and share. We would love to hear from you! Island Carnival Memories is supported by the National Lottery Heritage Fund. www.thenewcarnivalcompany.com



St. Wilfrid's Church, Ventnor

150TH ANNIVERSARY

It was a dual celebration for Ventnor's Catholic community in early September as St. Wilfrid's Church celebrated its 150th anniversary and the adjacent St. Wilfrid's School celebrated its 125th anniversary.

Contributed by the Isle of Wight Catholic History Society

A new book, just published by the Island Catholic History Society, gives a detailed account of the struggle to find a site for a church and also the anti-Catholic sentiment, which existed in Victorian times, and the determination of some to keep both Catholic and Non Conformist churches out of the seaside town.

Ventnor's "bracing sea air" from the English Channel was considered to be therapeutic for the various illnesses that prevailed at the time. Hence, in addition to sick laypeople, it was also, mainly sick priests who were sent to Ventnor. Consequently, they did not have the energy or enthusiasm to build a church and develop a Catholic community. Initially, they were met with anti-Catholic sentiments, but this gradually gave way to a more pragmatic attitude among Ventnor's business community. They realised that Catholics would not come to Ventnor if their spiritual needs were not catered for. Hence, it was the shopkeepers and hoteliers themselves who would lose

out financially. Could they afford to turn away business, especially when an increasing number of wealthy European aristocracy (Empress Elisabeth of Austria for one) were coming to Ventnor.

After ten years of false starts and disappointments, opposition to a Catholic church in Ventnor began to decline and a site was purchased in Trinity Road on the periphery of the town and the Church of Our Lady and St. Wilfrid was opened in 1871. Surprisingly, it was (and still is) the only Isle of Wight church, dedicated to St. Wilfrid, Patron of the Island, who came to evangelise the inhabitants in A.D. 686.

Twenty five years after the opening of the church, St. Wilfrid's Catholic Primary school was built on the same site.

The church doubled its capacity with the extension of a side aisle in 1958, when there were three Masses on Sundays. These were packed in Summer months with holidaymakers.

Sadly, the church burnt down in December, 2006, due to an electrical fault. Virtually everything was destroyed,



The old St. Wilfrid's Church

The church doubled its capacity with the extension of a side aisle in 1958, when there were three Masses on Sundays.

including the beautiful Victorian stained glass windows. Holy Trinity C.E. Church, just across the road from St. Wilfrid's, very kindly provided a venue for Mass for the first year. After which, the old school hall was used, until the present replacement church was erected eight years later on the adjacent site. This church is smaller than the original, but it is appropriate today for the smaller congregation.

St. Wilfrid's is now a part of the South Wight parish,

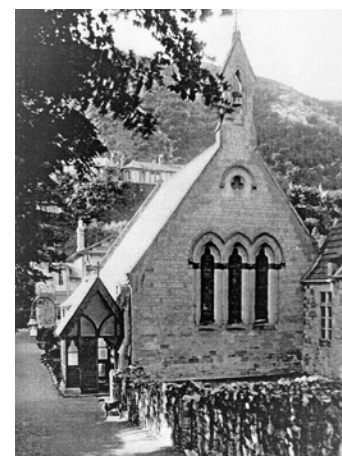
together with Sacred Heart, Shanklin and St. Patrick's, Sandown.

The history book, with a foreword by Bishop Philip Egan of Portsmouth, records not only the history of St. Wilfrid's, but also, the valuable contribution made by three religious Orders that were once in Ventnor parish; namely, the Benedictine nuns (before they moved to St. Cecilia's Abbey in Ryde in 1922); the Sisters of the Sacred Heart at Bonchurch and the Benedictine monks at Appuldurcombe (before they moved to Quarr Abbey in 1908).

The book is available from the Island Catholic History Society at £2-50 (£5-00 with post & packaging). 01983 566740 or email iow-chs@outlook.com. ☺



The present St. Wilfrid's Church



**WEEKENDS ONLY
THROUGHOUT OCTOBER
(Weather depending)**

Departs Thetis Wharf, Cowes (next to the Chain Ferry) at **0930 hours** to Gunwharf Quays, Portsmouth. Returning at approximately **1700 hours** from Gunwharf Quays back to Thetis Wharf, Cowes. (Please listen out for announcements for exact time). **Adults £9 / OAPs £8 / Children £7.** Price does not include admission to attractions

Booking is essential before travelling.

Call us on 01983 564602



**Sailings are subject to any COVID restrictions in place at the time.
FACE MASKS are advised when inside the boat**

Go Yellow

with



Mountbatten

Join in on 1st October 2021
Whatever you wear, eat, do...
...make it yellow.

Find out more at
mountbatten.org.uk

Share:   



Media partner:

THE ISLAND'S FAVOURITE...
isleofwightradio



Adoption is easier than you think

You could be a family next year

- Single or a couple • LGBT+ • Already a family • Disabled
- Receiving benefits • Renting or own your home

Welcome to Adopt South

Right now, we have toddlers, siblings and children with complex needs who need a family of their own to be loved and cherished.

Talk to our friendly team about starting
your adoption journey today.

0300 3000 011 • adoptsouth.org.uk



The Regional Adoption Agency for Hampshire, Isle of Wight,
Portsmouth and Southampton Local Authorities

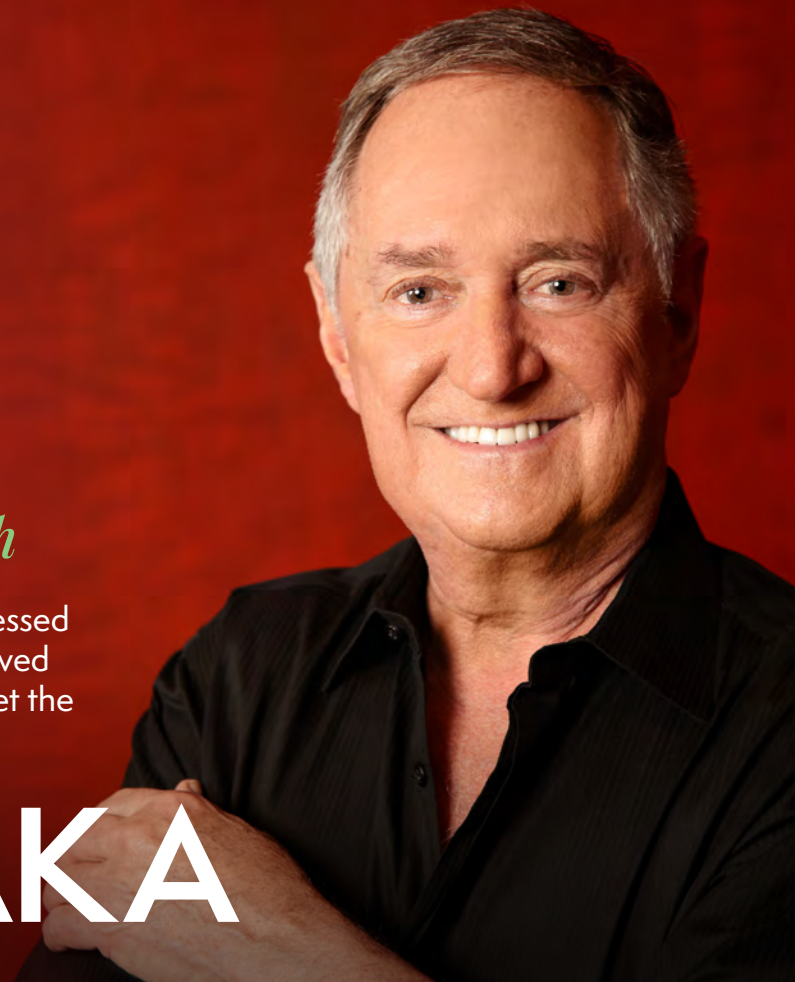




A day to remember with

When I bought Neil Sedaka's vinyl 78s, pressed on black shellac, I could never have believed that one day a shy Island kid would even get the chance to meet him.

NEIL SEDAKA



By John Hannam

I grew up in East Cowes being fascinated by the original American rock 'n' stars. We rarely saw them, other than photos and features in the musical press. If we were lucky we might catch them in a cheaply made movie or a glimpse of their appearances on the world famous shows of Ed Sullivan and Perry Como.

The opportunity to meet him was to come in 2010. Philip Norman, a good friend of mine, was writing a musical with Neil called *Laughter In The Rain*. He told me to contact a London PR lady but she never got back. Perhaps I was considered small fry.

A few weeks later Philip rang to ask how the interview had gone and I had to tell him the bad news. He told me Neil was coming back for a private visit and he would personally fix it up. I was offered 15 minutes. In my *Oliver Twist* moment I asked for more. Back came the message from Neil's wife in America to say wait until the day. I headed for the

Dorchester Hotel for our 10am interview. I went up overnight and borrowed Craig Douglas' Dolphin Square apartment.

A porter carried all my equipment up to Neil's gorgeous suite. He welcomed me and said: "John it's great to meet you and we're going to have some coffee to get to know each other. I've put an hour aside for our radio interview."

I quickly wanted to find out about his early hits like *Diary, Oh Carol, Calendar Girl, Breaking Up Is Hard To Do* and *Happy Birthday Sweet 16*, many of which were written in New York's famous Brill Building, where they manufactured songs. It was also fascinating how Sedaka, a superbly trained classical pianist, could end writing songs like *I Go Ape* and *Stupid Cupid*, the latter a number one for Connie Francis.

He first came to England in 1961 to star on TV's *Sunday Night At The London Palladium*. By the end of 1962 he'd sold 25 million records and was second to Elvis Presley.

Neil has had some amazing highs and lows in his life. Like many American solo singers he eventually suffered from the group boom. His career took a dive

and work began to dry up and record companies were suddenly not interested.

"I was writing hits for other people but you do worry that you will never have your own hits again. People were asking me if I used to be Neil Sedaka," said Neil.

Ironically, it was the British group 10cc who put him back on the success path and, untimely, a bigger star than ever before.

He moved to Britain to record at their Strawberry Studios in Stockport. There he recorded several vinyl albums on his comeback trail. He was amazed to discover I had them all.

British hits came from those sessions and in particular from an album called *The Tra-La Days Are Over*.

Elton John, a long time fan, liked what he heard and recorded a new American album with him called *Laughter In The Rain*, on his Rocket Records. That led to an amazing string of new world hits, one of which was picked up by Tony Christie and thanks to Amarillo and Peter Kay it became a national anthem in Britain. Solitaire has been recorded by Neil and so many other artists. He was perfect for the burgeoning singer/songwriter era.

His one man show has packed houses out all over the world, including London's Albert Hall and Hyde Park.

There's even been a musical called *Laughter In The Rain* written by him and Philip Norman. I was so impressed and saw it twice within five days. There were quite a few dark secrets revealed. ☺

I was so surprised to get that part. I was only 20 and it was my first movie



FUEL BOX

BECOME A STOCKIST TODAY!
IDEAL FOR RURAL AND LOCAL SHOPS
THE REVOLUTIONARY BAG-IN-BOX FUELLING SYSTEM

Join over 1800 stockists nationwide and you will receive **FREE**:

- ◆ Storage bund tray
- ◆ Display boxes
- ◆ Leaflets
- ◆ Posters
- ◆ Branded pens



fuelbox.co.uk

store pour recycle

Contact your local supplier, Solent Fuels
 01983 654321 for more information



ST HELENS SERVICE STATION

ALL MAKES SERVICE & DIAGNOSTICS

Factory level diagnostics & services for BMW, Volvo, Peugeot, Citroen and Renault
 Genuine parts supplied for Jaguar, Land Rover and Porsche



VOLKSWAGEN • PEUGEOT • RENAULT • CITROEN • BMW • MERCEDES



**MOTs AVAILABLE FOR ALL
 MAKES & MODELS**

Embankment Road, Bembridge PO35 5NS. Tel. 01983 872332 or 07920 224181



ZEN SPA

BEAUTY SPA TREATMENTS SUN BEDS WELLBEING YOGA

Now under new ownership, Zen Spa is the perfect place to pamper yourself and take some time out for your wellbeing.

Zen Spa is a newly refurbished, friendly and welcoming salon based in the heart of Newport with a professional and calming atmosphere. They want to make sure their clients feel relaxed and at ease whilst receiving five star treatments.

Zen Spa is all about making clients wellbeing the centre of everything they do. They know the right treatment can make you look — and feel — like a million dollars.

They are committed to only using top-of-the-line quality products for added luxury.

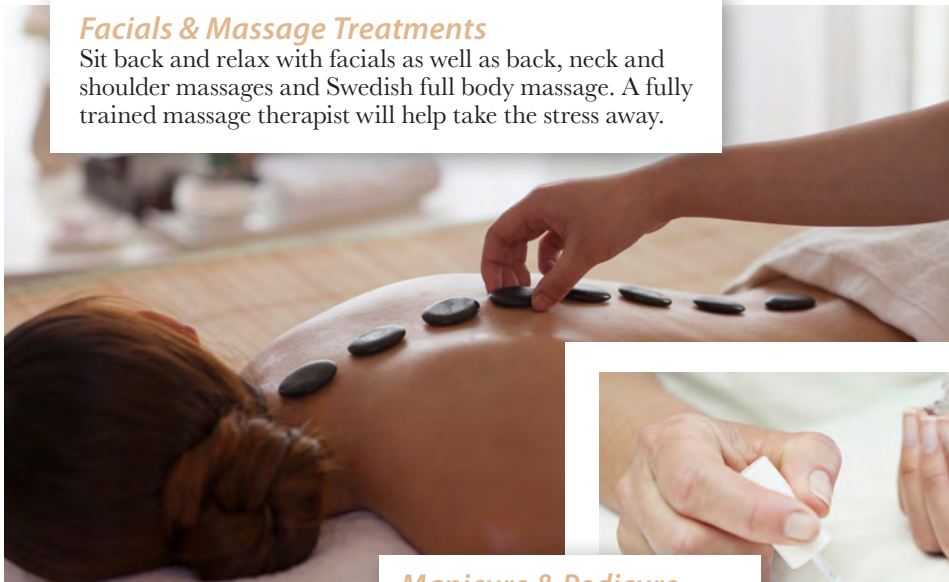
It's time to unwind with Zen Spa's

wide range of treatments including mud facials, deluxe full body massage, deluxe full body scrub and deluxe gel polish manicure and pedicure, there is a treatment for everyone.



Facials & Massage Treatments

Sit back and relax with facials as well as back, neck and shoulder massages and Swedish full body massage. A fully trained massage therapist will help take the stress away.



Manicure & Pedicure

Zen Spa's manicure and pedicure service ranges from standard and gel polish to deluxe as well as a full set of gel nail extensions and infills.



3D Lipo

3D lipo is a revolution in localised fat reduction, treatment of cellulite and skin tightening without the need to exercise.



Lash and Brow Treatments

Brow and lash tint, lash infills and extensions as well as lash lift, brow lamination and billion dollar brows.



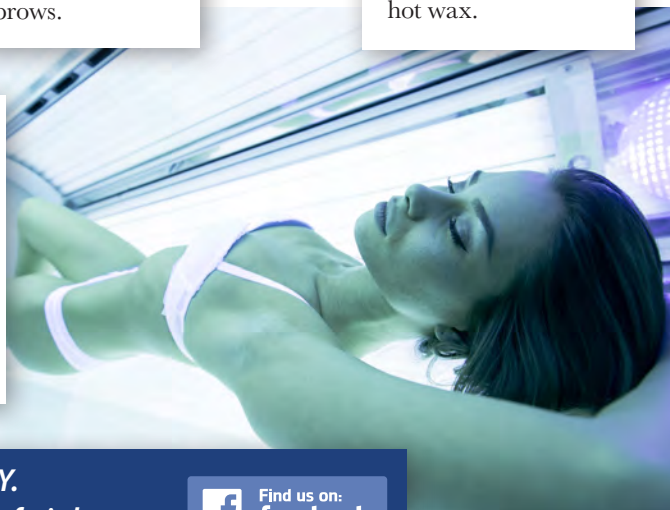
Waxing

Zen Spa provide both strip wax and expert hot wax.



Sun Beds

Enjoy a beautiful tan with the stand in sunbeds. You don't need an appointment just come in! They offer minutes and courses.



29B St James' St, Newport PO30 1HY.

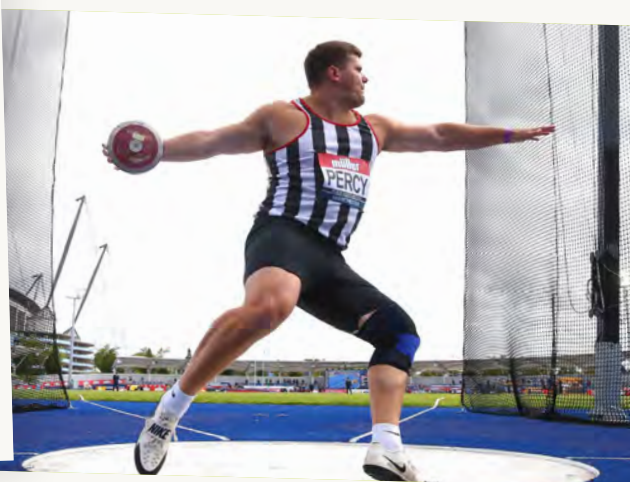
Tel: 01983 524581 www.zenspaisleofwight.com



ISLAND TALENT

Arts and sports groups, charities and members of the Isle of Wight Council Talented Athlete scheme will have their Wightlink sponsorship extended until the end of 2021 because of the continuing impact of the Covid-19 pandemic.





Despite restrictions easing, not all events and sporting fixtures have returned to normal. That means some groups and individuals have not had the opportunity to use Wightlink's travel sponsorship scheme.

"We are very proud of our Wightlink in the Community initiative which supports more than 50 charities, arts and sporting groups and around 80 talented and gifted individuals," says Wightlink Chief Executive Keith Greenfield. "We recognise 2021 has been another challenging year and want to extend our sponsorship until the end of the year when, hopefully, there will be more opportunities for people to travel."

One of the many sporting groups to benefit from the sponsorship scheme is Ryde Rowing Club. Chairman Steve Bull says: "We are very grateful to have our sponsorship extended, it is of great benefit to the club in these difficult times. With a minibus and 30-foot boat trailer to take to the mainland for competitions, Wightlink's support is invaluable."

Applications for future sponsorship will now open at the beginning of October each year, with successful applications confirmed in December and sponsorship beginning on 1 January. Wightlink has worked closely with the Isle of Wight Council to align the Talented

Application process with the new dates.

Alec Broome, sports development manager at the Council, says: "Wightlink has been a long-standing supporter of our Talented Athlete scheme. It is

It is designed to assist the Island's most gifted sportspeople to progress in their chosen sports

designed to assist the Island's most gifted sportspeople to progress in their chosen sports. We are very grateful for the discounted ferry travel Wightlink provides as many of them need to travel regularly off the Island for training and events. We are pleased that this year's sponsorship has been extended and look forward to re-opening our Talented Athlete scheme for applications in October." ^③





News from Ryde

by Cllr Charles Chapman

What a pleasant time the beginning of September was. It's always quite remarkable that our kids go back to school and the sun comes out!

As many of you are aware I have the distinction of being the Ryde President of the Royal British Legion and last month I put out a plea for helpers and volunteers. At several emergency meetings we conceded that volunteering, although commendable and essential, is never the less something that people just don't have the time for, when working to support a family. People during the lockdown had, many for the first time in their adult life, free time. Without such dedication during the pandemic, many people would have starved and/or been left in extreme difficulties both physically and mentally. Nevertheless, we need to replace the traditional route of volunteering with something more structured.

We are lucky on the Island that a small number of larger organisations give a member of staff dedicated time to volunteering. This is rare but could lead to blue print for future involvement of employers in the community. Working employees given time to assist by volunteering in the community has many benefits for both employer and employee. We all benefit for greater cooperation and investment into the

local community.

Ryde is about to undergo serious changes, both in its architecture and status. It's important that decisions made now do not destroy Ryde's uniqueness. Ryde and Island residents must actively be aware of the decisions being made on their behalf. Your support at our meetings, your letters/emails are welcomed and read and despite some opinions, are needed as councillors, are to put forward your wishes.

Purchasing the Old Town Hall, despite the objections of the officers etc, is a brave decision to bring an iconic building back into public use. It also means that such decisions, made with your support, ensures that Ryde maintains its identity. Local people felt strongly about their old town hall and that gives elected members the courage to take risks.

Lastly, and a little mundane perhaps, is that we are working hard to remove the weeds on the pavements. We are using non chemical methods which means that the weeds are being removed manually. Time and labour consumption. If you can help by removing weeds outside your house, please feel free to do so.

☎ 07867626733

✉ charles.chapman@iow.gov.uk

Pop Up Post Office Returns to Wootton Bridge

By Iona Stewart-Richardson

Islanders who live in Wootton will no longer have to go to East Cowes, Pan or Binstead to access a post office - thanks to a new pop up one.

The service is after months of collaborative work between Wootton Bridge Parish Council and Community Action Isle of Wight.

The pop-up post office is situated in the former Brannons Tea Room adjacent to the Parish Council office.

It can handle all services except for passports.

It will initially operate for three hours a week, Wednesday mornings 9.30am to 12.30pm.

Chairman of the Parish Council Cllr Daryll Pitcher



said: "I am pleased that post office counter services have returned to Wootton Bridge. The loss of our post office was a huge blow to the community and a hot topic during the May elections. Back then I promised to get services back and I am proud to say that working in partnership we have been able to do it. I would like to thank Community Action Isle of Wight for their support."

Ryde Inshore Rescue Recruits

By Iona Stewart-Richardson

Ryde Inshore Rescue is looking for enthusiastic volunteers to join its team.

Boat crew, shore crew, helping out in the shop, boat launchers, fundraisers and headquarters staff are some of the opportunities on offer.

Martin Osborne, Secretary of Ryde Inshore Rescue, who has been involved in the organisation his whole life said: "We will accept anybody who wants to fulfil a role in community service volunteering, if you want to do that and make a difference, certainly to help save lives at sea, we want you...We will welcome you with open arms."

Ryde Inshore Rescue also provides training for its members, some of which include VHS licences, boat training and tractor driving.

In 1956 Martin's late father and two friends started up Ryde Voluntary Life Corps which provided lifeguarding services along Ryde seafront. It has since grown to become what it is today, Ryde Inshore Rescue.

Asked what Martin loves most about working with Ryde Inshore Rescue, he said: "Without sounding emotional, if we save one life — we make a difference and that's all that counts. We all just muck in and have a good laugh, it

really is fun just doing what we do and the best part of it — the icing on the cake is that we really do feel like we have made a difference."

The watch is on Sunday between 10am and 2pm.

Monday nights is crew training.









The South's largest supplier of
Helly Hansen workwear branded
to your business needs.

idmlworkwear.co.uk

Old Pals Recreate Railway Walk



On 10th September 1966 a group of local youngsters walked along the recently closed railway line from Shanklin to Ventnor, including through the 1,312 yard tunnel under St. Boniface Down, to commemorate the date on which the line had opened exactly one-hundred years before.

This was repeated on the same date in 1967 and 1968, but sadly discontinued as by the following year the tunnel had been blocked off. Earlier this summer some of that group were reunited at Havenstreet Station for the launch of a book of railway memories, written by one of its members, Derek Gawn.

It therefore seemed incredibly appropriate to recreate the Shanklin to Ventnor walk on Friday 10th September, after a gap of 53 years. Eight of the 'old pals', along with two associates, met up at Shanklin Station at noon and soon set off, albeit at a more sedate pace than when they last did it in 1968, for Wroxall.

Derek Gawn, who had organised the reunion with help from local man, Graham Wheeler, said "I simply could not resist the idea of getting everybody back together again to recreate the walk. It is also a perfect tribute to members of the original walkers who are sadly no longer with us".

On reaching the northern portal of the tunnel at Wroxall, the party were met by a representative from Southern Water, who had kindly agreed to allow access a short distance into the tunnel. None of the participants had been inside for over half a century and were amazed how little the condition

seemed to have deteriorated in that time.

The more energetic members then walked over the Downs to Ventnor, whilst the slightly less able bodied enjoyed a trip to the site of Ventnor Station in a 1934 Dennis Ace bus, very kindly supplied by its owner in conjunction with the Island's Bus and Coach Museum.

An important ingredient of the walks in the sixties was a cream tea in Ailsa Craig's Tea Gardens, which was situated in Southgrove Road, a short distance from Ventnor Station. This had been run by the late Gwen Newnam, until she finally closed the business in around 1977, since which time the building has changed hands and become a private residence, albeit with the old tea garden's lawn still surviving.

However, through the generosity of the present owner, Sharon Wheeler, the tea gardens were recreated for just one hour only, for the 'old pals' to be able to relive their past, 53 years after they last did. A delicious cream tea was served, with even Wendy Beavis – daughter of the tea garden's former owner – along with a neighbour from its tea gardens era – acting as waitresses.

The 'old pals' then reboarded the vintage bus, which had itself seen regular use on the Ventnor Town Service in its past life, linking the Station with the Town Hall and Seafront. This route was re-enacted, it almost certainly being the first time that it had negotiated Ventnor's steep and winding Cascade since its working days, before it finally returned the party to Shanklin Station for 6pm.



News from Lake South

by Cllr Paul Brading



SKREW BRIDGE WORKS: Skew Bridge has been reinspected following recent bad weather and has resulted in additional drainage holes being put in. The railway crossing at the end of Cemetery Road into Lake Cliff Gardens is also now fully reinstated and back in use. There was a slight delay in this reopening caused by a delay in the supply of the special fencing needed to finish the job. All we need now is for the testing of the trains to be completed before train service can recommence, which should hopefully in October.

COPSE MEAD: The IW Council continues to discuss with Gift2Nature the transfer of Copse Mead to their existing portfolio of sites. In the meantime, the IW Council is carrying out routine maintenance on the site with grass and hedge cutting. Once the transfer is completed I would like to see a proper plan drawn up for the future development of the area, and communicate this to residents.

SHANKLIN CEMETERY: I have had several calls recently about vandalism at the cemetery, with gravestones being pulled over. Cllr Whittaker and I regularly visit the site, and it is very sad to see what has happened there. I have reported it to the relevant authorities, and we hope this practise now stops. The police are aware and now more regularly patrol the area.

I have also discussed the state of Cemetery Road with its many potholes, and I am pleased to report that prices are being obtained by the IW Council to repair the damaged road.

PARISH COUNCIL ISSUES: The Tesco junction at the end of the Fairway has long been a major concern of mine, and I am sure many of you too. I cannot understand how this layout was allowed when Tesco opened. There are too many minor accidents and near misses to pedestrians that something must be done as this whole area must be dangerous. I am fully aware that a total rebuild of the junction is not practical, but there are many simple things that can be done to address safety issues. I have now arranged a site meeting to discuss options and ideas, with Island Roads, Council Officers and fellow Councillors.

As Chair of the Parish Council, I have also now instigated a full and proper review of the three toilet blocks that we are responsible for, New Road, Lake Cliff Gardens and the Revetment. A set of costed proposals will come forward for discussion, which will lead to a comprehensive public consultation before any decisions are made.

☎ 07719174690

✉ paul.brading@iow.gov.uk

Ncl clinic
ISLE OF WIGHT

COVID-19 PCR Testing on The Isle of Wight

Same Day Antigen Fit-to-Fly £99



Reliable and efficient service on The Isle of Wight.

TESTS AVAILABLE 7 DAYS A WEEK

Our Services

- ✓ Fit-to-Fly from £99
- ✓ Test-to-Release from £149
- ✓ Return to the UK £40
- ✓ Antibody tests from £60
- ✓ Day 2 & 8 tests from £189

Why choose us

- ✓ Multiple processing times
- ✓ Pre-booked time
- ✓ Same day available
- ✓ UKAS accredited laboratory

T: 0330 025 2028

www.ncliniaciow.co.uk

62 Crocker Street, Newport, Isle of Wight, PO30 5DA



News from Ryde North West

by Cllr Phil Jordan

Finally, after many years, work is due to start on the Ashley Road junction in the first week of October. The entire project is programmed to take six months. The first month will be spent carefully clearing away vegetation to allow the junction to be realigned and to create greatly improved visibility splays and then there will then be an estimated two months in which four utility companies – water, gas, electric and telecommunications – will diver their services. The creation of the new junction is expected to take a further three months.

The clearance of vegetation is a necessarily painstaking operation. Though the vegetation itself is deemed to be low-value habitat, we are keen to ensure the work does not adversely affect any wildlife. Local wildlife experts from Arc Consulting will remain on site throughout the clearance to advise and supervise as required. Though this is clearly the right thing to do in the interests of local ecology, it will mean the clearance may be a slow process.

The scheme is funded by a grant

from Government under the Local Transport Plan.

Ryde harbour, along with Eastern Gardens, is still on course for transfer to Ryde Town Council in March 2022 and there is scheduled dredging of three 500 cubic metres of sand from the harbour by the IWC to assist with entry and exit issues experienced earlier this year. The 1500 cubic metre removal of sand is the maximum allowed under emergency powers, but Ryde Town Council have built into their five year business plan a capital dredge in year one of ownership alongside improvements to the pontoons and facilities to improve the overall harbour experience over the five-year period. In all, Ryde Town Council plan to invest around £300,000 in total which will be covered by harbour incomes from annual moorings and visitors alike. A new facility is planned for harbour offices and for toilets and showers subject to planning consents and that will be embarked upon once the harbour is transferred to Ryde Town Council.

phil.jordan@iow.gov.uk

Farmer Launches Service to Improve Animal Welfare

By Iona Stewart-Richardson

An Isle of Wight farmer is launching a revolutionary service that will not only save the farming industry millions of pounds a year but also improve animal welfare.

Livestock Lookout aims to keep livestock safe and has been developed by Tim Rogers who was inspired by his own first-hand experience.

Tim, of 250-acre Palmers Farm at Wootton (which is nestled in the shadow of Queen Victoria's former home at Osborne House), came up with an idea whereby you can simply text a central number that then privately alerts the farmer, so they can respond accordingly.

The Isle of Wight National Farming Union is also backing the scheme, which has been trialled successfully on the Island and is now being rolled out nationally.

Tim said he has had a good

response from local farmers: "We trialled it here with well-known farmers and they have found they have been able to whittle out any false incidents and they have been able to respond quickly and efficiently to genuine incidents on their land.

"The farmer remains anonymous because we have a central number now where the walkers can text 'help' and then each board next to the farmer's field has a location number and the walkers are asked to enter that location number too.

"They then text back and ask what the issue is... It could be a rural crime too which is an increasing problem at the moment, the texts will go through to the farmer to give him as much information as possible. If it is an emergency he will get a call from the intelligent technology, telling him there is an incident on his land."

Another benefit of the project is it provides



a quick response to dog attacks, which the NFU Mutual estimates cost farmers around £1.3m in 2020.

Livestock Lookout can also help tackle other problems including: Escaped cattle, livestock theft, damage caused by straying animals and issues with gates and fencing.

With more people spending more time in the countryside as a result of changing habits in a post-Covid world, Tim believes his new service is becoming available at just the right time.

Tim added: "Increased use of the countryside presents both a challenge and an opportunity. It is a challenge because some people will not be familiar with the countryside code, but also an opportunity as they also present a useful and plentiful source of eyes and ears for the farmer."

The Livestock Lookout concept works by giving farmers 24/7 year-round support to keep an eye on their land and livestock through highly visible signage and intelligent technology.

Tim explained how it all started when a cow escaped from one of his fields: "The first we knew of it was via a post my wife Danielle came across on Facebook. By then it had become quite a serious incident. The cow had knocked someone over – thankfully they were not hurt too badly – and had damaged a car.

"After that, we put up a sign giving our contact number in case there were any future problems. But all that did was generate unwanted phone calls from people wanting to use our land for anything from metal detecting and camping to motocross.

"It was clear we needed a more effective early warning system that also kept our own personal details anonymous – and that is exactly what Livestock Lookout does."

"With our Hands & Hearts, We Care"

RECRUITING NOW FOR CARERS

- BLOCK CALLS
- COMPETITIVE RATES
- GREAT WORK LIFE BALANCE

HIGH QUALITY CARE AND SUPPORT IN YOUR HOME WITH...

- DOMESTIC CARE
- SUPPORT WITH MEAL TIMES
- PERSONAL CARE
- BESPOKE PACKAGES

CH TRAINING

CH - TRAINING OFFERS A WIDE RANGE OF ACCREDITED COURSES FOR...

- SCHOOLS
- HOLIDAY PARKS
- CARE SECTOR
- ALL INDUSTRIES

THE ISLANDS LOCAL TRUSTED TRAINING PROVIDER

www.careathomeiow.com/ch-training.html

Innovation Centre, St Cross Business Park
Newport, Isle of Wight PO30 5WB
Tel: 01983 216400
Email: info@careathomeiow.co.uk
Website: www.careathomeiow.com

Ladies Realm to Close Ryde and Sandown Shops

By Jamie White

Isle of Wight high street shop, Ladies Realm, has announced it will be closing its stores in Ryde and Sandown.

The shops have been a fixture in the towns for more than 60 years, with some staff members having worked there for more than 30 years. But now, the company said the time has come to shut for good.

Ladies Realm Ryde will close on October 30. Ladies Realm Sandown will close on November 6.

In a statement, the company said: "It is with much regret that we must inform you of the permanent closure of our Ladies Realm shops in Ryde and Sandown by the end of the year.

"We would like to thank our loyal customers for supporting our shops over the last 60 years, through good times and hard.

"Our thanks and appreciation must also be voiced for the members of staff that have worked in our six shops,

many who stayed over 20 years (and a few over 30 years!)"

Ryde Business Association said: "We've had so many new businesses open over the last 18 months, it was inevitable that we'd be saying goodbye to one sooner or later.

"Sadly, Ladies Realm will be closing its doors for the last time on October 30.

"Thanks to all the LR team for their dedication to retail over the decades.

"We wish them all the very best for the future.

"Be sure to pop in to make your final purchases with them."

Gift vouchers and outstanding credit notes must be used to purchase goods before closing on October 30. Loyalty points can be used in payment until 4pm on Saturday October 30.



Isle of Wight Top in Country for Buried Treasure

By Iona Stewart-Richardson

The Isle of Wight is one of the top places in the country where you can discover buried treasure.

That's according to statistics from the Digital, Culture, Media and Sport Treasure and

portable antiquities statistics collection.

Since 2012, the total number of finds on the Island per 100,000 people is 129.3.

From 2012 to 2021 there were 184 discoveries made on the Isle of Wight, with some items dating back to before the Bronze Age.

According to a report by jewellerybox there were 30 discoveries made on the Island alone in 2013 — making it the best year yet.

Norfolk has been rated the second-best place to find buried treasure followed by Dorset which came in third.



News from Shanklin South & Central

by Cllr Chris Quirk & Cllr Michael Beston

SHANKLIN PERFORMING ARTS CENTRE UPDATE:

Refurbishment work at the former Shanklin Library, now the Performing Arts Centre, continues at pace. The following work has now been completed: Full Structural Survey - Electrical testing - Recommended electrical issues addressed - Electrical distribution updated - Low energy LED replacement lights installed - Security System updated - Fire safety checks completed - Energy efficiency certificate issued - Wall and hedge damage repaired - New practicing sprung flooring quotes and Ballet Barre received - New outside signage, including new telephone number and website address has now been completed and affixed to the exterior walls. The intention of acquiring this building by the theatre trustees is the need to expand professional shows at the theatre, but also the need for community use.

ISLAND ROADS UPDATE:

Island Roads (IR) are continuing their programme of footway improvement works around the Island working closely with the IW Council to accommodate works in advance, where possible, by WightFibre with their roll out of superfast fibre broadband across the Island. IR is also aware that there has been some weed growth in pavement areas across the Island. This is to a large extent due to the unseasonable weather we have been having which has provided the perfect climate for vegetation growth, but also due to the changes to the frequency and new method of weed management. IR continues to work to tackle weed growth within the agreed service schedules using the new hand weeding and organic herbicide. This will be kept under review with IW Council officers.

AMERICA WOODS PATHWAY UPGRADE:

In a joint scheme between the IW Council Rights Of Way, IW Ramblers Association and the IW Bridleways Group, the pathway improvement scheme at America Woods has recently been completed. Anyone familiar with the area will be aware that in the



autumn and winter months, there have been certain sections which have been impassable due to water drainage issues. In this joint scheme these issues have now been resolved by creating higher level gravelled paths including rain runoff gullies.

VACCINATIONS & KEEPING SAFE FROM COVID-19:

There are some things we can all do to help stop the transmission of COVID-19. The regular use of free rapid response LFT test kits is important in order to prevent spreading the virus to loved ones without knowing. One in three people with COVID do not have symptoms. Test kits are available from your local pharmacy or you can order online here: www.maps.test-and-trace.nhs.uk

If you think you might have COVID-19 symptoms, however mild, please self-isolate and get a PCR test. What else can we do to keep safe? Simple things matter, keep washing your hands throughout the day, using hand sanitiser. Please consider wearing a face covering in crowded spaces or on public transport and stay socially distanced. These are simple things to do and can really help.

Everyone age 16 and over is eligible for a COVID-19 vaccination. You can call 119 or online via the NHS vaccination website. Walk-in appointments for first and second doses for all ages are available. Availability is updated on the Hampshire-Southampton and Isle of Wight CCG NHS website. Please encourage your friends, family and colleagues to get vaccinated.

☎ 07802 705831
✉ chris.quirk@iow.gov.uk
☎ 07885 644426
✉ michael.beston@iow.gov.uk

Coastal Mobility

THE ISLANDS PREMIER MOBILITY SPECIALISTS

Also Wheelchairs • Bath lifts • Walkers • Adjustable beds & chairs • Accessories

FREE ISLANDWIDE DELIVERY

Great deals on mobility scooters and lift and recline chairs

SHANKLIN 866431
56 Regent Street

NEWPORT 533500
9 St Thomas Square



Ventnor Town Council

1 Salisbury Gardens, Dudley Road, Ventnor PO38 1EJ.

📞 01983 857840 ✉️ townclerk@ventnortowncouncil.org.uk 🌐 www.ventnortowncouncil.org.uk

CELEBRATING VENTNOR

Hundreds of residents joined the celebration of the town's remarkable location and community life on Saturday afternoon in Ventnor's Park for Ventnor Day 2021. In an amazing show of nearly 100 stalls, set up and staffed in all areas by volunteers and minglings and meetings everywhere with stunning entertainment from an afternoon-long programme of musicians

NEW WORKING GROUPS

Councillors have set up three more Working Groups to add to the already well established Community Development and Assets & Services Working Groups. The new Sustainability & Biodiversity Working Group is meeting on the last Wednesday of each month; the New Web Site Working Group has also met twice and will report to the October Town Council Meeting. The 31 Bus Working Group is now exploring alternatives to the existing service.

SUMMER BUSKERS

The summer programme of Buskers at Spring Hill Garden from 11am – 1pm each Saturday

with a range of local performers has been much appreciated by both residents and visitors and very obviously enjoyed by the musicians!

ESPLANADE MURAL

The old Gaiety site on the Esplanade has been hidden by corrugated metal sheets while development proposals are being progressed. Thanks to the artist nationally known as Stevie based in Brighton but native to the Island and with strong Ventnor connections has transformed the shield into a lively beach scene, making lots of friends in the process.

GREEN ROOM SERVICES

As restrictions lift, our Green Room's community spaces are returning to their usual level of activity by local groups and advice services. Current weekly users are the Anxiety Café, a Yoga Class, NHS Nutrition and the Mosaic Group. The spaces are used on a monthly basis by Veterans' Outreach, Mountbatten Hospice, RCS Employability, Ventnor Artists Collective, Alzheimer's Café and Citizens Advice offer sessions by appointment.

STAFF CHANGES

We now have two new members of our staff team. Nigel Slater-Bishop is now our Business Development Officer and based in our Green Room's Community Office. Morgan Williams who joined us on a one-year apprenticeship in 2016 has moved into a new career path and we will be joined from 1 November by Newport resident Rachel Redfearn as our new Administrator.

CLERK'S COLUMN

Our Clerk's Column is circulated every Monday to almost 500 residents who have joined the email list known as our Residents' Forum. It's a weekly one-A4-page summary of the Town Council's activities and decisions and is open to anyone to join by email to david@residentsforum.org.uk. It also appears as page 4 of each week's South Wight Chronicle.

MORE INFORMATION

The Town Council's website, with contact details for Town Councillors and staff, is at www.ventnortowncouncil.org.uk; our Twitter account is: @ventnorclerk.



Shanklin Town Council

Town Clerk RFO: Ms S. Janeway LL.B (Hons) CilCA MSLCC, 65 Landguard Road Shanklin Isle of Wight PO37 7JX

📞 01983 865101 ✉️ shanklintowncouncil@hotmail.com 🌐 www.shanklintowncouncil.co.uk



Town Mayor's address

Councillor Chris Quirk, Shanklin Town Mayor

The last couple of months have seen a relaxation in Covid-19 restrictions which has been welcomed by most with a return to something much closer to pre-Covid life.

One important aspect of the relaxation in Shanklin is the re-opening of Shanklin Theatre. I was at the last performance of the Christmas pantomime before the theatre was required to close, and over the last few weeks I have attended three different musical performances staged by Islanders including the first performance after re-opening.

The first was the professional presentation of "Beyond the West End" by Spotlight, a regular part of the theatre's programme with a completely new show each year. If you have not seen this year's show you really should, it is a delightful and extremely well presented performance.

The second was the performance of "Fame" by teenaged players of the Curtain Call – a remarkably professional show put on by Island youngsters. The third show was "We Will Rock You" again presented by young members of the theatre group Savoyards following only one week of intense rehearsals during their Summer Theatre Workshop; however the short preparation time in no way detracted from the professionalism of the show which we have come to expect from the Savoyards! Well done to all involved!

On a different tack I had the privilege to open the new premises of Shanklin Men in Sheds in the grounds of the YMCA at Winchester House. The new building supplements their existing workshop facility and provides an excellent area for a wider range of social and educational activities. If you are a man at a loose end, lonely, or just wanting to meet new friends and having a positive impact on our community why not go

along, I'm sure you will be made welcome.

Over the summer we have seen a return of visitors, much to the relief of our tourism related businesses I'm sure. To support the

If the town as a tourism destination we have had our decorative street lights renewed, and our usual planing scheme of planters and baskets, and if you have not been there recently take a look at the flower beds in Rylestone Gardens.

Previously I have commented on the Big Mead pond by St Blasius; the pond is silted up and the chalk stream supplying it is not currently flowing through the pond. The Isle of Wight Council is getting quotes for dredging the pond, and the diversion of the stream is under investigation. A harmless blue dye is being added to the water to reduce algal overgrowth.

**Best Regards Chris.
Shanklin Town Mayor (2021)**



Ryde Town Council

Town Hall Chambers, 10 Lind Street, Ryde, PO33 2NQ Tel: 01983 811105
Email: clerk@rydetowncouncil.gov.uk www.rydetowncouncil.gov.uk



Isle of Wight Day: A weekend of celebrations, remembrance, and thanks

There were many celebrations across the Island from 11-12 September and in Ryde we honoured many of the individuals who put themselves forward to volunteer so they could protect and care for their community. There were also many organisations nominated that went above and beyond in a time of need.

Ryde Town Council give a special thanks on behalf of the Ryde Community to;

Tidal Family Support
Haylands Farm
Phoenix Project
22 Argyll Street
Oakvale Foodshare
Haylands Primary School
The Foyer
Hovertravel
Ryde Fire Station
Ryde Academy
St John's Church
Waterside Community Trust
Wight Wave Beach Sports
Jo Johnson
Phil Plant
Chris Jones
Lynn Ashby
Dave Bull
Anne Cooney
Dominic Allen
Liz Christopher
Mario Agrotis
Julie Croydon

James Canning
Bill Croydon
Julie Brookes
Sandra Morris
Pam Hogg
Lyn Blackledge
Deborah McKenna

The Mayor, Cllr Michael Lilley said:
"11 September was IW Day and an Island thank you day to all those Island residents and organisations that during Covid helped others. Whether this was picking up a prescription, doing a week's shopping or cooking a hot meal, it was life saving for the neighbours and residents that had Covid or were self-isolating. Many Ryde residents volunteered to help others and those working in crucial services - shop workers, carers, nurses, schoolteachers, waste operatives - all went that extra mile for the community. We owe them a great debt of gratitude and I thank you all so much from the bottom of my heart. We honoured some of our local heroes and heroines but our thank you goes to every corner of the community we all love and without this kindness we would not have survived the cruelty of this pandemic."



Project: Opera A Ploughman's Tale



A story of an everyman who fought in the trenches, told through songs by composers or with words by poets who lived through the

time of The Great War.

Saturday 9 October, 7pm, at All Saints Church, Queen's Road, Ryde. Tickets may be purchased online via www.ticketsource.co.uk/project-opera. Cost of tickets: Standard £15, Concession £10, Child £5

Harp On The Wight International Festival

22-26 October

It is Harp on the Wight's seventh annual festival and as usual there are world class harpists performing concerts and teaching workshops. Full details can be found on www.harponwight.co.uk



Free Functional Skills Hub

Free adult literacy, numeracy, and functional skills sessions with Aspire. Learn what you need at your own speed and achieve a Level 2 distance learning qualification.
Tuesdays 1:45-3:45pm at A.R.C.H, Ryde High Street
Thursdays 10am-12pm at Aspire Ryde, Dover Street



Upcoming Council Meetings

Date	Meeting	Time	Venue
19 October 2021	Planning Committee	7pm	Please see the agenda on our website three working days before the meeting for venue details
9 November 2021	Planning Committee	7pm	Please see the agenda on our website three working days before the meeting for venue details

WHITE WINDOWS

THE ISLAND'S PREMIER DOUBLE GLAZING COMPANY



- W bring life back into your home with your very own, perfectly designed orangery or conservatory
- W enjoy the sunshine in summer and the warmth in winter
- W match your existing windows, doors and brickwork

CALL TODAY
01983 523552

whitewindows.co.uk - info@whitewindows.co.uk

Solent Pools & Hot Tubs

Whether it's a Swimming Pool, Hot Tub or Swim Spa, we'll have the answers

WE HAVE MOVED!

Due to demand we have moved to a brand new purpose built showroom on Unit 4 Lake Industrial Estate, off the Morrisons roundabout



Tel: 01983 401800
www.solentpoolsandhottubs.co.uk



FRONTROW
GROUNDWORKS
ISLANDWIDE

Fully insured
28 yrs experience
Reliable!

Fencing

Removed - Repaired - Replaced
All types of fencing undertaken
Quality materials used • FREE quotes



Call Andy 07817 979501
or 01983 863348
frgworks@icloud.com

PLUS Landscaping • Turfing • Driveways • Pathways • Decking
• Drainage • Tree & Hedge maintenance & removals
• Footings • Garden walls • Guttering

*"We don't just sell hearing aids,
we provide total hearing care"*

Wight Sound + Hearing

Registered Healthcare Professional
Colin Stockdale RHAD MSHAA AIHHP (Executive Member)

12 High Street, Shanklin PO37 6LB
Tel 01983 86 59 59

All Hearing Tests and Consultations are FREE

Latest Digital Testing & Fitting Equipment

Video Otoscope (see inside your own ear)

Try Before You Buy OR RENT a Digital Hearing Aid (from £1 A DAY)

Free Home Visits
EVERY Brand of Hearing Aid Available in the UK
Easy Payment Plans



Direct Cremation Specialists based here on the Isle of Wight for the Isle of Wight
The Island's only Independent Funeral Directors who are dedicated to this style of service
Affordable Direct Cremations. Separate the Cremation from the Celebration.

**Direct
cremations
from £1,495
Funeral Plans
from £1,750**

Golden Charter
Funeral Plans

Unlike mainland providers, we can take your loved one into our care day or night without the need for travelling over by ferry, involving delays, distress and additional costs to prices quoted.

We pride ourselves by offering great value for money without any compromise on the care given to you and your loved ones.

We are proud to be the longest service Island Independent Family Funeral Directors.

Call 01983 632598 info@isleofwightdirectcremation.co.uk
www.isleofwightdirectcremation.co.uk

What is direct cremation?

Quite simply, it is an alternative to a traditional funeral. The cremation takes place unattended, giving you the freedom to celebrate your loved one at a time, place and venue of your choice.

How much does a direct cremation cost?

We have 2 options to choose from:-

1. Our 'Island Way' is £1,695.00 - this is for the direct cremation at the Isle of Wight Crematorium
2. Our 'Wessex Way' is £1,495.00 this is for a direct cremation at a mainland crematorium

We offer this option for families who would like to take advantage of savings that mainland crematoriums offer.

Can I get help with the costs?

Yes, if you are in receipt of benefits you may be entitled to a payment of up to £1,000 from the Department of Work and Pensions, so we advise contacting them to enquire.

What is the difference between Isle of Wight Cremation and a mainland provider?

We are based here on the Island, we can take your loved one into our care promptly and without the distressing delay of travelling over on the ferries.

We can meet you face to face at our Island offices. Or make all arrangements over the telephone.

Whereas mainland providers often courier the ashes back, we provide a more personal service by hand delivering them to you at your home, or you can come in and collect them at either of our offices. We are locals and understand our local community.

Do you offer prepaid direct cremation funeral plans?

Yes, we do and we use Golden Charter, the UK's market leader for providing prepaid funeral plans to Independent Funeral Directors. Your funds are safe and placed into the Golden Charter Trust. Recently we were awarded by Golden Charter as the best funeral planner for 2020 in the Southern England Region.

VENTNOR MOBILITY CENTRE



Regain your independence... 

Agents for scooters, rise/recline chairs, stairlifts and all available mobility aids



FREE HOME SURVEY - We also Buy and Sell
- Can't come to us, we'll come to you!

Unit 4, Old Station Road, Off Mitchell Avenue,
Old Station / Tunnel, Ventnor PO38 1DX
Tel: 01983 855545

**PRE-BOOKED APPOINTMENTS ONLY
TO AVOID DISAPPOINTMENT**

Funeral Plans from William Hall Independent Funeral Directors

Planning ahead for peace of mind

A funeral plan provides peace of mind for you and those you care about. You make the arrangements in advance, specify your wishes and take care of the costs. We recommend funeral plans from Golden Charter, the UK's largest independent plan provider. With a Golden Charter plan you'll benefit from:

- Paying at today's prices for a service you may not require for many years
- A guarantee of nothing more to pay for our services
- A choice of a range of plans – with the option to personalise your own
- The reassurance that your wishes will be carried out, sparing your loved ones uncertainty and distress

Taking out a funeral plan is one of the most thoughtful decisions you could make.

To find out more about Golden Charter funeral plans from William Hall, please return the coupon below, phone us, or call in. REF: B 36

Mr/Mrs/Ms: _____ Initial: _____ Surname: _____

Address: _____

Tel no: _____

Send to: William Hall Independent Funeral Directors, Sunnybrow
Winford Road, Newchurch, Isle of Wight PO36 0JX

Tel. 01983 868688

FPA
FUNERAL
PLANNING
AUTHORITY
REGISTERED

Golden Charter
Funeral Plans 

£150 of M&S Vouchers

Awarded to every new Golden Charter Funeral Plan taken out between 1st October to the 31st October 2021 with William Hall Independent Funeral Directors, Sunnybrow, Winford Road, Newchurch PO36 0JX. www.williamhallfuneraldirectors.com

**Would you like an honest,
reliable and AFFORDABLE
police checked*
cleaner to clean your home?**

Typically
£13.50 per hour inc.

Then contact us at



TIME FOR YOU™
DOMESTIC CLEANING

As Featured on BBC 2's Working Lunch, Ch4's 'House Swap' & preferred cleaning supplier to CH5's Cowboy Builders!

Telephone:
01983 623 123

iow@timeforyou.co.uk
www.timeforyou.co.uk/iow

*police checked cleaner upon request



**Double glazing specialists
now offer finance**



 **Trinity Windows IOW**



For more information, call Gary and the team at Trinity Windows IOW without delay, on **07912 934 679**.
www.trinitywindowsiow.co.uk

We accept card payments



— | LEGAL & FINANCIAL | —

Lasting Powers of Attorney – Important at every age

An LPA can be a positive and effective legal tool, which ensures your wishes are respected should you ever lose capacity. This could be in older age or as a result of an accident or illness in your younger years.

Top tips on drafting a lasting power of attorney

Solicitors for the Elderly (SFE) is an independent, national organisation of over 1,500 lawyers, such as solicitors, barristers, and chartered legal executives, who provide specialist legal advice for older and vulnerable people, their families and carers.

Here are SFE's top tips to ensure your lasting power of attorney is effective, legally robust and safe:

Plan early – While you have capacity, it's vital that you get your affairs in order and choose the best people to manage your affairs, in case of an accident or illness. You can't appoint an attorney once you lose capacity.

Choose carefully – Think carefully who you want to appoint as your attorney and have an open conversation with them so they understand your wishes and what their responsibilities will include. Consider

A Lasting Power of Attorney (LPA) is a powerful legal document that allows a person to appoint trusted individuals to make important decisions about care and finances on their behalf, in the event of a loss of mental capacity through an accident or illness such as dementia.

appointing more than one person as your attorney so they can share the responsibility.

Consider appointing a professional

– A family member might not always be the best person to act as your attorney. Instead, you can appoint a professional such as a solicitor. They can act as a neutral third party and make unbiased decisions that are in your best interests. Bear in mind this usually involves a cost.

Think about different circumstances

– Consider how you would like your attorney to manage your property and financial affairs in different situations. For example, are you happy for your property to be sold to pay for your care costs?

Address the difficult questions

– Your attorney might have to make difficult decisions about your health and welfare.

If you have specific wishes around your care plans, medical treatment, or end of life wishes, make sure you discuss this with them and make your choices clear in your document.

Seek professional advice – Setting up LPAs without such input may be appropriate for those with straightforward financial situations or with considerable legal experience, but for most people, seeking professional legal advice is the best way of ensuring that an LPA is effective, legally robust and safe.

Keep your plans current – Make sure you keep your LPA updated if your circumstances change. Your choices around the people you want to be responsible for your finances and wellbeing may change, such as following a marriage or divorce, when children reach adulthood, or if parents pass away.





**MILLENNIUM
WINDOWS LTD**

**UPVC Doors & Windows, Conservatories and Fascias
& Gutter Installations on the Isle of Wight.**

CALL US ON 01983 810 888

millenniumwindowsiow.co.uk facebook.com/millwindows



OPPORTUNITY

IS AROUND THE CORNER

**LEAVE YOUR
BUSINESS IN SAFE
HANDS WITH
PERTEMPS**

**Here at Pertemps we have skilled candidates
ready and waiting to hear from you...**

We can fulfil your **recruitment needs** at short
notice, and send you the very best people to
help you in your hour/day/week of need.



INDUSTRIES WE RECRUIT IN:

- Bar Staff
- Warehouse Assistants
- Customer Service
- Waiting Staff
- Pickers & Packers
- Administrators
- Cleaners
- Engineers
- Accountants & Bookkeepers
- HGV Drivers
- Machine Operators
- Event Staff
- Van Drivers
- FLT Drivers



For all **Industrial and Driving** enquiries:

01983 533235

Joelee.Rowe@Pertemps.co.uk



For all **Office based, Technical and Event** enquiries:

01983 533235

Rhiannon.Morey@Pertemps.co.uk

www.pertemps.co.uk

Pertemps
the face of recruitment



Lighting the way.

The all-new TUCSON Hybrid
has landed.

On to better.

At Hyundai we know that progress only comes when you do things differently.
The unique Parametric, Jewelled Lights of the all-new TUCSON mean that it doesn't
look like any other SUV. And with its innovative hybrid technology and advanced
SmartSense safety features, we're lighting the way in more ways than one.

Discover more at hyundai.co.uk/lightingtheway

Leslies Hyundai
College Close, Sandown PO36 8EB
01983 405565 | <https://dealer.hyundai.co.uk/wight-motors-isle-of-wight>



Fuel Consumption Figures for the TUCSON Hybrid. Mpg (l/100km): Combined 39.8 (7.1) to 50.4 (5.6). CO₂ emissions: 160 - 127 g/km.
Figures shown are for comparison only and are not intended to be used as a guide. Figures with other cars tested in the same technical parameters. These figures do not reflect real world driving results, which
will depend upon a number of factors including the accessories fitted (post-registration), variations in weather, driving styles and vehicle load. Hyundai 5-year Warranty subject to Terms and Conditions.

£10.00
OFF YOUR NEXT MOT



WESTRIDGE GARAGE

01983 562717 / 562160

westridgegarage.co.uk

Brading Road, Ryde, Isle of Wight, PO33 1AY

This voucher cannot be used in conjunction with any other
reduced price MOT offer. (rrp £54.85). Exp 31st October 2021



Brilliant BULBS



When planting bulbs for indoor displays, choose the containers carefully – they'll be on show just as much as their contents. Don't limit yourself to conventional flowerpots. Flea markets and charity shops are great hunting grounds for quirky containers; search out vintage ceramic bowls, teacups and tureens – even forlorn teapots with missing lids can be repurposed!

Note the potential height of the bulbs. Larger and taller plants require bigger containers – for aesthetic appearance and also practical stability. Some containers aren't reliably watertight. Use glazed saucers and protective mats on vulnerable surfaces, or group several containers together on a waterproof tray. Top-dressing the soil with coloured gravel gives a sleek, contemporary look, or use moss or chipped bark to create a rustic theme. Heavy-headed hyacinths and tall narcissi will require support from bamboo canes or twigs.

If the container has drainage holes, use ordinary multi-purpose potting compost, adding a handful of grit to aid drainage. For those without holes, bulb fibre is preferable. This super-absorbent material is made from shredded coir and

The shorter days are here, but a succession of potted indoor bulbs will give your home colour and cheer throughout winter, writes Flo Whitaker

wood. It provides a uniformly moist growing medium that prevents water 'pooling' around the bulbs and damaging the roots.

Some bulb packets, (typically narcissi and hyacinths) are labelled, 'prepared'. This means the bulbs have been artificially subjected to a period of cold in an industrial chiller. Pre-chilling manipulates the growth cycle; the bulbs think winter has already occurred and start into

Flea markets and charity shops are great hunting grounds for quirky containers



rapid 'springtime' growth when planted. Prepared bulbs will reliably flower around Christmas time.

They're expensive, but don't assume you can save money by purchasing standard bulbs and administering the cold treatment yourself. A domestic fridge has a damp atmosphere and the bulbs will probably rot. There's nothing worse than the stench of rotting bulbs – the aroma lingers for days. Trust me...

With forward planning, you can have a succession of bulbs from December through to April.

Following on from the 'prepared' types, choose narcissi that are naturally early to flower. Try 'Cragford', 'Soleil D'or', 'Avalanche' and the aptly-named 'Erlicheer' for colour



BARNEY'S TYRES

Tyres at great prices!



**BUDGET, MEDIUM & BRANDED
RANGE TYRES FOR CARS,
VANS, 4X4'S & TRAILERS
ALL AVAILABLE AT LOW PRICES!**



- PUNCTURES & WHEEL BALANCING
- OPEN 8-5.30 MON-FRI & 8-1 SAT
- NO NEED TO BOOK, JUST TURN UP!
- ACCEPT CASH & CARD PAYMENTS
- UNIT 4, ALBANY CENTRE, FOREST ROAD, NEWPORT, ISLE OF WIGHT PO30 5NB

T: 01983 529061

**WE CAN FIT YOUR TYRES
AT WORK OR HOME!**



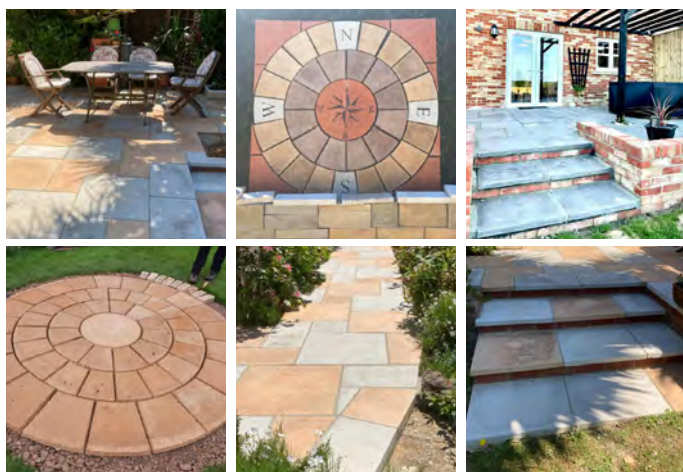
Mobile fitting service - call & book a convenient time for you

M: 07788 817511

ISLAND PAVING
(01983) 526667

PAVING AND BLOCK WALLING

- *Concrete posts and gravel boards
(Made to order)*
- *Smooth and Rock finish*



Deliveries island wide



We are more than electricians



*Boiler broken or in
need of a service?
Call us today for
a free quote*

01983 294 557

lemlecelectrical.co.uk



throughout January and February. For later blooms, 'Silver Chimes', 'Cheerfulness' and the gorgeous, but stupidly-named 'Geranium' extend the season to Easter and beyond.

Tiny containers will hold enough soil for a cyclamen corm, or a few muscari, snowdrop or crocus bulbs. These dainty spring beauties cannot easily be forced. Once potted, keep them outside in a sheltered spot and bring indoors when they are on the point of flowering.

An indoor environment is challenging for spring bulbs, but they'll stoically cope, so long as they're kept away from direct heat sources. After flowering, take them outside and feed with a general-purpose fertiliser. When the foliage has died down, they can be planted out into a border, where they will continue to provide colour for years to come. ●

“With forward planning, you can have a succession of bulbs from December – April”



NIXON AUTOMOTIVE SERVICES LTD.

We carry out all aspects of vehicle servicing and repair, with the latest servicing and diagnostic equipment.

AIR CONDITIONING SERVICE

INTAKE CARBON CLEANING

DPF CLEANING

01983 522033

nixonautomotive@outlook.com
2 DAISH WAY
NEWPORT
PO30 5XB

**INTERIM SERVICE
£75**

**FULL SERVICE
£135**

SERVICE PRICE IS FOR 2.0 Ltr ENGINES AND UNDER. PLEASE CALL FOR QUOTE ON LARGER ENGINE VEHICLES ALL PRICES ARE +VAT



NIXON
AUTOMOTIVE SERVICES



STUDIOPHASE

The Isle of Wight's local TV experts
Call 404406 studiophase.com

Why choose us?

- CAI approved • Friendly, reliable engineers
- We have over 30 years of local knowledge

Freeview
freesat
sky cai

JOSH KERLEY
TREE SERVICES

✓ All aspects of tree work undertaken
✓ NPTC Qualified and fully insured

FREE NO OBLIGATION QUOTES

TEL: 07875021682
Email: info@joshkerleytreeservices.co.uk
www.joshkerleytreeservices.co.uk

A&E BUILDERS
BUILDING & CONSTRUCTION SERVICES
No job too big or small!
EMAIL: aebuilders71@gmail.com

- DRIVEWAYS • PATIOS • EXTENSIONS
- SPECIALIST BRICKWORK
- ORANGERIES • PORCHES
- DRAINAGE & HOUSEHOLD MAINTENANCE

Call for a no obligation free quote from a builder with over 30 years experience. Public liability insured.

TEL. 07525700980/01983 883787

THE ISLAND'S FAVOURITE...

isle of wight radio

'Topping in the Morning'
with Paul, Jamie and Hayley
every weekday from 6am

FM107 & 102
For the latest breaking Island news
iwradio.co.uk

Facebook: [isleofwightradio](https://www.facebook.com/isleofwightradio)
Twitter: @iwradio
Instagram: @iwradio

The Island's **Favourites**

N.P.WALDEN
ELECTRICAL
Domestic Installer

NICEIC Registered

01983 401078
07702 905876
nicholas.walden@btinternet.com

YOUNG
PLUMBING
PLUMBING & HEATING SERVICES

Tel: 01983 339671
Mb: 07967 225030
www.YoungPlumbing.co.uk

SOS HANDYMAN

FED UP PAYING OVERPRICED TRADESMEN?
T:07984 346635

Cherry Tree shutters
Changing your view

20% SALE NOW ON!

01983 640174
www.cherrytreeslutters.co.uk

Providing interior plantation shutters to cover any window style or colour including; Square, Rectangle, Circular, Arched, Bays and Patio Doors.

0% FINANCE AVAILABLE

Twitter Facebook Instagram

*Terms & Conditions Apply

Checkatrade.com

WIN! Can you spot the differences?



PRIZE PREFERENCE (CHOOSE ONE ONLY):

1 ☐ 2 ☐ 3 ☐ 4 ☐

THIS MONTH'S PRIZES...

**SOUTHERN
VECTIS**
◀ the island's buses ▶



**24 hour travel pass
for up to 5 people**
Courtesy of islandbuses.info



£25 Voucher
Courtesy of Grace's Bakery
Tel: (01983) 632231
www.gracesbakery.uk



**Pair of Saturday
Shopper tickets**
Courtesy of Solent Cruises
Tel: (01983) 564602
www.solentcruises.co.uk



**Helly Hansen - Camo Oxford
Backpack 20L**
Worth £66.00
www.idmlworkwear.co.uk/

NAME: _____ TEL: _____

ADDRESS: _____

POSTCODE: _____ E-MAIL: _____

- ☐ I am happy to be contacted by the sponsors for marketing purposes
☐ I would like to receive Beacon Magazine's weekly email newsletter with more competitions

Closing date - 31ST OCTOBER 2021

Send your entries to: **IW Beacon Competition, 8-10 Dodnor Park, Newport, Isle of Wight, PO30 5XE**
 When sending your entry to us you **MUST** ensure that you use the correct postage. Terms and conditions available on request.
 Prizes must be claimed within 30 days of the draw date. Previous winners can be found on our Facebook and Twitter pages.
 Winners will be contacted by phone.

Did you know...

You can take a photo on your phone and email your entry to win@iwbeacon.com.



LARGEST STOCKIST ON THE ISLAND

2011

D&S
CARPETS

2021

Celebrating
10 years in business!

15% OFF all carpet orders and
10% OFF all hard flooring orders

INTEREST
FREE CREDIT

Subject to status on orders over £495.
(Excludes fitting charges)

D&S Carpets are authorised and regulated by the Financial Conduct Authority. We are a credit broker not a lender – credit is subject to status and affordability, and is provided by Hitachi Capital (UK) PLC. Terms and conditions apply.



THANKS TO ALL
OUR CUSTOMERS
OVER THE LAST
10 YEARS

The Island's CARPET & FLOORING SUPERSTORE

12 Hurstake, Riverway Industrial Estate, Newport, Isle of Wight, PO30 5UU
OPEN 7 DAYS A WEEK • FREE ESTIMATES ISLANDWIDE
Mon – Fri 9am – 6pm, Sat 9am – 5pm, Sun 10am – 4pm **FREE PARKING**



01983 533150

www.dscarpets.co.uk

Rugs

Luxury
Vinyl Tiles

Wood & Natural
Flooring

Vinyls

Carpets