

CENTRAL AND
WEST WIGHT

Pick up your FREE copy

Beacon

September 2021



Festival FEVER

HISTORY
RYDE
TOWN
HALL

RECIPES

HONEY GRIDDLED PRAWNS
SPICED LOUKOUMADES

ISLAND STORY
A RATHER
BEWILDERING
SPECTACLE



Pay what you see,
leave at any time*

- Rolling 30 day contract
- 30 days' notice to cancel
- No exit fee

Annual price increases in April each year apply. Reconnection fee applies if leaving and re-joining within 12 months. Simple as that. See [WightFibre.com/FussFree](https://www.wightfibre.com/FussFree) for details.

A Different Kind of Broadband Full-fibre • Ultrafast • Future-proof

wightfibre
because we care

Order online at [wightfibre.com](https://www.wightfibre.com)
or call 01983 240240

OVER 55,
BRAND NEW
EXTRA CARE
SHARED
OWNERSHIP
APARTMENTS

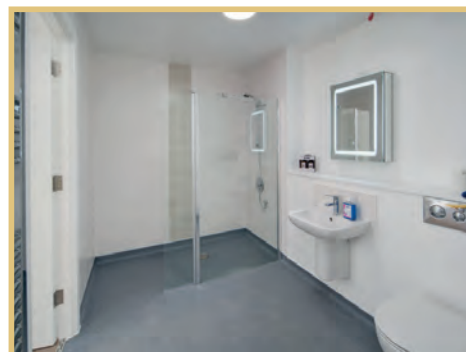


SHOW APARTMENT NOW AVAILABLE TO VIEW

All residents can be supported by the Wellbeing Team who are there to help everyone feel settled, supported and safe; this unique Wellbeing service can respond to your needs 24hrs a day on an unplanned care basis, enabling you to live independently in your own home.

To feel part of a community, there is access to activities every day such as:

- **Minibus outings**
- **Scheme shop**
- **Hairdressers**
- **Activities & Lunch Club**
- **Reception desk 7 days a week**
- **Communal lounge**
- **Laundry room**
- **Fitness room**
- **Dining room**



All apartments are built and equipped with emergency pull cord which connects you to 24 hours a day staff on site who can respond in a serious emergency for your peace of mind.



Welcome from the EDITOR

Who else is crossing their fingers for an Indian summer? I know I am.

Despite a lot of rain in recent weeks, I hope you've been able to have a great time out and about on our lovely little Island. Or even at home and out in the garden.

Speaking of the garden – now's the perfect time to start picking autumn berries and harvesting the last of your fruits and vegetables. Keep an eye on our website for loads of tips for gardening throughout the year – iwbeacon.com.

You'll find even more gardening tips and lots of other great features in this edition of Beacon Magazine, including fascinating Isle of Wight history, another local walk and some seriously tasty recipes (we know these are so popular with readers). How about some honey-griddled prawns, or perhaps enjoy a little taste of Greece with our recipe for spiced Loukoumades. Perfect for an evening barbecue during that Indian summer we're hoping for!

Amy Shephard

Editor amy.shephard@iwbeacon.com



5

18

29

- 5** History: Ryde Town Hall
- 7** Recipe: Honey Griddled Prawns
- 9** Recipe: Spiced Loukoumades
- 11** Walking the Island: Walk the Wight Flat Walk
- 13** John Hannam meets Cathy Tyson
- 17** Win a Holiday to Barbados
- 18-19** A Rather Bewildering Spectacle
- 20-23** News from your area
- 29-30** Gardens: Shady Ladies
- 33** Puzzle Page
- 35** Spot the Difference Competition

Beacon
MAGAZINE

IW Beacon Media Centre, 8-10 Dodnor Park, Newport, PO30 5XE

CALL US
01983 433112

FACEBOOK
[iwbeacon](https://www.facebook.com/iwbeacon)

TWITTER
[@iwbeaconmag](https://twitter.com/iwbeaconmag)

VISIT US
iwbeacon.com

INSTAGRAM
[@beaconiow](https://www.instagram.com/beaconiow)

EMAIL
hello@iwbeacon.com

totalsensemedia



Da Vinci
Mediterranean Restaurant & Bar



Now Open!

*Steak on the rocks, fresh pizza,
speciality cocktails.*

11 Holyrood Street, Newport PO30 5AU

For Bookings: 01983 300055

www.davinciow.co.uk



ISLAND ESSENTIALS
FRESH & HANDMADE
WITH FREE DELIVERY!



GRACESBAKERY.UK/SHOP - 01983 566868

Fuss-Free Contracts

From
£22.95
per month

**Pay what you see,
leave at any time***

- Rolling 30 day contract
- 30 days' notice to cancel
- No exit fee

Call us for FREE on **0800 785 1000** and our Friendly Island Sales Team will help you choose the right package.



Annual price increases in April each year apply. Reconnection fee applies if leaving and re-joining within 12 months. Simple as that. See WightFibre.com/FussFree for details.

Pay what you see, leave at any time.*

We are putting our money where our mouth is with fuss-free rolling monthly contracts!

No complicated contracts, no hidden fees, no upfront fee, no installation fee.

What are you waiting for? Order today!

- Installation within 5 to 10 days by our very own Island Engineers.
- Want to keep your telephone number? No problem, we will take care of it.
- Switch to our Different Kind of Broadband, broadband that just works!

wightfibre
because we care

A Different Kind of Broadband • Full-fibre • Ultrafast • Future-proof

The History of RYDE TOWN HALL

Opening primarily as a market hall in 1831, Ryde Town Hall has a rich history of holding extravagant balls, concerts, royal visits — and was also home to Ryde Borough Council.

The Grade II listed building was designed in a neoclassical style by James Sanderson of London — and built in coursed stone in 1830. The design featured an impressive tetrastyle portico leading to the entrance and Doric order columns. Iron railings at the front of the building were emblazoned with the town's coat of arms.

The clock tower wasn't added until 1869, when the area became a municipal borough following a significant growth in Ryde's population. An additional storey was also added to the east wing, designed by local architect, Francis Newman.

In the late 19th century — and in celebration of Queen Victoria's Diamond Jubilee — an organ was installed in the main hall at the cost of £1,000.

On June 6th 1933, a fire ripped through the building causing the roof to collapse. Several fireman from Ryde suffered from heat exhaustion and partial asphyxiation after battling the flames.

The building was subsequently restored and returned to use as Ryde Borough Council's headquarters.

Work to convert the first floor into a theatre, complete with balcony and Proscenium arch took place in 1991 and the building was used as such until its closure in 2005. In the years that followed, Ryde Town Hall hosted bands such as The Stranglers (in 2009). Although its time as a music venue was short lived, as the venue closed completely in April 2010 and sold to a developer three years later.

Since the sale, the development failed to progress and Ryde Town Hall fell foul to vandalism.

IW Railway staff day out, at Ryde Town Hall. Circa 1910.

In the photo: Frederick William Attrill, Ryde Station Master George Finch, Mr Dyer, Joseph George Lacey, Ernie Knight, Joseph Lacey and Foreman Mr Smith. Can you name anyone else? Let us know at hello@iwbeacon.com.



In the late 19th century — and in celebration of Queen Victoria's Diamond Jubilee — an organ was installed in the main hall at the cost of £1,000.

Ryde Town Council took on a three year lease on the building in 2020, with plans to raise funds to restore it — despite estimated repair costs totalling more than £2.4million.

The town council began discussions with the new owners but was issued with an ultimatum to decide what they wanted

to do by July of this year.

Following heated discussions, the town council voted in favour of taking on the run-down building in July. While its future is still uncertain, it is hoped one day Ryde Town Hall will return to its position within the community.

Councillor Phil Jordan said: “As we have seen in this town, private ownership does not work: these buildings fall into disrepair. The only future for a building of this nature is to bring it back into community use, with either public or community ownership. If we do not buy the building, its future is not very good.” ³



In 1906, The King of Spain, Alfonso X visited Ryde. Here he's arriving at Ryde Town Hall by carriage.



A fire ripped through the building in 1933, causing the roof to collapse.



THERE'S
**STILL
TIME**
TO APPLY!

SCHOOL-LEAVERS

NEW HORIZONS NEW BEGINNINGS

**IF YOU'RE NOT SURE WHAT TO DO NEXT, THAT'S OK.
AT HTP APPRENTICESHIP COLLEGE WE'LL HELP YOU
DISCOVER AND BUILD YOUR CAREER – IT'S WHAT WE DO.**

Not everyone knows what they want to do next in life – we get that.

Our flexible one-year courses can give you the opportunity to learn more about the direction you want to take. You can clear your head and get a fresh start with a range of engaging programmes, gaining real qualifications to help you choose and prepare for your next career adventure.

HTP is a very different education provider. With our smaller group sizes and more personalised tuition, you'll gain exciting new skills and start to plan your next move – whether it's continuing with Further or Higher Education, or into a job with an Apprenticeship. And what's more, our super-friendly team at Riverbank Campus in Newport will support you every step of the way.

Get on-board with HTP. Talk to us today and we'll help you expand your horizons.

TRY SOMETHING DIFFERENT

Our wide range of term-time courses includes:

- Health & Social Care
- Hospitality & Tourism
- Sport, Leisure & Outdoor Pursuits
- Creative Conservation
- Professional Cookery
- Business Administration
- Childcare & Education
- Horse Care & Riding
- Nail Technology

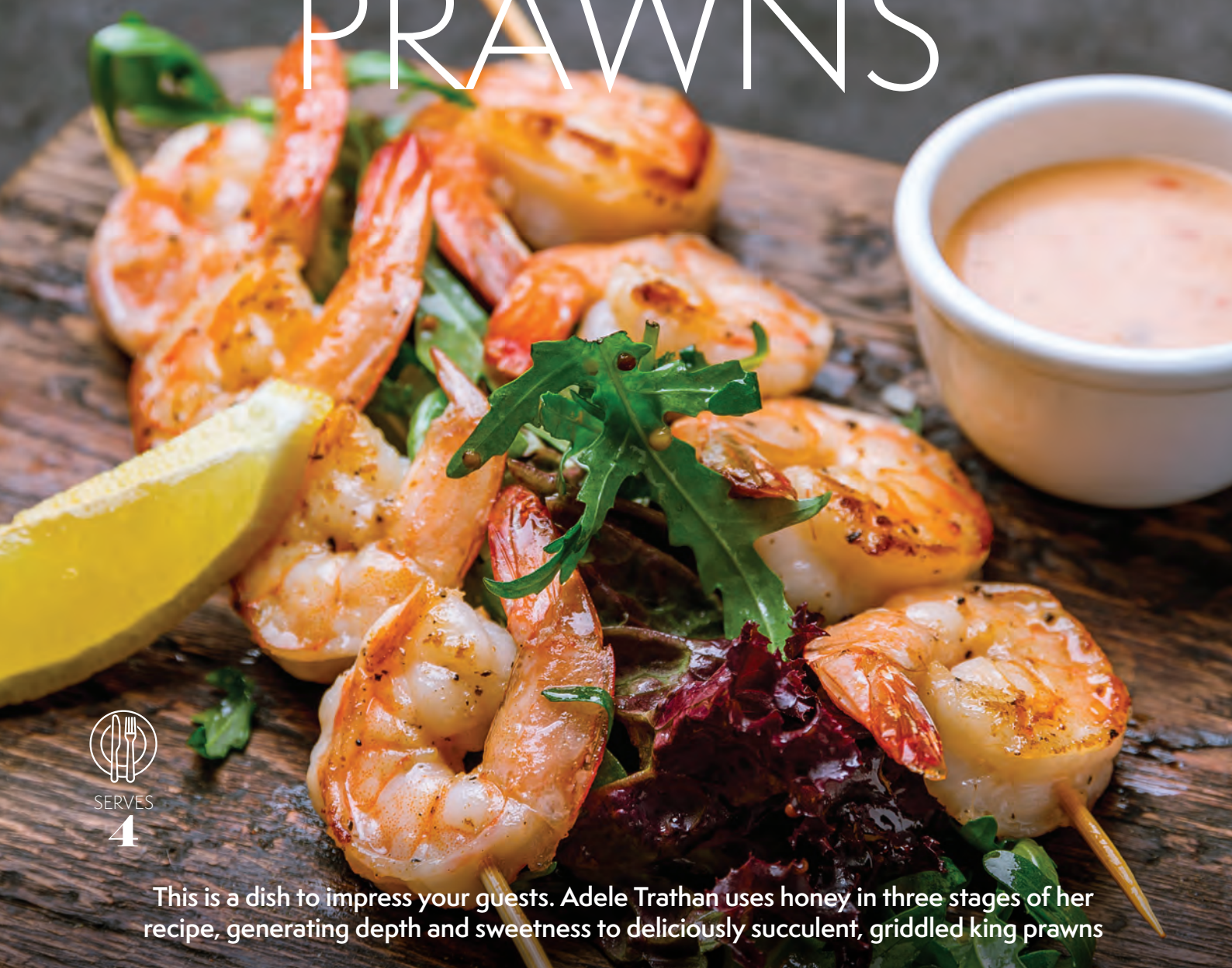
**CAN'T
DECIDE?**
Try our
**'SUBJECT
TASTERS'**

*Apply now.
It's not too late!*

No tuition fees • One-year programmes • Flexible modules • Excellent student support

Visit http.ac.uk • or call 01983 533926

Honey Griddled PRAWNS



SERVES

4

This is a dish to impress your guests. Adele Trathan uses honey in three stages of her recipe, generating depth and sweetness to deliciously succulent, griddled king prawns

INGREDIENTS

700g (1lb 8oz) uncooked, king prawns with tails on
250ml (8½fl oz) boiled water
2 tsp salt
6 tbsp quality runny honey
1 handful of ice cubes
3 tbsp red wine vinegar
3 tbsp extra-virgin olive oil
3 spring onions, finely shredded
2 garlic cloves, crushed
1 small red chilli, finely sliced
Small bunch of flat-leaf parsley, finely chopped
A few sprigs of fresh oregano, finely chopped
1 sliced lemon

METHOD

1 Put the boiled water, salt and two tablespoons of the honey into a bowl and stir until the salt dissolves. Add the ice cubes and stir through to allow the mixture to cool quickly. Once cool, add the prawns and pop into the fridge for 30 minutes.

2 Remove from the fridge and discard the liquid. Pat the prawns dry using kitchen paper. Then, in a bowl, mix a further two tablespoons of honey in with the prawns.

3 In a separate large bowl combine the red wine vinegar and remaining

two tablespoons of honey with a whisk. Gradually add the olive oil, stirring with the whisk continuously until well blended, then stir in the onions, garlic and herbs.

4 Pre-heat a lightly oiled griddle-pan over a medium-high heat, add the prawns and cook for 2½ minutes on each side, until cooked through, pink and lightly charred.

5 Add the prawns to the honey, olive oil and herb bowl and toss well to coat the prawns. Serve on a platter with salad leaves and slices of lemon or slide on to skewers for individual portions. **B**

BARNEY'S TYRES

WE CAN FIT YOUR TYRES AT WORK OR HOME!

Tyres at great prices!



**PUNCTURES & WHEEL BALANCING
OPEN 8-5.30 MON-FRI & 8-1 SAT
NO NEED TO BOOK, JUST TURN UP!
ACCEPT CASH & CARD PAYMENTS**

**UNIT 4, ALBANY CENTRE, FOREST ROAD, NEWPORT,
ISLE OF WIGHT PO30 5NB**

**BUDGET, MEDIUM & BRANDED RANGE TYRES FOR CARS,
VANS, 4X4'S & TRAILERS
ALL AVAILABLE AT LOW PRICES!**

Mobile fitting service - call &
book a convenient time for you



T: 01983 529061

M: 07788 817511

Adele Trathan loves these delicious Greek treats. They are similar to doughnuts or churros, but a healthier option as they are baked rather than deep fried, then soaked in a warm spiced honey

SPICED *Loukourmades*

INGREDIENTS

250g (9oz) strong white flour
7g sachet fast-action yeast
175ml (6fl oz) water
5g (1tsp) salt

For the syrup:

250ml (8½fl oz) water
250g (9oz) honey

3 cardamom pods, bruised
1 cinnamon stick
1 star anise
A handful of pistachio kernels,
optional to garnish

MAKES
20
PIECES



METHOD

1 Mix the flour, salt and yeast together in a bowl, then add the water and combine to make a dough. Knead the dough for at least 10 minutes, until smooth and stretchy.

2 Place the bowl in a warm place for one hour, or until the dough has doubled in size. When the dough has risen, divide it into 20 equally sized small balls.

3 Line two baking sheets with baking paper and place ten dough balls on each tray, allowing plenty of space between them. Preheat the oven to 200C/400F/gas mark 6.

4 Cover the dough balls with some oiled cling film and allow the balls to rise for a further 40 minutes. Remove the cling film and bake in the oven for 10-12 minutes, or until they turn golden brown.

5 In the meantime, place the water, honey, cinnamon stick, cardamom pods and star anise into a medium saucepan. Heat on the hob over a medium to high heat and simmer gently for at least five minutes. Remove from the heat and allow the spice to infuse until needed.

6 Remove the spices and drop the dough balls into the syrup, gently stirring to cover each one in a generous coating of syrup. Serve with a dollop of Greek yoghurt and an optional sprinkling of pistachio kernels. **B**



Is there space for a child in your life?

Talk to our friendly team and find out how your adoption journey could start today

You can be:

A couple or single • LGBT+ • Already a family • Disabled • Claiming Universal Credit
Renting, mortgage or shared ownership homeowner

We have BAME children who need their forever family.
Financial support available for siblings and children with complex needs.

0300 3000 011 • adoptsouth.org.uk  

The Regional Adoption Agency for:



Walk the Wight with **Mountbatten**



Sunday 12th September

Register at mountbatten.org.uk



Walk the popular 8-mile flat walk, from Sandown to Shide, in aid of Mountbatten, either on the day of Walk the Wight, or at any point throughout September with Walk the Wight Your Way.

The Flat Walk is popular with families, dogs (on leads) and people who would find the inclines of the main walks

challenging. It's also completely pushchair and wheelchair friendly.

You'll start at The Fairway in Sandown and head along the countryside cycle track towards Merstone, past farmland, through Blackwater and arrive, on the other side of the woodland, at Shide Trees in Newport. There's opportunities to stop for a picnic along the way if you wish. As well as a couple



Photo courtesy of Malc McDonald

of places to purchase a drink or an ice cream.

Walk the Wight 2021 will take place on Sunday, September 12th.

For more details about how to take part, head to mountbatten.org.uk/register-to-walk-the-wight. 



Distance: 8 miles **Walk Time:** 2-4 hours

**Saving water
saves money,
cuts carbon
and protects the
environment.
It all makes
a difference.**

For more simple tips on
how to save water, visit:
southernwater.co.uk/save

**WATER
for LIFE®**

from
**Southern
Water®**

OPPORTUNITY IS AROUND THE CORNER

**LEAVE YOUR
BUSINESS IN SAFE
HANDS WITH
PERTEMPS**

Here at Pertemps we have skilled candidates
ready and waiting to hear from you...

We can fulfil your **recruitment needs** at short
notice, and send you the very best people to
help you in your hour/day/week of need.

INDUSTRIES WE RECRUIT IN:

- Bar Staff
- Warehouse Assistants
- Customer Service
- Waiting Staff
- Pickers & Packers
- Administrators
- Cleaners
- Engineers
- Accountants & Bookkeepers
- HGV Drivers
- Machine Operators
- Event Staff
- Van Drivers
- FLT Drivers

For all **Industrial and Driving** enquiries:

📞 **01983 533235**

✉ Joelee.Rowe@Pertemps.co.uk

For all **Office based, Technical and Event** enquiries:

📞 **01983 533235**

✉ Rhiannon.Morey@Pertemps.co.uk

www.pertemps.co.uk

Pertemps
the face of recruitment

We offer genuine caring people
who will give you a standard of care
and support that can really make a
difference to your life.

Services we offer include:

Personal care, medication, shopping,
help around the house, going in/out
of hospital, specialised needs,
companionship, holiday/mainland
assistance, day sits, sleep-ins, 24/7
care/assistance.

We can visit you to discuss what
you require, under no obligation and
plan a way forward that suits your
requirements. All staff are police
checked and fully insured. CQC
registered.

Do you need assistance to have the quality of life that you deserve?

**Don't just think
care - SAY care
NOW
RECRUITING**

 **Say Care Limited**
Liber Libera, Liberum

Afton Road, Freshwater (opposite garden centre)

For a full price list or further information please contact:

Telephone: **01983 716686**

Email: **saycarelimited@gmail.com**

www.saycare.co.uk

A day to remember with

CATHY TYSON

Back in 1986 I went to see *Mona Lisa*, one of the big new movies of the year. The two big stars, Bob Hoskins and Michael Caine, certainly lived up to their reputations and I was also completely blown away by the big screen debut of Liverpool stage actor Cathy Tyson.

By John Hannam

Cathy went straight into my little black book, where I jot down the names of many people I would love to interview. My strike rate has been unexpectedly high but not in the case of Miss Tyson. It took me until 2001, after a few disappointments, but by then she was a household name following huge success in mega television series like *Band of Gold* and *Gold*.

Our interview, for IW Radio, was quickly arranged for the Nuffield Theatre, Southampton, where she was starring in a brand new play called *The Shagaround*. My request went in less than five minutes after I received the press release. I had finally made it — or had I?

When the exciting day arrived my wife, Heather, answered my mobile as we drove out of Newport. It was to say that Cathy was stuck in traffic in London and would not have time to see me before the show. It was arranged for a few days later. We went early morning shopping and on the way home Heather answered my mobile again and was told Cathy was not feeling well and, understandably, did not want to undertake an interview before the show. A forthcoming Bank Holiday Monday was my next selected opportunity.

I was teased by Heather who told me that, obviously, she just does not want to see you.

It was a quiet Bank Holiday in Southampton and I caught the Unilink



bus to the Nuffield and there was not a soul around in the theatre foyer. Then a door opened and in she walked. "You must be John. We can finally get together. Sorry this is the third time," said Cathy.

We disappeared into a very quiet and cosy office and 45 minutes later Cathy began to think about that night's show and I headed home.

Cathy, whose great aunt was a nun, was brought up in Liverpool by Margaret, her single parent mother. Life was not easy. She was very shy during her early school years and hated drama. That was to change at the local secondary school and later at the city's Everyman Theatre, when she appeared in a production called *In The City*. She was seen as an old lady who fed the ducks. There was a hint of what was to come when her character talked directly to the audience.

Her success at the Everyman led directly to the Royal Shakespeare Company at Stratford, which proved a culture shock.

"It seemed I was in the middle class area that I had rebelled against. At first, I was reluctant to embrace it with open arms. I'd come from Liverpool and still had lots of feelings about being black amidst a majority of white people and of being very defensive. I was only 18 and had so many feelings going on, as well as having so many things to learn."

She worked so hard with her theatre work. There were endless rehearsals playing parts and reading scripts. She

had missed so much of the social life that 18-year-olds enjoy. I was relieved to know she had since made up for it.

"I was so surprised to get that part. I was only 20 and it was my first movie"

What of that leading role of Simone in *Mona Lisa*, for which she won an award and enjoyed several nominations? "I was so surprised to get that part. I was only 20 and it was my first movie. I was so sure I wouldn't get the part I even left the script behind."

I had quickly realised that Cathy was a very intelligent actor and a deep thinker. It was no surprise to learn a few years later that she had given up the business for a while to go to university.

Her other successes have included *Grange Hill* and *Night and Day*. She can still be seen in various television dramas.

I think one of her greatest triumphs was when she appeared in the amazing live television show called *Liverpool Nativity*, set on the streets of the famous city. She played Herodia in an incredible production that was brilliantly hosted by the late Islander Geoffrey Hughes.

Before I left the Nuffield I had to confess to her that my thoughts on chicken farmers had changed since I saw *Band of Gold*. Sexy nylons and marigold gloves seemed so much fun! ☺



Artisan 96 High Street

*Your one stop shop for bespoke,
unique and delicious gifts.*

Wight Love
Designs

Luxurious
Shortbread
Handmade on the Isle of Wight
The Peck www.thepeck.co.uk

Fabulously Personal

Lala's Baby
Boutique

TRUFFLES
FUDGE BAR

Geoff Lewis
PHOTOGRAPHY

96 High Street Newport PO30 1BQ
Tel: 07508869826 [f artisan96highstreet](https://www.facebook.com/artisan96highstreet)

WEEKENDS ONLY THROUGHOUT SEPTEMBER (Weather depending)

Departs Thetis Wharf, Cowes (next to the Chain Ferry) at **0930 hours** to Gunwharf Quays, Portsmouth. Returning at approximately **1700 hours** from Gunwharf Quays back to Thetis Wharf, Cowes. (Please listen out for announcements for exact time). **Adults £9 / OAPs £8 / Children £7.** Price does not include admission to attractions



**Booking is essential before travelling.
Call us on 01983 564602**



Sailings are subject to any COVID restrictions in place at the time.
FACE MASKS are advised when inside the boat

ST HELENS SERVICE STATION ALL MAKES SERVICE & DIAGNOSTICS

Factory level diagnostics & services for BMW, Volvo, Peugeot, Citroen and Renault
Genuine parts supplied for Jaguar, Land Rover and Porsche



VOLKSWAGEN • PEUGEOT • RENAULT • CITROEN • BMW • MERCEDES



**MOTs AVAILABLE FOR ALL
MAKES & MODELS**

Embankment Road, Bembridge PO35 5NS. Tel. 01983 872332 or 07920 224181



Direct Cremation Specialists based here on the Isle of Wight for the Isle of Wight
The Island's only Independent Funeral Directors who are dedicated to this style of service
Affordable Direct Cremations. Separate the Cremation from the Celebration.

Unlike mainland providers, we can take your loved one into our care day or night without the need for travelling over by ferry, involving delays, distress and additional costs to prices quoted.

We pride ourselves by offering great value for money without any compromise on the care given to you and your loved ones.

We are proud to be the longest service Island Independent Family Funeral Directors.

Golden Charter
 Funeral Plans

**Direct
 cremations
 from £1,495
 Funeral Plans
 from £1,750**

Call 01983 632598 info@isleofwightdirectcremation.co.uk

www.isleofwightdirectcremation.co.uk

What is direct cremation?

Quite simply, it is an alternative to a traditional funeral. The cremation takes place unattended, giving you the freedom to celebrate your loved one at a time, place and venue of your choice.

How much does a direct cremation cost?

We have 2 options to choose from:-

1. Our 'Island Way' is £1,695.00 - this is for the direct cremation at the Isle of Wight Crematorium
2. Our 'Wessex Way' is £1,495.00 this is for a direct cremation at a mainland crematorium

We offer this option for families who would like to take advantage of savings that mainland crematoriums offer.

Can I get help with the costs?

Yes, if you are in receipt of benefits you may be entitled to a payment of up to £1,000 from the Department of Work and Pensions, so we advise contacting them to enquire.

What is the difference between Isle of Wight Cremation and a mainland provider?

We are based here on the Island, we can take your loved one into our care promptly and without the distressing delay of travelling over on the ferries.

We can meet you face to face at our Island offices. Or make all arrangements over the telephone.

Whereas mainland providers often courier the ashes back, we provide a more personal service by hand delivering them to you at your home, or you can come in and collect them at either of our offices. We are locals and understand our local community.

Do you offer prepaid direct cremation funeral plans?

Yes, we do and we use Golden Charter, the UK's market leader for providing prepaid funeral plans to Independent Funeral Directors. Your funds are safe and placed into the Golden Charter Trust. Recently we were awarded by Golden Charter as the best funeral planner for 2020 in the Southern England Region.

COVID-19 PCR Testing on The Isle of Wight

Same Day Antigen Fit-to-Fly £99



Reliable and efficient service on The Isle of Wight.

TESTS AVAILABLE 7 DAYS A WEEK

Our Services

- ✓ Fit-to-Fly from £99
- ✓ Test-to-Release from £149
- ✓ Return to the UK £40
- ✓ Antibody tests from £60
- ✓ Day 2 & 8 tests form £189

Why choose us

- ✓ Multiple processing times
- ✓ Pre-booked time
- ✓ Same day available
- ✓ UKAS accredited laboratory

T: 0330 025 2028

www.nlcliniow.co.uk

62 Crocker Street, Newport, Isle of Wight, PO30 5DA

Alzheimer Cafés

Tel: 01983 220200

Email: info@alzheimercafeiow.org.uk

Website: www.alzheimercafeiow.org.uk



East Cowes Alzheimer Café

East Cowes Town Hall
York Ave, East Cowes PO32 6RU
First Tuesday of the month
2pm—4pm

Cowes Alzheimer Café

Football Club, Reynolds Close
off Park Road, Cowes PO31 7NT
Second Wednesday of the month
2pm—4pm

Totland Alzheimer Café

St Saviours Holy Family Centre
Weston Lane, Totland PO39 0HE
Third Wednesday of the month
2pm—4pm

Sandown Alzheimer Café

The Broadway Centre
1 Broadway, Sandown PO36 9GG
Fourth Wednesday of the month
2pm—4pm

Newport Alzheimer Café

IOW College, Medina Way
(Conference Rm, PINK Building)
Newport PO30 5TA
Last Thursday of the month
6pm—8pm

ACE7 Alzheimer Café

Carers IW, Riverside Centre
Newport PO30 2QR
2nd and 4th Tuesdays of the month
10.30am—12.00 o'clock

Ryde Alzheimer Café

All Saints' Church Hall
Queen's Road, Ryde PO33 3AF
First Friday of the month
11am—1pm

Ventnor Alzheimer Café



Newcomers very welcome

Booking only necessary when Covid-19 restrictions apply

An Alzheimer Café is a meeting place providing informal education about dementia, guidance and signposting to other services. We welcome people with dementia, their families, carers, professionals and anyone with an interest in dementia.

The Island's
**CARPET & FLOORING
SUPERSTORE**



OPEN 7 DAYS A WEEK

MON - FRI 9AM - 6PM

SAT 9AM - 5PM

SUN 10AM - 4PM

01983 533150

12 Hurstake Road, Riverway Industrial
Estate, Newport, Isle of Wight,
PO30 5UU (next to Jollyes)

**NO DEPOSIT
INTEREST FREE
CREDIT**

Subject to status on orders over £495*

D&S Carpets are authorised and regulated by the Financial
Conduct Authority. We are a credit broker not a lender - credit is
subject to status and affordability, and is provided by Hitachi
Capital (UK) PLC. Terms & Conditions Apply.

*Excludes fitting charges



www.dscarpets.co.uk

Rugs

Luxury
Vinyl Tiles

Wood &
Natural
Flooring

Vinyls

Carpets

WIN A LUXURY HOLIDAY TO *Barbados*



Fancy winning a break in one of the world's safest, and most luxurious destinations? Isle of Wight Radio has teamed up with Barbados Tourism to bring one lucky winner and their guest a week's luxury holiday on the beautiful Caribbean Island of Barbados.

Flying with British Airways, the winner and their guest will check in to Saint Philip's breathtaking Crane Resort. Isle of Wight Radio will look after you every step of the way, making sure you enjoy a truly memorable holiday in luxury.

Isle of Wight Radio will be broadcasting daily from the resort — so you can get a taste of what's up for grabs.

For over a century, the historic Crane Resort has surveyed the famous pink sands and turquoise waters of Crane Beach from its dramatic cliff-top perch. A Barbadian legend since 1887, and the oldest operating hotel in the Caribbean, The Crane effortlessly marries the old-world charm of its past to all the 21st century amenities and services expected by today's most discerning travellers.

From grand colonial styled suites featuring lush gardens, private pools and rooftop terraces, to an impressive array of world-class amenities and services including fitness facilities, kids club, spectacular cascading pools, exciting restaurants and of course, the Zagat rated

Zen, The Crane offers an idyllic respite on the South East coast of Barbados.

The hotel is just under five miles from Grantley Adams International Airport and 13 miles from the island's capital of Bridgetown. Guests also enjoy complimentary WiFi in all guest rooms and around the resort — even on Crane Beach — and complimentary long-distance calls to most international destinations.

Whether your ideal holiday is one filled with swimming, sunbathing, culture, cuisine or entertainment, Barbados has it all.

The winner will be able to claim their prize any time in the next twelve months.

A holiday to Barbados is something very special. It doesn't matter if you are a family that wants to spend some quality time together, or if you want to go with your partner or friends, it's an island to let the good times roll.

The Crane Barbados is one of the most beautiful hotels in Barbados, with ocean views that are incredible. This is where our lucky prize winner will stay and relax.

The beach at the resort has white sandy beaches and you can spend hours there, just relaxing. If maybe adventure is what floats your boat then Barbados has so much on offer to suit every taste.

In association with Barbados Tourism Inc.

BARBADOS

Keep listening to Isle of Wight Radio, on 107 and 102FM, for details on how to enter

OUR TOP 5 MUST-DOS IN BARBADOS

1 One of the must-do things in Barbados is the Dolphin Experience. It is an unforgettable experience that you will remember for the rest of your life, but will it be because of the dolphins or because of the rum punch?

2 Diving: With so many wonderful diving locations on offer, you'll be spoiled for choice, there are lots of places to dive and even if you visit Barbados several times it is likely that you will never see all the diving sites that are available.

3 Fish are everywhere in Barbados so whether you are into fishing or simply want to see the fish then there is no better place than Barbados. Go scuba diving, snorkelling or even deep-sea fishing. There are dozens of companies that can offer you services for all these activities, so you'll find it easy to get out and enjoy yourself.

4 Turtles are a symbol of Barbados and swimming with these amazing creatures is one of the most amazing experiences that you can have. If turtles are at the top of your list then Turtle Beach on Carlisle Bay will be your number one choice.

5 You can't visit Barbados without a trip to try some famous rum. You will find rum in just about every bar in the world, but it isn't

until you visit Barbados that you will discover just how good it is! This Caribbean island has four distilleries where rum is produced. For those that want to check out some rum distilleries then the world-famous Mount Gay rum distillery is a good place to start.



The Crane
SINCE 1887 • BARBADOS



A RATHER BEWILDERING SPECTACLE

The New Carnival Company (NCC) has been working hard throughout the pandemic to deliver its National Lottery Heritage Funded project called 'A Rather Bewildering Spectacle'.

The title is drawn from an IW County Press record of the first Island carnival, which took place in Ryde in 1887. It was in honour of Queen Victoria's Jubilee, and it paraded through the town with masquerade costumes, decorated carts, marching bands and much merriment. It gained mixed reviews!

Today of course, carnival is part of the Island's rich cultural heritage, with at least 18 parades a year taking place across the Island prior to Covid. The NCC has partnered with Carisbrooke Castle Museum and oral history expert Lisa Kerley, to carry out reminiscence interviews with community members who have been part of that rich and colourful story.

The interviews have been professionally recorded and transcribed and will form part of an exhibition at the castle in the autumn, along with collected photographs and carnival memorabilia. A new website is to be launched, called Island Carnival Memories, planned as a legacy of the project, for people to visit and enjoy over the years to come.

Representatives of Ryde, Sandown, Yarmouth, Ventnor, Shanklin, St Helens and Newport carnivals have so far

taken part, as well as members of such legendary groups as Ventnor Comic Jazz band, The Wight Strollers, the Valvona family, the Newport Old Guard Scout Band, The Keystone Kops and The Ryde Buccaneers.

Children and young people have been a key part of this project too. Before Covid struck, six local schools* were helping to collect memories by hosting social gatherings on their sites, inviting community members inside, to share their stories with the children. The children had planned to re-invent some of the better-known traditions and perform them at the Isle of Wight Mardi Gras last July, sadly cancelled.

“Children and young people have been a key part of this project too”

But the show must go on! In August this year, during what would have been Ryde Carnival Week, the New Carnival Company hosted a carnival summer school at Oakfield Primary, working with children and families, TED

(Theatre Educational) and Theatretrain to bring back to life some of the stories. About 40 young performers played out mini-Buccaneers, Keystone Kops gone Krazy, King Kong and the Flintstones (representative of the Holiday Camps era), the Carnival Queens tradition, and much more. Even Queen Victoria herself attended, depicted as a 3-metre-tall puppet! We understand she was greatly amused!

It's not too late to get involved in Island Carnival Memories. The New Carnival Company is inviting anyone who has been part of the carnival scene over the years, as an organiser, a participant, or a visitor, to share their memories. The Facebook page Island Carnival Memories is waiting for your story!

Over the next three editions of the Beacon, we shall turn the spotlight on one of the amazing project contributors and share some stories and pictures from their personal archive. 📖

**Schools taking part in the pre-Covid story gathering programme were: Oakfield Primary School Ryde, St Francis Primary School Ventnor, Wootton Primary School, Barton Primary School Newport, Lanesend Primary School Cowes and St Helens Primary School*

Yarmouth
Guides c 1958
contributed by
Betty Coates-
Evans (sitting
centre)



Chris Slann
& Frankie
Goldspink
of the New
Carnival
Company at IW
Mardi Gras



Valvona Family
float, c1960
contributed by
Linda Morris



Yarmouth
Fire station
float c.1961
contributed by
Rodney Corbett
(seated front,
aged 18)



Shanklin
Carnival
Queens
c 1965
contributed
by Den Clare



2018: RAW
Samba at Ryde,
contributed by
Jo Treagus



SPOTLIGHT ON RYDE BUCCANEERS

Contribution from Alan Garnett

Alan joined the Ryde Buccaneers in 1964, second generation, after being introduced by a family member. He had to wait four months to 'get in', as in those days membership of the group was limited to 150! 'You had to turn up 3 out of the last 4 times or you got taken off and put back at the bottom of the list'. Alan, a blacksmith by trade, helped to make the 14-foot-high Galleon Float, even basing it around his own car one year.

Alan told the NCC 'Well, they (The Buccaneers) began in 1934. There was Archie Curville, Wally Diamond and SL Burdon. S.L Burdon had a parrot that used to sit on his shoulder, and you can imagine what parrots do down your back! Wally Diamond only had one leg, so he had a proper 'peg leg' made. Poor old Wally used to keep falling over on the Galleon, so I made him a thing that screwed down to the floor with a piece of pipe in it, and he used to

stick his leg in it. The first time we used it ...we all got off the galleon and there's a voice from the top saying 'Oi! I can't get me bl**dy leg out!'. And we all got up there to pull his leg out of this thing. Yeah, fun you know, they were fun times'

The Ryde Buccaneers raised thousands of pounds for local charities over the years. The group stopped doing carnivals in the late nineties - just before Pirates of the Caribbean. Alan was 'cut up' when it finished. He said 'It would have been cool for the kids to have been a pirate - and I would probably still be doing it now'.



Pics courtesy Alan Garnett



Supported using public funding by
**ARTS COUNCIL
ENGLAND**





News from Cowes West and Gurnard

by Cllr Paul Fuller

ISLAND PLANNING STRATEGY:

Consultation continues this month and I am looking forward to taking this out on the road. If you have queries, questions and suggestions on how the Island evolves for the next 15 years please join in! Details can be found here: www.iow.gov.uk/planthewright

BATHING WATER: Concerns continue to resonate regarding bathing water. Following ongoing pollution risk warnings for Cowes and Gurnard, a meeting was arranged with Southern Water. For details of please visit [www.environment.data.gov.uk/bwq/profiles/](http://www.environment.data.gov.uk/bwq/profiles/TRACK-AND-TRACING-TEST-KITS)

TRACK AND TRACING TEST KITS: Although Freedom Day has been and gone, many agencies insist that residents are regularly tested. Please note test kits for Track and Tracing are free and available from pharmacies.

TOWN AND PARISH COUNCILS: Changes were made to the IW Council's constitution which resurrected voting rights to the Isle of Wight Association of Local Council's member on the Corporate Scrutiny Committee. In addition, an IWALC member will join the IW Council's Planning Committee as a non-voting member.

READVERTISED

PLANNING

APPLICATIONS: A readvertised planning

application has been listed for land north of Gurnard Farm (7 dwellings). Ref: 21/01442/OUT. An Extraordinary Meeting to discuss this application was held last month by Gurnard PC.

DOG EXCLUSION ORDER: Gurnard Beach: Please note dogs are restricted from using the beach between the slipway at Shore Road and the water fountain to the east of the pumping station. For details visit: www.iow.gov.uk/azservices/documents/1390-Dogs-on-beaches-guide-WEB-VERSION-FORMAT-6may15.pdf

SOUTHERN INSHORE FISHERIES CONSERVATION AUTHORITY (SIFCA) MEETINGS: Issues discussed included sea bed damage caused by cruise liners and tankers. In addition DEFRA are to consult on marine sites, whilst concern was expressed from fishermen regarding 'fly shooting' from large European boats in the English Channel.

CONTACTING THE IW COUNCIL: Despite offices being closed, staff continue to work from home and can be contacted on 01983 821000. If you're not receiving timely responses to queries let me know and I will follow these up on your behalf.

☎ 289595/07935 090 835

✉ paulfulleriw@gmail.com

Freshwater Church Bells Ring Out Again

Church bells at Freshwater's All Saints' Church have rung out for the first time since the country went into lockdown.

In what's been described as a "special day", bell ringers from across the Island gathered at the church on Sunday August 1.

All six of All Saints' bells could be heard throughout the village — something which was said to have "delighted folk".

Tower captain, John Smith, said: "The ringers received very positive comments from parishioners — they were delighted to hear all six bells ring out in their majestic glory over Freshwater once again."

As well as John, other local ringers included David

Cobbett, Richard Fenton and Lesley McMahon-Hathway.

They were joined by visitors Graham and Viv Nobbs, who are members of the All Saints' Church, Ryde band.

The heaviest bell in the Freshwater Church 'ring' is the 'tenor' — it was cast in 1895 weighing in at around 16cwt.

All Saints, Freshwater band is once again on the look out for new ringers.

If you would like to have tuition, either at Freshwater or elsewhere, or you would just like more information about bell ringing, you can contact: Viv Nobbs.

Her number is 01983 530920 and her email is wp.public.relations.officer@gmail.com.



Month-Long Closure at Freshwater Post Office

By Oliver Dyer

Freshwater residents are set to be without a Post Office for at least a month as Tesco sets up shop in the village.

The supermarket giant is taking over from Co-Op at its base on Afton Road.

It means West Wight's biggest supermarket will temporarily shut while refurbishment works take place.

The Post Office, which also resides in the store, will remain, but will also have to

close in the short-term.

A spokesperson for Tesco said: "The Post Office will close for approximately four weeks while we fit out the new store."

"We apologise to customers for any inconvenience this may cause and we look forward to welcoming everyone to the new store once it's ready."

With the nearest Post Office nearly two miles away in Totland, the news will come as a blow to residents



Take a look
at Esplanade
Approved
Stock

Esplanade
Approved

Every used car is covered by the **Esplanade Approved** Used charter, where customer peace of mind is at its heart. When buying from Esplanade every used car comes with all of these unique benefits:

- ✔ **Comprehensive multi-Point Workshop Check**
- ✔ **2 Months Unlimited Mileage Warranty**
- ✔ **All service requirements met** - no need for another for at least 6 months
- ✔ **12 Months Roadside Assistance Cover** - Including mainland UK & Europe
- ✔ **Recall check** - any previous manufacturer recall requirements completed
- ✔ **Tyre check** - at least 3mm of remaining tread
- ✔ **Brake pads check** - no more than 70% worn down
- ✔ **HPI-cleared** - no outstanding finance or insurance write-offs
- ✔ **Expert Flexible Finance Advice** - access to a range of funders and products
- ✔ **Value My Car** - with our online part exchange valuation
- ✔ **5-Star Premium Valet**
- ✔ **A unique 30-day no quibble exchange**

We are confident that we can find the right car for you.

☎ 01983 523232 🌐 esplanade.co.uk



Sainsbury's Car Park Undergoes Refurb

By Iona Stewart-Richardson

Newport's Sainsbury's car park is set to undergo a refurbishment.

The works will begin this month and will be completed next year.

No further details have (at the time of going to print) been revealed about what day the work starts or is due to finish.

The company said Islanders will be "updated" as the work gets underway.

A Sainsbury's spokesperson said: "We're refurbishing our Newport store car park.

We'll have marshals on hand to minimise disruption for our customers while the works take place and we'll keep everyone updated on our progress.

"We'll have marshals on hand to minimise disruption for our customers while the works take place and we'll keep everyone updated on our progress."

Shoppers are instructed to check the information hub at the front of the store for updates.

who don't drive.

A branch can also be found more than two miles away in Yarmouth.

A Post Office spokesperson said:

"While the change over takes place, customers can use two alternative branches.

"Yarmouth (Quay Street) open 9am to 12pm Monday to Friday and Totland Bay operating from The Broadway Inn open 8.30am

to 1pm Monday to Friday and 9am to 11am on Saturday."

The supermarket is expected to change hands in the Autumn.

No exact dates have yet been confirmed for the start of works.



Music for Mental Health at The Breakfast Club

Monthly wellness and social groups are set to be held at Strings Bar and Venue, in Newport.

Starting from Friday September 3rd, the group will include a guided meditation with Bev Barber Therapy and music from Platform One student, Tyler Gorman.

Brunch is included, with vegan options available.


Organisers said: "We hope

to offer a safe and inclusive space to encourage and enable people to live well. We are promoting positive mental health and recovery through the use of music and art."

October's event will include guided meditation and an art as therapy session. Brunch included.

Tickets are £8 on the door. Visit thebreakfastclubm4mh.co.uk





F.ROBERT FRISE JEWELLERS

ESD.1952

Gifts & Fancy Goods for all occasions
Modestly priced Gold & Silver Jewellery
Silver Plate, Photo Frames, Pens, Trinket Boxes
Watches (Limit, Lorus, Sekonda & Timex)
Clocks (Antique & Modern) - Barometers - Sports Trophies

Engraving Service
(Metal & Glass - subject to suitability)
Free Engraving on items purchased on site (except glass)

Repair Service
Clock, Watch & Jewellery Repairs
Watch Batteries/Straps/Bracelets Supplied & Fitted
Watch Bracelet Alterations - Car Key Fob Batteries

KIMBERLEY HOUSE, HIGH STREET, FRESHWATER, IOW, PO40 9JX
TEL: 752418 FROBERTFRISE@AOL.COM
FROBERTFRISEJEWELLERS.COM - WIGHTIME.COM

You'll find us up the hill in the one-way High Street

Open 9am-4.30pm Mon-Fri



News from Cowes Medina

by Cllr Lora Peacey-Wilcox

CITIZENS ADVICE IW PUBLIC SURVEY:

Citizens Advice is interested to hear from people even if they have never used its services. It's completely anonymous and can be completed either online at www.citizensadviceiw.org.uk/forms/your-views-on-our-services, by phone on 0800 144 8848, or on a paper form available by request.

CAR PARKING: Not all nuisance parking is a police matter and should only be reported to the police if the vehicle is illegally parked: on zig zag lines, dangerously or in a way that would prevent emergency vehicles from accessing a road.

Abandoned vehicles should be dealt with by the council who can help trace owners, issue fixed penalty notices or arrange the removal vehicles if necessary. They can be reported online at www.gov.uk/report-abandoned-vehicle. For more info: www.hampshire.police.uk/advice/advice-and-information/asb/asb/antisocial-behaviour/nuisance-parking/

ANTI SOCIAL BEHAVIOUR: Types of anti-social behaviour can include:

- Noise – loud music, DIY at unsocial hours, loud and frequent parties, frequent visitors at unsocial hours
- Harassment and abusive behaviour causing distress and fear
- Vehicle nuisance – car meets at car parks, street racing, cruising

- Littering – dog fouling, fly tipping
- Anti-social street drinking, loud and abusive behaviour causing intimidation
- Unauthorised campfires, including wildfires and barbecues where not permitted
- Graffiti, property damage, vandalism
- It does not include:
 - Parking – when parked legally
 - Neighbours doing DIY at reasonable times
 - Groups of people in the street or park (unless they are abusive or causing damage)
 - Children playing
 - Noise caused by everyday living
 - A one-off party

If you see or experience any anti-social behaviour that may be causing a risk to yourself or someone else, or which you think may be a crime, then please report to the police by calling 101, or report online.

FIX MY STREET: Raise issues with road surfaces in your area using FixMyStreet (islandroads.com) these get logged onto a system with a report number that can get chased up.

EMPTY HOMES: If you suspect a home is empty or abandoned please contact me.

☎ 645765 ✉ lora08@sky.com

Play Equipment Fundraiser in Daughter's Memory

By Iona Stewart-Richardson

An East Cowes mother is hoping to raise funds for a new piece of play equipment in the town — in memory of her daughter.

Nikki Flux-Edmonds is hoping to raise £10,000 for the new piece of children's play equipment for the Bumblebee Park by next year.

The anniversary of Kezi's death on June 1 next year (2022) is a significant date for Nikki, it marks Kezi's life and death equalling the same amount of time.

When Kezi was a toddler she "adored" this piece of play kit and thought she was "king of the world" — being high up.

Nikki said: "I do visit it regularly but it would remind me of her. I plan to do anything I can to make this money, we have to make it. It would be so perfect to stand there on her anniversary day and say 'you are remembered'."

"It is partially for me but it is going to benefit the young



children in East Cowes on that estate, I have had so many letters from parents saying they are so excited because their children play there.

"I want to make her stand out again and be the name on people's lips."

The local authority is said to be behind the idea — but Nikki is waiting until they reach £5,000 so they can apply for planning permission.

Family friend Steven, who has just turned 18, also took on a skydive from Sandown Airport last month.

You can sponsor him by searching Stevens Skydive at [gofundme.com](https://www.gofundme.com).

Sunday Services Start at Mountbatten

A reflective communion service will now be held every Sunday at Mountbatten.

Mountbatten's Chaplain, Rev Julia Myles, will lead the service in Mountbatten Chapel, and it will be open to anyone of any denomination — or none.

Rev Myles said: "We want to create something that retains the traditional structure of a communion service and is also friendly and relaxed and that epitomises our values."

"Mountbatten is here for everyone whenever they need us, and we would love to use this Sunday service and mealtime to create a community, where all feel welcome and are inspired and encouraged."

"Poetry, art or music will often feature in a short reflection on the Gospel for the

week and we hope it will appeal to people who are looking for something a little different."

Sunday lunches will be available from Mountbatten Café afterwards, although these should be booked in advance by calling 01983 217341.



Lighting the way.

The all-new TUCSON Hybrid has landed.

On to better.

At Hyundai we know that progress only comes when you do things differently. The unique Parametric Jewelled Lights of the all-new TUCSON mean that it doesn't look like any other SUV. And with its innovative hybrid technology and advanced SmartSense safety features, we're lighting the way in more ways than one.

Discover more at hyundai.co.uk #lightingtheway

Leslies Hyundai
College Close, Sandown PO36 8EB
01983 405565 | <https://dealer.hyundai.co.uk/wight-motors-isle-of-wight>



Fuel Consumption figures for the TUCSON Hybrid, Mpg (l/100km): Combined 39.8 (71) to 50.4 (5.6), CO₂ emissions: 160 – 127 g/km. Figures shown are for comparison purposes only and are not intended to represent the actual performance of the vehicle. These figures do not reflect real life driving results, which will depend upon a number of factors including the accessories fitted (post-registration), variations in weather, driving styles and vehicle load. Hyundai 5 year warranty subject to Terms and Conditions.



War Graves to be Tidied Thanks to Royal Marines Association

By Iona Stewart-Richardson

War graves across the Isle of Wight will be tidied up - thanks to the Royal Marines Association on the Isle of Wight.

It's part of a 'Tidy Up War Graves' campaign which will run for 75 days and see 458 graves in 45 cemeteries across the Island tidied up. Nine of them are Royal Marines.

The scheme will mark the 75th anniversary of the Royal Marine Association part of "The Royal Marines Charity".

School children on the Isle of Wight are also being encouraged to produce one flower each to be displayed at Shanklin Chine on Remembrance Day.

The campaign starts on September 1 and will finish on Remembrance Sunday.

Royal Marines Association Branch Secretary Terry Goodwin said: "This is quite an ambitious project. It will require a lot of work over a long period of time. The work has to be carried out in a quiet and dignified way. More detail is shown below.

"There are a number of ways we can get this job done. This will depend on the amount of work required at each war grave. We can do it individually or in small groups. So once we know the scale of the work required, we can decide on each individual case."

Charity Chair Needed for Parkinson's IW

The Isle of Wight branch of Parkinson's is looking for a volunteer to take over from the present chairman.

Parkinson's is a degenerative neurological condition which can seriously affect so many people in so many ways, and



as yet there is no cure. The Isle of Wight has currently over 400 people living with Parkinson's and this fantastic committee works hard to make their lives a little easier.

If you can help please contact Josie Taylor at jlTaylor@parkinsons.org.uk.



News from Central Newport

by Cllr Julie Jones-Evans

I think we are all so relieved that the road works to improve St Georges Way are drawing to a close. Newport residents have to live day in day out with the amount of traffic flowing through the town and consequent road lay out improvements that inevitably come our way. Thank you for your forbearance. The Highways team are doing an island speed review this year and all of the councillors in Newport will be backing the pledge for 20 mph in the town centre and residential roads. Please get in contact with Holly Deacon if you can volunteer for Community Speed Watch in Newport . holly.deacon.17798@hampshire.pnn.police.uk

The crossing point at Lidl/Riverway is still a priority to resolve and Cllr Garratt and I continue to press for resolution here and of course at Mill Street. It's good to see that pedestrians are now being given greater priority in the Highway Code, so this should trickle down into road design.

Isle of Wight Day is again coming to Newport this month, Saturday 11th of September and will be based in St Thomas's Square and at Carisbrooke Castle where there is just £1 admission. Market Days will be running medieval themed activities and of course a market with local food and crafts.

The Saturday markets in St Thomas's Square are proving to be a great success with each week different activities and live music, please keep an eye out on social media outlets for forthcoming events.

☎ 521068 / 07886437688
✉ julie.jones-evans@iow.gov.uk

Peer
Networks

SOLENT
LOCAL
ENTERPRISE
PARTNERSHIP

Join over 100 business leaders

who benefitted from the Solent LEP's Local Business Network Programme (Peer Networks) in 2020

solentlep.org.uk



**Would you like an honest,
reliable and **AFFORDABLE**
police checked*
cleaner to clean your home?**

Typically

£13.50 per hour inc.

Then contact us at



TIME FOR YOU™
DOMESTIC CLEANING

As Featured on BBC 2's Working Lunch, Ch4's
'House Swap' & preferred cleaning supplier
to CH5's Cowboy Builders!

Telephone:
01983 623 123

iow@timeforyou.co.uk
www.timeforyou.co.uk/iow

*police checked cleaner upon request



NORTHWOOD
PRIMARY SCHOOL
www.northwoodpri.co.uk

**Little school...
..big smiles!**

**Spaces available
2021/22**

Ofsted: *Good*, May 2017

contact us for further details

01983 293392

**Funeral Plans from William Hall
Independent Funeral Directors**

**Planning ahead
for peace of mind**

A funeral plan provides peace of mind for you and those you care about. You make the arrangements in advance, specify your wishes and take care of the costs. We recommend funeral plans from Golden Charter, the UK's largest independent plan provider. With a Golden Charter plan you'll benefit from:

- Paying at today's prices for a service you may not require for many years
- A guarantee of nothing more to pay for our services
- A choice of a range of plans – with the option to personalise your own
- The reassurance that your wishes will be carried out, sparing your loved ones uncertainty and distress

Taking out a funeral plan is one of the most thoughtful decisions you could make.

To find out more about Golden Charter funeral plans from William Hall, please return the coupon below, phone us, or call in. REF: B 55

Mr/Mrs/Ms: _____ Initial: _____ Surname: _____

Address: _____

Tel no: _____

Send to: William Hall Independent Funeral Directors, Sunnybrow
Winford Road, Newchurch, Isle of Wight PO36 0JX **Tel. 01983 868688**



Golden Charter
Funeral Plans



£150 of M&S Vouchers

Awarded to every new Golden Charter Funeral Plan taken out between 1st September to the 30th September 2021 with William Hall Independent Funeral Directors, Sunnybrow, Winford Road, Newchurch PO36 0JX. www.williamhallfuneraldirectors.com



RAVEN
PRINT & DESIGN



**INTRODUCTION
OFFER
10%
OFF BANNERS**
QUOTE RAVEN10

**WIDE FORMAT
BANNERS
POSTERS
CANVAS PRINTS
DIGITAL WALLPAPER
VINYL STICKERS**

**DIGITAL PRINTING
LEAFLETS
BUSINESS CARDS
NCR
BOOKLETS
STATIONERY**

www.ravenprint.co.uk
studio@ravenprint.co.uk
01983 529044



— | LEGAL & FINANCIAL | —

Property Protection or Lifetime Trusts – Are They a Scam?

Glanvilles Damant Legal Services is often asked “Should I give my property to my children?” or “Should I put my property into trust to avoid tax or care fees?”

It's not surprising that with growing costs of care fees (£30,000 to £40,000+ per annum) and Inheritance Tax charged at a massive 40% most of us are keen to protect our hard earned assets to make sure we can pass at least something onto the next generation.

The ‘fear’ of losing everything to fund care or large tax liabilities for children is used as a marketing tool by unscrupulous companies to ‘sell’ what are often referred to as ‘Property Protection or Lifetime Trusts’. This service usually comes with a big price tag of around £3,000 to £5,000. Worryingly these companies are generally UK registered and often claim to have some legal or other qualifications.

The scheme that is ‘sold’ is that you set

up a trust during your lifetime and then transfer your home to the trust to benefit you whilst you are alive. It is claimed that as you technically no longer own the house (but the trust does so for you) the Local Authority can no longer get at this to fund future care. It is often also claimed to have other benefits such as avoiding the need for Probate, reducing Inheritance Tax and the like.

Unfortunately, these claims are false. The Local Authority can use the ‘deprivation of asset’ rules to challenge the transfer of the property to the trust and continue to treat it as if it was yours for assessing the need to pay for any care. In addition, unless you pay market value rent to stay in your home the property still will be part of your taxable estate for

Inheritance Tax. Indeed, in some cases it could still be taxed and lead to the loss of your new Residence Rate allowance so increase rather than decrease the tax due.

You are also giving your property away (whether you put it into a trust or give it directly to your children); there is no easy way of getting that asset back to you should you decide at a later date that you no longer want the trust to apply and it may lead to additional tax being paid to achieve this.

There are other far more effective and far cheaper ways of protecting assets from care fees and to minimise taxes payable on death. The best starting point is a Solicitor prepared Will. The Private Client Team at Glanvilles specialises in protecting our clients’ assets in the most efficient ways.



*"We don't just sell hearing aids,
we provide total hearing care"*

Wight *Sound-Hearing*

Registered Healthcare Professional
Colin Stockdale RHAD MSHAA AIHHP (Executive Member)

12 High Street, Shanklin PO37 6LB
Tel 01983 86 59 59

All Hearing Tests and Consultations are FREE

Latest Digital Testing & Fitting Equipment

Video Otoscope (see inside your own ear)

Try Before You Buy OR RENT a Digital
Hearing Aid (from £1 A DAY)

Free Home Visits
EVERY Brand of Hearing Aid
Available in the UK
Easy Payment Plans

VENTNOR MOBILITY CENTRE



Regain your independence...

Agents for scooters, rise/recline chairs,
stairlifts and all available mobility aids



FREE HOME SURVEY - We also Buy and Sell
- Can't come to us, we'll come to you!

Unit 4, Old Station Road, Off Mitchell Avenue,
Old Station / Tunnel, Ventnor PO38 1DX
Tel: 01983 855545

**PRE-BOOKED APPOINTMENTS ONLY
TO AVOID DISAPPOINTMENT**

Stay at home with quality care you can trust

We believe that **home** is where the heart is. We strive to **maintain your independence** so you can continue to enjoy the **comfort** and **security** of your own home.

Our experienced care teams will create a bespoke care plan to suit your needs; whether you require **personal care, companionship, domestic visits** or something else, our carers deliver care when, where and how you wish to receive it.

Contact your local branch today
for a free quote **01983 450 023**



www.apexprimecare.org

AWARD-WINNING CARE PROVIDER

offering bespoke services



Milford Del's philosophy is, 'we believe in providing care and support to a standard that we would want and expect for ourselves and members of our own family.'



An award-winning, family-run organisation that has a strong focus on ensuring clients receive high-quality bespoke person-centred care, delivered by a highly trained dedicated staff team.

Milford Del supports a variety of clients with varying levels of needs which includes people with autism or a learning disability, people with a mental health or physical health needs, and people who have an acquired brain injury.

They provide support to people in a variety of settings, which include two registered care homes, people who live in their own homes within the supported living facilities and people who live in their own homes around the Island.

Their support is tailored to the individual and this can be anything from supporting someone with their shopping to providing 3-1 support to enable a client to live in their own home.

Every day is different at Milford Del and their staff are passionate about ensuring all clients are able to achieve what they would like to achieve and to be able to live as independently as is possible.

This can be from having the confidence to get into a bath or visiting a shop for the first time to riding a horse,

going swimming, playing football, cooking, or learning to count.

Many clients have taken part in activities at Milford Del's 12-acre site called The Land. On The Land, there's a range of animals which includes, sheep, llamas, alpacas and goats. There's also a vegetable plot and poly tunnels.

Clients have helped with caring for the animals, growing vegetables and with tidying up the site.

The company has recently invested in an outdoor cabin which is based at one of the supported living sites. This will provide a space for clubs to meet. There's already a walking club on offer and now the restrictions have lifted, the company is speaking with clients about what other clubs they would like to attend. They have also bought an outdoor cinema screen for movie nights.

There has been a vast expansion in the company within the past couple of years, to the extent that the staff force has almost doubled in size. Milford Del's fantastic staff worked tirelessly throughout the multiple lockdowns to ensure clients, many of whom are extremely vulnerable were protected from the virus.

Their dedication to supporting clients and each

“On The Land there's a range of animals which includes, sheep, Llamas, alpacas and goats”

other has been outstanding. This has been recognised in that for a second year running, Milford Del has won the South England Prestige Award for Home Health Care Services of the year. This is such a well-deserved reflection of just how hard all the staff have been working and the company could not be prouder of all its workers and how well they have done to achieve this award again, especially under the unprecedented circumstances we have found ourselves in.

To recognise the hard work employees have undertaken, Milford Del has teamed up with local businesses to offer exclusive benefits to staff. Employees can now benefit from discounts at a couple of local eateries, stunning savings on a local seaside hotel, as well as a free membership from a local gym, including discounted sports massage and discounts on fitness classes.

Milford Del has also recognised the impact that Covid has had on staff wellbeing.

During the height of the pandemic, the company was

able to offer staff access to a counsellor however, they have now expanded staff support services to include a wellbeing app which is accessible for all staff members on their personal phones.

This includes many key features to assist in the physical, mental and emotional wellbeing of the staff, - 24/7 counselling support, legal advice, medical information, relationship and family advice and financial information.

Going from strength to strength and ever evolving, Milford Del has a new management structure in place to stabilise and secure what has become far more than ever could have been envisaged at the company's birth in 2001.

The company is constantly on the look-out for enthusiastic newcomers to the care industry and for anyone wanting a change in direction or location.

With the foundations now in place to go even further with supporting those that need it and in developing a knowledgeable, passionate and supported team of care staff, Milford Del welcomes anyone wanting to be part of this award-winning team to contact 01983 405321 or hr@milforddel.co.uk for the opportunity to really make a difference to someone.

CARE AT HOME

"With our Hands & Hearts, We Care"

RECRUITING NOW FOR CARERS

- BLOCK CALLS
- COMPETITIVE RATES
- GREAT WORK LIFE BALANCE

HIGH QUALITY CARE AND SUPPORT IN YOUR HOME WITH...

- DOMESTIC CARE
- SUPPORT WITH MEAL TIMES
- PERSONAL CARE
- BESPOKE PACKAGES

CH TRAINING

CH - TRAINING OFFERS A WIDE RANGE OF ACCREDITED COURSES FOR...

- SCHOOLS
- HOLIDAY PARKS
- CARE SECTOR
- ALL INDUSTRIES

THE ISLANDS LOCAL TRUSTED TRAINING PROVIDER

www.careathomeiow.com/ch-training.html



Innovation Centre, St Cross Business Park
Newport, Isle of Wight PO30 5WB

Tel: 01983 216400

Email: info@careathomeiow.co.uk

Website: www.careathomeiow.com



FYTbus is a scheduled volunteer-run bus service running every weekday morning serving the communities of Freshwater, Yarmouth & Totland.

We also provide subsidised direct transport to **St Mary's Hospital, Brookside Health Centre** and other medical appointments from our area.

On Saturdays we run a regular door-to-door shopping trip from West Wight to the major Island supermarkets.

For further details of all our services or to volunteer

01983 752917 (weekdays 09:45 to 12:30)

fytbustotland@gmail.com www.fytbus.org.uk

or find us on Facebook



Snowdrops and Rosemary

EXCEPTIONAL PEOPLE. EXTRAORDINARY CARE

Care in *your* Home. Tailored to *your* needs

Our wonderful team can offer you the support you want, when you need it, so you can continue living from the comfort of your own home. With help from as little as half an hour a week to up to several visits a day or 24 hour support.

We are a family run business, who employ all our carers locally. As our carers are local, we provide support to clients in the Cowes, Newport and West Wight areas.

Snowdrops and Rosemary, Gurnard Pines, Cockleton Lane

☎ 01983293340 ✉ contact@snowdropsandrosemary.co.uk

🌐 www.snowdropsandrosemary.co.uk



NOW HIRING



Shady Ladies

Often dismissed as frumpy and boring, some fabulous new varieties have been added to the hydrangea family. Flo Whitaker urges you to take a second look at these long-lived plants that offer much – and ask for little in return.

After decades languishing on the unfashionable bench, hydrangeas are deservedly back in the spotlight. They're particularly useful to gardeners as they bring colour when many summer performers have left the stage. Exciting new varieties are now available, (they're in the garden centres now!) By making a carefully considered selection you can have a succession of flowers from July-October. After flowering, they'll continue to give interest throughout winter. Faded hydrangea blooms have a subtle charm; turning to dusky shades as autumn approaches. Cut some for indoor decoration, or leave them in situ where they will become bleached and desiccated but still retain pleasing architectural shapes. Old flowerheads also have a practical use as they protect new shoots from frost, so, if you're a



member of the secateur-happy brigade, curb your urges until April before deadheading.

Hydrangeas are mostly pest and trouble-free. They seldom need radical pruning, but can be cut back by a third in spring if necessary.

An annual feed of general-purpose fertiliser and a thick mulch is probably the only maintenance they'll require all year, however, it's really important to give them the right environment, so choose the planting site carefully.

In the wild, hydrangeas are woodland plants; growing in dappled shade in soil that's enriched with moisture-retaining leaf mould. If you can replicate these conditions, they will thrive. Some varieties are more sunshine tolerant, providing the soil remains cool and damp, but never waterlogged.

Patio pots are challenging environments for hydrangeas. Be vigilant with the watering and avoid metal containers which will become hot in summer, warm the soil and stress the roots. In a heatwave, hydrangeas can flop alarmingly but will recover in cooler temperatures overnight. Plants such as hydrangeas and acers greatly prefer



rainwater to mains water – give them priority if your water butts are running low.

Some flowers have unstable colour pigments. Hydrangeas are notorious in this regard as they're super-sensitive to localised soil types and environmental conditions. Just because your neighbour gave you a cutting from their hydrangea doesn't necessarily mean your plant will produce blooms in identical shades.

It is possible to change the colour of hydrangea flowers by manipulating soil conditions. Pink flowers can be turned blue/lilac by regular applications of proprietary iron and aluminium compounds – but it's difficult to turn blue flowers pink as this requires adding an alkaline to the soil, (usually crushed lime). Hydrangeas, favouring acidic loam, seldom take kindly to this imposition and sulk. It's tempting to assume 'neutral' white varieties can be turned any colour. No. Bereft of colour pigments, they'll remain white forever – and good for them, frankly. Life is too short to be faffing about with a soil chemistry set and obsessing about flower colour. I'd rather be gardening. ☺



It is possible to change the colour of hydrangea flowers by manipulating soil conditions



HH
HELLY HANSEN

IDM
LIMITED

The South's largest supplier of Helly Hansen workwear branded to your business needs.

idmlworkwear.co.uk



Solent Pools & Hot Tubs

Whether it's a Swimming Pool, Hot Tub or Swim Spa, we'll have the answers

WE HAVE MOVED!

Due to demand we have moved to a brand new purpose built showroom on Unit 4 Lake Industrial Estate, off the Morrisons roundabout

WE ARE UP HERE

Tel: 01983 401800

www.solentpoolsandhottubs.co.uk



Lemlec Are Recruiting!

The growth of our business is lightning fast... And now we need bright sparks to join our expanding team!

WE ARE LOOKING FOR...

Experienced Plumbing/Heating Operations Manager

- 45k a year ● Company Car
- Company Pension

Gas Engineer x 1

- Gas safe registered ● NVQ Level 3
- Domestic or Commercial
- Full Driving License

To apply: Please send your cv and covering letter to

info@lemlecelectrical.co.uk

Or visit [Indeed.com](https://www.indeed.com) for more information



the

Live Wire

electric shop

Open Mon-Sat 8.30am-4.30pm

Bosch Hotpoint
Beko Phillips
Creda Samsung
Electrolux Whirlpool
Dimplex & more...

Vacuum Repair Service

Home Appliance
Spares

Cookers

Refrigeration

Home Laundry

Henry Vacuums

Microwaves



Orchard Street • Newport • Tel: 01983 522420

Now located in new larger premises
(behind Newport bus station)

NIXON AUTOMOTIVE SERVICES LTD.

We carry out all aspects of vehicle servicing and repair, with the latest servicing and diagnostic equipment.

AIR CONDITIONING
SERVICE

INTAKE CARBON
CLEANING

DPF CLEANING

01983 522033

nixonautomotive@outlook.com
2 DAISH WAY
NEWPORT
PO30 5XB

INTERIM SERVICE

£75

FULL SERVICE

£135

SERVICE PRICE IS FOR 2.0 Ltr
ENGINES AND UNDER.
PLEASE CALL FOR QUOTE ON
LARGER ENGINE VEHICLES
ALL PRICES ARE +VAT



NIXON

AUTOMOTIVE
SERVICES



STAG LANE MOTORS
Stag Lane, Newport
522443 / 525783

Special Offer MOT £39
(Class 4 cars & motorhomes only)

**SERVICING & REPAIRS TO
ALL VEHICLES (inc. HGV)**

**24 hr Breakdown
& Recovery**

Motorbikes MOT £25

**YOUNG
PLUMBING**
PLUMBING & HEATING SERVICES

**Tel: 01983 339671
Mb: 07967 225030**

www.YoungPlumbing.co.uk

**JOSH KERLEY
TREE SERVICES**

✓ All aspects of tree work undertaken
✓ NPTC Qualified and fully insured

FREE NO OBLIGATION QUOTES

TEL: 07875021682
Email: info@joshkerleytreeservices.co.uk
www.joshkerleytreeservices.co.uk

**Sign up to the
Beacon newsletter**

www.iwbeacon.com

STUDIOPHASE **Freeview**
freesat
sky cai

The Isle of Wight's local TV experts
Call 404406 studiophase.com

Why choose us?

- CAI approved • Friendly, reliable engineers
- We have over 30 years of local knowledge

SOS HANDYMAN

**FED UP PAYING OVERPRICED
TRADESMEN?**

T:07984 346635

THE ISLAND'S FAVOURITE...
isle of wight radio

'Topping in the Morning'
with Paul, Jamie and Hayley
every weekday from 6am

FM107 & 102
For the latest
breaking
Island news
iwradio.co.uk

FACEBOOK
[isleofwightradio](https://www.facebook.com/isleofwightradio)

TWITTER
[@iwightradio](https://twitter.com/iwightradio)

INSTAGRAM
[@iwightradio](https://www.instagram.com/iwightradio)

The Island's Favourites

ISLAND PAVING
(01983) 526667

PAVING AND BLOCK WALLING

- Concrete posts and gravel boards
(Made to order)
- Smooth and Rock finish

Deliveries island wide

Coastal Mobility
THE ISLANDS PREMIER MOBILITY SPECIALISTS

ALSO Wheelchairs • Bath lifts • Walkers • Adjustable beds & chairs • Accessories

FREE ISLANDWIDE DELIVERY

Great deals on mobility
scooters and
lift and recline chairs

SHANKLIN 866431
56 Regent Street

NEWPORT 533500
9 St Thomas Square

Mark Carter
Oil and Gas Engineer

Worcester Bosch Accredited Installer
Serving the West Wight and Cowes area

Tel: 619111 Mobile: 07771 557769

Gas Safe
Registered 28450

Ofttec Oil
Registered C12814

Boilers Installed, Serviced & Repaired ✓
Heating system repairs and upgrades ✓
Landlord Gas Certificates issued ✓
Agas & Rayburn Serviced ✓
Swimming Pool Boiler Services ✓
Fires, Cookers, Hobs & Ranges installed ✓
Power Flushes and system Cleanse ✓
Pre purchase House Inspection ✓
If it uses gas we can fix or replace it ✓
Natural Gas & LPG & oil ✓

SUDOKU

A simple process of logic is all that it takes to solve each puzzle in this game. Put the numbers 1 to 9 in each vertical column and each horizontal line. Each number must appear only once in each column and line and in each of the 3x3 boxes in the grid.

4	2	1						
				3	4			
			2			1	8	
					3	5	9	
			7	9		6		3
				1			2	
	9	2			6		1	8
3	8	7	5			9		
			9	2		3		

EQUALISER

Place a different arithmetical sign (add, subtract, multiply, divide) in each circle so that the total of each line across and down is the same. Perform the first calculation in each line first and ignore the mathematical law which says you should always perform division and multiplication before addition and subtraction.

	3		11	
2	○	5	○	1
	4		1	
3	○	6	○	11
	1		4	

QUICK CROSSWORD

CLUES ACROSS

- Prattles (anag.) (8)
- Wide street (6)
- Agitate (4)
- Horse (3)
- Metamorphic rock (6)
- Mental approach (8)
- Tufted beard (6)
- Drive away (6)
- Afternoon rest (6)
- Braids (6)
- Goose liver (4,4)
- Car fuel (6)
- Belonging to us (3)
- Land measure (4)
- African country (6)
- Written composition (8)

CLUES DOWN

- Edible tuber (6)
- Dexterous (6)
- Language (6)
- Torn (6)
- Niche (6)
- Follow (6)
- Matures (4)
- Story (4)
- Written material (4)
- of Man (4)
- Couple (4)
- Deprivation (4)
- Glacial period (3,3)
- Hallowed place (6)
- At sea (6)
- Recipe (anag.) (6)
- Appalled (6)
- Zodiac sign (6)

1	2		3		4		5		6		7	
							8					
9					10							
							11					
12		13		14								
15						16	17		18		19	
20	21		22		23		24		25		26	
					27							
28												
					29				30			
31												
					32							

CROSS CODE

Each number in the grid represents a different letter of the alphabet. You have three letters in the control grid to start you off. Enter them in the appropriate squares in the main grid, then use your knowledge of words to work out which letters should go in the missing squares. As you get the letters, fill in other squares with the same number in the main grid and control grid. Check off the alphabetical list of letters as you identify them.

	10		19	10	24	17	17	26	21		14	
1	3	18	3		10		26		24	23	26	9
	22		8	7	21	18	16	7	9		18	
19	16	24	9		11		10		11	24	19	9
10		18		17	16	8	21	16		12		21
24	7	19	11	3	10		16	5	7	24	19	16
8		16		18				7		13		8
9	19	10	26	20	16		8	24	19	26	6	16
26		16		9	19	16	16	18		8		10
19	26	15	16		11		24		7	25	18	4
	10		15	10	26	17	19	16	10		24	
18	3	8	25		21		16		25	3	2	8
	8		16	9	9	16	8	21	16		8	

ABCDEFGHIJKLMNOPQRSTUVWXYZ

1	2	3	4	5	6	7	8	9	10	11	12	13
14	15	16	17	18	19	20	21	22	23	24	25	26

SPEND MORE TIME OUTDOORS!

OUR SIMPLICITY SERIES FEATURES A RANGE OF CANOPIES, CARPORTS AND VERANDAS HAVING BEEN DESIGNED SPECIFICALLY TO ADD **STYLE & PRACTICALITY** FOR ALL OUR CUSTOMERS



- ✓ **FULL 10 YEAR GUARANTEE**
- ✓ **ALUMINIUM CONSTRUCTION**
- ✓ **RANGE OF COLOUR OPTIONS**
- ✓ **IMPACT RESISTANCE**

**WHITE
WINDOWS**

CALL 01983 523552 FOR A FREE ESTIMATE, OR VISIT
WWW.WHITEWINDOWS.CO.UK



**FRONTROW
GROUNDWORKS
ISLANDWIDE**

Fully insured
28 yrs experience
Reliable!

Fencing

Removed - Repaired - Replaced

All types of fencing undertaken

Quality materials used • FREE quotes



**Call Andy 07817 979501
or 01983 863348**

frgworks@icloud.com

**PLUS Landscaping • Turfing • Driveways • Pathways • Decking
• Drainage • Tree & Hedge maintenance & removals
• Footings • Garden walls • Guttering**



**Cherry Tree
shutters**
Changing your view

**20%
SALE
NOW
ON!**

01983 640174

www.cherrytreesutters.co.uk

Providing interior plantation shutters to cover any window style or colour including; Square, Rectangle, Circular, Arched, Bays and Patio Doors.



*Terms & Conditions Apply

Checkatrade.com

**0%
FINANCE
AVAILABLE**

WIN! Can you spot the differences?



COMPETITION



THIS MONTH'S PRIZES...



24 hour travel pass for up to 5 people
Courtesy of islandbuses.info



Cream Tea Box
Courtesy of Grace's Bakery
Tel: (01983) 632231
www.gracesbakery.uk



Pair of Saturday Shopper tickets
Courtesy of Solent Cruises
www.solentcruises



£25 Voucher
Courtesy of Marks & Spencer

NAME:

TEL:

ADDRESS:

POSTCODE:

E-MAIL:

- ☐ I am happy to be contacted by the sponsors for marketing purposes
☐ I would like to receive Beacon Magazine's weekly email newsletter with more competitions

PRIZE PREFERENCE (CHOOSE ONE ONLY):
1 ☐ 2 ☐ 3 ☐ 4 ☐

Closing date - 30TH SEPTEMBER 2021

Send your entries to: **IW Beacon Competition, 8-10 Dodnor Park, Newport, Isle of Wight, PO30 5XE**
When sending your entry to us you **MUST** ensure that you use the correct postage. Terms and conditions available on request.
Prizes must be claimed within 30 days of the draw date. Previous winners can be found on our Facebook and Twitter pages.
Winners will be contacted by phone.

Did you know...
You can take a photo on your phone and email your entry to win@iwbeacon.com.





FAIRLEE SERVICE STATION



MOT

3500kg GW including
Hi-Tops, Long Wheel
Base, Tipper & Lutons

CARS
£35

£50
CLASS 7



Live Booking Visit:

fairleeservicestation.com


online service and MOT booking now available

Call:



01983 525410

service reception

 Fairlee Service Station | Fairlee Rd | Newport | Isle of Wight | PO30 2EJ