

EAST AND
SOUTH WIGHT

Pick up your FREE copy

Beacon

September 2021



Festival **FEVER**

HISTORY
RYDE
TOWN
HALL

RECIPES
HONEY GRIDDLED PRAWNS
SPICED LOUKOUMADES

ISLAND STORY
A RATHER
BEWILDERING
SPECTACLE



Pay what you see,
leave at any time*

- Rolling 30 day contract
- 30 days' notice to cancel
- No exit fee

Annual price increases in April each year apply. Reconnection fee applies if leaving and re-joining within 12 months. Simple as that. See [WightFibre.com/FussFree](https://www.wightfibre.com/FussFree) for details.

A Different Kind of Broadband Full-fibre • Ultrafast • Future-proof

wightfibre
because we care

Order online at [wightfibre.com](https://www.wightfibre.com)
or call 01983 240240

OVER 55,
BRAND NEW
EXTRA CARE
SHARED
OWNERSHIP
APARTMENTS

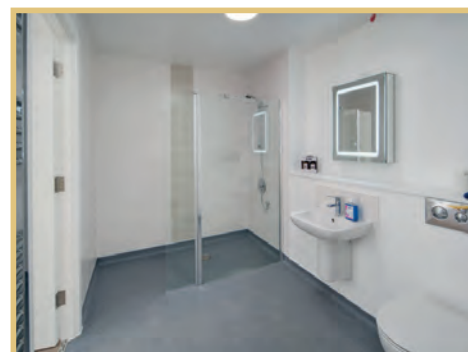


SHOW APARTMENT NOW AVAILABLE TO VIEW

All residents can be supported by the Wellbeing Team who are there to help everyone feel settled, supported and safe; this unique Wellbeing service can respond to your needs 24hrs a day on an unplanned care basis, enabling you to live independently in your own home.

To feel part of a community, there is access to activities every day such as:

- **Minibus outings**
- **Scheme shop**
- **Hairdressers**
- **Activities & Lunch Club**
- **Reception desk 7 days a week**
- **Communal lounge**
- **Laundry room**
- **Fitness room**
- **Dining room**



All apartments are built and equipped with emergency pull cord which connects you to 24 hours a day staff on site who can respond in a serious emergency for your peace of mind.



Welcome from the EDITOR

Who else is crossing their fingers for an Indian summer? I know I am.

Despite a lot of rain in recent weeks, I hope you've been able to have a great time out and about on our lovely little Island. Or even at home and out in the garden.

Speaking of the garden – now's the perfect time to start picking autumn berries and harvesting the last of your fruits and vegetables. Keep an eye on our website for loads of tips for gardening throughout the year – iwbeacon.com.

You'll find even more gardening tips and lots of other great features in this edition of Beacon Magazine, including fascinating Isle of Wight history, another local walk and some seriously tasty recipes (we know these are so popular with readers). How about some honey-griddled prawns, or perhaps enjoy a little taste of Greece with our recipe for spiced Loukoumades. Perfect for an evening barbecue during that Indian summer we're hoping for!

Amy Shephard

Editor amy.shephard@iwbeacon.com



5 History: Ryde Town Hall

7 Recipe: Honey Griddled Prawns

8 Win a Holiday to Barbados

9 Recipe: Spiced Loukoumades

11 Walking the Island: Walk the Wight Flat Walk

13 John Hannam meets Cathy Tyson

18-19 A Rather Bewildering Spectacle

20-27 News from your area

31-33 Gardens: Shady Ladies

34 Puzzle Page

35 Spot the Difference Competition



Beacon
MAGAZINE

IW Beacon Media Centre, 8-10 Dodnor Park, Newport, PO30 5XE

CALL US
01983 433112

FACEBOOK
[iwbeacon](https://www.facebook.com/iwbeacon)

TWITTER
[@iwbeaconmag](https://twitter.com/iwbeaconmag)

VISIT US
iwbeacon.com

INSTAGRAM
[@beaconiow](https://www.instagram.com/beaconiow)

EMAIL
hello@iwbeacon.com

totalsensemedia



**MILLENNIUM
WINDOWS LTD**

UPVC Doors & Windows, Conservatories and Fascias
& Gutter Installations on the Isle of Wight.

CALL US ON **01983 810 888**

millenniumwindowsiow.co.uk [facebook.com/millwindows](https://www.facebook.com/millwindows)



ISLAND ESSENTIALS
FRESH & HANDMADE
WITH FREE DELIVERY!



GRACESBAKERY.UK/SHOP - 01983 566868

THERE'S
**STILL
TIME**
TO APPLY!

SCHOOL-LEAVERS

NEW HORIZONS NEW BEGINNINGS

**IF YOU'RE NOT SURE WHAT TO DO NEXT, THAT'S OK.
AT HTP APPRENTICESHIP COLLEGE WE'LL HELP YOU
DISCOVER AND BUILD YOUR CAREER – IT'S WHAT WE DO.**

Not everyone knows what they want to do next in life – we get that.

Our flexible one-year courses can give you the opportunity to learn more about the direction you want to take. You can clear your head and get a fresh start with a range of engaging programmes, gaining real qualifications to help you choose and prepare for your next career adventure.

HTP is a very different education provider. With our smaller group sizes and more personalised tuition, you'll gain exciting new skills and start to plan your next move – whether it's continuing with Further or Higher Education, or into a job with an Apprenticeship. And what's more, our super-friendly team at Riverbank Campus in Newport will support you every step of the way.

Get on-board with HTP. Talk to us today and we'll help you expand your horizons.

TRY SOMETHING DIFFERENT

Our wide range of term-time courses includes:

- Health & Social Care
- Hospitality & Tourism
- Sport, Leisure & Outdoor Pursuits
- Creative Conservation
- Professional Cookery
- Business Administration
- Childcare & Education
- Horse Care & Riding
- Nail Technology

**CAN'T
DECIDE?**
Try our
**'SUBJECT
TASTERS'**

*Apply now.
It's not too late!*

No tuition fees • One-year programmes • Flexible modules • Excellent student support

Visit http.ac.uk • or call 01983 533926

The History of RYDE TOWN HALL

Opening primarily as a market hall in 1831, Ryde Town Hall has a rich history of holding extravagant balls, concerts, royal visits — and was also home to Ryde Borough Council.

The Grade II listed building was designed in a neoclassical style by James Sanderson of London — and built in coursed stone in 1830. The design featured an impressive tetrastyle portico leading to the entrance and Doric order columns. Iron railings at the front of the building were emblazoned with the town's coat of arms.

The clock tower wasn't added until 1869, when the area became a municipal borough following a significant growth in Ryde's population. An additional storey was also added to the east wing, designed by local architect, Francis Newman.

In the late 19th century — and in celebration of Queen Victoria's Diamond Jubilee — an organ was installed in the main hall at the cost of £1,000.

On June 6th 1933, a fire ripped through the building causing the roof to collapse. Several firemen from Ryde suffered from heat exhaustion and partial asphyxiation after battling the flames.

The building was subsequently restored and returned to use as Ryde Borough Council's headquarters.

Work to convert the first floor into a theatre, complete with balcony and Proscenium arch took place in 1991 and the building was used as such until its closure in 2005. In the years that followed, Ryde Town Hall hosted bands such as The Stranglers (in 2009). Although its time as a music venue was short lived, as the venue closed completely in April 2010 and sold to a developer three years later.

Since the sale, the development failed to progress and Ryde Town Hall fell foul to vandalism.



In the late 19th century — and in celebration of Queen Victoria's Diamond Jubilee — an organ was installed in the main hall at the cost of £1,000.

Ryde Town Council took on a three year lease on the building in 2020, with plans to raise funds to restore it — despite estimated repair costs totalling more than £2.4million.

The town council began discussions with the new owners but was issued with an ultimatum to decide what they wanted

to do by July of this year.

Following heated discussions, the town council voted in favour of taking on the run-down building in July. While its future is still uncertain, it is hoped one day Ryde Town Hall will return to its position within the community.

Councillor Phil Jordan said: “As we have seen in this town, private ownership does not work: these buildings fall into disrepair. The only future for a building of this nature is to bring it back into community use, with either public or community ownership. If we do not buy the building, its future is not very good.” ☹



In 1906, The King of Spain, Alfonso X visited Ryde. Here he's arriving at Ryde Town Hall by carriage.



ST HELENS SERVICE STATION

ALL MAKES SERVICE & DIAGNOSTICS

Factory level diagnostics & services for BMW, Volvo, Peugeot, Citroen and Renault

Genuine parts supplied for Jaguar, Land Rover and Porsche



VOLKSWAGEN • PEUGEOT • RENAULT • CITROEN • BMW • MERCEDES



**MOTs AVAILABLE FOR ALL
MAKES & MODELS**

Embankment Road, Bembridge PO35 5NS. Tel. 01983 872332 or 07920 224181

Walk the Wight

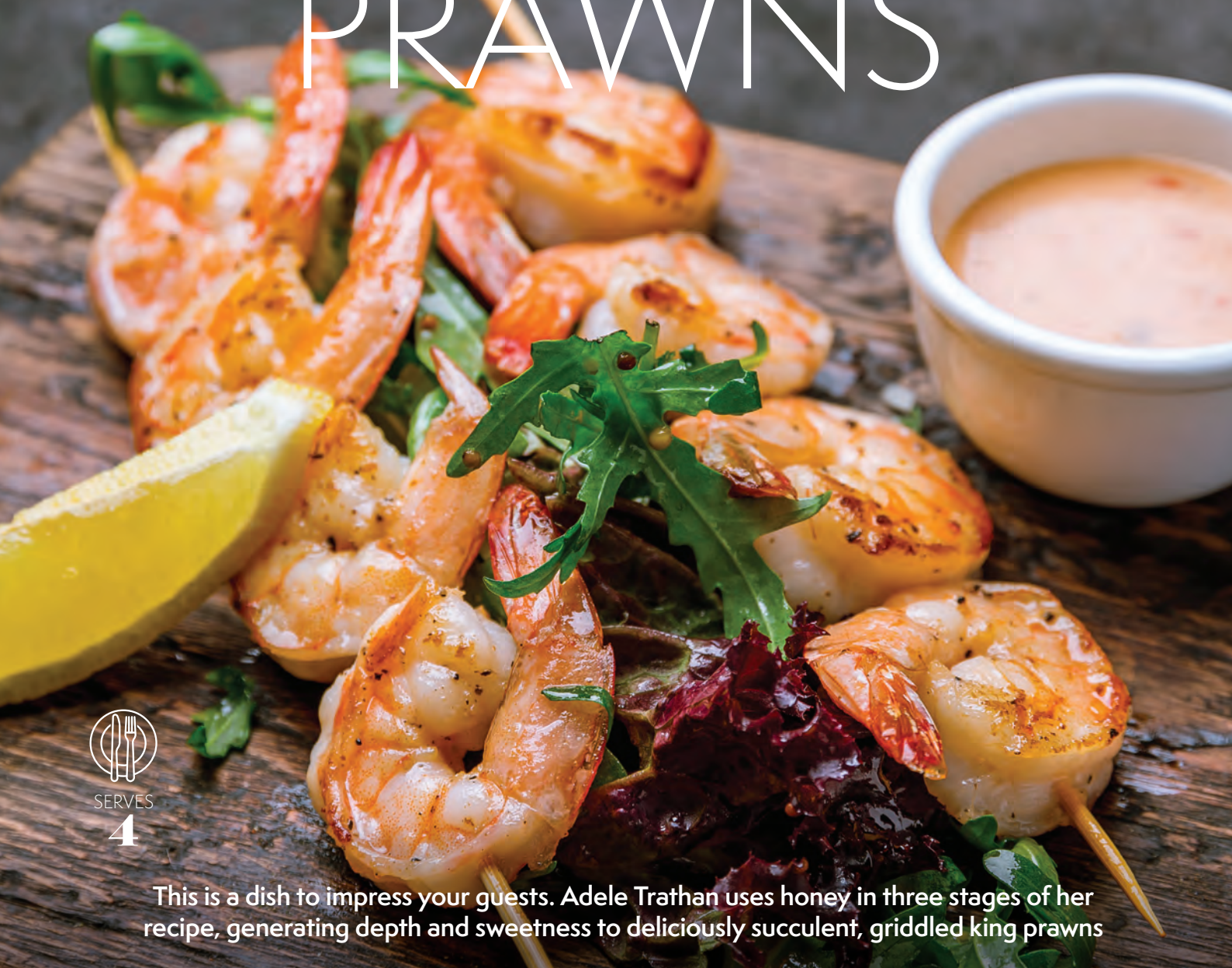
with  **Mountbatten**



Sunday 12th September

Register at mountbatten.org.uk

Honey Griddled PRAWNS



SERVES

4

This is a dish to impress your guests. Adele Trathan uses honey in three stages of her recipe, generating depth and sweetness to deliciously succulent, griddled king prawns

INGREDIENTS

700g (1lb 8oz) uncooked, king prawns with tails on
250ml (8½fl oz) boiled water
2 tsp salt
6 tbsp quality runny honey
1 handful of ice cubes
3 tbsp red wine vinegar
3 tbsp extra-virgin olive oil
3 spring onions, finely shredded
2 garlic cloves, crushed
1 small red chilli, finely sliced
Small bunch of flat-leaf parsley, finely chopped
A few sprigs of fresh oregano, finely chopped
1 sliced lemon

METHOD

1 Put the boiled water, salt and two tablespoons of the honey into a bowl and stir until the salt dissolves. Add the ice cubes and stir through to allow the mixture to cool quickly. Once cool, add the prawns and pop into the fridge for 30 minutes.

2 Remove from the fridge and discard the liquid. Pat the prawns dry using kitchen paper. Then, in a bowl, mix a further two tablespoons of honey in with the prawns.

3 In a separate large bowl combine the red wine vinegar and remaining

two tablespoons of honey with a whisk. Gradually add the olive oil, stirring with the whisk continuously until well blended, then stir in the onions, garlic and herbs.

4 Pre-heat a lightly oiled griddle-pan over a medium-high heat, add the prawns and cook for 2½ minutes on each side, until cooked through, pink and lightly charred.

5 Add the prawns to the honey, olive oil and herb bowl and toss well to coat the prawns. Serve on a platter with salad leaves and slices of lemon or slide on to skewers for individual portions. **B**

WIN A LUXURY HOLIDAY TO

Barbados



Fancy winning a break in one of the world's safest, and most luxurious destinations? Isle of Wight Radio has teamed up with Barbados Tourism to bring one lucky winner and their guest a week's luxury holiday on the beautiful Caribbean Island of Barbados.

Flying with British Airways, the winner and their guest will check in to Saint Philip's breathtaking Crane Resort. Isle of Wight Radio will look after you every step of the way, making sure you enjoy a truly memorable holiday in luxury.

Isle of Wight Radio will be broadcasting daily from the resort — so you can get a taste of what's up for grabs.

For over a century, the historic Crane Resort has surveyed the famous pink sands and turquoise waters of Crane Beach from its dramatic cliff-top perch. A Barbadian legend since 1887, and the oldest operating hotel in the Caribbean, The Crane effortlessly marries the old-world charm of its past to all the 21st century amenities and services expected by today's most discerning travellers.

From grand colonial styled suites featuring lush gardens, private pools and rooftop terraces, to an impressive array of world-class amenities and services including fitness facilities, kids club, spectacular cascading pools, exciting restaurants and of course, the Zagat rated

Zen, The Crane offers an idyllic respite on the South East coast of Barbados.

The hotel is just under five miles from Grantley Adams International Airport and 13 miles from the island's capital of Bridgetown. Guests also enjoy complimentary WiFi in all guest rooms and around the resort — even on Crane Beach — and complimentary long-distance calls to most international destinations.

Whether your ideal holiday is one filled with swimming, sunbathing, culture, cuisine or entertainment, Barbados has it all.

The winner will be able to claim their prize any time in the next twelve months.

A holiday to Barbados is something very special. It doesn't matter if you are a family that wants to spend some quality time together, or if you want to go with your partner or friends, it's an island to let the good times roll.

The Crane Barbados is one of the most beautiful hotels in Barbados, with ocean views that are incredible. This is where our lucky prize winner will stay and relax.

The beach at the resort has white sandy beaches and you can spend hours there, just relaxing. If maybe adventure is what floats your boat then Barbados has so much on offer to suit every taste.

In association with Barbados Tourism Inc.

BARBADOS

Keep listening to Isle of Wight Radio, on 107 and 102FM, for details on how to enter

OUR TOP 5 MUST-DOS IN BARBADOS

1 One of the must-do things in Barbados is the Dolphin Experience. It is an unforgettable experience that you will remember for the rest of your life, but will it be because of the dolphins or because of the rum punch?

2 Diving: With so many wonderful diving locations on offer, you'll be spoiled for choice, there are lots of places to dive and even if you visit Barbados several times it is likely that you will never see all the diving sites that are available.

3 Fish are everywhere in Barbados so whether you are into fishing or simply want to see the fish then there is no better place than Barbados. Go scuba diving, snorkelling or even deep-sea fishing. There are dozens of companies that can offer you services for all these activities, so you'll find it easy to get out and enjoy yourself.

4 Turtles are a symbol of Barbados and swimming with these amazing creatures is one of the most amazing experiences that you can have. If turtles are at the top of your list then Turtle Beach on Carlisle Bay will be your number one choice.

5 You can't visit Barbados without a trip to try some famous rum. You will find rum in just about every bar in the world, but it isn't until you visit Barbados that you will discover just how good it is! This Caribbean island has four distilleries where rum is produced. For those that want to check out some rum distilleries then the world-famous Mount Gay rum distillery is a good place to start.



The Crane
SINCE 1887 • BARBADOS

Adele Trathan loves these delicious Greek treats. They are similar to doughnuts or churros, but a healthier option as they are baked rather than deep fried, then soaked in a warm spiced

SPICED *Loukourmades*

INGREDIENTS

250g (9oz) strong white flour
7g sachet fast-action yeast
175ml (6fl oz) water
5g (1tsp) salt

For the syrup:

250ml (8½fl oz) water
250g (9oz) honey

3 cardamom pods, bruised
1 cinnamon stick
1 star anise
A handful of pistachio kernels,
optional to garnish

MAKES
20
PIECES

METHOD

1 Mix the flour, salt and yeast together in a bowl, then add the water and combine to make a dough. Knead the dough for at least 10 minutes, until smooth and stretchy.

2 Place the bowl in a warm place for one hour, or until the dough has doubled in size. When the dough has risen, divide it into 20 equally sized small balls.

3 Line two baking sheets with baking paper and place ten dough balls on each tray, allowing plenty of space between them. Preheat the oven to 200C/400F/gas mark 6.

4 Cover the dough balls with some oiled cling film and allow the balls to rise for a further 40 minutes. Remove the cling film and bake in the oven for 10-12 minutes, or until they turn golden brown.

5 In the meantime, place the water, honey, cinnamon stick, cardamom pods and star anise into a medium saucepan. Heat on the hob over a medium to high heat and simmer gently for at least five minutes. Remove from the heat and allow the spice to infuse until needed.

6 Remove the spices and drop the dough balls into the syrup, gently stirring to cover each one in a generous coating of syrup. Serve with a dollop of Greek yoghurt and an optional sprinkling of pistachio kernels. **B**

PEACE, LOVE & UNDERSTANDING

It's not long until the Isle of Wight Festival 2021 gets underway.

Organisers are encouraging festival goers to channel the harmonious vibes of the 1970 festival and celebrate peace, love and understanding — alongside fellow music lovers.

Fans should dress in their colourful rainbow best to commemorate coming together on the Island for the historic music festival.

Those in costume and those who want to witness a spectacle of colour should head to Strawberry Fields at 2pm on Saturday September 18, where the festival's best dressed will be crowned.

The winner will receive an exclusive backstage tour and champagne picnic.

A quartet of iconic names will perform on the Main Stage over the weekend, with Liam Gallagher as Friday's headliner; Saturday headliners Snow Patrol and David Guetta; and

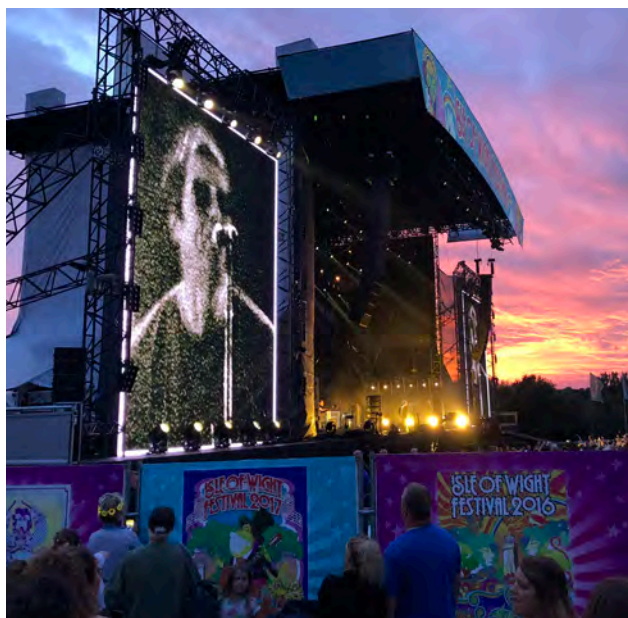
Sunday's headliner Duran Duran, who will close the festival.

Also performing over the festival weekend are Tom Jones and The Script plus All Saints, Apollo Junction, Are You Experienced? (Jimi Hendrix tribute), Becky Hill, Charlotte Jane, CHINCHILLA, Dylan John Thomas, Ella Henderson, Emily Burns, Example, Foor, Get Cape. Wear Cape. Fly, Imelda May, James, James Arthur, James Vincent McMorrow, Kaiser Chiefs, Lawson, Lightning Seeds, LONA, Lucy Blue, Lyra, Maisie Peters, Maximo Park, Megan McKenna, New Rules, Primal Scream, Razorlight, Rebecca Hurn, Roachford, Sam Feldt (live), Sam Fender, Scouting For Girls,

Seasick Steve, Shed Seven, Sigma (DJ set), Sophie Ellis-Bextor, STONE, Supergrass, The K's, The Manor, The Snuts, Wet Leg and You Me At Six.

The festival returns to Seaclose Park from September 16th to 19th.

Those attending will need to prove they've had both doses of a Coronavirus vaccine, or show a negative Covid test, as previously reported. ^③



WEEKENDS ONLY THROUGHOUT SEPTEMBER (Weather depending)

Departs Thetis Wharf, Cowes (next to the Chain Ferry) at **0930 hours** to Gunwharf Quays, Portsmouth. Returning at approximately **1700 hours** from Gunwharf Quays back to Thetis Wharf, Cowes. (Please listen out for announcements for exact time). **Adults £9 / OAPs £8 / Children £7.** Price does not include admission to attractions

**Booking is essential before travelling.
Call us on 01983 564602**



Sailings are subject to any COVID restrictions in place at the time.
FACE MASKS are advised when inside the boat

**Saving water
saves money,
cuts carbon
and protects the
environment.**

**It all makes
a difference.**

For more simple tips on
how to save water, visit:
southernwater.co.uk/save



from
**Southern
Water.**



Walk the popular 8-mile flat walk, from Sandown to Shide, in aid of Mountbatten, either on the day of Walk the Wight, or at any point throughout September with Walk the Wight Your Way.

The Flat Walk is popular with families, dogs (on leads) and people who would find the inclines of the main walks

challenging. It's also completely pushchair and wheelchair friendly.


You'll start at The Fairway in Sandown and head along the countryside cycle track towards Merstone, past farmland, through Blackwater and arrive, on the other side of the woodland, at Shide Trees in Newport. There's opportunities to stop for a picnic along the way if you wish. As well as a couple



Photo courtesy of Malc McDonald

of places to purchase a drink or an ice cream.

Walk the Wight 2021 will take place on Sunday, September 12th.

For more details about how to take part, head to mountbatten.org.uk/register-to-walk-the-wight. 



Distance: 8 miles Walk Time: 2-4 hours

Fuss-Free Contracts

From
£22.95
per month

**Pay what you see,
leave at any time***

- Rolling 30 day contract
- 30 days' notice to cancel
- No exit fee

Call us for FREE on **0800 785 1000** and our Friendly Island Sales Team will help you choose the right package.



Annual price increases in April each year apply. Reconnection fee applies if leaving and re-joining within 12 months. Simple as that. See WightFibre.com/FussFree for details.

Pay what you see, leave at any time.*

We are putting our money where our mouth is with fuss-free rolling monthly contracts!

No complicated contracts, no hidden fees, no upfront fee, no installation fee.

What are you waiting for? Order today!

- Installation within 5 to 10 days by our very own Island Engineers.
- Want to keep your telephone number? No problem, we will take care of it.
- Switch to our Different Kind of Broadband, broadband that just works!

wightfibre
because we care

A Different Kind of Broadband • Full-fibre • Ultrafast • Future-proof

A day to remember with

CATHY TYSON

Back in 1986 I went to see *Mona Lisa*, one of the big new movies of the year. The two big stars, Bob Hoskins and Michael Caine, certainly lived up to their reputations and I was also completely blown away by the big screen debut of Liverpool stage actor Cathy Tyson.

By John Hannam

Cathy went straight into my little black book, where I jot down the names of many people I would love to interview. My strike rate has been unexpectedly high but not in the case of Miss Tyson. It took me until 2001, after a few disappointments, but by then she was a household name following huge success in mega television series like *Band of Gold* and *Gold*.

Our interview, for IW Radio, was quickly arranged for the Nuffield Theatre, Southampton, where she was starring in a brand new play called *The Shagaround*. My request went in less than five minutes after I received the press release. I had finally made it — or had I?

When the exciting day arrived my wife, Heather, answered my mobile as we drove out of Newport. It was to say that Cathy was stuck in traffic in London and would not have time to see me before the show. It was arranged for a few days later. We went early morning shopping and on the way home Heather answered my mobile again and was told Cathy was not feeling well and, understandably, did not want to undertake an interview before the show. A forthcoming Bank Holiday Monday was my next selected opportunity.

I was teased by Heather who told me that, obviously, she just does not want to see you.

It was a quiet Bank Holiday in Southampton and I caught the Unilink



bus to the Nuffield and there was not a soul around in the theatre foyer. Then a door opened and in she walked. "You must be John. We can finally get together. Sorry this is the third time," said Cathy.

We disappeared into a very quiet and cosy office and 45 minutes later Cathy began to think about that night's show and I headed home.

Cathy, whose great aunt was a nun, was brought up in Liverpool by Margaret, her single parent mother. Life was not easy. She was very shy during her early school years and hated drama. That was to change at the local secondary school and later at the city's Everyman Theatre, when she appeared in a production called *In The City*. She was seen as an old lady who fed the ducks. There was a hint of what was to come when her character talked directly to the audience.

Her success at the Everyman led directly to the Royal Shakespeare Company at Stratford, which proved a culture shock.

"It seemed I was in the middle class area that I had rebelled against. At first, I was reluctant to embrace it with open arms. I'd come from Liverpool and still had lots of feelings about being black amidst a majority of white people and of being very defensive. I was only 18 and had so many feelings going on, as well as having so many things to learn."

She worked so hard with her theatre work. There were endless rehearsals playing parts and reading scripts. She

had missed so much of the social life that 18-year-olds enjoy. I was relieved to know she had since made up for it.

"I was so surprised to get that part. I was only 20 and it was my first movie"

What of that leading role of Simone in *Mona Lisa*, for which she won an award and enjoyed several nominations? "I was so surprised to get that part. I was only 20 and it was my first movie. I was so sure I wouldn't get the part I even left the script behind."

I had quickly realised that Cathy was a very intelligent actor and a deep thinker. It was no surprise to learn a few years later that she had given up the business for a while to go to university.

Her other successes have included *Grange Hill* and *Night and Day*. She can still be seen in various television dramas.

I think one of her greatest triumphs was when she appeared in the amazing live television show called *Liverpool Nativity*, set on the streets of the famous city. She played Herodia in an incredible production that was brilliantly hosted by the late Islander Geoffrey Hughes.

Before I left the Nuffield I had to confess to her that my thoughts on chicken farmers had changed since I saw *Band of Gold*. Sexy nylons and marigold gloves seemed so much fun! ☺





LEAVE YOUR BUSINESS IN SAFE HANDS WITH PERTEMPS

Here at Pertemps we have skilled candidates ready and waiting to hear from you...

We can fulfil your **recruitment needs** at short notice, and send you the very best people to help you in your hour/day/week of need.

INDUSTRIES WE RECRUIT IN:

- Bar Staff
- Waiting Staff
- Cleaners
- HGV Drivers
- Van Drivers
- FLT Drivers
- Warehouse Assistants
- Pickers & Packers
- Engineers
- Machine Operators
- Customer Service
- Administrators
- Accountants & Bookkeepers
- Event Staff

For all **Industrial and Driving** enquiries:
01983 533235
Joelee.Rowe@Pertemps.co.uk

For all **Office based, Technical and Event** enquiries:
01983 533235
Rhianon.Morey@Pertemps.co.uk

www.pertemps.co.uk

IS AROUND THE CORNER

OPPORTUNITY

Pertemps
the face of recruitment

Funeral Plans from William Hall Independent Funeral Directors

Planning ahead for peace of mind

A funeral plan provides peace of mind for you and those you care about. You make the arrangements in advance, specify your wishes and take care of the costs. We recommend funeral plans from Golden Charter, the UK's largest independent plan provider. With a Golden Charter plan you'll benefit from:

- Paying at today's prices for a service you may not require for many years
- A guarantee of nothing more to pay for our services
- A choice of a range of plans – with the option to personalise your own
- The reassurance that your wishes will be carried out, sparing your loved ones uncertainty and distress

Taking out a funeral plan is one of the most thoughtful decisions you could make.

To find out more about Golden Charter funeral plans from William Hall, please return the coupon below, phone us, or call in.

Mr/Mrs/Ms: _____ Initial: _____ Surname: _____

Address: _____

Tel no: _____

Send to: William Hall Independent Funeral Directors, Sunnyside
Winford Road, Newchurch, Isle of Wight PO36 0JX

Tel. 01983 868688

FPA
FUNERAL PLANNING AUTHORITY
REGISTERED

Golden Charter
Funeral Plans



£150 of M&S Vouchers

Awarded to every new Golden Charter Funeral Plan taken out between 1st September to the 30th September 2021 with William Hall Independent Funeral Directors, Sunnyside, Winford Road, Newchurch PO36 0JX. www.williamhallfuneraldirectors.com




Join over 100 business leaders

who benefitted from the Solent LEP's Local Business Network Programme (Peer Networks) in 2020

solentlep.org.uk





FRONTROW
GROUNDWORKS
ISLANDWIDE

Fully insured
28 yrs experience
Reliable!

Fencing

Removed - Repaired - Replaced
All types of fencing undertaken
Quality materials used • FREE quotes



Call Andy 07817 979501
or 01983 863348
frgworks@icloud.com

PLUS Landscaping • Turfing • Driveways • Pathways • Decking
• Drainage • Tree & Hedge maintenance & removals
• Footings • Garden walls • Guttering



Direct Cremation Specialists based here on the Isle of Wight for the Isle of Wight
The Island's only Independent Funeral Directors who are dedicated to this style of service
Affordable Direct Cremations. Separate the Cremation from the Celebration.

Unlike mainland providers, we can take your loved one into our care day or night without the need for travelling over by ferry, involving delays, distress and additional costs to prices quoted.

We pride ourselves by offering great value for money without any compromise on the care given to you and your loved ones.

We are proud to be the longest service Island Independent Family Funeral Directors.

Golden Charter
 Funeral Plans

**Direct
 cremations
 from £1,495
 Funeral Plans
 from £1,750**

Call 01983 632598 info@isleofwightdirectcremation.co.uk

www.isleofwightdirectcremation.co.uk

What is direct cremation?

Quite simply, it is an alternative to a traditional funeral. The cremation takes place unattended, giving you the freedom to celebrate your loved one at a time, place and venue of your choice.

How much does a direct cremation cost?

We have 2 options to choose from:-

1. Our 'Island Way' is £1,695.00 - this is for the direct cremation at the Isle of Wight Crematorium
2. Our 'Wessex Way' is £1,495.00 this is for a direct cremation at a mainland crematorium

We offer this option for families who would like to take advantage of savings that mainland crematoriums offer.

Can I get help with the costs?

Yes, if you are in receipt of benefits you may be entitled to a payment of up to £1,000 from the Department of Work and Pensions, so we advise contacting them to enquire.

What is the difference between Isle of Wight Cremation and a mainland provider?

We are based here on the Island, we can take your loved one into our care promptly and without the distressing delay of travelling over on the ferries.

We can meet you face to face at our Island offices. Or make all arrangements over the telephone.

Whereas mainland providers often courier the ashes back, we provide a more personal service by hand delivering them to you at your home, or you can come in and collect them at either of our offices. We are locals and understand our local community.

Do you offer prepaid direct cremation funeral plans?

Yes, we do and we use Golden Charter, the UK's market leader for providing prepaid funeral plans to Independent Funeral Directors. Your funds are safe and placed into the Golden Charter Trust. Recently we were awarded by Golden Charter as the best funeral planner for 2020 in the Southern England Region.

Alzheimer Cafés

Tel: 01983 220200

Email: info@alzheimercafeiw.org.uk

Website: www.alzheimercafeiw.org.uk



East Cowes Alzheimer Café

East Cowes Town Hall
York Ave, East Cowes PO32 6RU
First Tuesday of the month
2pm—4pm

Cowes Alzheimer Café

Football Club, Reynolds Close
off Park Road, Cowes PO31 7NT
Second Wednesday of the month
2pm—4pm

Totland Alzheimer Café

St Saviours Holy Family Centre
Weston Lane, Totland PO39 0HE
Third Wednesday of the month
2pm—4pm

Sandown Alzheimer Café

The Broadway Centre
1 Broadway, Sandown PO36 9GG
Fourth Wednesday of the month
2pm—4pm

Newport Alzheimer Café

IOW College, Medina Way
(Conference Rm, PINK Building)
Newport PO30 5TA
Last Thursday of the month
6pm—8pm

ACE7 Alzheimer Café

Carers IW, Riverside Centre
Newport PO30 2QR
2nd and 4th Tuesdays of the month
10.30am—12.00 o'clock

Ryde Alzheimer Café

All Saints' Church Hall
Queen's Road, Ryde PO33 3AF
First Friday of the month
11am—1pm

Ventnor Alzheimer Café



Newcomers very welcome

Booking only necessary when Covid-19 restrictions apply

An Alzheimer Café is a meeting place providing informal education about dementia, guidance and signposting to other services. We welcome people with dementia, their families, carers, professionals and anyone with an interest in dementia.

Ncl clinic
ISLE OF WIGHT

COVID-19 PCR Testing on The Isle of Wight

Same Day Antigen Fit-to-Fly £99



Reliable and efficient service on The Isle of Wight.

TESTS AVAILABLE 7 DAYS A WEEK

Our Services

- ✓ Fit-to-Fly from £99
- ✓ Test-to-Release from £149
- ✓ Return to the UK £40
- ✓ Antibody tests from £60
- ✓ Day 2 & 8 tests form £189

Why choose us

- ✓ Multiple processing times
- ✓ Pre-booked time
- ✓ Same day available
- ✓ UKAS accredited laboratory

T: 0330 025 2028

www.ncliniociow.co.uk

62 Crocker Street, Newport, Isle of Wight, PO30 5DA

*"We don't just sell hearing aids,
we provide total hearing care"*

Wight Sound-Hearing

Registered Healthcare Professional
Colin Stockdale RHAD MSHAA AIHHP (Executive Member)

12 High Street, Shanklin PO37 6LB
Tel 01983 86 59 59

All Hearing Tests and Consultations are FREE

Latest Digital Testing & Fitting Equipment

Video Oscope (see inside your own ear)

Try Before You Buy OR RENT a Digital
Hearing Aid (from £1 A DAY)

Free
Home Visits

EVERY Brand of Hearing Aid
Available in the UK

Easy Payment Plans

VENTNOR MOBILITY CENTRE



Regain your independence...

Agents for scooters, rise/recline chairs,
stairlifts and all available mobility aids



FREE HOME SURVEY - We also Buy and Sell
- Can't come to us, we'll come to you!

Unit 4, Old Station Road, Off Mitchell Avenue,
Old Station / Tunnel, Ventnor PO38 1DX
Tel: 01983 855545

**PRE-BOOKED APPOINTMENTS ONLY
TO AVOID DISAPPOINTMENT**

AWARD-WINNING CARE PROVIDER

offering bespoke services



Milford Del's philosophy is, 'we believe in providing care and support to a standard that we would want and expect for ourselves and members of our own family.'



An award-winning, family-run organisation that has a strong focus on ensuring clients receive high-quality bespoke person-centred care, delivered by a highly trained dedicated staff team.

Milford Del supports a variety of clients with varying levels of needs which includes people with autism or a learning disability, people with a mental health or physical health needs, and people who have an acquired brain injury.

They provide support to people in a variety of settings, which include two registered care homes, people who live in their own homes within the supported living facilities and people who live in their own homes around the Island.

Their support is tailored to the individual and this can be anything from supporting someone with their shopping to providing 3-1 support to enable a client to live in their own home.

Every day is different at Milford and their staff are passionate about ensuring all clients are able to achieve what they would like to achieve and to be able to live as independently as is possible.

This can be from having the confidence to get into a bath or visiting a shop for the first time to riding a horse,

going swimming, playing football, cooking, or learning to count.

Many clients have taken part in activities at Milford Del's 12-acre site called The Land. On The Land, there's a range of animals which includes, sheep, llamas, alpacas and goats. There's also a vegetable plot and poly tunnels.

Clients have helped with caring for the animals, growing vegetables and with tidying up the site.

The company has recently invested in an outdoor cabin which is based at one of the supported living sites. This will provide a space for clubs to meet. There's already a walking club on offer and now the restrictions have lifted, the company is speaking with clients about what other clubs they would like to attend. They have also bought an outdoor cinema screen for movie nights.

There has been a vast expansion in the company within the past couple of years, to the extent that the staff force has almost doubled in size. Milford Del's fantastic staff worked tirelessly throughout the multiple lockdowns to ensure clients, many of whom are extremely vulnerable were protected from the virus.

Their dedication to supporting clients and each

“On The Land there's a range of animals which includes, sheep, Llamas, alpacas and goats”

other has been outstanding. This has been recognised in that for a second year running, Milford Del has won the South England Prestige Award for Home Health Care Services of the year. This is such a well-deserved reflection of just how hard all the staff have been working and the company could not be prouder of all its workers and how well they have done to achieve this award again, especially under the unprecedented circumstances we have found ourselves in.

To recognise the hard work employees have undertaken, Milford Del has teamed up with local businesses to offer exclusive benefits to staff. Employees can now benefit from discounts at a couple of local eateries, stunning savings on a local seaside hotel, as well as a free membership from a local gym, including discounted sports massage and discounts on fitness classes.

Milford Del has also recognised the impact that Covid has had on staff wellbeing.

During the height of the pandemic, the company was

able to offer staff access to a counsellor however, they have now expanded staff support services to include a wellbeing app which is accessible for all staff members on their personal phones.

This includes many key features to assist in the physical, mental and emotional wellbeing of the staff, - 24/7 counselling support, legal advice, medical information, relationship and family advice and financial information.

Going from strength to strength and ever evolving, Milford Del has a new management structure in place to stabilise and secure what has become far more than ever could have been envisaged at the company's birth in 2001.

The company is constantly on the look-out for enthusiastic newcomers to the care industry and for anyone wanting a change in direction or location.

With the foundations now in place to go even further with supporting those that need it and in developing a knowledgeable, passionate and supported team of care staff, Milford Del welcomes anyone wanting to be part of this award-winning team to contact 01983 405321 or hr@milforddel.co.uk for the opportunity to really make a difference to someone.



A RATHER BEWILDERING SPECTACLE

The New Carnival Company (NCC) has been working hard throughout the pandemic to deliver its National Lottery Heritage Funded project called 'A Rather Bewildering Spectacle'.

The title is drawn from an IW County Press record of the first Island carnival, which took place in Ryde in 1887. It was in honour of Queen Victoria's Jubilee, and it paraded through the town with masquerade costumes, decorated carts, marching bands and much merriment. It gained mixed reviews!

Today of course, carnival is part of the Island's rich cultural heritage, with at least 18 parades a year taking place across the Island prior to Covid. The NCC has partnered with Carisbrooke Castle Museum and oral history expert Lisa Kerley, to carry out reminiscence interviews with community members who have been part of that rich and colourful story.

The interviews have been professionally recorded and transcribed and will form part of an exhibition at the castle in the autumn, along with collected photographs and carnival memorabilia. A new website is to be launched, called Island Carnival Memories, planned as a legacy of the project, for people to visit and enjoy over the years to come.

Representatives of Ryde, Sandown, Yarmouth, Ventnor, Shanklin, St Helens and Newport carnivals have so far

taken part, as well as members of such legendary groups as Ventnor Comic Jazz band, The Wight Strollers, the Valvona family, the Newport Old Guard Scout Band, The Keystone Kops and The Ryde Buccaneers.

Children and young people have been a key part of this project too. Before Covid struck, six local schools* were helping to collect memories by hosting social gatherings on their sites, inviting community members inside, to share their stories with the children. The children had planned to re-invent some of the better-known traditions and perform them at the Isle of Wight Mardi Gras last July, sadly cancelled.

“Children and young people have been a key part of this project too”

But the show must go on! In August this year, during what would have been Ryde Carnival Week, the New Carnival Company hosted a carnival summer school at Oakfield Primary, working with children and families, TE

(Theatre Educational) and Theatretrain to bring back to life some of the stories. About 40 young performers played out mini-Buccaneers, Keystone Kops gone Krazy, King Kong and the Flintstones (representative of the Holiday Camps era), the Carnival Queens tradition, and much more. Even Queen Victoria herself attended, depicted as a 3-metre-tall puppet! We understand she was greatly amused!

It's not too late to get involved in Island Carnival Memories. The New Carnival Company is inviting anyone who has been part of the carnival scene over the years, as an organiser, a participant, or a visitor, to share their memories. The Facebook page Island Carnival Memories is waiting for your story!

Over the next three editions of the Beacon, we shall turn the spotlight on one of the amazing project contributors and share some stories and pictures from their personal archive. 📖

**Schools taking part in the pre-Covid story gathering programme were: Oakfield Primary School Ryde, St Francis Primary School Ventnor, Wootton Primary School, Barton Primary School Newport, Lanesend Primary School Cowes and St Helens Primary School*

Yarmouth
Guides c 1958
contributed by
Betty Coates-
Evans (sitting
centre)

Chris Slann
& Frankie
Goldspink
of the New
Carnival
Company at IW
Mardi Gras

Valvona Family
float, c1960
contributed by
Linda Morris

Yarmouth
Fire station
float c.1961
contributed by
Rodney Corbett
(seated front,
aged 18)

Shanklin
Carnival
Queens
c 1965
contributed
by Den Clare

2018: RAW
Samba at Ryde,
contributed by
Jo Teagous



SPOTLIGHT ON RYDE BUCCANEERS

Contribution from Alan Garnett

Alan joined the Ryde Buccaneers in 1964, second generation, after being introduced by a family member. He had to wait four months to 'get in', as in those days membership of the group was limited to 150! 'You had to turn up 3 out of the last 4 times or you got taken off and put back at the bottom of the list'. Alan, a blacksmith by trade, helped to make the 14-foot-high Galleon Float, even basing it around his own car one year.

Alan told the NCC 'Well, they (The Buccaneers) began in 1934. There was Archie Curville, Wally Diamond and SL Burdon. S.L Burdon had a parrot that used to sit on his shoulder, and you can imagine what parrots do down your back! Wally Diamond only had one leg, so he had a proper 'peg leg' made. Poor old Wally used to keep falling over on the Galleon, so I made him a thing that screwed down to the floor with a piece of pipe in it, and he used to

stick his leg in it. The first time we used it ...we all got off the galleon and there's a voice from the top saying 'Oi! I can't get me bl**dy leg out!'. And we all got up there to pull his leg out of this thing. Yeah, fun you know, they were fun times'

The Ryde Buccaneers raised thousands of pounds for local charities over the years. The group stopped doing carnivals in the late nineties - just before Pirates of the Caribbean. Alan was 'cut up' when it finished. He said 'It would have been cool for the kids to have been a pirate - and I would probably still be doing it now'.



Pics courtesy Alan Garnett



Supported using public funding by
**ARTS COUNCIL
ENGLAND**





News from Sandown South

by Cllr Ian Ward

COMMUNITY BUSES – PLEASE USE THEM OR LOSE THEM:

No 22 and No 24 Sandown, Lake, Shanklin.

Volunteers drive community buses to provide a service for residents who would otherwise not get a bus service. During the pandemic lockdown community bus use reduced dramatically as you would expect. However, it is important that residents go back to using them because if demand remains low and passenger donations that pay for essential expenses reduce, the service becomes unviable and may have to stop. Currently the No 22 runs on Monday, Wednesday and Friday and the No 24 runs on Tuesday, Thursday, and Friday. Please support your community bus service and volunteers, please don't forget to leave a small donation of around £1 for a return trip.

DINOSAUR PARK – A TREMENDOUS OPPORTUNITY FOR SANDOWN:

I attended a meeting with the Chairman of the Dinosaur Isle Group and other members of the trust who explained their plans and actions to date. They are working with the Dinosaurier Parks to establish a park here in Sandown. This would be a huge regeneration boost for Sandown.

Dinosaurier has established a park in Lourinha, Portugal and the mayor of Lourinha has told the group that it is a huge success and has boosted the town's economy by around 60 million Euros overall and allowed them to build several new hotels to cope with additional 500,000 tourists attracted to the town.

There are currently no layout plans so people who are concerned about plastic dinosaurs and Browns are reacting to rumour and conjecture.

REGENERATION UPDATES:

1. Ocean Hotel – The IW Council has issued a Sec 330 enforcement order and is now awaiting a response from the new owners.
2. Pier Street Toilets – I have discussed the development of the site with the company taking over the site and they are waiting for the sale to be completed. It is their intention to lease the building.
3. High Street – It is really good to see that new shops and catering outlets are opening in Sandown. I have always said that Sandown needs and will benefit from commercial investment.

📞 403193/ 07772559093
📧 ian.ward@iow.gov.uk

The Latest on Bembridge's Controversial Love Lane Application

By Iona Stewart-Richardson

We could be waiting at least another six months for a formal decision about the controversial Love Lane application in Bembridge.

According to local councillor

Joe Robertson, the applicants submitting further “tree information” for their two-holiday cottages in protected woodland is the reason for the delay to the outcome.

A decision about the application — which has attracted more than 300 objections — will now be made by the Government's Planning Inspectorate.

It is after the Isle of Wight Council missed the deadline on 5 April, despite the application being validated by the local planning authority in February.

Councillor Joe Robertson, who has been a key figure in campaigning against the development, says the planning applicants submitted further information “because they didn't accept some of the objections raised by the tree officer.”

He said: “The Isle of Wight Council Planning Officers said yes you can submit further information and knowing that that would take it over the deadline all parties agreed to await the outcome of the Isle of Wight Council's decision — even though that would be after the deadline.

“I am told the applicants subsequently attempted to appeal for ‘non determination’ because the deadline had been missed. But the officers were clear



A decision about the application — which has attracted more than 300 objections — will now be made by the Government's Planning Inspectorate.

that it was agreed they would look at the new tree information if the applicant would wait for a decision — which appears not to have happened.”

Cllr Robertson says he has followed up with the planning department that an appeal has been lodged as it is not yet being shown on the Isle of Wight Council's website.

The Government website says appeals can take up to six months.

Councillor Robertson said: “I want to say the Isle of Wight Council has since published its report and what its decision would have been which is a refusal – we already know that and it has given some very concrete reasoning for that and the Planning Inspectorate will have sight of that report, so will not be starting with a blank sheet but lots of information including the report from the Isle of Wight Council.”

The local authority said it would have refused permission for the lodges, citing issues including the impact on the character of the area, on nearby properties, the ecology and trees.



Lighting the way.

The all-new TUCSON Hybrid has landed.

On to better.

At Hyundai we know that progress only comes when you do things differently. The unique Parametric Jewelled Lights of the all-new TUCSON mean that it doesn't look like any other SUV. And with its innovative hybrid technology and advanced SmartSense safety features, we're lighting the way in more ways than one.

Discover more at hyundai.co.uk/#lightingtheway

Leslies Hyundai

College Close, Sandown PO36 8EB
01983 405565 | <https://dealer.hyundai.co.uk/wight-motors-isle-of-wight>



Fuel Consumption figures for the TUCSON Hybrid. Mpg (l/100km): Combined 39.8 (71) to 50.4 (5.6). CO₂ emissions: 160 - 127 g/km. Figures shown are for comparative purposes only. Compare fuel consumption and CO₂ figures with other cars to be used for the same intended purpose. These figures may not reflect real driving conditions, which will depend upon a number of factors including the accessories fitted (over registration), variations in weather, driving styles and vehicle load. Hyundai 5 year Warranty subject to Terms and Conditions.

Devils Chimney Footpath Reopens

By Iona Stewart-Richardson

Access to Devils Chimney in Bonchurch has now reopened.

Isle of Wight Council contractors started working to improve and repair the narrow steps last month.

An Isle of Wight Council spokesperson said: "Devil's

Chimney is a popular path, so we keep a careful eye on this area, as the land is subject to movement.

"A timber flight of steps was beginning to slip and in the interests of public safety we regretfully closed them to the public so urgent repairs can take place."



Charity Chair Needed for Parkinson's IW

The Isle of Wight branch of Parkinson's is looking for a volunteer to take over from the present chairman.

Parkinson's is a degenerative neurological condition which can seriously affect so many people in so many ways, and as yet there is no



cure. The Isle of Wight has currently over 400 people living with Parkinson's and this fantastic committee works hard to make their lives a little easier.

If you can help please contact Josie Taylor at jtaylor@parkinsons.org.uk. Thank you.

Pay-To-Use Loos Open in Sandown

By Oliver Dyer

Pay-to-use toilets have opened in Sandown. The £78,000 loos, on St Johns Road, have only just opened after the pandemic caused a delay.

They offer a disabled accessible unit as well as a unisex cubicle, and are similar to the ones recently-installed at Shanklin.

Sandown Mayor Paddy Lightfoot said: "I am delighted to see these toilets completed, after the initial plans were laid pre-Covid.

However, this is just the start of modernising Council managed toilets, with future planned significant investment into Eastern Gardens and Yaverland sites.

"The Council

has worked toward providing modern, useable facilities that maximise availability whilst minimising running cost."

As well as coins, the toilets can be paid for via contactless payment methods, including contactless cards, Apple Pay and Google Pay etc.

It marks the start of significant investment in Sandown's public toilets, with the re-provision of Eastern Gardens toilets planned to take place over this winter.



CLOTHING ● FOOTWEAR ● HANDBAGS ● ACCESSORIES

Come and visit us in our new store,
you can find us at:
48 Regent Street, Shanklin PO37 7AA
You can also order online www.abiclothing.co.uk



News from Ryde Monktonmead

by Cllr Karen Lucioni



Welcome to September, this month we see the classic car show on Ryde seafront for two whole days the 11th and 12th of September. I am so looking forward to this event being back. Family-friendly free fun right on our doorstep. Please enjoy this event safely.

The deckchairs have been a huge success, it has been so wonderful to see the splash of colour and the residents and visitors using them, hasn't Ryde had a wonderful buzz this year.

I have been talking with Fields in Trust about Simeon Rec and now have the agreement on what this means for this green space, I would love to see more spaces protected like this one, I thank everyone who worked on this with me.

I continue to represent Ryde Monktonmead at Full Council both at Ryde Town and Isle of Wight Council, if there is anything anyone would like to discuss with me please give me a call to have a chat.

I held a meeting regarding the recent flooding, the Environmental Agency, Local Lead Flood Authority and Southern Water attended along with Island Line and many residents to discuss what had happened to many in the area.

I am also continuing that work, and

we have our next meeting on the 5th October at 5pm in the back room at the Simeon Arms. Thank you to Richard for allowing us to use this space.

I also have a map of all the drains looked after by Island Roads and the schedule of works they carry out to make sure these are clear. We need to get on top of this as it will really help if we have a lot of surface water again. On the day we had the flash flood we had 45mm of rain in an hour, if you would like to find out how you can help protect your property please let me know. I have various tools to help you achieve this.

I am in the process of creating you a website where all this information can be found easily which I am hoping will be up and running very shortly, I am hoping that you will sign up to digital newsletters as I am trying to be much greener so unless a paper copy is absolutely needed, I will be reaching out to you via the Beacon and email.

So the community group meeting and newsletter will now be called Ryde Monktonmead Matters because you do. The website when live will be www.karenlucioni.uk

See you all on the 5th October

☎ 07506 930109

✉ karen.iow@icloud.com

Roman Pottery Unearthed In Arreton Valley Project

By Iona Stewart-Richardson

Roman pottery is among the artefacts unearthed in a quarry project underway in the Arreton Valley.

A fascinating insight into Bronze and Iron Age life is being unearthed by Wight Building Materials and archaeologists from Southampton City Council Archaeology Unit.

The discovery of hundreds of artefacts has enabled experts to chart a legacy of intensive farming through the Bronze and Iron ages and has also raised the likelihood that the area is also hiding an as-yet undiscovered settlement.

The collection of pre-historic fragments are being dug up at Hale Manor Quarry from which sand and gravel is being carefully extracted by Wight Building Materials. The work is subject to planning conditions one of



which is to work closely with archaeologists to ensure the site's history – or at

least that not already lost to time and the plough over the centuries – is preserved.

Each piece is examined, catalogued and will in turn be presented to the Isle of Wight Museum Service. Because virtually all the pieces are fragments, they have little or no monetary value nor will they be suitable for display. But they are nevertheless helping to paint a picture of life in the Arreton Valley during the bronze and iron ages and also during Roman occupation.

Sunday Services Start at Mountbatten

A reflective communion service will now be held every Sunday at Mountbatten.

Mountbatten's Chaplain, Rev Julia Myles, will lead the service in Mountbatten Chapel, and it will be open to anyone of any denomination — or none.

Rev Myles said: "We want

to create something that retains the traditional structure of a communion service and is also friendly and relaxed and that epitomises our values.

"Mountbatten is here for everyone whenever they need us, and we would love to use this Sunday service and mealtime to create a community, where all feel welcome and are inspired and encouraged.

"Poetry, art or music will often feature in a short reflection on the Gospel for the week and we hope it will appeal to people who are looking for something a little different."

Sunday lunches will be available from Mountbatten Café afterwards, although these should be booked in advance by calling 01983 217341.



IDM LIMITED

The South's largest supplier of Helly Hansen workwear branded to your business needs.

idmlworkwear.co.uk

Bembridge Community Bus Launches

By Iona Stewart-Richardson

A new community minibus purchased by Bembridge Friendship Circle has been taken on its maiden journey.

The new £38,000 vehicle will now enter regular service proving a vital community link for numerous local groups.

The modified vehicle has been purchased following years of fundraising by the Friendship Circle supported by a £10,000 grant from the IW Foundation which is made up of the partners in Highway PFI company Island Roads.

Sheila Weedall, an outgoing Circle Trustee who has been among the team fundraising for the bus in recent years said: "It is such an exciting, feel-good moment for us and hopefully the community. We have held numerous events to keep the money coming in because it was clear

for some time that the old community bus was coming to the end of its useful life and becoming unreliable and more expensive to maintain.

"The bus is driven by volunteers and used by various community groups to ensure access to social events such as the twice-weekly Luncheon Club at the Cloisters and coffee mornings at the Village Hall. It is also used by Bembridge Primary School and the local scouts and football club so people young and old will benefit from the new bus."

As well as being more reliable, the new bus is also fitted with equipment to ensure it can be used by those with mobility issues.



IW Men Invited to Walk and Talk

By Iona Stewart-Richardson

Men on the Isle of Wight are invited to the Island's first-ever Men Only 'Walk and Talk' meeting this month.

Men Only, based in Ryde, have a mission to support men, whether they need some advice or just the space to talk.

It wants to create a peer group to help men prevent mental health problems proactively rather than reactively.

The team are also making walking buddies available on the walk to create a non-judgmental environment and opportunity to share and offload, which is the purpose of the Men Only Walk and Talk Sessions.



Lead volunteer Karl Menonly said: "We know how much easier it is for some men to open up when they are out and about. Peer-led guidance will allow them to hear how other men in similar situations have worked their way through the darkness."

You can come along to the first event on September 5th, 2pm at Puckpool Park, or head to menonlyiow.co.uk.



News from Sandown North

by Cllr Debbie Andre

We are now in September and hopefully enjoying sunny days and warm evenings. It has been good to see the island come alive with many visitors once again, enjoying all the beauty that we see on a daily basis.

It's fair to say that we have had some rather extreme weather in the last month or so which has caused some severe problems with both flooding and sewerage, especially around the Avenue Road area. We are having ongoing meetings with the management of Southern Water to address these issues. There are currently 3 places on the island where sandbags can be picked up if needed. Simeon Street Recreation Ground is the nearest one to Sandown.

I also thought that it might be useful for you to have the following information:

Who to call in the event of a flood

If you need to be evacuated because of severe flooding or damage, contact the police or dial 999. For general issues around flooding, contact the Isle of Wight Council on 823600.

If you believe the flooding is from a main river or the sea, contact the Environment Agency on 0345 988 1188. www.environment-agency.gov.uk

The Environment Agency also provides help on flooding issues via its Floodline: 0345 988 1188.

Please be aware of bogus tradesmen who may be cold-calling in such situations to offer repairs to your property.

At the time of writing there is still no date for the reinstatement of Island Line, but I am in touch with South Western Railway and will update residents via Facebook as soon as I have any news.

The Island Planning Strategy (IPS) is used to guide development on the island over the next 15 years and Sandown is very much a part of this. The plan is developed in consultation with the local community. It will deal with future needs and opportunities in relation to environment, community, growth, housing, economy, transport.

A Draft Island Planning Strategy has been prepared for public consultation and we are seeking your views on the document.

The consultation runs from 9am Friday 30 July 2021 and closes at 5pm on Friday 1 October 2021. I would urge everyone to take part and have your say at The Island Plan - Service Details (iow.gov.uk)

As always, I'm available if you wish to raise and discuss any issues. Please contact me on the above details and don't forget my monthly Councillor surgery, sometimes in conjunction with our local policing team, on the first Saturday of every month at Yaverland Sailing Club from 11am. Cllr Heather Humby is also available on 402024 or heatherhumby@sandowntowncouncil.gov.uk

☎ 07948 757977

📧 debbieandre4sandown@gmail.com

£10.00 OFF YOUR NEXT MOT



WESTRIDGE GARAGE

01983 562717 / 562160

westridgegarage.co.uk

Brading Road, Ryde, Isle of Wight, PO33 1AY

This voucher cannot be used in conjunction with any other reduced price MOT offer. (rrp £54.85). Exp 30th September 2021



Bembridge Parish Council

5 Foreland Road, Bembridge, PO35 5XN. Opening hours: Monday to Friday 9.30am - 12.30pm

☎ 01983 874160 ✉ clerk@bembridgepc.org.uk 🌐 www.bembridgepc.org.uk

Bembridge Friendship Circle

The new Friendship Circle Community Bus has arrived in the village and took its maiden journey on Wednesday 11th August. Expertly driven by Paul Wray with Mike Foreman navigating, Trustees Marianne Sullivan, Liz Mitchel and Liz White, secretary Karen Thomas and



treasurer Jacqui McDade were taken on a tour of the village!

The vehicle cost £38,000, so thank you to everyone who helped with the fundraising and IW Foundation for £10,000 grant funding. Special thanks to previous Trustees Margaret Donlon and Sheila Weedall who worked tirelessly for the Friendship Circle, especially the coffee mornings and organising the mystery tours for residents.

The first Coffee Morning will take place on Saturday 4th September alongside the Parish Councils Have Your Say Day, 10am to noon.



Winners of Bembridge Front Garden Awards

The Bembridge Front Garden Awards was kindly sponsored by Hose Rhodes Dickson, which enabled the purchase of a new Overall Winner's Trophy dedicated to a very special lady who over the years has worked hard to make Bembridge beautiful for all, Barbara Clough.

Members of our neighbouring Green Towns Group Sandown came along and judged the entries. After a very pleasant afternoon viewing all the gardens entered and much chat between them, they made their decision.

They were impressed with all the gardens

and made many lovely comments about the layout and structure plus the use of plants and landscaping, plus the thought given to planting which attracts bees and insects.

The winner of the Best Planted Front Garden was 3 The Ruskins.

The winner of the Best Sustainable Front Garden was 27 Steyne Road with Thalassa, Preston Road being Highly Commended.

The overall winner and receiver of The Barbara Clough Trophy went to 3 The Ruskins.

Hopefully we will be back with the Bembridge in Bloom next year.

Draft Island Plan Consultation Roadshow

Wednesday 1st September we will be holding a Draft Island Plan Consultation Question & Answer session with the IWC Planning Officers at 7pm in the Village Hall. This is your chance to discuss the new Island Plan contents with IWC Planning Officers

and you can have your say on how it will affect the future of Bembridge.

More information can be found at www.iow.gov.uk/planthewight or on our website www.bembridgepc.org.uk/planning/planning-applications-guidance/.

Bembridge Street Fair 2022

The Street fair will take place on Thursday 2nd June next year due to change in bank holidays because of the Queen's Platinum Jubilee and will be the commencement of a weekend of celebrations in the Village.

HAVE YOUR SAY!

Come along to the Village Hall on Saturday 4th September from 10am to 2pm and enjoy a coffee while having your say on the future of Bembridge.

Upcoming Council Meetings

Date	Meeting	Time	Venue
1st September	Planning Committee	5pm	Village Hall
2nd September	Green Towns Steering	2pm	Village Hall
15th September	Planning Committee	5:30pm	Village Hall
15th September	Full Council	7pm	Village Hall
23rd September	Environment & Neighbourhood Committee	6pm	Village Hall

Beach Cleans

Thank you to all the volunteers to helped with the August Beach Clean. The next one takes place on Saturday 25th September meeting at either Lane End slipway or The Point.



E-Newsletter

If you would like to sign up to receive a monthly E-Newsletter letting you know about local news, events and projects contact clerk@bembridgepc.org.uk

Full Council, Planning and other Committee Meetings are taking place remotely at present. For further details, agendas and documents, see the website www.bembridgepc.org.uk



Ryde Town Council

Town Hall Chambers, 10 Lind Street, Ryde, PO33 2NQ Tel: 01983 811105
Email: clerk@rydetowncouncil.gov.uk www.rydetowncouncil.gov.uk



BLOOMING MARVELLOUS!

Ryde in Bloom 2021 was bigger and better than ever before!

The competition was open to everyone in Ryde with any size of space to grow flowers – be it an acre, a garden, or a window box. There were two simple categories – Adult and Under 16 and the level of entries from everyone was fantastic.

We had some very generous prizes from our Ryde in Bloom 2021 partners Wightlink, Goodleaf Tree Climbing and Ryde Co-op, so we were able to give several prizes in each category.

The overall winners were:

ADULT CATEGORY: Francis Brett

UNDER 16 CATEGORY: Lucas Richards (14)

Special Achievement Award

Other winners included:

Joseph (10): U16 Most Creative Garden

Frida (8): U16 Best Miniature Garden

Jocelyn Eggleton: Best Creative Use of Small Space

Solent Inn: Best Commercial Space

Rosina Serman: Best Use of Difficult Space

For a full list of Ryde in Bloom Award Winners and photos of their gardens please see

www.rydetowncouncil.gov.uk

Ryde Town Councillor and Ryde in Bloom judge Karen Lucioni said:

"This year we wanted to get as much of the community involved in Ryde in Bloom as possible and we certainly achieved that! We've had so many entries from people who have never entered before and I was especially thrilled at the quality, inventiveness and obvious passion that have been shown."

Mike Fitt OBE, Ambassador and competition judge for South & South East In Bloom was delighted to have been involved once again:

"Having had the privilege of being invited to judge the competition entries for Ryde in Bloom 2021, it was wonderful to see the broad age range of those taking part, from local schoolchildren to those of more mature years. Each entry had its special qualities and there was no mistaking the effort put in by all entrants in greening and beautifying their patch."

"For example, this might be seedlings carefully nurtured, a miniature garden grown in a tray, wildlife friendly features created, courtyards and small spaces artfully planted, gardens expertly maintained, or a vegetable plot full of tempting garden produce. All worthy of congratulations, well done."

Stuart James, Marketing and Innovation Director at Wightlink, said:

"It is wonderful to see the colourful displays created by Ryde residents, it is obvious that a lot of hard work has gone into producing such colourful blooms. We are delighted to support Ryde in Bloom which has played an important role in encouraging people to spend time outdoors and benefit from the joy that gardening can bring. Congratulations to all the winners for creating such imaginative displays which have brightened up the town this summer."

Goodleaf Tree Climbing, said:
"We're so delighted to sponsor Ryde in Bloom. Anything to encourage people to get outside and engage with nature - it's so important for all our wellbeing. Congratulations to all the winners!"

Councillor Lucioni added further:
"Ryde is full of wonderful gardeners with very green fingers who have provided a fantastic splash of colour even if the sun hasn't shone as much as we would all have liked. I am very excited to see what Ryde can achieve in 2022."



Francis Brett



Lucas Richards



Joseph Sabine



John Vaughan



Frida Douglas



Maison Wetherick



Lyn Blackledge.
Award for
Transformation
& Community
engagement

Upcoming Council Meetings

Date	Meeting	Time	Venue
Monday 5th September	Full Council	7pm	Please see the agenda on our website three working days before the meeting for venue details
Tuesday 7th September	Planning Committee	6:30pm	Please see the agenda on our website three working days before the meeting for venue details
Tuesday 14th September	Finance Committee	7pm	Please see the agenda on our website three working days before the meeting for venue details
Thursday 16th September	Acquisitions and Commercial Management	2pm	Please see the agenda on our website three working days before the meeting for venue details
Tuesday 21st September	Facilities and Assets	2pm	Please see the agenda on our website three working days before the meeting for venue details
Tuesday 28th September	Planning Committee	6:30pm	Please see the agenda on our website three working days before the meeting for venue details



Nettlestone & Seaview Parish Council

Brian Jennings – Clerk, 2 Harrow Cottages, Nettlestone Hill, Seaview. PO34 5DU

☎ 07464 894216 ✉ clerk@nettlestoneandseaview-pc.gov.uk 🌐 www.nettlestoneandseaview-pc.gov.uk

EDDINGTON ROAD

The parish council has been concerned with the approach taken by the Isle of Wight Council to selecting a preferred bidder for the land in Eddington Road that has been earmarked for affordable housing – The Isle of Wight Council have chosen to move ahead with Southern Housing Group and a development of approximately 90-100 units, whereas the parish council had always favoured a locally supported scheme with Vectis Housing Association that looked to supply approximately 40-50 units.

The parish council will be arranging public meetings with Vectis Housing Association and Southern Housing Group so that members of the public can see first hand the differences in the schemes being suggested – keep an eye on the parish council website for details – www.nettlestoneandseaview-pc.gov.uk.

ADDITION TO THE PARISH COUNCIL

Following Michael Ward's decision to stand down at the previous council meeting, an election was called and the council now welcomes Cllr David Barry to its ranks. Cllr Barry is highly engaged in community issues already and is looking forward to channelling that enthusiasm into the decision making of the local authority.

NEW APPROACH TO GREEN SPACE MANAGEMENT

Cllr Hardie has been working with the Nettlestone and Seaview Community Partnership to trial a new approach to grounds maintenance for Parish Council maintained areas. Following the approach being championed by the 'Plantlife' charity, the council's green spaces will have tracks mowed into them for the rest of the summer but large areas will

be allowed to become established with natural flowers in an attempt to increase the biodiversity of our community. In line with the traditional method of 'Meadow Management' the grass will be cut back again in the autumn to control excess grass and weed growth – just as grazing animals would have done in the past.

PARISH COUNCIL MEETINGS

● Monday September 20th 2021 at 7pm, Location to be confirmed (please check the parish council website for updates)

As of May 7th 2021, meetings have to be held in a physical location and the council are ensuring this is done in a COVID-19 secure way. All meetings are open to the public and agendas available to view on the website seven days prior. All Councillors' details are available on the parish notice boards and the parish website or by contacting the Clerk.



Is there space for a child in your life?

Talk to our friendly team and find out how your adoption journey could start today

You can be:

A couple or single • LGBT+ • Already a family • Disabled • Claiming Universal Credit
Renting, mortgage or shared ownership homeowner

We have BAME children who need their forever family.
Financial support available for siblings and children with complex needs.

0300 3000 011 • adoptsouth.org.uk  

The Regional Adoption Agency for:





Shanklin Town Council

Town Clerk RFO: Ms S. Janeway LL.B (Hons) CILCA MSLCC, 65 Landguard Road Shanklin Isle of Wight PO37 7JX

☎ 01983 865101 ✉ shanklincouncil@hotmail.com 🌐 www.shanklincouncil.co.uk



Town Mayor's address

Councillor Chris Quirk, Shanklin Town Mayor

I am delighted to report that the safety buoys installed in the Bay to mark the speed limit area for powered craft are now

installed and so far, it appears the safety zone is being observed by most jet-ski users. The safety buoys are a zone governed by a local by-law imposing a 5 MPH speed limit on all powered craft, and requiring them to stay clear of bathers, fines can be imposed on those not observing the speed limit.

I can also report that whilst August might not be the most convenient time to carry out the work core sampling has taken place on the access to the beach above Shanklin Chine to determine the stability of the rock beneath the road prior to repair and upgrading of the retaining walls. We continue to press for early repair and reinstatement of the cliff paths between Luccombe and the beach. Work is also planned to stabilise the walls and embankments in Rylstone Gardens and Tower Cottage Gardens above Shanklin Chine, a recent rock

fall following heavy rain temporarily closed this iconic tourist attraction, but the blockage was quickly cleared and the Chine reopened.

The Town Council at two recent meetings has considered the installation of a new toilet facility at Chine Bluff including disabled facilities, and has confirmed that this work will proceed, hopefully to be available for next year's summer season. The future of the existing Art Deco toilet building at Chine Bluff is still under review.

On 14th August I had the opportunity to start the Dash and Splash event, a charity run between Shanklin and Sandown with competitors going over, through or wading/swimming round the groynes; the event was in support of Aspire Ryde and was supported by around 200 participants of all ages, including the Island's Triathlon Club members. Shanklin Rowing Club provided support at the start, and marshalling was provided by Shanklin and Sandown Rotary Club members. Thanks to Karen Eeles for organising the event. Unfortunately the annual Pier to Pier Swim between the Sandown Pier and Shanklin

Pier Apron, believed to be the oldest regular swimming race in the country, which had been scheduled for the previous week had to be cancelled at the last moment because of adverse weather and sea conditions, this event is unlikely to be rescheduled for this year but we look forward to its return next year.

The Chairman of Cycle Wight and myself met recently with Cllr Phi Jordan, the new Cabinet Member for Transport, to highlight the poor level of maintenance of the cycleways and footpaths in the area, raising the difference between the words of the IW Council regarding Active Transport and the reality of support on the ground. This also applies to our cliff paths, as the closed Appley Steps are in fact part of the National Coastal Footpath.

On 23rd July His Royal Highness Prince Michael of Kent presented the Isle of Wight Bus Partnership with their Queen's Award for Voluntary Service. The award was received on behalf of the volunteers by Alan Stott; the citation for the award was read by Deputy Lieutenant, Dr Nicholas England. Our Deputy Mayor attended the presentation.

**Best Regards Chris.
Shanklin Town Mayor (2021)**

The Island's
**CARPET & FLOORING
SUPERSTORE**



OPEN 7 DAYS A WEEK

MON - FRI 9AM - 6PM

SAT 9AM - 5PM

SUN 10AM - 4PM

01983 533150

12 Hurstake Road, Riverway Industrial
Estate, Newport, Isle of Wight,
PO30 5UU (next to Jollyes)

**NO DEPOSIT
INTEREST FREE
CREDIT**

Subject to status on orders over £495*

D&S Carpets are authorised and regulated by the Financial Conduct Authority. We are a credit broker not a lender - credit is subject to status and affordability, and is provided by Hitachi Capital (UK) PLC. Terms & Conditions Apply.

*Excludes fitting charges



www.dscarpets.co.uk

Rugs

Luxury
Vinyl Tiles

Wood &
Natural
Flooring

Vinyls

Carpets



Cherry Tree
shutters
Changing your view

20%
SALE
NOW
ON!

01983 640174

www.cherrytreeshutters.co.uk

Providing interior plantation shutters to cover any window style or colour including; Square, Rectangle, Circular, Arched, Bays and Patio Doors.



*Terms & Conditions Apply

Checkatrade.com

0%
FINANCE
AVAILABLE

Stay at home with quality care you can trust

We believe that **home is where the heart is**. We strive to **maintain your independence** so you can continue to enjoy the **comfort** and **security** of your own home.

Our experienced care teams will create a bespoke care plan to suit your needs; whether you require **personal care, companionship, domestic visits** or something else, our carers deliver care when, where and how you wish to receive it.

Contact your local branch today
for a free quote **01983 450 023**



www.apexprimecare.org



— | LEGAL & FINANCIAL | —

Property Protection or Lifetime Trusts – Are They a Scam?

Glanvilles Damant Legal Services is often asked “Should I give my property to my children?” or “Should I put my property into trust to avoid tax or care fees?”

It's not surprising that with growing costs of care fees (£30,000 to £40,000+ per annum) and Inheritance Tax charged at a massive 40% most of us are keen to protect our hard earned assets to make sure we can pass at least something onto the next generation.

The ‘fear’ of losing everything to fund care or large tax liabilities for children is used as a marketing tool by unscrupulous companies to ‘sell’ what are often referred to as ‘Property Protection or Lifetime Trusts’. This service usually comes with a big price tag of around £3,000 to £5,000. Worryingly these companies are generally UK registered and often claim to have some legal or other qualifications.

The scheme that is ‘sold’ is that you set

up a trust during your lifetime and then transfer your home to the trust to benefit you whilst you are alive. It is claimed that as you technically no longer own the house (but the trust does so for you) the Local Authority can no longer get at this to fund future care. It is often also claimed to have other benefits such as avoiding the need for Probate, reducing Inheritance Tax and the like.

Unfortunately, these claims are false. The Local Authority can use the ‘deprivation of asset’ rules to challenge the transfer of the property to the trust and continue to treat it as if it was yours for assessing the need to pay for any care. In addition, unless you pay market value rent to stay in your home the property still will be part of your taxable estate for

Inheritance Tax. Indeed, in some cases it could still be taxed and lead to the loss of your new Residence Rate allowance so increase rather than decrease the tax due.

You are also giving your property away (whether you put it into a trust or give it directly to your children); there is no easy way of getting that asset back to you should you decide at a later date that you no longer want the trust to apply and it may lead to additional tax being paid to achieve this.

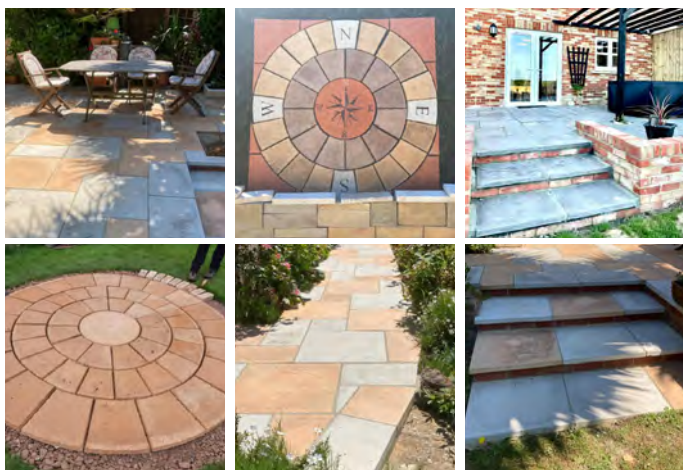
There are other far more effective and far cheaper ways of protecting assets from care fees and to minimise taxes payable on death. The best starting point is a Solicitor prepared Will. The Private Client Team at Glanvilles specialises in protecting our clients’ assets in the most efficient ways.



ISLAND PAVING (01983) 526667

PAVING AND BLOCK WALLING

- Concrete posts and gravel boards
(Made to order)
- Smooth and Rock finish



Deliveries island wide

BONCHURCH GARAGE

TEL: 854145

FAX: 854145

MOT's, Servicing and Repairs

Air conditioning recharge and servicing • Modern diagnostics undertaken

TEL 01983 854145 EMAIL bonchurchgarage@aol.com

Bonchurch Garage, Bonchurch Village Road,
Bonchurch, Ventnor PO38 1RG



Island Repointing

Natural Stone & Brick

Masonry Waterproofing & Brick Replacement

Damp Proof Course Installation & Cavity Clearance

Vacuum Grinding

Islandwide Coverage

Tel: 01983 531461 or 07715 397896

STUDIOPHASE

The Isle of Wight's local TV experts
Call 404406 studiophase.com

Why choose us?

- CAI approved
- Friendly, reliable engineers
- We have over 30 years of local knowledge

Freeview



freesat

sky cai



SPEND MORE TIME OUTDOORS!

OUR SIMPLICITY SERIES FEATURES A RANGE OF
CANOPIES, CARPORTS AND VERANDAS HAVING
BEEN DESIGNED SPECIFICALLY TO ADD **STYLE**
& **PRACTICALITY** FOR ALL OUR CUSTOMERS



- ✓ **FULL 10 YEAR GUARANTEE**
- ✓ **ALUMINIUM CONSTRUCTION**
- ✓ **RANGE OF COLOUR OPTIONS**
- ✓ **IMPACT RESISTANCE**

**WHITE
WINDOWS**

CALL 01983 523552 FOR A FREE ESTIMATE, OR VISIT
WWW.WHITEWINDOWS.CO.UK

**Would you like an honest,
reliable and **AFFORDABLE**
police checked*
cleaner to clean your home?**

Typically
£13.50 per hour inc.

Then contact us at



TIME FOR YOU™
DOMESTIC CLEANING

As Featured on BBC 2's Working Lunch, Ch4's
'House Swap' & preferred cleaning supplier
to CH5's Cowboy Builders!

Telephone:
01983 623 123

iow@timeforyou.co.uk
www.timeforyou.co.uk/iow

*police checked cleaner upon request





Shady Ladies

Often dismissed as frumpy and boring, some fabulous new varieties have been added to the hydrangea family. Flo Whitaker urges you to take a second look at these long-lived plants that offer much – and ask for little in return.

After decades languishing on the unfashionable bench, hydrangeas are deservedly back in the spotlight. They're particularly useful to gardeners as they bring colour when many summer performers have left the stage. Exciting new varieties are now available, (they're in the garden centres now!) By making a carefully considered selection you can have a succession of flowers from July-October. After flowering, they'll continue to give interest throughout winter. Faded hydrangea blooms have a subtle charm; turning to dusky shades as autumn approaches. Cut some for indoor



decoration, or leave them in situ where they will become bleached and desiccated but still retain pleasing architectural shapes. Old flowerheads also have a practical use as they protect new shoots from frost, so, if you're a member of the secateur-happy brigade, curb your urges until April before deadheading.

Hydrangeas are mostly pest and trouble-free. They seldom need radical pruning, but can be cut back by a third in spring if necessary. An annual feed of general-purpose fertiliser and a thick mulch is probably the only maintenance they'll require all year, however, it's really important to give them the right environment, so choose the planting site carefully.

In the wild, hydrangeas are woodland plants; growing in dappled shade in soil that's enriched with moisture-retaining leaf mould. If you can replicate these



GRASS CUTTING
OFFERING A GRASS CUTTING AND
STRIMMING SERVICE
ALL SIZE LAWNS
RIDE ON MACHINES FOR LARGER AREAS
ONE OFF OR RETURN
CUSTOMERS WELCOME
TRIM & STRIM
07593 501 975

A&E BUILDERS
BUILDING & CONSTRUCTION SERVICES
No job too big or small!
EMAIL: aebuilders71@gmail.com
• DRIVEWAYS • PATIOS • EXTENSIONS
• SPECIALIST BRICKWORK
• ORANGERIES • PORCHES
• DRAINAGE & HOUSEHOLD MAINTENANCE
Call for a no obligation free quote from a builder with
over 30 years experience. Public liability insured.
TEL. 07525700980/01983 883787

**N.P.WALDEN
ELECTRICAL**
Domestic Installer
 **NICEIC Registered**
01983 401078
07702 905876
nicholas.walden@btinternet.com

**YOUNG
PLUMBING**
PLUMBING & HEATING SERVICES
Tel: 01983 339671
Mb: 07967 225030
www.YoungPlumbing.co.uk

**ACER
RECLAMATION**
WANTED: Red & Yellow Bricks,
Floorboards, Flagstone, Welsh Slate,
Chimney Pots & Stained Glass.
Call: 01983 565761
or 07973 745428
www.acerreclaimed.co.uk

 **JOSH KERLEY
TREE SERVICES**
✓ All aspects of tree work undertaken
✓ NPTC Qualified and fully insured
FREE NO OBLIGATION QUOTES
TEL: 07875021682
Email: info@joshkerleytreeservices.co.uk
www.joshkerleytreeservices.co.uk


Vehicle Body Repair
If you've damaged your vehicle,
or someone else has, did you
know you **DON'T** have to use
the repairer your insurance
company suggests?
You could save money and they
can help towards the excess too.

SW Vehicle Body Repair - Giving you choice
Call 866 413 today

THE ISLAND'S FAVOURITE...
**isle of
wight
radio**

'Topping in the Morning'
with Paul, Jamie
and Hayley
every weekday
from 6am
FM107 & 102
For the latest
breaking
Island news
iwradio.co.uk
 **FACEBOOK**
[isleofwightradio](https://www.facebook.com/isleofwightradio)
 **TWITTER**
[@iwightradio](https://twitter.com/iwightradio)
 **INSTAGRAM**
[@iwightradio](https://www.instagram.com/iwightradio)
**The Island's
Favourites**


**Double glazing specialists
now offer finance**
 **UPVC**  **Doors**  **Conservatories**  **Windows**

 **Trinity Windows IOW**
For more information, call Gary and
the team at Trinity Windows IOW
without delay, on **07912 934 679**.
www.trinitywindowsiow.co.uk
We accept card payments
   

conditions, they will thrive. Some varieties are more sunshine tolerant, providing the soil remains cool and damp, but never waterlogged.

Patio pots are challenging environments for hydrangeas. Be vigilant with the watering and avoid metal containers which will become hot in summer, warm the soil and stress the roots. In a heatwave, hydrangeas can flop alarmingly but will recover in cooler temperatures overnight. Plants such as hydrangeas and acers greatly prefer rainwater to mains water – give them priority if your water butts are running low.

“It is possible to change the colour of hydrangea flowers by manipulating soil conditions”

Some flowers have unstable colour pigments. Hydrangeas are notorious in this regard as they're super-sensitive to localised soil types and environmental conditions. Just because your neighbour gave you a cutting from their hydrangea doesn't necessarily mean your plant will produce blooms in identical shades.

It is possible to change the colour of hydrangea flowers by manipulating soil conditions. Pink flowers can be turned blue/lilac by regular applications of proprietary iron and aluminium compounds – but it's difficult to turn blue flowers pink as this requires adding an alkaline to the soil, (usually crushed lime). Hydrangeas, favouring acidic loam, seldom take kindly to this imposition and sulk. It's tempting to assume 'neutral' white varieties can be turned any colour. No. Bereft of colour pigments, they'll remain white forever – and good for them, frankly. Life is too short to be faffing about with a soil chemistry set and obsessing about flower colour. I'd rather be gardening. ③



A simple process of logic is all that it takes to solve each puzzle in this game. Put the numbers 1 to 9 in each vertical column and each horizontal line. Each number must appear only once in each column and line and in each of the 3x3 boxes in the grid.

4	2	1						
				3	4			
			2			1	8	
					3	5	9	
			7	9		6		3
				1			2	
	9	2			6		1	8
3	8	7	5			9		
			9	2		3		

Place a different arithmetical sign (add, subtract, multiply, divide) in each circle so that the total of each line across and down is the same. Perform the first calculation in each line first and ignore the mathematical law which says you should always perform division and multiplication before addition and subtraction.

Diagram illustrating two sets of numbers arranged around two circles. The first set of numbers is 3, 11, 2, 5, 1, 4, 3, 6, 11, 1, 4. The second set of numbers is 11, 1, 4, 3, 6, 11, 1, 4.

CLUES ACROSS

1. Prattles (anag.) (8)
8. Wide street (6)
9. Agitate (4)
10. Horse (3)
11. Metamorphic rock (6)
12. Mental approach (8)
15. Tufted beard (6)
16. Drive away (6)
20. Afternoon rest (6)
24. Braids (6)
27. Goose liver (4,4)
28. Car fuel (6)
29. Belonging to us (3)
30. Land measure (4)
31. African country (6)
32. Written composition (8)

2. Edible tuber (6)
3. Dexterous (6)
4. Language (6)
5. Torn (6)
6. Niche (6)
7. Follow (6)
12. Matures (4)
13. Story (4)
14. Written material (4)
17. ---- of Man (4)
18. Couple (4)
19. Deprivation (4)
21. Glacial period (3,3)
22. Hallowed place (6)
23. At sea (6)
24. Recipe (anag.) (6)
25. Appalled (6)
26. Zodiac sign (6)

1	2		3		4		5		6		7	
							8					
9					10							
							11					
12		13		14								
15							16	17		18		19
20	21		22		23		24		25		26	
					27							
28												
					29				30			
31												
					32							

Each number in the grid represents a different letter of the alphabet. You have three letters in the control grid to start you off. Enter them in the appropriate squares in the main grid, then use your knowledge of words to work out which letters should go in the missing squares. As you get the letters, fill in other squares with the same number in the main grid and control grid. Check off the alphabetical list of letters as you identify them.

	10		19	10	24	17	17	26	21		14	
1	3	18	3		10		26		24	23	26	9
	22		8	7	21	18	16	7	9		18	
19	16	24	9		11		10		11	24	19	9
10		18		17	16	8	21	16		12		21
24	7	19	11	3	10		16	5	7	24	19	16
8		16		18				7		13		8
9	19	10	26	20	16		8	24	19	26	6	16
26		16		9	19	16	16	18		8		10
19	26	15	16		11		24		7	25	18	4
	10		15	10	26	17	19	16	10		24	
18	3	8	25		21		16		25	3	2	8
	8		16	9	9	16	8	21	16		8	

ABCDEFGHIJKLMNOPQRSTUVWXYZ

1	2	3	4	5	6	7	8	9	10	11	12	13
14	15	16	17	18	19	20	21	22	23	24	25	26

WIN! Can you spot the differences?



THIS MONTH'S PRIZES...



24 hour travel pass for up to 5 people
Courtesy of islandbuses.info



Cream Tea Box
Courtesy of Grace's Bakery
Tel: (01983) 632231
www.gracesbakery.uk



Pair of Saturday Shopper tickets
Courtesy of Solent Cruises
www.solentcruises



£25 Voucher
Courtesy of Marks & Spencer

NAME:

TEL:

ADDRESS:

POSTCODE:

E-MAIL:

- ☐ I am happy to be contacted by the sponsors for marketing purposes
☐ I would like to receive Beacon Magazine's weekly email newsletter with more competitions

PRIZE PREFERENCE (CHOOSE ONE ONLY):
1 ☐ 2 ☐ 3 ☐ 4 ☐

Closing date - 30TH SEPTEMBER 2021

Send your entries to: **IW Beacon Competition, 8-10 Dodnor Park, Newport, Isle of Wight, PO30 5XE**
When sending your entry to us you **MUST** ensure that you use the correct postage. Terms and conditions available on request.
Prizes must be claimed within 30 days of the draw date. Previous winners can be found on our Facebook and Twitter pages.
Winners will be contacted by phone.

Did you know...
You can take a photo on your phone and email your entry to win@iwbeacon.com.



BARNEY'S TYRES

WE CAN FIT YOUR TYRES AT WORK OR HOME!

Tyres at great prices!

**PUNCTURES & WHEEL BALANCING
OPEN 8-5.30 MON-FRI & 8-1 SAT
NO NEED TO BOOK, JUST TURN UP!
ACCEPT CASH & CARD PAYMENTS**

**UNIT 4, ALBANY CENTRE, FOREST ROAD, NEWPORT,
ISLE OF WIGHT PO30 5NB**



**BUDGET, MEDIUM & BRANDED RANGE TYRES FOR CARS,
VANS, 4X4'S & TRAILERS
ALL AVAILABLE AT LOW PRICES!**

**Mobile fitting service - call &
book a convenient time for you**



T: 01983 529061

M: 07788 817511