

CENTRAL AND
WEST WIGHT

Pick up your FREE copy

Beacon

July 2021

ISLAND STORY
CARNIVAL
ISLAND

WALK
THE DICKENS
LITERARY WALK

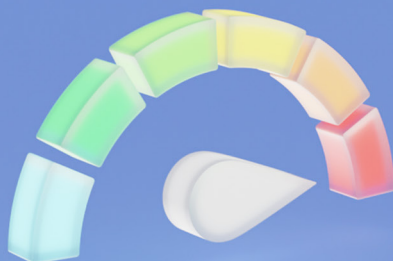
RECIPE
CARAMELISED
RUM BANANAS

Summer Time

Time to sit back and unwind

900Mb –
Yes Please!

Ultrafast broadband only
from WightFibre



wightfibre
because we care

Order online at [wightfibre.com](https://www.wightfibre.com)
or call 01983 240240

A Different Kind of Broadband Full-fibre • Ultrafast • Future-proof



GreenMeadows
Independent Island Living

**COLWELL ROAD
WEST WIGHT**

OVER 55,
BRAND NEW
EXTRA CARE
SHARED
OWNERSHIP
APARTMENTS



SHOW APARTMENT AVAILABLE TO VIEW SOON

All residents can be supported by the Wellbeing Team who are there to help everyone feel settled, supported and safe; this unique Wellbeing service can respond to your needs 24hrs a day on an unplanned care basis, enabling you to live independently in your own home.

To feel part of a community, there is access to activities every day such as:

- **Minibus outings**
- **Scheme shop**
- **Hairdressers**
- **Beauty treatment room**
- **Reception desk 7 days a week**
- **Laundry room**
- **Fitness room**
- **Communal lounge**
- **Dining room**

All apartments are built and equipped with emergency pull cord which connects you to 24 hours a day staff on site who can respond in a serious emergency for your peace of mind.

For more information regarding shared ownership,
or to speak with someone regarding renting,

**Please call 0808 1699788 or
email newhomes@hrdiw.co.uk**



In Partnership with





Welcome from the EDITOR

Summer is here. And with it comes long evenings, al fresco dining and days down by the beach. It's my favourite season.

We hope the weather is kind and gives us lots of time outdoors, as I think we all need it.

If you're heading to the beach, why not pack a copy of Beacon in your bag to read while you relax. We've filled this edition with some seriously tasty recipes, a look back at Isle of Wight carnivals of times gone by and a new Dickens literary walk in Ventnor, as well as lots of news, events and much, much more.

We hope you enjoy it.

Amy Shephard

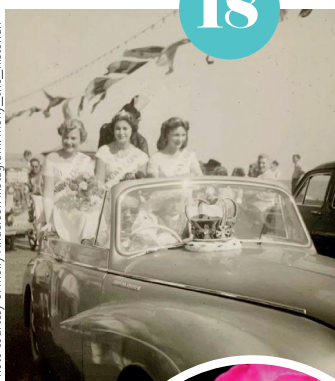
Editor amy.shephard@iwbeacon.com

Picture by Ruth Crafer

7



Photo courtesy of Molly Anderson Instagram: molly_the_historian



18

5

Walking the Island:
Dickens Literary Walk

7

When John Hannam
met Annette Badland

9

Recipe: The Ultimate
BBQ Hot Dog

11

Recipe: Caramelised Rum Bananas

12-13

The Entertainment Guide

14-15

Eddie Minghella Turns 100

18-19

Carnival Island

22-25

News from your area

33

Gardens: The Floral Queen

35

Spot the Difference competition



33

Beacon
MAGAZINE

IW Beacon Media Centre, 8-10 Dodnor Park, Newport, PO30 5XE

CALL US
01983 433112

FACEBOOK
iwbeacon

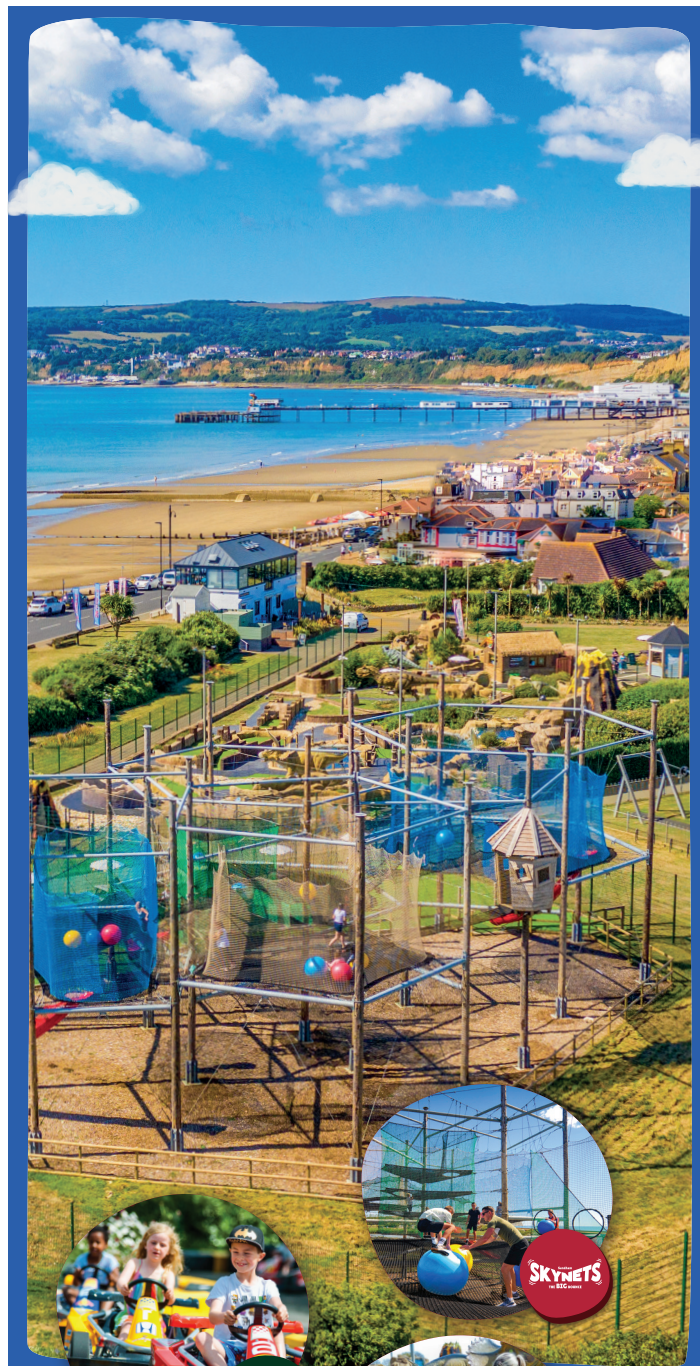
TWITTER
@iwbeaconmag

VISIT US
iwbeacon.com

INSTAGRAM
@beaconiow

EMAIL
hello@iwbeacon.com

totalsensemedia



Sandham Gardens

Sandown Bay

Please find our prices online at
Sandhamgardens.com

READY TO LEAVE SCHOOL?

A TRAINING PROGRAMME WITH HTP IS THE WAY FORWARD – NOW MORE THAN EVER

If you're preparing to leave school, our programmes provide great opportunities to get working towards a dream career. Come to HTP for a change and a fresh start.

2021 is a year like no other. Young people leaving school or college are looking for the best way to train for a career or get straight into the world of work.

Our wide range of Full-time Courses provide you with the skills, experience and qualifications to progress directly into a job. Or if you're eager to get out there straight away, why not start a workplace Apprenticeship? It's a much faster way to progress your career than by doing A-Levels or going to university.

We have a proven track record in helping young people to kickstart their careers. Apply to HTP now and we can find you a course or Apprenticeship that will inspire you.

Try something new. Your future starts here!

Start as soon as you're ready • No tuition fees • Earn while you learn!

**APPLY
NOW**
It's easy!

Visit http.ac.uk • Call 01983 533926

 **HTP** APPRENTICESHIP
COLLEGE



Winterbourne, where Charles Dickens stayed in 1849. During his stay, Dickens wrote some of his novel, *David Copperfield*.



A new walk, celebrating the life and work of Charles Dickens has been created in Bonchurch and Ventnor.

Curated by the owners of the beautiful Haviland Cottage, the walk takes you past key locations which map Dickens' stays in Bonchurch and Ventnor between 1838 and 1860.

The creators have researched the local history, with help from Ventnor Heritage Centre, Bonchurch Community Association, Members of the Charles Dickens Fellowship, and others.

"In 1849, the author Charles Dickens moved to Bonchurch, Isle of Wight for a long summer. During this time, he enjoyed walking around Bonchurch village, Ventnor and the surrounding areas. He also got to know many people in the local community which influenced his writing. In fact, a few of these local

characters found their way into some of his most celebrated literary works which have become some of the world's favourite books *David Copperfield* (published 1850) and *Great Expectations* (published 1860)," says Alan Cartwright of Haviland Cottage.

Starting at Haviland Cottage, on Madeira Road, you'll retrace the steps that influenced many of Dickens' literary works. Each key location is marked by a blue plaque.

The shorter version of the walk takes just over an hour to complete and is quite hilly, so bring your best walking boots.

The walk takes you past key locations which map Dickens' stay in Bonchurch and Ventnor between 1838 and 1860.

If you'd like to challenge yourself a little further, a longer route takes more than two hours and heads along the coastal path, from Bonchurch to Ventnor Esplanade. You'll head up the steep hill towards The Royal Hotel and Ventnor Cemetery. You could stop in at the brilliant Ventnor Heritage Museum along the route if you wish to make a day of it.

Walk courtesy of Haviland Cottage, a luxury holiday cottage nestled in pretty Bonchurch village, near Ventnor.

Organisers would love those who enjoyed the walk to consider donating £3 to the Bonchurch Community Association, which provides village upkeep and community events. To see the route in more detail or find out how to donate, visit www.havilandcottage.com/dickens.



Haviland Cottage, where the walk begins



Walk Time: 1-2 hours

BOOK A TEST DRIVE

**GO ON,
TAKE A TEST GLIDE**

SUSPENSION WITH
PROGRESSIVE HYDRAULIC
CUSHIONS[®]
ADVANCED COMFORT SEATS

[BOOK NOW >](#)

THE FRENCH
CAR THAT
SPEAKS YOUR
LANGUAGE



NEW C4

C5 AIRCROSS SUV

CENTRAL GARAGE (NEWPORT) LTD THE ISLAND'S LOCAL CITROËN AND SUBARU DEALER

The dealership offers new and used car sales, as well as servicing, repairs and parts for all makes and models*. Central Garage can offer test drives, nationwide delivery and a free Islandwide vehicle collection and drop off service. Can't get to the garage in person? Central Garage is also offering home test drives and a digital showroom with video walkrounds and personalised presentations. Citroën offer an excellent selection of vehicles, all built with comfort, design and technology in

mind, ranging from Citroën C1 'City Car' to the C5 Aircross Hybrid 'Silent Urban Vehicle'. Selected models have the option of petrol, diesel or hybrid engines with the NEW E-C4 100% ELECTRIC also now available! Subaru UK's range of all-wheel drive SUV and family cars include the all-new Forester and XV E-Boxer self charging hybrids, as well as Outback, Levorg, Impreza and BRZ. Take a test drive and experience the outstanding safety, capability and reliability offered by Subaru.

CITROËN MOTABILITY FROM NIL ADVANCE PAYMENT



Selected models. Ts & Cs and eligibility criteria apply. See motability.co.uk



**NEW CITROËN
C3 AIRCROSS SUV**
ADVANCED
«GET COSY»
COMFORT SEATS
NOW AVAILABLE TO ORDER



THE FRENCH
CAR THAT
SPEAKS YOUR
LANGUAGE



**A NEW
GENERATION OF
ADVENTURE IS
WAITING TO BE
DISCOVERED.**

INTRODUCING THE ALL-NEW
SUBARU OUTBACK.



**ALL-NEW FORESTER
AND XV E-BOXER.**



Discover Hybrid, the Subaru Way.



Riverway, Newport, Isle of Wight, PO30 5UX
TEL: 01983 526541 sales@centralnewport.citroen.co.uk

A day to remember with

ANNETTE BADLAND

Back in 1981 when *Bergerac* first came to BBC TV, it was no surprise when John Nettles received sack loads of fan mail. I, like millions of other men, rather fell for the more rubenesque charms of the Bureau receptionist Charlotte, played by the gorgeous Annette Badland.

By John Hannam

I waited fully 37 years for an interview — and it was well worth it. I finally caught up with Annette in 2018, backstage at London's Shakespeare's Globe Theatre, on the banks of the Thames. She was then appearing in *A Winter's Tale* and rehearsing for a new play called *Eyam*. Being such a lovely lady, she gave up part of her lunch break to talk to me.

By that August day in 2018, long after Charlotte in *Bergerac*, Annette was known by millions as Margaret Blaine in *Doctor Who*, Glenna Fitzgibbins in *Outlander*, 'Babe' Smith in *EastEnders*, Hazel Woolley in the *Archers* and Fleur Perkins, the pathologist from *Midsomer Murders*.

Annette was spotted playing a one-off character in an episode of *Shoestring* and that led directly to Charlotte in *Bergerac*. In all she played in 29 episodes. You can catch up with all of these on BritBox, the TV streaming service.

There is no doubt she made a bigger impact than expected in the series and her huge fan mail was such an added bonus.

Her earliest ambition, after leaving the East 15 drama school, was to work for the Royal Shakespeare Company. She has achieved that honour on numerous occasions. Her stage credits are amazing.

"I have never dreamed of being a star or very famous. I just wanted to do my job to the best of my ability and enjoy so many different spheres of the business. I love the chance of playing so many varied characters," said Annette.

In the early days she worked in comedy shows with Hale and Pace and Dick Emery, played four different characters in *The Bill* and was such a

hit in two series of *Happy Families*. Men of a certain age still tell her they rushed home from school just to see her in that series. Playing Mrs Dooley in the *Queen's Nose* also won her many new fans.

Back in 2014 she joined *EastEnders* as the maternal aunt of Shirley, Tina and Mick Carter. She was brought in to reinvigorate the show's older generation. She had some great storylines working alongside Timothy West (as Stan Carter) and Danny Dyer (Mick). Babe, who had never really been loved, became a wicked aunt who was jealous, bitter and revengeful.

Back in 2014 she joined EastEnders as the maternal aunt of Shirley, Tina and Mick Carter

Annette's character was hated by so many fans of the show and this even led to death threats in real life. The police were involved in one particular incident, which certainly frightened her. Obsessed fans who passed her in the street would openly shout "we hate you." Realising that some people really thought she was Babe Smith and not Annette Badland was also quite scary.

In fact, she has never been written out of the



Picture by Ruth Crafer

script so Babe could well emerge again.

In *Midsomer Murders* she has the dream part of Fleur Perkins, the pathologist. In so many of the shows she has all the best one-liners — and makes the most of them.

Her car status has also gone up from a three-wheeler in *EastEnders* to a black convertible Jag in *Midsomer*.

Look out for her soon in a new series called *Whitstable Pearl*.

The greatest moment in her life? Flying in a Spitfire from Biggin Hill soared well above any acting role, particularly when she took the controls for a short time and did a victory role. It was an emotional experience for her in many different ways. She won the trip in a competition.

Annette, who has recently been seen in TV's *Ted Lasso*, was such a great help to me after the interview, which can be listened to from all the leading podcast sites. In less than an hour I had another booked with Joan Armatrading at the Electric Airwaves Studio in central London. She told me of a shortcut across the Millennium Footbridge over the Thames to the nearby St Paul's underground station. After crossing the bridge I just couldn't find the station. Thankfully, a very well groomed friendly guy was more than happy to be stopped and he quietly directed me straight there. I instantly thanked him and being a little stressed to get to Joan on time, I didn't realise until five minutes later that my saviour had actually been David Tennant. ③



As Babe in EastEnders

Image: BBC.





Blanchard Fields, Brighstone

We are currently releasing phase one of the development and will be taking reservations now.



Blanchard Fields is a brand new development with a mixture of housing.

- Self Build Plots
- Over 55's Housing
- Full market Housing

Priority is given to local persons with a connection to the area, for further information regarding this a brochure is available upon request.

For more information on the development contact our New Homes Department on **01983 538080** or email: newhomes@hrdiw.co.uk

TOM KERRIDGE'S ULTIMATE HOT DOG

Inspired by the festive favourite pigs in blankets, Tom Kerridge's ultimate barbecue hot dog is wrapped in bacon and topped with caramelised onions, melted cheese and mustard mayo.



SERVES

4

INGREDIENTS

For the barbecue burnt onions:

3 large onions, finely sliced
3tbsp vegetable oil

For the pigs in blankets:

4 jumbo sausages
2tsp (heaped) mild curry powder
12 rashers of steakly bacon

For the German mustard mayo:

100g thick mayonnaise
40g German mustard
3tsp finely chopped shallot
10 cornichons, finely sliced
2tbsp dill, finely chopped
Salt and freshly ground black pepper

To assemble:

4 long hot dog rolls
8 large slices of dill pickle
8 thick slices of smoked Bavarian cheese
A bunch of spring onions, green part only, finely sliced

METHOD

1 To cook the onions, place a cast-iron pan on the hot barbecue and add the oil. When it is hot, add the onions with a generous pinch of salt. Stir well and cook for about 20 minutes until softened, dark and caramelised.

2 Meanwhile, prepare the sausages. Poke a metal skewer through the length of each sausage and lay the skewers on a tray. Season with the curry powder, trying to get an even coating all over the sausages. Wrap each one in bacon, using three rashers per

sausage, and secure the bacon with a couple of cocktail sticks.

3 Lay the bacon-wrapped sausages on the hot barbecue and cook for about 10 minutes, turning every minute or two. While they are on the barbecue, mix the German mustard mayo ingredients together in a bowl, seasoning with salt and pepper to taste; set aside until needed.

4 Once the sausages are cooked through, lift them off the barbecue and place on a tray. Remove the cocktail sticks and metal skewers.

5 To build the hot dogs, cut the rolls through the middle and spoon in plenty of caramelised onions. Add the bacon-wrapped sausages and top with the pickle slices and cheese.

6 Place the hot dogs on a sturdy baking tray on the barbecue, put the lid on and leave for a minute or two so that the cheese becomes all gooey and melted. Transfer the hot dogs to plates and spoon on the German mayo. Scatter over the spring onions for freshness and serve.



SOLENT & WIGHTLINE CRUISES

EVERY SATURDAY & SUNDAY (weather depending).

Departs Thetis Wharf, Cowes (next to the Chain Ferry) at **0930 hours** to Gunwharf Quays, Portsmouth. Returning at approximately **1700 hours** from Gunwharf Quays back to Thetis Wharf, Cowes. (Please listen out for announcements for exact time). **Adults £9 / OAPs £8 / Children £7.**

Price does not include admission to attractions

Booking is essential before travelling.

Call us on **01983 564602** or go to our website **www.solentcruises.co.uk** to book and pay online.

Sailings are subject to any COVID restrictions in place at the time. Please contact the office to confirm



FACE MASK to be worn at all times

ISLE OF WIGHT ARTS

WIN
£100 OR £50
OF OPEN STUDIOS ARTWORK
See your local council website for more information

OPEN STUDIOS

2021

FRIDAY 16 - MONDAY 26 JULY

LOOK FOR THE RED BUNTING

COME AND MEET THE ARTISTS | FREE ADMISSION |

FIND OUT MORE AT
ISLEOFWIGHTARTS.COM

pepper
www.peppercreative.co.uk

Da Vinci

Mediterranean Restaurant & Bar

Coming Soon

*Steak on the rocks, fresh pizza,
speciality cocktails.*

11 Holyrood Street, Newport PO30 5AU

For Bookings: 01983 300055

www.davinciow.co.uk



**NEW FOOD MENU, NEW LOOK INSIDE,
COSY SUN TRAP GARDEN AND
JUST TWO MINUTES FROM THE
RED FUNNEL FERRY.**

SPECIAL OFFER

20% off with this voucher

Thursday 5pm-9pm

Friday lunch 12pm-3pm*

Bring this voucher with you

*Until July 31st 2021



The Victoria Tavern
62 Clarence Road, East Cowes
PO32 6ET. Tel: 01983 296472





SERVES

4

CARAMELISED RUM BANANAS *with Ice Cream*

This simple and quick dessert by Adele Trathan can be made two ways; on the stove, or over a hot barbecue if dining al fresco. Keep it in mind for a swift and spectacular sweet treat requiring minimum time investment

INGREDIENTS

4 ripe bananas (not overly ripe/brown), peeled cut in half lengthways
50g (2oz) butter
100g (4oz) caster sugar
Pinch of grated nutmeg
½ tsp ground cinnamon
2 tbsp rum
160ml (5fl oz) coconut cream
Ice cream to serve

METHOD

1 Melt the butter and sugar together in a large skillet or frying pan over a low to medium heat, before adding the nutmeg and cinnamon and stirring the syrup mixture until the sugar is dissolved and beginning to bubble. Continue to simmer and stir for about another two minutes.

2 Add the banana pieces, tossing them in the syrup and coating all sides of the bananas. Continue to simmer until they are caramelised and golden.

3 Add the rum and turn the heat up, gently swirling the pan to warm the rum, which should flame with the heat. This will remove

most of the alcohol content and leave the luxurious rum flavour intact. Continue cooking until the flame dies out then pour in the coconut cream and stir to combine.

4 Serve two banana portions per person with a good scoop of ice cream and generous drizzle of the rum sauce. Sweet!



18TH JULY
SANDOWN
AIRPORT

Rainbow Run with extra bubble fun

Wessex Cancer Trust is adding bubble fun to this year's Rainbow Run — in celebration of the charity's 40th birthday.

The popular family fundraiser, featuring giant inflatables and colour stations, will this year include two new bubble stations, making it more chaotic and colourful than ever before!

The event, which is once again sponsored by ARID Design and Management Consultants, will also include live music, food vans and a licensed bar.

You can sign up at www.wessexcancer.org.uk/event/rainbow-2021

All participants will receive a medal for taking part.

Northwood House Tea Garden

The Northwood House Tea Garden in Cowes is open again on Sundays throughout the summer from 11am-5pm.

There's nothing more British than enjoying a cup of tea and a delicious slice of cake or a cream tea on the lawns of a grand manor house, so gather some friends and family and head to Northwood House.

Covid-safe policies are in place for your peace of mind.

More information at northwoodhouse.org



Woodland Sessions to feature Katie Melua and Tom Allen



Top entertainment and big stars return to the Isle of Wight this summer at Robin Hill's new event, The Woodland Sessions.

The event, between July 15th-17th, is a series of intimate outdoor concerts, taking place in the park's unique Woodland Amphitheatre — the Island's largest seated venue. It's being billed as 'exceptional talent in an exceptional setting'.

Kicking off the line-up is Woodland Sessions COMEDY. Hosted by Tom Allen and held on the evening of Thursday July 15th, the night stars top comedians Rich Hall, Seann Walsh and Maisie Adam.

Friday July 16th will see Woodland Sessions CHILLED, featuring international star Katie Melua performing a stunning and exclusive acoustic set.

Finishing off the run on Saturday July 17th is Woodland Sessions PARTY with the UK's biggest 90s dance covers band and festival favourites, Rhythm Of The 90s, getting the summer party started!

Gates open at 6.30pm and all evenings will start with drinks at the beautiful Woodland Ponds.

Capacity is limited to under 1,000 per night and all shows will comply with the latest COVID regulations. Tickets available at: www.robin-hill.com

15TH - 17TH
JULY



The Entertainment GUIDE

Visit iwbeacon.com to see our full events guide

Teachers go head to head in charity match

A one off teachers football match is going ahead to raise money for an Isle of Wight charity.

Cowes Sports FC will host the game, which will be the first of its kind, between Secondary School and Primary School teachers.

PE teacher at The Bay Secondary school and semi-professional Cowes Sports player Gareth Bricknell said The Wight Brainy Bunch is the chosen charity because it forms part of his fundraising before he runs a London marathon in October.

The Wight Brainy Bunch provides a support network and financial assistance to local families affected by Brain Tumours.

There will also be live music, food and a raffle at the event.

The match kicks off at 11am on Sunday July 11th. Entry is £3 for adults and £1 for children.

If you are a teacher and would like to be involved or a spectator who'd like more information please contact Gareth via email (gbricknell@bayceschool.org) or by telephone (01983 409121).



11TH JULY
11AM

Dash and Splash

Dash and Splash is a 5-kilometre dash along the length of Sandown Bay on the Isle of Wight. Starting at Shanklin Rowing Club to Yaverland, Sandown.

This beautiful area has the largest bay on the Island which, at low tide, offers a unique run along the hard sand. There are 43 groynes in total to negotiate along the 5-kilometre run, most of which are a straight run through large gaps. The remaining 14 will be splashed around, which at low tide will be mostly ankle deep. Two groynes could be waist deep, these will have marshes in the water.



Dash and Splash is a fun run and not a race! You may run/walk and raising money for Aspire, Ryde, a charity that works within the Island community and worked tirelessly through the Covid lockdown, supporting those vulnerable Islanders with food parcels, hot meals, prescription deliveries and daily supportive phone calls.

To register for this race go to dashandsplash.org.uk

Tickets: Adults £10, child £5. Under 11 years must be accompanied by an adult.

Every participant gets a medal.

14TH
AUGUST
9.15AM

Impromptu Shakespeare at Ventnor Fringe

Sad that Shakespeare hasn't written anything new for over 400 years?

Well, hold onto your doublets, ruffs and trunk hose. The Bard is back! With story and verse improvised in the moment, enjoy a riotous new Shakespeare play every time – performed by Impromptu Shakespeare's whip smart cast.

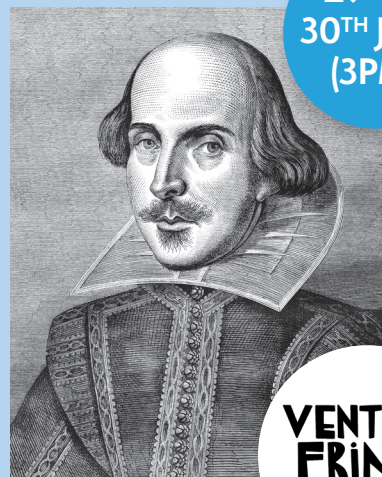
Packed with priceless wit, lyrical smarts, romance, and a dash of double-crossing, this leading ensemble do the Bard proud with a brand new one-act hit every time, inspired by audience suggestions.

It's perfect for families with children (age guidance 10+) with its winning combination of accessible irreverence whilst striving to be as true as possible to Shakespeare. The cast are not only leading theatrical and comedic improvisers but have a broad array of education and experience in classical text: dissertations on Shakespeare's works, classical acting training and a multitude of acclaimed Shakespeare credits (including with Shakespeare's Globe).

www.impromptushakespeare.com

Venue address: The Magpie, Ventnor Park, Park Avenue

Ticket price: £10/£8. Age guidance 10+



29TH &
30TH JULY
(3PM)

VENTNOR
FRINGE
ISLE OF WIGHT

Jack Up The Summer

Safe, relaxed & friendly

Relive the good times! The Island's community retro festival is all set to bring live music back on 6-8th August. Reunite with friends & family

in a safe, outdoor environment with plenty of green space for everyone to spread out. Lie back and soak up the sounds of Heather Small, Heaven 17, Strangler's frontman Hugh Cornwell, Aswad, From The Jam, Dario D, Phats & Small, celebrate Queen's greatest hits with The Bohemians, Abba Chique, Black Lace, Ska'd For Life and more!

Centrally located at North Fairlee Farm Newport, with great value prices starting from only £15 and FREE entry for kids, it's time to finally give yourself something to look forward to this Summer whilst helping to support a wide range of local charities & small businesses!

jackupthesummer.co.uk



6TH - 8TH
AUGUST



EDDIE MINGHELLA CELEBRATES 100TH BIRTHDAY

The founder of the world-renowned Minghella ice-cream, Edward Minghella, celebrated his 100th birthday on June 21st.

By Mal Butler

Over the last eight decades living on the Island, Edward Minghella has worked for countless charities and promoted civic causes.

His many achievements include him being made a Freeman of Ryde five years ago while he was a former Deputy Mayor of Ryde and is a Life President of the Chamber of Commerce.

Edward, was born in Coatbridge, Glasgow in 1921. His mother was British born (but of Italian heritage), and his father, Antonio, hailed from Cassino in southern Italy.

He was the eldest of four children. The young family moved from Glasgow to Paris, where Edward's father was an electrician. However, in 1926 Antonio died of a mysterious fever, leaving his wife with no income and four mouths to feed. In desperation, she turned to the care of relatives in Italy.

Here, Edward shone at elementary school, winning a scholarship to secondary school worth 25 lire, which would pay for shoes and uniform. But the family

was hungry, so Edward had to collect the money, but it went towards food, not uniform, and he was sent to work in the fields, helping a farmer tend buffalos.

His schooling had ended with only three years of elementary school. Hunger

remains a recurring theme when he recalls those years.

Just as the war was beginning, Edward and his younger brother, Vic, being British born, were invited back to the UK to work in an ice cream factory in Portsmouth.





Writer and film director, Anthony Minghella
— Eddie and Gloria's late son.

Edward spoke mostly Italian, with a smattering of French from his early years, but as a British subject, he was called up joining the Royal Army Medical Corps.

After the War, he returned to Portsmouth and found himself chaperoning his boss's son, who was 'courting' a girl in Ryde. The girl, too, had a chaperone — her sister, Gloria.

And it was the two chaperones who fell in love with the couple marrying in St Mary's Church, Ryde when he was just 19.

Edward began working in the family's cafe, The Mayfayre, in the High Street, and invested his demob pay to create a small ice cream factory in the back.

Their businesses expanded, and they bought the shop next door, and, over the years, several buildings at the rear, off George Street, behind the Commodore Cinema. For the first years of married life, Edward and Gloria lived above the shop, only moving to their house, in Northwood Drive, in 1960.

His ice cream became legendary on the Island and across the country, and was to be found in supermarkets up and down the land, including Harrods and Fortnum & Mason. He won countless prizes and prided himself on using the finest natural ingredients at a time when such things were not as commonplace as they are today.

But Edward and Gloria were known for more than their ice cream. Their cafe, restaurant and hotel business opposite Woolworths was a landmark in its heyday, and it's safe to say they were pillars of the community.

They were both civic-minded, and served as independent councillors for decades. Edward became the Deputy Mayor of Ryde Borough Council in 1970, just before the reconfiguring of the local authorities.



He was a governor of many Island schools and, in his role as President of the Island's branch of Save The Children, he hosted a major fundraising event, welcoming the charity's patron, HRH The Princess Anne to Carisbrooke Castle in 1978.

Some of Edward's successes as a councillor are given now — welcoming the Hovercraft service to Ryde and the rebuilding of the sea defences.

Edward is also a current active member of the Island's Catenians an association for Catholic men.

His service to Ryde over more than 65 years was acknowledged in 2015 when he was made a Freeman of Ryde. Perhaps for his 100th birthday, he will exercise the right conferred by his freeman status to drive sheep up the High Street!

Eddie himself, felt the big day was no different to any other, saying: "I don't feel any different, really. I exercise the same and I eat the same. I try my best in life and I have the love of my family and friends.

"I think I have been pretty lucky. I lost my father when I was five and felt like I had been orphaned but I got over that and went to on have a full life.

"I have always believed in being kind and being fair and doing the right things at the right time."

No account of Edward's life could fail to mention his family. Gloria, his wife and business partner, was equally known for her contribution to civic life, sitting on the councils for many years, becoming Mayor of Medina in 1980, as well as serving as a magistrate, and Deputy Lieutenant of the Island — efforts which were rewarded in 2007 with an MBE for services to the Island.

They had five children with eldest daughter, Gioia, followed very much in both their footsteps, running the ice cream business over many years, and serving as the Island's High Sheriff in 2019.

Their late son, Anthony, was known internationally for his work as a writer and film director, and never forgot his Island roots. In his acceptance speech at the Oscars in 1997, he held

his Oscar aloft and declared it was 'A great day for the Isle of Wight', perhaps to the bemusement of Hollywood!

Anthony was made the first Freeman of the Isle of Wight in 1998. Edana, Loretta, and Dominic are also well-known Islanders who are proud of

their heritage. In October this year, Loretta will become the first woman Master of Clare College, Cambridge — returning to the college she attended as an undergraduate after Medina High School in 1982.

Edana is a famous jazz/blues singer and writer while Dominic is a television producer and screen writer.

As well as his children, Edward now has twelve grandchildren and five great grandchildren, and the family will get together for a private party. A bigger celebration has been postponed because of the Covid restrictions and it is hoped to be held in the near future.

As he looks back on his life, and particularly as he recalls his own early years of poverty and hunger, Save The Children remains a charity close to Edward's heart. **For his birthday, he has set up a Justgiving Page for donations in lieu of gifts: www.justgiving.com/fundraising/EdwardMinghella.**

His ice cream became legendary on the Island and across the country, and was to be found in supermarkets up and down the land, including Harrods and Fortnum & Mason



Every used car is covered by the **Esplanade Approved** Used charter, where customer peace of mind is at its heart. When buying from Esplanade every used car comes with all of these unique benefits:

- ✓ **Comprehensive multi-Point Workshop Check**
- ✓ **2 Months Unlimited Mileage Warranty**
- ✓ **All service requirements met** - no need for another for at least 6 months
- ✓ **12 Months Roadside Assistance Cover** - Including mainland UK & Europe
- ✓ **Recall check** - any previous manufacturer recall requirements completed
- ✓ **Tyre check** - at least 3mm of remaining tread
- ✓ **Brake pads check** - no more than 70% worn down
- ✓ **HPI-cleared** - no outstanding finance or insurance write-offs
- ✓ **Expert Flexible Finance Advice** - access to a range of funders and products
- ✓ **Value My Car** - with our online part exchange valuation
- ✓ **5-Star Premium Valet**
- ✓ **A unique 30-day no quibble exchange**

We are confident that we can find the right car for you.

📞 01983 523232 🌐 esplanade.co.uk

Nlclinic
ISLE OF WIGHT

COVID-19 PCR TESTING ON THE ISLE OF WIGHT



From its Newport based clinic, NL Clinic Isle of Wight offer a fast and accurate service for fit to fly, test to release and 2/8 day testing.

TESTS AVAILABLE 7 DAYS A WEEK

Our Services

- Fit-to-fly from £69
- Test-to-Release from £149
- Home test kits from £60
- Antibody tests from £60
- Day 2 & Day 8 tests from £189

Why choose us?

- Multiple processing times
- Pre-booked time
- Same day available
- UKAS accredited laboratory

T: 0330 025 2028

www.nlcliniow.co.uk

62 Crocker Street, Newport, Isle of Wight, PO30 5DA

Stay at home with quality care you can trust

We believe that **home is where the heart is**. We strive to **maintain your independence** so you can continue to enjoy the **comfort** and **security** of your own home.

Our experienced care teams will create a bespoke care plan to suit your needs; whether you require **personal care**, **companionship**, **domestic visits** or something else, our carers deliver care when, where and how you wish to receive it.

Contact your local branch today
for a free quote **01983 450 023**



www.apexprimecare.org

**Saving water
saves money,
cuts carbon
and protects the
environment.
It all makes
a difference.**

For more simple tips on
how to save water, visit:
southernwater.co.uk/save

**WATER
for LIFE®**

from
**Southern
Water.**

Victoria Antiques *Shanklin*

FREE Valuations on coins, banknotes,
medals, also silver & gold items such as
boxes, jewellery & pocket watches.
We will make you an offer on all of the
above if you wish.



We can pay you by cash, BACS,
Paypal or cheque.

Find us at 50A Regent St, Shanklin
PO37 7AE. Tel: 01983863632
(open Monday to Friday 10am - 3pm- no weekends)

PLEASE CONTACT US TO MAKE AN
APT OUTSIDE OPENING HOURS



ST HELENS SERVICE STATION

ALL MAKES SERVICE & DIAGNOSTICS

Factory level diagnostics & services for BMW, Volvo, Peugeot, Citroen and Renault
Genuine parts supplied for Jaguar, Land Rover and Porsche

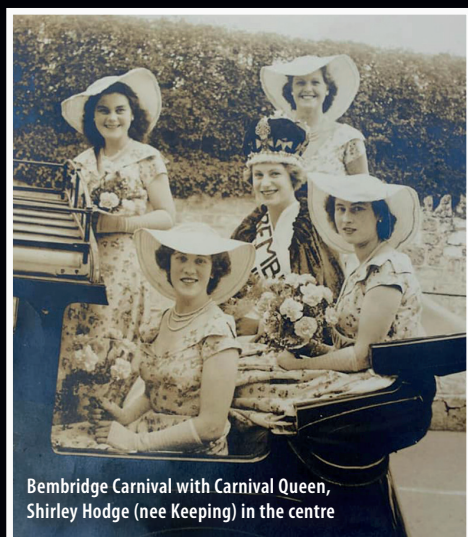


VOLKSWAGEN • PEUGEOT • RENAULT • CITROEN • BMW • MERCEDES



**MOTs AVAILABLE FOR ALL
MAKES & MODELS**

Embankment Road, Bembridge PO35 5NS. Tel. 01983 872332 or 07920 224181



Bembridge Carnival with Carnival Queen, Shirley Hodge (nee Keeping) in the centre



Sandown in the late 1950s.
Image courtesy of Molly Anderson.
Instagram: @molly_the_historian
(also right)



Crowning of the May Queen at St Helens Carnival, 1930s-1940s.



Newport Carnival 1930

CARNIVAL

ISLAND



Cowes Carnival Queens.

In the summer of 1887, Queen Victoria watched on as the first Isle of Wight carnival took to the streets of Ryde in aid of her Golden Jubilee.

The streets were lined with British flags and local revellers, as bands played and a tradition spanning more than 130 years began.

Today, carnivals are held in towns and villages across the Isle of Wight. Schools, families and community groups don their cleverly created costumes and fill the streets with cheer, often raising money for good causes and community events.

Only Covid has ever stopped the Island's carnival season in its tracks. So on these pages, we celebrate the many years of merriment, with a look back at some moments in Isle of Wight carnival history, while we look forward to its return.

We'd love to hear your carnival memories. Get in touch at hello@iwbeacon.com if you'd like to share them with us. 📧



Whitwell. Early 1900s.



Archie Warren on his steed.



Shanklin 1972. Photo courtesy of Mrs Doris Russell



David Biles and Robert Cooper as Steptoe and Son in the early 1960s. Photo courtesy of Sam Biles.



Shanklin 1972. Photo courtesy of Mrs Doris Russell



Newport Carnival. Around 1962.



Ryde Carnival. Around 1992



1988 carnival queen, Becky Harvey and 1939 carnival queen Joan Bartrum



Tony Benton 'getting arrested' by the Keystone Cops: East Cowes Carnival.



Newport Carnival in the 1950s

Join over 100 business leaders

who benefitted from the Solent LEP's
Local Business Network Programme
(Peer Networks) in 2020

solentlep.org.uk



INTRODUCTION
OFFER

10%

OFF BANNERS
QUOTE RAVEN10

WIDE FORMAT

BANNERS
POSTERS
CANVAS PRINTS
DIGITAL WALLPAPER
VINYL STICKERS

DIGITAL PRINTING

LEAFLETS
BUSINESS CARDS
NCR
BOOKLETS
STATIONERY

www.ravenprint.co.uk
studio@ravenprint.co.uk
01983 529044

We offer genuine caring people
who will give you a standard of care
and support that can really make a
difference to your life.

Services we offer include:

Personal care, medication, shopping,
help around the house, going in/out
of hospital, specialised needs,
companionship, holiday/mainland
assistance, day sits, sleep-ins, 24/7
care/assistance.

We can visit you to discuss what
you require, under no obligation and
plan a way forward that suits your
requirements. All staff are police
checked and fully insured. CQC
registered.

Do you need assistance to have the quality of life that you deserve?

Don't just think
care - SAY care
**NOW
RECRUITING**

 **Say Care Limited**
Liber Libera, Liberum
Afton Road, Freshwater (opposite garden centre)

For a full price list or further information please contact:

Telephone: **01983 716686**

Email: saycarelimited@gmail.com

www.saycare.co.uk



Affordable Direct Cremations

Located on the Isle of Wight for the Isle of Wight

Brought to you from an Independent Funeral Directors with nearly 200 years of experience looking after families on the Island. We are the only funeral directors based on the Isle of Wight dedicated to this style of service at isleofwightdirectcremation.co.uk or call us on 01983 632598

How does it work?

Direct cremation is an affordable alternative to a traditional funeral. It separates the cremation from the funeral ceremony. The cremation takes place without any service at the crematorium, and without mourners or a minister present.

What's the difference between a direct cremation and a traditional funeral?

A direct cremation separates the celebration of life from the cremation. The cremation takes place without anyone present allowing you and your family the freedom to celebrate your loved one at a time, place and venue of your choice. We carry out this service in the same dignified, professional way as we would do for any funeral that we undertake. The simple nature of a direct cremation is reflected in the price.

How much does a direct cremation cost?

We have two options to choose from:-

- Our 'Island Way' is £1,695.00, this is for a direct cremation at the Isle of Wight Crematorium
- Our 'Wessex Way' is £1,495.00, this is for a direct cremation at a mainland crematorium.

We offer this option for families that would like to take advantage of the savings that mainland crematoriums offer. We then pass this saving onto families. Both these options are all inclusive with no hidden additional costs; unlike mainland providers who charge additionally for ferry fares.

Can I get help with the cremation costs?

Yes if you are in receipt of benefits you may be entitled to a payment of up to £1,000 from the Department of Work & Pensions, so we advise contacting them to enquire.

Why Choose it?

- Less expensive than a traditional funeral
- It allows you the freedom & flexibility to focus on celebrating a life well lived.
- Freed up from the cremation it opens up the options for venues and times, even weekends, to hold your celebration.
- A simple and easy to arrange process

What's the difference between Isle of Wight Direct Cremation and a mainland provider?

- To start with we are based here on the Island. We can promptly take your loved one into our care without the need for travelling over by ferry involving lengthy and distressing delays.
- We usually meet you face to face either at our island offices or in the comfort of your own home, but due to current restrictions of social distancing we can make all arrangements on the telephone
- Mainland providers courier the ashes back to you whereas we provide a more personal service by returning them to you at home, or you can come into either our Bembridge or East Cowes office.
- We are locals too and understand the local community.

Who is Isle of Wight Direct Cremation?

We are independent family funeral directors based here on the Isle of Wight. We are the Isle of Wight's longest running established undertakers.

We have offices based in Bembridge & East Cowes so you can come in, or call us on **632598** or even visit us on line at www.isleofwightdirectcremation.co.uk. With over 190 years of experience we are on hand to make a difficult time easier.

Do you offer pre paid direct cremation funeral plans?

We get asked this question a lot and the answer is, Yes! Often people like to get their affairs in order to avoid expense being left to their loved ones at a distressing time. Our plan holders often tell us that this can be a big weight off their mind.

A pre paid funeral plan offers total security. There are flexible payment options too. We use Golden Charter pre paid funeral plans as they allow you to pay at today's prices and avoid rising costs.

Who is Golden Charter?

Golden Charter is the UK's market leader for providing pre paid funeral plans to Independent Funeral Directors since 1989. Your funds are safe and are placed into The Golden Charter Trust. The Trust will pay out for every plan that pays into it.

Golden Charter
Funeral Plans



located on the Isle of Wight for the Isle of Wight

Affordable Direct Cremation - All inclusive, no hidden costs
Separate the Cremation from the Celebration

www.isleofwightdirectcremation.co.uk // info@isleofwightdirectcremation.co.uk

Direct Cremations
starting from **£1,495.00**

Pre paid funeral
plans from **£1,750.00**

Call us on:
01983 632598





News from Cowes West

by Cllr Paul Fuller

COWES/GURNARD SEAFRONT PARKING CHARGES: It was intended to install meters from June. Following proposals being opposed these are now 'on hold'. Because of financial concerns, I've outlined measures the Council can take to address this.

BUCKLERS VIEW: I met with Southern Housing and am advised that work to extend the complex has been postponed to at least June 2022.

COASTAL PATH: The Coastal Path between Gurnard and Thorness has reopened following the path being rolled back. Many thanks to landowners for facilitating this work.

ISLE OF WIGHT CABINET: At Full Council in June, I was appointed as Cabinet Member for Planning and Housing. My priority within my Cabinet position is accelerating the roll out of the new Planning bible for the Isle of Wight.

COWES MEDICAL CENTRE: The centre is due to have a new telephone system installed by July. In addition, a Phlebotomy Service is anticipated this summer. This service will be by appointment and available from 7:30am-12:30pm, Mondays to Fridays.

Please visit: cowesmedicalcentre.co.uk for details.

BEACH HUTS: I have received a number of enquiries concerning the availability of beach huts. At Gurnard all huts are privately owned, and when sold tend to be advertised through estate agents.

COVID UPDATE: With the potential of normality on the horizon, I continue to receive concerns over visitors coming to the Isle of Wight. On a number of issues raised including safeguards in place for port authorities, I have been liaising on these matters. Updates on questions raised appear on my website.

LITTER: Thank you to the numerous residents who volunteer to keep Gurnard Green and beach pristine. Although there are increased collections during the summer, please ensure rubbish (inc. disposable barbecues) is properly disposed of.

☎ 289595/ 07935 090 835

✉ paulfulleriw@gmail.com

100m Swim Marks 100th Birthday

By Oliver Dyer

A Cowes man took on the challenge of swimming 100 metres on his 100th birthday in aid of the NHS last month.

Bill Smith, who lives at Cowes' Briary Court, made a splash in the residential complex's pool.

He plans on raising as much money as possible for the health service, and has even pledged to donate £100 himself.

Bill has always been an avid swimmer, and credits exercise and beer for his long, happy and healthy life. A retired teacher and chef, Bill moved to the Island with his wife in 1970.

He said: "I would say my condition is due to what my mother made of me and after that, and still is, the NHS. They fill me with tablets! And now I'm living on tablets! But no, I do exercises every morning and always have done ever



since I was seven or eight years-old.

"I did about five or six mini press-ups. So I thought I'll see if I can get any more, up to 10. I'll see if I can get 20, 100! I got up to 100 then I thought can I get up to 200 and then eventually I got

up to 300. At the moment I don't think I could get up to 300!

"I believe [exercise] is the secret to good living, happy living.

"I lived on the fat of the land. In the kitchen you perspire a lot. Water gets a bit tedious after a while so I drank a lot — beer! There was always a great big saucepan of beer for us to help ourselves to. I could drink maybe at least 10, 15 and sometimes even 20 pints a day!"

A fundraiser has been set up for Islanders to contribute to the cause. It has so far raised £1,772

You can donate at justgiving.com/fundraising/billsmith100.



NORTHWOOD
PRIMARY SCHOOL
www.northwoodpri.co.uk

**Little school...
..big smiles!**

**Spaces available
2021/22**

Ofsted: Good, May 2017

contact us for further details

01983 293392

50,000 Jobs and Counting

By John Warburton

Staff at the NHS Vaccination Hub at the Riverside Centre in Newport marked their 50,000th anti-coronavirus inoculation on Saturday June 19.

Amid balloons and congratulations, patient Gemma Duer, 25, received a shot of the BioNTech/Pfizer treatment.

David Noyes, chief operating officer (Southampton and Hampshire) of the Solent NHS Trust, said:

"Super proud of the whole team at our IoW vacc centre at Riverside who today achieved the brilliant milestone of 50,000 jabs given.

"Great achievement by all involved, led by the super Sarah Stringer with support from across the whole community."

The team has been supported by volunteers from Freshwater Fire Station and



Photo: © Solent NHS

the Friends of Freshwater Fire Station group.

Members congratulated Ms. Stringer (senior manager) along with matron Janice Salter, clinical shift lead Michelle Martin and Emmeline Payne, who is the vaccination centre manager.

They also honoured Watch Manager Kev Garrett, who they said had been part of the team from the beginning.

The vaccination centre's work must continue, as all adults 18 and over are invited to receive anti-coronavirus jabs.



Threatened phonebox on Undercliff Drive, Ventnor
(Photo: © Chris Downer / Creative Commons)

Fifteen Island Payphones Proposed for Removal

By John Warburton

British Telecom is proposing to take away fifteen payphones on the Island, four of which appear to be unused.

But another two of them, outside Esplanade Pavilion in Ryde, and another in the town's St. Thomas Square have an average of 17 calls being made from them every month.

Telecoms regulator Ofcom specifies the procedure for having a payphone closed, if British Telecom — obliged to provide a universal service — believes the location no longer has a need for a public telephone.

That's despite the communication giant saying, as long as eight years ago, that six out of ten phone boxes at that time were not taking in enough money to cover their costs.

A full consultation must take place, Ofcom says, if BT plans to take away a payphone that has no alternative device within 400 metres' walking distance.

In considering BT's proposal, IW Council needs to weigh-up factors such as the quantity of rented housing nearby, or a possible need for emergency calls e.g. if the payphone is next to a harbour.

A public consultation took place in June.

The phones which BT proposes to remove

- Opposite Royal Needles Hotel, Alum Bay, Totland Bay
- Near the RNLI on The Quay, Yarmouth
- Outside 66 Junction of Lower Church Rd and Solent View Road, Cowes
- Junction of Woodbale Road and Shore Road near "W Hotel", Cowes
- Outside No. 130 Shooters Hill junction with High Street, Cowes
- Outside No. 1, Coronation Avenue junction with Newport Road
- Outside No 93-94 South Street junction with St James Street, Newport
- Junction Seven Sisters Road with Undercliff Drive, Ventnor
- Outside Brookside, Bonchurch Village Road, Ventnor
- Opposite 83 High Street, Shanklin
- Outside Whitecliff Lodge, Hillway Road, Bembridge
- Former Post Office, Madeira Road, Seaview
- Entrance to Puck Pool Park, Ryde
- Outside Esplanade Pavilion, Ryde
- Next to Crown Hotel, St. Thomas Square, Ryde



News from Cowes Medina

by Cllr Lora Peacey-Wilcox

BLOOD TESTS: Cowes Medical Centre: Yes, they are finally coming! Sometime during the summer. It will be appointment only, but what a relief. Mon - Fri 7.30-12.30. (not bank holidays). Keep looking at their website for further details.

NEW TELEPHONE SYSTEM: A number of years I have requested this, for the Medical Centre. It will be installed towards the end of June. It is hoped to help the patient experience that we have had so far. I REALLY look forward to this. (Lets hope we can hear the voice better too!).

ALZHEIMER'S CAFE IS BACK: Cowes Football Club will be hosting; plenty of parking, and spacing. Reynolds Close (off Park Road). It will be the 2nd Wednesday of the month 2-4pm. You will need to book: 220200 where you can leave a message. Thanks to our wonderful volunteers that run this for us.

DOG WALKING: Just sometimes life gets complex and we need to walk dogs when its warm. PLEASE think about walking them on the shady part of the pavement or grass. As soon as the temperature rises I always look for the 'cool' spot; my being in the sun can wait! Do you want to be bare foot in a fur coat in 22°?!

FUTURE PROOFING: I know I say it a

lot, but seeing the budgets and money needed at the IW council, it really is important to look ahead. Think about where you live? Is it manageable on your own? What will you need as you get older? What support do you have around you?

SYNCHRONISED LAWN CUTTING: hedge trimming, strimming..... Now there's a thought! No noise all day, most days.....!!

PUBLIC TRANSPORT: I have received concerns about lack of masks on public transport. I can confirm that local firms ARE in line with Dept of Transport legislation.

SPEEDWATCH: We are back, and have a number of volunteers. My thanks to Paul Taylor who has agreed to be our co ordinator. Volunteers seeing if speeding is an issue or perceived! (More volunteers always needed). Please be mindful of your speed as we begin getting back to a 'normal life'! (Whatever that is!!)

DELTA VARIANT: common symptoms, headache, sore throat, and runny nose. GET CHECKED! Pick up the test from your local pharmacies!

COVID: Personal responsibility and common sense!

As always you're my extra eyes and ears.

☎ 645765 📧 lora08@sky.com

Artisan

96 High Street

Your one stop shop for bespoke, unique and delicious gifts.

Wight Love
Designs

Luxurious
Shortbread
Handmade on the Isle of Wight
GC Foods www.cakefoods.co.uk

Fabulously Personal

Lala's Baby
Boutique

TRUFFLES
FUDGE BAR

Geoff Lewis
PHOTOGRAPHY

96 High Street Newport PO30 1BQ
Tel: 07508869826 [f artisan96highstreet](https://www.facebook.com/artisan96highstreet)



News from Central Newport

by Cllr Julie Jones-Evans

Things have now settled down at IW Council with a new team of councillors in charge and I'm really excited about the job I have been given - Cabinet Member for Regeneration, Tourism and Business Development. It's a great opportunity and I've learnt so much in Newport over the years, I feel I've got a good set of skills and experience to do a good job.

Shaping Newport is collating ideas for parking solutions for the town as it's a constant issue that we never seem to solve. Balancing parking with creating a better environment for pedestrians and cyclists is a challenge that we must overcome, so any ideas are welcome.

Newport and Carisbrooke Community Council have agreed to my proposal regarding a funding application to the Urban Tree Challenge to get some more Lucerne Elms in town, either at Hookes Way or Towngate. These are a species that support a rare butterfly as well as being resistant to Dutch Elm Disease.

High Street Heritage Action Zone is going well, the draft Design Guide will be going out to consultation soon and we are also starting to work on the Shop Front improvement grant application process so we can start to fund these improvements.

If you are near Lidl in Newport soon do check out the bank by the dual carriage way as Island Roads are leaving it as a meadow for the summer. There is a wide variety of grasses, including sizeable patches of Buckhorn plantain. The big yellow patches are Horseshoe Vetch and Birdsfoot Trefoil. Also present are Oxeye Daisy, Rock Rose, Red Clover, Field Buttercup and Common Mallow. Newport is the heart of the biosphere!

521068/07886437688

julie.jones-evans@iow.gov.uk

Freshwater Store to be Converted into a Tesco

Southern Co-op has announced that it is planning to sell its store in Afton Road to Tesco Stores Ltd.

Customers and the local community around the large co-operative store in Freshwater are being reassured that they will continue to be served after the store moves over to Tesco.

Whilst this transaction remains subject to a number of conditions being met, it is anticipated the store will be sold as a going-concern operated by Tesco, with the sale expected to complete in autumn 2021.

Mark Smith, Chief Executive of Southern Co-op, said: "Whilst Freshwater is a successful store, it's our largest store and the only one that fulfils the supermarket mission alongside our other 200 convenience stores. We do our utmost to provide the very best service to our local communities and we have every expectation that Tesco will continue this service once the sale completes."



convenience estate, including our Avenue Road store in Freshwater which will continue to serve the local community."

There are no plans to sell or close Southern Co-op's other retail stores or funeral homes on the Isle of Wight and all colleagues have the opportunity to transfer to Tesco under the Transfer Undertaking for the Protection of Employment Regulations (TUPE).

Southern Co-op will also be working with its community partners, local suppliers and other key stakeholders to ensure the transition is smooth and to reduce any impacts wherever possible. It is hoped that there will be minimal disruption to customers during the change from a co-operative to a Tesco.

"This sale presents an opportunity for Southern Co-op to focus on our

East Cowes Man's Incredible Voluntary Service

By Iona Stewart-Richardson

A long-serving volunteer for the Duke of Edinburgh's Award on the Isle of Wight has been recognised for his incredible service.

Barry Jackman, a retired teacher, has dedicated much of his life to the scheme which has been inspiring young people since 1956.

In the week the Duke of Edinburgh would have celebrated his 100th birthday, Barry was handed a DoE Long Service Award for his 47 years of voluntary duty.

He recalled: "The DoE scheme at Cowes High School took off and became one of the largest groups in England."

"Young people gained all three levels of the award which meant we were able

to be guests at Gold award ceremonies in London. I have a photo of my son sat in a washing up bowl in a mini-caravan on Exmoor when he was less than six months old. He is now approaching 50."

Barry said pinpointing a specific "best moment" was tricky, but flying over the Mohne Reservoir in a helicopter in Germany was particularly memorable, as was being taught how to shoot a blow dart in the tropical rainforest near the Thai border with Malaysia.

As a volunteer, he said he greatly enjoyed watching young people gain in confidence and achieve success when faced with a challenge, as well as learning how to deal with the

Vehicle Consulting

Looking for a new car or van?

There is another way...

We can source and deliver any make or model of new vehicle to your door, with multiple finance options.



Cars, Vans or Electric
Personal, Business or Fleet

Vehicle Consulting

THE ISLAND'S LEASING AND FINANCE SPECIALIST

For the latest offers and more details,
visit vehicleconsultingsolent.com
or call 01983 632 562.

Boundary Plans Prompt Petition

By Oliver Dyer

A petition describes plans to split the Isle of Wight into two constituencies as a "threat to our way of life".

More than 100 people have backed proposals to scrap the idea, which is currently under consultation.

Under initial proposals published by The Boundary Commission for England (BCE) last week, the Island would be divided into West and East. It would see two MPs working across the constituencies, instead of the one (Bob Seely) the Island has currently.

Reaction to the plans has been mixed, with some local politicians and residents hailing them as a chance for greater representation at Westminster.

However, others have called for them to be halted. One of those against the changes is Islander Angela Hewitt.

She's created a petition, labelling plans "an attempt to create disharmony".



She said: "We do not want to be divided with the inevitable disharmony it will bring and thrust upon us. Two politicians with different ideals will cause nothing but trouble for us Islanders. When we became a Unitary Authority it was a huge success and brought us together as a strong community. We have united views on the environment, strong commitment to our history and our community. At a time in the world where unity is everything this seems to be an attempt to create disharmony."

We do not want to be divided with the inevitable disharmony it will bring and thrust upon us

"If it is about the number of voters in a constituency it doesn't make sense. It doesn't alter the demographic. People are unhappy all over the country even in small

constituencies. We feel this is a threat to our way of life, our Island life and our quality of life. We stand together. We often feel that we are bullied by Government and those bodies know nothing about how an Island works.

"That said someone has realised that The Isle of Wight and Anglesey should be treated as special cases — we are protected from such disruption. This alone should be reason enough not to split our Island into separate sides doomed to battle against each other."

Although larger in size, the proposed West boundary would have an electorate of just 54,712. While the East would be smaller geographically but have a larger electorate of 57,004.

A consultation is live now. Islanders can have their say here: www.bcereviews.org.uk

disappointment of failure.

And he had this message for anyone considering taking part in the DoE scheme:

"It will change you. You will meet people from different walks of life which will challenge you in many different ways, but what you

learn from them will make you a far better person; a much wiser and tolerant human being.

"If what motivates you includes adventure, decency, tolerance and faith in human nature, becoming a DoE volunteer is a natural progression."



FYTbus is a scheduled volunteer-run bus service running every weekday morning serving the communities of Freshwater, Yarmouth & Totland.

We also provide subsidised direct transport to **St Mary's Hospital, Brookside Health Centre** and other medical appointments from our area.

On Saturdays we run a regular door-to-door shopping trip from West Wight to the major Island supermarkets.

For further details of all our services or to volunteer

01983 752917 (weekdays 09:45 to 12:30)

fytbustotland@gmail.com www.fytbus.org.uk

or find us on Facebook





TD HOMECARE SERVICES ARE RECRUITING...

Join Our Expanding Team!

- ✓ Permanent full time Carers required to join our team serving clients in the West Wight area.
- ✓ Different shifts available.
- ✓ Experience is preferred but we will provide full training and uniform to the right candidates.
- ✓ Excellent rates of pay with enhancements - Salary based on experience
- ✓ Own transport is necessary with all mileage paid.
- ✓ Proof of Covid vaccination required.

Contact Clare for more information and to book an interview
Tel: 01983 641815

**3 Whittingham Place
 The Avenue, Freshwater
 PO40 9UR**



CARE AT HOME

"With our Hands & Hearts, We Care"

RECRUITING NOW FOR CARERS

- BLOCK CALLS
- COMPETITIVE RATES
- GREAT WORK LIFE BALANCE

HIGH QUALITY CARE AND SUPPORT IN YOUR HOME WITH...

- DOMESTIC CARE
- SUPPORT WITH MEAL TIMES
- PERSONAL CARE
- BESPOKE PACKAGES

CH TRAINING

CH - TRAINING OFFERS A WIDE RANGE OF ACCREDITED COURSES FOR...

- SCHOOLS
- HOLIDAY PARKS
- CARE SECTOR
- ALL INDUSTRIES

THE ISLANDS LOCAL TRUSTED TRAINING PROVIDER

www.careathomeiow.com/ch-training.html



Innovation Centre, St Cross Business Park
 Newport, Isle of Wight PO30 5WB
Tel: 01983 216400
 Email: info@careathomeiow.co.uk
 Website: www.careathomeiow.com

southern coop

Pre-paid funeral plans

*If it means everything to have your favourite song played, white lilies and a release of doves, have them.
 It's your funeral.*

Our pre-paid, inflation-proof funeral plans guarantee the way you want to be remembered and protect your loved ones from unnecessary burden and costs.

Drop in to see us today, visit us at funeralcare.co.uk or call us on 0800 243 380

£100 OFF

our pre-paid funeral plans*

Enter BEA1OW21 at: funeralcare.co.uk/funeralplans or take this coupon along to your local funeralcare home.

*Terms & Conditions: The voucher may only be redeemed against eligible Southern Co-op funeral plans costing £3,000 or more and will be deducted off the cost at time of sale. The voucher has no cash value and cannot be used in conjunction with any other discount, offer or promotion. For full terms and conditions visit: funeralcare.co.uk/funeralplanterms, request a copy from any Southern Co-op funeralcare home or by calling 0800 008 6878. This voucher is valid until 31/12/2021.

Funeral homes in:

- East Cowes
- Freshwater
- Lake
- Newport
- Ryde
- Shanklin

The co-operative funeralcare



LEGAL & FINANCIAL

The Importance of Making a Will

Many people often assume their possessions will simply pass automatically to their spouse or children and consequently don't make any plans for the future after they are gone. Often people believe their assets are too small to require a formal arrangement or legal guidance.

If you die without having made a Will, the intestacy rules apply and may not reflect your wishes. Therefore, the only certain way to ensure that your wishes are put into effect is by making a Will.

Under the intestacy rules your spouse will receive a statutory legacy of up to £270,000 and your personal possessions. If your estate is worth more than £270,000 the balance is split with your children and so your whole estate will not necessarily all pass to your spouse.

Although it is increasingly common for partners to live together without marrying or entering into a Civil Partnership, at present the intestacy rules do not recognise these arrangements.

A Will is a legal document that allows you to pass on your possessions to benefit others after your death, giving you control over what happens to your money, possessions and property after you die.

Therefore, if you live with your partner and die without having made a Will, your partner will not automatically inherit any of your estate and would have to make a claim on your estate. This could mean them having to fight for their home at a time when they have just lost their life partner.

Family arrangements are also becoming more complex. If you have children from a previous relationship you can use a Will to protect assets for those children. For example, a Will can give a second spouse the right to occupy the family home, while protecting the capital for children of an earlier relationship.

A Will can also be used to protect assets against future care fees. If your estate passes absolutely to your spouse or partner on your death and your spouse

or partner subsequently need care then your estate could be used to pay those fees. A trust can protect your capital for your children or other beneficiaries whilst allowing your spouse to remain in the family home and benefit from the income from any other capital.

What if you wish to leave gifts to charities or other organisations? Again, under the intestacy rules, this will not happen and so the only way to make sure your chosen beneficiaries do benefit is to make a Will.

Everyone's situation is unique, and the best way to ensure your wishes are in place is to seek professional legal advice. A solicitor is highly regulated and insured. They will make sure that they understand your situation to ensure that you are given advice appropriate to that.



April Newton is an Associate Solicitor at Glanvilles Damant specialising in Wills, Powers of Attorney, Trusts and elderly client matters. Please contact her on april.newton@gdlegalservices.co.uk or 01983 527878 for a free initial consultation.



Nurses, Carers & Support Workers

Choose your own shifts in care homes across the Isle of Wight.

Join Florence Flex to:

- Choose from 100s of shifts
- Pick shifts in one click
- Submit timesheets online
- Get paid quickly and easily
- Access free training
- Get a free DBS check
- Join a 50,000+ community
- Be fully supported by our team



Take control today.

Sign up free at www.florence.co.uk

Call: 020 3911 2555 Email: hello@florence.co.uk



wellbeings-feelbetter.com

The Island's exciting new therapy centre

Languard Manor, Shanklin PO37 7JB

Total relaxation and wellbeing

Abdominal, fertility and digestive treatments

Get out of pain, Fascial Fixit treatments

Postural alignment and increased mobility



Ix Chel

Maya Massage

Angie Ix Chel

Reflexology

Arvigo Maya Massage therapy

Aromatherapy massage



Keith Graham

Cert. Advanced Rolfer

Fascial Fitness trainer

OMT Advanced spinal

manipulation

Senior Instructor TCUGB

please call first to make an appointment

Angie: 07399 451 644 • Keith: 07799 333 804

Funeral Plans from William Hall Independent Funeral Directors

Planning ahead for peace of mind

A funeral plan provides peace of mind for you and those you care about. You make the arrangements in advance, specify your wishes and take care of the costs.

We recommend funeral plans from Golden Charter, the UK's largest independent plan provider. With a Golden Charter plan you'll benefit from:

- Paying at today's prices for a service you may not require for many years
- A guarantee of nothing more to pay for our services
- A choice of a range of plans – with the option to personalise your own
- The reassurance that your wishes will be carried out, sparing your loved ones uncertainty and distress

Taking out a funeral plan is one of the most thoughtful decisions you could make.

To find out more about Golden Charter funeral plans from William Hall, please return the coupon below, phone us, or call in. REF: B 53

Mr/Mrs/Ms: _____ Initial: _____ Surname: _____

Address: _____

Tel no: _____

Send to: William Hall Independent Funeral Directors, Sunnybrow
Winford Road, Newchurch, Isle of Wight PO36 0JX

Tel. 01983 868688



Golden Charter
Funeral Plans



£150 of M&S Vouchers

Awarded to every new Golden Charter Funeral Plan taken out between 1st July to the 31st July 2021 with William Hall Independent Funeral Directors, Sunnybrow, Winford Road, Newchurch PO36 0JX. www.williamhallfuneraldirectors.com

*"We don't just sell hearing aids,
we provide total hearing care"*

Wight Sound Hearing

Registered Healthcare Professional

Colin Stockdale RHAD MSHAA AIHHP (Executive Member)

12 High Street, Shanklin PO37 6LB

Tel 01983 86 59 59

All Hearing Tests and Consultations are FREE

Latest Digital Testing & Fitting Equipment

Video Otoscope (see inside your own ear)

Try Before You Buy OR RENT a Digital
Hearing Aid (from £1 A DAY)

Free
Home Visits

EVERY Brand of Hearing Aid
Available in the UK

Easy Payment Plans



Have you joined Hidden Island yet?

July's treats include:

- Half price hot stone massages from Zen Spa
- 50% off Geoff Leather family portrait session and print
- Half price family passes to Amazon World



Exclusive to Hidden Island: Win with Wightlink
£100 travel voucher
plus so much more!

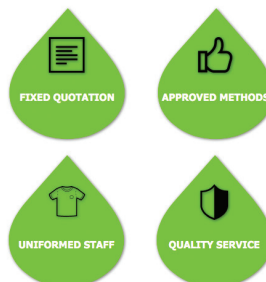
Hidden Island - Make the most of what
 the Island has to offer.

To join for free visit www.iwbeacon.com

SOUTHERN CONSERVATORY VALETING



Southern Conservatory Valeting
*use professional products to clean inside and
 out, leaving your conservatory looking brand new*



- Internal & External Conservatory Cleaning
- Premium Conservatory Valet
- Conservatory Blind Care
- Box Gutter Cleaning

★ Trustpilot
 "Providing A Trusted Conservatory Valeting
 Service Used by 100s of Customers..."



📞 0800 689 4316

www.southernconservatoryvalet.co.uk

@ southernconservatoryvalet@gmail.com



Snowdrops and Rosemary

EXCEPTIONAL PEOPLE. EXTRAORDINARY CARE

Care in *your* Home. Tailored to *your* needs

Our wonderful team can offer you the support you want, when you need it, so you can continue living from the comfort of your own home. With help from as little as half an hour a week to up to several visits a day or 24 hour support.

We are a family run business, who employ all our carers locally. As our carers are local, we provide support to clients in the Cowes, Newport and West Wight areas.

Snowdrops and Rosemary, Gurnard Pines, Cockleton Lane

📞 01983293340 ✉ contact@snowdropsandrosemary.co.uk

🌐 www.snowdropsandrosemary.co.uk

NOW HIRING



SPEND MORE TIME OUTDOORS!

OUR SIMPLICITY SERIES FEATURES A RANGE OF CANOPIES, CARPORTS AND VERANDAS HAVING BEEN DESIGNED SPECIFICALLY TO ADD **STYLE & PRACTICALITY** FOR ALL OUR CUSTOMERS



- ✓ **FULL 10 YEAR GUARANTEE**
- ✓ **ALUMINIUM CONSTRUCTION**
- ✓ **RANGE OF COLOUR OPTIONS**
- ✓ **IMPACT RESISTANCE**

**WHITE
WINDOWS**

CALL 01983 523552 FOR A FREE ESTIMATE, OR VISIT
WWW.WHITEWINDOWS.CO.UK

**JOSH KERLEY
TREE SERVICES**

✓ All aspects of tree work undertaken
✓ NPTC Qualified and fully insured

FREE NO OBLIGATION QUOTES

TEL: 07875021682
Email: info@joshkerleytreeservices.co.uk
www.joshkerleytreeservices.co.uk

**YOUNG
PLUMBING**

PLUMBING & HEATING SERVICES

**Tel: 01983 339671
Mb: 07967 225030**

www.YoungPlumbing.co.uk

STUDIOPHASE

The Isle of Wight's local TV experts
Call 404406 studiophase.com

Why choose us?

- CAI approved • Friendly, reliable engineers
- We have over 30 years of local knowledge

Freeview



freesat

sky cai

**SOS
HANDYMAN**

**FED UP PAYING OVERPRICED
TRADESMEN?**

T:07984 346635

the
Live Wire
electric shop

Open Mon-Sat 8.30am-4.30pm

Bosch Hotpoint
Beko Phillips
Creda Samsung
Electrolux Whirlpool
Dimplex & more...

Vacuum Repair Service



**Home Appliance
Spares**

Cookers

Refrigeration

Home Laundry

Henry Vacuums

Microwaves



the
Live Wire
electric shop
DOMESTIC APPLIANCES



VISA MasterCard Orchard Street • Newport • Tel: 01983 522420

Now located in new larger premises
(behind Newport bus station)

**Would you like an honest,
reliable and AFFORDABLE
police checked*
cleaner to clean your home?**

Typically

£13.50 per hour inc.

Then contact us at



TIME FOR YOU™
DOMESTIC CLEANING

As Featured on BBC 2's Working Lunch, Ch4's
'House Swap' & preferred cleaning supplier
to CH5's Cowboy Builders!

Telephone:
01983 623 123

iow@timeforyou.co.uk
www.timeforyou.co.uk/iow

*police checked cleaner upon request



THE ISLAND'S FAVOURITE...

isleofwightradio



THE ISLAND IN YOUR POCKET

- ✓ Latest news
- ✓ Listen live
- ✓ Message the studio
- ✓ Traffic, travel and weather

Download Isle of Wight Radio
in your app store



STAG LANE MOTORS

Stag Lane, Newport
522443 / 525783

Special Offer MOT £39
(Class 4 cars & motorhomes only)

SERVICING & REPAIRS TO
ALL VEHICLES (inc. HGV)

24 hr Breakdown
& Recovery



Motorbikes MOT £25



Sign up to the
Beacon newsletter

www.iwbeacon.com

VENTNOR MOBILITY CENTRE



Regain your independence...

Agents for scooters, rise/recline chairs,
stairlifts and all available mobility aids



FREE HOME SURVEY - We also Buy and Sell
- Can't come to us, we'll come to you!

Unit 4, Old Station Road, Off Mitchell Avenue,
Old Station / Tunnel, Ventnor PO38 1DX
Tel: 01983 855545

**PRE-BOOKED APPOINTMENTS ONLY
TO AVOID DISAPPOINTMENT**



**FRONTROW
GROUNDWORKS**
ISLANDWIDE

Fully insured
28 yrs experience
Reliable!

Fencing

Removed - Repaired - Replaced

All types of fencing undertaken

Quality materials used • FREE quotes



Call Andy 07817 979501
or 01983 863348

frgworks@icloud.com

PLUS Landscaping • Turfing • Driveways • Pathways • Decking
• Drainage • Tree & Hedge maintenance & removals
• Footings • Garden walls • Guttering

Solent Pools & Hot Tubs

Whether it's a Swimming Pool, Hot Tub
or Swim Spa, we'll have the answers

WE HAVE MOVED!



Due to demand we have
moved to a brand new
purpose built showroom
on Unit 4 Lake Industrial
Estate, off the Morrisons
roundabout



WE ARE
UP HERE

Tel: 01983 401800

www.solentpoolsandhottubs.co.uk

Mark Carter

Oil and Gas Engineer

Worcester Bosch Accredited Installer
Serving the West Wight and Cowes area

Tel: 619111 Mobile: 07771 557769



Gas Safe

Registered 28450

Oftec Oil

Registered C12814



- Boilers Installed, Serviced & Repaired ✓
- Heating system repairs and upgrades ✓
- Landlord Gas Certificates issued ✓
- Agas & Rayburn Serviced ✓
- Swimming Pool Boiler Services ✓
- Fires, Cookers, Hobs & Ranges installed ✓
- Power Flushes and system Cleanses ✓
- Pre purchase House Inspection ✓
- If it uses gas we can fix or replace it ✓
- Natural Gas & LPG & oil ✓

Coastal Mobility

THE ISLANDS PREMIER MOBILITY SPECIALISTS

ALSO Wheelchairs • Bath lifts • Walkers • Adjustable beds & chairs • Accessories

FREE ISLANDWIDE DELIVERY

Great deals on mobility
scooters and
lift and recline chairs



SHANKLIN 866431
56 Regent Street

NEWPORT 533500
9 St Thomas Square



Lemlec Are Recruiting!

The growth of our business is lightning fast... And now we need bright sparks to join our expanding team!

WE ARE LOOKING FOR...

Experienced Plumbing/Heating Operations Manager

- 45k a year • Company Car
- Company Pension

Gas Engineer x 1

- Gas safe registered • NVQ Level 3
- Domestic or Commercial
- Full Driving License

To apply: Please send your
cv and covering letter to

info@lemlecelectrical.co.uk

Or visit [Indeed.com](https://www.indeed.com) for more information



The Island's
CARPET & FLOORING
SUPERSTORE



OPEN 7 DAYS A WEEK

MON - FRI 9AM - 6PM

SAT 9AM - 5PM

SUN 10AM - 4PM

01983 533150

12 Hurstake Road, Riverway Industrial
Estate, Newport, Isle of Wight,
PO30 5UU (next to Jollies)

NO DEPOSIT INTEREST FREE CREDIT

Subject to status on orders over £495*

D&S Carpets are authorised and regulated by the Financial Conduct Authority. We are a credit broker not a lender - credit is subject to status and affordability, and is provided by Hitachi Capital (UK) PLC. Terms & Conditions Apply.

*Excludes fitting charges



www.dscarpets.co.uk

Rugs

Luxury
Vinyl Tiles

Wood &
Natural
Flooring

Vinyls

Carpets

THE FLORAL QUEEN

By Flo Whitaker

Roses have always beguiled us. They appear in Greek and Roman mythology, ancient Chinese writings, as well as Persian and Indian literature. Queen Cleopatra was bonkers about roses and the Empress Josephine was reckoned to have a collection of over 250 different types. Marriages and alliances have been celebrated with a showering of rose petals since the earliest times. A rosebud posy was considered a charming gift for an expectant mother, while ancient Egyptians solemnly garlanded their dead with roses. This most poetic, captivating flower has accompanied us through the centuries — from cradle to grave.

Roses are indigenous to most parts of the globe. They're a large family of approximately 300 species, (naturally occurring types) and thousands of man-made varieties. Many modern roses can trace their lineage back to historic Asian and Persian forms. They do best in a sunny location, sheltered from winds, but are tough plants that will always try to please — some types tolerate light shade or a north-facing aspect. Most are very hardy; down to -10°C, considerably more for species forms. There are groundcover types, shrubs, ramblers, climbers and small-scale

patio roses that are ideal for pots. Species roses bear pollen-rich, bee-friendly flowers and highly decorative hips in autumn. They are usually thorny characters, making them the perfect choice for a low-maintenance security hedge. Take time to consider the right rose for your location. Don't be swayed just by colour

and perfume! Research before you buy; noting height, habit and flowering time — some varieties will repeat-flower over a long season.

Before planting any rose, ensure its roots are thoroughly hydrated. Drench a potted specimen until the root ball is sodden, (it's easier to remove a pot if the soil is wringing wet). A bare-rooted plant should be soaked in a bucket of water for an hour and any damaged roots removed with sharp secateurs. Dig a hole 50% deeper and wider than the container/root ball. Put a spadeful of well-rotted manure and a spadeful of leaf mould



Species roses bear pollen-rich, bee-friendly flowers

into the hole and mix together with some of the excavated soil. Place the rose centrally in the hole and check the level before backfilling with soil. Firm in gently and give another good drink of water. Aim to plant about 5cms below the original planting depth. On a bare-rooted plant, a tell-tale line will reveal the original soil level; green-coloured stems

indicate they were above the soil, whereas brown stems were underground. Roses, particularly newly planted specimens, can 'rock' in windy conditions and may lever themselves out of the ground. Planting slightly deeper will resolve this.

Blackspot, rust and mildew are the problems most likely to affect roses. These fungal infections are caused by microscopic spores blown on the wind or carried in water droplets. Fortunately, they usually cause temporary disfigurement, not permanent damage, although a severe infestation will defoliate and

weaken a plant. Sprays can treat these conditions — follow the instructions carefully. Spray in a preventative fashion by starting early in the season when foliage is just unfurling, (even if the leaves appear clean) otherwise any dormant overwintering fungal spores will quickly infect new growth.

Regular spraying will greatly reduce, but never eradicate fungal damage. Practising good garden hygiene is the best long-term solution; a well-grown plant is better equipped to cope with pests or disease. Pick up fallen rose leaves as they are a perfect breeding ground for spores.

Apply a thick mulch every spring, adding general-purpose fertiliser or well-rotted manure. A foliar feed applied every 10-14 days throughout the summer will give a real boost — especially to pot-grown specimens. Regular deadheading will promote new flower buds. Given a little care, these long-lived plants will reward you for many years. Somewhere in a celestial realm, Josephine and Cleopatra are dreamily flicking through rose catalogues. Needless to say, they both have roses named after them. Fit for a Queen, indeed. ☺



Cherry Tree
shutters
Changing your view

**20%
SALE
NOW
ON!**

01983 640174

www.cherrytreeshutters.co.uk

Providing interior plantation shutters to cover any window style or colour including; Square, Rectangle, Circular, Arched, Bays and Patio Doors.



*Terms & Conditions Apply

Checkatrade.com

**0%
FINANCE
AVAILABLE**

BARNEY'S TYRES

Tyres at great prices!



**BUDGET, MEDIUM & BRANDED
RANGE TYRES FOR CARS,
VANS, 4X4'S & TRAILERS
ALL AVAILABLE AT LOW PRICES!**

- PUNCTURES & WHEEL BALANCING
- OPEN 8-5.30 MON-FRI & 8-1 SAT
- NO NEED TO BOOK, JUST TURN UP!
- ACCEPT CASH & CARD PAYMENTS
- UNIT 4, ALBANY CENTRE, FOREST ROAD, NEWPORT, ISLE OF WIGHT PO30 5NB



**WE CAN FIT YOUR TYRES
AT WORK OR HOME!**



Mobile fitting service - call & book a convenient time for you

T: 01983 529061

M: 07788 817511

WIN! Can you spot the differences?



COMPETITION

Take a much-needed break at The Retreat in Newport, known for its incredibly popular breakfasts. Located tucked away in Scarrots Lane, in the town centre, The Retreat is open for breakfast, lunch and main meals. Guests are welcome to sit in the sunshine or indoors in the pretty café.

All products are locally-sourced and home cooked to order and you'll receive a warm welcome from friendly staff. The café recently passed all Covid-secure measures.



THIS MONTH'S PRIZES...

T&Cs apply



Breakfast for two including drink

Courtesy of the Retreat Cafe
10 Scarrots Ln, Newport PO30 1JD
Tel: 01983 533031



Two adult Warrior Festival wristbands

Courtesy of @WarriorFest10W



Pair of Saturday Shopper tickets

Courtesy of Solent and Wightline Cruises
www.solentcruises.co.uk



Bottle of Prosecco for four

Courtesy of The Lawn Bar
www.northwoodhouse.org/event/the-lawn-bar-summer-weekends

PRIZE PREFERENCE (CHOOSE ONE ONLY):

1 ☐ 2 ☐ 3 ☐ 4 ☐

NAME:

TEL:

ADDRESS:

POSTCODE:

E-MAIL:

☐ I am happy to be contacted by the sponsors for marketing purposes

☐ I would like to receive Beacon Magazine's weekly email newsletter with more competitions

Closing date - 31ST JULY 2021

Send your entries to: **IW Beacon Competition, 8-10 Dodnor Park, Newport, Isle of Wight, PO30 5XE**

When sending your entry to us you MUST ensure that you use the correct postage. Terms and conditions available on request.

Prizes must be claimed within 30 days of the draw date. Previous winners can be found on our Facebook and Twitter pages.

Winners will be contacted by phone.

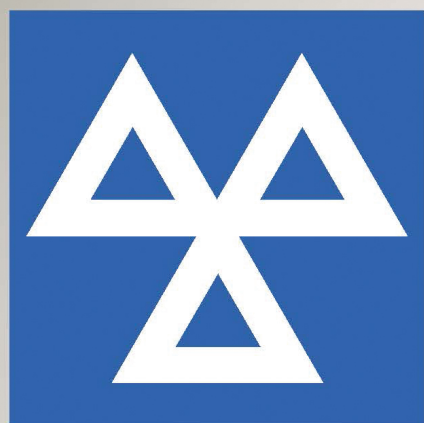
Did you know...

You can take a photo on your phone and email your entry to win@iwbeacon.com.





FAIRLEE SERVICE STATION



MOT

3500kg GW including
Hi-Tops, Long Wheel
Base, Tipper & Lutons

CARS
£30

£45
CLASS 7



Live Booking Visit:

fairleeservicestation.com

online service and MOT booking now available

Call:



01983 525410

service reception

Fairlee Service Station | Fairlee Rd | Newport | Isle of Wight | PO30 2EJ