

EAST AND
SOUTH WIGHT

Pick up your FREE copy

Beacon

July 2021

ISLAND STORY
CARNIVAL
ISLAND

WALK
THE DICKENS
LITERARY WALK

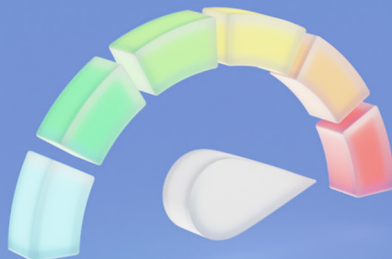
RECIPE
CARAMELISED
RUM BANANAS

Summer Time

Time to sit back and unwind

900Mb –
Yes Please!

Ultrafast broadband only
from WightFibre



wightfibre
because we care

Order online at [wightfibre.com](https://www.wightfibre.com)
or call 01983 240240

A Different Kind of Broadband Full-fibre • Ultrafast • Future-proof



GreenMeadows
Independent Island Living

**COLWELL ROAD
WEST WIGHT**

OVER 55,
BRAND NEW
EXTRA CARE
SHARED
OWNERSHIP
APARTMENTS



SHOW APARTMENT AVAILABLE TO VIEW SOON

All residents can be supported by the Wellbeing Team who are there to help everyone feel settled, supported and safe; this unique Wellbeing service can respond to your needs 24hrs a day on an unplanned care basis, enabling you to live independently in your own home.

To feel part of a community, there is access to activities every day such as:

- **Minibus outings**
- **Scheme shop**
- **Hairdressers**
- **Beauty treatment room**
- **Reception desk 7 days a week**
- **Laundry room**
- **Fitness room**
- **Communal lounge**
- **Dining room**

All apartments are built and equipped with emergency pull cord which connects you to 24 hours a day staff on site who can respond in a serious emergency for your peace of mind.

For more information regarding shared ownership,
or to speak with someone regarding renting,

**Please call 0808 1699788 or
email newhomes@hrdiw.co.uk**



In Partnership with





Welcome from the EDITOR

Summer is here. And with it comes long evenings, al fresco dining and days down by the beach. It's my favourite season.

We hope the weather is kind and gives us lots of time outdoors, as I think we all need it.

If you're heading to the beach, why not pack a copy of Beacon in your bag to read while you relax. We've filled this edition with some seriously tasty recipes, a look back at Isle of Wight carnivals of times gone by and a new Dickens literary walk in Ventnor, as well as lots of news, events and much, much more.

We hope you enjoy it.

Amy Shephard

Editor amy.shephard@iwbeacon.com

Picture by Ruth Crafer

7



Photo courtesy of Molly Anderson Instagram: molly_the_historian



18

5

Walking the Island:
Dickens Literary Walk

7

When John Hannam
met Annette Badland

9

Recipe: The Ultimate
BBQ Hot Dog

11

Recipe: Caramelised Rum Bananas

12-13

The Entertainment Guide

14-15

Eddie Minghella Turns 100

18-19

Carnival Island

20-25

News from your area

31

Gardens: The Floral Queen

35

Spot the Difference competition



31

Beacon
MAGAZINE

IW Beacon Media Centre, 8-10 Dodnor Park, Newport, PO30 5XE

CALL US
01983 433112

FACEBOOK
iwbeacon

TWITTER
@iwbeaconmag

VISIT US
iwbeacon.com

INSTAGRAM
@beaconiow

EMAIL
hello@iwbeacon.com

totalsensemedia

Sandham Gardens

Sandown Bay

Please find our prices online at
Sandhamgardens.com

READY TO LEAVE SCHOOL?

A TRAINING PROGRAMME WITH HTP IS THE WAY FORWARD – NOW MORE THAN EVER

If you're preparing to leave school, our programmes provide great opportunities to get working towards a dream career. Come to HTP for a change and a fresh start.

2021 is a year like no other. Young people leaving school or college are looking for the best way to train for a career or get straight into the world of work.

Our wide range of Full-time Courses provide you with the skills, experience and qualifications to progress directly into a job. Or if you're eager to get out there straight away, why not start a workplace Apprenticeship? It's a much faster way to progress your career than by doing A-Levels or going to university.

We have a proven track record in helping young people to kickstart their careers. Apply to HTP now and we can find you a course or Apprenticeship that will inspire you.

Try something new. Your future starts here!

Start as soon as you're ready • No tuition fees • Earn while you learn!

**APPLY
NOW**
It's easy!

Visit http.ac.uk • Call 01983 533926

 **HTP** APPRENTICESHIP
COLLEGE



Winterbourne, where Charles Dickens stayed in 1849. During his stay, Dickens wrote some of his novel, *David Copperfield*.



A new walk, celebrating the life and work of Charles Dickens has been created in Bonchurch and Ventnor.

Curated by the owners of the beautiful Haviland Cottage, the walk takes you past key locations which map Dickens' stays in Bonchurch and Ventnor between 1838 and 1860.

The creators have researched the local history, with help from Ventnor Heritage Centre, Bonchurch Community Association, Members of the Charles Dickens Fellowship, and others.

"In 1849, the author Charles Dickens moved to Bonchurch, Isle of Wight for a long summer. During this time, he enjoyed walking around Bonchurch village, Ventnor and the surrounding areas. He also got to know many people in the local community which influenced his writing. In fact, a few of these local

characters found their way into some of his most celebrated literary works which have become some of the world's favourite books *David Copperfield* (published 1850) and *Great Expectations* (published 1860)," says Alan Cartwright of Haviland Cottage.

Starting at Haviland Cottage, on Madeira Road, you'll retrace the steps that influenced many of Dickens' literary works. Each key location is marked by a blue plaque.

The shorter version of the walk takes just over an hour to complete and is quite hilly, so bring your best walking boots.

The walk takes you past key locations which map Dickens' stay in Bonchurch and Ventnor between 1838 and 1860.

If you'd like to challenge yourself a little further, a longer route takes more than two hours and heads along the coastal path, from Bonchurch to Ventnor Esplanade. You'll head up the steep hill towards The Royal Hotel and Ventnor Cemetery. You could stop in at the brilliant Ventnor Heritage Museum along the route if you wish to make a day of it.

Walk courtesy of Haviland Cottage, a luxury holiday cottage nestled in pretty Bonchurch village, near Ventnor.

Organisers would love those who enjoyed the walk to consider donating £3 to the Bonchurch Community Association, which provides village upkeep and community events. To see the route in more detail or find out how to donate, visit www.havilandcottage.com/dickens.



Haviland Cottage, where the walk begins



Walk Time: 1-2 hours

Sandown Nursing Home

Sandown Nursing Home is run on a welcoming and informal basis. Our philosophy is very much to make our residents feel part of the family whilst receiving quality nursing care.

Our highly skilled and friendly staff are committed to looking after the residents needs and ensuring that privacy, dignity, independence and choice are respected.

We provide quality nursing, palliative and respite care in a comfortable and professional environment.

A warm welcome is guaranteed.



Tel (Nurses): 01983 402946 Tel (Office): 01983 408574
E-mail: admin@sandownnursinghome.co.uk
www.sandownnursinghome.co.uk

Sandown Nursing Home, 28 Grove Road, Sandown PO36 9BE

Stay at home with quality care you can trust

We believe that **home is where the heart is**. We strive to **maintain your independence** so you can continue to enjoy the **comfort** and **security** of your own home.

Our experienced care teams will create a bespoke care plan to suit your needs; whether you require **personal care, companionship, domestic visits** or something else, our carers deliver care when, where and how you wish to receive it.

Contact your local branch today
for a free quote **01983 450 023**



www.apexprimecare.org

A day to remember with

ANNETTE BADLAND

Back in 1981 when *Bergerac* first came to BBC TV, it was no surprise when John Nettles received sack loads of fan mail. I, like millions of other men, rather fell for the more rubenesque charms of the Bureau receptionist Charlotte, played by the gorgeous Annette Badland.

By John Hannam

I waited fully 37 years for an interview — and it was well worth it. I finally caught up with Annette in 2018, backstage at London's Shakespeare's Globe Theatre, on the banks of the Thames. She was then appearing in *A Winter's Tale* and rehearsing for a new play called *Eyam*. Being such a lovely lady, she gave up part of her lunch break to talk to me.

By that August day in 2018, long after Charlotte in *Bergerac*, Annette was known by millions as Margaret Blaine in *Doctor Who*, Glenna Fitzgibbins in *Outlander*, 'Babe' Smith in *EastEnders*, Hazel Woolley in the *Archers* and Fleur Perkins, the pathologist from *Midsomer Murders*.

Annette was spotted playing a one-off character in an episode of *Shoestring* and that led directly to Charlotte in *Bergerac*. In all she played in 29 episodes. You can catch up with all of these on BritBox, the TV streaming service.

There is no doubt she made a bigger impact than expected in the series and her huge fan mail was such an added bonus.

Her earliest ambition, after leaving the East 15 drama school, was to work for the Royal Shakespeare Company. She has achieved that honour on numerous occasions. Her stage credits are amazing.

"I have never dreamed of being a star or very famous. I just wanted to do my job to the best of my ability and enjoy so many different spheres of the business. I love the chance of playing so many varied characters," said Annette.

In the early days she worked in comedy shows with Hale and Pace and Dick Emery, played four different characters in *The Bill* and was such a

hit in two series of *Happy Families*. Men of a certain age still tell her they rushed home from school just to see her in that series. Playing Mrs Dooley in the *Queen's Nose* also won her many new fans.

Back in 2014 she joined *EastEnders* as the maternal aunt of Shirley, Tina and Mick Carter. She was brought in to reinvigorate the show's older generation. She had some great storylines working alongside Timothy West (as Stan Carter) and Danny Dyer (Mick). Babe, who had never really been loved, became a wicked aunt who was jealous, bitter and revengeful.

Back in 2014 she joined EastEnders as the maternal aunt of Shirley, Tina and Mick Carter

Annette's character was hated by so many fans of the show and this even led to death threats in real life. The police were involved in one particular incident, which certainly frightened her. Obsessed fans who passed her in the street would openly shout "we hate you." Realising that some people really thought she was Babe Smith and not Annette Badland was also quite scary.

In fact, she has never been written out of the



Picture by Ruth Crafer

script so Babe could well emerge again.

In *Midsomer Murders* she has the dream part of Fleur Perkins, the pathologist. In so many of the shows she has all the best one-liners — and makes the most of them.

Her car status has also gone up from a three-wheeler in *EastEnders* to a black convertible Jag in *Midsomer*.

Look out for her soon in a new series called *Whitstable Pearl*.

The greatest moment in her life? Flying in a Spitfire from Biggin Hill soared well above any acting role, particularly when she took the controls for a short time and did a victory role. It was an emotional experience for her in many different ways. She won the trip in a competition.

Annette, who has recently been seen in TV's *Ted Lasso*, was such a great help to me after the interview, which can be listened to from all the leading podcast sites. In less than an hour I had another booked with Joan Armatrading at the Electric Airwaves Studio in central London. She told me of a shortcut across the Millennium Footbridge over the Thames to the nearby St Paul's underground station. After crossing the bridge I just couldn't find the station. Thankfully, a very well groomed friendly guy was more than happy to be stopped and he quietly directed me straight there. I instantly thanked him and being a little stressed to get to Joan on time, I didn't realise until five minutes later that my saviour had actually been David Tennant. ③



As Babe in EastEnders

Image: BBC.

Join over 100 business leaders

who benefitted from the Solent LEP's
Local Business Network Programme
(Peer Networks) in 2020

solentlep.org.uk



£10.00 OFF YOUR NEXT MOT



WESTRIDGE GARAGE

01983 562717 / 562160

westridgegarage.co.uk

Brading Road, Ryde, Isle of Wight, PO33 1AY

This voucher cannot be used in conjunction with any other reduced price MOT offer.
(rrp £54.85). Exp 30th June 2021



Nurses, Carers & Support Workers

Choose your own shifts in care
homes across the Isle of Wight.

Join Florence Flex to:

- Choose from 100s of shifts
- Pick shifts in one click
- Submit timesheets online
- Get paid quickly and easily
- Access free training
- Get a free DBS check
- Join a 50,000+ community
- Be fully supported by our team



Take control today.

Sign up free at www.florence.co.uk

Call: 020 3911 2555 Email: hello@florence.co.uk



COVID-19 PCR TESTING ON THE ISLE OF WIGHT



From its Newport based clinic, NL Clinic Isle of Wight offer a
fast and accurate service for fit to fly, test to release and 2/8
day testing.

TESTS AVAILABLE 7 DAYS A WEEK

Our Services

- Fit-to-fly from £69
- Test-to-Release from £149
- Home test kits from £60
- Antibody tests from £60
- Day 2 & Day 8 tests from £189

Why choose us?

- Multiple processing times
- Pre-booked time
- Same day available
- UKAS accredited laboratory

T: 0330 025 2028

www.nlcliniaciow.co.uk

62 Crocker Street, Newport, Isle of Wight, PO30 5DA

TOM KERRIDGE'S ULTIMATE HOT DOG

Inspired by the festive favourite pigs in blankets, Tom Kerridge's ultimate barbecue hot dog is wrapped in bacon and topped with caramelised onions, melted cheese and mustard mayo.



SERVES

4

INGREDIENTS

For the barbecue burnt onions:

3 large onions, finely sliced
3tbsp vegetable oil

For the pigs in blankets:

4 jumbo sausages
2tsp (heaped) mild curry powder
12 rashers of steakly bacon

For the German mustard mayo:

100g thick mayonnaise
40g German mustard
3tsp finely chopped shallot
10 cornichons, finely sliced
2tbsp dill, finely chopped
Salt and freshly ground black pepper

To assemble:

4 long hot dog rolls
8 large slices of dill pickle
8 thick slices of smoked Bavarian cheese
A bunch of spring onions, green part only, finely sliced

METHOD

1 To cook the onions, place a cast-iron pan on the hot barbecue and add the oil. When it is hot, add the onions with a generous pinch of salt. Stir well and cook for about 20 minutes until softened, dark and caramelised.

2 Meanwhile, prepare the sausages. Poke a metal skewer through the length of each sausage and lay the skewers on a tray. Season with the curry powder, trying to get an even coating all over the sausages. Wrap each one in bacon, using three rashers per

sausage, and secure the bacon with a couple of cocktail sticks.

3 Lay the bacon-wrapped sausages on the hot barbecue and cook for about 10 minutes, turning every minute or two. While they are on the barbecue, mix the German mustard mayo ingredients together in a bowl, seasoning with salt and pepper to taste; set aside until needed.

4 Once the sausages are cooked through, lift them off the barbecue and place on a tray. Remove the cocktail sticks and metal skewers.

5 To build the hot dogs, cut the rolls through the middle and spoon in plenty of caramelised onions. Add the bacon-wrapped sausages and top with the pickle slices and cheese.

6 Place the hot dogs on a sturdy baking tray on the barbecue, put the lid on and leave for a minute or two so that the cheese becomes all gooey and melted. Transfer the hot dogs to plates and spoon on the German mayo. Scatter over the spring onions for freshness and serve.



ISLAND ESSENTIALS FRESH & HANDMADE WITH FREE DELIVERY!



GRACESBAKERY.UK/SHOP - 01983 566868



SOLENT & WIGHTLINE CRUISES

EVERY SATURDAY & SUNDAY (weather depending).

Departs Thetis Wharf, Cowes (next to the Chain Ferry) at **0930 hours** to Gunwharf Quays, Portsmouth. Returning at approximately **1700 hours** from Gunwharf Quays back to Thetis Wharf, Cowes. (Please listen out for announcements for exact time). **Adults £9 / OAPs £8 / Children £7.**

Price does not include admission to attractions

Booking is essential before travelling.

Call us on 01983 564602 or go to our website www.solentcruises.co.uk to book and pay online.

Sailings are subject to any COVID restrictions in place at the time.

Please contact the office to confirm



FACE MASK to be worn at all times

Victoria Antiques Shanklin

FREE Valuations on coins, banknotes, medals, also silver & gold items such as boxes, jewellery & pocket watches. We will make you an offer on all of the above if you wish.



We can pay you by cash, BACS, Paypal or cheque.

Find us at 50A Regent St, Shanklin
PO37 7AE. Tel: 01983863632
(open Monday to Friday 10am - 3pm - no weekends)

PLEASE CONTACT US TO MAKE AN
APT OUTSIDE OPENING HOURS



The Vine Inn

WE'RE BACK!

GOOD FOOD, GOOD BEER, GOOD TIMES!
Family Friendly and Family Run



**DAILY FRESH
PIZZA SPECIALS**



EXTENSIVE OUTSIDE SEATING AREA

Our Special Offers!

Steak Friday from £7.75

Light Bites Mon - Thurs

12-5pm 2 for £10

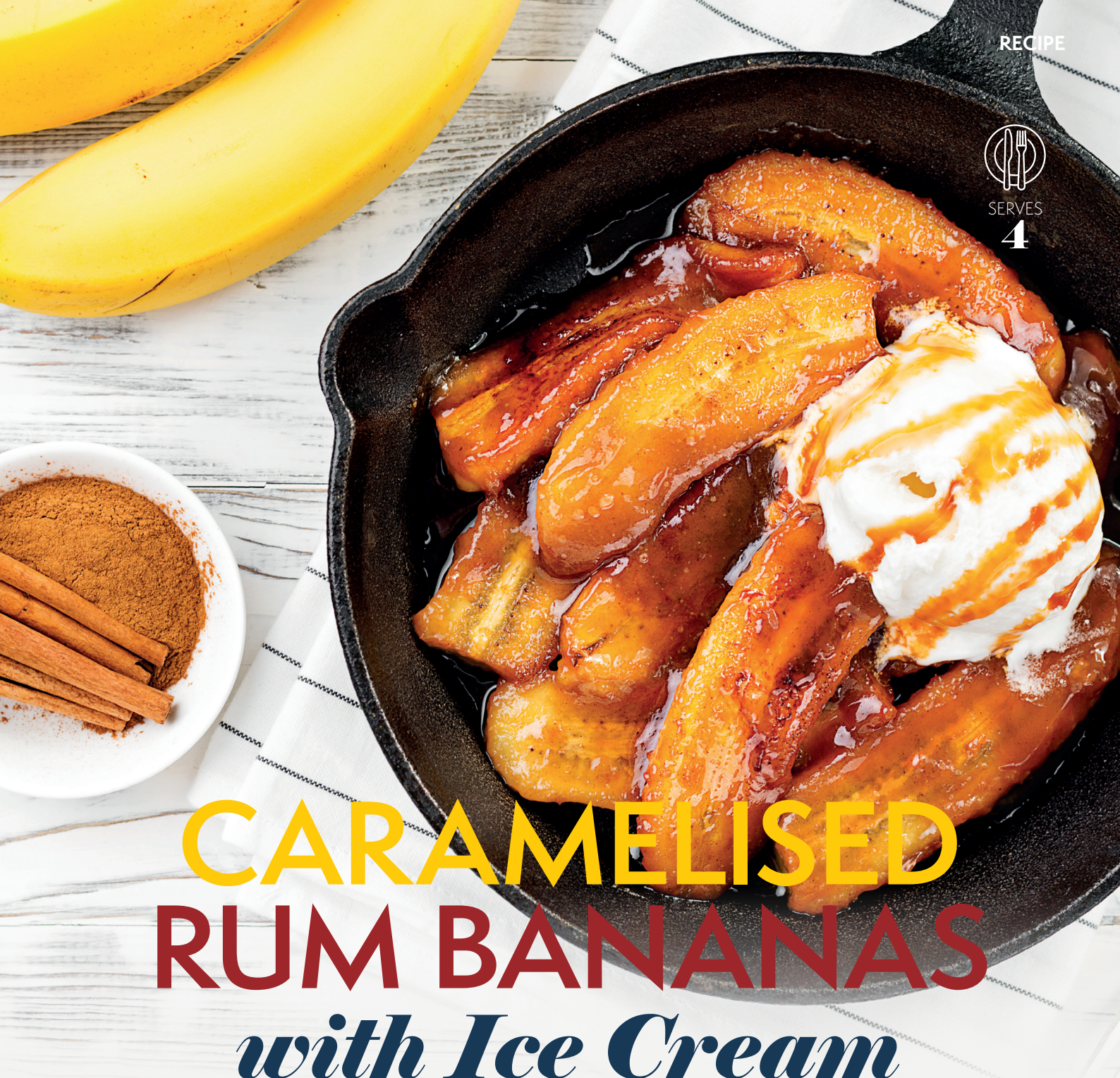
Booking Advised



48 UPPER GREEN RD, ST HELENS, RYDE PO33 1UJ

01983 872337





CARAMELISED RUM BANANAS *with Ice Cream*

This simple and quick dessert by Adele Trathan can be made two ways; on the stove, or over a hot barbecue if dining al fresco. Keep it in mind for a swift and spectacular sweet treat requiring minimum time investment

INGREDIENTS

4 ripe bananas (not overly ripe/brown), peeled cut in half lengthways
50g (2oz) butter
100g (4oz) caster sugar
Pinch of grated nutmeg
½ tsp ground cinnamon
2 tbsp rum
160ml (5fl oz) coconut cream
Ice cream to serve

METHOD

1 Melt the butter and sugar together in a large skillet or frying pan over a low to medium heat, before adding the nutmeg and cinnamon and stirring the syrup mixture until the sugar is dissolved and beginning to bubble. Continue to simmer and stir for about another two minutes.

2 Add the banana pieces, tossing them in the syrup and coating all sides of the bananas. Continue to simmer until they are caramelised and golden.

3 Add the rum and turn the heat up, gently swirling the pan to warm the rum, which should flame with the heat. This will remove

most of the alcohol content and leave the luxurious rum flavour intact. Continue cooking until the flame dies out then pour in the coconut cream and stir to combine.

4 Serve two banana portions per person with a good scoop of ice cream and generous drizzle of the rum sauce. Sweet!



18TH JULY
SANDOWN
AIRPORT

Rainbow Run with extra bubble fun

Wessex Cancer Trust is adding bubble fun to this year's Rainbow Run — in celebration of the charity's 40th birthday.

The popular family fundraiser, featuring giant inflatables and colour stations, will this year include two new bubble stations, making it more chaotic and colourful than ever before!

The event, which is once again sponsored by ARID Design and Management Consultants, will also include live music, food vans and a licensed bar.

You can sign up at www.wessexcancer.org.uk/event/rainbow-2021

All participants will receive a medal for taking part.

Northwood House Tea Garden

The Northwood House Tea Garden in Cowes is open again on Sundays throughout the summer from 11am-5pm.

There's nothing more British than enjoying a cup of tea and a delicious slice of cake or a cream tea on the lawns of a grand manor house, so gather some friends and family and head to Northwood House.

Covid-safe policies are in place for your peace of mind.

More information at northwoodhouse.org



Woodland Sessions to feature Katie Melua and Tom Allen



Top entertainment and big stars return to the Isle of Wight this summer at Robin Hill's new event, The Woodland Sessions.

The event, between July 15th-17th, is a series of intimate outdoor concerts, taking place in the park's unique Woodland Amphitheatre — the Island's largest seated venue. It's being billed as 'exceptional talent in an exceptional setting'.

Kicking off the line-up is Woodland Sessions COMEDY. Hosted by Tom Allen and held on the evening of Thursday July 15th, the night stars top comedians Rich Hall, Seann Walsh and Maisie Adam.

Friday July 16th will see Woodland Sessions CHILLED, featuring international star Katie Melua performing a stunning and exclusive acoustic set.

Finishing off the run on Saturday July 17th is Woodland Sessions PARTY with the UK's biggest 90s dance covers band and festival favourites, Rhythm Of The 90s, getting the summer party started!

Gates open at 6.30pm and all evenings will start with drinks at the beautiful Woodland Ponds.

Capacity is limited to under 1,000 per night and all shows will comply with the latest COVID regulations. Tickets available at: www.robin-hill.com

15TH - 17TH
JULY



The Entertainment GUIDE

Visit iwbeacon.com to see our full events guide

Teachers go head to head in charity match

A one off teachers football match is going ahead to raise money for an Isle of Wight charity.

Cowes Sports FC will host the game, which will be the first of its kind, between Secondary School and Primary School teachers.

PE teacher at The Bay Secondary school and semi-professional Cowes Sports player Gareth Bricknell said The Wight Brainsy Bunch is the chosen charity because it forms part of his fundraising before he runs a London marathon in October.

The Wight Brainsy Bunch provides a support network and financial assistance to local families affected by Brain Tumours.

There will also be live music, food and a raffle at the event.

The match kicks off at 11am on Sunday July 11th. Entry is £3 for adults and £1 for children.

If you are a teacher and would like to be involved or a spectator who'd like more information please contact Gareth via email (gbricknell@bayceschool.org) or by telephone (01983 409121).



11TH JULY
11AM

Dash and Splash

Dash and Splash is a 5-kilometre dash along the length of Sandown Bay on the Isle of Wight. Starting at Shanklin Rowing Club to Yaverland, Sandown.

This beautiful area has the largest bay on the Island which, at low tide, offers a unique run along the hard sand. There are 43 groynes in total to negotiate along the 5-kilometre run, most of which are a straight run through large gaps. The remaining 14 will be splashed around, which at low tide will be mostly ankle deep. Two groynes could be waist deep, these will have marshes in the water.



Dash and Splash is a fun run and not a race! You may run/walk and raising money for Aspire, Ryde, a charity that works within the Island community and worked tirelessly through the Covid lockdown, supporting those vulnerable Islanders with food parcels, hot meals, prescription deliveries and daily supportive phone calls.

To register for this race go to dashandsplash.org.uk

Tickets: Adults £10, child £5. Under 11 years must be accompanied by an adult.

Every participant gets a medal.

14TH
AUGUST
9.15AM

Impromptu Shakespeare at Ventnor Fringe

Sad that Shakespeare hasn't written anything new for over 400 years?

Well, hold onto your doublets, ruffs and trunk hose. The Bard is back! With story and verse improvised in the moment, enjoy a riotous new Shakespeare play every time – performed by Impromptu Shakespeare's whip smart cast.

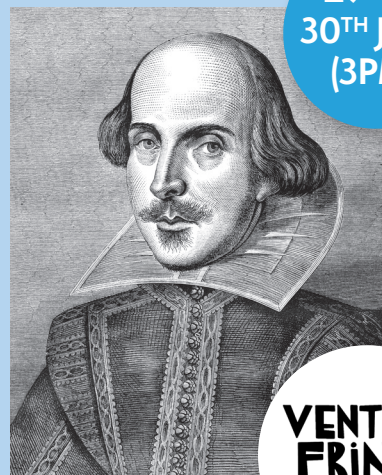
Packed with priceless wit, lyrical smarts, romance, and a dash of double-crossing, this leading ensemble do the Bard proud with a brand new one-act hit every time, inspired by audience suggestions.

It's perfect for families with children (age guidance 10+) with its winning combination of accessible irreverence whilst striving to be as true as possible to Shakespeare. The cast are not only leading theatrical and comedic improvisers but have a broad array of education and experience in classical text: dissertations on Shakespeare's works, classical acting training and a multitude of acclaimed Shakespeare credits (including with Shakespeare's Globe).

www.impromptushakespeare.com

Venue address: The Magpie, Ventnor Park, Park Avenue

Ticket price: £10/£8. Age guidance 10+



29TH &
30TH JULY
(3PM)

VENTNOR
FRINGE
ISLE OF WIGHT

Jack Up The Summer

Safe, relaxed & friendly

Relive the good times! The Island's community retro festival is all set to bring live music back on 6-8th August. Reunite with friends & family

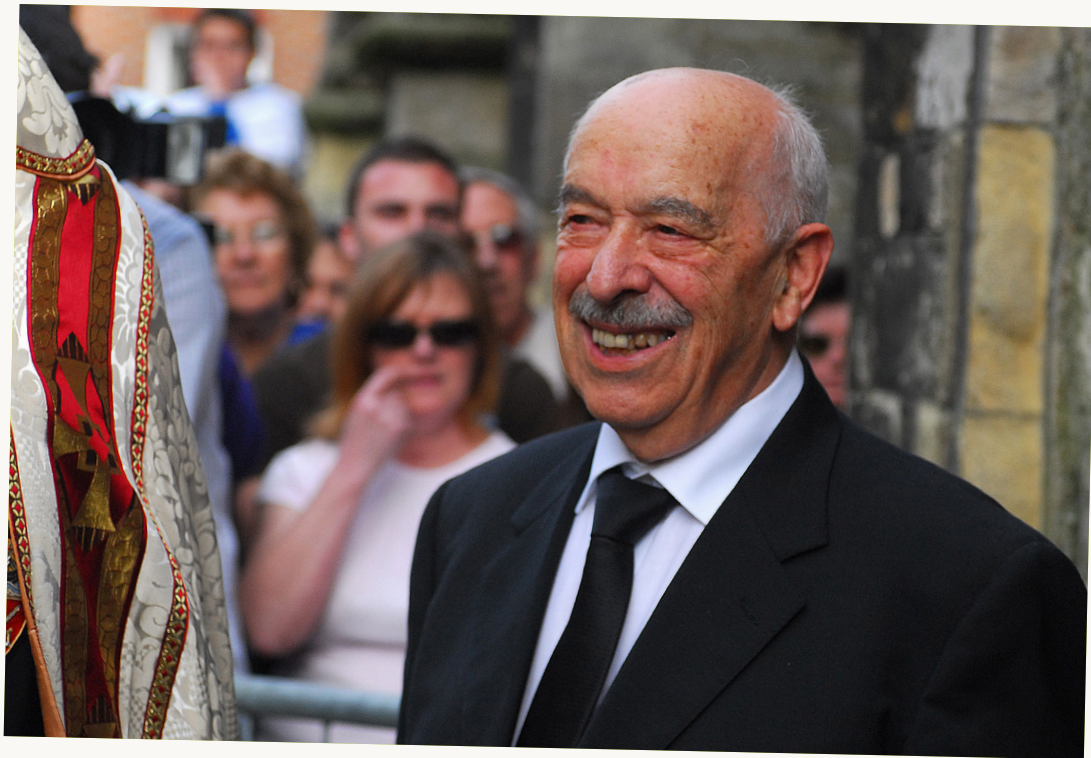
in a safe, outdoor environment with plenty of green space for everyone to spread out. Lie back and soak up the sounds of Heather Small, Heaven 17, Strangler's frontman Hugh Cornwell, Aswad, From The Jam, Dario D, Phats & Small, celebrate Queen's greatest hits with The Bohemians, Abba Chique, Black Lace, Ska'd For Life and more!

Centrally located at North Fairlee Farm Newport, with great value prices starting from only £15 and FREE entry for kids, it's time to finally give yourself something to look forward to this Summer whilst helping to support a wide range of local charities & small businesses!

jackupthesummer.co.uk



6TH - 8TH
AUGUST



EDDIE MINGHELLA CELEBRATES 100TH BIRTHDAY

The founder of the world-renowned Minghella ice-cream, Edward Minghella, celebrated his 100th birthday on June 21st.

By Mal Butler

Over the last eight decades living on the Island, Edward Minghella has worked for countless charities and promoted civic causes.

His many achievements include him being made a Freeman of Ryde five years ago while he was a former Deputy Mayor of Ryde and is a Life President of the Chamber of Commerce.

Edward, was born in Coatbridge, Glasgow in 1921. His mother was British born (but of Italian heritage), and his father, Antonio, hailed from Cassino in southern Italy.

He was the eldest of four children. The young family moved from Glasgow to Paris, where Edward's father was an electrician. However, in 1926 Antonio died of a mysterious fever, leaving his wife with no income and four mouths to feed. In desperation, she turned to the care of relatives in Italy.

Here, Edward shone at elementary school, winning a scholarship to secondary school worth 25 lire, which would pay for shoes and uniform. But the family

was hungry, so Edward had to collect the money, but it went towards food, not uniform, and he was sent to work in the fields, helping a farmer tend buffalos.

His schooling had ended with only three years of elementary school. Hunger

remains a recurring theme when he recalls those years.

Just as the war was beginning, Edward and his younger brother, Vic, being British born, were invited back to the UK to work in an ice cream factory in Portsmouth.





Writer and film director, Anthony Minghella
— Eddie and Gloria's late son.



Eddie with his Grandson,
Ben Minghella-Giddens

Edward spoke mostly Italian, with a smattering of French from his early years, but as a British subject, he was called up joining the Royal Army Medical Corps.

After the War, he returned to Portsmouth and found himself chaperoning his boss's son, who was 'courting' a girl in Ryde. The girl, too, had a chaperone — her sister, Gloria.

And it was the two chaperones who fell in love with the couple marrying in St Mary's Church, Ryde when he was just 19.

Edward began working in the family's cafe, The Mayfayre, in the High Street, and invested his demob pay to create a small ice cream factory in the back.

Their businesses expanded, and they bought the shop next door, and, over the years, several buildings at the rear, off George Street, behind the Commodore Cinema. For the first years of married life, Edward and Gloria lived above the shop, only moving to their house, in Northwood Drive, in 1960.

His ice cream became legendary on the Island and across the country, and was to be found in supermarkets up and down the land, including Harrods and Fortnum & Mason. He won countless prizes and prided himself on using the finest natural ingredients at a time when such things were not as commonplace as they are today.

But Edward and Gloria were known for more than their ice cream. Their cafe, restaurant and hotel business opposite Woolworths was a landmark in its heyday, and it's safe to say they were pillars of the community.

They were both civic-minded, and served as independent councillors for decades. Edward became the Deputy Mayor of Ryde Borough Council in 1970, just before the reconfiguring of the local authorities.

He was a governor of many Island schools and, in his role as President of the Island's branch of Save The Children, he hosted a major fundraising event, welcoming the charity's patron, HRH The Princess Anne to Carisbrooke Castle in 1978.

Some of Edward's successes as a councillor are given now — welcoming the Hovercraft service to Ryde and the rebuilding of the sea defences.

Edward is also a current active member of the Island's Catenians, an association for Catholic men.

His service to Ryde over more than 65 years was acknowledged in 2015 when he was made a Freeman of Ryde. Perhaps for his 100th birthday, he will exercise the right conferred by his freeman status to drive sheep up the High Street!

Eddie himself, felt the big day was no different to any other, saying: "I don't feel any different, really. I exercise the same and I eat the same. I try my best in life and I have the love of my family and friends.

"I think I have been pretty lucky. I lost my father when I was five and felt like I had been orphaned but I got over that and went on to have a full life.

"I have always believed in being kind and being fair and doing the right things at the right time."

No account of Edward's life could fail to mention his family. Gloria, his wife and business partner, was equally known for her contribution to civic life, sitting on the councils for many years, becoming Mayor of Medina in 1980, as well as serving as a magistrate, and Deputy Lieutenant of the Island — efforts which were rewarded in 2007 with an MBE for services to the Island.

They had five children with eldest daughter, Gioia, followed very much in both their footsteps, running the ice cream business over many years, and serving as the Island's High Sheriff in 2019.

Their late son, Anthony, was known internationally for his work as a writer and film director, and never forgot his Island roots. In his acceptance speech at the Oscars in 1997, he held


his Oscar aloft and declared it was 'A great day for the Isle of Wight', perhaps to the bemusement of Hollywood!

Anthony was made the first Freeman of the Isle of Wight in 1998. Edana, Loretta, and Dominic are also well-known Islanders who are proud of

their heritage. In October this year, Loretta will become the first woman Master of Clare College, Cambridge — returning to the college she attended as an undergraduate after Medina High School in 1982.

Edana is a famous jazz/blues singer and writer while Dominic is a television producer and screen writer.

As well as his children, Edward now has twelve grandchildren and five great grandchildren, and the family will get together for a private party. A bigger celebration has been postponed because of the Covid restrictions and it is hoped to be held in the near future.

As he looks back on his life, and particularly as he recalls his own early years of poverty and hunger, Save The Children remains a charity close to Edward's heart. **For his birthday, he has set up a Justgiving Page for donations in lieu of gifts: www.justgiving.com/fundraising/EdwardMinghella.** 

His ice cream became legendary on the Island and across the country, and was to be found in supermarkets up and down the land, including Harrods and Fortnum & Mason

VENTNOR MOBILITY CENTRE



Regain your independence... 

Agents for scooters, rise/recline chairs, stairlifts and all available mobility aids



**FREE HOME SURVEY - We also Buy and Sell
- Can't come to us, we'll come to you!**

Unit 4, Old Station Road, Off Mitchell Avenue,
Old Station / Tunnel, Ventnor PO38 1DX
Tel: 01983 855545

**PRE-BOOKED APPOINTMENTS ONLY
TO AVOID DISAPPOINTMENT**

*"We don't just sell hearing aids,
we provide total hearing care"*

Wight *Sound* Hearing

Registered Healthcare Professional
Colin Stockdale RHAD MSHAA AIHHP (Executive Member)

**12 High Street, Shanklin PO37 6LB
Tel 01983 86 59 59**

All Hearing Tests and Consultations are FREE

Latest Digital Testing & Fitting Equipment

Video Otoscope (see inside your own ear)

**Try Before You Buy OR RENT a Digital
Hearing Aid (from £1 A DAY)**

Free Home Visits
EVERY Brand of Hearing Aid Available in the UK
Easy Payment Plans

The Marigold Royale

**Supported Living
YOUR ALTERNATIVE CHOICE TO
A RESIDENTIAL CARE HOME**



Empathy care is our CQC registered in house Care Provider, whose fully qualified staff are able to provide care packages if required. This is an optional, cost effective, person centred service that is available for our residents and the local community.

Please feel free to contact us regarding any other questions you may have on **01983 611 531** or email **info@themarigoldroyale.co.uk**

www.themarigoldroyale.co.uk

14 Great Preston Road, Ryde, Isle of Wight PO33 1DR



The Marigold Royale provides extra care accommodation which promotes and retains people's independence and life style in a home environment for those who are now finding it difficult to live independently. We are staffed 24/7 and we encourage and support people to look for ways to build social skills and reconnect with others, as this can be rewarding and can help tremendously to improve a person's general wellbeing. The Marigold Royale consists of 14 apartments most of which comprise of a Living Room, Bedroom and En-suite, with a communal Sun lounge, Dining Room, Kitchenette and Laundry Room. Each apartment has its own video call system which provides a secure environment and only allows those you wish to see enter the building.



Island Tree Services
Felling, Tree Surgery & Forestry

FREE QUOTES ISLANDWIDE!

**PROFESSIONAL TREE MANAGEMENT
FULLY INSURED AND QUALIFIED**

FORESTRY: Woodland management
FELLING: Diseased, dangerous or unwanted trees sectioned and removed
PRUNING: To reduce size, remove crossed, diseased & dangerous branches
TOPPING: To reduce wind damage or clear telephone lines
LOPPING: Removal of diseased or dangerous limbs
CHIPPING: Left onsite or removed
 References available

Call or Text Doug on **07974570806**
www.facebook.com/IWtrees
douglas@mcgeoch.com



**MILLENNIUM
WINDOWS LTD**

UPVC Doors & Windows, Conservatories and Fascias
& Gutter Installations on the Isle of Wight.

CALL US ON **01983 810 888**
millenniumwindowsiow.co.uk facebook.com/millwindows



**FRONTROW
GROUNDWORKS**
ISLANDWIDE

Fully insured
28 yrs experience
Reliable!

Fencing

Removed - Repaired - Replaced
 All types of fencing undertaken
 Quality materials used • FREE quotes



Call Andy 07817 979501
 or 01983 863348
frgworks@icloud.com

PLUS Landscaping • Turfing • Driveways • Pathways • Decking
 • Drainage • Tree & Hedge maintenance & removals
 • Footings • Garden walls • Guttering



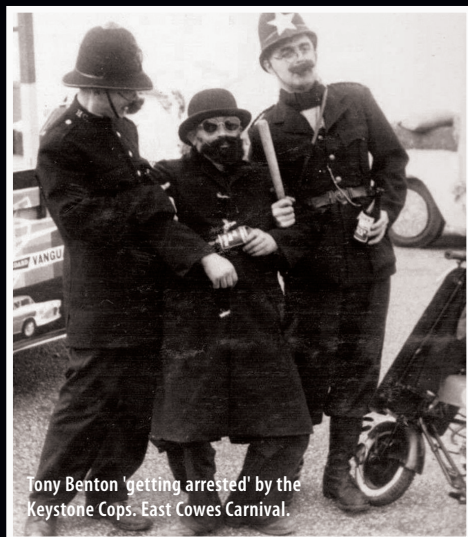
**SW
Vehicle Body Repair**

If you've damaged your vehicle,
or someone else has, did you
know you **DON'T** have to use
the repairer your insurance
company suggests?

You could save money and they
can help towards the excess too.




SW Vehicle Body Repair - Giving you choice
Call 866 413 today



Tony Benton 'getting arrested' by the Keystone Cops. East Cowes Carnival.



Sandown in the late 1950s. Image courtesy of Molly Anderson. Instagram: @molly_the_historian (also right)



Crowning of the May Queen at St Helens Carnival, 1930s-1940s.



Newport Carnival 1930

CARNIVAL

ISLAND



Cowes Carnival Queens.

In the summer of 1887, Queen Victoria watched on as the first Isle of Wight carnival took to the streets of Ryde in aid of her Golden Jubilee.

The streets were lined with British flags and local revellers, as bands played and a tradition spanning more than 130 years began.

Today, carnivals are held in towns and villages across the Isle of Wight. Schools, families and community groups don their cleverly created costumes and fill the streets with cheer, often raising money for good causes and community events.

Only Covid has ever stopped the Island's carnival season in its tracks. So on these pages, we celebrate the many years of merriment, with a look back at some moments in Isle of Wight carnival history, while we look forward to its return.

We'd love to hear your carnival memories. Get in touch at hello@iwbeacon.com if you'd like to share them with us. 📧



Whitwell. Early 1900s.



Archie Warren on his steed.



Shanklin 1972. Photo courtesy of Mrs Doris Russell



David Biles and Robert Cooper as Steptoe and Son in the early 1960s. Photo courtesy of Sam Biles.



Shanklin 1972. Photo courtesy of Mrs Doris Russell



Newport Carnival. Around 1962.



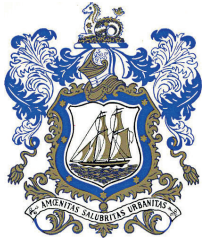
Ryde Carnival. Around 1992



1988 carnival queen, Becky Harvey and 1939 carnival queen Joan Bartrum



Newport Carnival in the 1950s



Ryde Town Council

Town Hall Chambers, 10 Lind Street, Ryde, PO33 2NQ Tel: 01983 811105
Email: clerk@rydetowncouncil.gov.uk www.rydetowncouncil.gov.uk



Valued members of staff gained through the Kickstart Scheme

We are delighted to have gained valued employees through the Kickstart Scheme. The Kickstart Scheme aims to create new six-month job placements for young people aged 16-24 who are currently on Universal Credit and at risk of long-term unemployment. The Town Council have signed up for five placements and helped other Ryde employers to enrol on the scheme, offering 43 placements, with further placements under review. We are committed to creating opportunities for the young people of the town, as well as employers developing their businesses through the skills that the young person can bring.



Huge success for Ryde Fiver Fest

Ryde Fiver Fest hit the town again this year, joining over 100 towns across the UK in the national Totally Locally Fiver Fest Campaign, which



ran from 12th to 26th June. This created an incredible buzz round the town and more importantly helped boost the local economy. The past year has shown us all how important local shops and independent businesses are to our communities and Fiver Fest was a great way to support them. The message is simple, spend little and often at independent businesses to make a real difference to your high street. If every adult in Ryde spent just £5 per week in their local independent shops, then it would generate around £2.7 million going directly back into the local economy, not to mention the amazing gems you might just find!

Paddleboard, kayak and deckchair hire on Ryde seafront this summer

We are delighted to announce that Ryde Town Council are set to launch paddleboard, kayak and deckchair hire on Ryde seafront this summer.

With 250+ deckchairs and sunloungers, windbreaks, parasols as well as paddleboards and kayaks available to hire, the scene is set for fun on Ryde's magnificent beach this summer. The approved planning application means that a steel storage container clad in wooden boarding will be sited next to the current Ryde Harbour Office as a base for the beachfront operations.

This is a great step forward for Ryde and is a crucial stage in making Ryde the Island's go-to destination this summer – why not join us there and join in the fun.



Be safe in the water this summer

The Town Council will be making sure that the town's beaches are clean and safe this summer. Please look out for our beach lifeguards over the summer holidays who are funded by the Town Council and provided by the Waterside Pool, Ryde's very own community swimming pool.

Please swim within the lifeguarded areas and ensure all children know where the lifeguard station is. Please explain to your children that they can report to the lifeguard station if they need assistance.

If your child needs to learn to swim contact the pool on 563656 for details of lessons.

Upcoming Council Meetings

Date	Meeting	Time	Venue
Monday 5th July	Full Council	7pm	Please see the agenda on our website three working days before the meeting for venue details
Tuesday 6th July	Planning Committee	6:30pm	Please see the agenda on our website three working days before the meeting for venue details
Tuesday 13th July	Finance Committee	7pm	Please see the agenda on our website three working days before the meeting for venue details
Thursday 27th July	Planning Committee	6:30pm	Please see the agenda on our website three working days before the meeting for venue details



Shanklin Town Council

Town Clerk RFO: Ms S. Janeway LL.B (Hons) CILCA MSLCC, 65 Landguard Road Shanklin Isle of Wight PO37 7JX

☎ 01983 865101 ✉ shanklintowncouncil@hotmail.com 🌐 www.shanklintowncouncil.co.uk



Town Mayor's address

*Councillor Chris Quirk
Shanklin Town Mayor*

Following the recent local Government elections and the Town Council's

ATCM, I have been elected as the Mayor of Shanklin, taking over from Cllr Steve Knight following completion of his second term as Town Mayor. Just like all other aspects of life, the work of the Town Council has been dramatically impacted by Covid-19 the last two years, and I would like to take this opportunity to publicly thank Steve Knight for the way in which he carried out the role of Mayor over that difficult period.

As well as a new Mayor, the town also has a new Deputy Mayor, and at the Shanklin Town Council ATCM Sue Godden

was elected to this role. The town also has new Councillors, Patrick Barry in Shanklin North, Wendy Hilton-How, Robin Lansdell in Shanklin Central, and Stephen Parkes and Mike Hailston in Shanklin South. This election also saw the return of former Mayor and former Isle of Wight Council Chairman David Williams representing Shanklin Central.

High on the agenda of the Town Council as we come out of Covid-19 restrictions will be:

- Public toilet provision particularly on the seafront
- Upgrading public realm in terms of decorative lights and flower planting
- Renewal of the Jubilee Clock Tower and flagpole on the Esplanade

- Bin emptying and beach cleaning
- Addressing long term issues with Big Mead Pond
- Planning for the Queen's Platinum Jubilee celebrations
- Maintaining our Gold Quality beach award status

In the longer term we need to consider developing a Town Plan, desirable in its own right to shape the future regeneration of Shanklin, but important to help maintain the character of the town in the light of changes to the planning laws covering Permitted Development.

**Best Regards Chris.
Shanklin Town Mayor (2021)**



Ventnor Town Council

1 Salisbury Gardens, Dudley Road, Ventnor PO38 1EJ.

☎ 01983 857840 ✉ townclerk@ventnortowncouncil.org.uk 🌐 www.ventnortowncouncil.org.uk

NEW TOWN COUNCIL

May's Local Elections gave us four new Councillors to join five re-elected from the 2017/21 Council and we co-opted two more residents at our June meeting to give us a full complement of 11. The Annual Town Council Meeting unanimously appointed Stephen Cockett as our new Mayor with Steph Toogood as Deputy Mayor.

FUNDED SUPPORT

We've been able to access a total of £21,500 from government funding secured by the Isle of Wight Council to support local residents facing even greater than usual challenges as a consequence of Covid. In addition to £7,500 to support vulnerable residents we have also been able to provide £5,000 in food vouchers for local people in food poverty through our Food Bank and BabyBox. There is now another £9,000 available from the Holiday Activities and Food Fund to provide both those things for some of our children eligible for free school meals during the summer holidays.

ANNUAL TOWN MEETING

At our first ever virtual annual Town Meeting on 24 May we heard of the over 1,100 collections of shopping and medications for vulnerable residents (Ventnor Community Volunteers), the range of repairs, improvements and decorations provided by volunteers (Ventnor Enhancement Fund), flowers flourishing in unexpected places (the Flower Fairy), new facilities (Ventnor Community Shed), support services (the Anxiety Café, Ventnor Community Foodbank and BabyBox) and activities for young people (our Youth Club).

VENTNOR HAVEN

The Haven collects large quantities of seaweed that then rots and produces the vile smelling hydrogen sulphide gas. This extremely serious threat to the town has been prevented by the Isle of Wight Council funding Cheetah Marine to pump it out at a cost of around £70k a year. That contract comes to an end in March next year. Although there is a European funded feasibility study of potential commercial uses of the Island's seaweeds, there is currently no

agreement about what will happen in time for next year's season. The Town Council, Cheetah Marine International Ltd and Ventnor Haven Fisheries have now formed the Ventnor Haven Group to act on the issue.

GOODBYES

We've said goodbye to two of our previous Town Mayors, not just from the Town Council but from the Island. Jason Mack (Mayor 2015/16, 2016/17, 2017/18 and 2018/19) and his family have left for a new life on the mainland. Stewart Blackmore and his wife are ready to take off for Thailand as soon as the sale of his house is finalised. Two remarkable men whose work has been critical in ensuring the town still has the assets and services the Isle of Wight Council had to stop providing.

MORE INFORMATION

The Town Council's website, with contact details for Town Councillors and staff, is at www.ventnortowncouncil.org.uk; our Twitter account is: @ventnorclerk.



News from Sandown South

by Cllr Ian Ward

COMMUNITY BUS GETS QUEENS' AWARD FOR VOLUNTARY SERVICE (QAVS): We recently received the amazing news that our Community Bus service volunteers have been awarded the QAVS. This is in recognition of the fantastic service our volunteer drivers provide to the Sandown, Lake, Shanklin and Cowes areas. I helped to start the service which has been running for nearly 10 years now and I'm still the managing director, but it is all run daily by Alan Stott our Co-ordinator and is funded via our passengers' vital donations.

Our Lord Lieutenant, Susie Sheldon will present us with the actual award later this year. We are always on the lookout for new volunteers so if you fancy helping our local community while gaining a valuable skill perhaps you would consider training as a bus driver? if so please contact me for details.

ISLAND LINE UPDATE - FROM SENIOR REGIONAL DEVELOPMENT MANAGER: The arrival of a second new train onto the Island marked an important step towards the completion of the Island Line upgrade later this summer. With two trains now on the island, preparations are making good progress. A new train conducted an important 'gauging run' through the

tunnel at Monkton Mead to check the engineering work that has taken place there. The train was towed by a road rail vehicle as the power to the line was switched off whilst engineers carry out inspections and tests.

Milestones such as these bring us closer to the completion of this exceptionally complex project however, with so many variables, it is still too early to give a definitive date for the railway to reopen. Everyone involved in the project continues to work tirelessly to bring the trains into service as soon as possible.

We are still looking at a date in late summer and once we have more certainty, we will let you know.

SANDOWN LIBRARY - NEW COMPUTERS FOR RESIDENTS TO USE: A resident contacted me about the outdated computers in Sandown Library telling me how slow they were. I contacted our Computer Dept who explained that they had just changed the computers during the pandemic lockdown. So, our library now has UpToDate computers for the use of our residents.

☎ 403193/ 07772559093
✉ ian.ward@iow.gov.uk



Threatened phonebox on Undercliff Drive, Ventnor
(Photo: © Chris Downer / Creative Commons)

Fifteen Island Payphones Proposed for Removal

By John Warburton

British Telecom is proposing to take away fifteen payphones on the Island, four of which appear to be unused.

But another two of them, outside Esplanade Pavilion in Ryde, and another in the town's St. Thomas Square have an average of 17 calls being made from them every month.

Telecoms regulator Ofcom specifies the procedure for having a payphone closed, if British Telecom — obliged to provide a universal service — believes the location no longer has a need for a public telephone.

That's despite the communication giant saying, as long as eight years ago, that six out of ten phone boxes at that time were not taking in enough money to cover their costs.

A full consultation must take place, Ofcom says, if BT plans to take away a payphone that has no alternative device within 400 metres' walking distance.

In considering BT's proposal, IW Council needs to weigh-up factors such as the quantity of rented housing nearby, or a possible need for emergency calls e.g. if the payphone is next to a harbour.

A public consultation took place in June.

The phones which BT proposes to remove

- Opposite Royal Needles Hotel, Alum Bay, Totland Bay
- Near the RNLI on The Quay, Yarmouth
- Outside 66 Junction of Lower Church Rd and Solent View Road, Cowes
- Junction of Woodbale Road and Shore Road near "W Hotel", Cowes
- Outside No. 130 Shooters Hill junction with High Street, Cowes
- Outside No. 1, Coronation Avenue junction with Newport Road
- Outside No 93-94 South Street junction with St James Street, Newport
- Junction Seven Sisters Road with Undercliff Drive, Ventnor
- Outside Brookside, Bonchurch Village Road, Ventnor
- Opposite 83 High Street, Shanklin
- Outside Whitecliff Lodge, Hillway Road, Bembridge
- Former Post Office, Madeira Road, Seaview
- Entrance to Puck Pool Park, Ryde
- Outside Esplanade Pavilion, Ryde
- Next to Crown Hotel, St. Thomas Square, Ryde

Vehicle Consulting

Looking for a new car or van?

There is another way...

We can source and deliver any make or model of new vehicle to your door, with multiple finance options.



Cars, Vans or Electric
Personal, Business or Fleet

Vehicle Consulting

THE ISLAND'S LEASING AND FINANCE SPECIALIST

For the latest offers and more details,
visit vehicleconsultingsolent.com
or call 01983 632 562.

Godshill Play Park Plans Approved

Plans to bring an inclusive children's play park to Godshill have moved one step closer, following approval from the IW Planning Authority.

Together with Godshill Parish Council, local residents and families have been raising funds to build a wheelchair accessible swing and roundabout, climbing frames, obstacle courses, zip line, sensory equipment and toddler area at the site on Central Mead, behind The Old Smithy and The Taverners.

Campaign organiser, Nikki Collinson-Phenix said the project has been six years in the making.

"We want the children who live in Godshill, and the many children who visit the village every year, to have a place to play, burn off energy, enjoy healthy fun outdoors and make memories and friendships that may last a lifetime.

We want this park to be accessible to those with disabilities, ones you can see and ones you cannot."

Organisers are working with the National

Lottery to raise the funds for what has been estimated as a quarter of a million pound project. With £10,000 left to raise, organisers are calling for local people and businesses to help.

"Perhaps you can host a fundraising event, or as a business you could sponsor a piece of equipment."

"The planning side of this was of course one of our biggest hurdles to achieve and it's been a hard journey, but we did it!

"Of course there are certain conditions we need to meet but to have approval is just the best news ever! Now we need to knuckle down and get that funding secured and to finally hit our own fundraising target!"

You can donate online at:
tinyurl.com/godshillplaypark



News from Sandown North

by Cllr Debbie Andre

This has been a very busy month so far following my being appointed as the Cabinet Member for Children's Services, Education and Skills. Thank you to everyone for your kind wishes upon my appointment. I would like to reassure you, however, that I will still be available to you, as I always have been, as your ward member for Sandown North. We have a great new team at the helm in County Hall and we are already working well together to make the much needed changes under our experienced, determined leader Lora Peacey-Wilcox.

My first Councillor surgery since lockdown, in June, held jointly with three members of our local police team, was well received and some good conversations were had. I'd like to personally thank PCSO Fiona Hyslop, PC Rob Quick and PC Ash Webb for changing their shifts to be available and for engaging so positively with the residents who came along. This month's surgery will be on Saturday 3rd July with another opportunity to meet our local policing team. Do come along with your questions.

Island Roads will be publishing their forward programme of works at the end of this month, July, and this should give an indication of when works are to commence in Sandown, including measures to alleviate the parking issues in Meadow Way. I know that a lot of disruption has been caused by the laying of the fibre network by sub-contractors of Wight Fibre, especially along Yaverland Road. Please continue to raise these concerns with me.

By now, the buoys should be out in the Bay. Sea swimming is becoming more popular and we want to keep our swimmers safe. I

have spoken to local jet ski owners who have assured me that they act responsibly. It would seem that we have been attracting jet skiers from across the water who have been showing little regard for the safety of others. The number to report an incident if there is immediate danger or a marine pollution spillage in our waters in the Bay is 02392 723694 or you can go online: www.royalnavy.mod.uk/qhm/portsmouth/safety-and-regulations/report-an-incident

Whilst it's disappointing that the Island Line service isn't currently running and has been delayed for a second time, SW Trains have doubled the schedule for the replacement bus to match the summer train timetable. I will give further updates as I get them.

At the time of writing, it's just been announced that we won't be free of all restrictions just yet. There will still be many people who are anxious about venturing out from their homes. Please let's continue to look out for each other. If you know of someone who needs a little extra help, please get in touch with me directly or go to [keeptheislandsafe.org](https://www.keeptheislandsafe.org) or call 823600.

Councillor Heather Humby is looking forward to being able to hold her weekly councillor surgery at Sandown Library as soon as restrictions are fully lifted, but she can still be contacted on 402024 or heatherhumby@sandowntowncouncil.gov.uk

Please get in touch with me by any of the above means with your concerns.

☎ 07948 757977

📧 debbieandre4sandown@gmail.com

Arreton Gardens Open for Charity

Gardens will open their gates in Arreton this month, to raise funds for WightDASH/WOW and the Isle of Wight Scouts.

Six to eight gardens, including Arreton Manor and Haseley Manor, will be open on Sunday, July 18th from noon until 4.30pm.

Visitors are encouraged to go along and enjoy the beautiful gardens, perhaps visiting Arreton Barns and the Shipwreck Museum at the same time. There's plenty to keep you busy.

There will be a plant stall and cream teas at Haseley Manor.

Entry will be £5, which includes entry to all gardens. You

can buy tickets at the Post Office from 16th-17th July, or from the first garden you visit. Children are free.

Parking will be free at Haseley, Arreton Barns and the community car park to right of the White Lion Pub. If you're arriving by bus, the number 8 goes right through the village.

Charity, WightDASH supports women experiencing difficult times, while the WOW centre in Newport runs courses to help and support women.

Event is Covid permitting.
Call Vivian Roberts 07768 091370 for more information.





News from Ryde Monktonmead

by Cllr Karen Lucioni

LET'S TALK, IT'S RYDE'S TIME TO SHINE:

This is a great opportunity for young people in Ryde to have their say about what it's like to be a young person in the town. What is good and what makes you feel unhappy. The online discussion is aimed at giving everyone an opportunity to have their say about safety in the town. The conversation will look to include all communities and is hoping to talk about how to encourage all ages and backgrounds to work together to really boost the vibrancy and community spirit of the town.

The Let's Talk, It's Ryde's Time to Shine World Café will take place on Thursday 1st July. The online discussion is aimed at giving everyone in Ryde – young people, residents, workers, businesses – an opportunity to have their say about the town, crime and safety.

The World Café is the first event in a programme of Let's Talk, It's Ryde's Time to Shine events which will take place this year. The outcome of this online conversation will set priorities for the next phase which will be looking to invest money into small



community-based ideas.

"This is such an important event for our community, we want every Ryde resident to come along and have their say on safety in our town. Working together we can build a better future." I am one for many dedicated partners who are committed in this process and will work alongside residents to tackle issues identified at the event.

If you would like to take part, you can register at: www.eventbrite.com/e/rydes-time-to-shine-tickets-153025321857

If you can not make it however would like to have your say, please contact me direct.

☎ 07506 930109

✉ karen.iow@icloud.com

Dinosaur Footprint Discovered

By Oliver Dyer

A 125 million-year-old dinosaur footprint has been discovered on an Isle of Wight beach.

Dinosaur Isle said the footprint was uncovered on the foreshore at Yaverland and measures around 50cm.

Posting on Facebook, the Sandown museum said the image shows the dinosaur was travelling in a south westerly direction.

It's estimated it happened around 125 million years ago.

It's been 20 years since the museum opened, and to mark the occasion a new guidebook to the Isle of Wight's fossils has been published.

Dinosaur Isle's Dr Martin Munt said:

"This book has only been possible because of 200 years of fossil collectors, museum staff and volunteers supporting the museum and believing



that our world class fossil heritage should stay here where it belongs on the Island. The book has been written for the general reader, and we provide a glossary of the technical terms to help with understanding."

Treasurer Sought for Royal British Legion

By Iona Stewart-Richardson

The Royal British Legion Branch Committee in Shanklin needs a new treasurer.

The previous treasurer resigned which means the committee has now been given 'county supported branch status'.

In order to return to 'self-governing' status, a new treasurer needs to be appointed as soon as possible.

Duties will include:

- Money and accounting
- Reporting income and expenditure
- Submitting accounts at the annual general meeting

Training courses are available for anyone who takes up the role — which is open to everyone.

The non-elected role gives you a vote on the branch



committee.

The Royal British Legion, formed in 1921 to support the needs of the ex-servicemen in the community.

The branch runs the military and ceremonial side and the club runs the social and entertainment side of things.

Acting Chairman, Tom Bodman said: "We normally have one committee meeting a month on a Tuesday at the Royal British Legion Shanklin, at 7pm and the annual general meeting is in November, at the same time and same place. Anyone who is interested in the volunteering role can contact me directly".

If you are interested or know someone who might be, call Tom on 01983 863817.

Funeral Plans from William Hall Independent Funeral Directors

Planning ahead for peace of mind

A funeral plan provides peace of mind for you and those you care about. You make the arrangements in advance, specify your wishes and take care of the costs. We recommend funeral plans from Golden Charter, the UK's largest independent plan provider. With a Golden Charter plan you'll benefit from:

- Paying at today's prices for a service you may not require for many years
- A guarantee of nothing more to pay for our services
- A choice of a range of plans – with the option to personalise your own
- The reassurance that your wishes will be carried out, sparing your loved ones uncertainty and distress

Taking out a funeral plan is one of the most thoughtful decisions you could make.

To find out more about Golden Charter funeral plans from William Hall, please return the coupon below, phone us, or call in.

Mr/Mrs/Ms: _____ Initial: _____ Surname: _____

Address: _____

Tel no: _____

Send to: William Hall Independent Funeral Directors, Sunnybrow Winford Road, Newchurch, Isle of Wight PO36 0JX

Tel. 01983 868688



Golden Charter
Funeral Plans



£150 of M&S Vouchers

Awarded to every new Golden Charter Funeral Plan taken out between 1st July to the 31st July 2021 with William Hall Independent Funeral Directors, Sunnybrow, Winford Road, Newchurch PO36 0JX. www.williamhallfuneraldirectors.com

50,000 Jabs and Counting

By John Warburton

Staff at the NHS Vaccination Hub at the Riverside Centre in Newport marked their 50,000th anti-coronavirus inoculation on Saturday June 19.

Amid balloons and congratulations, patient Gemma Duer, 25, received a shot of the BioNTech/Pfizer treatment.

David Noyes, chief operating officer (Southampton and Hampshire) of the Solent NHS Trust, said:

"Super proud of the whole team at our IoW vacc centre at Riverside who today achieved the brilliant milestone of 50,000 jabs given.

"Great achievement by all involved, led by the super Sarah Stringer with support from across the whole community."

The team has been supported by volunteers from Freshwater Fire Station and



Photo: © Solent NHS

the Friends of Freshwater Fire Station group.

Members congratulated Ms. Stringer (senior manager) along with matron Janice Salter, clinical shift lead Michelle Martin and Emmeline Payne, who is the vaccination centre manager.

They also honoured Watch Manager Kev Garrett, who they said had been part of the team from the beginning.

The vaccination centre's work must continue, as all adults 18 and over are invited to receive anti-coronavirus jabs.

Coach Tours from Hovertravel and Seaview Services

By Jamie White

Hovertravel is teaming up with Seaview Services to offer guided coach tours of the Isle of Wight.

Pat Sowerbutts, Commercial Development Executive at Hovertravel, said:

"We know from our contacts in the coach industry and our own research that many customers want to be able to experience the thrill and excitement of our hovercraft combined with an easy way to explore and discover the Isle of Wight.

"We needed a partner who could provide the coach and guided tour element of such a trip and we are delighted to announce today that we are going to be working with Seaview Services."

Seaview Services is approaching 103 years of organising and delivering coach-based tours and excursions on the Isle of Wight, having been started in 1918 by Richard Newall.

Today, the business can organise all aspects of your trip to the Island, including booking conference suites, restaurants and hotels.

The first guided tour will be a circular coastal route, taking in Sandown, Ventnor, both Freshwater and Alum Bays and Yarmouth before returning to Ryde.



Pat Sowerbutts, Commercial Development Executive at Hovertravel and Phil Robinson, Chairman from Seaview Services

WIN
 £100 OR £50
 OF OPEN-STUDIOS ARTWORK
See yearbook on website for more information



ISLE OF WIGHT ARTS

OPEN STUDIOS

2021

FRIDAY 16 - MONDAY 26 JULY


LOOK FOR THE RED BUNTING


COME AND MEET THE ARTISTS | FREE ADMISSION



RED FUNNEL
THE ISLE OF WIGHT TRUST

FIND OUT MORE AT

ISLEOFWIGHTARTS.COM

pepper
www.peppercreative.co.uk

EM CARS

Ventnor Industrial Estate, Old Station Road, Ventnor

MOT TESTS

SERVICING

REPAIRS

WELDING

EXHAUSTS

DIAGNOSTICS

BRAKE CHECKS

FREE BULB CHECKS

FREE TYRE CHECKS

AIR CONDITIONING

TYRES

PERFORMANCE ENHANCEMENTS

01983 854927

10% OFF

Any labour charge on your next visit



Pre-booking is essential & discount must be requested at time of booking. Voucher to be produced with payment

Valid until 31st August 2021

THE RYDE HOUSE GROUP SUPPORT ADULTS AND YOUNG-PEOPLE WITH COMPLEX NEEDS

RECRUITING
NOW!



If you are passionate about people, why not consider joining our team here at Ryde House Group?

We have a range of positions available and no previous experience is required.

We also offer a fun & friendly place to work, 5.6 weeks paid holiday, staff gifts and company discounts!

Life changing support starts with you.



VISIT
RYDEHOUSE.COM
TO START YOUR RHG
CAREER

Would you like an honest,
reliable and **AFFORDABLE**
police checked*
cleaner to clean your home?

Typically
£13.50 per hour inc.

Then contact us at



TIME FOR YOU™
DOMESTIC CLEANING

As Featured on BBC 2's Working Lunch, Ch4's 'House Swap' & preferred cleaning supplier to CH5's Cowboy Builders!

Telephone:
01983 623 123

iow@timeforyou.co.uk
www.timeforyou.co.uk/iow

*police checked cleaner upon request



Pre-paid funeral plans

*If it means everything
to have your favourite song
played, white lilies and
a release of doves,
have them.
It's your funeral.*

Our pre-paid, inflation-proof funeral plans guarantee the way you want to be remembered and protect your loved ones from unnecessary burden and costs.

Drop in to see us today, visit us at funeralcare.co.uk or call us on 0800 243 380

**£100
OFF**

our pre-paid funeral plans*

Enter BEA10W21 at: funeralcare.co.uk/funeralplans or take this coupon along to your local funeralcare home.

*Terms & Conditions: The voucher may only be redeemed against eligible Southern Co-op funeral plans costing £3,000 or more and will be deducted off the cost at time of sale. The voucher has no cash value and cannot be used in conjunction with any other discount, offer or promotion. For full terms and conditions visit: funeralcare.co.uk/funeralplanterms, request a copy from any Southern Co-op funeralcare home or by calling 0800 008 6878. This voucher is valid until 31/12/2021.

Funeral homes in:

- East Cowes
- Freshwater
- Lake
- Newport
- Ryde
- Shanklin

The **co-operative** funeralcare



LEGAL & FINANCIAL

The Importance of Making a Will

Many people often assume their possessions will simply pass automatically to their spouse or children and consequently don't make any plans for the future after they are gone. Often people believe their assets are too small to require a formal arrangement or legal guidance.

If you die without having made a Will, the intestacy rules apply and may not reflect your wishes. Therefore, the only certain way to ensure that your wishes are put into effect is by making a Will.

Under the intestacy rules your spouse will receive a statutory legacy of up to £270,000 and your personal possessions. If your estate is worth more than £270,000 the balance is split with your children and so your whole estate will not necessarily all pass to your spouse.

Although it is increasingly common for partners to live together without marrying or entering into a Civil Partnership, at present the intestacy rules do not recognise these arrangements.

A Will is a legal document that allows you to pass on your possessions to benefit others after your death, giving you control over what happens to your money, possessions and property after you die.

Therefore, if you live with your partner and die without having made a Will, your partner will not automatically inherit any of your estate and would have to make a claim on your estate. This could mean them having to fight for their home at a time when they have just lost their life partner.

Family arrangements are also becoming more complex. If you have children from a previous relationship you can use a Will to protect assets for those children. For example, a Will can give a second spouse the right to occupy the family home, while protecting the capital for children of an earlier relationship.

A Will can also be used to protect assets against future care fees. If your estate passes absolutely to your spouse or partner on your death and your spouse

or partner subsequently need care then your estate could be used to pay those fees. A trust can protect your capital for your children or other beneficiaries whilst allowing your spouse to remain in the family home and benefit from the income from any other capital.

What if you wish to leave gifts to charities or other organisations? Again, under the intestacy rules, this will not happen and so the only way to make sure your chosen beneficiaries do benefit is to make a Will.

Everyone's situation is unique, and the best way to ensure your wishes are in place is to seek professional legal advice. A solicitor is highly regulated and insured. They will make sure that they understand your situation to ensure that you are given advice appropriate to that.



April Newton is an Associate Solicitor at Glanvilles Damant specialising in Wills, Powers of Attorney, Trusts and elderly client matters. Please contact her on april.newton@gdlegalservices.co.uk or 01983 527878 for a free initial consultation.





wellbeings-feelbetter.com

The Island's exciting new therapy centre

Languard Manor, Shanklin PO37 7JB

Total relaxation and wellbeing

Abdominal, fertility and digestive treatments

Get out of pain, Fascial Fixit treatments

Postural alignment and increased mobility



**Ix Chel
Maya Massage**

Angie Ix Chel

Reflexology
Arvigo Maya Massage therapy
Aromatherapy massage



Keith Graham

Cert. Advanced Rolfer
Fascial Fitness trainer
OMT Advanced spinal
manipulation
Senior Instructor TCUGB

please call first to make an appointment

Angie: 07399 451 644 • Keith: 07799 333 804

**Saving water
saves money,
cuts carbon
and protects the
environment.**

**It all makes
a difference.**

For more simple tips on
how to save water, visit:
southernwater.co.uk/save

**WATER
for LIFE®**

from
**Southern
Water.**

BARNEY'S TYRES

Tyres at great prices!

**BUDGET, MEDIUM & BRANDED
RANGE TYRES FOR CARS,
VANS, 4X4'S & TRAILERS
ALL AVAILABLE AT LOW PRICES!**



- PUNCTURES & WHEEL BALANCING
- OPEN 8-5.30 MON-FRI & 8-1 SAT
- NO NEED TO BOOK, JUST TURN UP!
- ACCEPT CASH & CARD PAYMENTS
- UNIT 4, ALBANY CENTRE, FOREST ROAD, NEWPORT, ISLE OF WIGHT PO30 5NB



**WE CAN FIT YOUR TYRES
AT WORK OR HOME!**



Mobile fitting service - call & book a convenient time for you

T: 01983 529061

M: 07788 817511



Affordable Direct Cremations

Located on the Isle of Wight for the Isle of Wight

Brought to you from an Independent Funeral Directors with nearly 200 years of experience looking after families on the Island. We are the only funeral directors based on the Isle of Wight dedicated to this style of service at isleofwightdirectcremation.co.uk or call us on 01983 632598

How does it work?

Direct cremation is an affordable alternative to a traditional funeral. It separates the cremation from the funeral ceremony. The cremation takes place without any service at the crematorium, and without mourners or a minister present.

What's the difference between a direct cremation and a traditional funeral?

A direct cremation separates the celebration of life from the cremation. The cremation takes place without anyone present allowing you and your family the freedom to celebrate your loved one at a time, place and venue of your choice. We carry out this service in the same dignified, professional way as we would do for any funeral that we undertake. The simple nature of a direct cremation is reflected in the price.

How much does a direct cremation cost?

We have two options to choose from:-

- Our 'Island Way' is £1,695.00, this is for a direct cremation at the Isle of Wight Crematorium
- Our 'Wessex Way' is £1,495.00, this is for a direct cremation at a mainland crematorium.

We offer this option for families that would like to take advantage of the savings that mainland crematoriums offer. We then pass this saving onto families. Both these options are all inclusive with no hidden additional costs; unlike mainland providers who charge additionally for ferry fares.

Can I get help with the cremation costs?

Yes if you are in receipt of benefits you may be entitled to a payment of up to £1,000 from the Department of Work & Pensions, so we advise contacting them to enquire.

Why Choose it?

- Less expensive than a traditional funeral
- It allows you the freedom & flexibility to focus on celebrating a life well lived.
- Freed up from the cremation it opens up the options for venues and times, even weekends, to hold your celebration.
- A simple and easy to arrange process

What's the difference between Isle of Wight Direct Cremation and a mainland provider?

- To start with we are based here on the Island. We can promptly take your loved one into our care without the need for travelling over by ferry involving lengthy and distressing delays.
- We usually meet you face to face either at our island offices or in the comfort of your own home, but due to current restrictions of social distancing we can make all arrangements on the telephone
- Mainland providers courier the ashes back to you whereas we provide a more personal service by returning them to you at home, or you can come into either our Bembridge or East Cowes office.
- We are locals too and understand the local community.

Who is Isle of Wight Direct Cremation?

We are independent family funeral directors based here on the Isle of Wight. We are the Isle of Wight's longest running established undertakers.

We have offices based in Bembridge & East Cowes so you can come in, or call us on **632598** or even visit us on line at www.isleofwightdirectcremation.co.uk. With over 190 years of experience we are on hand to make a difficult time easier.

Do you offer pre paid direct cremation funeral plans?

We get asked this question a lot and the answer is, Yes! Often people like to get their affairs in order to avoid expense being left to their loved ones at a distressing time. Our plan holders often tell us that this can be a big weight off their mind.

A pre paid funeral plan offers total security. There are flexible payment options too. We use Golden Charter pre paid funeral plans as they allow you to pay at today's prices and avoid rising costs.

Who is Golden Charter?

Golden Charter is the UK's market leader for providing pre paid funeral plans to Independent Funeral Directors since 1989. Your funds are safe and are placed into The Golden Charter Trust. The Trust will pay out for every plan that pays into it.

Golden Charter
Funeral Plans



located on the Isle of Wight for the Isle of Wight

Affordable Direct Cremation - All inclusive, no hidden costs
Separate the Cremation from the Celebration

www.isleofwightdirectcremation.co.uk // info@isleofwightdirectcremation.co.uk

Direct Cremations
starting from **£1,495.00**

Pre paid funeral
plans from **£1,750.00**

Call us on:
01983 632598



SPEND MORE TIME OUTDOORS!

OUR SIMPLICITY SERIES FEATURES A RANGE OF CANOPIES, CARPORTS AND VERANDAS HAVING BEEN DESIGNED SPECIFICALLY TO ADD **STYLE & PRACTICALITY** FOR ALL OUR CUSTOMERS



- ✓ **FULL 10 YEAR GUARANTEE**
- ✓ **ALUMINIUM CONSTRUCTION**
- ✓ **RANGE OF COLOUR OPTIONS**
- ✓ **IMPACT RESISTANCE**

**WHITE
WINDOWS**

CALL 01983 523552 FOR A FREE ESTIMATE, OR VISIT
WWW.WHITEWINDOWS.CO.UK

BONCHURCH GARAGE

TEL: 854145

FAX: 854145

MOT's, Servicing and Repairs

Air conditioning recharge and servicing • Modern diagnostics undertaken

TEL 01983 854145 EMAIL bonchurchgarage@aol.com

Bonchurch Garage, Bonchurch Village Road,
Bonchurch, Ventnor PO38 1RG

VISA

VISA

STUDIOPHASE

Freeview



freesat

sky csi

The Isle of Wight's local TV experts
Call 404406 studiophase.com

Why choose us?

- CAI approved • Friendly, reliable engineers
- We have over 30 years of local knowledge



Island Repointing

Natural Stone & Brick

Masonry Waterproofing & Brick Replacement

Damp Proof Course Installation & Cavity Clearance

Vacuum Grinding

Islandwide Coverage



Tel: 01983 531461 or 07715 397896

for those jobs outdoors



MAKITA • JANSEN • KUBOTA • NILFISK • HAYTER • TORO • CUB CADET AND MANY MORE



Expert advice
No better price



STUBBINGS BROS
meeting your machinery needs

call us on

551443

Chale Green, IW • jobsoutdoors.co.uk

THE FLORAL QUEEN

By Flo Whitaker

Roses have always beguiled us. They appear in Greek and Roman mythology, ancient Chinese writings, as well as Persian and Indian literature. Queen Cleopatra was bonkers about roses and the Empress Josephine was reckoned to have a collection of over 250 different types. Marriages and alliances have been celebrated with a showering of rose petals since the earliest times. A rosebud posy was considered a charming gift for an expectant mother, while ancient Egyptians solemnly garlanded their dead with roses. This most poetic, captivating flower has accompanied us through the centuries — from cradle to grave.

Roses are indigenous to most parts of the globe. They're a large family of approximately 300 species, (naturally occurring types) and thousands of man-made varieties. Many modern roses can trace their lineage back to historic Asian and Persian forms. They do best in a sunny location, sheltered from winds, but are tough plants that will always try to please — some types tolerate light shade or a north-facing aspect. Most are very hardy; down to -10°C, considerably more for species forms. There are groundcover types, shrubs, ramblers, climbers and small-scale

patio roses that are ideal for pots. Species roses bear pollen-rich, bee-friendly flowers and highly decorative hips in autumn. They are usually thorny characters, making them the perfect choice for a low-maintenance security hedge. Take time to consider the right rose for your location. Don't be swayed just by colour

and perfume! Research before you buy; noting height, habit and flowering time — some varieties will repeat-flower over a long season.

Before planting any rose, ensure its roots are thoroughly hydrated. Drench a potted specimen until the root ball is sodden, (it's easier to remove a pot if the soil is wringing wet). A bare-rooted plant should be soaked in a bucket of water for an hour and any damaged roots removed with sharp secateurs. Dig a hole 50% deeper and wider than the container/root ball. Put a spadeful of well-rotted manure and a spadeful of leaf mould



Species roses bear pollen-rich, bee-friendly flowers

into the hole and mix together with some of the excavated soil. Place the rose centrally in the hole and check the level before backfilling with soil. Firm in gently and give another good drink of water. Aim to plant about 5cms below the original planting depth. On a bare-rooted plant, a tell-tale line will reveal the original soil level; green-coloured stems

indicate they were above the soil, whereas brown stems were underground. Roses, particularly newly planted specimens, can 'rock' in windy conditions and may lever themselves out of the ground. Planting slightly deeper will resolve this.

Blackspot, rust and mildew are the problems most likely to affect roses. These fungal infections are caused by microscopic spores blown on the wind or carried in water droplets. Fortunately, they usually cause temporary disfigurement, not permanent damage, although a severe infestation will defoliate and

weaken a plant. Sprays can treat these conditions — follow the instructions carefully. Spray in a preventative fashion by starting early in the season when foliage is just unfurling, (even if the leaves appear clean) otherwise any dormant overwintering fungal spores will quickly infect new growth.

Regular spraying will greatly reduce, but never eradicate fungal damage. Practising good garden hygiene is the best long-term solution; a well-grown plant is better equipped to cope with pests or disease. Pick up fallen rose leaves as they are a perfect breeding ground for spores.

Apply a thick mulch every spring, adding general-purpose fertiliser or well-rotted manure. A foliar feed applied every 10-14 days throughout the summer will give a real boost — especially to pot-grown specimens. Regular deadheading will promote new flower buds. Given a little care, these long-lived plants will reward you for many years. Somewhere in a celestial realm, Josephine and Cleopatra are dreamily flicking through rose catalogues. Needless to say, they both have roses named after them. Fit for a Queen, indeed. ☺



Double glazing specialists now offer finance



UPVC



Doors



Conservatories



Windows



For more information, call Gary and the team at Trinity Windows IOW without delay, on **07912 934 679**.
www.trinitywindowsiow.co.uk

We accept card payments



GRASS CUTTING
OFFERING A GRASS CUTTING AND
STRIMMING SERVICE
ALL SIZE LAWNS
RIDE ON MACHINES FOR LARGER AREAS
ONE OFF OR RETURN
CUSTOMERS WELCOME
TRIM & STRIM
07593 501 975

JOSH KERLEY
TREE SERVICES
✓ All aspects of tree work undertaken
✓ NPTC Qualified and fully insured
FREE NO OBLIGATION QUOTES
TEL: 07875021682
Email: info@joshkerleytreeservices.co.uk
www.joshkerleytreeservices.co.uk

ACER
RECLAMATION
WANTED: Red & Yellow Bricks,
Floorboards, Flagstone, Welsh Slate,
Chimney Pots & Stained Glass.
Call: **01983 565761**
or **07973 745428**
www.acerreclaimed.co.uk

YOUNG
PLUMBING
PLUMBING & HEATING SERVICES
Tel: **01983 339671**
Mb: **07967 225030**
www.YoungPlumbing.co.uk

A&E BUILDERS
BUILDING & CONSTRUCTION SERVICES
No job too big or small!
EMAIL: aebuilders71@gmail.com
• DRIVEWAYS • PATIOS • EXTENSIONS
• SPECIALIST BRICKWORK
• ORANGERIES • PORCHES
• DRAINAGE & HOUSEHOLD MAINTENANCE
Call for a no obligation free quote from a builder with
over 30 years experience. Public liability insured.
TEL. 07525700980/01983 883787

N.P.WALDEN
ELECTRICAL
Domestic Installer
NICEIC Registered
01983 401078
07702 905876
nicholas.walden@btinternet.com

The Island's
**CARPET & FLOORING
SUPERSTORE**

D&S
CARPETS

OPEN 7 DAYS A WEEK
MON - FRI 9AM - 6PM
SAT 9AM - 5PM
SUN 10AM - 4PM
01983 533150
12 Hurstake Road, Riverway Industrial
Estate, Newport, Isle of Wight,
PO30 5UU (next to Jollyes)

NO DEPOSIT
INTEREST FREE
CREDIT

Subject to status on orders over £495*

D&S Carpets are authorised and regulated by the Financial Conduct Authority. We are a credit broker not a lender - credit is subject to status and affordability, and is provided by Hitachi Capital (UK) PLC. Terms & Conditions Apply.

*Excludes fitting charges

f i a www.dscarpets.co.uk

Rugs | Luxury Vinyl Tiles | Wood & Natural Flooring | Vinyls | Carpets



Blanchard Fields, Brighstone

We are currently releasing phase one of the development
and will be taking reservations now.



Blanchard Fields is a brand new development with a mixture of housing.

- **Self Build Plots**
- **Over 55's Housing**
- **Full market Housing**

Priority is given to local persons with a connection to the area, for further
information regarding this a brochure is available upon request.

For more information on the development contact our New Homes
Department on **01983 538080** or email: **newhomes@hrdiw.co.uk**



Cherry Tree
shutters
Changing your view

**20%
SALE
NOW
ON!**

01983 640174

www.cherrytreesshutters.co.uk

Providing interior plantation shutters to cover any window style or colour including; Square, Rectangle, Circular, Arched, Bays and Patio Doors.



*Terms & Conditions Apply

Checkatrade.com

**0%
FINANCE
AVAILABLE**

ST HELENS SERVICE STATION

ALL MAKES SERVICE & DIAGNOSTICS

Factory level diagnostics & services for BMW, Volvo, Peugeot, Citroen and Renault
Genuine parts supplied for Jaguar, Land Rover and Porsche



VOLKSWAGEN • PEUGEOT • RENAULT • CITROEN • BMW • MERCEDES



**MOTs AVAILABLE FOR ALL
MAKES & MODELS**

Embankment Road, Bembridge PO35 5NS. Tel. 01983 872332 or 07920 224181

WIN! Can you spot the differences?



COMPETITION

Take a much-needed break at The Retreat in Newport, known for its incredibly popular breakfasts. Located tucked away in Scarrots Lane, in the town centre, The Retreat is open for breakfast, lunch and main meals. Guests are welcome to sit in the sunshine or indoors in the pretty café. All products are locally-sourced and home cooked to order and you'll receive a warm welcome from friendly staff. The café recently passed all Covid-secure measures.



THIS MONTH'S PRIZES...

T&Cs apply



Breakfast for two including drink
Courtesy of the Retreat Cafe
10 Scarrots Ln, Newport PO30 1JD
Tel: 01983 533031



Two adult Warrior Festival wristbands
Courtesy of @WarriorFest10W



Pair of Saturday Shopper tickets
Courtesy of Solent and Wightline Cruises
www.solentcruises.co.uk



Bottle of Prosecco for four
Courtesy of The Lawn Bar
www.northwoodhouse.org/event/the-lawn-bar-summer-weekends

PRIZE PREFERENCE (CHOOSE ONE ONLY):

1 ☐ 2 ☐ 3 ☐ 4 ☐

NAME:

TEL:

ADDRESS:

POSTCODE:

E-MAIL:

☐ I am happy to be contacted by the sponsors for marketing purposes

☐ I would like to receive Beacon Magazine's weekly email newsletter with more competitions

Closing date - 31ST JULY 2021

Send your entries to: **IW Beacon Competition, 8-10 Dodnor Park, Newport, Isle of Wight, PO30 5XE**
When sending your entry to us you MUST ensure that you use the correct postage. Terms and conditions available on request.
Prizes must be claimed within 30 days of the draw date. Previous winners can be found on our Facebook and Twitter pages.
Winners will be contacted by phone.

Did you know...

You can take a photo on your phone and email your entry to win@iwbeacon.com.



BOOK A TEST DRIVE

**GO ON,
TAKE A TEST GLIDE**

SUSPENSION WITH
PROGRESSIVE HYDRAULIC
CUSHIONS[®]
ADVANCED COMFORT SEATS

[BOOK NOW >](#)

THE FRENCH
CAR THAT
SPEAKS YOUR
LANGUAGE



NEW C4



C5 AIRCROSS SUV

CENTRAL GARAGE (NEWPORT) LTD THE ISLAND'S LOCAL CITROËN AND SUBARU DEALER

The dealership offers new and used car sales, as well as servicing, repairs and parts for all makes and models*. Central Garage can offer test drives, nationwide delivery and a free Islandwide vehicle collection and drop off service. Can't get to the garage in person? Central Garage is also offering home test drives and a digital showroom with video walkrounds and personalised presentations. Citroën offer an excellent selection of vehicles, all built with comfort, design and technology in

mind, ranging from Citroën C1 'City Car' to the C5 Aircross Hybrid 'Silent Urban Vehicle'. Selected models have the option of petrol, diesel or hybrid engines with the NEW E-C4 100% ELECTRIC also now available! Subaru UK's range of all-wheel drive SUV and family cars include the all-new Forester and XV E-Boxer self charging hybrids, as well as Outback, Levorg, Impreza and BRZ. Take a test drive and experience the outstanding safety, capability and reliability offered by Subaru.

CITROËN MOTABILITY FROM NIL ADVANCE PAYMENT



Selected models. Ts & Cs and eligibility criteria apply. See motability.co.uk



**NEW CITROËN
C3 AIRCROSS SUV**
ADVANCED
«GET COSY»
COMFORT SEATS
NOW AVAILABLE TO ORDER



THE FRENCH
CAR THAT
SPEAKS YOUR
LANGUAGE



**A NEW
GENERATION OF
ADVENTURE IS
WAITING TO BE
DISCOVERED.**

INTRODUCING THE ALL-NEW
SUBARU OUTBACK.



**ALL-NEW FORESTER
AND XV E-BOXER.**



Discover Hybrid, the Subaru Way.



Riverway, Newport, Isle of Wight, PO30 5UX
TEL: 01983 526541 sales@centralnewport.citroen.co.uk