

CENTRAL AND
WEST WIGHT

Pick up your FREE copy

Beacon

June 2021

INTERVIEW

JAMES
EARL
JONES

RECIPE

CHICKEN
BUDDHA
BOWL

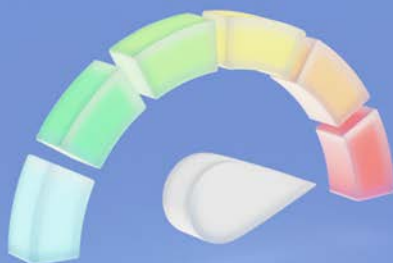
HISTORY

THE
CASTLE
INN

CREATE
YOUR
OWN HERB
GARDEN

900Mb –
Yes Please!

Ultrafast broadband only
from WightFibre



wightfibre
because we care

Order online at wightfibre.com
or call 01983 240240

A Different Kind of Broadband Full-fibre • Ultrafast • Future-proof



GreenMeadows
Independent Island Living

OVER 55,
BRAND NEW
EXTRA CARE
SHARED
OWNERSHIP
APARTMENTS



SHOW APARTMENT AVAILABLE TO VIEW

All residents can be supported by the Wellbeing Team who are there to help everyone feel settled, supported and safe; this unique Wellbeing service can respond to your needs 24hrs a day on an unplanned care basis, enabling you to live independently in your own home.

To feel part of a community, there is access to activities every day such as:

- Minibus outings
- Scheme shop
- Hairdressers
- Beauty treatment room
- Reception desk 7 days a week
- Laundry room
- Fitness room
- Communal lounge
- Dining room

All apartments are built and equipped with emergency pull cord which connects you to 24 hours a day staff on site who can respond in a serious emergency for your peace of mind.

For more information regarding shared ownership,
or to speak with someone regarding renting,

please call **0808 1699788** or
email **newhomes@hrdiw.co.uk**



In Partnership with





Welcome from the EDITOR

Wow, we're halfway through the year already! How did that happen?

Hopefully now businesses are open again, we can start to enjoy the full breadth of what our Island has to offer in the coming months.

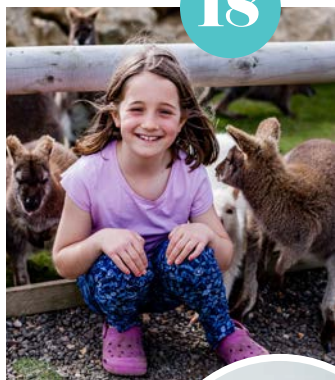
In this month's Beacon, we bring you details of great places to go — whether you're after a family day out, a drink in a traditional Isle of Wight pub, or a good old knees up (yay for festivals and events!).

We also delve in to more fascinating Isle of Wight history and John Hannam shares his interview with the voice of Darth Vader and The Lion King's Mufasa, the incredible James Earl Jones.

Enjoy!

Amy Shephard

Editor amy.shephard@iwbeacon.com



18



Photo courtesy of Steve Beiden

- 5 John Hannam meets James Earl Jones
- 7 The History of The Castle Inn
- 9 Walking the Island: The Tapnell Trail
- 11 Recipe: Grilled Chicken Buddha Bowl
- 12-13 The Entertainment Guide
- 15 Father's Day
- 18-19 From Dairy Farm to Tourism Destination: Tapnell Farm
- 20-25 News from your area
- 31 Create your own herb garden
- 35 Spot the Difference competition

Beacon

MAGAZINE

IW Beacon Media Centre, 8-10 Dodnor Park, Newport, PO30 5XE

CALL US
01983 433112

FACEBOOK
iwbeacon

TWITTER
@iwbeaconmag

VISIT US
iwbeacon.com

INSTAGRAM
@beaconiow

EMAIL
hello@iwbeacon.com

totalsensemedia

Vehicle Consulting



Looking for a new car or van?

There is another way...

We can source and deliver any make or model of new vehicle to your door, with multiple finance options.



Cars, Vans or Electric
Personal, Business or Fleet

Vehicle Consulting

THE ISLAND'S LEASING AND FINANCE SPECIALIST

For the latest offers and more details,
visit vehicleconsultingsolent.com
or call 01983 632 562.



FRONTROW
GROUNDWORKS
ISLANDWIDE

Fully insured
28 yrs experience
Reliable!

Fencing

Removed - Repaired - Replaced
All types of fencing undertaken
Quality materials used • FREE quotes



Call Andy 07817 979501
or 01983 863348

frgworks@icloud.com

PLUS Landscaping • Turfing • Driveways • Pathways • Decking
• Drainage • Tree & Hedge maintenance & removals
• Footings • Garden walls • Guttering

BOOK A TEST DRIVE

**GO ON,
TAKE A TEST GLIDE**

SUSPENSION WITH
PROGRESSIVE HYDRAULIC
CUSHIONS®
ADVANCED COMFORT SEATS

BOOK NOW >

THE FRENCH
CAR THAT
SPEAKS YOUR
LANGUAGE



NEW C4



C5 AIRCROSS SUV

CENTRAL GARAGE (NEWPORT) LTD THE ISLAND'S LOCAL CITROËN AND SUBARU DEALER

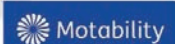
The dealership offers new and used car sales, as well as servicing, repairs and parts for all makes and models*. Central Garage can offer test drives, nationwide delivery and a free Islandwide vehicle collection and drop off service. Can't get to the garage in person? Central Garage is also offering home test drives and a digital showroom with video walkrounds and personalised presentations. Citroën offer an excellent selection of vehicles, all built with comfort, design and technology in

mind, ranging from Citroën C1 'City Car' to the C5 Aircross Hybrid 'Silent Urban Vehicle'. Selected models have the option of petrol, diesel or hybrid engines with the NEW E-C4 100% ELECTRIC also now available! Subaru UK's range of all-wheel drive SUV and family cars include the all-new Forester and XV E-Boxer self charging hybrids, as well as Outback, Levorg, Impreza and BRZ. Take a test drive and experience the outstanding safety, capability and reliability offered by Subaru.

CITROËN MOTABILITY FROM NIL ADVANCE PAYMENT



Selected models. Ts & Cs and eligibility criteria apply. See motability.co.uk



NEW CITROËN C3 AIRCROSS SUV

ADVANCED
«GET COSY»
COMFORT SEATS

NOW AVAILABLE TO ORDER



THE FRENCH
CAR THAT
SPEAKS YOUR
LANGUAGE



**A NEW
GENERATION OF
ADVENTURE IS
WAITING TO BE
DISCOVERED.**

INTRODUCING THE ALL-NEW
SUBARU OUTBACK.



ALL-NEW FORESTER AND XV E-BOXER.

Discover Hybrid, the Subaru Way.



Riverway, Newport, Isle of Wight, PO30 5UX
TEL: 01983 526541 sales@centralnewport.citroen.co.uk



A day to remember with

JAMES EARL JONES

With little space in between, I'd been in the company of both David Prowse, who was inside the figure of the iconic villain, and James Earl Jones, who provided the unmistakable voice.

James was the world renowned actor who'd appeared in over 100 movies, including *The Hunt For Red October*, *Conan The Barbarian*, *Cry The Beloved Country*, *Field Of Dreams* and *The Great White Hope*. And who could forget his voice for Mufasa in Disney's *The Lion King*?

When my daughter, Caroline, was still at school she often came with me on theatre interviews and met numerous famous actors. That eventually led her to a career as a West End wardrobe supervisor. On this occasion the roles were reversed.

She was working at London's Wyndham's Theatre with the hit show *Driving Miss Daisy*, which starred Vanessa Redgrave and James Earl Jones. She set up our interview.

I was not surprised to instantly discover he was such a charming, caring and modest world-famous movie star. My adrenalin was certainly flowing and I was so thrilled to be in his company. He was very perceptive, too. I wasn't quite sure how much time he could spare me, as he had specifically arrived early before his matinee performance, just to see me. He quickly sensed I was rushing a wee bit and told me to take my time as he could spare me an hour.

James had a real problem with a stammer and from the age of six until he was 14 he was mute and only

A surprise Christmas present arrived for me on December 12th, 2011, when I achieved a unique double that would have been a perfect dream for millions of Star Wars fans. In less than two months, I'd interviewed both the actor and voice of Darth Vader.

By John Hannam

talked to himself and animals. The latter responded to the attention he gave them, with no feedback.

"Going to high school changed my life and it was all down to my English teacher, who wrote poetry. He couldn't handle my problem. Somehow he found out that I also wrote poetry and tricked me into reading one of them out loud to my class and I had no problem with it," revealed James, who ended up being the school's champion of public speaking.

Obviously, the subject of Darth Vader just had to come up. When I suggested it had been such a part of his life he said: "no," and explained why.

"It's been a big part of Dave Prowse's life. I was not the character. Dave was

the character. He was in there sweating every day. I was just special effects and originally didn't even want my name on the credits."

I did present him with a CD of my interview with David Prowse, who had so much respect and admiration for James. He took it back to the States after the London season ended.

David and James were hoping to finally meet up. I am not sure they ever did, although they tried between their various career schedules. Sadly, David died in 2020.

Incidentally, when I'd left his home in Croydon, a few weeks earlier, he'd teased me and offered to see me across the busy road. Well, he had been the famous Green Cross Code man!

I stayed on at the Wyndham's Theatre to see the matinee master class of *Driving Miss Daisy*, with Vanessa and James. Unforgettable.

I did manage to surprise James — and he loved it. There is a Norwegian rock band called the James Earl Jones Barbershop Explosion. He knew — but had never heard their music. So I put that right. **B**

I was just special effects and originally didn't even want my name on the credits





FYTbus is a scheduled volunteer-run bus service running every weekday morning serving the communities of Freshwater, Yarmouth & Totland.

We also provide subsidised direct transport to **St Mary's Hospital, Brookside Health Centre** and other medical appointments from our area.

On Saturdays we run a regular door-to-door shopping trip from West Wight to the major Island supermarkets.

For further details of all our services or to volunteer

01983 752917 (weekdays 09:45 to 12:30)

fybustotland@gmail.com www.fytbus.org.uk

or find us on Facebook



The Castle Inn

WE'RE BACK!

GOOD FOOD, GOOD BEER, GOOD TIMES!
Family Friendly and Family Run



Our Special Offers!

Monday to Thursday - two light bite dishes just £10

Friday steak night from £6.75.

Booking Advised



91 HIGH STREET, NEWPORT PO30 1BQ

01983 522528



Finding Forever Families



Is there space for a child in your life?

Talk to our friendly team and find out how your adoption journey could start today

You can be:

A couple or single • LGBT+ • Already a family • Disabled • Claiming Universal Credit
Renting, mortgage or shared ownership homeowner

We have BAME children who need their forever family.

Financial support available for siblings and children with complex needs.

0300 3000 011 • adoptsouth.org.uk



The Regional Adoption Agency for:



Hampshire
County Council



ISLE of WIGHT
COUNCIL



Portsmouth
CITY COUNCIL



SOUTHAMPTON
CITY COUNCIL



Photos courtesy of Steve Berden. From 1944.



Spot the signs pointing people to the nearest air raid shelter and public gas cleaning centre.

Sword Fights, Ghost Stories & Hidden Passageways at The Castle Inn

Dating back to 1550, The Castle Inn is the oldest public house in Newport.

Over the many years since it was first licensed, its fascinating past includes sword fights, ghost stories, hidden passageways — and many, many shared pints.

It is largely speculated an underground passageway linked The Castle Inn with Carisbrooke Castle in its early years, although many people dispute this.

Landlord, Simon Cant, told us the tunnel was said to be used to bring King Charles I quietly over for a drink. The entrance to the alleged tunnel is filled in now, as is the original staircase to the old upstairs brothel — although you can see both proudly displayed behind glass when you stop in for a drink.

In the past, The Castle has hosted a cock fighting pit, a skittles alley and a stable for travellers to rest their horses, while they stop for refreshment.

There's stories of an old stable boy who still hangs around the building leaving five pence pieces to be found. He's said to have come to a grizzly end in the cellar, after failing to repay a debt.

The late Brian Greening, a popular Isle of Wight historian, said on Facebook: "A soldier gate crashed a private party, an argument arose, and a sword ended a man's life. Chased up Carisbrooke Mall, caught and ultimately hung. Would need to check the date but circa 1820."

The pub has been featured in many local ghost walks over the years, and was subject to a very eventful medium visit in recent years. If you like ghost stories, you can watch a video of the event by searching Over Night Stay At The Castle Pub! on YouTube.

Rebuilt after a devastating fire in 1684, The Castle Inn's bricks were imported from France. Although the side wall, which can be seen from Mill Street, dates as far back as the 13th Century when it was said to be a den for thieves and vagabonds.

The building, including Stable Bar, windows and even the window frames are listed. And original beams still stand proudly in place. There's also beautiful flagstone flooring, which has been walked on by many notable people over the years.

"If the walls could speak," says current landlord, Simon Cant, "they'd tell some unbelievable stories."

The Castle has had many different landlords and

landladies over the years. Many remember knocking on a hatch at the bar to be served.

Islanders have many fond memories of landlady Edna Tibbenham in her cubbyhole, doing a crossword or some knitting.

Frank Lyons said: "The Castle was where I mis-spent my youth. The low ceiling darts room with a board on the ceiling to protect it from darts, the round table room and the benches with holes in to accommodate gentleman sitting with swords (so I was told)."

In 2018, Simon Cant and Liam White, took over the pub — and love to talk to visitors about the Castle's fascinating past. Now a friendly, traditional, public house, The Castle is a warm and welcoming spot for families and a great place for evening entertainment on Friday and Saturday nights. 🍷

There's stories of an old stable boy who still hangs around the building leaving five pence pieces to be found



The old staircase and entrance to the alleged tunnel.



We offer genuine caring people who will give you a standard of care and support that can really make a difference to your life.

Services we offer include:

Personal care, medication, shopping, help around the house, going in/out of hospital, specialised needs, companionship, holiday/mainland assistance, day sits, sleep-ins, 24/7 care/assistance.

We can visit you to discuss what you require, under no obligation and plan a way forward that suits your requirements. All staff are police checked and fully insured. CQC registered.

Do you need assistance to have the quality of life that you deserve?

Don't just think
care - SAY care
**NOW
RECRUITING**

 **Say Care Limited**
Liber Libera, Liberum

Afton Road, Freshwater (opposite garden centre)

For a full price list or further information please contact:

Telephone: **01983 716686**

Email: **saycarelimited@gmail.com**

www.saycare.co.uk

Make a Will with **Mountbatten**

"I'm leaving a gift in my Will, so Islanders get the same support me and Joe had."



Start your **FREE Will** today. **mountbatten.org.uk/freewill**





Photo: Stephanie Mackrill

Distance: 6.5 miles
Walk Time: 3 hours

The Tapnell Trail runs through the middle of Tapnell Farm, on the outskirts of Yarmouth. It's an incredibly scenic circular walk, which can be completed in sections, or in full at 6.5 miles.

Walkers can enjoy the open countryside and the views over the iconic 1970 Isle of Wight Festival site, which hosted the incredible Jimi Hendrix, The Doors, Joni Mitchell, The Who and many more. From 26th-31st August 1970, Afton Down, saw up to 700,000 music lovers descend on the farmland. It was one of the largest festivals of its time. The walk is mostly flat, with no stiles or steps, but you will pass through a couple of gates and may come across some



Isle of Wight Festival 1970. Image courtesy of CameronLife Library.

muddy ground, so wear wellies if you can. It's perfect for all ages and abilities, so makes a great family walk, with plenty

of wildlife along the way. Start at Tapnell Farm. You'll head in the direction of The Causeway and down towards Freshwater Bay, before looping back on yourself in the direction of Wellow Down, until you return to where you started. Once you've finished your walk, there's the added bonus of stopping off at The Cow at the end for a bite to eat or a much deserved cuppa or glass of wine. Booking advised. The walk was developed by IW Ramblers in 2013.

“ Walkers can enjoy the open countryside and the views over the iconic 1970 Isle of Wight Festival site ”





SOLENT & WIGHTLINE CRUISES

EVERY SATURDAY & SUNDAY (weather depending).

Departs Thetis Wharf, Cowes (next to the Chain Ferry) at **0930 hours** to Gunwharf Quays, Portsmouth. Returning at approximately **1700 hours** from Gunwharf Quays back to Thetis Wharf, Cowes. (Please listen out for announcements for exact time). **Adults £9 / OAPs £8 / Children £7.**
Price does not include admission to attractions

Booking is essential before travelling.

Call us on 01983 564602 or go to our website www.solentcruises.co.uk to book and pay online.

Sailings are subject to any COVID restrictions in place at the time. Please contact the office to confirm



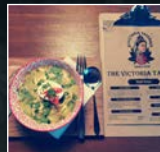
FACE MASK to be worn at all times



ISLAND ESSENTIALS FRESH & HANDMADE WITH FREE DELIVERY!



GRACESBAKERY.UK/SHOP - 01983 566868



**NEW FOOD MENU, NEW LOOK INSIDE,
COSY SUN TRAP GARDEN AND
JUST TWO MINUTES FROM THE
RED FUNNEL FERRY.**



SPECIAL OFFER

20% off with this voucher

Thursday 5pm-9pm

Friday lunch 12pm-3pm*

**Bring this voucher with you
*Until June 30th 2021**



**The Victoria Tavern
62 Clarence Road, East Cowes
PO32 6ET. Tel: 01983 296472**



Cucina

MEDITERRANEAN RESTAURANT



Welcome to Cucina Bar & Restaurant

**A taste of Italy & Mediterranean
Cuisine on your doorstep!**

OPEN 7 Days a week

**Takeaway also available
across the West Wight**



☎ 01983 761176 🏠 www.cucina-iow.co.uk

INGREDIENTS

Two chicken breasts
400g can of chickpeas
Sprinkle of salt
Tbsp chilli powder
One avocado
One red pepper
One red cabbage
One red onion
One cup of cooked rice
Black sesame seeds to
sprinkle over the top
(optional)

For the marinade:

One lemon for zesting
Six tbsps olive oil
Four garlic cloves
Pinch of salt and pepper
Half tsp Oregano
One tsp dried Thyme



SERVES

2

METHOD

1 Wrap your chicken in cling film and pound with a meat mallet or rolling pin to tenderise it. Set aside and make your marinade.

2 Zest your lemon. Mince your garlic cloves and combine with all the other marinade ingredients.

3 Place your marinade in a freezer bag, add the chicken and rub to coat. Place in the fridge for at least four hours.

4 In a separate bowl, mix a drained and rinsed can of chickpeas with a teaspoon of vegetable oil and a tablespoon of chilli powder. Spread on a covered baking tray and bake for 25 minutes, before taking out to cool and sprinkling with salt.

5 On a high heat, grill each side of the chicken until cooked. This should take a couple of minutes each side.

6 Slice your chicken and share between two large bowls alongside a portion of rice and a portion of spiced chickpeas in each.

7 Now add sliced avocado, red pepper, red onion and red cabbage.

8 Sprinkle with black sesame seeds and enjoy. 🍴

Grilled Chicken BUDDHA BOWL



One mouthwatering meal which is guaranteed to give you your five a day is a Buddha Bowl. You can make these with anything you like really — the more colourful the better! But here we're making a healthy and flavoursome grilled chicken and rice Buddha Bowl, packed with fruits and vegetables.



JACK UP THE 60s

WITH THE ZOOTS

★★★★★
 "...IMPOSSIBLE NOT TO LIKE...
 A VERY IMPRESSIVE BAND" THE STAGE

THE BEATLES, THE STONES, THE KINKS & MORE

SHANKLIN THEATRE
 ISLE OF WIGHT

Jack Up The 60s with The Zoots

**AUG
13TH**

Escape to the sixties this August! Owing to popular demand, Jack Up Events are bringing back the good times with a very special 'Jack Up The 60s' evening featuring multi-talented 5-piece band The Zoots.

This is THE '60s show that's wowing audiences around the world, selling out venues from the London Palladium to Old Trafford.

The Zoots are here to make your whole family bop to the iconic '60s beats that everybody loves. This performance is packed full of wall to wall hits and accompanied by stunning visual effects ensuring an impressive and authentic journey of discovery ...or a trip down memory lane!

Jack Up the Summer festival, which celebrates the music of the 80s and 90s will also make a welcome return this year from August 6-8th. shanklintheatre.com

Fun in the West Wight

Enjoy swimming lessons, climbing sessions and pre-sailing skills, among other fun activities during half term and beyond at West Wight Sports & Community Centre.

Fun hours and general swim sessions are also available to book eight days in advance. Booking is essential and places are limited. westwight.org.uk




Sponsored by
RED FUNNEL

ISLAND HIGHLAND GATHERING
 GREAT DAY OUT
SUNDAY 18TH JULY
 10am start at Haversham Railway

Wight Hot Pipes
 The Crew
 Dartford and District
 The Dance Preachers
 Glendart Pipe Band
 Reading Pipe Band

Medina Marching
 Isle of Wight Pipe
 Rose and Thistle P
 White Rose Highland
 Bloodstone Border
 And much more...

Highland Dancing Classic Cars Bar BBQ Whisky Tasting Scottish Food
 Tickets available at www.iwsteamrailway.co.uk/event/island-highland-gathering or Tel: 01983 7

Island Highland Gathering

Enjoy a day of musical entertainment and traditional Highland food and fun at the Island Highland Gathering, featuring the Scots Guards Association.

See the amazing 42nd Highland Regiment of Foot (1815) Black Watch regiment re-enactment group and their muskets battles.

Celtic folk music bands, Medina Marching and much more.

The Isle of Wight Railway will host the gathering for the first time in 2021. In aid of local charity Aspire. Supported by Red Funnel Ferries. For further details see islandhighlandgathering.com

**JULY 18TH
10AM-6PM**



**Northwood
House
Tea garden**

ENJOY TEA, CAKES
 AND CREAM TEAS ON
 THE LAWNS!
**OPEN EVERY SUNDAY
 11am-5pm**

The Entertainment GUIDE

Visit iwbeacon.com to see our full events guide



25% OFF!
BIKE WEEK


Have a Roarsome Half Term

There's plenty to do at the Wildheart Animal Sanctuary this half term, with a treasure hunt, pebble painting, animal talks, meerkat encounters, goat grooming and the chance to build your own wildlife garden.

In addition, it's bike week – so the sanctuary is offering 25% off admission and items in the café if you cycle to the sanctuary, from 30th May to 5th June.

Simply show your bike to staff and get a stamp on your hand upon entry.

The Wildheart Trust is also launching an exciting art competition, aimed at artists of all ages or abilities. See page 22 for more details.

Find out more at wildheartanimalsanctuary.org



VENTNOR
FRINGE
ISLE OF WIGHT

Extended Line Up for Ventnor Fringe

By Iona Stewart-Richardson

The multi-award-winning arts festival, which features gigs, comedy and performances in pop up venues throughout Ventnor, will return from 23 July - 1 August.

In recent years it has become an important testing ground for artists premiering new material, running in the lead up to Edinburgh Festival Fringe.

A host of new acts have been announced including:

- RuPaul's Drag Race UK contestant Joe Black who will be previewing new show 'Decopunk' plus 'Work In Progress'
- Performances from comedians Lou Sanders (Taskmaster, Travelman, QI)
- Geoff Norcott (Live at the Apollo, Mash Report, Mock the Week)
- Tez Ilyas (Tez O'Clock Show - Channel 4, TEZ Talks - BBC Radio 4, Man Like Mobeen - BBC Three)
- Musical comedy duo Flo and Joan.

JULY 23RD
- AUG 1ST

Families with younger children will be excited by a new 'Mini Fringers' event featuring popular TV presenter Andy Day with his 'Dino Raps' live show, and for the first time at the Fringe a visit from the Circus! Featuring Acrobatics to Trapeze, Comedy to Juggling, The Greatest Showpeople! Will be heading to the Big Top in Ventnor Park.

Music fans won't be disappointed with the festival building on its reputation for showcasing some of the best new music around.

This year's programme will feature live shows with Indie favourites Gengahr, post punk, art rock trailblazers Do Nothing, the Cumbria vibes of Los Bitchos and outstanding breakthrough act Billy Nomates.

All events at Ventnor Fringe are individually ticketed, with capacities in all spaces kept to small numbers to ensure the best possible chance of the event going ahead as planned this summer.

Tickets are available from Ventnor Exchange and at vfringe.co.uk

Northwood House Tea Garden

The Northwood House Tea Garden in Cowes is open again on Sundays throughout the summer from 11am-5pm.

There's nothing more British than enjoying a cup of tea and a delicious slice of cake or a cream tea on the lawns of a grand manor house, so gather some friends and family and head to Northwood House.

Covid-safe policies are in place for your peace of mind.

More information at northwoodhouse.org or call 293642.

Bookings Now
Being Taken at
Six Great
Character Inns

Book now for

Fathers Day

Sunday 20th June

Treat that special
man in your life
to a fabulous
Sunday Roast
and a Pint of his
favourite tippie!



Dads Eat For £1!

As a thank you to all the great dads out there, we're offering a special **Dads Eat For £1** promotion on Sunday 20th June, from 6pm onwards with this voucher*



THE
**CRAB &
LOBSTER**
BEMBRIDGE

Tel: 01983 872244



THE
BUGLE INN
YARMOUTH

Tel: 01983 760272



THE
BUDDLE INN
PUB • DINING • SMUGGLERS

Tel: 01983 730243



THE
KINGS HEAD
YARMOUTH

Tel: 01983 760177



THE
SUN INN
HULVERSTONE

Tel: 01983 741124



THE
CAULKHEADS
SANDOWN

Tel: 01983 405080



Say thanks this FATHER'S DAY

Sunday 20th June

Give Dad the day off this Father's Day, or spoil him with a gift from one of the Island's great local businesses.

Whether he's a thrill-seeker, a music lover, or maybe just enjoys the finer things in life, you're bound to find something he'll love right here on the Island.

How about a ticket to the Warrior Festival

A host of Isle of Wight bands have rallied together to help raise funds for The Wight Brainy Bunch, a charity that provides support and financial assistance to families affected by brain tumours.

The family friendly festival invites everyone to come and enjoy a fun-filled day with a huge array of food options, bars and live music from the likes of Hashtag, The Ohmz, Foo Fighterz and many more with tickets priced at £10 and under 12s going free.

All proceeds will be going to The Wight Brainy Bunch and donations can be sent via the fundraiser on their Facebook page Warrior Festival IOW.

The Wight Brainy Bunch provides invaluable emotional and financial support to families devastated by brain tumours. Set up by Mark Grimes and his wife Kathryn, following Mark's diagnosis of a brain tumour in February 2015.

Anyone who wishes to get in touch can message the event page Warrior Festival IOW or email hello@warriorfestiow.uk www.warriorfestiow.uk

Ticket Link: book.events/warriorfestival/2021-08-07/29882

In association with The Wight Brainy Bunch.

August 7th at Sandown Airport



Put Dad on the podium

Take to the tracks this Father's Day, with a day out at Wight Karting, Ryde. Wight Karting offers the Isle of Wight's only all-weather outdoor 520m floodlit track providing unrivalled fun, excitement and safety for people of all ages: From ages 8 to 88 in their 4-stroke petrol karts. Buy gift vouchers to use any time this summer and put Dad in first place on the podium.

Purchase online at www.wightkarting.co.uk. Guaranteed smiles with every booking.

EQUIPMENT RENTAL · TUITION · ADVENTURES ON AND OFF THE WATER

FIND US ON THE DUVER ST. RELENS ISLE OF WIGHT POSS 195

KAYAKING
STAND UP PADDLEBOARDING
SAILING
WINDSURFING
MEGA SUP
CANOEING

TACKT ISLE ADVENTURES
The Island is our playground

01983 875542 · hello@tackt-isle.co.uk · www.tackt-isle.co.uk f t i

Take him for an action packed day with Tackt-Isle Adventures

Whether you're a seasoned pro, or you're new to outdoor adventures and fancy giving something a go, Tackt-Isle have all the kit, skills and experience to help you make the Island your playground. They offer watersports such as sailing, kayaking, stand up paddleboarding and windsurfing so why not buy a voucher from the website to give the gift of an experience this Father's Day.



Treat him to an afternoon tea with Grace's Bakery

Now you can enjoy a traditional cream tea delivered to your door. Spread handmade Hedgerow Jam on Grace's buttery scones while you sip Isle of Wight Tea. If you're still feeling peckish after that then you can slice up the chocolate marble loaf cake too! All packed into a recycled kraft box. Serves 2-4 people

What's Inside:

- 4 x Handmade Fruit Scones
- 1 x Chocolate Marble Loaf Cake
- 1 x The Island Jam Company Hedgerow Jam (200g)
- 1 x Wight Label All Day Breakfast Blend Tea (15s)
- 2 x Clotted Cream Pots

We value your independence

At Apex Prime Care we strive to make independent living possible for all.

We believe that home is where the heart is. We are passionate about maintaining your independence so you can continue to enjoy the comfort and security of your home.

From personal care to domestic visits, our carers can provide everything you need to remain independent at home with your loved ones.



Call our IOW Team on
01983 450 023

www.apexprimecare.org



ST HELENS SERVICE STATION ALL MAKES SERVICE & DIAGNOSTICS

Factory level diagnostics & services for BMW, Volvo, Peugeot, Citroen and Renault
Genuine parts supplied for Jaguar, Land Rover and Porsche



VOLKSWAGEN • PEUGEOT • RENAULT • CITROEN • BMW • MERCEDES



**MOTs AVAILABLE FOR ALL
MAKES & MODELS**

Embankment Road, Bembridge PO35 5NS. Tel. 01983 872332 or 07920 224181

READY TO LEAVE SCHOOL?

A TRAINING PROGRAMME WITH HTP IS THE WAY FORWARD – NOW MORE THAN EVER

If you're preparing to leave school, our programmes provide great opportunities to get working towards a dream career. Come to HTP for a change and a fresh start.

2021 is a year like no other. Young people leaving school or college are looking for the best way to train for a career or get straight into the world of work.

Our wide range of Full-time Courses provide you with the skills, experience and qualifications to progress directly into a job. Or if you're eager to get out there straight away, why not start a workplace Apprenticeship? It's a much faster way to progress your career than by doing A-Levels or going to university.

We have a proven track record in helping young people to kickstart their careers. Apply to HTP now and we can find you a course or Apprenticeship that will inspire you.

Try something new. Your future starts here!

Start as soon as you're ready • No tuition fees • Earn while you learn!



Visit <http.ac.uk> • Call 01983 533926

 **HTP** APPRENTICESHIP
COLLEGE



FROM DAIRY FARM TO Tourism Destination

Run by the Turney Family for almost 40 years, Tapnell Farm used to be one of the biggest dairy farms on the Isle of Wight with over 800 cows producing an amazing 24,000 litres of wholesome milk every day.

Today, still family run by brothers-in-law, Tom Turney and Tom Honeyman-Brown, the site in Yarmouth is the Isle of Wight's leading eco-tourism destination and home to award-winning Tom's Eco Lodge, Tapnell Farm Park, Isle of Wight Aqua Park, The Cow Restaurant & Bar and opening this June, Isle of Wight Football Golf — with as many eco credentials as there are fun things to do.

As you turn off the main Newport Road and drive up to the top of the hill, you're suddenly met with the most stunning countryside views in all directions including across to Tennyson Downs and

sea views out across the Solent.

For a rural farm destination, it is quite unique in the UK for its portfolio of accommodation and activities, all sited in this incredible location with space to roam, amazing sea views and stunning sunsets. From luxury glamping (safari tents, modulogs, wood cabins, eco pods, geodesic domes) and farm cottages to a large country manor house, there is accommodation to suit everyone and every occasion.

All activities need to be booked online in advance

In fact, Tapnell has become a favourite location for many Islanders who book short staycations throughout the year.

As well as the attractions and restaurant, day visitors can also enjoy archery and axe throwing, clay-pigeon shooting and amazing country walks, including the Tapnell Trail, a lovely 6.5m circular walk — which provides the perfect excuse to work up an appetite or walk off a lunch at The Cow Restaurant serving (and won awards for) the best burgers on the Island! It's dog friendly too! All activities need to be booked online in advance.

The first step in Tapnell Farm's diversification from a dairy farm started in 2012 with the opening of Tom's Eco Lodge — a glamping holiday experience, the first of its kind on the Island, which was purpose built to have minimum impact





on the environment. The building materials used were predominantly wood and natural canvas, and the Safari Tents (previously known as lodges) are sat on raised decking, reducing the impact on the land. Eco-friendly cleaning products are always used in all the accommodation.

Over subsequent years the farm has been developed and transformed, and sustainability is at the heart of everything the company does, whether it's taking water from their bore hole to supply the Farm, using the sun to make electricity for surrounding homes, powering their heating systems with their own biomass boiler or growing over 30 acres of new woodland and hedgerows. Their overriding ethos is to have minimum impact on the environment.

The Turney Family's golden rule is to pass on their farm in better environmental and productive health than it was at the beginning of their life's tenure.

There is still much to do and the family are certainly up for the challenge!

NEW THIS YEAR

It has been a challenging year for all businesses, especially for those in tourism, but the family are keen to progress with plans to develop their tourism offer to attract more visitors to the Island and support other local businesses. So, May half term sees the opening of five new luxury geodesic domes with en-suite

facilities and commanding the most stunning sea views across to Lymington and beyond.

There is also the opening of a second large adventure play barn in the Farm Park and then in June, look out for the opening of the Island's first Football Golf course. Fun for all ages, there will be two 9 hole courses, one more challenging than the other and the option to play all 18 holes. Again, with epic views of the West Wight.

MIX N' MATCH THE FUN – MAKE A DAY OF IT!

With so much to do at Tapnell Farm, why not make a day of it and mix n match the fun. Just choose a session or two – from Farm Park, Aqua Park, Archery & Axe Throwing, Football Golf – not forgetting a meal at The Cow. All attractions and The Cow (indoor seating) must be booked online in advance. www.tapnellfarm.com

SUMMER SEASON PASSES

Tapnell Farm Park's summer season pass is valid until 31st October 2021 and provides great value, especially if you're planning to visit the attraction three times or more this season. Priced at £35 per person – under 2s are free – the summer pass provides all weather indoor and outdoor play during the school holidays as well as term time.

As well as the attractions and restaurant, day visitors can also enjoy archery and axe throwing, clay-pigeon shooting and amazing country walks

The adult passes are also transferable when linked to a child's summer season pass.

MAY HALF TERM ACTIVITIES

From pedigree pigs to grumpy goats, get to know more about Tapnell's native animals on their fun Paddock Tours. Plus don't miss the three little Kune Kune pigs taking part in Trotter Training and showing how they've mastered some of the Crufts agility classics!

For full details and t&cs, visit www.tapnellfarm.com/play. 

Pic courtesy of Skarsgard



WIN A SUMMER PASS FOR TWO

Head over to our Spot the Difference competition on page 35 to enter.



INTRODUCTION
OFFER
10%
OFF BANNERS
QUOTE RAVEN10



WIDE FORMAT
BANNERS
POSTERS
CANVAS PRINTS
DIGITAL WALLPAPER
VINYL STICKERS



DIGITAL PRINTING
LEAFLETS
BUSINESS CARDS
NCR
BOOKLETS
STATIONERY

www.ravenprint.co.uk
studio@ravenprint.co.uk
01983 529044

THE **RYDE HOUSE GROUP** SUPPORT ADULTS AND YOUNG-PEOPLE WITH COMPLEX NEEDS

**RECRUITING
NOW!**



RYDE HOUSE GROUP

If you are passionate about people, why not consider joining our team here at **Ryde House Group?**

We have a range of positions available and no previous experience is required.

We also offer a fun & friendly place to work, 5.6 weeks paid holiday, staff gifts and company discounts!

Life changing support starts with you.



VISIT
RYDEHOUSE.COM
TO START YOUR RHG
CAREER

Snowdrops and Rosemary

EXCEPTIONAL PEOPLE. EXTRAORDINARY CARE

Care in *your* Home. Tailored to *your* needs

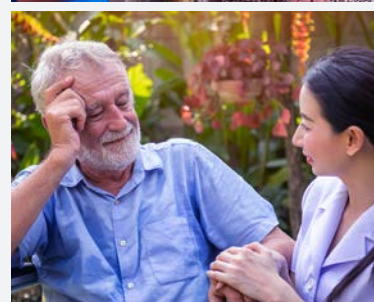
Our wonderful team can offer you the support you want, when you need it, so you can continue living from the comfort of your own home. With help from as little as half an hour a week to up to several visits a day or 24 hour support.

We are a family run business, who employ all our carers locally. As our carers are local, we provide support to clients in the Cowes, Newport and West Wight areas.

Snowdrops and Rosemary, Gurnard Pines, Cockleton Lane

☎ 01983293340 ✉ contact@snowdropsandrosemary.co.uk

🌐 www.snowdropsandrosemary.co.uk





Island Home Care

www.islandhomecare.co.uk



Where would you want to live if you needed help and assistance in your life?

Given the choice, many of us would answer without hesitation: "At home".

Island Home Care brings skilled care and support to those who prefer to stay in familiar surroundings while receiving tailored assistance.

- Privately funded care as an alternative to general home care placements.
- An holistic approach to the provision of professional care at home.
- Our mission is to ensure the dignity and self worth of our clients, and give each an excellent quality of life in their own home.



"Thank you and your team for all your kindness and care looking after my wife so well. Without your help she would have been in a Care home for months."

To discuss your particular requirements, get in touch on **07958 002508**

All staff are fully accredited with DBS clearance and Public Liability Insurance.



Never be short of company again
Join a community of like-minded friends and companions

**LAST
APARTMENT
REMAINING**



'Where your neighbours become your friends'

Beatrice Court, Hope Road, Shanklin, Isle of Wight, PO36 6FF

LAST CHANCE TO BUY!

Shanklin apartments for the Over 55s - From just £82,500

Enjoying life in a new home at Beatrice Court is more affordable than you think!

With low maintenance, well-equipped apartments available to move into, your living costs are likely to be much lower. That's because there are no gas or water bills to worry about, plus management fees are as low as £36 per week.

OUR LAST APARTMENT IS ON THE GROUND FLOOR WITH ACCESS TO OUTSIDE SPACE!



Call Philip, Ellen or Emily now at Hose Rhodes Dickson 01983 862147

www.beatricecourt.co.uk

Brought to you by
CaptivaHomes



News from Cowes Medina

by Cllr Lora Peacey-Wilcox

ELECTION! I won. My utter, sincere thanks to all those that have supported me on this process for over 22 years! Yes, it has been that long.....! As usual, many chose not to come out and vote, so a poor turnout. My supporters know that I am so very grateful to you all, for the hand holding, cake, words of encouragement phone calls and messages. You know who you are. Thank you.

TRAFFIC REGULATION ORDERS: Well, just when we are all adjusting to new positions and titles on the council and dealing with a multitude of other important issues, it is decided to bring forward the nine year issues (in some cases) of traffic orders. You will see them put on lampposts in your area. Please email the town council and your IW cllr so they know your views and email the PFI team and IWC.

PLANNING APPLICATIONS: Have increased greatly. Please look at applications. Your neighbours could be planning something at any time, please keep vigilant and inform Cowes Town Council and IW councillors of your concerns.

ELECTRIC CHARGING POINTS: Asked about this at the polling station. It's a tad more complicated than I thought. Organisations own the points; complicated when there are multi groups! None of which I have ever heard

of. I am liaising with IWC chap who has far greater knowledge. I will keep you updated, as it's rapid chargers that are needed and older ones need to be replaced or at least upgraded.

MAXTED CLOSE DISABLED RAMPS: Thanks to the resident that raised the issue that the work had not been completed. After a bit of delving it is due to be done on 18th May.

ARCTIC PARK AREA: Sadly there appears to be some issues over the areas use. Sad, could have been a nice area. I will contact the police with the issues raised.

OBSTRUCTIONS ON PAVEMENTS: Please can I remind you to be mindful when obstructing pavements. We have a number of elderly and partially-sighted residents who are not only finding it very difficult to get around Cowes, but are also not confident following being in during the pandemic. Oh and remove your bins.

TRIM YOUR BUSHES: I use the word trim because we have beautiful birdies nesting. Just carefully cut out those branches that would hurt and child in a pram or older person not being able to see too well.

Meanwhile, thanks for getting in touch, thanks for your support.

☎ 645765 📧 lora08@sky.com

FYTbus Adds to Fleet

If you live or work in the West Wight you'll be used to seeing FYTbus community minibuses as they travel around their weekday scheduled routes in Freshwater, Yarmouth and Totland.

Now the buses have been joined by a little brother; a wheelchair accessible car which is being used for trips to St Mary's Hospital and other medical venues by patients and their carers.

"Requests for transport to the hospital have really taken off during the lockdown," said Gareth Wyre who heads up the executive team at FYTbus.

"Having the car has taken the pressure off vehicle availability which means the minibuses are available, not



only for our scheduled routes but also to take passengers to Newport for shopping on a Saturday and get local schoolchildren to school in Yarmouth while the new school in Freshwater is under construction."

The service which is available to anyone in the area served by FYTbus is bookable via the FYTbus office in Totland (752917) for a suggested minimum donation of £7.50 for the return journey.

Buoys Installed to Protect Swimmers

By Iona Stewart-Richardson

Buoys are going to be installed to protect swimmers at both Totland Bay and a section of Colwell Bay.

Freshwater Parish Council submitted an application for them to deter powered crafts like jet skis and rigid inflatable boats from entering the area of water.

Totland Parish Council will be installing marker buoys at Widdick Chine and to the west of Colwell Bay from the slipway.

There will also be launching buoys off the Colwell Slipway - which is separate from the safe

swimming buoys on the east section of Colwell.

It's hoped the move will ensure that boats are moored at a safe distance and swimmers are safe within the zone and although they are different solutions the aim is the same — to prevent crafts from mooring inshore and protect swimmers.

The buoys, which have been approved by Trinity House, will be heavy-duty yellow marine compliant buoys that are anchored and chained.

At Widdick Chine they will be tethered and roped together to form a barrier.



TD HOMECARE SERVICES ARE RECRUITING...

Join Our Expanding Team!

- ✓ Permanent full time Carers required to join our team serving clients in the West Wight area.
- ✓ Different shifts available.
- ✓ Experience is preferred but we will provide full training and uniform to the right candidates.
- ✓ Excellent rates of pay with enhancements - Salary based on experience
- ✓ Own transport is necessary with all mileage paid.
- ✓ Proof of Covid vaccination required.

Contact Clare for more information and to book an interview

Tel: 01983 641815

**3 Whittingham Place
The Avenue, Freshwater
PO40 9UR**

Richmonds Bakery To Take Over Newport's Old Starbucks Building

By Amy Shephard

A popular Cowes bakery is set to expand — taking over the old Starbucks building in Newport.

Richmonds Bakery will open its second shop, at 95-96 St James Street, Newport in June.

Owner Immy Bowdon said:

"This last 18 months has been the most stressful time ever for most businesses. I honestly feel so unbelievably lucky to have not only survived but thrived.

"Don't worry we're still keeping our beautiful little shop in Bath Road,

Cowes — we're just adding to the Richmonds family."

The shop has been empty since October last year, when Starbucks vacated the premises.



Trinity Theatre To Welcome Back Audiences In June

It will surely be a case of 'third time lucky' for Cowes' Trinity Theatre when it is finally able to welcome back audiences for live theatre in June.

Curtailed twice due to Covid-19 restrictions, the theatre will, at last, be able to stage *Recipe for Murder* — its first performance since lockdown began in March 2020.

Director and Trinity Theatre President Dinah Bowman said: "At last! We are thrilled and full of renewed optimism at the return of live theatre. Everyone is chomping at the bit to get onto the stage — in what could be the most rehearsed play ever on the Island!"

Just 50 tickets per show are



Dinah Bowman



now on sale for the COVID-19 secure performances of *Recipe for Murder* (7.30pm, on 3rd, 4th and 5th June).

It is hoped the community will once again get behind and support their local theatre, which is home to Cowes Amateur Operatic and Dramatic Society.

Every precaution is being taken to ensure the performance is COVID-19 secure, including limiting audience numbers, ensuring seating is sufficiently spaced, providing hand sanitiser and ensuring face coverings are worn throughout the performance.

Tickets cost £7 and are on sale now at www.caods.org.



News from Cowes West

by Cllr Paul Fuller

ELECTION RESULTS: I feel privileged to be re-elected to represent our community. The results were confirmed as:

PAUL FULLER (INDEPENDENT)

1101 (77.4%) +1.2%

TIM JEFFERYS (CONSERVATIVE)

208 (14.6%) -4.9%

JOSH POINTING (LABOUR)

114 (8.0%) +3.0%

Thank you to everyone who took the time to vote, listen to candidates and chatted on the doorstep or when leaving the polling station. Please remember, I am here to serve you so don't hesitate to let me know if I can offer support.

DISABLED BAYS: I've received a plea concerning motorists parking in disabled bays. Please note, bays are requested to support residents who find it difficult or painful to walk any distance. Please avoid parking in bays, as more often than not they are essential.

GURNARD PUMPING STATION WORKS: Contractors have recently replaced and upgraded the Pumping Station, following ongoing rag/ textile and fat damage caused by residents inappropriately disposing of items. In the meantime, water quality at Gurnard is tested 'at least every week' by the Environment Agency, and has been classified as 'Excellent' for the past four years.

RESTART GRANTS: Support for Local Businesses: The IW Council are facilitating Government Restart Grants to support small businesses impacted by Covid. For details please visit: www.iow.gov.uk/news/First-businesses-receive-Restart-Grants

COWES MEDICAL CENTRE: A number residents have contacted me about getting through to Cowes Medical Centre by telephone. The response from the Centre is that wherever possible residents use E-Consult (on their website), or contact the Centre in writing highlighting your name and contact details.

PLANNING APPLICATIONS:

- Sunnycott Caravan Park, Rew Street. Extension of 8 units of accommodation: REFUSED
- 63 Solent View Road. Replacement Dwelling: APPLICATION MODIFIED
- Land adjacent to the Stables, Woodvale Road. Proposed Dwelling: REFUSED.
- The Dottens. Following a previous refusal, a revised Planning Application is pending.

☎ 289595/ 07935 090 835

✉ paulfulleriw@gmail.com

Victoria Antiques Shanklin

Do you have any unwanted gold jewellery or broken pieces?

What about silver?

Trays, pots or heavy chains gathering dust?

We also take pre 1947 silver coins which at present are very high prices.



Call us for a quote. We can pay you by cash, BACS, paypal or cheque.

Our safe environment shop has everything in place.

Monday to Fridays 10am - 3pm
50a Regent Street, Shanklin
Tel: 01983 863632



News from Central Newport

by Cllr Julie Jones-Evans

Thrilled to have been re-elected to represent Newport Central on the Isle of Wight Council and on Newport and Carisbrooke Community Council. I look forward to carrying on making improvements to our town and helping residents with their queries.

The Biosphere Garden near St Cross Court will be planted this month and is the first of our Newport Capital of the Biosphere projects. Just across the road I have had confirmation that the bank adjacent to the dual carriageway will be left uncut this summer (just a 1m cut on the edges for visibility), these small interventions make a big difference to wildlife and well-being for people.

The new toilets in Post Office Lane are proving popular and we are ironing out a few teething problems. Unfortunately people have been putting nappies down the toilet and causing unpleasant blockages. The police have reported a downturn in antisocial behaviour in that area and less signs of drug using, which was one of our aims. CCTV has just been installed which will contribute to the safety of the Lane.

NCCC has just agreed to purchase an empty property in the High Street so we can take a stake in the area and contribute to its regeneration. We will have our offices and meetings there, but also we are looking at a Newport focused heritage centre and some pop up shops.

We also have agreed a grant for a new weekly market in Newport, again to help regrow the County town.

☎ 521068/ 07886437688

✉ julie.jones-evans@iow.gov.uk

Get the Island Noticed for the Film and TV Industry

Promoting the Island as a destination to film makers and supplying everything the production team need, Isle of Wight Film Fixers have a catalogue of properties, services and vehicles to hire.

So how Islanders can get involved? Properties and vehicles

Register your property, shop, business, radio station, farm, church, stables, vintage cars, lorries, tanks, bikes, tractors etc at iowlocations.com. Productions will spend a lot of money bringing this over to the Island, when we already have it here. Plus locals get to have their beloved homes and vehicles in films, while earning from them.

Services

Register your services, whether you're an industry professional, a make up artist, caterer, sound crew, runner etc. Register at iowfilmfixers.co.uk



Island People

Register to be a part of a production, from professional actors to extras, Film Fixers provide options for film makers. They love local talent as they haven't got to spend loads of money bringing them over, supplying hotels and food. When a local can do the job and go back home until the next day. Plus, you'll get paid well.

Some families on the books get picked to have a day out at a resort playing and eating while being photographed — and paid. Register at iowpeople.co.uk.



Nlclinic
ISLE OF WIGHT

COVID-19 PCR TESTING ON THE ISLE OF WIGHT



From its Newport based clinic, NL Clinic Isle of Wight offer a fast and accurate service for fit to fly, test to release and 2/8 day testing.

TESTS AVAILABLE 7 DAYS A WEEK

Our Services

- Fit-to-fly from £69
- Test-to-Release from £149
- Home test kits from £60
- Antibody tests from £60
- Day 2 & Day 8 tests from £189

Why choose us?

- Multiple processing times
- Pre-booked time
- Same day available
- UKAS accredited laboratory

T: 0330 025 2028

www.nlcliniow.co.uk

62 Crocker Street, Newport, Isle of Wight, PO30 5DA

Teen with Rare Disability Fundraises For Children's Charity

By Iona Stewart-Richardson

An Isle of Wight teenager with a rare disability has raised nearly £5,000 for When you Wish Upon A Star.

Amelia Burns, who at the age of three was diagnosed with a very rare, life-limiting, neurological condition called MECP 2 Duplication Syndrome, took on the challenge of completing the Red Squirrel trails from Newport to Sandown.

Although her condition mainly affects males, at the time of Amelia's diagnosis she was the first female diagnosed in the UK and thought to be just the second case in the world.

Her family were told that she would be unlikely to make her teenage years, but she will be turning 17 in August.



Amelia, who is both physically and mentally disabled completed her ten-mile challenge on Sunday 9th May.

Her Dad Daniel said: "It was a great day, well other than the downpour halfway through for an hour, but thankfully the sun came out again for the finish."

"I wish to thank everyone for their support and donations. We have been totally blown away by the love people have shown towards Amelia and their generosity."

"We know the good work the charity will do and how these funds will help make a wish come true for children with life-limiting conditions." **You can still make a donation by searching Amelia's Red Squirrel Walk on Just Giving.**

Wildheart Trust Launches Art Competition

The Wildheart Trust is launching an exciting art competition, the winners of which will see their creations sold in the Animal Sanctuary's shop.

Whether you're a complete beginner, budding artist or have a wealth of experience, The Wildheart Trust is inviting

everyone to create works of art that depict how nature helped them through lockdown. The entries will be judged by wildlife legend, Chris Packham.

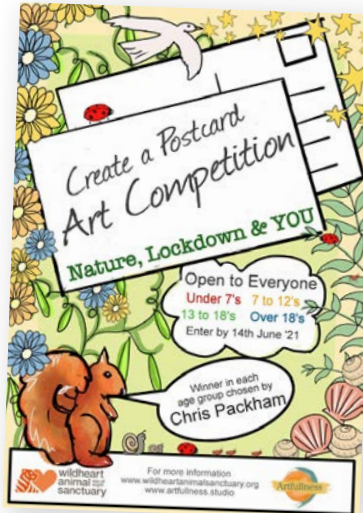
The competition will be split into four categories: Under 7s, 7-12s, 13-18s and over 18s.

The winner of each category will have their creation recreated on a postcard, which will be sold in the sanctuary's shop, all proceeds from which will be donated to a wildlife charity of the artist's choice.

In addition, The Wildheart Trust will be offering a year's membership to the sanctuary — so the artists can continue to be inspired by the animals — plus a range of art and craft prizes.

The competition runs until 14th June.

Visit wildheartanimal-sanctuary.org for more details.



Retired Teacher Writes Children's Book

A retired teacher has written her first children's book, which has also been illustrated by Island artist, Maria Ward.

"I took the advice of my late father — 'When you retire you need a purposeful project.' Within 48 hours of retiring I started writing my first children's book — Groovy Grandad," said Margaret Young.

"The story is about a young boy — Archie and his extraordinary Grandad. During the school holidays Archie stays with his Grandad in France, where he discovers he has an extraordinary talent too.

"The story sensitively addresses the issue of bullying



and the special relationship some children have with their grandparents. It has a sporting theme and explores the past of the little French town, Josselin, during World

War II.

The book was published on March 25th and is available online from Amazon, Blackwells, Foyles and Waterstones, as well as Waterstones in Newport and the children's section of Newport's Lord Louis Library.

Katy Wade at Little Victories built the book's accompanying website: groovygrandad.co.uk. The sequel **Groovy Grandad Comes to the Rescue** will be available in September.

WIN A COPY OF THE BOOK!

Just email us at win@iwbeacon.com by 30th June

THE ISLAND'S FAVOURITE...
isle of wight radio



'Topping in the Morning'
with Paul, Jamie and Hayley
every weekday from 6am

FM107 & 102
For the latest breaking Island news
iwradio.co.uk

The Island's Favourites

FACEBOOK
[isleofwightradio](https://www.facebook.com/isleofwightradio)
TWITTER
[@iwightradio](https://twitter.com/iwightradio)
INSTAGRAM
[@iwightradio](https://www.instagram.com/iwightradio)

Funeral Plans from William Hall Independent Funeral Directors

Planning ahead for peace of mind

A funeral plan provides peace of mind for you and those you care about. You make the arrangements in advance, specify your wishes and take care of the costs. We recommend funeral plans from Golden Charter, the UK's largest independent plan provider. With a Golden Charter plan you'll benefit from:

- Paying at today's prices for a service you may not require for many years
- A guarantee of nothing more to pay for our services
- A choice of a range of plans — with the option to personalise your own
- The reassurance that your wishes will be carried out, sparing your loved ones uncertainty and distress

Taking out a funeral plan is one of the most thoughtful decisions you could make.

To find out more about Golden Charter funeral plans from William Hall, please return the coupon below, phone us, or call in. REF: B 52

Mr/Mrs/Ms: _____ Initial: _____ Surname: _____

Address: _____

Tel no: _____

Send to: William Hall Independent Funeral Directors, Sunnybrow Winford Road, Newchurch, Isle of Wight PO36 0JX **Tel. 01983 868688**

FPA
FUNERAL
PLANNING
AUTHORITY
REGISTERED

Golden Charter
Funeral Plans

£150 of M&S Vouchers

Awarded to every new Golden Charter Funeral Plan taken out between 1st June to the 30th June 2021 with William Hall Independent Funeral Directors, Sunnybrow, Winford Road, Newchurch PO36 0JX. www.williamhallfuneraldirectors.com

REGULAR DRINK AND A SLICE OF CAKE JUST £3.95 WITH THIS VOUCHER VALID UNTIL 31.07.21



THE SUGAR LOAF COFFEE HOUSE

Friendly café serving home made cakes, all day breakfasts, sandwiches, baguettes, paninis and jacket potatoes. Children's menu also available.

Sugar Loaf Coffee House, Avenue Road, Freshwater PO40 9UT Tel: 01983 753303 Open Monday to Saturday

Advertise with us from as little as £38 per month.

Call 01983 433112



VENTNOR MOBILITY CENTRE



Regain your independence...

Agents for scooters, rise/recline chairs, stairlifts and all available mobility aids

FREE HOME SURVEY - We also Buy and Sell - Can't come to us, we'll come to you!

Unit 4, Old Station Road, Off Mitchell Avenue, Old Station / Tunnel, Ventnor PO38 1DX
Tel: 01983 855545

PRE-BOOKED APPOINTMENTS ONLY TO AVOID DISAPPOINTMENT

Celebrate Your Loved One at a Time and Place of Your Choice

'Isle of Wight Direct Cremation' was set up by the Weaver family who have been independent funeral directors for nearly 200 years and are proud to be the longest running undertakers on the Isle of Wight.

Over the years they have been asked to carry out simple, direct cremations by families whose wishes are that there is no funeral service before the cremation or, that the service is unattended with no minister and unattended by family or friends.

Since then, demand has grown for this type of service so they set up a dedicated service here on the Isle of Wight called 'Isle of Wight Direct Cremation'. Unlike mainland providers they are here to meet you in person to carry out your instructions and can return the ashes to you by hand.

In a nutshell, a direct cremation service for the Isle of Wight by an Isle of Wight independent funeral directors.

A direct cremation separates the celebration of life from the cremation. The cremation takes place without anyone present allowing you and your family the freedom to celebrate your loved one

at a time, place and venue of your choice.

They carry out this service in the same dignified, professional way as they would do for any funeral that they undertake. The simple nature of a direct cremation is reflected in the price.

With their extensive experience and distinctive personal, caring service, they are passionate about supporting families when they need them most.

They are the only funeral directors based on the Isle of Wight dedicated to this style of service. isleofwightdirectcremation.co.uk

Isle of Wight Direct Cremation also offer Golden Charter pre-paid funeral plans which provides people a way of planning ahead by making arrangements and paying for the cremation in advance. A pre-paid funeral plan offers total security and allows you to pay the cost at today's prices thus avoiding rising cremation costs. It also gives peace of mind and avoids any unnecessary stress on loved ones left behind.



Pre-paid funeral plans

If it means everything to have your favourite song played, white lilies and a release of doves, have them. It's your funeral.

Our pre-paid, inflation-proof funeral plans guarantee the way you want to be remembered and protect your loved ones from unnecessary burden and costs.

Drop in to see us today, visit us at funeralcare.co.uk or call us on 0800 243 380

£100 OFF

our pre-paid funeral plans*

Enter BEA1OW21 at: funeralcare.co.uk/funeralplans or take this coupon along to your local funeralcare home.

*Terms & Conditions: The voucher may only be redeemed against eligible Southern Co-op funeral plans costing £3,000 or more and will be deducted off the cost at time of sale. The voucher has no cash value and cannot be used in conjunction with any other discount, offer or promotion. For full terms and conditions visit: funeralcare.co.uk/funeralplans/terms, request a copy from any Southern Co-op funeralcare home or by calling 0800 008 6878. This voucher is valid until 31/12/2021.

Funeral homes in:

- East Cowes
- Newport
- Freshwater
- Ryde
- Lake
- Shanklin

The **co-operative** funeralcare

— | LEGAL & FINANCIAL | —

Planning For Your Holidays

It seems that there might be some light at the end of the tunnel with the planned easing of the restrictions (keeping our fingers crossed!) and it seems that holidaying abroad again might be on the horizon for some of us.

We often find that people begin thinking about their Wills and their estate around this time of the year as they make plans for the worst case 'what if scenarios' of travelling to and being in different countries.

What is the worst that can happen if I don't have a Will?

The intestacy rules dictate who inherits if you have not made a Will; in lots of cases these rules go against what an individual might want to happen on their death. Making a Will allows you to choose:

- Who will administer your estate
- Who will look after your children in the event that something happens to you before they reach 18

- Who will inherit your assets and how you wish this to be achieved

Your Will may also allow you to protect your wealth from taxation or residential care fees and secure it for future generations.

Even if you have your Wills in place, it is important to check that it is up to date and still reflects your wishes. It would be unfortunate for your Will to be out of date and to fail to reflect your current wishes and circumstances.

Things that may trigger Wills to be amended can include:

- The birth of more children, grandchildren or children that have been adopted into the family

- Marriages, divorces or separation of those closest to you which means you might have to consider other options
- Change in relationships between you and your beneficiaries (falling out or divorce from your spouse)
- Deterioration of the physical or mental health of the beneficiaries, executors or guardians
- Death of a beneficiary, executor or guardian
- Increase in the value of the estate so that you may wish to consider adding more beneficiaries
- Decrease in the value of your estate so that you may wish to remove beneficiaries

Although your personal circumstances may not have changed, the law changes constantly and so a Will prepared some years back may need to be revised. Tax planning Wills may no longer be suitable and it can cost several thousands of pounds to overcome this if you die without updating your Wills. A new Will or a Will update is much cheaper!

Nurses, Carers & Support Workers

Choose your own shifts in care homes across the Isle of Wight.

Join Florence Flex to:

- Choose from 100s of shifts
- Pick shifts in one click
- Submit timesheets online
- Get paid quickly and easily
- Access free training
- Get a free DBS check
- Join a 50,000+ community
- Be fully supported by our team



Take control today.

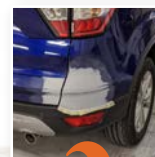
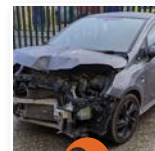
Sign up free at www.florence.co.uk

Call: 020 3911 2555 Email: hello@florence.co.uk



If you've damaged your vehicle, or someone else has, did you know you **DON'T** have to use the repairer your insurance company suggests?

You could save money and they can help towards the excess too.



SW Vehicle Body Repair - Giving you choice

Call 866 413 today

Would you like an honest,
reliable and **AFFORDABLE**
police checked*
cleaner to clean your home?

Typically

£13.50 per hour inc.

Then contact us at



TIME FOR YOU™
DOMESTIC CLEANING

As Featured on BBC 2's Working Lunch, Ch4's 'House Swap' & preferred cleaning supplier to CH5's Cowboy Builders!

Telephone:

01983 623 123

iow@timeforyou.co.uk

www.timeforyou.co.uk/iow

*police checked cleaner upon request



*"We don't just sell hearing aids,
we provide total hearing care"*

Wight Sound Hearing

Registered Healthcare Professional
Colin Stockdale RHAD MSHAA AIHHP (Executive Member)

12 High Street, Shanklin PO37 6LB
Tel 01983 86 59 59

All Hearing Tests and Consultations are FREE

Latest Digital Testing & Fitting Equipment

Video Otoscope (see inside your own ear)

Try Before You Buy OR RENT a Digital
Hearing Aid (from £1 A DAY)

Free Home Visits
EVERY Brand of Hearing Aid
Available in the UK
Easy Payment Plans



Affordable Direct Cremations

Located on the Isle of Wight for the Isle of Wight

Brought to you from an Independent Funeral Directors with nearly 200 years of experience looking after families on the Island. We are the only funeral directors based on the Isle of Wight dedicated to this style of service at isleofwightdirectcremation.co.uk or call us on **01983 632598**



How does it work?

Direct cremation is an affordable alternative to a traditional funeral. It separates the cremation from the funeral ceremony. The cremation takes place without any service at the crematorium, and without mourners or a minister present.

What's the difference between a direct cremation and a traditional funeral?

A direct cremation separates the celebration of life from the cremation. The cremation takes place without anyone present allowing you and your family the freedom to celebrate your loved one at a time, place and venue of your choice. We carry out this service in the same dignified, professional way as we would do for any funeral that we undertake. The simple nature of a direct cremation is reflected in the price.

How much does a direct cremation cost?

We have two options to choose from:-

- Our 'Island Way' is £1,695.00, this is for a direct cremation at the Isle of Wight Crematorium
- Our 'Wessex Way' is £1,495.00, this is for a direct cremation at a mainland crematorium.

We offer this option for families that would like to take advantage of the savings that mainland crematoriums offer. We then pass this saving onto families. Both these options are all inclusive with no hidden additional costs; unlike mainland providers who charge additionally for ferry fares.

Can I get help with the cremation costs?

Yes if you are in receipt of benefits you may be entitled to a payment of up to £1,000 from the Department of Work & Pensions, so we advise contacting them to enquire.

Why Choose it?

- Less expensive than a traditional funeral
- It allows you the freedom & flexibility to focus on celebrating a life well lived.
- Freed up from the cremation it opens up the options for venues and times, even weekends, to hold your celebration.
- A simple and easy to arrange process

What's the difference between Isle of Wight Direct Cremation and a mainland provider?

- To start with we are based here on the Island. We can promptly take your loved one into our care without the need for travelling over by ferry involving lengthy and distressing delays.
- We usually meet you face to face either at our island offices or in the comfort of your own home, but due to current restrictions of social distancing we can make all arrangements on the telephone
- Mainland providers courier the ashes back to you whereas we provide a more personal service by returning them to you at home, or you can come into either our Bembridge or East Cowes office.
- We are locals too and understand the local community.

Who is Isle of Wight Direct Cremation?

We are independent family funeral directors based here on the Isle of Wight. We are the Isle of Wight's longest running established undertakers.

We have offices based in Bembridge & East Cowes so you can come in, or call us on **632598** or even visit us on line at www.isleofwightdirectcremation.co.uk. With over 190 years of experience we are on hand to make a difficult time easier.

Do you offer pre paid direct cremation funeral plans?

We get asked this question a lot and the answer is, Yes! Often people like to get their affairs in order to avoid expense being left to their loved ones at a distressing time. Our plan holders often tell us that this can be a big weight off their mind.

A pre paid funeral plan offers total security. There are flexible payment options too. We use Golden Charter pre paid funeral plans as they allow you to pay at today's prices and avoid rising costs.

Who is Golden Charter?

Golden Charter is the UK's market leader for providing pre paid funeral plans to Independent Funeral Directors since 1989. Your funds are safe and are placed into The Golden Charter Trust. The Trust will pay out for every plan that pays into it.



located on the Isle of Wight for the Isle of Wight

Affordable Direct Cremation - All inclusive, no hidden costs
Separate the Cremation from the Celebration

www.isleofwightdirectcremation.co.uk // info@isleofwightdirectcremation.co.uk

Direct Cremations
starting from **£1,495.00**

Pre paid funeral
plans from **£1,750.00**

Call us on:
01983 632598



JOSH KERLEY
TREE SERVICES

✓ All aspects of tree work undertaken
✓ NPTC Qualified and fully insured
FREE NO OBLIGATION QUOTES

TEL: 07875021682
Email: info@joshkerleytreeservices.co.uk
www.joshkerleytreeservices.co.uk

ACER
RECLAMATION

WANTED: Red & Yellow Bricks,
Floorboards, Flagstone, Welsh Slate,
Chimney Pots & Stained Glass.

Call: 01983 565761
or 07973 745428
www.acerreclaimed.co.uk

STAG LANE MOTORS
Stag Lane, Newport
522443 / 525783

Special Offer MOT £39
(Class 4 cars & motorhomes only)

**SERVICING & REPAIRS TO
ALL VEHICLES (inc. HGV)**

**24 hr Breakdown
& Recovery**

Motorbikes MOT £25

YOUNG
PLUMBING

PLUMBING & HEATING SERVICES

Tel: 01983 339671
Mb: 07967 225030

www.YoungPlumbing.co.uk

STUDIOPHASE

The Isle of Wight's local TV experts
Call 404406 studiophase.com

Why choose us?
• CAI approved • Friendly, reliable engineers
• We have over 30 years of local knowledge

Freeview
freesat
sky cai

**The Island's Premier
Double Glazing Company**

Windows, doors,
conservatories, porches,
guardian roofs
and much more

10 year insurance
backed guarantees

Extensive range of
colours and styles

whitewindows.co.uk

WHITE
WINDOWS Ltd.

Call TODAY for your free estimate **01983 523552**

FENSA
Registered Company
TRUST
MARK

for those jobs outdoors

MAKITA • JANSSEN • KUBOTA • NILFISK • HAYTER • TORO • CUB CADET AND MANY MORE

STUBBINGS BROS
meeting your machinery needs

call us on **551443**
Chale Green, IW • jobsoutdoors.co.uk

Expert advice
No better price

By Flo Whitaker

Monastic gardens were the pharmacies and laboratories of the medieval world. With a mostly illiterate population, the first herbal books were written by monks. A herbal publication was a complete instruction manual — a combined gardening book, cookery book and pharmacy journal. Drawings and descriptions of plants were set alongside notes on propagation, cultivation, medicinal uses and recipes for cures, ('prescription' comes from the Latin word 'recipe'). It had long been realised that different plants required different habitats. That's why the invention of sub-divided flower beds was so clever and it remains a flexible, practical system for the modern gardener wishing to grow a wide variety of plants in a limited space. For instance, moisture-retaining leaf mould can be incorporated into one bed, while free-draining grit can be dug into the neighbouring compartment.

Herb gardens can be as fancy, (expensive!) or as simple as you like. Edged with wood, brick or stone, the beds are commonly laid out as a series of squares or rectangles; sometimes sub-divided diagonally to create triangular shapes. Whatever style you choose, ensure the beds are level, otherwise soil/water will forever wash downhill and make a horrible



HERB GARDENS

Herb gardens are beautiful and practical — and you don't have to break the bank to make one.

mess. Herb beds traditionally had barriers of brick or slate sunk 30 cms below the soil surface to stop roots migrating into surrounding areas, but this isn't necessary, so long as you keep invasive herbs such as mint, lemon balm and

comfrey in pots to curb their tuggish tendencies.

Some herbs are annuals; others die back in autumn, so think about how the space will look out of season. Terracotta edging or gravelled paths will embellish the scene, even in the middle of winter. Long-lived and fully hardy, bay can be clipped into an eye-catching topiary shape.

A herb garden in a container is possible, providing you choose plants that are not over-vigorous and enjoy similar conditions. Try adding some salad-type crops too — a trailing tomato plant will thrive in a sunny window box planted with basil and a colourful thyme - there are many thyme varieties to choose from. Lettuces, chives, dill, coriander and parsley will happily grow in pots in light shade — cooler temperatures makes them slower to run to seed. Strawberry pots are brilliant for herbs - position one by your kitchen door, perhaps? Plant the bottom tiers with shade/damp lovers; try violas, (for edible flowers) or different types of mint. Use the upper, drier levels for sun worshippers such as oregano

and marjoram.

If you have a boring expanse of paving, lift alternate slabs and make a 'chessboard' of planting pockets. In a sunny situation, drought-tolerant rosemary, lavender, thyme and sage will revel in impoverished free-draining soil and the heat radiated by the surrounding masonry will enhance their fragrance.

Whether grown for culinary purposes or just ornamental effect, herbs should feature in every garden. In the 1980s, I was fortunate to travel through Egypt. Stopping in a remote village, my travelling companions and I gratefully sat in the shade cast by the derelict walls of a once-substantial building. The house was uninhabitable, but someone had made a tiny garden in the ruins. An area of beaten earth no more than two metres square was neatly bordered by an assortment of old food tins and plastic containers. Herbs and salads of various types were growing out of these repurposed flowerpots. Positioned at the centre was a water-filled dish. Right on cue, a small bird appeared for a refreshing drink. That's the beauty of gardening. You can create a little bit of paradise anywhere. ☺

For culinary purposes or just ornamental effect, herbs should feature in every garden





**MILLENNIUM
WINDOWS LTD**

UPVC Doors & Windows, Conservatories and Fascias
& Gutter Installations on the Isle of Wight.

CALL US ON **01983 810 888**

millenniumwindowsiow.co.uk facebook.com/millwindows

Island Repointing



Natural Stone & Brick

Masonry Waterproofing & Brick Replacement

Damp Proof Course Installation & Cavity Clearance

Vacuum Grinding

Islandwide Coverage

Tel: 01983 531461 or 07715 397896

Beacon CONTACT US

CALL US
01983 522123

VISIT US
iwbeacon.com

FACEBOOK
[iwbeacon](https://facebook.com/iwbeacon)

INSTAGRAM
[@beaconiow](https://instagram.com/beaconiow)

TWITTER
[@iwbeaconmag](https://twitter.com/iwbeaconmag)

EMAIL
hello@iwbeacon.com

Mark Carter

Oil and Gas Engineer

Worcester Bosch Accredited Installer
Serving the West Wight and Cowes area

Tel: 619111 Mobile: 07771 557769



Gas Safe

Registered 28450

Oftec Oil

Registered C12814



- Boilers Installed, Serviced & Repaired ✓
- Heating system repairs and upgrades ✓
- Landlord Gas Certificates issued ✓
- Agas & Rayburn Serviced ✓
- Swimming Pool Boiler Services ✓
- Fires, Cookers, Hobs & Ranges installed ✓
- Power Flushes and system Cleanses ✓
- Pre purchase House Inspection ✓
- If it uses gas we can fix or replace it ✓
- Natural Gas & LPG & oil ✓

The Island's
**CARPET & FLOORING
SUPERSTORE**



OPEN 7 DAYS A WEEK

MON - FRI 9AM - 6PM

SAT 9AM - 5PM

SUN 10AM - 4PM

01983 533150

12 Hurstake Road, Riverway Industrial
Estate, Newport, Isle of Wight,
PO30 5UU (next to Jollyes)

**NO DEPOSIT
INTEREST FREE
CREDIT**

Subject to status on orders over £495*

D&S Carpets are authorised and regulated by the Financial Conduct Authority. We are a credit broker not a lender - credit is subject to status and affordability, and is provided by Hitachi Capital (UK) PLC. Terms & Conditions Apply.

*Excludes fitting charges



www.dscarpets.co.uk

Rugs

Luxury
Vinyl Tiles

Wood &
Natural
Flooring

Vinyls

Carpets



Spend More Time Outdoors

We all know the ups and downs of the beautiful British weather. But, with a little help from White Windows Ltd, the Island's premier double glazing company, you don't need to run indoors and waste that BBQ or try to cover yourself from the sun. No, not anymore.

White Windows offers many cost-effective options to help. One of those is a stylish veranda that can be glazed with a choice of 6mm toughened glass or 6mm solid polycarbonate making it an all-year round affair.

With elegant posts and optional glass roofing, their products offer you a deluxe canopy or veranda at an affordable price, you would be incredibly surprised. They use a revolutionary and elegant system that's quick and easy to install.

By featuring the option of glass roofing, White Windows offer improved acoustic properties – reducing the noise of rain drops during a downpour; these glass panels also provide a sparkling finish which is easy to maintain, particularly if you choose the self-cleaning glass. The verandas, carports and canopies are the perfect solution for domestic gardens and

homes providing effective and stylish cover from the weather for alfresco dining and garden parties.

Mathew Foreman, Managing Director of White Windows Ltd says of their Verandas: "Having a span of up to 3.5m from a supporting wall, as well as an unlimited length, our customers have a solution that has been adapted to suit many needs. All of our stunning verandas, carports and canopies come with a full 10 year guarantee and a 25 year life expectancy, which really does make this an investment that all of our customers will be able to enjoy for many years to come. We love being able to help our customers make more use of their outside space, really making their gardens usable in all weathers."

Aside from carports, canopies and verandas, White Windows Ltd specialises in composite, bifold and triple-track doors. Flush sash, vertical sliding and casement windows, as well as structures such as conservatories, orangeries, extensions and Guardian Warm Roofs.

WHITE WINDOWS

Call 01983 523552 for a free quote or go online, at www.whitewindows.co.uk

Some of our clients said...

“

"The team who carried out my installation were absolutely superb from start to finish. They were painstaking, incredibly tidy and neat when working and left the site in immaculate condition. There is nothing on which could be faulted. They are a credit to White Windows."

"The windows and door were beautifully made and installed by very neat and considerate workmen. Thank you very much."

"Another excellent job. We have now had patio doors, a back door, window and now an internal door fitted by Gavin and Tom. Once again, very pleased with everything."

"Gavin was very respectful to my property and carried out his work in a professional and prompt manner."

"100% satisfied. White Windows really do provide a first class service, top class products and great staff."

"We are very pleased with the whole job and especially the manner in which the fitters carried out their work. Also very impressed with their ability to adapt to the changing demands of the job."

”





Cherry Tree
shutters
Changing your view

**20%
SALE
NOW
ON!**

01983 640174

www.cherrytreesshutters.co.uk

Providing interior plantation shutters to cover any window style or colour including; Square, Rectangle, Circular, Arched, Bays and Patio Doors.



*Terms & Conditions Apply

Checkatrade.com

0%

**FINANCE
AVAILABLE**

BARNEY'S TYRES

Tyres at great prices!

**BUDGET, MEDIUM & BRANDED
RANGE TYRES FOR CARS,
VANS, 4X4'S & TRAILERS
ALL AVAILABLE AT LOW PRICES!**



- PUNCTURES & WHEEL BALANCING
- OPEN 8-5.30 MON-FRI & 8-1 SAT
- NO NEED TO BOOK, JUST TURN UP!
- ACCEPT CASH & CARD PAYMENTS
- UNIT 4, ALBANY CENTRE, FOREST ROAD, NEWPORT, ISLE OF WIGHT PO30 5NB



**WE CAN FIT YOUR TYRES
AT WORK OR HOME!**



Mobile fitting service - call & book a convenient time for you

T: 01983 529061

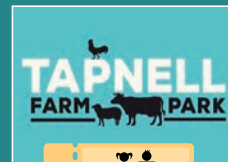
M: 07788 817511

WIN! Can you spot the differences?



THIS MONTH'S PRIZES...

T&Cs apply



2 x summer season passes for Tapnell Farm Park
Tel: 01983 758722
www.tapnellfarm.com/play



The Vine St Helens
Tel: 01983 872337



Luxury Breakfast in Bed from Grace's Bakery
Tel: 01983 632231
www.gracesbakery.uk



Pair of Saturday Shopper Tickets
Courtesy of Solent and Wightline Cruises
Tel: (01983) 564602
www.solentcruises.co.uk

PRIZE PREFERENCE
(CHOOSE ONE ONLY)

1 2 3 4

NAME:

TEL:

ADDRESS:

POSTCODE:

E-MAIL:

☐ I am happy to be contacted by the sponsors for marketing purposes

☐ I would like to receive Beacon Magazine's weekly email newsletter with more competitions

Closing date - 30th JUNE 2021

Send your entries to: **IW Beacon Competition, 8-10 Dodnor Park, Newport, Isle of Wight, PO30 5XE**

When sending your entry to us you **MUST** ensure that you use the correct postage. Terms and conditions available on request.

Prizes must be claimed within 30 days of the draw date. Previous winners can be found on our Facebook and Twitter pages.

Winners will be contacted by phone.

Did you know...

You can take a photo on your phone and email your entry to win@iwbeacon.com.





FAIRLEE SERVICE STATION



MOT

CARS

£30

£45

CLASS 7

3500kg GW including
Hi-Tops, Long Wheel
Base, Tipper & Lutons



Live Booking Visit:

fairleeservicestation.com


online service and MOT booking now available

Call:



01983 525410

service reception

 Fairlee Service Station | Fairlee Rd | Newport | Isle of Wight | PO30 2EJ