

EAST AND SOUTH WIGHT

Pick up your FREE copy

# Beacon

February/March 2021

ISLAND STORY  
MEMORIES OF  
ISLAND LINE

HISTORY  
SHANKLIN  
THEATRE IN  
THE SUMMER  
OF '56

FOOD & DRINK  
CORNBREAD  
RECIPE  
PLUS... WIN A  
COOKBOOK



## Hope Springs



 Walk the Wight  
with Mountbatten

REGISTRATIONS NOW OPEN



**Ryde Village**  
Independent Island Living

Over 55, extra care shared ownership apartments

Prices from **£48,750**  
with a monthly rent of £335.16  
if you were to purchase  
a 25% share  
(service charges apply)



\*Photos depict communal facilities

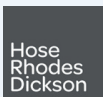
## LAST FEW REMAINING!

All residents can be supported by the Wellbeing Team based at Kleo Friend Apartments who are there to help everyone feel settled, supported and safe; this unique Wellbeing service can respond to your needs 24hrs a day on an unplanned care basis, enabling you to live independently in your own home.

To feel part of a community, there is access to activities every day such as:

- **Minibus outings**
- **Scheme shop**
- **Hairdressers**
- **Beauty treatment room**
- **Reception desk 7 days a week**
- **Laundry room**
- **Cinema/ Fitness room**
- **Communal lounge/Dining room**

All apartments are built and equipped with emergency pull cord which connects you to **24 hours a day staff on site** who can respond in a serious emergency for your peace of mind.



To arrange a viewing of the show room for shared ownership, or to speak with someone regarding renting, please call **0808 1699788**

[www.rydevillage.com](http://www.rydevillage.com)



Welcome from the  
**EDITOR**

Lighter days are coming. And hopefully so too, is the return of life as we once knew it. I'm looking forward to seeing loved ones in the flesh, visiting the Island's many fantastic eateries and leisure facilities and the return of grassroots clubs and sports — something which my children have missed very much.

It's been a very hard year for many, in so many different ways, but I've noticed the mood has begun to shift. People are feeling much more positive about the future, with vaccines now being widely distributed and hope on the horizon.

We've filled this edition of Beacon with your usual mix of history, news, recipes, gardening and interviews, plus a sprinkling of joy. Something which we all agree we really need, as we emerge from a cold winter.

*Amy Shephard*

Editor amy.shephard@iwbeacon.com



9

17

18

- 7 Walking the Island: St George's Down
- 9 When John Hannam did the Corrie tour
- 11 Spoil Mum this Mother's Day
- 13 Recipe: Pine Nut Cornbread
- 14 Live and Local: With David Francis
- 15 Book review: Away with the Penguins
- 17 History: Shanklin Theatre in the Summer of '56
- 18-19 Island Story: Memories of Island Line
- 22-28 News from your area
- 31 Gardens: Feed the Birds
- 35 Spot the Difference Competition

31



**Beacon**  
MAGAZINE

IW Beacon Media Centre, 8-10 Dodnor Park, Newport, PO30 5XE [iwbeacon.com](http://iwbeacon.com)

**CALL US**  
OFFICE  
01983 522123  
SALES  
01983 433112

**FACEBOOK**  
iwbeacon  
**INSTAGRAM**  
@beaconiow

**TWITTER**  
@iwbeaconmag  
**EMAIL**  
hello@iwbeacon.com



WE PROVIDE A RANGE OF SERVICES TO SUPPORT YOU IN YOUR OWN HOME.

IF YOU ARE FINDING SOME EVERYDAY CHORES DIFFICULT, FROM SHOPPING TO SHOWERING OR COOKING TO CLEANING, THEN WE COULD BE THE ANSWER.

**We are a family run home care company.**

Charmian, our Care Manager, has over 25 years' experience of working in care and believes that the Care Industry has become so impersonal and hurried, that the needs of the human beings at the centre are sometimes forgotten.

We want our clients to feel safe and happy with the decision they have made about having care and support; and we want our care staff to be happy in their work. We offer a full consultation and assessment service so we can tailor our care packages to each individual, according to their specific needs. If you feel that we have the right values to support you or a member of your family, then please give us a call on **01983 530458**. We will be happy to listen and help you come to a decision about the best way forward.

For more information call us on **01983 530458** or visit our website

**WWW.CHARMES-CARE.CO.UK**

Care services across the Isle of Wight

# 6 Reasons to move to Beatrice Court in 2021

Start a new year in a new warmer home, surrounded by friends!

**FROM JUST £71,500**

## 1. It's more affordable than you think

The costs of running your new well-equipped apartment are likely to be much lower, especially with no gas or water bills to worry about & management charges as low as £36 per week.

## 2. Safety, emergency support and peace of mind

Beatrice Court is a safe and secure place to live, with the ability to obtain help whenever you need it.

## 3. New opportunities to socialise

You are likely to meet all kinds of like-minded people who share your interests, you'll never be short of company again!

## 4. No more tricky home maintenance

You may love your current house, but there's a lot of work that goes into maintaining it, from trimming the lawn to fixing leaks. You could have more time to do what you like.

## 5. Holding on to your independence

As a Home Owner at Beatrice Court, you will remain responsible for your home, you will be able to come and go as you please, as well as entertain guests on prolonged visits if you wish.

## 6. It's time to move on. Is it worth waiting?

It can be tempting to stay where you are until you are forced to make a decision about moving. Why wait, moving home once you actually need to can make the process more difficult or stressful.



**HURRY LAST CHANCE TO BUY! NEW APARTMENTS AVAILABLE FROM JUST £71,500**



Call Philip, Ellen or Emily now at Hose Rhodes Dickson 01983 862147

[www.beatricecourt.co.uk](http://www.beatricecourt.co.uk)

Brought to you by  
**CaptivaHomes**



**FRONTROW**  
**GROUNDWORKS**  
**ISLANDWIDE**

◆ **FULLY INSURED**  
◆ **28 YRS EXPERIENCE**  
◆ **RELIABLE!**

# SPECIALISTS IN FENCING

**Removed - Repaired - Replaced**

• All types of fencing undertaken • Quality materials used • FREE quotes



**PLUS**

• Landscaping • Turfing • Driveways • Pathways • Decking • Drainage • Guttering  
• Tree & Hedge maintenance & removals • Footings • Garden walls

**Call Andy on 07817 979501 or 01983 863348 Email: [frgworks@icloud.com](mailto:frgworks@icloud.com)**

# Do Something Amazing in 2021 and **Walk the Wight** with **Mountbatten**

**The Island's biggest fundraising event is back for 2021.**

This unique and world famous walk annually sees thousands of people walking across the beautiful Isle of Wight countryside to raise money in support of Mountbatten. Passing through scenic countryside and picturesque villages, past famous landmarks and taking in stunning seascapes, Walk the Wight really shows off the Island in all its glory.

With a choice of walks and distances, people of all ages and abilities can take part, making this an event for everyone so get those walking boots on and take on the challenge!

Since it started back in 1991, Walk the Wight has become a staple of the Isle of Wight community's calendar and has raised over £5million to help ensure that no-one dies alone and that loved ones who are left behind will have the bereavement support to help



them cope with their feelings and emotions once someone has died.

Due to the Covid restrictions in 2020, Mountbatten asked you to get creative and Walk the Wight Your Way. Whilst unable to take part in the traditional walk, people came up with some brilliant ways to cover the miles they would have walked on the day.

You took to your running and rowing machines, back gardens and trampolines, covering the equivalent distance of the 26 mile route. Mountbatten was amazed at the level of support shown and humbled by the efforts people went to to raise over £200,000 to ensure Mountbatten can continue to do what it does. To see the community coming together in such a way was a display of positivity in such a difficult year.

This year, Mountbatten is confident that the walk will be able to go ahead on May 9th, while following all updated government guidelines. However, Walk the Wight Your Way is back by popular demand making this year's Walk the Wight more inclusive than ever before. With over 500 miles of footpaths on the Island, why not get out there, Walk the Wight Your Way, and discover somewhere new while knowing you're making a real difference to Island people.



## Why will you Walk the Wight in 2021?

Some people walk to remember a loved one, while others simply want to take on the personal challenge of walking a marathon. So, whether you take part in Walk the Wight Your Way from April 1st, or join Mountbatten on the day on May 9th, the team love hearing your stories of why you are Walking the Wight and seeing pictures of your journey. Share them with the *Walk the Wight Your Way* Facebook community or share them on Twitter using **#iremember**.



Sign up online today to make sure you are a part of this amazing event. **[mountbatten.org.uk](https://mountbatten.org.uk)**

# WHAT A DIFFERENCE A DAY MAKES

"It's the best home improvement we have ever made. Our conservatory is now our dining room in the garden."

Mike Millis,  
Middleton On Sea

**SUBSIDIES  
AVAILABLE**

\*Quote Ref  
Bea0321

LATER THAT DAY



BEFORE

There are many reasons to change your conservatory roof with Green Space UK

## INSTALLED IN 1 DAY

"What a difference a day makes as the saying goes, and yes, that's all it took to install."

Mr & Mrs Barber, Wells

## WARMER IN WINTER

"There is no doubt that the conservatory is much warmer than previously, and no, the room is not darker either!"

David Birch, Chichester

## USABLE ALL YEAR ROUND

"The conservatory is now used throughout all seasons of the year and is far more comfortable to sit in whatever the weather outside."

Mr & Mrs Gibson, Portishead

## MOULD & CONDENSATION

"This is the best thing we have done in this house. Used to run with condensation and now zero."

Karen Thomas, Chippenham

## COOLER IN SUMMER

"You could have fried an egg on the table in there in the summer, I now look upon the conservatory as a new room. It is quiet, restful and cosy."

Carol Doyle, Surrey

## REDUCES ENERGY BILLS

"I've already turned the underfloor heating down. Lovely job guys, thank you!"

Anne Bird, Bristol

## QUIETER IN BAD WEATHER

"For the first time in 10 years we do not have to close the door to the conservatory when it rains, as the noise is minimal and before I found it difficult to hear the TV over the loudness of the rain on the old roof."

Mr & Mrs Bailey-Webb, Warsash

## CONTACT-FREE

We can offer **contact-free** installations, and perform these in less than a day!

?



Get a price for your conservatory roof

**0800 08 03 202**

[www.greenspaceconservatories.co.uk](http://www.greenspaceconservatories.co.uk)

Checkatrade.com

GRAND  
DESIGNS  
LIVE

ideal  
HOME SHOW



\*Finance subject to status, T&C's apply. Subsidies are limited by area and not guaranteed. Putting off your enquiry could reduce the potential subsidy available to you

# Walking the Island

ST GEORGE'S DOWN



Shide old quarry land from St George's Down

By Amy Shephard

Newport may be the Island's county town, but there's plenty of off-road walks waiting to be discovered just on the outskirts.

During the latest lockdown, I have been exploring these more than ever before, since the Government advised we only exercise within our local area. And boy am I glad I did — I've found so many hidden gems right on my doorstep.

This challenging walk takes you up on to St George's Down, giving you incredible views over Newport, Blackwater and beyond. We even spotted the Spinnaker Tower! Be prepared for a steep

incline while you walk up on to the Downs — and don't forget your wellies!

Start on the bridge next to Matalan car park and join the pathway which leads along the River Medina. Follow the river until you get to Shide Trees. Carefully cross the road near

National Tyres, heading towards Burnt House Lane.

Take a right once on Burnt House Lane and head towards St George's Lane. Follow this steep hill all the way to the top, stopping at the entrance to the golf course to enjoy the beautiful views towards Blackwater.

You'll see Portsmouth in the distance on the other side.

Head back down the road, this time taking a right towards Shide Chalk Pit at the first

opportunity. Follow this lane all the way to the top, where you'll come across an interesting old building (can anyone tell me what this is?) — and fantastic views over Newport town and beyond.

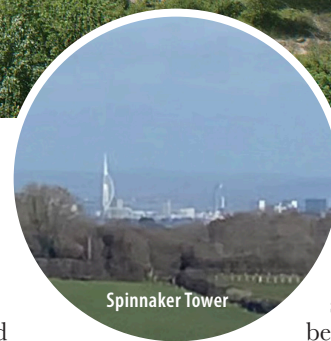
Venture down the hill on the other side, taking a right when the path forks and then a left when it joins the road. You'll see a woodland path on your right leading towards Pan Lane soon after. Take this turn, which comes out near the back

of Asda.

Cross the road and take a left (the old football stadium should be on your left)

across the field and back into woodland. Here we came across a makeshift campfire and a bridge, perfect for playing pooh sticks. My children were in their element.

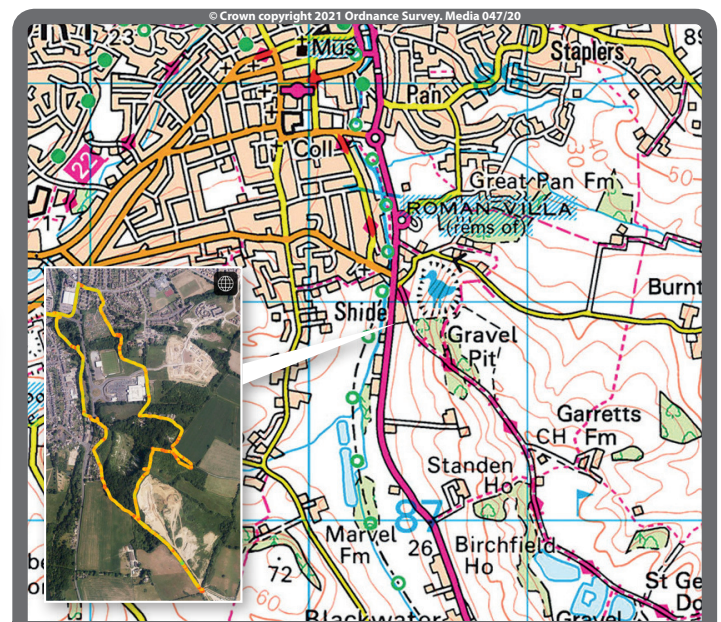
The path eventually comes out on Homemade. Take a left along Furrllongs and cross at the lights. You'll find yourself back in town where you started. ☺



Spinnaker Tower

*This challenging walk takes you up on to St George's Down, giving you incredible views over Newport, Blackwater and beyond*

Main image courtesy of Wikimedia Commons



Distance: 5km/3 miles  
Walk Time: 1.5 hours



Admiring the views



**MILLENNIUM  
WINDOWS LTD**

UPVC Doors & Windows, Conservatories and Fascias  
& Gutter Installations on the Isle of Wight.

CALL US ON **01983 810 888**

[millenniumwindowsiow.co.uk](http://millenniumwindowsiow.co.uk) [facebook.com/millwindows](https://facebook.com/millwindows)

## SOUTHERN CONSERVATORY VALETING



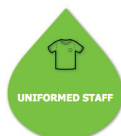
**Southern Conservatory Valeting**  
use professional products to clean inside and  
out, leaving your conservatory looking brand new



FIXED QUOTATION



APPROVED METHODS



UNIFORMED STAFF



QUALITY SERVICE

- Internal & External Conservatory Cleaning
- Premium Conservatory Valet
- Conservatory Blind Care
- Box Gutter Cleaning



"Providing A Trusted Conservatory Valeting Service Used by 100s of Customers..."



☎ **0800 689 4316**

[www.southernconservatoryvalet.co.uk](http://www.southernconservatoryvalet.co.uk)

@ southernconservatoryvalet@gmail.com



Finding Forever Families



**Is there space for a child in your life?**

**Talk to our friendly team about your adoption journey**

You can be a couple or single and 21+ years • LGBT+ • Have a family already • Disabled • Claiming Universal Credit • Renting, mortgage or shared ownership homeowner • Financial support available for children with complex needs

**0300 3000 011 • [adoptsouth.org.uk](http://adoptsouth.org.uk)**

The Regional Adoption Agency for:



Hampshire  
County Council



ISLE of  
WIGHT  
COUNCIL



Portsmouth  
CITY COUNCIL



SOUTHAMPTON  
CITY COUNCIL



When John Hannam did the...

## ◦ CORRIE TOUR ◦



**B**ack in 2001 I took an exciting 21 hour day trip to Weatherfield. I was expecting to undertake a couple of interviews with two of Coronation Street's lesser known characters. Thankfully, it didn't go to plan. Once the two interviews were completed and the press office girls had left, I was told to sit tight for a few minutes and see who might come in. Over the next hour, six of the most famous faces in Britain came in and were all eager to chat.

The opportunity to visit the Granada set in Manchester had come in early summer. My good friend, Vic Farrow, who had taken me to meet Cliff Richard a few years earlier, knew Peter Shaw, a first assistant director on Coronation Street. He contacted their press office and my two interviews were confirmed.

The day before my visit, Peter rang with the final details and asked if all was well for the trip. Somehow, he must have sensed a slight disappointment in my voice when he asked who was I going to interview. He assured me all would be well.

Being a true Islander, I don't like spending nights away from home. On the Wednesday morning I was up at 2.30am and then drove to Osborne Cottage, East Cowes, where my mother was a resident, parked in their car park and walked down the hill to catch the 3.30am ferry to Southampton. With time to spare, I then walked to Southampton Central to catch an early train to Oxford. There I caught a Manchester-bound train that was due to arrive at 10.20am - and it did. Was that a lucky omen?

The first person I saw was Kevin Kennedy, who played Curly Watts. He said a quick hello and kept on reading his lines, as he was on set in five minutes.

Peter had suggested we did the two interviews in the children's room, as there were none on set that day. When they were completed and the press girls had gone I was left in the room on my own for a while and browsed through my secret notes I had made a few days earlier, about the actors who played main characters. Just in case, of course.

Apparently, in the nearby green room, when the actors were told they could also each choose a record, as it was for my IW Radio chat show John Hannam Meets, they could barely wait to volunteer.

First in was Sean Wilson, who played Martin Platt. He'd been in the show for 17 years. At that time his character was enjoying a new romance with Sally. I also discovered that away from the Street he was a very successful trout angler.

The next through the door was Les Battersby, from that notorious family always in trouble. Bruce Jones was nothing like the guy he portrayed. The previous year he'd been down to Cowes to compete in the Round the Island race. I did tease him about singing I'm Not In Love to Janice, his gobby screen wife, in one particular episode.

Jimmy Harkishin, who played Dev Alahan, confessed to loving the old style crooners. His father had once told him he

would probably end up running a shop. Little did he expect it to be in Weatherfield and seen by 20 million people.

I did get rather excited when Helen Worth popped in, wearing her peach dressing gown. She was en route to a workout before filming. It was her 26th year in the soap. Her surprising record choice was Elgar's Cello Concerto.

Last in were the legendary Jack and Vera. Bill Tarmey and Liz Dawn were a joy to meet and also great friends off stage. Both were very grateful for their

success in Corrie. Bill had been a builder for ten years before becoming a club singer and then a television extra. Liz had been unhappy in a factory before selling light bulbs in Woolworths. Knowing I'd come up from the Island, she eagerly told me Newport-born singer

Craig Douglas was one of her favourite singers and had performed at her 60th birthday party.

A few months later Liz invited my late wife, Heather, and myself to her Breast Cancer Charity night at the Leeds Empire. There I got another 13 interviews, including the lovely Sue Nicholls, the one and only Audrey. She told me how much she loved visiting Godshill.

What time did I get back from my Weatherfield visit? The same day but with only an hour to spare. ☺

*"The lovely Sue Nicholls, the one and only Audrey, told me how much she loved visiting Godshill."*

Hear John chat about his many incredible celebrity interviews in An Audience With John Hannam. Find out more on page 12.



Every used car is covered by the **Esplanade Approved** Used charter, where customer peace of mind is at its heart. When buying from Esplanade every used car comes with all of these unique benefits:

- ✔ **Comprehensive multi-Point Workshop Check**
- ✔ **2 Months Unlimited Mileage Warranty**
- ✔ **All service requirements met** - no need for another for at least 6 months
- ✔ **12 Months Roadside Assistance Cover** - Including mainland UK & Europe
- ✔ **Recall check** - any previous manufacturer recall requirements completed
- ✔ **Tyre check** - at least 3mm of remaining tread
- ✔ **Brake pads check** - no more than 70% worn down
- ✔ **HPI-cleared** - no outstanding finance or insurance write-offs
- ✔ **Expert Flexible Finance Advice** - access to a range of funders and products
- ✔ **Value My Car** - with our online part exchange valuation
- ✔ **5-Star Premium Valet**
- ✔ **A unique 30-day no quibble exchange**

*We are confident that we can find the right car for you.*

📞 01983 523232 🏠 [esplanade.co.uk](http://esplanade.co.uk)

# EM CARS

Ventnor Industrial Estate, Old Station Road, Ventnor

MOT TESTS  
SERVICING  
REPAIRS  
WELDING  
EXHAUSTS

DIAGNOSTICS  
BRAKE CHECKS  
**FREE** BULB CHECKS  
**FREE** TYRE CHECKS  
AIR CONDITIONING

TYRES  
PERFORMANCE ENHANCEMENTS

## 01983 854927

# 10% OFF



Any labour charge on your next visit



Pre-booking is essential & discount must be requested at time of booking. Voucher to be produced with payment

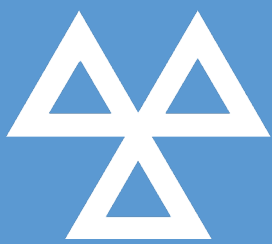
Valid until 31st August 2021



# £10.00

# OFF YOUR NEXT MOT

WITH THIS ADVERT



# WESTRIDGE GARAGE

*Serving the Isle of Wight*



# TEL: 01983 562717 / 562160

[www.westridgegarage.co.uk](http://www.westridgegarage.co.uk)

Brading Road, Ryde, Isle of Wight, PO33 1AY



This voucher cannot be used in conjunction with any other reduced price MOT offer. (rrp £54.85). Exp 30th June 2021



**March  
14th**

# Spoil Mum on *Mother's Day*

It's been a tough year — and being away from our loved ones has been particularly hard.

**B**ut local businesses are pulling out all the stops to make sure we can still say a very special thank you to Mum this Mother's Day, for everything she does.

Maybe your mum loves an afternoon tea — why not send her a special takeaway cream tea for her to tuck in to at home? Or perhaps she's more of a flowers or wine kind of mum, we've got you covered.

Take a look at these local businesses offering home delivery or collection services, so you can still make March 14th a special one.

## How about a luxury Mother's Day hamper from My Little Acorn, including:



- Two homemade fruit or plain scones
- Two homemade triple chocolate brownie slices
- Two slices of homemade Victoria sponge cake
- Nine assorted finger sandwiches with premium fillings
- Selection of luxury macarons
- Two Tiptree strawberry jams
- Two Rodda's clotted creams
- Fresh selection of berries
- Two packets of premium Border Biscuits
- Whittard of Chelsea Tea
- And a personalised handwritten Mothers Day card



Just £40 with free delivery across the Isle of Wight. There's a limited number of these hampers available so customers are encouraged to pre-order, by Wednesday 10th March.

Tel: 01983 509267 [www.mylittleacorniw.co.uk](http://www.mylittleacorniw.co.uk)

## Fresh bakes from Grace's Bakery...

**Grace's Cream Tea**  
Fresh & Handmade!

FREE ISLAND-WIDE DELIVERY 📍 GRACESBAKERY.UK/SHOP 📞 01983 632231

## Flowers and chocolates from Summer Lilly's...

**SUMMER LILLY'S FLOWERS**  
115 St James Street, Newport,  
Isle of Wight PO30 5HB

*Summer Lilly's*

[www.summerlillysflowers.com](http://www.summerlillysflowers.com)

10% off when quoting the BEACON | 01983 716540 | [summerlillyflowers@gmail.com](mailto:summerlillyflowers@gmail.com)

## Mum will love a case of her favourite wine...

**WINEBULANCE**  
WINEBULANCEIOW.COM

- FREE DOORSTEP DELIVERY
- PRE-SELECTED CASES OF YOUR FAVOURITE WINE
- HIGH QUALITY WINES AT AMAZING VALUE

## A bouquet of flowers from Bay Tree Florist...

(01983) 298 835 | [www.baytreefloristiw.co.uk](http://www.baytreefloristiw.co.uk) | [@baytree.florist.7](https://www.facebook.com/baytree.florist.7)  
@baytreefloristiw | Address: 41 Cross Street, Cowes P031 7TA

## WIN A BOUQUET OF FLOWERS

Courtesy of Bay Tree Florist, this Mother's Day.

Just head over to our Facebook page to find out how to enter.

@iwbeacon



# HAVE YOU DISCOVERED...



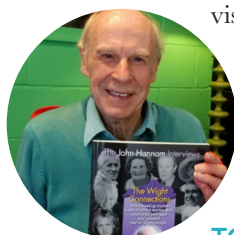
If not, you are missing out! Hidden Island is all about Beacon readers making the most of what the Island has to offer. If you love the Isle of Wight then you will love Hidden Island and what's more, all the benefits are completely **FREE!**

**T**his special membership club gives you the opportunity to experience exclusive competitions, discount vouchers and offers, exciting online events and fascinating features as well as a **FREE** online magazine every month. What's not to like?

Sign up today and here are just a few things you could take advantage of this month:

### AN AUDIENCE WITH JOHN HANNAM

Through his extensive career, interviewer and writer John Hannam has been in conversation with stars including Charlton Heston, John Mills, Prince Edward, Cliff Richard, Martha Reeves, Victoria Wood, Ken Dodd, Bruce Forsyth, Alan Rickman, Twiggy, Jeremy Irons, Michael Winner, Judi Dench and



numerous soap stars. And now it's our chance to ask him the questions.

In our upcoming online event, we'll be asking him what they were really like and he'll share some amusing anecdotes from those meetings.

You can watch John speak live on Thursday, February 25th at 7pm. Simply visit Hidden Island, on our website to register to be at the event.

Missed it? Not to worry, there'll be an opportunity to watch it back after the event. Keep your eyes peeled on our website for more details.

### WIN A YEAR'S SUBSCRIPTION TO BRITBOX

Are you a lover of British TV? Tell us what your favourite UK show is, and be in with a chance to win a year's



subscription to BritBox — which will be showing TV drama 'The Beast Must Die' filmed on the Isle of Wight, this year. Head online to find out how to enter.

The closing date is 31st March - we'll pick a winner and post the following week! Best of luck!

### FREE FOUR WEEK COOKING AND BAKING COURSE

Learn to cook with confidence! Get equipped with both the theory and practical skills to give you the edge in the kitchen.

### FREE ONLINE GARDENING MAGAZINE

With spring in the air it's time to hit the garden. After a long winter lockdown everyone is keen to get back outside - so get inspired with this e-zine of great gardening features. 🌱

Introducing

# hidden island

making the MOST of our island

from **Beacon** MAGAZINE

## Join our new membership scheme and make the most of our wonderful island in 2021

Exclusive competitions, money saving offers, priority events, webinars, e-mags, fascinating articles and inspirational ideas for your downtime

Visit [iwbeacon.com](http://iwbeacon.com) to join






# Pine Nut CORNbread

**INGREDIENTS**

**For the cornbread**

- 60g pine nuts, toasted
- 230ml coconut oil, melted
- 300ml almond milk
- 430g cornmeal
- 100g plain flour
- 1 teaspoon baking powder
- ½ teaspoon baking soda
- Pinch of ground sea salt & black pepper

**For the sweet potato puree**

- 1 medium sized sweet potato, cut into 2inch chunks
- 4 tablespoons soy milk

**For the sun-dried tomato cream**

- 80g sun dried tomatoes
- 2 shallots, roughly chopped
- 8 basil leaves
- 470ml almond milk
- 1 pak choi
- 4 tablespoons rapeseed oil

- For the tomato salad**
- 10 cherry tomatoes, cut into quarters
  - 50g chives, finely chopped
  - Juice of half a lemon

Author of the new Plant Based Cookbook, Brad Roe, shares his delicious recipe for Pine Nut Cornbread with Sweet Potato Puree, Sundried Tomato Cream and Crispy Pak Choi.

**METHOD**

**For the cornbread**

**1** Preheat your oven to 200°C/400°F then in a medium sized bowl mix the flour, pine nuts, cornmeal, baking powder, baking soda, salt and pepper together.

**2** Using a separate bowl, mix the coconut oil & almond milk then add this to the cornmeal mixture and thoroughly mix. Grease a 9-inch square baking tin with olive oil (or use 6 mini moulds) fill with the mixture then bake for 30 minutes. If you insert a knife into the cornbread, pull it out the check to see if the knife is clean and hot then it is ready.

**For the sweet potato puree**

**3** Place the sweet potatoes into a pot, cover with water and boil for 25 minutes or until soft, drain then add the soy milk and mash up. Season to taste.


**For the sun-dried tomato cream**

**4** Place all the ingredients into a medium sized saucepan, bring to a boil then simmer for 20 minutes.

**5** Puree in a standing blender on high speed for 40 seconds then season to taste.

**For the pak choi**

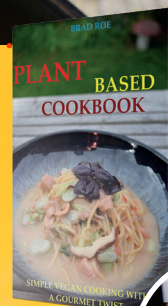
**6** Using a large sauté pan on medium heat add the rapeseed oil. When the oil is hot, add 4 pak choi leaves. Cook for 10 seconds then turn over and continue cooking for another 10 seconds.

**7** Place onto a baking tray, cover with parchment paper and another tray on top to weigh the leaves down. Bake at 200°C/400°F for 1 hour. Leave to cool down then carefully take off the paper. 



SERVES

4



**WIN A COPY** of Brad Roe's new Plant Based Cookbook.

Brad Roe grew up in Essex, moving to the Isle of Wight when he was 13. At the age of 18, he emigrated to the USA, where he spent 17 years working as a chef in Vegas at five star hotels, including 11 years at Caesars Palace.

Brad has now settled back in Coves with his partner and children. He won an AA rosette award in 2017 and published two cookbooks in 2020.

Want to get your hands on one? Simply email [win@iwbeacon.com](mailto:win@iwbeacon.com) with your details by March 31st.

The Plant Based Cookbook can be purchased at [www.amazon.co.uk/dp/B08RT31HL6](http://www.amazon.co.uk/dp/B08RT31HL6)

THE ISLAND'S FAVOURITE...

# isleofwightradio

THE ISLAND IN YOUR POCKET



- ✓ Latest news
- ✓ Listen live
- ✓ Message the studio
- ✓ Traffic, travel and weather

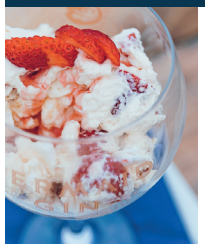
Download Isle of Wight Radio in your app store



## THE MERMAID BAR

OPEN DAILY 11AM - 11PM | FOOD SERVED DAILY 12PM - 8PM

VIEW OUR STILLS IN ACTION | SAMPLE OUR AWARD WINNING SPIRITS



WE ARE CURRENTLY CLOSED DUE TO LOCKDOWN, BUT WATCH OUR FACEBOOK PAGE @MERMAIDBARIOW FOR REOPENING TIMES WHEN RESTRICTIONS LIFT

ISLE OF WIGHT DISTILLERY, PONDWELL HILL, SEAVIEW, ISLE OF WIGHT. PO33 1PX  
01983 613653 WWW.ISLEOFWIGHTDISTILLERY.COM

MERMAIDBAR@ISLEOFWIGHTDISTILLERY.COM

@MERMAIDBARIOW f @



MERMAID GIN SMALL BATCH ISLE OF WIGHT DISTILLERY

# LIVE & LOCAL

WITH DAVID FRANCIS  
THE ISLAND'S FAVOURITE...  
isleofwightradio



It is well known that the Island has a history of great music and bands, whether it is Dancer, The Waltons or Reminder and of course there's Level 42 and Thin Lizzy's Snowy White.

It seems now that we are in lockdown once again that more Isle of Wight musicians and producers are using the time to make music. In fact, 99 Bears are a band who got together because of lockdown and their new album *Dances with Demons* was written and recorded on the Island last summer. It is an album that talks about mental health from all angles, as John from the band told me: "The track *Therapy* is a sneer at the underfunding in the NHS and the lack of individual care, it's a cynical look at what the doctors and nurses are having to deal with"



There are 13 tracks on *Dances with Demons*, all with a slightly different musical sound. The production and performance on the album are incredible and if you have a chance listen to the Vaudeville sounding *You Gotta Learn to Love Yourself*. You can hear more from 99 Bears in my Live and Local Podcast which is available now from your podcast provider.



The diversity in music that is being made on the Island is fascinating. Beth Brookfield is 17 years old and recently released the haunting Country track *The Journey*. Beth explained that she wrote the track when she was 15 years old and has been inspired by bands like *The Carpenters* through to Taylor Swift's new album. Beth also gave some tips on how to get into the music industry and its not just picking

the right instrument, networking is the key and with a community of musicians that seems to be unique on the Island it seems there is space for anyone, no matter what the genre or style. B

SPONSORED BY



If you have a band or perhaps, you're a solo artist or a producer and you would like to have your music heard on the Live and Local Podcast then email me an MP3 with a biography and send it to me at [david.francis@iwradio.co.uk](mailto:david.francis@iwradio.co.uk)

# Book Review



## AWAY WITH THE PENGUINS

By Hazel Prior

A beautiful story about a feisty 86-year-old, desperate to embark on one final great adventure.

Veronica McCreedy spends her nights watching nature documentaries alone at home in Ayrshire and has done for many years. Nobody ever visits her 12-bedroom home on the Scottish coast, except for the gardener and the cleaner — whom she finds increasingly annoying.

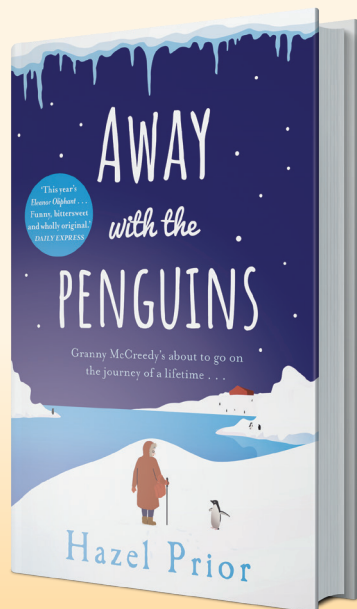
Mrs McCreedy keeps her past locked away in a little black box, hidden in the dusty spare room.

When she forces herself upon the Penguin Project and its scientists in Antarctica, it's not just her new surroundings that are icy. Many people find it difficult warming to the elderly Scot. All, that is, apart from one newborn bundle of fluff, who begins to open up her heart and mind. Then one day, while she's far away from home, her stories are unearthed and the reasons behind her solitary life begin to make sense.

A rollercoaster of emotions, which took me just three days to devour. A story of new beginnings, unconditional love — and a powerful reminder that nobody is ever too old to discover a new passion.

If you liked Eleanor Oliphant, you'll love this.

*A story of new beginnings, unconditional love — and a powerful reminder that nobody is ever too old to discover a new passion.*



Review by Amy Shephard

You can purchase *Away with the Penguins* from Medina Bookshop, at 50 High Street, Cowes.  
[www.medinabookshop.com](http://www.medinabookshop.com)

### Beacon MAGAZINE CONTACT US

CALL US  
01983 522123

VISIT US  
[iwbeacon.com](http://iwbeacon.com)

FACEBOOK  
[iwbeacon](https://www.facebook.com/iwbeacon)

INSTAGRAM  
[@beaconiow](https://www.instagram.com/beaconiow)

TWITTER  
[@iwbeaconmag](https://twitter.com/iwbeaconmag)

EMAIL  
[hello@iwbeacon.com](mailto:hello@iwbeacon.com)

## BONCHURCH GARAGE

TEL: 854145



FAX: 854145

### MOT's, Servicing and Repairs

Air conditioning recharge and servicing • Modern diagnostics undertaken

TEL 01983 854145 EMAIL [bonchurchgarage@aol.com](mailto:bonchurchgarage@aol.com)

Bonchurch Garage, Bonchurch Village Road,  
Bonchurch, Ventnor PO38 1RG



## STUDIOPHASE

The Isle of Wight's local TV experts

Why choose us?

- CAI approved
- Friendly, reliable engineers
- We have over 30 years of local knowledge

Call 01983 404406  
[www.studiophase.com](http://www.studiophase.com)



sky

Freeview

Freesat

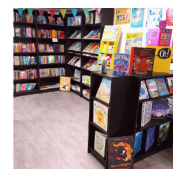
BAB

Home Media



Medina Bookshop  
50 High Street, Cowes

01983 300044



Open for 'Call and Collect'

Free local delivery

[www.medinabookshop.com](http://www.medinabookshop.com)

# It's OK...



## not to be ok

**We all have times when life gets on top of us** – sometimes work-related like a stressful workload, a negative atmosphere or even being made redundant. Sometimes it's something else; our health, our relationships, or our circumstances.

Whatever the reasons, if you feel you are not coping as well as you would want to be, **help is at hand.**

Call NHS 111 or visit  
[www.iwmentalhealth.co.uk](http://www.iwmentalhealth.co.uk)

## to ask for help

**We all have times when we come across unexpected problems.**

It might be employment issues, housing difficulties or worrying about money. And sometimes it can be hard to ask for advice.

Whatever your circumstances, if you need support and guidance, **help is at hand.**

Freephone 0800 144 8848  
or visit [www.islehelp.me](http://www.islehelp.me)

# SHANKLIN THEATRE IN THE SUMMER OF '56

Sixty years after spending the summer season acting at Shanklin Theatre, Janet Sandys-nee-Derry returns as a guest.

By Michael Beston

It was the summer season of 1956; Shanklin Theatre was home to Barry O'Brien's repertory company *The Shanklin Theatre Company* presenting a season of West End play successes. The Barry O'Brien company would put on repertory plays each week throughout the summer season, many of which brought famous faces of that era to the Isle of Wight.

Among the cast was a young 21 year old Janet Derry. Now 85 years old, Janet recently holidayed on the Island, and wrote a lovely letter to Shanklin Theatre.

"For me it was a special trip, I spent the summer season of 1956 acting in the Shanklin Theatre, a different play each week, I also celebrated my 21st birthday there."

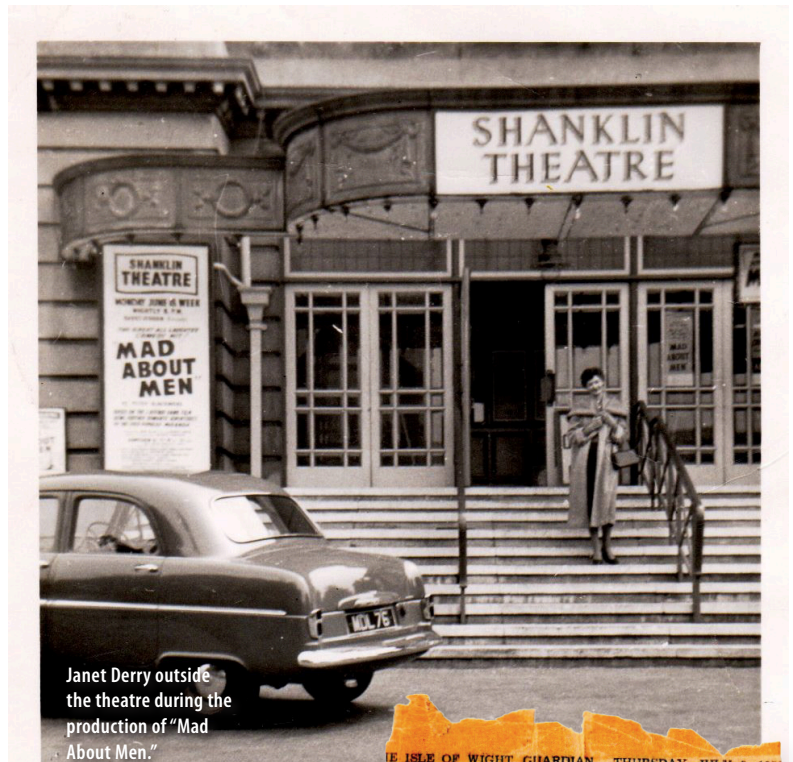
"What a lovely surprise it was to see it was still up and running, we all came to see the show (Best of the West End & Beyond) and thoroughly enjoyed it."

The week commencing Monday 13th August 1956 saw the Barry O'Brien production of the play *Tabitha* written by Arnold Ridley & Mary Cathcart Borer, other plays for the summer season were entitled; *Something About a Sailor*, *Mad About Men* & *The Dashing White Sergeant* by Charles Gaidner and Rosamunde Pilcher.

"Impish, 21-year-old Janet Derry, "baby" of the company, took the acting honours at Shanklin Theatre on Monday evening, when Mr Barry O'Brien's company started a week's showing of *The Dashing White Sergeant*," wrote the Isle of Wight Guardian in July 1956. "Dark-haired Janet, with

**For me it was a special trip, I spent the summer season of 1956 acting in the Shanklin Theatre, a different play each week, I also celebrated my 21st birthday there.**

Below: The cast of the Barry O'Brien production company photographed in Daish's Hotel garden, Shanklin in 1956. Janet can be seen in the middle of the bottom row.



Janet Derry outside the theatre during the production of "Mad About Men."



Above: Shanklin Theatre 1956 summer season programme.



the Audrey Hepburn hair-style and a touch of Miss Hepburn's elfin-like charm, gave her best performance to date as Fiona Cunningham, the spoilt but likeable fifteen-year-old daughter of the Cunningham's of Keltnie."

The Friends of Shanklin Theatre would like to say a special thank you to Janet for sending in the photos, programme and cuttings and hope to see her again soon at the theatre. ☺



Image courtesy of South Western Railway



Island Line has said a final farewell to its Class 483 trains, ahead of a three month closure and £26million upgrade.

# Memories of

# ISLAND LINE

**O**riginally built in 1938 for the London Underground, the Class 483 trains have had a service life of 82 years and more than three million miles. They arrived on the Island in the late 1980s.

The fleet will be replaced by the new Class 484 trains, the first of which arrived on the Isle of Wight in November. The Class 484s re-use the body-shells, running gear and other small components from ex-London Underground D78 trains from the District Line, completely overhauled and refurbished with many new features. Five two-car trains have been ordered with the rest of the fleet due to be delivered by March.

The new carriages, built by Vivarail in the West Midlands, will replace the current trains on the line between Shanklin and Ryde Pier.

The Class 483 fleet departed for the final time at 11.17pm from Ryde Pier Head on Sunday, January 3rd, bringing to an end a career spanning over 80 years and an Island Line career spanning more than 30.

The network of trains on the Isle of Wight has a fascinating history, dating



A train leaving Ryde Pier Head



back much further than the Island Line name. A line operating steam trains from St John's Road in Ryde to Shanklin first opened in the summer of 1864, courtesy of Isle of Wight Railway. Two years later, the line was extended to Ventnor.

In 1880, further additions to the line connected the Island's trains with ferry services at Ryde Pier Head. This line, from Ryde's St John's Road was jointly owned by London & South Western Railway (LSWR) and London, Brighton & South Coast Railway (LBSCR).

In 1921, following the introduction of the Railways Act, the Island's railways became part of Southern Railway. Then in 1948, the company was nationalised and ownership passed to British Railways, later known as British Rail.

The Shanklin to Ventnor line closed in the spring of 1966, followed shortly by the removal of all steam trains from the line.

A year later, trains returned to the Ryde to Shanklin line, in the form of electric rail. Two new stations were opened in the years to follow, Lake Station in 1987 and Smallbrook Junction in 1991.

The line was officially branded 'Island Line' in 1994, and in 1996, Stagecoach Group took over the Island Line Trains franchise,

followed by South Western Railway, in 2017, who continued to operate under the Island Line brand.

The Isle of Wight's outgoing fleet have been operating on the line since 1990, following a lengthy service on the Northern Line with London Transport since the start of the Second World War. And now one of the Class 483 trains looks set to be preserved on the mainland.

Following their final withdrawal, the London Transport Traction Group has been officially informed by South Western Railway that it has successfully secured one of the trains for preservation at the Epping Ongar Railway in Essex.

An official from South Western Railway informed the group it "will have a unit for preservation" but "can't confirm which unit yet", but will most likely be offered to the London Transport Traction Group 483006 or 483008.

This is pending a final decision from the Science Museum's Railway Heritage Designation Advisory Board who is managing the disposal of some of the trains.

Unit 483007 is also set for preservation, but not by the London Transport Traction Group. This unit will be heading for the Isle of Wight Steam Railway for display in their

*The fleet is estimated to have run for more than three million miles during its 82 years in service.*



'Train Story' Museum. Steve Backhouse, Isle of Wight Steam Railway General Manager, said:

"The 1938 stock have been an iconic feature of the Isle of Wight for the last 30 years and we're delighted that a unit will be preserved at Havenstreet so that it can be enjoyed by future generations."

South Western Railway told the London Transport Traction Group that they should expect to be able to collect their unit from Island Line "around the end of the line closure in March". The unit will then be transported back to the mainland for restoration and conversion to battery operation.

Daniel Nash, Secretary and Founder of the London Transport Traction Group, said: "For us this is truly wonderful news, but it also represents only the first step in our journey that we hope will soon see a class 483 train, cosmetically restored to 1950s London Transport condition, running on the Epping Ongar Railway under its own power and visiting galas around the country. This will also enable us to take a tube train where none has ever gone before, allowing us to introduce the joy of the 1938 Tube stock to new audiences. 🇬🇧"

# Changing Food BEHAVIOURS

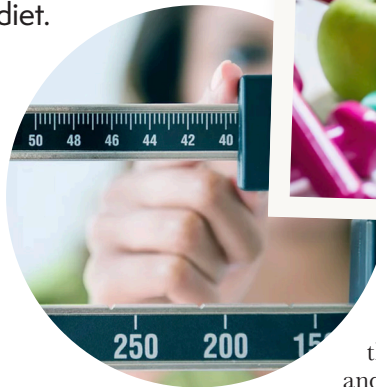
Wight Nutrition offers a fresh approach to managing your diet.

The company's primary objective is to help you identify ways of changing food and behaviour habits to enable your long-term goals to be reached and sustained.

We have all tried diets that didn't work for us, or we can't stick to them, or we put the weight back on once the diet is over. Wight Nutrition looks beyond the next few months and supports you in making small but effective changes – creating new habits.

They look at ways to support you and the whole family, taking into account the way that you live now to ensure changes that are recommended will be sustainable by everyone.

Wight Nutrition can also offer consultations



*We have all tried diets that didn't work for us, or we can't stick to them, or we put the weight back on once the diet is over*

to schools, care homes and other institutions to improve understanding of the impact our choices have and the importance of small changes. They specialise in disease management (like diabetes, cardiovascular disease and irritable bowel) as well as fussy or tricky eaters!

Call now or get in touch through the online enquiry form to have an informal chat and see how Wight Nutrition might be able to help. ☺

Tel: 07534 939929  
www.wightnutrition.co.uk

## Wight Nutrition

Enabling change and understanding

Manage your weight, lifestyle, diabetes, IBS or cholesterol & achieve your long-term goals with guidance & support.

Tel: 07534 939929

www.wightnutrition.co.uk

## VENTNOR MOBILITY CENTRE



Regain your independence... 

Agents for scooters, rise/recline chairs, stairlifts and all available mobility aids



**FREE HOME SURVEY - We also Buy and Sell - Can't come to us, we'll come to you!**

Unit 4, Old Station Road, Off Mitchell Avenue,  
Old Station / Tunnel, Ventnor PO38 1DX  
Tel: 01983 855545

**PRE-BOOKED APPOINTMENTS ONLY TO AVOID DISAPPOINTMENT**

*"We don't just sell hearing aids, we provide total hearing care"*

## Wight Sound Hearing

Registered Healthcare Professional  
Colin Stockdale RHAD MSHAA AIHHP (Executive Member)

12 High Street, Shanklin PO37 6LB  
Tel 01983 86 59 59

All Hearing Tests and Consultations are FREE

Latest Digital Testing & Fitting Equipment

Video Otoscope (see inside your own ear)

Try Before You Buy OR RENT a Digital Hearing Aid (from £1 A DAY)

EVERY Brand of Hearing Aid Available in the UK

Free Home Visits

Easy Payment Plans

# STAYING ACTIVE IN YOUR HOME

As Lockdown across England puts an even greater emphasis on the health and wellbeing of older people in isolation, the Goldies Charity is increasing its weekly online content to include gentle chair-exercise at home.

When 'Goldies' were forced by Covid to cancel all their daytime sessions across England and Wales last March, they introduced online sessions through Facebook and YouTube. These sessions developed to become twice weekly, with Tuesday sessions taken by Rachel Parry and Thursdays by Cheryl Davies, who have both worked for the charity for a number of years as daytime session leaders.

With Cheryl's Thursday session based on the popular Goldies format of singing with well-loved popular songs and on-screen words, the weekly Tuesday 11am sessions led by Rachel have developed into a more magazine-style format.

Rachel records her sessions from



her home in Thornbury near Bristol. She said: "We have had a fantastic response from older folk across England and we feature different subjects each Tuesday. Many Age-Related organisations, local authorities and town councils promote the sessions.

The chair-based exercises encourage people to stretch as well as sing and we hope to develop these in the weeks ahead. We know that there is an emphasis this winter on preventing falls in the home and our gentle chair exercises encourage movement to those well-loved songs of the 60s and onwards.

"Singalong to Bring Me Sunshine, smile and stretch."

*You can delay or reverse mobility limitations and maintain independence, and you can enjoy later life to the full*

Dr Afroditi Stathi is Associate Professor in Physical Activity, Ageing and Health at the University of Birmingham and a Trustee of the Golden-Oldies Charity. She has been closely involved with the development of gentle active songs which have been introduced by Goldies, she said: "Evidence stresses that the barriers of having no reasons to get out and about and nothing to look forward to can be broken with the Goldies wellbeing sessions. The message is loud and clear: You can delay or reverse mobility limitations and maintain independence, and you can enjoy later life to the full. Loneliness in old age is not inevitable."

Goldies Founder, Grenville Jones, added: "When we were forced to cancel our live Goldies sessions last year this meant that our older folk could not come to us to enjoy a session in their community room, church hall or library. As they could not come to us, through the internet, we took Goldies into their homes and sofa-singing started!"<sup>Ⓜ</sup>  
[www.goldieslive.com](http://www.goldieslive.com) is easy to access and is also freely available on YouTube and through Facebook.

## ISOLATED at HOME and LOVE a good old fashioned Singalong?

Join Rachel and Cheryl every Tuesday and Thursday with **Goldies FUN** singalongs **FREE** on YouTube. All your favourite songs with on-screen words - watch sessions at any time.

If you have an elderly relative or neighbour **PLEASE** tell them about our FUN sofa-singing!

**Goldies**  
live.com



Registered Charity Number: 1121600

See ▶▶ [www.goldieslive.com](http://www.goldieslive.com)



## News from Ryde South

by Cllr Charles Chapman

Thank you for the feedback you have given to me over the past months. High on the list was the cost of parking, suggesting that this could be wrapped up in the ferry fare with the knock on effect of free parking for the Island. Second was the concern as to the privatisation of the NHS. We have already learnt that some of these ideas have been put in 'hold' and that collaboration between departments is now being highlighted rather than being outsourced.

Third, local services need to be re-situated to serve local people. It's unbelievable that Ryde was served with local health centres and its own hospital which was moved to Newport, in the belief that it would improve its effectiveness and save money. The same concept which is now being considered for parts of our only Island hospital.

Despite many objections, the development on the boundary of Ryde might go ahead. I spoke out against the 'joining up' of various locations i.e. Binstead with Ryde, Carisbrooke with Newport, Bembridge with Forelands. To ensure our Island retains its uniqueness for current and future tourism, our main source of income, we must stop it becoming a building site.

Already the growth of second homes impacts on our already strained resources, with the knock on effect that our local communities become fragmented; with too many of our young people having to leave the Island. Covid-19 has shown us the

importance that family, friends and a stable local community have on our physical and mental health.

I'm still able to walk my ward as part of my exercise, keeping social distanced with a face mask to get things done. What is noticeable, even though it's winter and has been incredibly cold and wet, is the lack of conversation. I do miss the general chit chat and update on people's lives.

'People Matter IW' is an excellent site, signposting organisations which may be able to help you. Coronavirus Ryde Support Hub 716020 (Aspire Ryde) are a local organisation which support people in many ways. I cannot stress enough the problems caused through loneliness. The 'Good Neighbour', scheme which many of you participated on before the pandemic has lost its momentum, due to social distancing. Even so, if you can call somebody who is alone, it would be appreciated. One of my constituents (who is in her late 80s and has recently lost her husband of over 60 years) is using videos sent to her by her former pupils/friends on cheerful and amusing chats.

Island Roads are very busy in Ryde. Particularly in my ward, their signs are being moved, which is causing problems, mainly for motorists. If you see anybody moving these signs, please contact Island Roads.

☎ 07867626733  
✉ charles.chapman@iow.gov.uk



## News from Ryde North East

by Cllr Wayne Whittle

There has been much change since my last report. Not only did we find ourselves in lockdown number three, we also discovered that the South of England Avian Flu had reached Ryde affecting our waterfowl on Canoe Lake. Apologies if my last newsletter asking residents who feed dry food to consider reducing the portions confused matters, but had submitted the report before the December 2020 Defra test results were issued confirming Bird Flu had been found in one of our swans. Once discovered, Canoe Lake was fenced off with notices posted instructing residents not to go near the lake for fear of spreading the disease.

After reading an Environment Agency flood warning for Ryde during the holidays, I went to Simeon Street recreation ground to check if the Monkton Mead trash screens were cleared and the floodgates were up. Although the flood warning had asked for cars to be moved from roads around the Monkton Street area, the floodgates were still not in place, so I notified the EA who sent out their local team to erect the three floodgates as the river was running high due to tide being in during heavy rain. Once the tide went out the river level dropped considerably with any high excess water going out to sea via the Island Line rail tunnel. There were further flood warnings for Ryde at the end of January and once again any overflowing water was carried out to sea.

There has been quite a lot of vandalism during lockdown. I have asked Cllr Stuart to raise it with the Police and Crime

Commissioner requesting Ryde's police to patrol our public spaces more often. All residents who see this type of crime, please call 101 and report it.

The Island's regeneration team worked throughout the holidays preparing the new Government business grant forms that constantly needed revising as the Island swiftly changed through tiers 2, 3, 4 to where we now find ourselves. The new forms have been available to access on the IWC website since the 11th of January. If you haven't already applied, Island businesses eligible for Government grant support under the latest national lockdown can still apply. The application forms and details of the grant help can be accessed via: [iow.gov.uk/covid19\\_businessadvice](http://iow.gov.uk/covid19_businessadvice)

There are grants available for up to £10,000 towards helping those homeowners most in need to raise energy efficiency and cut energy bills by funding insulation, green heating systems like heat pumps, draught proofing, double glazing, solar panels and other energy efficiency measures, if you're interested call 01983 822282 or email [info@footprint-trust.co.uk](mailto:info@footprint-trust.co.uk)

The emergency Appley sinkhole repairs have caused damage to connecting roads and pavements around Canoe Lake caused by heavy vehicles and tankers attending the repairs. After contacting Southern Water they have assured me that they will be making good all associated damage once the sinkhole damage is repaired.

☎ 07792 670771  
✉ wayne.whittle@iow.gov.uk

# Dedicated centre for 'Long Covid' launches

By Oliver Dyer

A new centre designed to help deal with the long-term effects of COVID-19 is up and running on the Isle of Wight.

This service launched after evidence emerged showing that some people who contract coronavirus are left with longer-term symptoms of the virus, months after initially falling ill. These can include pain, a persistent high temperature, breathlessness, chronic fatigue, brain fog, anxiety and stress. However, many patients recover with support, rest, symptomatic treatment, and with a gradual increase in physical activity.

The Long-COVID service is available by GP referral only and appointments will be available both face-to-face and virtually. When referred into the Long COVID service, patients will undergo a number of physical and psychological assessments. Allied Health Professionals

(AHPs) will then work alongside other health teams to develop a support plan that will help improve their health outcomes and quality of life.

Dr Michele Legg, GP and clinical chair of NHS Isle of Wight Clinical Commissioning Group, said: "This new service not only gives us an opportunity to support those in need, but will also help us learn out more about Long COVID and find new ways to help people affected by it."

"It also demonstrates that the NHS is not forgetting about patients who are dealing with the longer-term effects of the virus. We are here to support you."

The service is part of a £10m initiative by NHS England who is funding 69 services across the country. You can find more information about Long COVID on the NHS website. **Anyone experiencing the symptoms of Long COVID are advised to visit [www.yourcovidrecovery.nhs.uk/](http://www.yourcovidrecovery.nhs.uk/) for more information.**



# All Island residents to be vaccinated by September

© Sky News

All residents on the Isle of Wight who are over 18 years of age will be offered a Coronavirus vaccine by September, the Foreign Secretary has told Sky News.

Speaking on Sophy Ridge on Sunday, the Foreign Secretary said: "Our target is that by September to have offered all the adult population a first dose, if we can do it faster than that great but that's the roadmap."

The target is more specific than the government's vaccine delivery plan, which said that level of protection

should be provided "by the autumn".

The foreign secretary refused to guarantee that everyone will get their second vaccine dose within 12 weeks. He said only that the government "ought to be able to deliver on that".

Mr Raab also said that he hoped some restrictions can be lifted "gradually" by March so the country can "get back to normal". He said the things that put that "at risk" are the new variants and pressure on the NHS, as he urged people to follow the rules.

# Cycle loan scheme for key-workers

By Iona Stewart-Richardson

The free Key Worker Cycle Loan Scheme from the IW Council has reopened once again to help support key workers through the lockdown.

The aim of the scheme is to encourage key workers to choose cycling as their preferred mode of travel.

During the last two lockdowns, social workers, hospital staff, teachers, supermarket staff and prison officers were among those to receive free access to a loan bike for a month.

Four e-bikes are now also available as part of the loan scheme.

These will be provided on a first come first served basis. Applicants interested in borrowing an e-bike will need to write a short paragraph in their application form

explaining how it will help them to start cycling to work. The strongest applications will receive an e-bike as their loan.

The council is continuing to work in partnership with established Island cycle hire businesses, Wight Cycle Hire and RouteFifty7, to deliver the scheme.

The scheme forms part of the council's Connect2Work initiative, which promotes sustainable and active travel options to employees and jobseekers. That, in turn, is part of the authority's Access Fund programme funded by the Department for Transport.

All hire bikes loaned to key workers through the scheme include a helmet, a lock, lights and delivery.

**For full details of the scheme, and to apply, please visit: [www.connect2work.info/keyworkercyclescheme](http://www.connect2work.info/keyworkercyclescheme)**

# Sandown building eyesore

By Jamie White

All residents on the Isle The owner of a derelict property in Sandown could be forced to sell it to the IW Council so that it can be brought back into use.

The council looks set to use compulsory purchase powers to acquire the building on the corner of Fitzroy Street and Station Avenue, which has stood empty for more than a decade. The premises consist of a number of units and has a current estimated value of £405,000.

In approving the move in principle, Cabinet members said it showed the authority was prepared to get tough

to bring long-term vacant properties back into use.

Council leader, Dave Stewart, said: "First and foremost we want to support owners to bring empty properties back into use. That said, we also want to make best use of available homes on the Island and we want our neighbourhoods to be pleasant places to live.

"For the minority of empty homeowners who knowingly and deliberately leave their properties empty year after year, we will take action. Overgrown and boarded up buildings attract pests and crime, and can make people's lives a misery.

Last month, the council issued a notice requiring the owner to carry out repairs to the property which has deteriorated significantly since an arson attack in 2008.

In January, Cabinet members agreed in principle to use compulsory purchase powers to acquire the premises and a further report will now be prepared.



## News from Bembridge

by Cllr Michael Murwill

### Environment and Sustainability Forum

It is always good to start the year with some good news. Over recent months, many residents have asked me when the successful Isle of Wight Council (IWC) Community Plastic and Environmental Forum would restart. The old forum that I set up brought together county/parish/town councillors, residents, businesses and environmental groups to discuss environmental matters that concern the island. The forum is being replaced with the Environment and Sustainability Forum (ESF), which will include and support the IWC's work towards sustainability, decarbonisation, and promoting the circular economy. The monthly forum will support and feed into the task and finish group for the Scrutiny Committee for Environment and Regeneration which has the remit to develop an action plan for the IWC to be net zero carbon by 2030.

The aim of the ESF is to debate and discuss (in a non-political manner), ways in which the residents, businesses and the IWC can develop plans for a sustainable zero carbon future.

I see this as a positive step forward, following on from the previous forum and the excellent improvement in waste recycling on the Isle of Wight since 2016.

If you are interested in joining this forum please send an email with your details to [sustainability@iow.gov.uk](mailto:sustainability@iow.gov.uk)

### Voting from home (simple and safe)

At the time of writing the local elections are due to take place on 6th May 2021 and it is unconfirmed whether there will

a postponement due to the Covid-19 pandemic. One option that many residents have asked me about is postal voting. This obviously saves time and means that you do not have to attend a polling station in person. Any registered electors can choose to vote by post, and you have the option to request a postal vote for a specific election, for a set time period, or to run indefinitely.

There is a very simple postal vote application form to complete, which has only eight questions on one page.

The form can be found at [www.iow.gov.uk/Council/OtherServices/Electoral-Registration/Postal-Votes](http://www.iow.gov.uk/Council/OtherServices/Electoral-Registration/Postal-Votes)

If you have a problem with obtaining a form via the website, please contact me and I will ensure that you receive a copy. The form needs to be returned to the Electoral Services Department, to be received by 17:00 on the eleventh working day before an election.

### COVID-19

If you need help, please telephone the IW Council (IWC) Coronavirus helpline **01983 823 600** or, for the latest advice, please visit the IWC COVID-19 website: <https://keeptheislandsafe.org/> where residents can subscribe to receive email updates from the IWC.

If required, Island residents can access mental health support and advice online at [www.iwmentalhealth.co.uk](http://www.iwmentalhealth.co.uk)

I continue to be available to assist residents so please do not hesitate to contact me if required.

☎ 07754 463 040

✉ [michael.murwill@iow.gov.uk](mailto:michael.murwill@iow.gov.uk)



## News from Sandown South

by Cllr Ian Ward

### A worrying start for 2021

There is much speculation why our Covid infection rates have increased so dramatically on the Island and in the Bay area in particular, but it is incumbent upon us all to keep ourselves safe and abide by the rules. Sadly, some members of our community have succumbed to the virus and I am sure we all send our sincere condolences to their families. Let's hope that the situation improves very quickly, and I send my best wishes to you all.

### Regeneration Update Pier Street Toilets - Good Progress - A Development Partner Selected

The redevelopment scheme for Pier Street Toilets have got off to a good start. The IW Council were delighted with the level of interested shown by the business community. A known local Island developer has been selected who intends to abide with the current planning scheme and is happy to manage the new public toilets. The developer wants to start the rebuild as

soon as possible. Let's hope the Covid lockdown does not delay work as it has for other sites in Sandown.

### Fitzroy Street & Station Avenue Corner Building - Good Progress - Compulsory Purchase Order Initiated & Enforcement Order Issued

After several years of complaints from me and negotiations with officers and the owner, at long last the IW Council has taken decisive action to tackle the derelict building on the corner of Station Avenue and Fitzroy Street. The IW Council has initiated a Compulsory Purchase Order (CPO) that will have to be approved by the Secretary of State for Housing, Local Government and Heritage (MHLGH).

Parallel to the Compulsory Purchase Order, the owner has been issued with an enforcement order to clear up the building and make it safe. The order was effective from 26th January 2021.

☎ 403193/0772559093

✉ [ian.ward@iow.gov.uk](mailto:ian.ward@iow.gov.uk)



## News from Sandown North

by Cllr Debbie Andre

The evenings are getting lighter and, despite the freezing temperatures, spring is on the way. I know we have been spending more time at home than usual for the past year and that has brought with it some additional challenges.

Many of us who were "just about managing" before the pandemic hit, find ourselves struggling to pay bills. Help is available. Please contact me and I can direct you to the various support networks.

I'd like to pay tribute to our fantastic community who have responded in so many ways to ensure that help is available to those who need it. To those who have volunteered for the Optio service providing free travel for people who cannot get to a vaccination centre. I encourage everyone to get vaccinated when it's offered so that we can protect ourselves and those we love. To those who donated their own tech equipment so Island children can continue to study from home. To Jackie and Audrey for providing temporary accommodation for those in need.

There is opportunity to change the face of our high street, but only by supporting our many independent businesses. Many local shops have a Facebook page and

will answer questions. There are several businesses who have adapted well, mainly in the catering industry, why not give them a try?

Why not recycle your unwanted goods via charity shops and pick up a bargain or two?

I'd like to thank parents for supporting their children to access remote online learning, often whilst working from home themselves. Our teachers have done an incredible job in adapting to new methods and keeping children focused so that they can continue to progress. I'd also like to thank students for embracing these challenges.

Many ward issues continue unabated and I continue to work with you to find solutions for the long term. The central hub number **823600** is still taking calls, for practical support and for those who feel isolated. [www.keeptheislandsafe.org](http://www.keeptheislandsafe.org).

Cllr Heather Humby is available on **402024** or [heatherhumby@sandowntowncouncil.gov.uk](mailto:heatherhumby@sandowntowncouncil.gov.uk) to support anyone at this difficult time.

Stay safe everyone and we'll get through this together.

☎ **07948 757977**  
 ✉ [debbieandre4sandown@gmail.com](mailto:debbieandre4sandown@gmail.com)

# Drone Image Shows Shanklin Railway Improvements

By Jamie White

A drone image has captured the extensive improvement works being carried out on the railway line at Shanklin.

Island Line is currently suspended while works are carried out on the track between Shanklin and Ryde, ahead of the introduction of new Class 484 trains.

It's all part of a £26 million overhaul of the network, funded primarily from the Department for Transport (£25 million), with support from Isle of Wight Council (£300,000) and Solent Local Enterprise



Photo by Ben Rue. Twitter: @PhotographyRue

Partnership (LEP) (£700,000).

New trains will replace the existing 82-year old Class 483 fleet, which were originally built in 1938 for the London Underground and served Island Line since the late 1980s.



## News from Shanklin South & Central

by Cllr Chris Quirk & Cllr Michael Beston

### Beach Safety Buoys To Be Reviewed

Anyone who uses the beach regularly will almost certainly have seen jet-ski type craft travelling at high speed dangerously close to bathers; clearly an accident waiting to happen. Working with IW Council officers & councillors, a Coastal Community Strategy Forum has now been set up. This will encompass actions to improve our holiday tourism offer by enhancing beach safety and building on the substantial funding from Central Government. We are aware of the most recent cliff fall under Appley Steps - closing a popular walking route between the beach and Rylstone Gardens. This is one of many cliff falls over the years that has impacted and closed access between the town, esplanade and the beach. Part of this strategy will cover beach safety and enforcement polices in the Solent.

Development of a Beach Management Framework is underway and has identified specific actions on:

- Review of all Safety Equipment and Signage
- Review the replacement of Bay Safety Buoys
- Investigate an Island wide Safety Policy or Byelaw

### Island Line Upgrade Update

Infrastructure works at Shanklin Railway Station are going ahead at pace. Work to re-align the station platform height and replacement of railway lines and track bed are well underway. There will be further improvements to all the Island Line stations, including free station Wi-Fi and providing new ticket vending machines at Shanklin, Sandown and Ryde St Johns Road. From now until 31st March 2021, no service will run on Island Line whilst work is carried out to deliver the biggest transformation to the line's infrastructure since 1967. As part of this project, the existing Island Line fleet will be replaced with newer and reliable trains; the new extensively refurbished Class 484 trains from Vivarail. These new trains will bring modern facilities to customers, including:

- On-board Wi-Fi
- Plug sockets,
- Wheelchair spaces and Passenger Information Screens

This significant £26m investment will also see upgrades being delivered to Island Line's infrastructure, including a new passing loop at Brading, which will facilitate trains to run a regular 30-minute service to improve connections with Wightlink ferries. The work to upgrade the track will also make journeys smoother, and upgrades to platforms will also improve accessibility. Funding for the infrastructure upgrade has been provided by the Department for Transport, Solent Local Enterprise Partnership and the Isle of Wight Council.

### New Performing Arts Centre

We are both Trustees of Shanklin Theatre and Community Trust, and have been involved from the earliest days of saving Shanklin Theatre. The theatre is now a successful venue providing a wide range of performances, but this limits the availability of the theatre for use of our local community groups. In order to expand the provision for local performing arts groups, the Trust is in the process of purchasing the old Shanklin Library from the IW Council. Our long term plan is to provide a fully functioning performing arts centre properly fitted and equipped for community groups to use.

### Blocking Development on AONB Land

As your local councillors, we both played a key role in dissuading Planning Officers in approving a housing development on the land off West Hill Road. This land is an Area of Outstanding Natural Beauty that provides easy access to Hungerberry Copse and Shanklin Down. After meeting with local residents, objections were submitted by the local members and Town Council. This application has now been refused planning permission.

Receive the latest council and community news for Shanklin here: <https://tinyurl.com/bestonquirk>

☎ **07802 705831** ✉ [chris.quirk@iow.gov.uk](mailto:chris.quirk@iow.gov.uk)  
 ☎ **07885 644426** ✉ [michael.beston@iow.gov.uk](mailto:michael.beston@iow.gov.uk)

# Westridge Garage celebrates 100 years

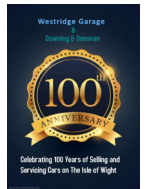
It's been 100 years since Westridge Garage Business founder Freddy Winkles formed a Partnership with Downing and Donovan's, Mr Donovan.

Downing and Donovan sold fuel in Ryde's Union Street and provided bicycle and radio repairs. Ryde Garage was later built in Victoria Street, selling and servicing New Standard and Triumph cars.

Following his success, Mr Winkles bought Westridge Garage, a small petrol station and workshops. Freddy's sons John and David soon joined the business and had workshops and showrooms added for the expansion of the BMC Franchises which became Austin Rover.

Having acquired franchises for Mitsubishi, MG and Skoda, Mark Winkles has been running Westridge of late, with his son James joining the sales team. He works alongside Robin Stoffell who has been at Westridge for 40 years and Marc Hooper who is well known for his many years selling Skodas. Sean from parts and Belinda the Company Sec have both been part of the business for a remarkable 40 years each. Three Westridge Technicians Steve, Wayne and Paul have been there 23.5, 26 and 19 years. While Rob, Westridge's Aftersales Manager is about to complete 16 years in March.

The Westridge team are proud to be a family-owned Island business with 100 years of unique family history – and are planning to celebrate once the Island is completely out of lockdown.  
[www.westridgegarage.co.uk](http://www.westridgegarage.co.uk)



# Meet the Island's Free-Flying Macaw, Saffy

By Iona Stewart-Richardson

“Don’t get a Macaw” - is the advice from an Isle of Wight woman who owns one - loves her and free flies her around the Island.

Katie Balmer from Sandown has owned her adorable female Macaw called Saffy since she was 12 weeks old and she is thought to be the only free-flying bird on the Island.

Training is particularly taxing - especially with a bird that’s scream can be heard from 5 miles away - which is why Katie says the “bond” is crucial (and probably explains why she showers with Saffy every day!)

Saffy started free-flying inside for 6 weeks at first then after “a lot of commitment” she was able to free-fly outside.

Katie says “a stroke of insanity” led her to become the mother of a

green-winged Macaw - and she chose the breed because of their “gentle nature” and ability to “bond” with their owner.

Katie, who when she isn’t with Saffy, works for charity Ability Dogs For Young People, says green-wing macaws are also brilliant for free-flying because of their bright colour and ability to make lots of noise.

Speaking exclusively to Isle of Wight Radio Katie said:

“I was always in awe of

Macaws and I went to Florida and saw a big free-flight show where they had about 80 Macaws flying in the sky - then I started to do a bit of research and that’s how I originally got into Macaw ownership. I only wanted a bird if I was able to free fly it because I don’t agree with keeping these big birds in cages with no enrichment”.

Asked what advice she would give to anyone thinking of getting a Macaw, she said:

“Don’t do it!

These animals are big, they bite, they scream - which can be

heard from five miles away...If you have got neighbours there is no chance - these birds need time, commitment and money and they are NOT good pets and I wouldn’t recommend them to anyone!”

Whenever Saffy, who is harnessed trained, is taken out to free-fly - of course, there is the risk that she may not return- but she

always has.

Incoming weather, wind direction and birds of prey in the area are among the things Katie has to consider before she takes Saffy outside.

She says getting the “diet right” is vital not only for their quality of life but it is also key when training them for free-flight.

If you are out walking and you keep your eyes to the skies, you may see Saffy near the two places she likes to free-fly.

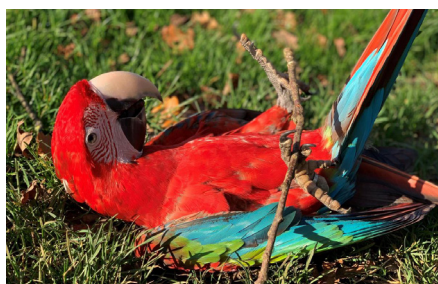
The pair go to a footpath in Rookley and fields adjacent to Borthwood Copse.

Katie hopes Appley Beach could be another place they go to free-fly in the future.

Watch a video of Saffy at [iwradio.co.uk](http://iwradio.co.uk).



*“I only wanted a bird if I was able to free fly it because I don’t agree with keeping these big birds in cages with no enrichment”*



## News from Ryde North

by Cllr Karen Lucioni

Aspire continues to offer help, with medication deliveries, calling to chat and the food project remains extremely important to many.

I have been volunteering and delivering to those in need. I’m involved with a food project in Oakvale to make sure those who need support and able to access a food project at this end of our town, can. Please let me know if you’d like to know where this is.

I would like to assure you if you need to talk with me, I am always available, not being able to offer a surgery now, it is especially important that I am easily contactable, you can WhatsApp, text, phone, email or contact me on social media. I can offer a Zoom meeting if you would like to have a face-to-face chat. Whatever if good for you is fine by me.

I do get asked about my opinion about the vaccine. I have been lucky enough to have had one through the NHS programme because I work in social care. I had no side effects and still observe social distancing, covering my face and making sure I am socially distanced. Having or not having the jab is a personal choice and a decision for those offered it.

I personally did not have to think twice, and I can only tell you my own experience of it. I believe in choice however please do your own research before making up your mind. I care for all of you regardless of what side of the argument you are on, and just want health and happiness for everyone.

I have also volunteered at Westridge alongside Aspire volunteers to meet and greet people on their way to have their vaccine and wanted to say thank you for everyone who continues to give time to this project. I have received so many wonderful comments from those visiting and has put any people at ease. Well done everyone!

Fly tipping continues to be high on my agenda, along with those allowing to let their dogs foul on our streets. Owners have been fined recently and this will not be forgotten on my watch, as residents are really fed up with the total lack of respect and consideration. If you see fly tipping or dog fouling report it to [info@islandroads.com](mailto:info@islandroads.com) for them to raise a job to remove it.

☎ 07506 930109

✉ [karen.iow@icloud.com](mailto:karen.iow@icloud.com)



## News from Lake South

by Cllr Paul Brading

I hope residents are keeping well. By following Government guidance, I hope life can return to normal as soon as safe to do so. The incredible mass rollout of the vaccinations is a huge step forward.

**Update on land behind Premier Inn/ KFC**

Sadly, the owner has failed to comply with enforcement actions. The land levels remain completely different than before the illegal works happened, and none of the buried materials have been removed. As an Authority our position remains robustly unchanged and enforcement actions will move to the next level speedily if non-compliance continues.

**Illegal motorcycle use of land behind Premier Inn**

Since Christmas, motorbikes have been churning up this land and causing noise disturbance. Police were called and did catch them, but there have been a few more sporadic instances. The police will continue to visit routinely, but please contact me if you see this happening.

**Planning applications**

There are two outstanding applications in the Ward. A 2nd application for a bungalow beside the Premier Inn footpath, previously refused, and the second for eight houses along Whitecross Lane. Both applications are a little contentious. I will await the decisions, before deciding if I need to take any action.

**Beach safety plan**

The new Beach Safety Policy is now agreed. This covers such things as beach and slipways cleaning and making

our beaches safe. I have continually pushed hard for the reinstatement of marker buoys in the Bay, to help protect swimmers from motorised crafts like jet skis. The first part of this policy will see marker buoys in the Bay from the 1st May which is great news.

**Footbridge works**

At the time of writing, the works on the two footbridges at Skew Bridge and Alresford Road are well underway and will ensure they are at the safety standards required. Both bridges are well overdue these repairs and on track to be completed on time, and well before the new trains start running.

**Green Lane bend with Cemetery Road**

I have had meetings with residents and Island Roads about this dangerous bend where excessive speeding has caused several near misses to pedestrians and hit one property twice. I have now managed to get signs warning of a sharp bend installed. This will go some way to helping in the short term.

**Copse Mead**

I have been speaking with residents about Copse Mead, which has recently been handed back to the Local Authority by the trust. This lovely area needs to be maintained, and possibly made more use of. I am ascertaining what the plans are for this area and will keep everyone updated.

☎ 07719174690

✉ [paul.brading@iow.gov.uk](mailto:paul.brading@iow.gov.uk)



# Ryde Town Council

Town Hall Chambers, 10 Lind Street, Ryde, PO33 2NQ Tel: 01983 811105  
 Email: [clerk@rydetowncouncil.gov.uk](mailto:clerk@rydetowncouncil.gov.uk) [www.rydetowncouncil.gov.uk](http://www.rydetowncouncil.gov.uk)



Micheal Lilley with John Ackroyd

## Mayor of Ryde, Cllr Michael Lilley

My heart goes out to those who have lost love ones or experienced Covid directly, we need to celebrate the lives lost or scarred by delivering hope. John Ackroyd is a Ryde resident who has sadly died (not of Covid) recently, John himself is a message of hope. John was the designer behind the world's first commercial electric car, the Enfield, a range of hovercraft, Thrust (the world record breaking fastest car), and Richard Branson's record-breaking balloons. John was inspirational, innovative and creative, which are all skills we need to celebrate and grow while our communities come out of Covid.

We as a Town Council have to offer our community a message of hope at this critical time and be focused on the road to recovery post Covid. Many in the community have been vaccinated and many more will be over the coming weeks. Our mission and vision since March 2020 is to support our residents through this terrible time and have a Town Council building the foundations of a launch pad to rebuild our healthy, beautiful place that inclusivity improves and pro-vides hope for the future and future generations.

We go forward together.

Ryde Town Council throughout the last 12 months has not only supported the most vulnerable in the community during Covid, but it has also been proactive and achieved some great outcomes.

These include:

- We have secured funding to establish the Ryde Kickstart programme that will create in excess of 30 job placements for young people in the town
- Established the Ryde Historic Action Zone with over £1M invested in the High Street
- Purchased St.Thomas's Church to enable our award winning youth service to expand
- Purchased Vectis Hall to be brought back into community use
- Secured over £100K extra funding for these buildings

We are also developing a plan to buy and bring back into community use Ryde Theatre.

All these projects will create jobs, improve our tourism offer and create hope in a post-Covid world.

In September 2021, Ryde celebrates the 90th year since the 1931 Schneider Trophy Sea-plane race where Ryde was the start and finish line. The British Supermarine sea-plane won in record time and this plane was basis for the Spitfire and the rest is history.

## Walks for Ryde residents

Spring is nearly upon us and the weather is becoming brighter. Here in Ryde we are lucky to have several areas of meadow and woodland at our disposal. Gift to Nature manage and maintain three sites in and around Ryde — Pig Leg Lane, Binstead Wood and Haylands Wood — creating community space of unspoilt nature.

We understand it is a very anxious time and being able to collect our thoughts and breath in the fresh air really helps, so why not take a walk, and check out one of these beautiful sites?

**For more information and directions visit [www.gifftonature.org.uk](http://www.gifftonature.org.uk)**

Please remember;

- When outside it is essential to keep a 2 metre distance from anyone you do not live with.
- Remember you should minimise how long you spend outside, but you can leave your home to exercise. This should be limited to one a day.
- You should not travel outside your local area.
- You must not leave your home if you are self-isolating.



# Grant Funding

The Town Council is delighted to support the following organisations through its grant funding process:

**£1,500** has been awarded to Ryde Methodist Church towards the cost of replacement windows at the rear of the hall which is often used for events and meetings by local community groups

**£1,000** for Project Opera

**£2,300** for the provision of two responder kits to the IW Ambulance Service Volunteer Community First Responders for use in and around the Ryde area

**£3,000** to the Bus & Coach Museum towards substantial maintenance works over the 2020/21 winter

**£800** to Ryde Rowing Club for their annual Regatta, which will hopefully be able to go ahead this year  
The Town Council has also awarded a grant for **£200** to Victim Support for the purchase of security items.

£1,500



£3,000

£1,000



### Upcoming Council Meetings

Date	Meeting	Time	Venue
2/3/2021	Planning Committee	4pm	Youtube link on RTC website under - Minutes and Agendas
9/3/2021	Finance Committee	4pm	Youtube link on RTC website under - Minutes and Agendas
23/3/2021	Planning Committee	4pm	Youtube link on RTC website under - Minutes and Agendas
12/4/2021	Full Council	7pm	Youtube link on RTC website under - Minutes and Agendas



UPVC



Windows



Doors



Conservatories

## Double glazing specialists now offer finance



Trinity Windows IOW



For more information, call Gary and the team at Trinity Windows IOW without delay, on **07912 934 679**. [www.trinitywindowsiow.co.uk](http://www.trinitywindowsiow.co.uk)

We accept card payments





# Shanklin Town Council

Town Clerk RFO: Ms S. Janeway LL.B (Hons) CiLCA MSLCC, 65 Landguard Road Shanklin Isle of Wight PO37 7JX

☎ 01983 865101 ✉ shanklintowncouncil@hotmail.com 🌐 www.shanklintowncouncil.co.uk



## Town Mayor's Address

*Councillor Steve Knight  
Shanklin Town Mayor (2018-2021)*

Dear residents and town councillors of Shanklin,

We hope this report finds you fit and well. It is very sad to see us in another lockdown! After we thought things were looking up.

On a more positive note we now have the vaccine being distributed to the most vulnerable and NHS staff — hopefully the light at the end of the tunnel.

In early December we had the honour and pleasure of presenting a certificate of congratulations to Keith Meadows who is an insurance specialist. He set up his business in Palmerston Road thirty years ago. He has supplied a first class service and has been an employer in the town — quite an achievement.

Shanklin Town Council became involved

in 'End Polio' through Shanklin Rotary Club. The aim is to plant as many purple Crocus bulbs as possible. One of the areas is the Shanklin War Memorial. Thanks to Terry Carpenter and Shanklin Green Towns, we will have a really good display in spring time.

STC have discussed the possibility of erecting an information display noticeboard at the War Memorial site in the Old Village. It is hoped that it will include a link to an app to show some of the history of Shanklin.

The works have now continued on Hope



Hill to correct the broken sewer. Southern Water engineers are in attendance. You may recall the disruption caused by traffic lights in the busy season. We hope completion will be before summer time.

Shanklin Railway Station and link to Ryde has now closed for three months to make changes so the new train will be able to continue as the oldest transport link to Ryde and the ferries. Over 150 years — congratulations to railway staff for keeping them running.

For 2021, STC will be having virtual council meetings to keep everyone safe from the pandemic.

Shanklin Library will remain closed for the initial lockdown but discussions are underway to try to offer a click and delivery service in Shanklin. Thanks to Maria and all the volunteers for all their hard work.

That ends my report for now. Hopefully good news is on the way.

## Funeral Plans from William Hall Independent Funeral Directors

### Planning ahead for peace of mind

**A funeral plan provides peace of mind for you and those you care about. You make the arrangements in advance, specify your wishes and take care of the costs.**

**We recommend funeral plans from Golden Charter, the UK's largest independent plan provider. With a Golden Charter plan you'll benefit from:**

- Paying at today's prices for a service you may not require for many years
- A guarantee of nothing more to pay for our services
- A choice of a range of plans – with the option to personalise your own
- The reassurance that your wishes will be carried out, sparing your loved ones uncertainty and distress

**Taking out a funeral plan is one of the most thoughtful decisions you could make.**

To find out more about Golden Charter funeral plans from William Hall, please return the coupon below, phone us, or call in. REF: B 49

Mr/Mrs/Ms: \_\_\_\_\_ Initial: \_\_\_\_\_ Surname: \_\_\_\_\_ ✂

Address: \_\_\_\_\_

Tel no: \_\_\_\_\_

Send to: William Hall Independent Funeral Directors, Sunnybrow Winford Road, Newchurch, Isle of Wight PO36 0JX **Tel. 01983 868688**



### £150 of M&S Vouchers

Awarded to every new Golden Charter Funeral Plan taken out between 23rd February to the 31st March 2021 with William Hall Independent Funeral Directors, Sunnybrow, Winford Road, Newchurch PO36 0JX. [www.williamhallfuneraldirectors.com](http://www.williamhallfuneraldirectors.com)

## Island MEMORIALS

Bespoke, Traditional and Contemporary Memorials  
Crafted in Natural Stone, Granite & Marble.  
Additional Inscriptions & Renovations.

Contact: Jason French

**Tel: 01983 866495**

[www.islandmemorials.co.uk](http://www.islandmemorials.co.uk) [islandmemorials@gmail.com](mailto:islandmemorials@gmail.com)

Providing A Complete Monumental Masonry Service to the Island Community

## Beacon MAGAZINE

The latest news, celebrity interviews, recipes, homes & gardens, competitions and so much more!



## Sign up to the Beacon newsletter



Receive bonus content direct to your inbox every week

[www.iwbeacon.com](http://www.iwbeacon.com)



| LEGAL & FINANCIAL |

# *Planning for the Future After Coronavirus*

2021 began in much the same way that 2020 ended; national lockdowns and advice to stay at home and keep safe. With the roll out of vaccinations across the country, it has been said that there is a light at the end of the tunnel and that normal life may resume later on in the year.

**D**espite this glimmer of hope, it is important to continue to consider what is important to us and to continue to consider worst-case scenarios so that we can make plans in case something were to happen to us, or our loved ones.

As solicitors, we often talk about making Wills and Lasting Powers of Attorney as this is the legal backup should your loved ones end up in situation where they cannot manage their affairs or if they pass away unexpectedly.

Lasting Powers of Attorney (LPAs) are documents whereby you appoint an attorney (or attorneys) to manage your affairs and make decisions on your behalf if you are not able. There are two types; one covers property and financial affairs such

as managing bank accounts, your property pensions etc and the other covers health and welfare decisions such as whether you can have hospital treatment or the arrangement of care at home or in a care home.

We have seen the importance of these documents during the pandemic with people being able to access their loved ones accounts whilst they have been unwell in hospital or at home. Without these documents, loved ones have been left in limbo because they cannot manage their loved ones' affairs.

Your Will determines what will happen to your assets after your death. Without a Will your family are left to follow the rules of Intestacy which may not be what would want to happen to your assets —

particularly if you have complex family arrangements. Furthermore, there are opportunities to consider tax planning and protective measures in your Will which are lost if your estate follows the Intestacy rules.

Even if you already have a Will in place, if you have not reviewed this for some time, it may be out of date and fail to reflect your current wishes and circumstances.

Even if your personal circumstances have not changed, the law changes constantly and so a Will prepared some years back may need to be revised. Tax planning Wills may no longer be suitable and it can cost several thousands of pounds to overcome this if you die without updating your Wills. A new Will or a Will update is much cheaper!





Advertise with us  
from as little as  
£38 per month.  
Call 01983 433112



**JOSH KERLEY**  
TREE SERVICES

- ✓ All aspects of tree work undertaken
- ✓ NPTC Qualified and fully insured

**FREE NO OBLIGATION QUOTES**  
**TEL: 07875021682**

**YOUNG**  
**PLUMBING**

PLUMBING & HEATING SERVICES

Tel: 01983 339671  
Mb: 07967 225030

[www.YoungPlumbing.co.uk](http://www.YoungPlumbing.co.uk)

**D Honey**  
**Decorators**

Established in 1972

All aspects of home decor covered, specialist in wall paper hanging and tiling.

Call 07878 661761

Find us on **facebook.**  
Dhoneydecorators

**Specialising in Patios, Driveways, Deckings, Fencing, Garden Walls and Stonework**

**Call: 07929 750 924**

**JM Harris**  
Landscaping  
[jmharrislandscaping.co.uk](http://jmharrislandscaping.co.uk)

**A&E BUILDERS**  
**BUILDING & CONSTRUCTION SERVICES**

*No job too big or small!*  
EMAIL: [aebuilders71@gmail.com](mailto:aebuilders71@gmail.com)

- DRIVEWAYS • PATIOS • SPECIALIST BRICKWORK
- EXTENSIONS • ORANGERIES • PORCHES
- DRAINAGE & HOUSEHOLD MAINTENANCE

Call for a no obligation free quote from a builder with over 30 years experience. Public liability insured.

**TEL. 07525 700980 or 01983 883787**



**Cherry Tree**  
shutters  
Changing your view



**20% OFF with this voucher**

**01983 640174**

[www.cherrytreesutters.co.uk](http://www.cherrytreesutters.co.uk)

**0% FINANCE AVAILABLE**



\*Terms & Conditions Apply

[Checkatrade.com](http://Checkatrade.com)

**W**hen compared to the parks and gardens of stately homes, it's understandable if we regard our own gardens as insignificantly small, but we should take a collective step back and consider the bigger picture. When added together, 'ordinary' householders are, in fact, the greatest landowners in the UK. Our domestic gardens account for an area equivalent to Exmoor, Dartmoor, the Norfolk Broads and the Lake District National Park combined. Taking this view, it's easy to see how even the smallest plot can play a part in helping garden birds to thrive.

Late winter through to early spring is the time when nature's store cupboard is almost bare. Autumn's harvest of fruits, berries and rosehips have long been consumed. Seed heads, bleached by frost and wind, stand empty. Flying insects are scarce and worms semi-hibernate; burrowing deeper into the soil to escape winter's chill, making them out of reach for most birds.

Early-flowering shrubs can help fill the hungry gap. Witch hazel, daphne, viburnum and mahonia are real stalwarts of spring; providing nectar-rich flowers for birds and early-venturing insects. Neat-freak gardeners aren't generally fans of honeysuckle as its natural growth habit is to make a multi-stemmed tangled 'mess', but it's a plant that is invaluable to wildlife. Not only does it produce flowers and berries, its interweaving stems also offers great shelter and nestbuilding



Honeysuckle



Viburnum

# Feed the BIRDS!

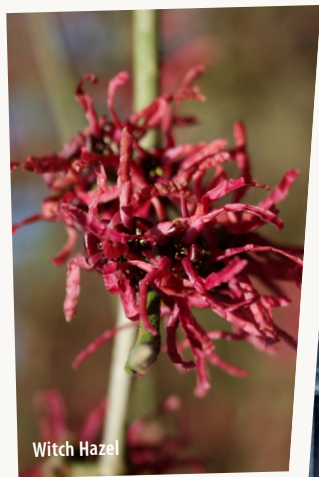


Gardening to help sustain our garden birds isn't just a philanthropic gesture. It's immensely beneficial to the health and biodiversity of your garden – and also to the wider environment, writes Flo Whitaker.

opportunities – birds will strip off honeysuckle's papery bark for use as nesting material. Best of all is humble ivy. Like honeysuckle, its tangled growth makes a perfect habitat for all manner of wildlife and its fatty, high energy berries are carried throughout winter; blackbirds and thrushes seem to particularly enjoy them. Flower pollen from early bulbs will also provide a nutritious snack for wildlife, but be prepared for pesky pigeons to rip crocus blooms to shreds – bah!

Birds need a dependable source of ice-free water; not just to drink, but also for bathing to keep their feathers in tip top condition – a cold plunge on a frosty day holds no fear for them. Fancy bird baths are all very well, but a cheap plastic plant saucer is just the thing in winter; being frost-resistant it will flex and bend, allowing ice to be easily knocked out. Don't forget to give bird baths, bird tables and feeders a weekly scrub with hot soapy water to remove any harmful bacteria.

If you give the birds a helping hand at the leanest time of the year, they will repay your efforts many times over. One blue tit chick will eat approximately 100 caterpillars and insects per day - that's 100 less beasts to munch away at your summer cabbages and roses. Now, there's a thought... ☺



Witch Hazel



Climbing Ivy

*“One blue tit chick will eat approximately 100 caterpillars and insects per day”*



Great Tit and Robin



# GRASS CUTTING

OFFERING A GRASS CUTTING AND STRIMMING SERVICE  
ALL SIZE LAWNS - RIDE ON MACHINES FOR LARGER AREAS  
ONE OFF OR RETURN CUSTOMERS WELCOME

TRIM & STRIM 07593 501 975



## First Choice Stairlifts

Island Based  
Local Authority Approved  
Straight Lifts  
Curved Lifts  
And Outdoor

FREE Islandwide  
No Obligation  
Surveys

Take Back Control  
of your home with a Stairlift call us today

863404



NEW SHOWROOM OPENING SOON BY APPOINTMENT - 2 HIGH STREET NEWPORT



## The Island's Premier Double Glazing Company

Windows, doors,  
conservatories, porches,  
guardian roofs and much more

10 year insurance  
backed guarantees

Extensive range of  
colours and styles

[whitewindows.co.uk](http://whitewindows.co.uk)



## The Small Job Plumber

City &  
Guilds

Lady  
plumber  
available  
on request

For all of your small (and not so small) plumbing needs  
All types of plumbing work undertaken  
Islandwide coverage with 15 Years Experience  
Fully insured for domestic and commercial work  
We offer a friendly, reliable service from a local family run business



Call Mark and Courtney on 759035 or 07984651393

LEMLEC LTD



We are more than electricians



Boiler broken or in  
need of a service?  
Call us today for  
a free quote

01983 294 557  
[lemlecelectrical.co.uk](http://lemlecelectrical.co.uk)



FENSA  
Registered Company

TRUST  
MARK  
Government Endorsed Standards  
[www.trustmark.org.uk](http://www.trustmark.org.uk)

**WHITE  
WINDOWS** Ltd.

Call TODAY for your free estimate

01983 523552

The Island's  
**CARPET & FLOORING  
SUPERSTORE**

12 Hurstake, Riverway Industrial Estate,  
Newport, Isle of Wight, PO30 5UU



**OPEN 7 DAYS A WEEK**

MON - FRI 9AM - 6PM

SAT 9AM - 5PM

SUN 10AM - 4PM

**01983 533150**

# NO DEPOSIT

# INTEREST FREE CREDIT

**Subject to status on orders  
over £495**

Excludes fitting charges

D&S Carpets are authorised and regulated by the Financial Conduct Authority. We are a credit broker not a lender - credit is subject to status and affordability, and is provided by Hitachi Capital (UK) PLC. Terms & Conditions Apply.

Rugs

Luxury  
Vinyl Tiles

Wood & Natural  
Flooring

Vinyls

Carpets



[www.dscarpets.co.uk](http://www.dscarpets.co.uk)

STAY SAFE.  
WE'LL DELIVER.



WILTSHIRE

EST. FARM 1991

FOODS

When it's cold and grey outside, let us bring sunshine to your door! No more supermarket queues, just stay safe at home and enjoy effortless, delicious meals, delivered with a smile.

Times may be challenging right now, but we're delivering our easy-cook meals as usual. Our brochure is bursting with brilliantly easy meals to brighten your day - prepared by our expert chefs using quality ingredients, just minutes in the microwave or oven and you can sit down to a delicious dinner.



**FREE\*** no contact delivery at your doorstep



Easy to order by phone or online. Pay by card when ordering. **No contract. No commitment.**



**350 delicious dishes** including mini, hearty and options for special diets

\*Minimum orders required in some areas

★★★★★ Trustpilot 4.7 out of 5



**NO CONTACT DELIVERY**

For your **FREE** brochure call

**02380 622150**

or visit [www.wiltshirefarmfoods.com](http://www.wiltshirefarmfoods.com)

Here's a good plan  
£100 towards your  
family's peace  
of mind



[funeralcare.co.uk](http://funeralcare.co.uk)

LOCAL BRANCHES AT: East Cowes • Freshwater • Lake • Newport • Ryde • Shanklin • 0800 243 380

**£100 OFF** our Pre-paid Funeral Plan

**Terms & Conditions:** 1. This discount is solely redeemable by the presenter of the voucher, who may use it against the purchase of a Southern Co-op funeral plan for themselves or an immediate family member, but must be the person paying for the funeral plan. 2. The discount is only redeemable at Southern Co-op owned Funeralcare funeral homes. 3. The voucher may not be exchanged for cash. 4. The discount will be deducted from the retail price of the funeral plan purchased at time of sale. 5. Only one discount is available per funeral plan. 6. The voucher must be presented at the time of purchase. 7. This voucher has no cash value and cannot be used in conjunction with any other discount, voucher, offer or promotion. 8. The decision of Southern Co-operative Funerals Limited in relation to each discount is final and binding. 9. Voucher will be void if reproduced or photocopied. 10. Southern Co-operative Funerals Limited reserves the right to withdraw this promotion at any time. 11. This voucher is valid until **31.07.2021 BEA10W02/21**

southern coop

The **co-operative** funeralcare

# WIN! Can you spot the differences?



## £25 Wight Gift Card



Win a £25 Wight Gift Card, which can be spent with one of a huge selection of Isle of Wight retailers, meaning you can enjoy a treat and support local businesses at the same time. Visit [townandcitygiftcards.com/product/wight-gift-card](http://townandcitygiftcards.com/product/wight-gift-card) to find out where you can spend it.



NAME: ..... TEL: .....

ADDRESS: .....

POSTCODE: ..... E-MAIL: .....

I am happy to be contacted by the sponsors for marketing purposes  I would like to receive Beacon Magazine's weekly email newsletter with more competitions

### Closing date - 31ST MARCH 2021

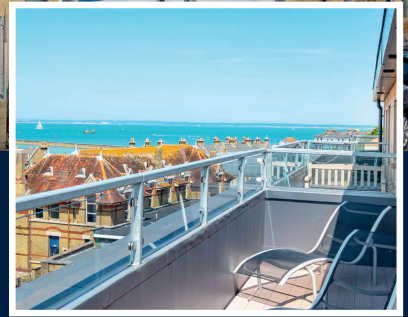
Send your entries to: **IW Beacon Competition, 8-10 Dodnor Park, Newport, Isle of Wight, PO30 5XE**  
When sending your entry to us you **MUST** ensure that you use the correct postage. Terms and conditions available on request.  
Prizes must be claimed within 30 days of the draw date. Previous winners can be found on our Facebook and Twitter pages.  
Winners will be contacted by phone.

### Did you know...

You can take a photo on your phone and email your entry to [win@iwbeacon.com](mailto:win@iwbeacon.com).



JUST  
**25%**  
REMAINING



## WORRY FREE LIVING WITH A HOME AT PRINCESS COURT

**Whether you are approaching retirement or already retired, you deserve to enjoy a fulfilling, worry-free life ahead. Princess Court offers a choice of Luxury one and two bedroom apartments with a variety of aspects.**

In each apartment you will find generous accommodation with fitted kitchens and features such as private balconies, built in wardrobes, spacious hallways, generous storage, stylish bathrooms and large windows that let in an abundance of natural light.

Adjacent to Waitrose and just minutes from the Esplanade these age exclusive homes couldn't be set in a more desirable area. Every home is served by a lift and each benefit from its own private balcony.

The Britannia lounge has its own south facing terrace to enjoy with your neighbours, friends, and family and our beautiful guest suite can accommodate them for a longer visit if you wish.

  
**PRINCESS COURT**  
★ ★ ★ ★ ★

**Call our sales team on 01983 215005 to request a tour and see what a worry-free life at Princess Court has to offer**

Find out more by visiting our website  
[WWW.PRINCESSCOURT.CO.UK](http://WWW.PRINCESSCOURT.CO.UK)

  
**CAPTIVA**  
HOMES

**Hose  
Rhodes  
Dickson**