

The background of the slide is a photograph of a train, likely a DART train, on a track. The image is overlaid with a semi-transparent green filter. The train is moving from left to right, and the tracks and overhead power lines are visible. The text is overlaid on the lower half of the image.

Transportation, Infrastructure Delivery & Emergency Services Strategic Policy Committee meeting 25th February 2025

Presentation Overview



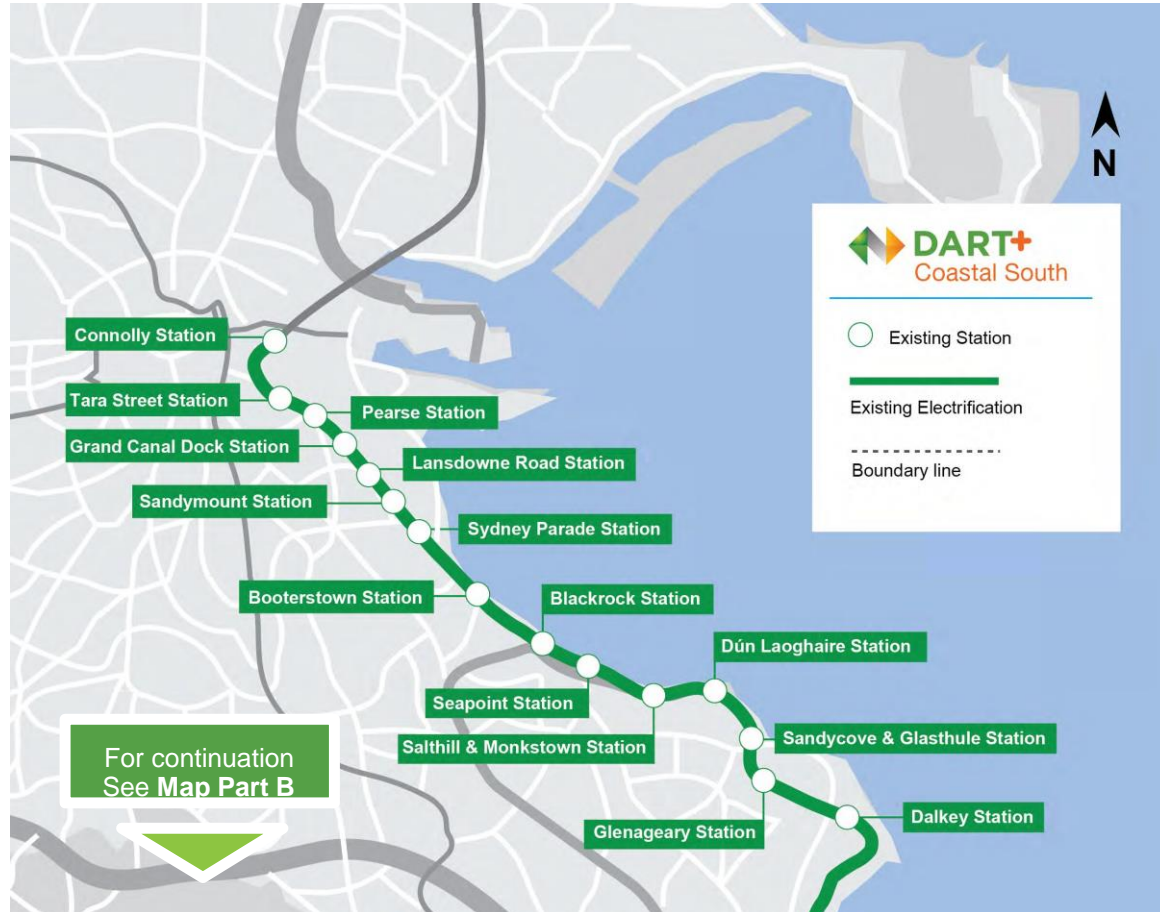
BEMU Trainset 1 in Inchicore Works

- Presentation of DART+ Coastal South:
 - Stage 1 – Bray to Greystones
 - Stage 2 – City Centre to Bray
- Wicklow Capacity Enhancement Project

DART+ Coastal South Scope

DART+ Coastal South Overview

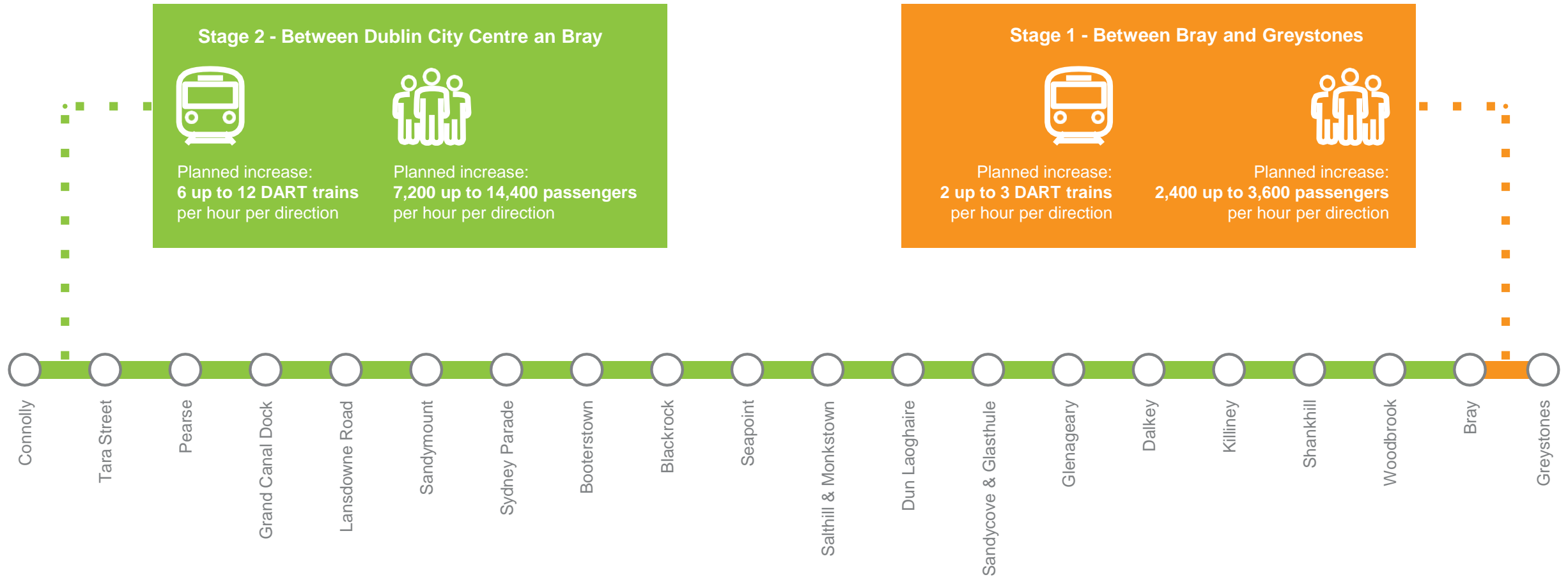
Map Part A



Map Part B



DART+ Coastal South – Stage Frequency Increases



DART+ Coastal South – Stage 1

Stage 1 : Bray to Greystones Capacity Enhancement

- ❖ Capacity improvements through upgrades to existing infrastructure to eliminate speed restrictions and enable the passing of trains.
- ❖ Modifications to the track and platform 1 at Bray Yard to enable parallel running.
- ❖ Electrification and signaling enhancements between Bray and Greystones.
- ❖ Upgrade of ‘Ennis Lane’ Level crossing on Rathdown Road to a CCTV-monitored level crossing is being considered to improve safety and reduce train journey time.
- ❖ Stage 1 completion is scheduled for the end of 2028 subject to funding availability.



Ennis Lane Level Crossing



DART+ Coastal South – Stage 2



Stage 2 – City Centre to Bray

- ❖ Stage 2 is the delivery of the infrastructure required to enable an increase in frequency from 6 tphpd to 12 tphpd between the City Centre and Bray.
- ❖ Infrastructure works to be determined.
- ❖ Coastal South Stage 2 to follow completion of Stage 1.

Wicklow Capacity Enhancement

Wicklow Capacity Enhancement Project

Project Objectives

The Wicklow Capacity Enhancement scheme aims to improve rail connectivity and support sustainable travel between Dublin City Centre and Wicklow Town.

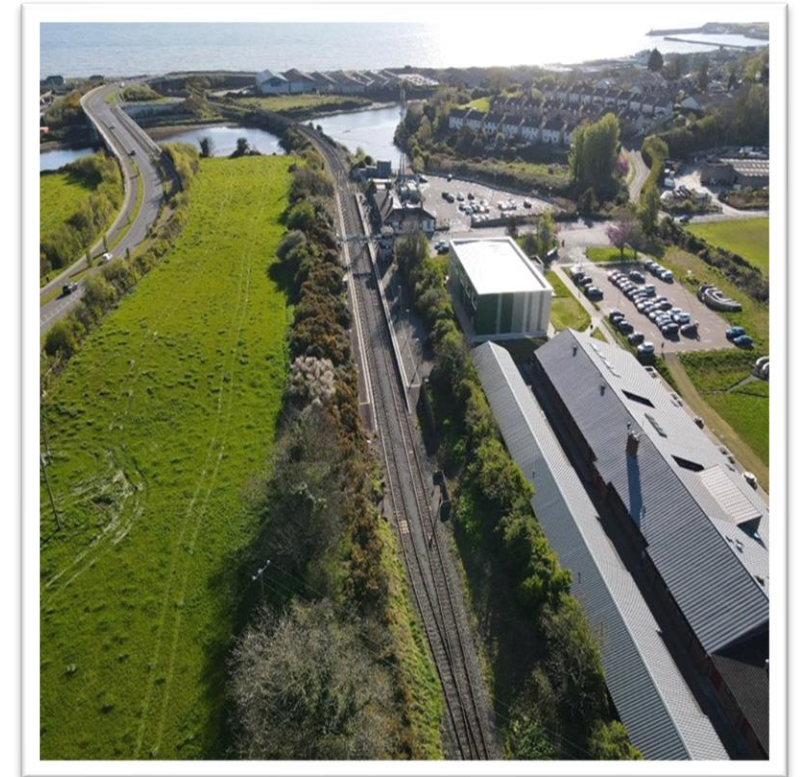
Key objectives of the scheme are to meet increased passenger demand and support decarbonisation, whilst providing value for money.

Work done to date

Systra, an engineering and transportation consultancy, we engaged in 2023 to undertake a feasibility study (Project Phase 1 & 2) to identify the preferred approach to achieving the project objectives, considering service performance, deliverability, and decarbonisation.

Output of Phase 1 & 2

1. Enhancing rail services between Wicklow and Dublin City Centre by provide 1 train per hour per direction using Battery Electric Multiple Units (BEMUs).
2. Identification of infrastructure works required.



Wicklow Capacity Enhancement Phase 2 Output – Infrastructure works



Route Works

- Installation of ETCS Level 1 Train Protection System between Greystones and Wicklow.

Wicklow Station Works

- Extension of both platforms by approx. 40m to the west to accommodate full length trains.
- Installation of Overhead Line Equipment (OHLE) on both platforms to enable charging of the Battery Electrical Multiple Units (BEMUs).
- Removal of existing station footbridge to accommodate the OHLE.
- Installation of a 38kV substation in the station maintenance yard and carpark.
- Renovation of station rooms for maintenance staff.
- Track and Signaling modifications.
- Co-ordination with the Wicklow Port Access Project.

Wicklow Capacity Enhancement Phase 2 Output – Infrastructure works



Kilcoole Station Works

- 44m platform extension to the north of the existing to accommodate full-length trains.
- Currently no track works are anticipated at Kilcoole.

Wicklow Capacity Enhancement Project Status

Current Status

- ❖ The Feasibility Study was successfully completed in November 2024.
- ❖ Finalising the procurement of a multi-disciplinary consultant.
- ❖ Next steps are to commence Preliminary Design and the preparation of Planning Permission application.
- ❖ Discussions continue with ESNB regarding the 38Kv Substation delivery.
- ❖ Target is Interim Operation in Q4 2028 subject to funding availability.

